

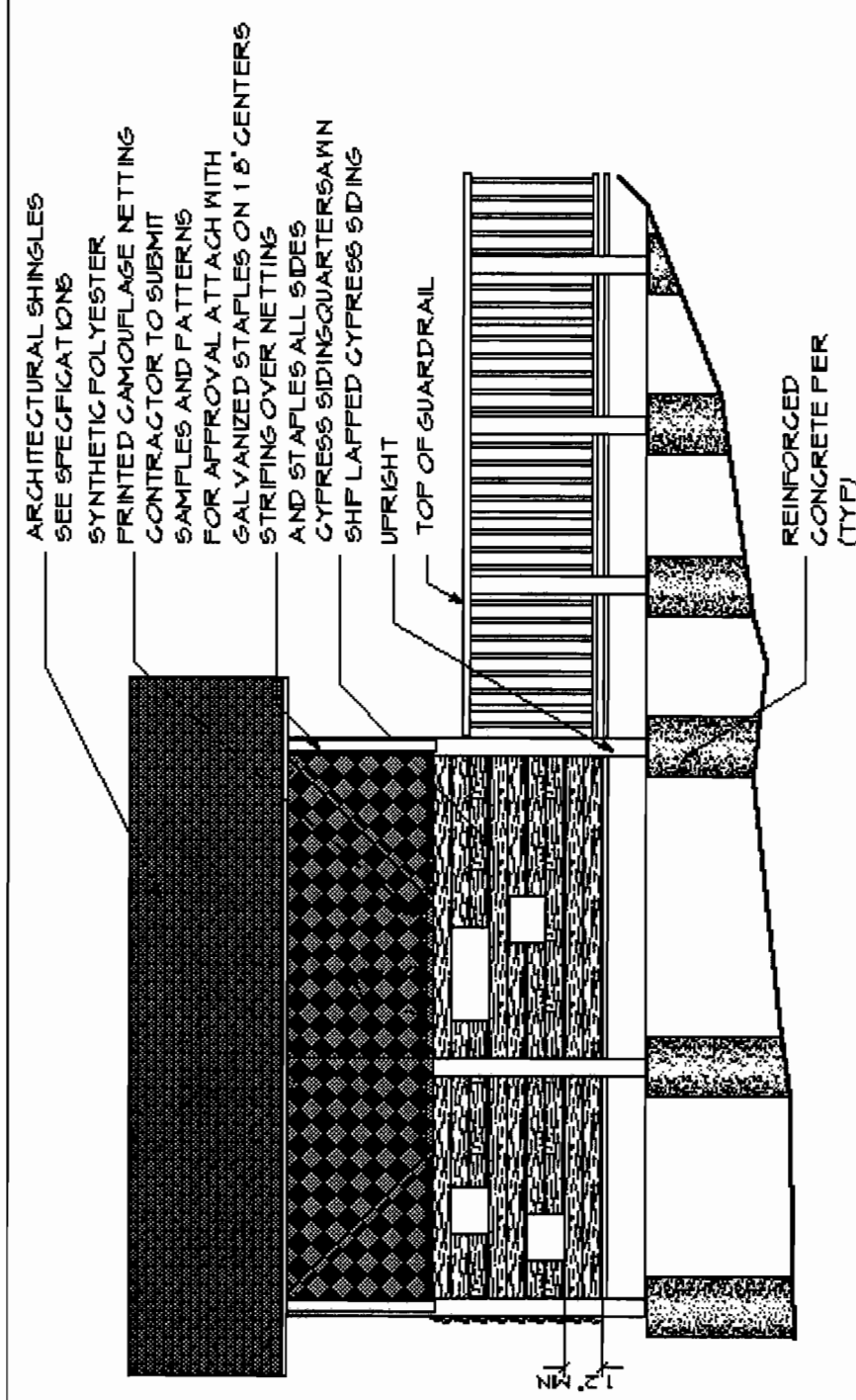
Attachment D

NATURE APPRECIATION CENTER DESIGNS

CONTENTS

Environmental Assessment Acquisition of Fourche Bottoms and Development of Nature Appreciation Facility, Pulaski County, Arkansas

Blind Elevation
Wildlife Blind Plan
Boardwalk with Concrete Piers
Board Walk Railing
Concrete Curb and Road Profile
ADA Curb Ramp
Entry Sign
Fishing Pier Elevation
Fishing Pier Plan
Fishing Pier Section
Inlet Section/Flo Gard Filter
Identification Graphic Panel
ADA Parking
Boardwalk Cross Section
Boardwalk W/O Railing with Concrete Piers
Interpretive Panel on Boardwalk
Kiosk Elevation/Kiosk Plan
Large Parking Lot and Trailhead
Interpretive Panel on Boardwalk Isometric
Restroom Back Elevation
Restroom Front Elevation
Restroom Plan
Restroom Section
Restroom Side Elevation
Small Parking Lot and Trailhead
Toilet Enclosure Arbor Plan
Toilet Enclosure Sidewalk Plan
Toilet Enclosure Side Elevation
Trail to Boardwalk Connection



BLIND ELEVATION

SCALE: 1/4" = 1'-0"

Environmental Assessment Acquisition of Fourche Bottoms
And Development of Nature Appreciation Facility

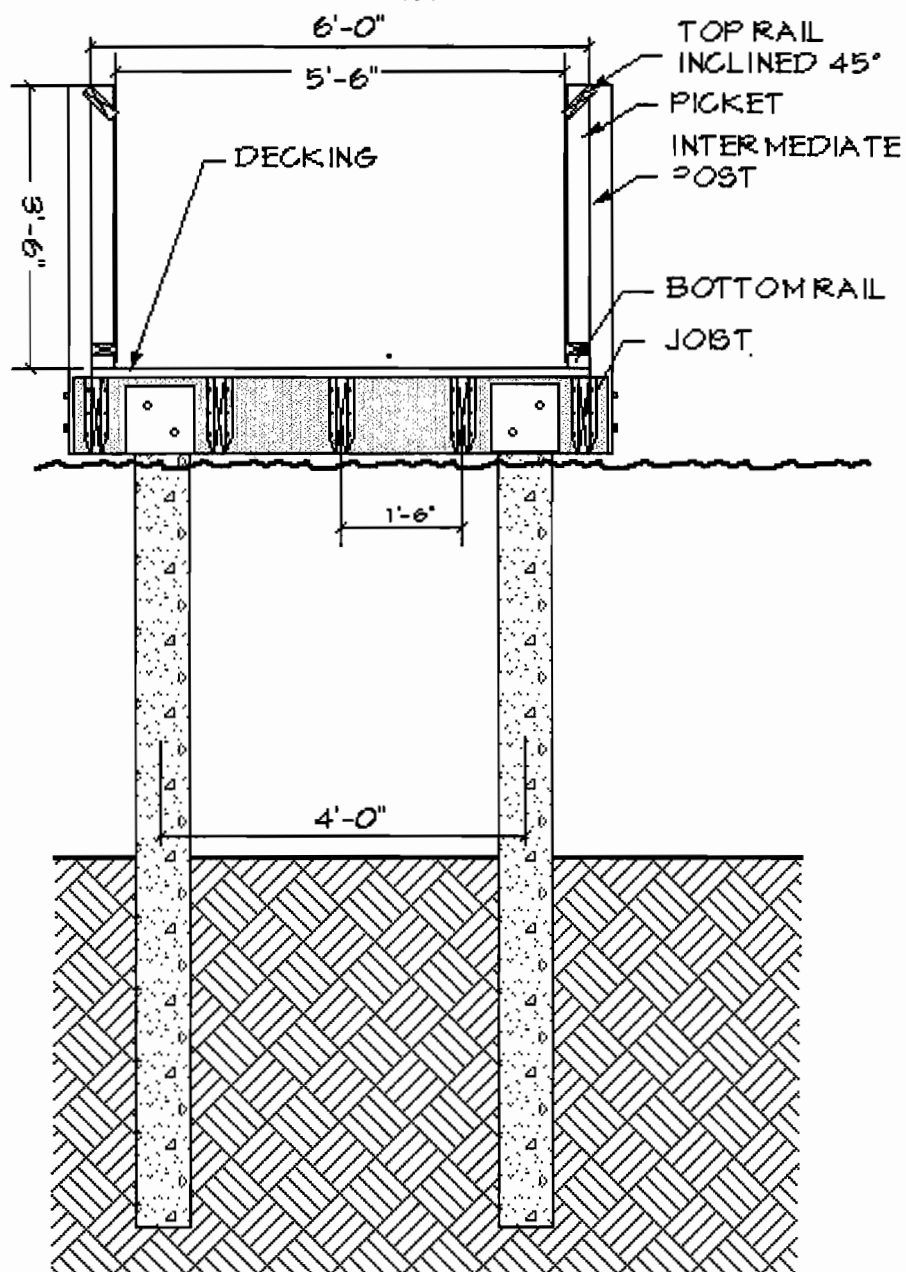
Pulaski County, Arkansas

GEC
Civil Engineers and Consultants

mesa
CONSULTANTS, ARCHITECTS, INC.

Date: January 31, 2008

PRELIMINARY DRAWINGS
NOT FOR CONSTRUCTION



BOARDWALK WITH CONCRETE PIERS

SCALE: NOT TO SCALE

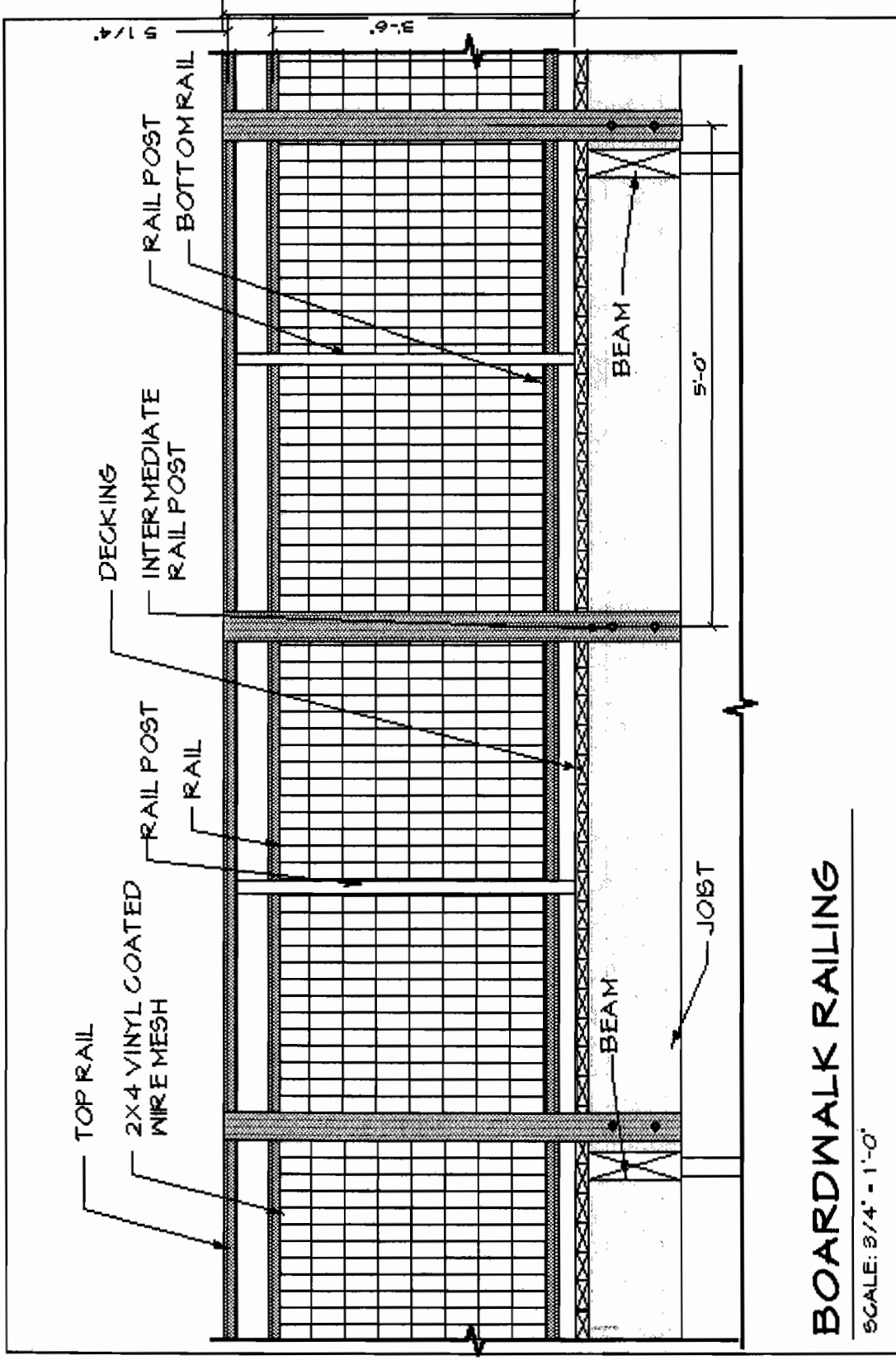
Environmental Assessment Acquisition of Fourche Bottoms
And Development of Nature Appreciation Facility

Pulaski County, Arkansas

PRELIMINARY DRAWINGS
NOT FOR CONSTRUCTION



Date: January 31, 2003



BOARDWALK RAILING

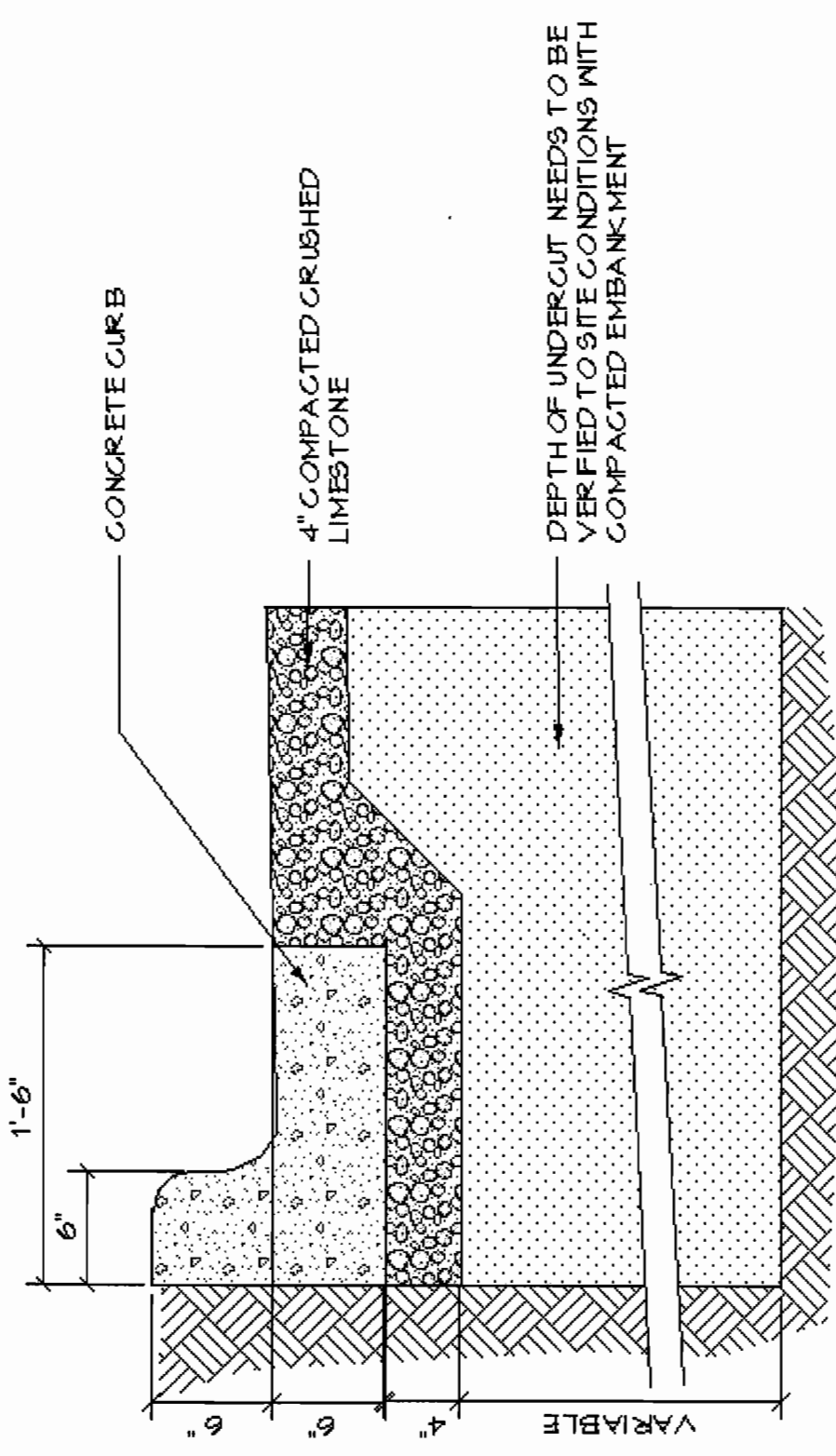
SCALE: 3/4" = 1'-0"

Environmental Assessment Acquisition of Fourche Bottoms
 And Development of Nature Appreciation Facility

Pulaski County, Arkansas

GEC
 Civil Engineers and Geologists
mesa
 ENGINEERING ARCHITECTS INC.
 Date: January 31, 2008

PRELIMINARY DRAWINGS
 NOT FOR CONSTRUCTION



CONCRETE CURB AND ROAD PROFILE

SCALE: 1 1/2" = 1'-0"

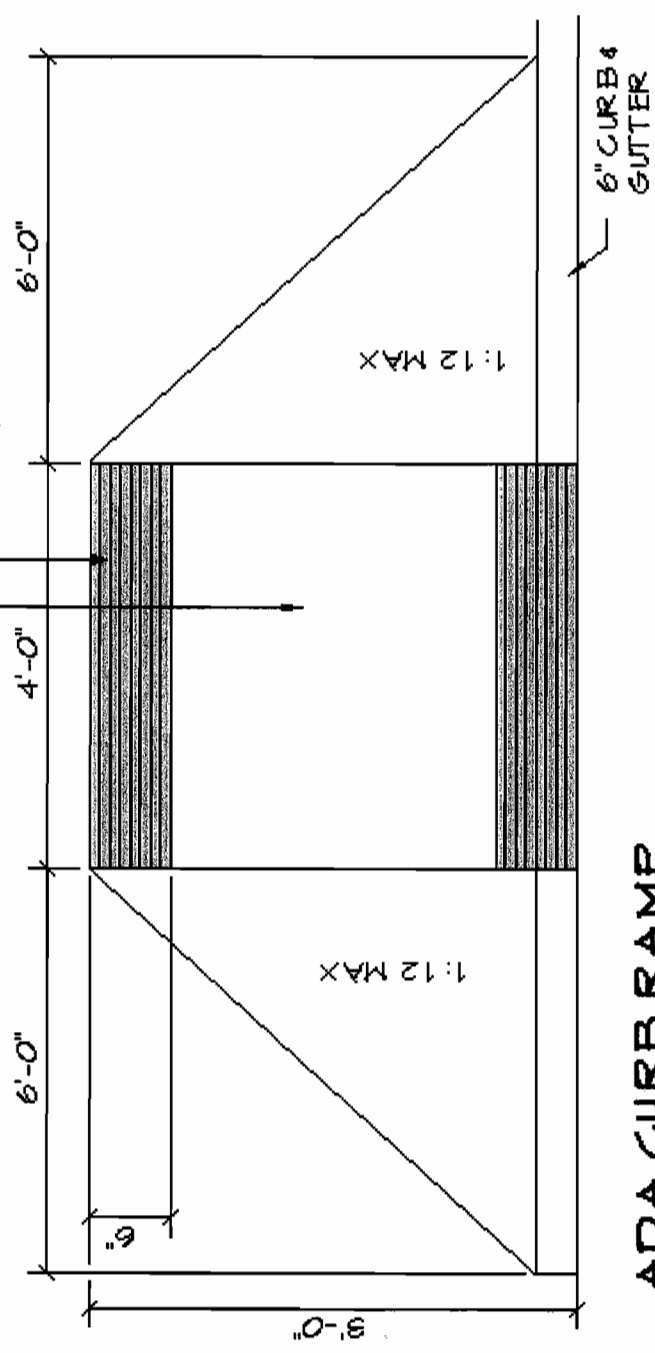
Environmental Assessment Acquisition of Fourche Bottoms
And Development of Nature Appreciation Facility

Pulaski County, Arkansas

PRELIMINARY DRAWINGS
NOT FOR CONSTRUCTION

RAMP NOT TO EXCEED 1:12

HEAVY BROOM FINISH PERP TO DIRECTION OF TRAVEL WITH INTEGRAL CONCRETE TINT AT TOP AND BOTTOM OF RAMP



ADA CURB RAMP

SCALE: NOT TO SCALE

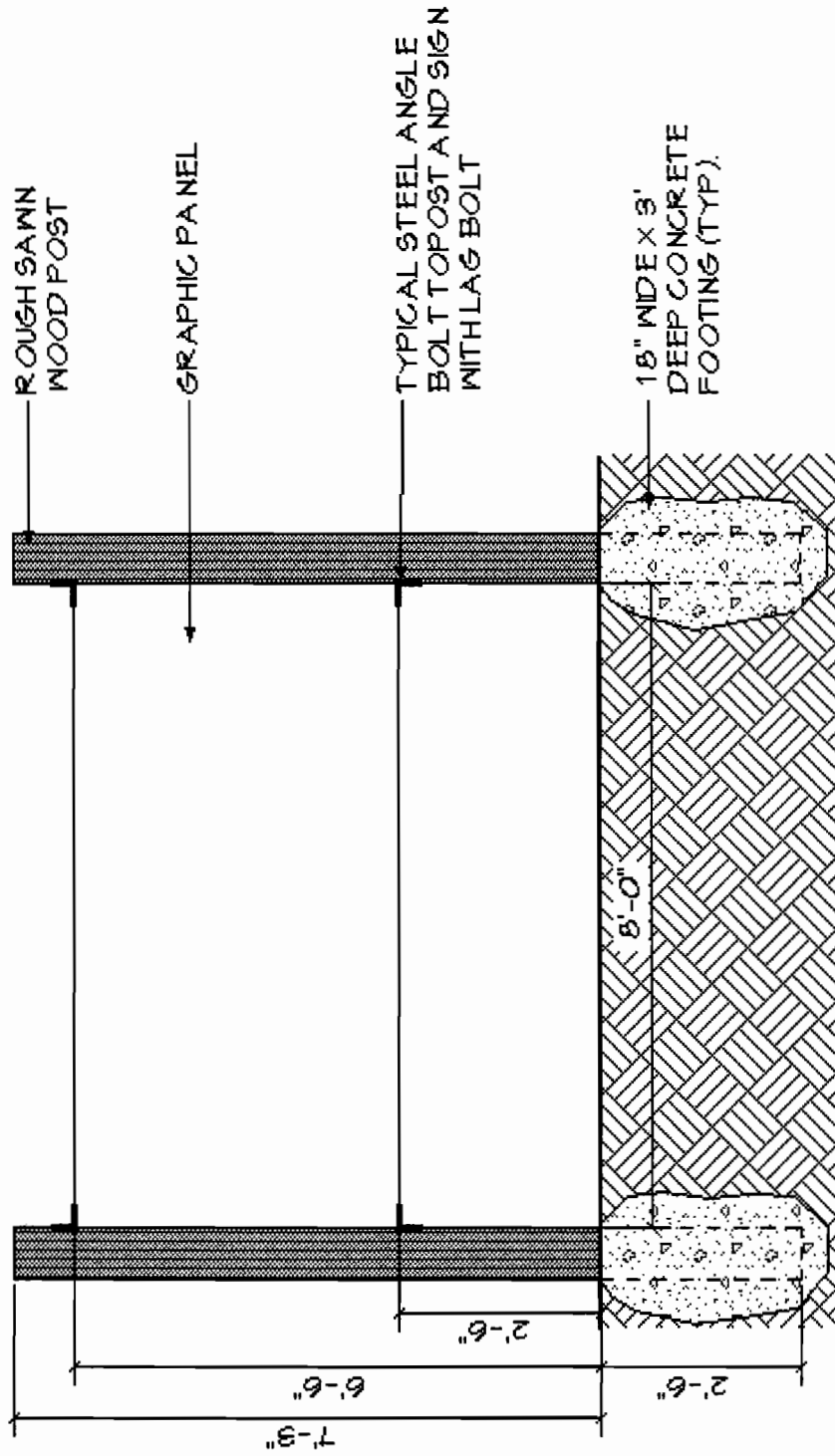
GEC
Civil Engineers and Geologists

mesa
LANDSCAPE ARCHITECTS, INC.

Date: January 31, 2008

Environmental Assessment Acquisition of Fourche Bottoms
 And Development of Nature Appreciation Facility
 Pulaski County, Arkansas

PRELIMINARY DRAWINGS
 NOT FOR CONSTRUCTION



ENTRY SIGN

SCALE: 1/2" = 1'-0"

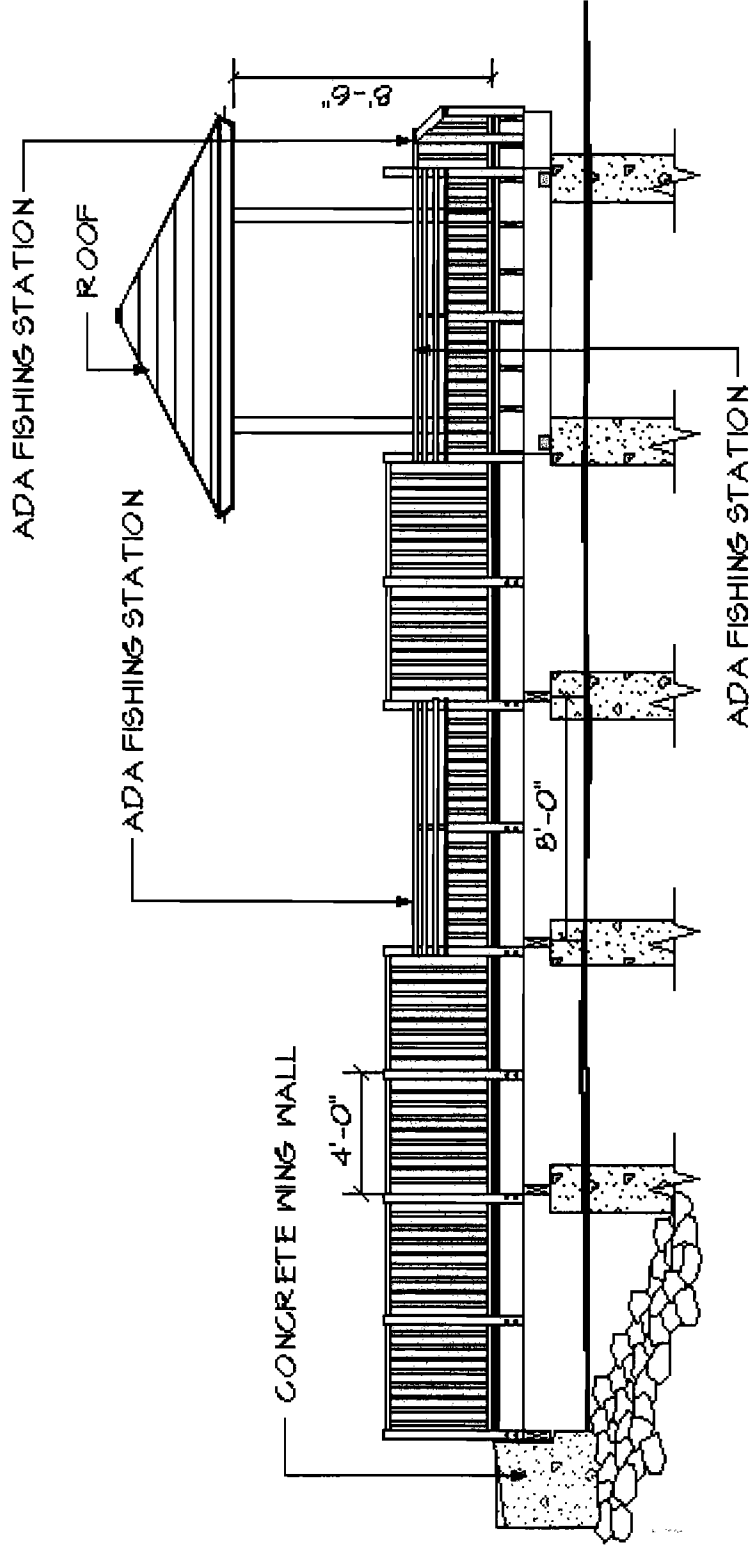
Environmental Assessment Aquisition of Fourche Bottoms
And Development of Nature Appreciation Facility

Pulaski County, Arkansas



Date: January 31, 2008

PRELIMINARY DRAWINGS
NOT FOR CONSTRUCTION



FISHING PIER ELEVATION

SCALE: 3/16" = 1'-0"

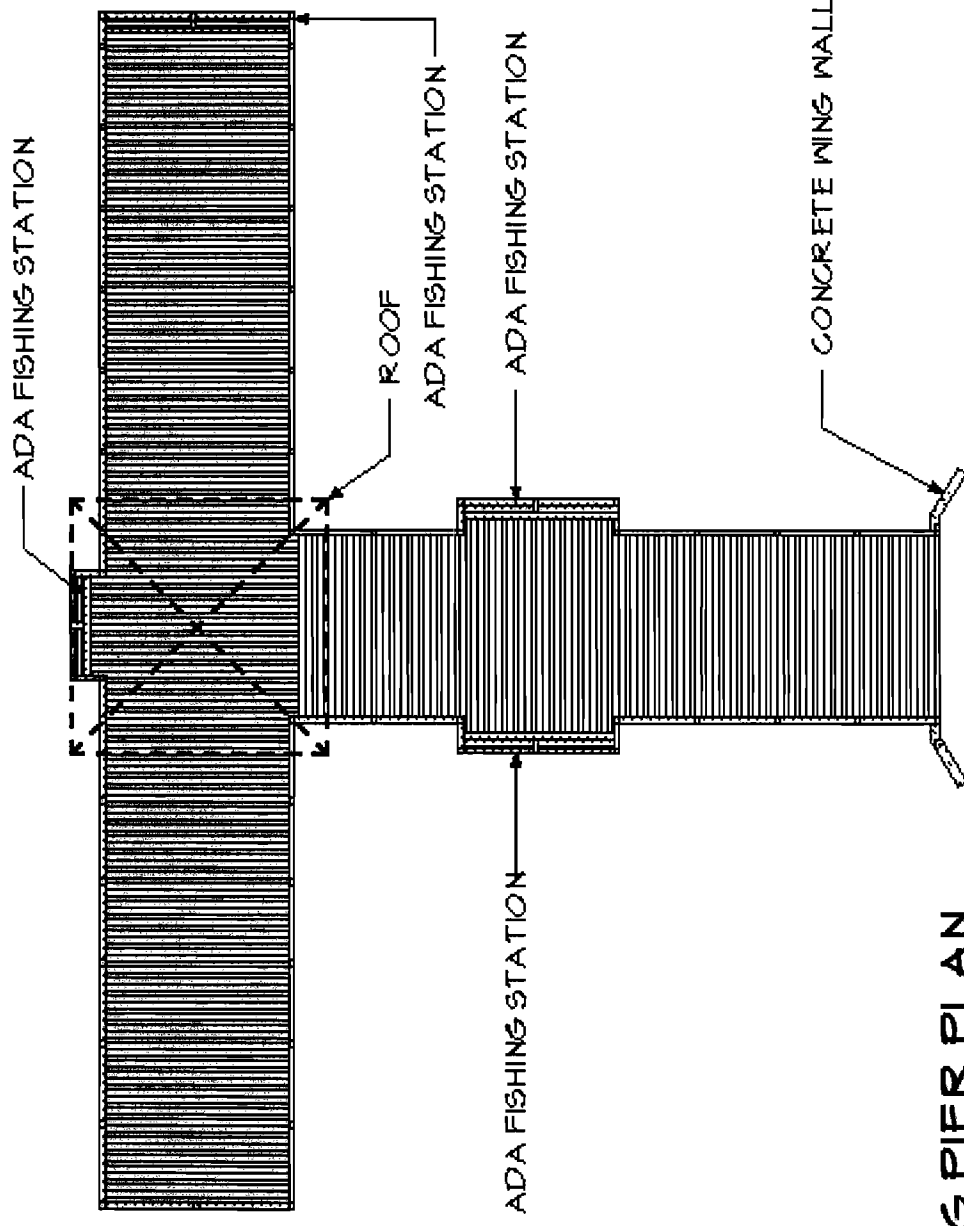
Environmental Assessment Acquisition of Fourche Bottoms
And Development of Nature Appreciation Facility

Pulaski County, Arkansas



Date: January 31, 2008

PRELIMINARY DRAWINGS
NOT FOR CONSTRUCTION



FISHING PIER PLAN

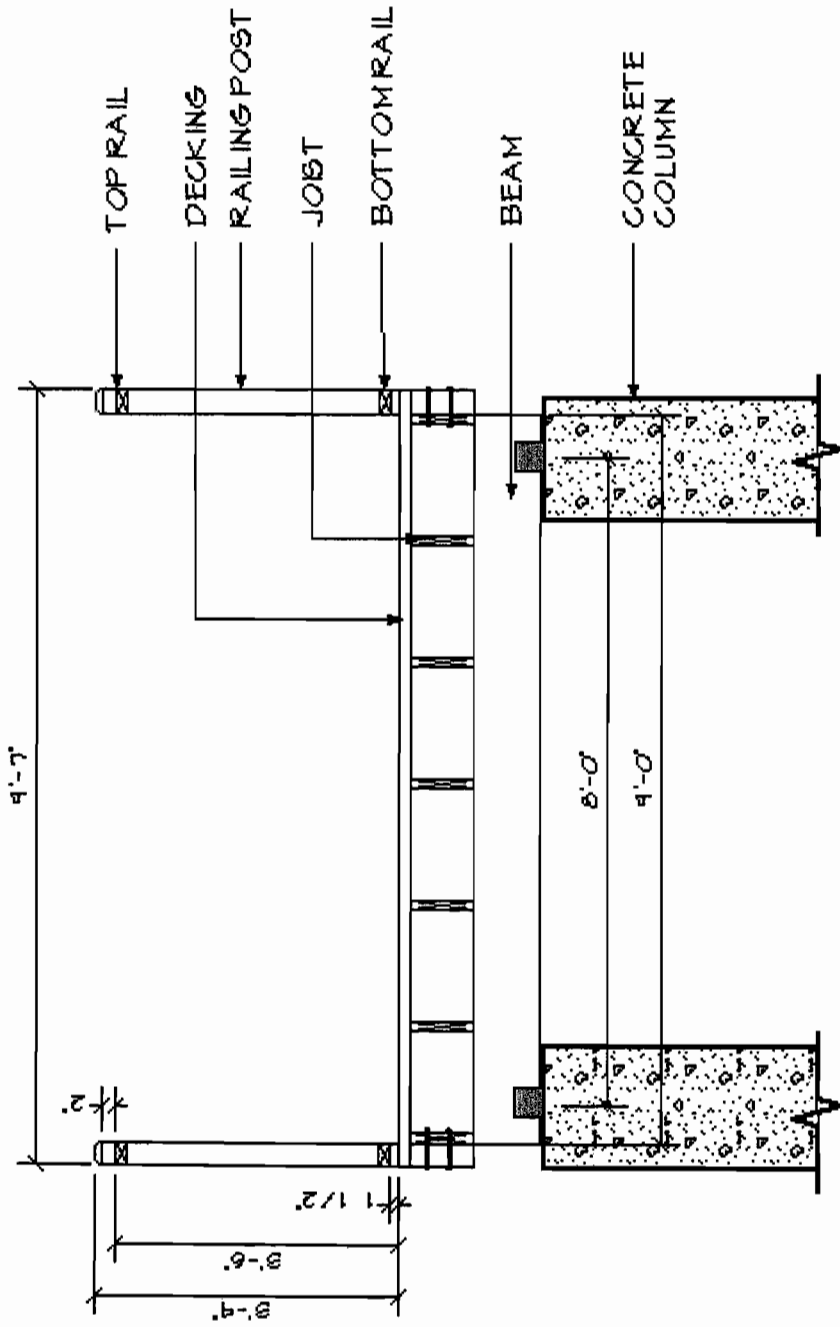
SCALE: 1/8" = 1'-0"

GEC
 Civil Engineers and Consultants
mesa
 TECHNOLOGY PARTNERSHIP

Date: January 31, 2008

Environmental Assessment Acquisition of Fourche Bottoms
 And Development of Nature Appreciation Facility
 Pulaski County, Arkansas

PRELIMINARY DRAWINGS
 NOT FOR CONSTRUCTION



FISHING PIER SECTION

SCALE: 1/2" = 1'-0"

Environmental Assessment Acquisition of Fourche Bottoms
And Development of Nature Appreciation Facility

Pulaski County, Arkansas



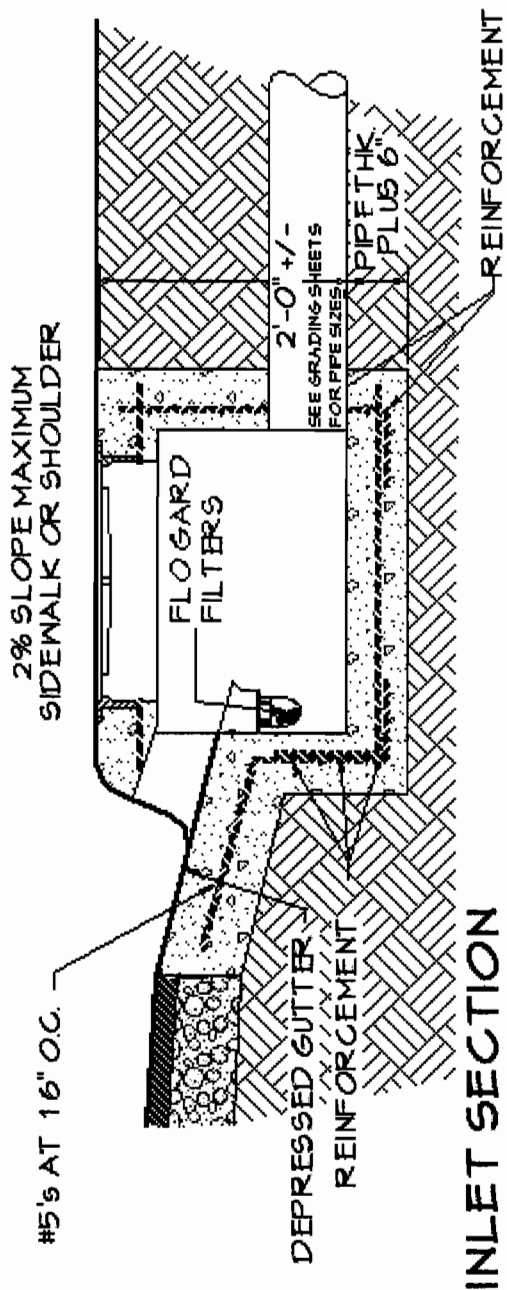
Civil Engineers and Geologists



LANDSCAPE ARCHITECTS, INC.

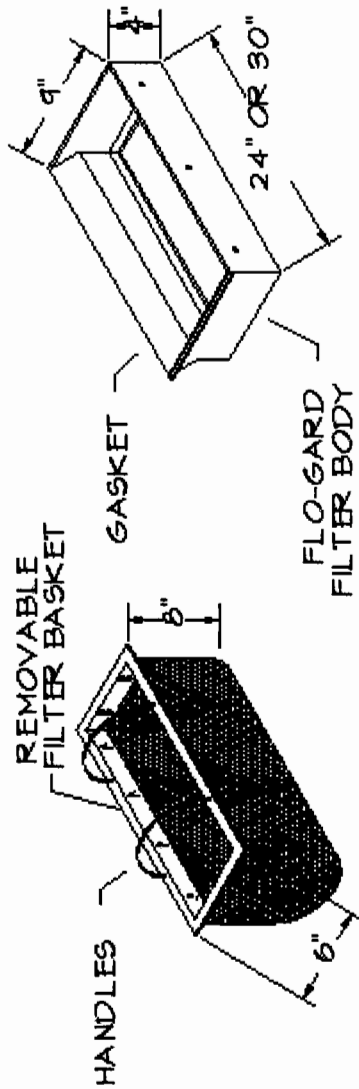
Date: January 31, 2003

PRELIMINARY DRAWINGS
NOT FOR CONSTRUCTION



INLET SECTION

SCALE: 3/4" = 1'-0"



FLO GARD FILTER

NOT TO SCALE

Environmental Assessment Aquisition of Fourche Bottoms
And Development of Nature Appreciation Facility

Pulaski County, Arkansas

STEEL ANGLE WELDED TO POST
8.5 X 11 GRAPHIC PANEL

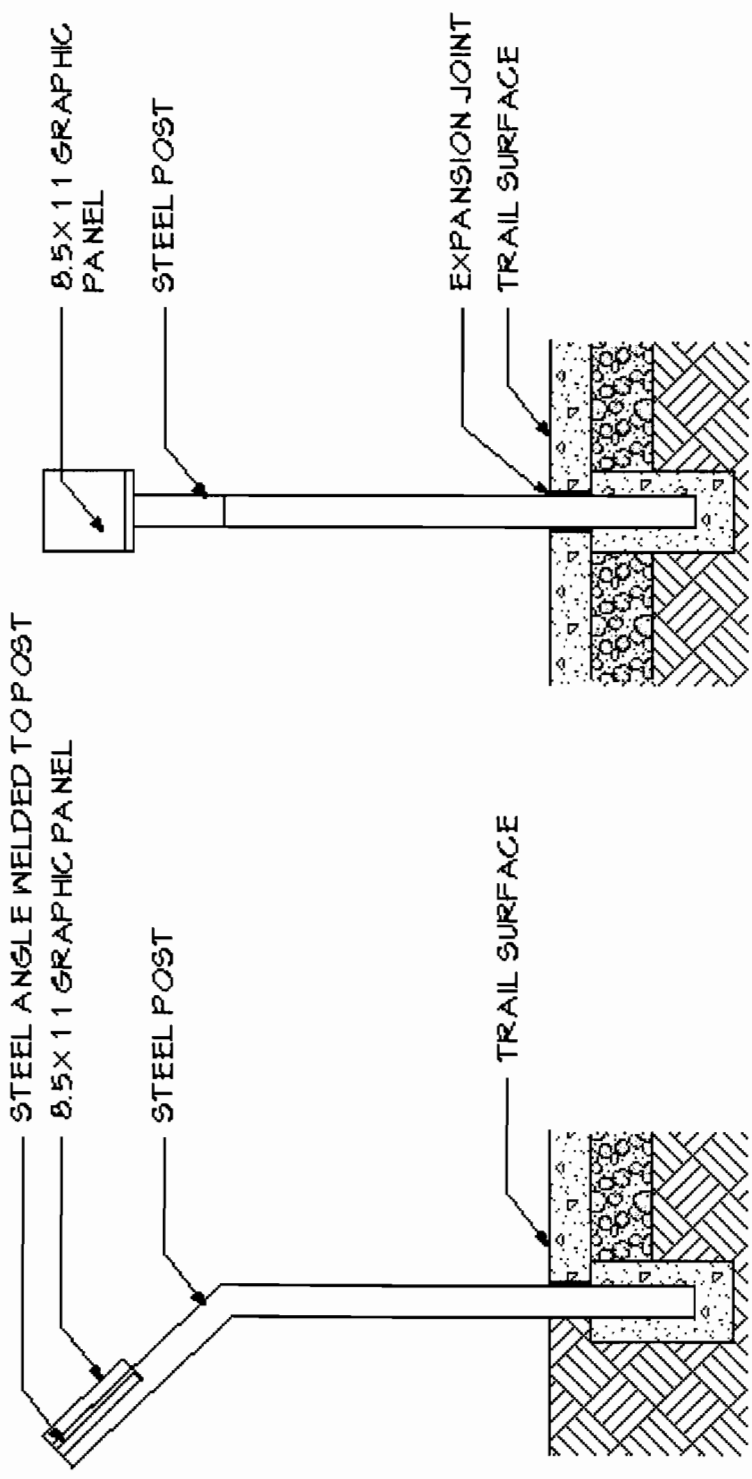
STEEL POST

TRAIL SURFACE

8.5 X 11 GRAPHIC
PANEL

STEEL POST

EXPANSION JOINT
TRAIL SURFACE



IDENTIFICATION GRAPHIC PANEL

SCALE: 3/4" = 1'-0"

Environmental Assessment Aquisition of Fourche Bottoms
And Development of Nature Appreciation Facility

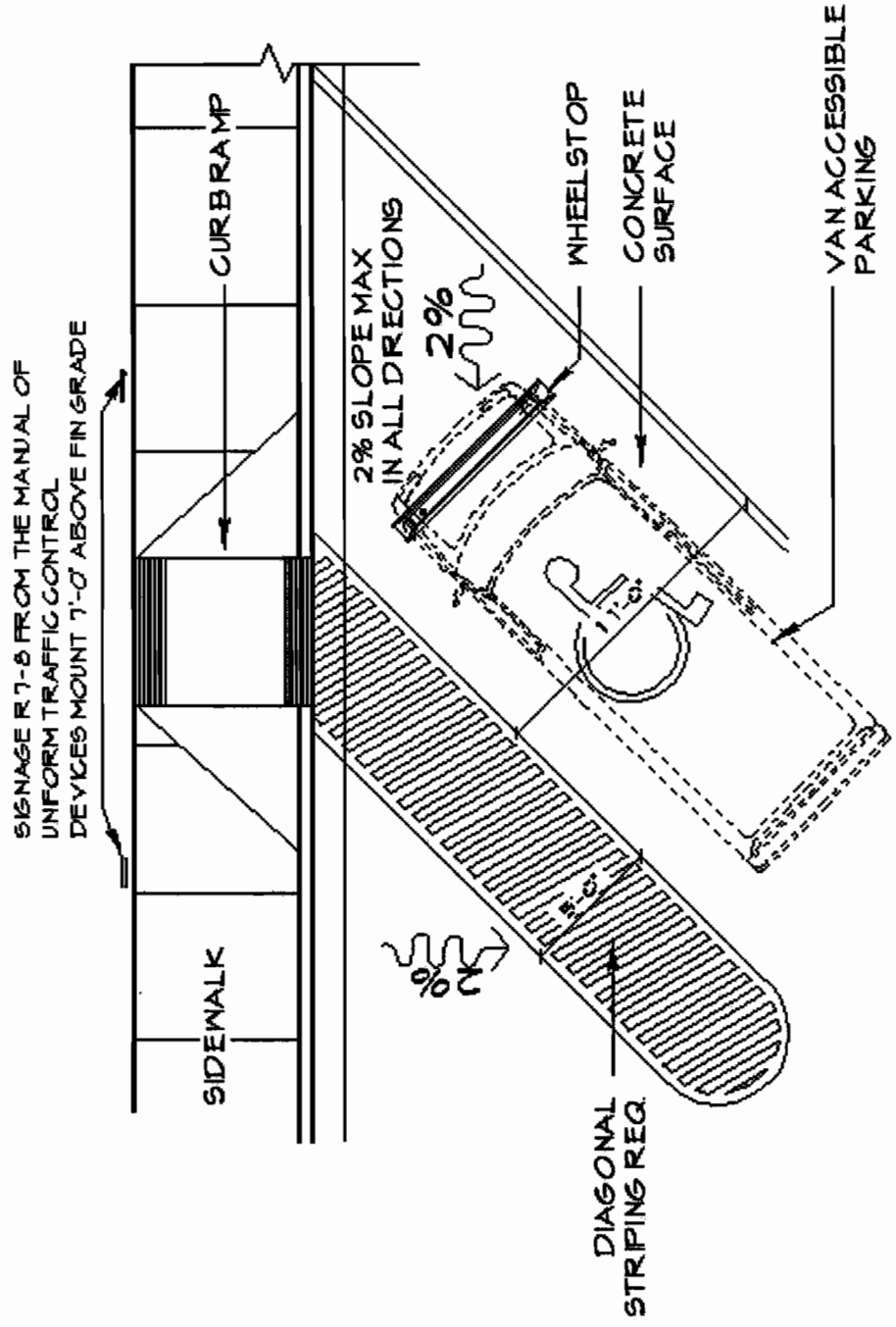
Pulaski County, Arkansas

GEC
Civil Engineers and Geologists

mesa
ENGINEERING ARCHITECTS, INC.

Date: January 31, 2008

PRELIMINARY DRAWINGS
NOT FOR CONSTRUCTION



ADA PARKING

SCALE: 3/16" = 1'-0"

Environmental Assessment Aquisition of Fourche Bottoms
And Development of Nature Appreciation Facility

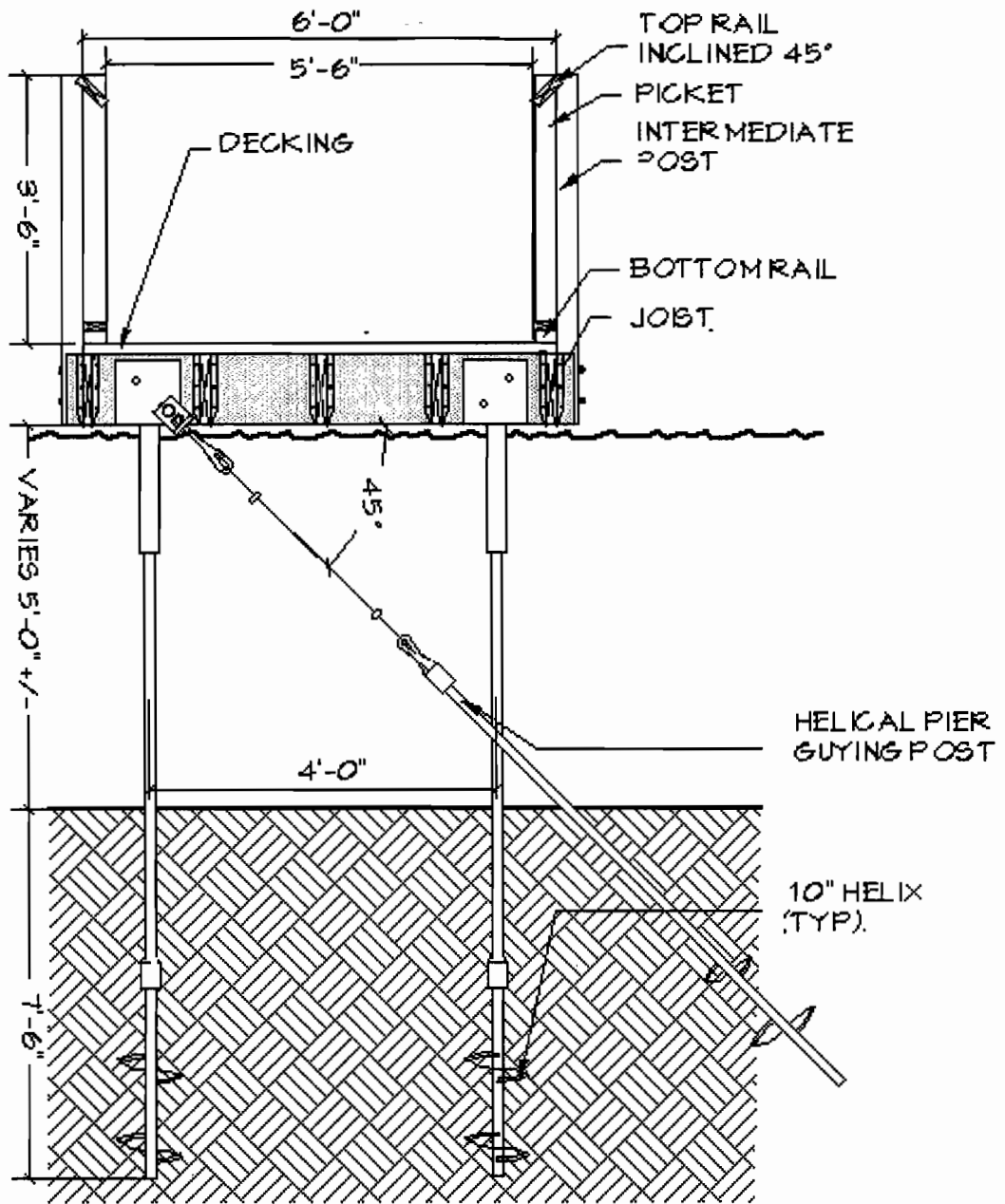
Pulaski County, Arkansas

PRELIMINARY DRAWINGS
NOT FOR CONSTRUCTION

GEC
Civil Engineers and Geologists

mesa
CONSULTING ENGINEERS

Date: January 31, 2008



BOARDWALK CROSS SECTION

SCALE: NOT TO SCALE

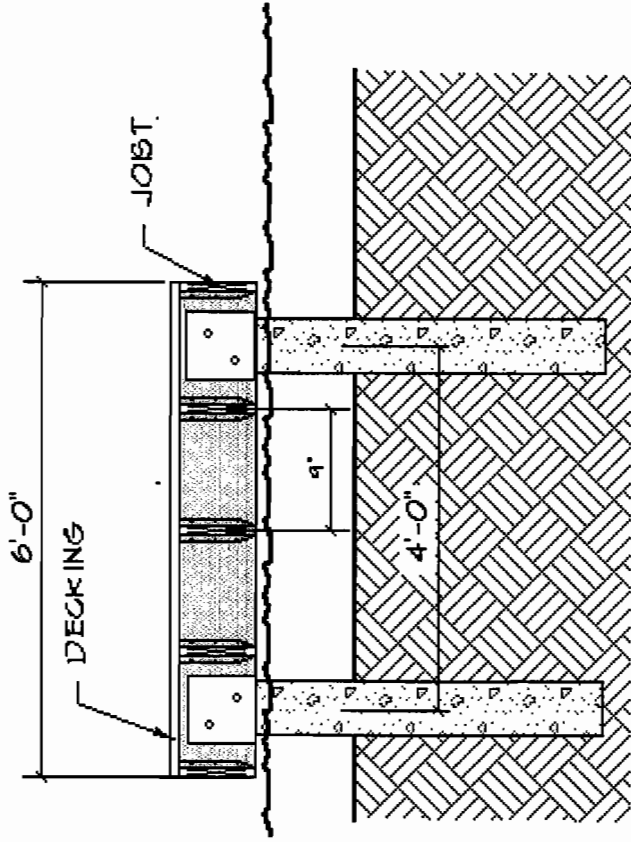
Environmental Assessment Acquisition of Fourche Bottoms
And Development of Nature Appreciation Facility

Pulaski County, Arkansas

PRELIMINARY DRAWINGS
NOT FOR CONSTRUCTION



Date: January 31, 2008



BOARDWALK W/O RAILING WITH CONCRETE PIERS

SCALE: NOT TO SCALE

Environmental Assessment Aquisition of Fourche Bottoms
And Development of Nature Appreciation Facility

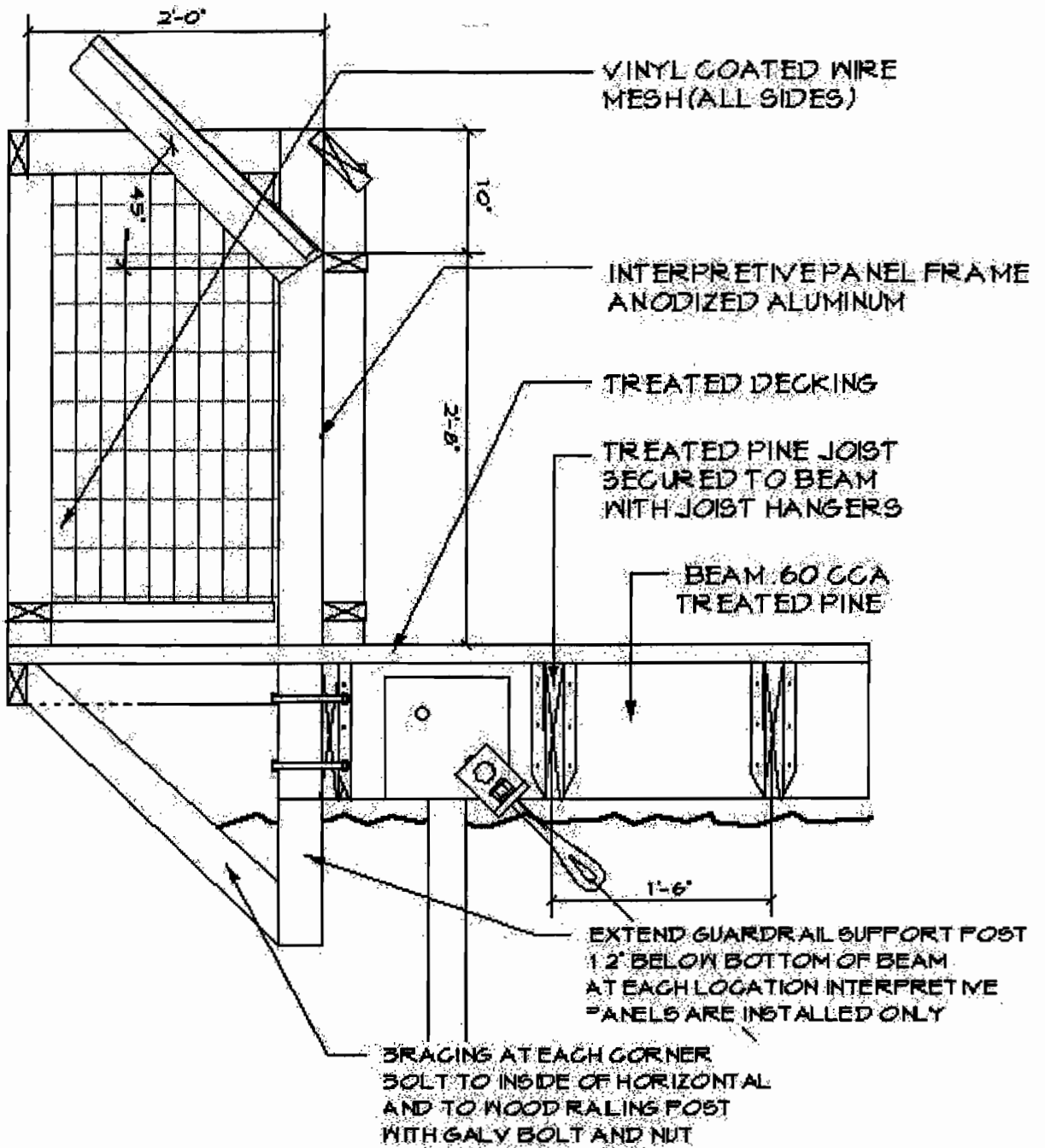
Pulaski County, Arkansas

GEC
Civil Engineers and Geologists

mesa
LANDSCAPE ARCHITECTS, INC.

Date: January 31, 2008

PRELIMINARY DRAWINGS
NOT FOR CONSTRUCTION



INTERPRETIVE PANEL ON BOARDWALK

SCALE: 1" = 1'-0"

Environmental Assessment Acquisition of Fourche Bottoms
And Development of Nature Appreciation Facility

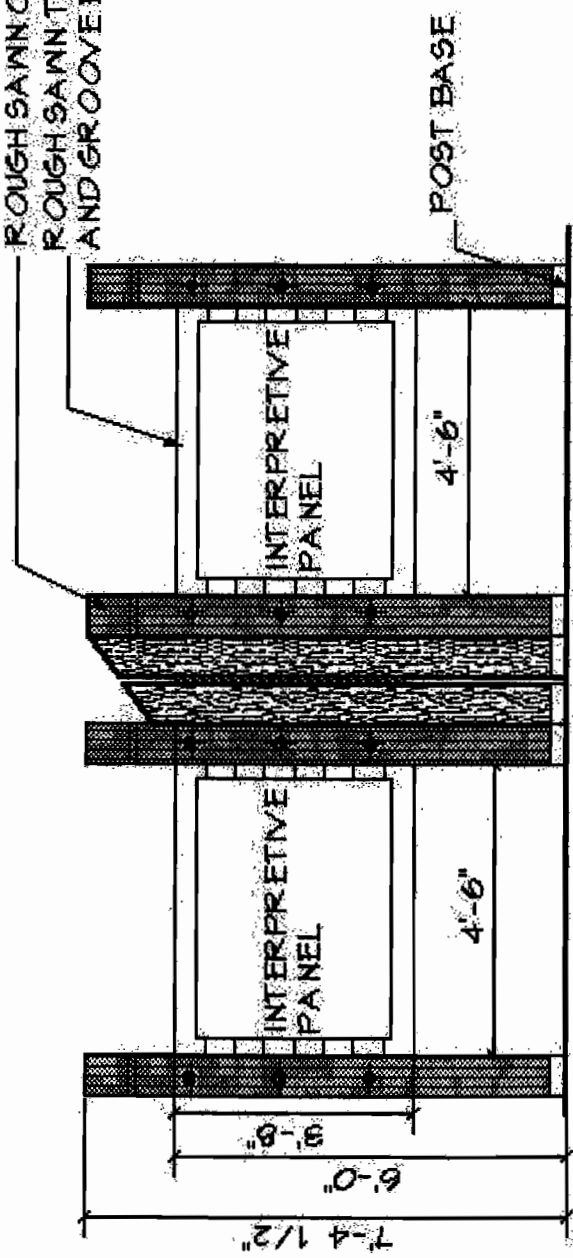
Pulaski County, Arkansas

PRELIMINARY DRAWINGS
NOT FOR CONSTRUCTION



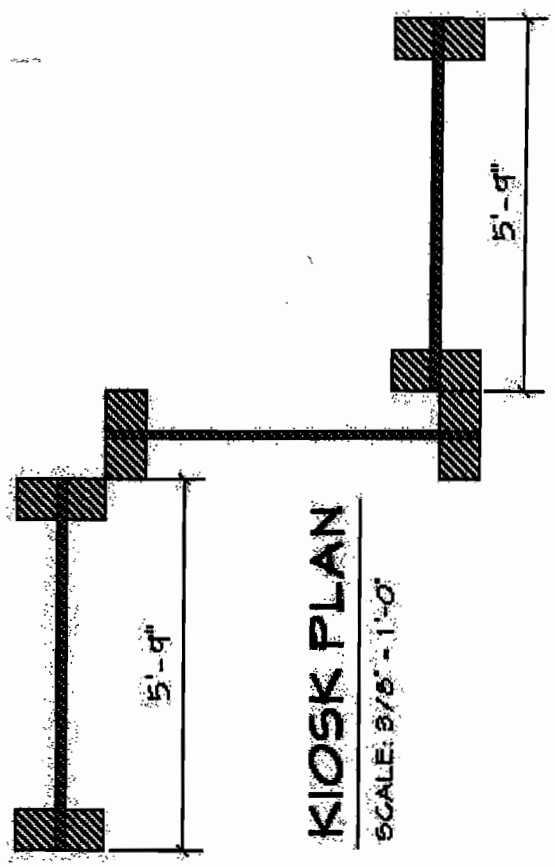
Date: January 31, 2008

ROUGH SAWN COLUMN
 ROUGH SAWN TONGUE
 AND GROOVE BACKING



KIOSK ELEVATION

SCALE: 3/8" = 1'-0"



KIOSK PLAN

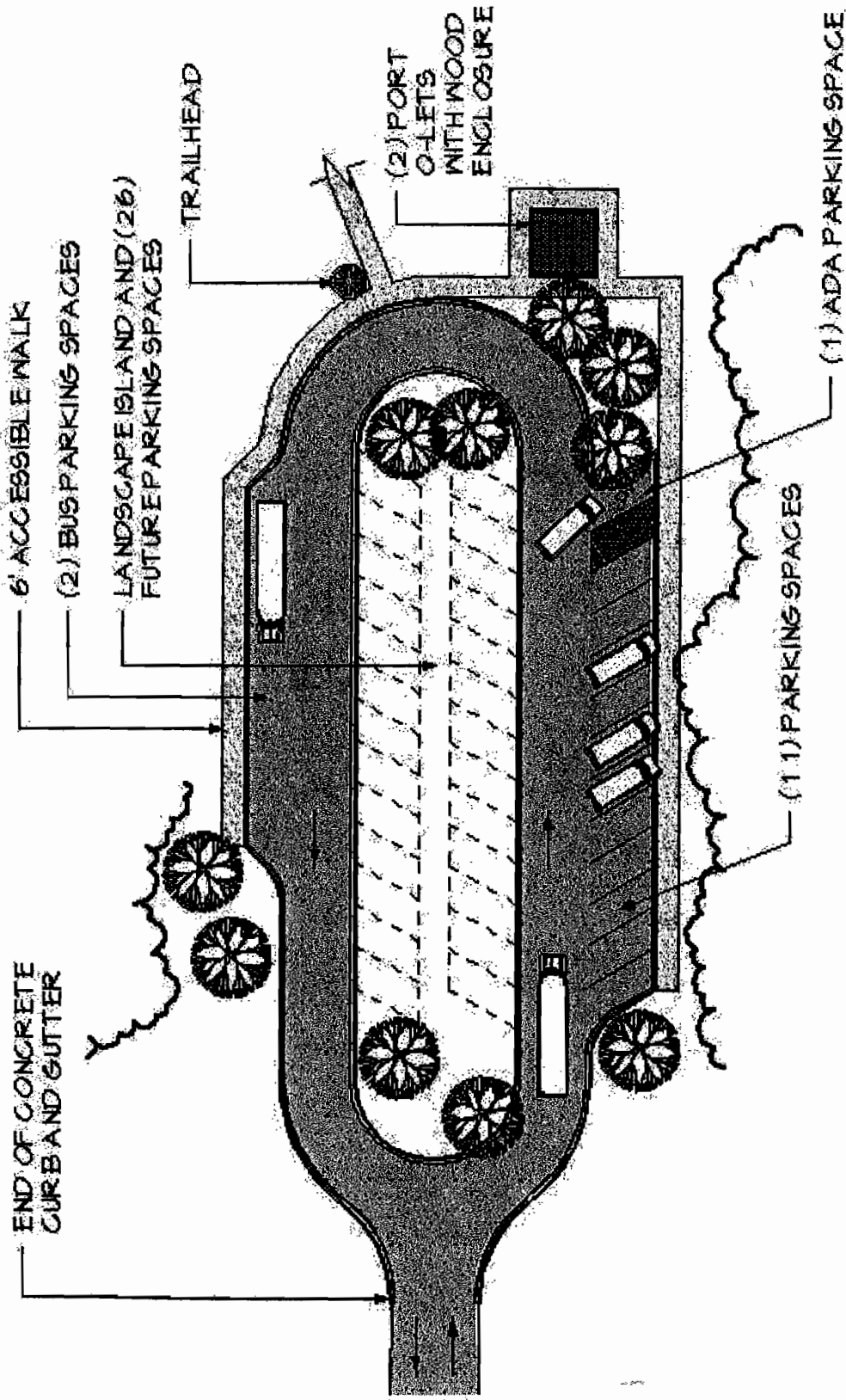
SCALE: 3/8" = 1'-0"

Environmental Assessment Acquisition of Fourche Bottoms
 And Development of Nature Appreciation Facility

Pulaski County, Arkansas

GEC
 Civil Engineers and Geographers
mesa
 CONSULTING ENGINEERS
 Date: January 31, 2003

PRELIMINARY DRAWINGS
 NOT FOR CONSTRUCTION



LARGE PARKING LOT AND TRAILHEAD

SCALE: 1" = 40'-0"

GEC
Civil Engineers and Geologists

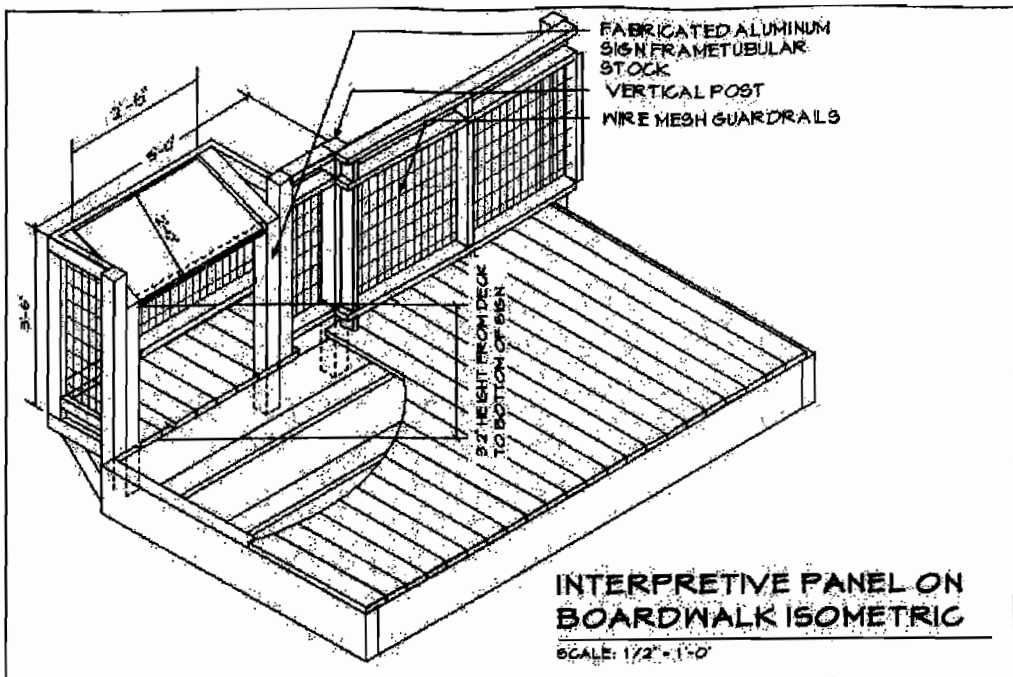
mesa
LANDSCAPE ARCHITECTS

Date: January 31, 2008

Environmental Assessment Aquisition of Fourche Bottoms
And Development of Nature Appreciation Facility

Pulaski County, Arkansas

PRELIMINARY DRAWINGS
NOT FOR CONSTRUCTION



Environmental Assessment Acquisition of Fourche Bottoms
And Development of Nature Appreciation Facility

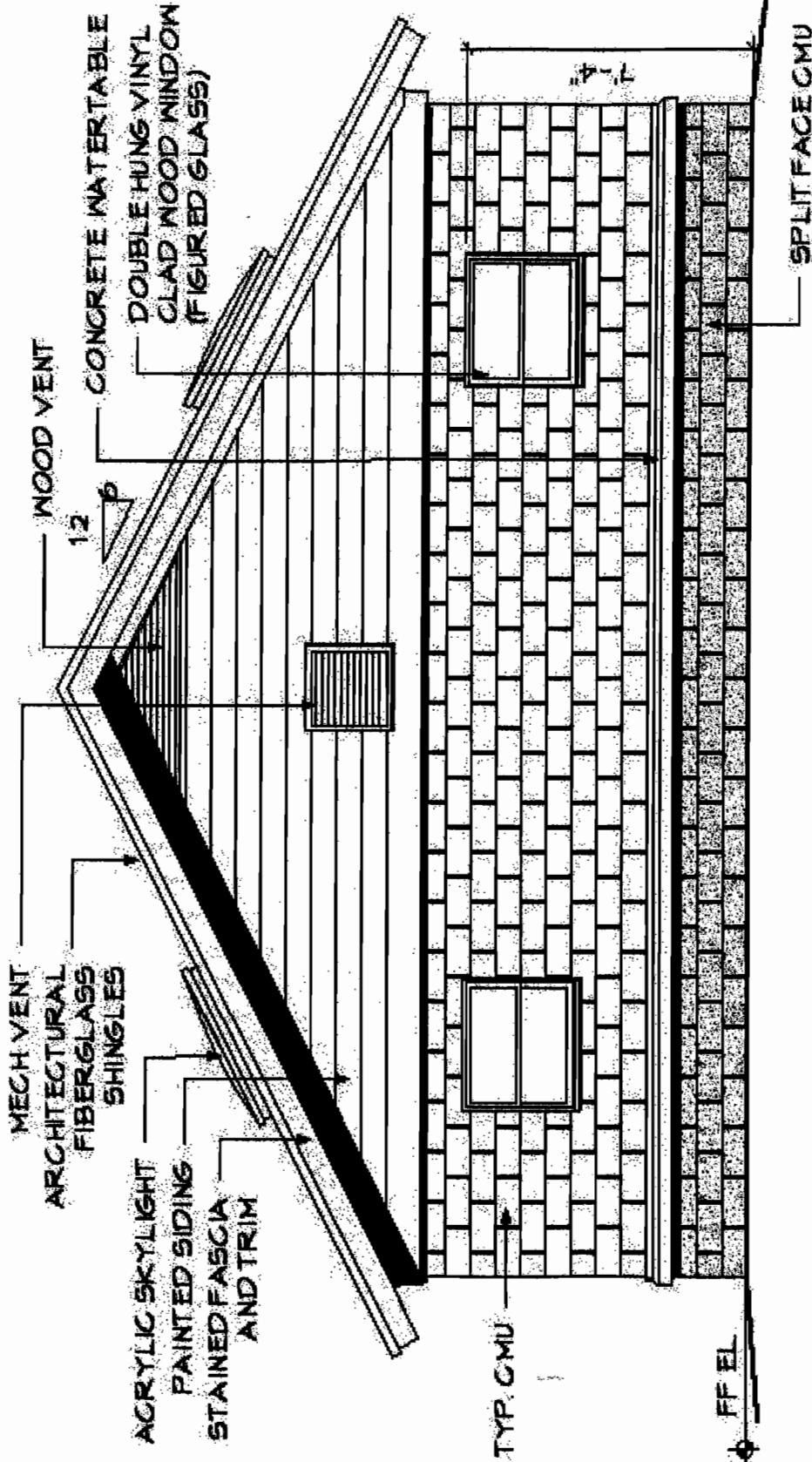
Pulaski County, Arkansas

PRELIMINARY DRAWINGS
NOT FOR CONSTRUCTION

GEC
Civil Engineers and Geologists

mesa

Date: January 31, 2008



RESTROOM BACK ELEVATION

SCALE: 1/4" = 1'-0"

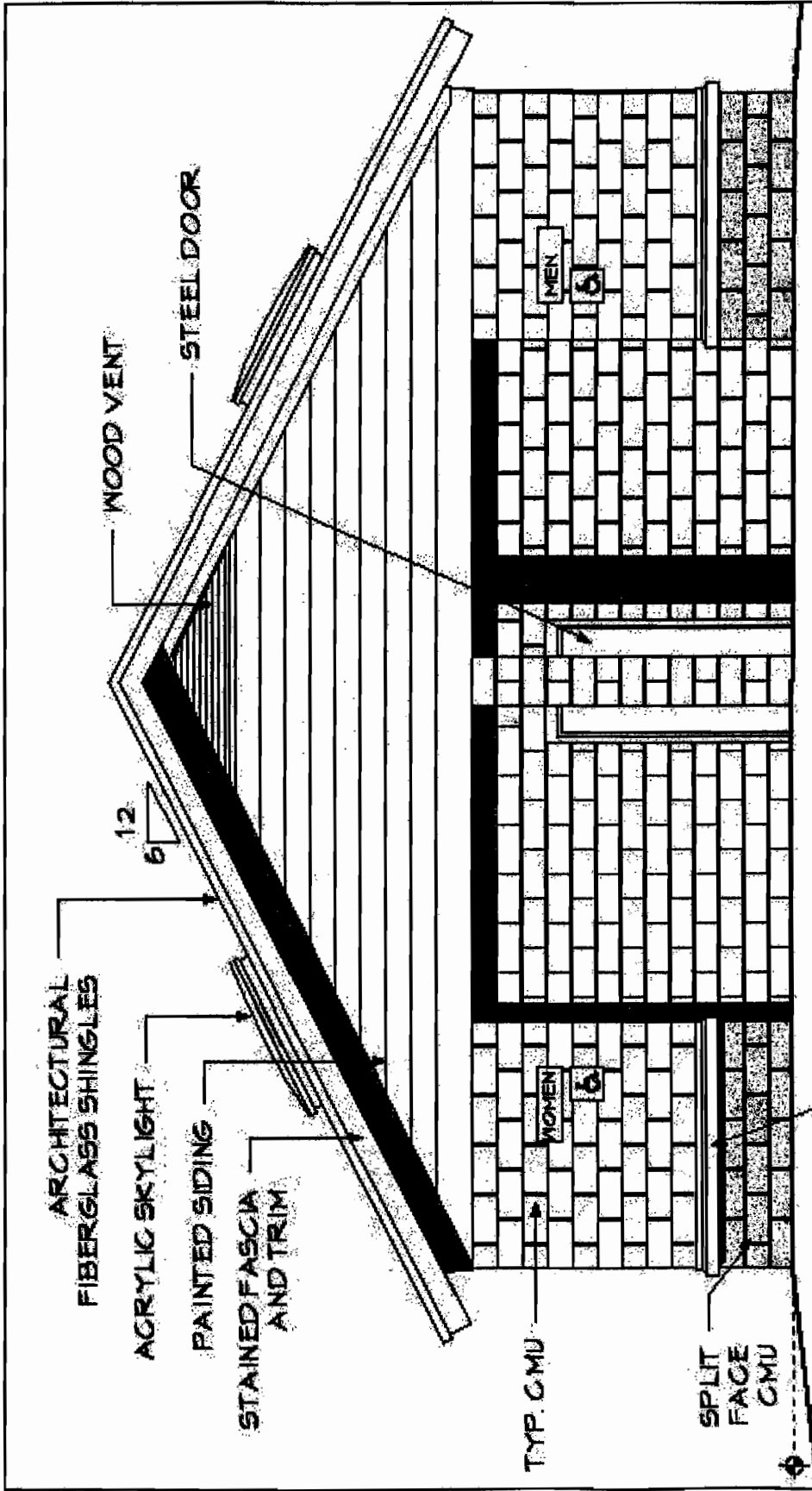
Environmental Assessment, Acquisition of Fourche Bottoms
And Development of Nature Appreciation Facility

Pulaski County, Arkansas



Date: January 31, 2006

PRELIMINARY DRAWINGS
NOT FOR CONSTRUCTION



RESTROOM FRONT ELEVATION

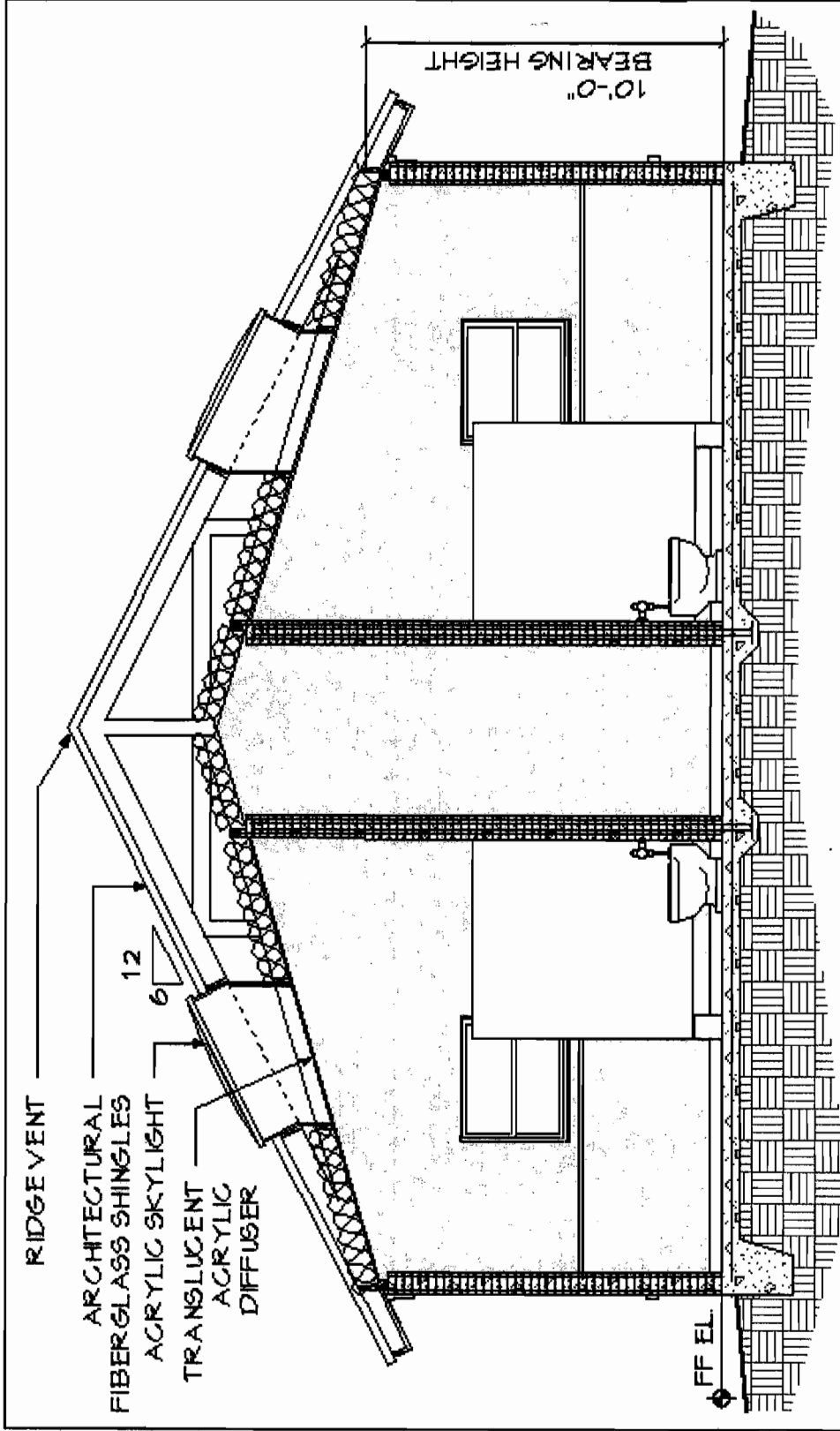
SCALE: 1/4" = 1'-0"

Environmental Assessment, Acquisition of Fourche Bottoms
And Development of Nature Appreciation Facility

Pulaski County, Arkansas

GEC
Civil Engineers and Geologists
mesa
CONSULTING ENGINEERS, P.C.
Date: January 31, 2008

PRELIMINARY DRAWINGS
NOT FOR CONSTRUCTION



RESTROOM SECTION

SCALE: 1/4" = 1'-0"

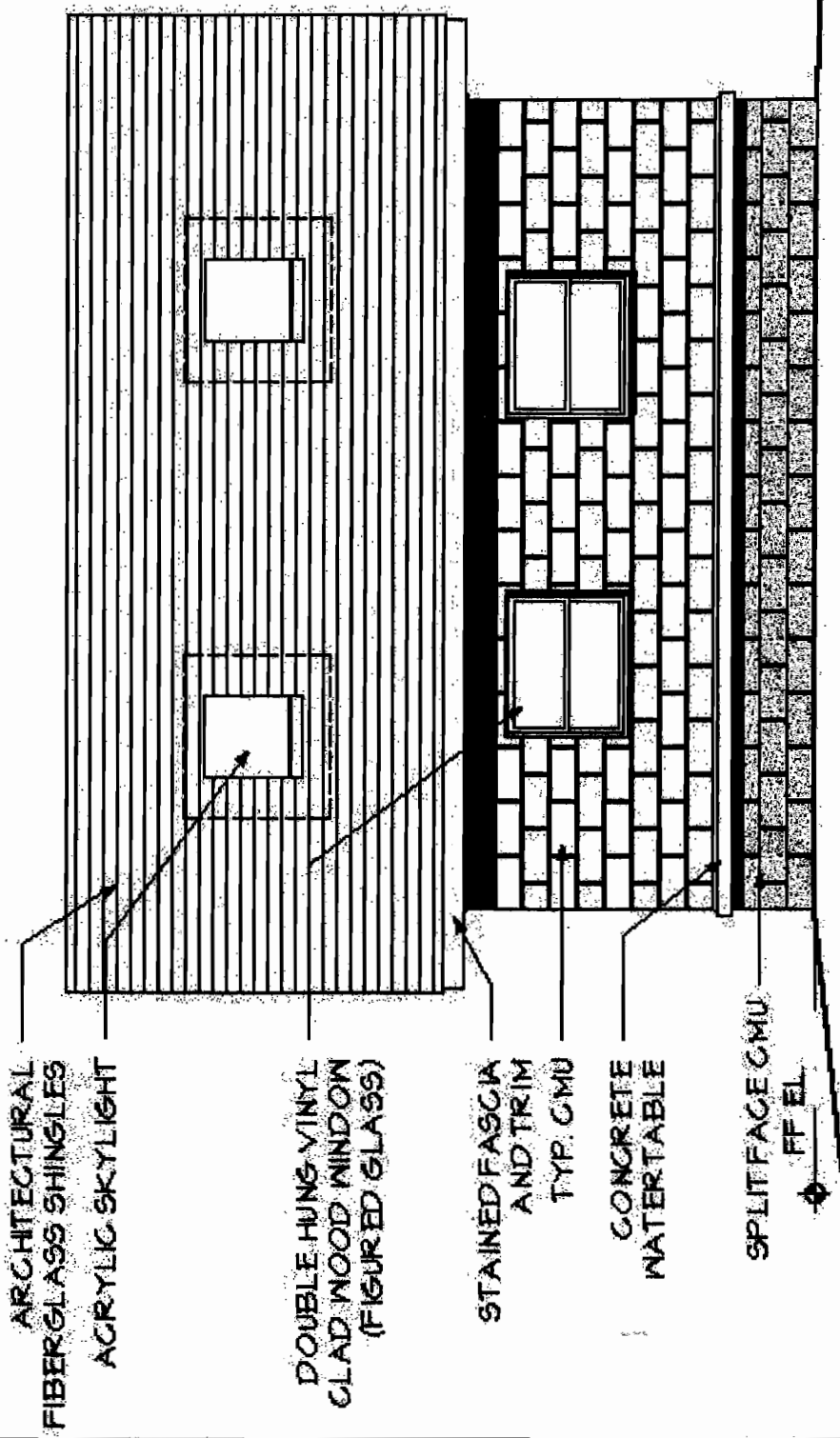
Environmental Assessment Aquisition of Fourche Bottoms
And Development of Nature Appreciation Facility

Pulaski County, Arkansas

PRELIMINARY DRAWINGS

GEC
Civil Engineers and Consultants
mesa
LANDSCAPE ARCHITECTS

Date: January 31, 2008



ARCHITECTURAL
FIBERGLASS SHINGLES

ACRYLIC SKYLIGHT

DOUBLE HUNG VINYL
CLAD WOOD WINDOW
(FIGURED GLASS)

STAINED FASCIA
AND TRIM
TYP. CMU

CONCRETE
WATER TABLE

SPLIT FACE CMU
FF EL.

RESTROOM SIDE ELEVATION

SCALE: 1/4" = 1'-0"

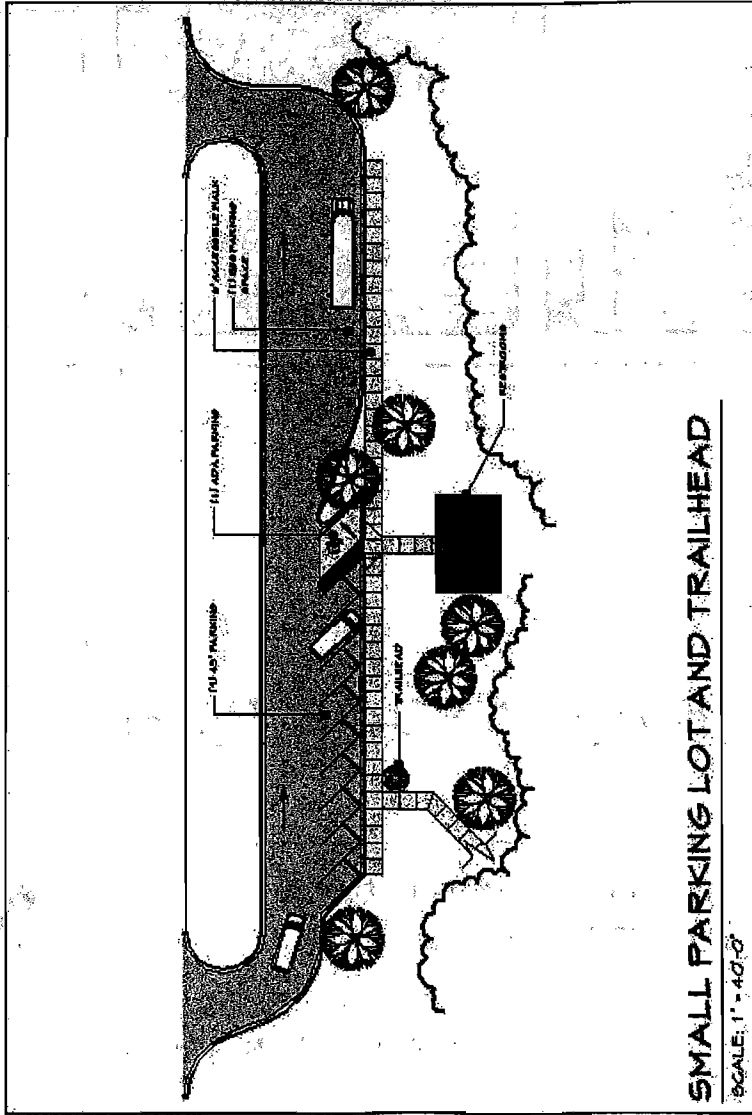
Environmental Assessment: Acquisition of Fourche Bottoms
And Development of Nature Appreciation Facility

Pulaski County, Arkansas



PRELIMINARY DRAWINGS
NOT FOR CONSTRUCTION

Date: January 31, 2006



SMALL PARKING LOT AND TRAILHEAD

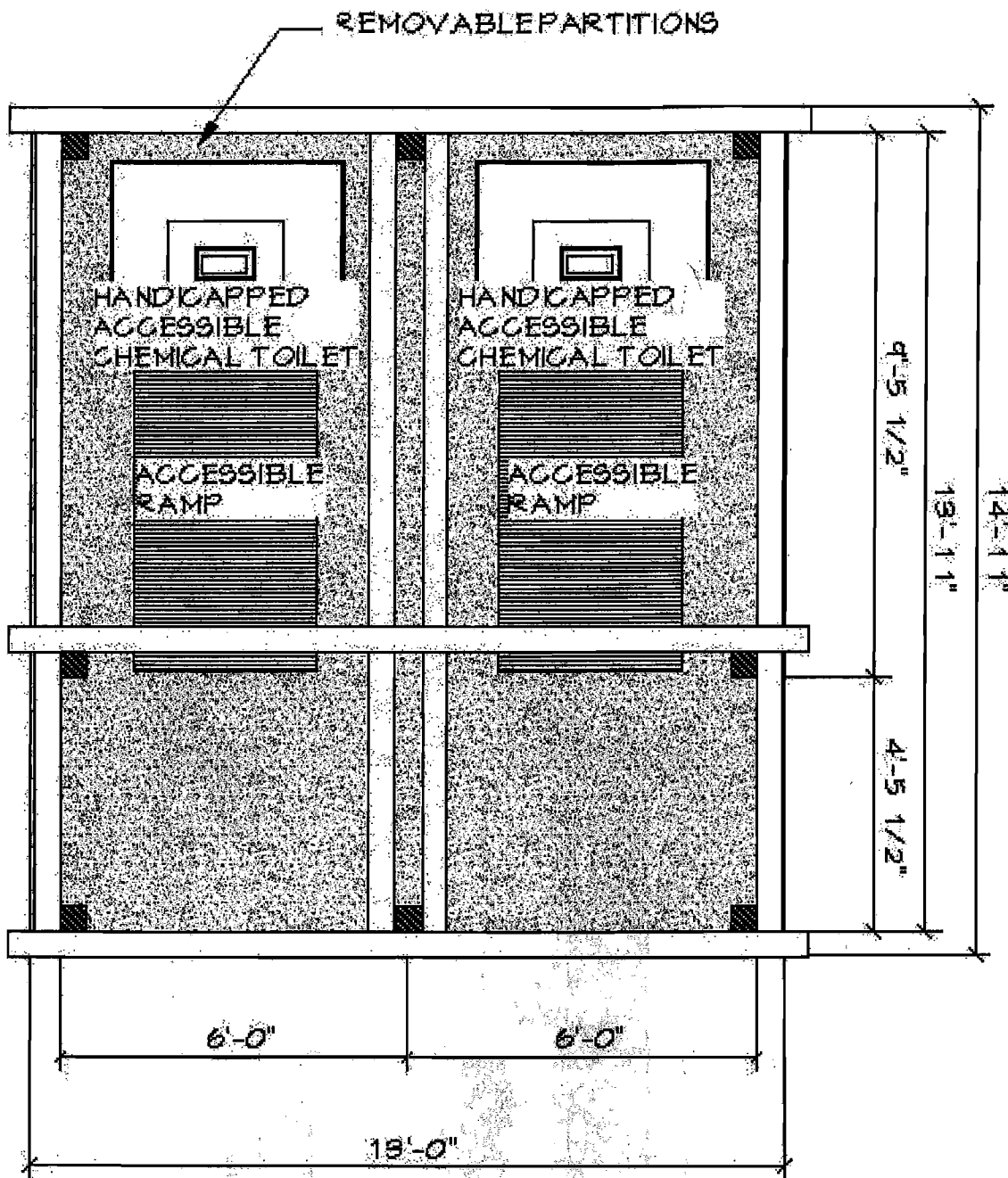
SCALE: 1" = 40'-0"

Environmental Assessment, Acquisition of Fourshe Bottoms
And Development of Nature Appreciation Facility

Fulaski County, Arkansas



PRELIMINARY DRAWINGS
NOT FOR CONSTRUCTION | Date: January 31, 2008



TOILET ENCLOSURE ARBOR PLAN

SCALE: 3/8" = 1'-0"

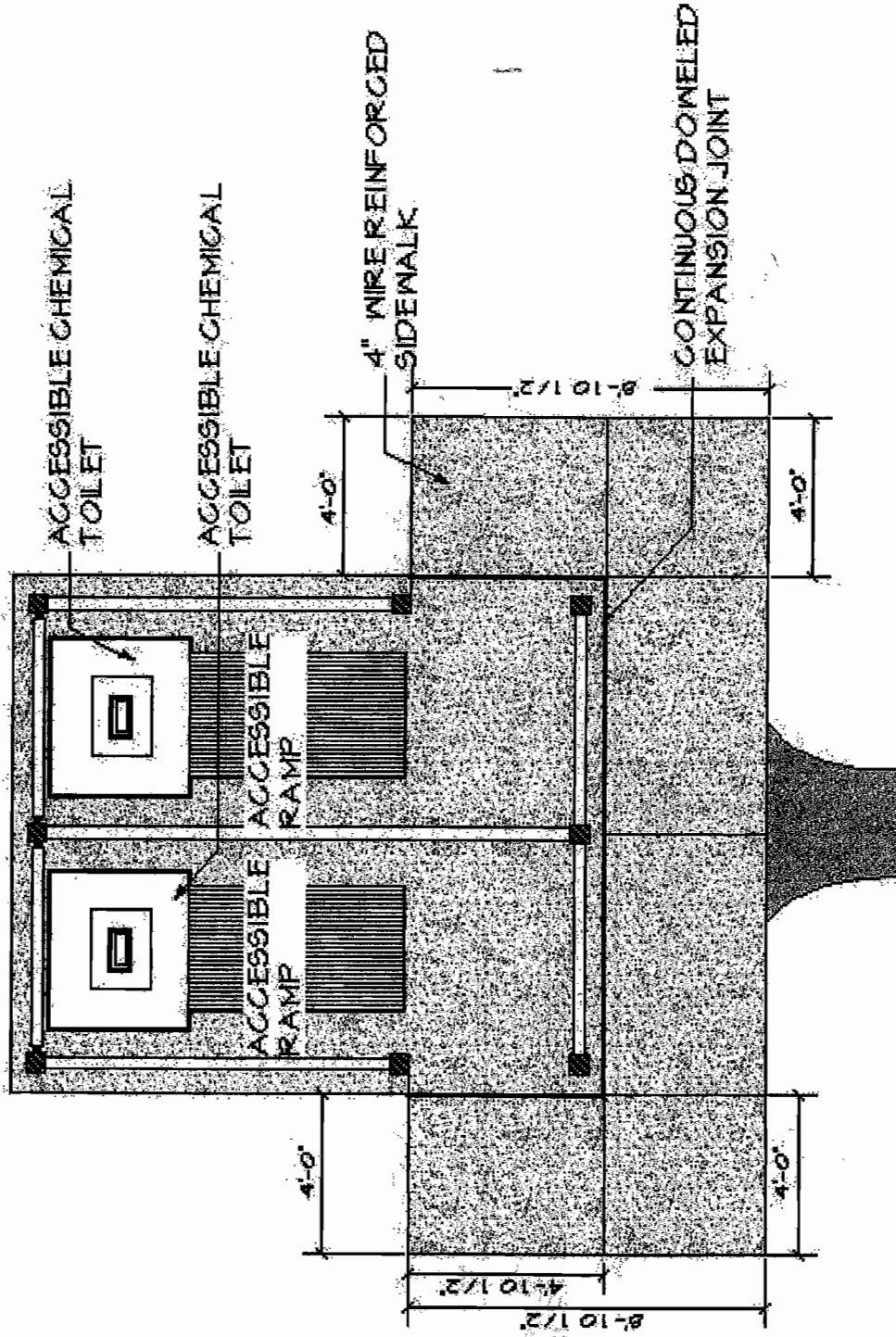
Environmental Assessment Acquisition of Fourche Bottoms
And Development of Nature Appreciation Facility

Pulaski County, Arkansas

PRELIMINARY DRAWINGS
NOT FOR CONSTRUCTION



Date: January 31, 2008



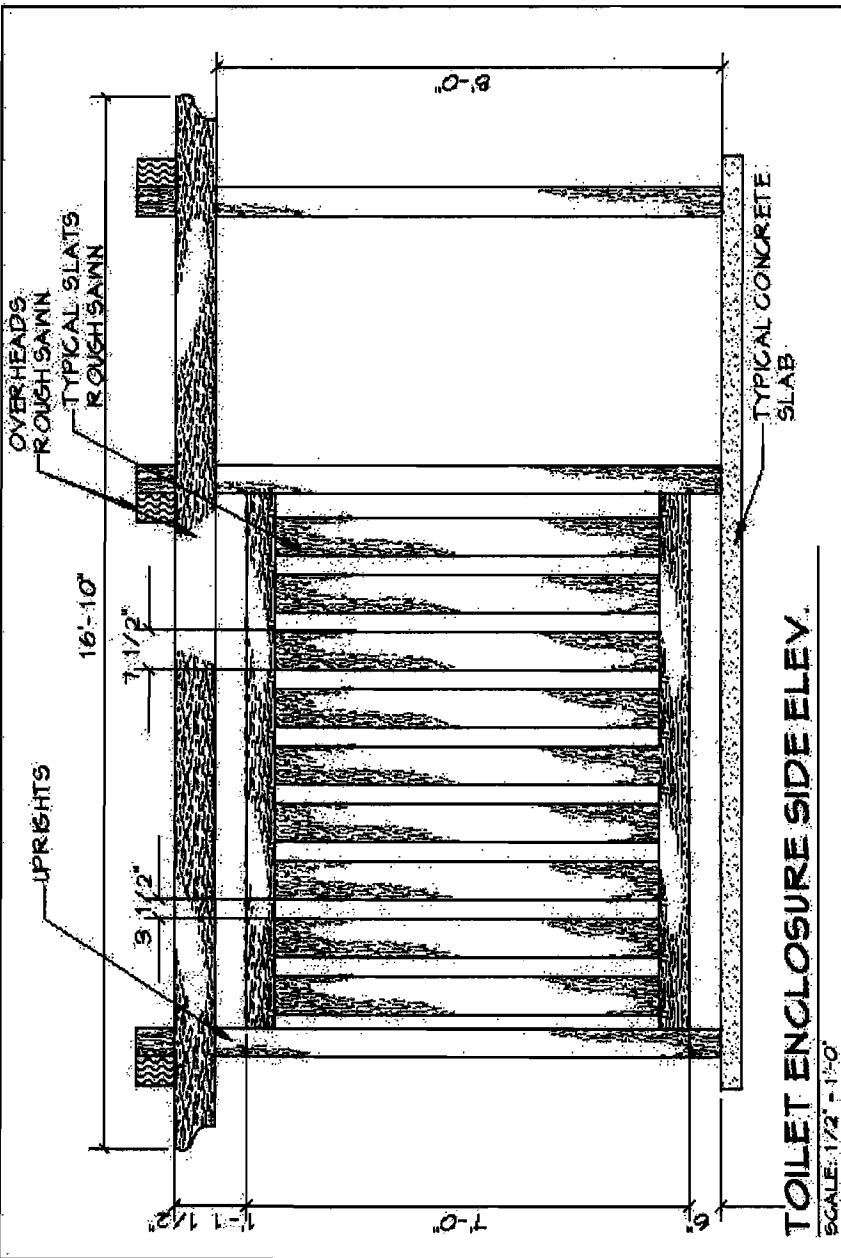
TOILET ENCLOSURE SIDEWALK PLAN

SCALE: 1/4" = 1'-0"

Environmental Assessment, Acquisition of Fourche Bottoms
 And Development of Nature Appreciation Facility

Pulaski County, Arkansas

PRELIMINARY DRAWINGS
 NOT FOR CONSTRUCTION



TOILET ENCLOSURE SIDE ELEV.

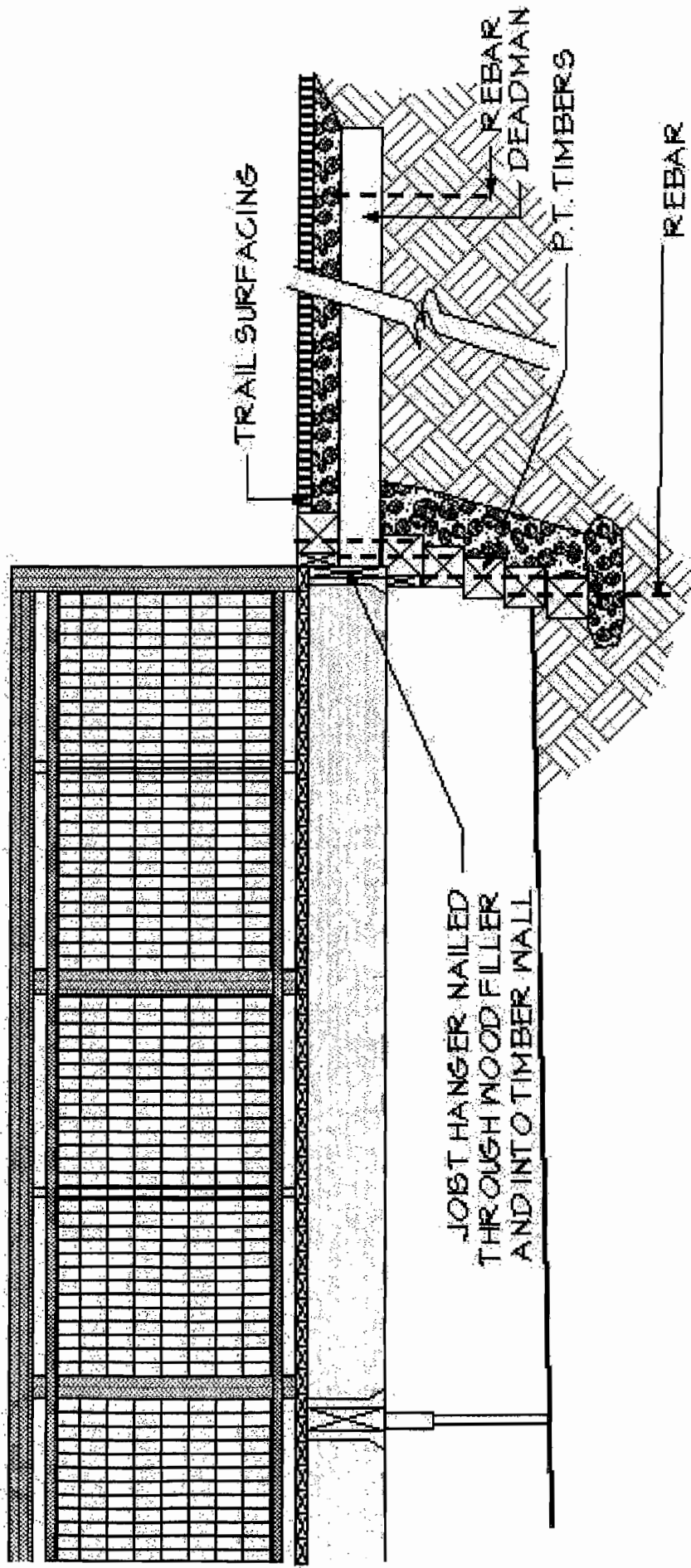
Environmental Assessment: Acquisition of Fourche Bottoms
 And Development of Nature Appreciation Facility

Pulaski County, Arkansas

GEC
 GUYER ENGINEERING CONSULTANTS
mesa
 CONSULTANTS

PRELIMINARY DRAWINGS
 NOT FOR CONSTRUCTION

Date: January 31, 2008



TRAIL TO BOARDWALK CONNECTION

SCALE: 1/2" = 1'-0"

Environmental Assessment, Acquisition of Fourche Bottoms
 And Development of Nature Appreciation Facility

Pulaski County, Arkansas

GEC
 Civil Engineers and Geologists
mesa
 TECHNOLOGY SPECIALISTS, INC.
 Date: January 31, 2008

PRELIMINARY DRAWINGS
 NOT FOR CONSTRUCTION

