

the condition of education 2007



INDICATOR 19

Youth Neither in School nor Working

The indicator and corresponding tables are taken directly from *The Condition of Education 2007*. Therefore, the page numbers may not be sequential.

Additional information about the survey data and supplementary notes can be found in the full report. For a copy of *The Condition of Education 2007*, visit the NCES website (<http://nces.ed.gov/pubsearch/pubsinfo.asp?pubid=2007064>) or contact ED PUBs at 1-877-4ED-PUBS.

Suggested Citation:

U.S. Department of Education, National Center for Education Statistics. (2007). *The Condition of Education 2007* (NCES 2007-064). Washington, DC: U.S. Government Printing Office.



Social and Cultural Outcomes

Youth Neither in School nor Working

In 2006, about 8 percent of youth ages 16–19 were neither enrolled in school nor working.

There are many reasons why youth between the ages of 16 and 19 may neither be enrolled in school nor working. For example, they may be seeking but unable to find work, or they may have left the workforce or school, either temporarily or permanently, to start a family. This indicator provides information on youth at a time when most are transitioning into postsecondary education or the workforce. This is a critical period for young people as they pursue their educational goals and career paths.

From 1986 through 2006, the percentage of youth ages 16–19 neither enrolled in school nor working remained between 7 and 10 percent annually (see supplemental table 19-1). Within any single year, the percentage of such youth varied across certain subgroups of the population. In 2006, for example, the percentage of such youth varied by age, education, race/ethnicity, citizenship, and family poverty, though it was not measurably different by sex.

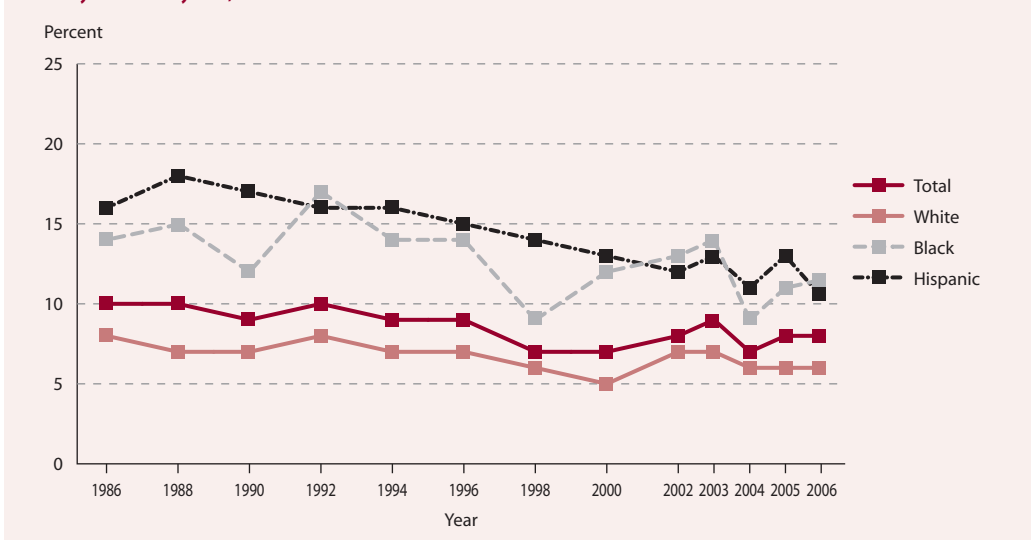
Differences were found by race/ethnicity and citizenship. In each year observed, higher percentages of Black and Hispanic youth than White youth were neither enrolled in school nor working. In 2006, 11 percent each of Hispanic and Black youth were

neither enrolled in school nor working, compared with 6 percent each of White and Asian youth. A greater percentage of non-U.S. citizen youth (13 percent) were neither enrolled in school nor working than U.S.-born youth (7 percent).

Family poverty was positively related to the prevalence of youth who were neither enrolled in school nor working. In each year observed from 1986 to 2006, the percentage of such youth was higher among youth from poor and near-poor families than among youth from nonpoor families. In 2006, these percentages were 17 percent, 10 percent, and 5 percent, respectively.

In 2006, about 12 percent of youth ages 18–19 were neither in school nor working, compared with 4 percent of youth ages 16–17. Higher percentages of youth ages 18–19 than youth ages 16–17 were neither in school nor working across all years observed. Of youth with less than a high school diploma or the equivalent, a greater percentage of youth ages 18–19 than youth ages 16–17 were neither in school nor working in 2006 (13 vs. 3 percent). This pattern held true for all years observed.

YOUTH EMPLOYMENT: Percentage of youth ages 16–19 who were neither enrolled in school nor working, by race/ethnicity: Selected years, 1986–2006



NOTE: Race categories exclude persons of Hispanic ethnicity. The Current Population Survey (CPS) questions used to obtain educational attainment data were changed in 1992. In 1994, the survey instrument for the CPS was changed and weights were adjusted. Estimates are revised from previous editions. The data presented here represent the percentage of civilian, noninstitutionalized 16- to 19-year-olds who are neither enrolled in school nor working. See supplemental note 2 for more information on the CPS and for an explanation of the "neither enrolled nor working" variable.

SOURCE: U.S. Department of Commerce, Census Bureau, Current Population Survey (CPS), March and Annual Social and Economic Supplement, selected years, 1986–2006.

FOR MORE INFORMATION:
Supplemental Notes 1, 2
Supplemental Table 19-1



Youth Neither in School nor Working

Table 19-1. Percentage of youth ages 16–19 who were neither enrolled in school nor working, by selected characteristics: Selected years, 1986–2006

Characteristic	1986	1988	1990	1992	1994	1996	1998	2000	2002	2003	2004	2005	2006
Total	9.8	9.5	9.1	10.0	9.3	9.3	7.3	7.5	8.4	8.8	7.2	8.0	7.6
Sex													
Male	8.7	7.8	7.6	8.3	8.0	8.1	7.3	6.4	8.3	9.1	6.9	7.7	7.1
Female	11.0	11.3	10.5	11.7	10.6	10.5	7.3	8.7	8.5	8.5	7.4	8.3	8.1
Age													
16–17	4.9	4.3	4.6	4.9	4.6	4.6	3.4	3.8	3.6	3.8	3.5	3.6	3.5
18–19	14.8	14.9	13.2	15.0	14.1	14.2	11.5	11.2	13.4	14.5	11.5	13.1	12.5
Education and age													
Less than high school diploma or equivalent													
16–17	4.6	4.1	4.4	4.5	4.4	4.4	3.2	3.4	3.3	3.3	3.2	3.4	3.3
18–19	19.9	20.1	17.9	19.0	17.8	17.1	14.9	12.3	15.2	15.8	13.3	14.7	13.0
High school diploma or equivalent													
16–17	18.7!	17.7!	16.8!	25.2	17.2!	17.9!	10.2!	20.1	13.7!	26.3	17.4	12.3!	16.8
18–19	12.0	11.5	10.0	12.3	11.5	11.8	8.9	10.4	12.0	13.4	10.1	11.9	12.1
Race/ethnicity¹													
White	8.1	7.4	7.5	7.6	7.3	7.3	5.5	5.2	6.7	6.6	5.7	6.1	5.9
Black	14.4	15.0	12.1	16.9	13.7	13.7	9.5	12.2	12.9	14.2	9.3	11.3	11.5
Hispanic	15.9	17.7	17.1	15.7	15.7	15.2	13.7	13.4	12.2	13.1	11.5	12.7	10.6
Asian	—	—	—	—	—	—	—	—	—	3.6!	4.0!	4.7!	5.7
Citizenship													
U.S.-born	—	—	—	—	8.8	9.0	6.8	7.1	8.1	8.4	6.8	7.7	7.2
Naturalized U.S. citizen	—	—	—	—	14.4!	2.2!	9.6!	5.0!	4.5!	11.8!	5.4!	4.3!	8.3!
Non-U.S. citizen	—	—	—	—	15.6	14.2	14.5	12.5	13.0	14.0	12.0	12.7	13.5
Poverty²													
Poor	22.6	24.1	20.9	25.5	22.1	21.5	15.3	16.2	19.6	18.8	15.8	18.0	17.0
Near-poor	12.6	12.9	13.5	12.2	12.2	10.7	11.8	11.4	11.7	12.8	9.8	10.9	10.0
Nonpoor	5.2	5.1	5.1	4.8	4.2	5.3	4.0	4.2	5.1	5.5	4.5	4.7	4.6

— Not available.

! Interpret data with caution (estimates are unstable).

¹ Race categories exclude persons of Hispanic ethnicity. Other race/ethnicities are included in the total but are not shown separately. Prior to 2003, estimates for Asian only were not available.

² *Poor* is defined to include families below the poverty threshold, *near-poor* is defined to include families at 100–199 percent of the poverty threshold, and *nonpoor* is defined to include families at 200 percent or more than the poverty threshold. See *supplemental note 1* for more information on poverty.

NOTE: The Current Population Survey (CPS) questions used to obtain educational attainment data were changed in 1992. In 1994, the survey instrument for the CPS was changed and weights were adjusted. Estimates are revised from previous editions. The data presented here represent the percentage of civilian, noninstitutionalized 16- to 19-year-olds who are neither enrolled in school nor working. See *supplemental note 2* for more information on the CPS and for an explanation of the “neither enrolled nor working” variable.

SOURCE: U.S. Department of Commerce, Census Bureau, Current Population Survey (CPS), March and Annual Social and Economic Supplement, selected years, 1986–2006.

Youth Neither in School nor Working

Table S19-1. Standard errors for the percentage of youth ages 16–19 who were neither enrolled in school nor working, by selected characteristics: Selected years, 1986–2006

Characteristic	1986	1988	1990	1992	1994	1996	1998	2000	2002	2003	2004	2005	2006
Total	0.57	0.56	0.38	0.41	0.38	0.41	0.36	0.36	0.38	0.39	0.35	0.37	0.36
Sex													
Male	0.76	0.72	0.50	0.53	0.50	0.54	0.50	0.46	0.53	0.55	0.49	0.52	0.49
Female	0.84	0.85	0.58	0.62	0.58	0.62	0.51	0.55	0.55	0.54	0.51	0.54	0.53
Age													
16–17	0.58	0.54	0.40	0.42	0.39	0.41	0.35	0.36	0.36	0.36	0.34	0.35	0.34
18–19	0.97	0.96	0.62	0.69	0.66	0.71	0.63	0.60	0.67	0.70	0.64	0.68	0.67
Education and age													
Less than high school diploma or equivalent													
16–17	0.57	0.53	0.40	0.41	0.38	0.41	0.35	0.35	0.35	0.34	0.33	0.34	0.33
18–19	1.80	1.74	1.11	1.19	1.13	1.14	1.07	0.95	1.06	1.09	1.03	1.09	1.04
High school diploma or equivalent													
16–17	7.75	7.26	5.39	6.23	5.21	5.99	3.90	5.37	4.40	5.84	4.78	4.19	4.87
18–19	1.11	1.11	0.71	0.83	0.79	0.88	0.75	0.78	0.85	0.92	0.81	0.86	0.87
Race/ethnicity													
White	0.61	0.59	0.42	0.44	0.42	0.45	0.39	0.37	0.43	0.43	0.40	0.42	0.41
Black	1.87	1.87	1.14	1.34	1.20	1.28	1.07	1.20	1.26	1.33	1.10	1.22	1.20
Hispanic	2.45	2.52	1.65	1.56	1.41	1.45	1.30	1.25	1.19	1.22	1.14	1.20	1.09
Asian	†	†	†	†	†	†	†	†	†	1.27	1.33	1.51	1.69
Citizenship													
U.S.-born	†	†	†	†	0.39	0.42	0.36	0.36	0.39	0.40	0.36	0.38	0.37
Naturalized U.S. citizen	†	†	†	†	6.62	2.78	5.03	3.53	3.24	4.52	3.22	2.98	3.83
Non-U.S. citizen	†	†	†	†	2.41	2.42	2.51	2.13	2.20	2.35	2.15	2.25	2.37
Poverty													
Poor	1.84	2.01	1.37	1.40	1.25	1.37	1.20	1.24	1.42	1.40	1.28	1.33	1.30
Near-poor	1.48	1.53	1.07	1.02	0.97	0.97	1.04	1.00	1.02	1.05	0.93	0.98	0.94
Nonpoor	0.53	0.51	0.36	0.37	0.34	0.40	0.34	0.34	0.37	0.38	0.35	0.36	0.36

† Not applicable.

SOURCE: U.S. Department of Commerce, Census Bureau, Current Population Survey (CPS), "Annual Social and Economic Supplement," selected years, 1986–2006.