





Revocation of Portions of PLO 5150

Map 6

Bureau of Land Management Glennallen Field Office

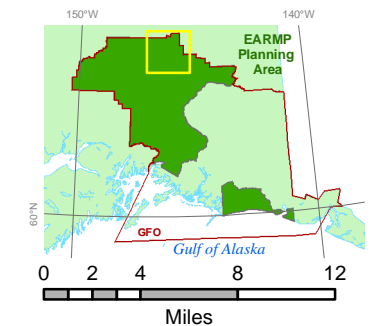


East Alaska Resource Management Plan

-  EARM Planning Area
-  Wild and Scenic River Corridor
-  Current Boundary of PLO 5150
-  Portion of PLO 5150 revoked under this RMP

The portion of PLO 5150 being revoked under this RMP would be available for conveyance to the State of Alaska. It would also make the land unavailable for subsistence hunting under the Federal system.

This map does not display the entire PLO 5150 boundary, only that portion affected by this RMP.



1:500,000 1 inch equals 8 miles

*Land status is only depicted inside the planning area.

Great care has been taken to ensure that the information represented is as accurate and complete as possible at the time of compilation. However, the information displayed on this map is intended to be used for graphic representation only. For official land status, refer to legal case-files and plats. data\RMP\Maps\RMP_Maps6_plo5150 June 2007

