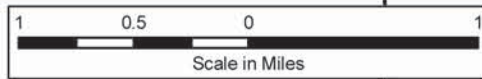


Smithville Lake



Missouri

2007



PARK AREAS	FACILITIES																				
	Picnic Area	Boat Ramp	Marina	Sailboat Facilities	Swimming	Campgrounds	Group Camp	Trails	Ball Fields	Electrical Hookups	Sewage Dump	Sewage Hookup	Water Supply	Showers	Restrooms	Laundry	Golf Course	Trap Range	Fishing Dock	Courtesy Dock	
Crow's Creek Park	•	•	•	•	•	•	•	•	•	•	•	•	•	•	•	•	•	•	•	•	•
Little Platte Park	•	•	•	•	•	•	•	•	•	•	•	•	•	•	•	•	•	•	•	•	•
Perkins Park	•	•	•	•	•	•	•	•	•	•	•	•	•	•	•	•	•	•	•	•	•
Smith's Fork Park	•	•	•	•	•	•	•	•	•	•	•	•	•	•	•	•	•	•	•	•	•
Litton Visitor Center	•	•	•	•	•	•	•	•	•	•	•	•	•	•	•	•	•	•	•	•	•
Camp Branch Marina	•	•	•	•	•	•	•	•	•	•	•	•	•	•	•	•	•	•	•	•	•
Camp Branch Camp Ground	•	•	•	•	•	•	•	•	•	•	•	•	•	•	•	•	•	•	•	•	•
Kelsey Short Group Camp	•	•	•	•	•	•	•	•	•	•	•	•	•	•	•	•	•	•	•	•	•
Sailboat Cove	•	•	•	•	•	•	•	•	•	•	•	•	•	•	•	•	•	•	•	•	•

* Handicap Accessible Facility Available

Emergency Numbers

Ambulance - St. Luke's Northland Hospital, Smithville Campus, Located 1/2 mile north of State Hwy. 92 on U.S. 169	911 or 816-532-3700
Clay County Sheriff	816-407-3700
Clinton County Sheriff	816-539-2156
Smithville Police	816-532-0500
Missouri Highway Patrol	816-532-0800
Corps of Engineers, Emergency Operations	816-389-3102
Missouri State Water Patrol (24 hours)	573-751-3333
Clay County Park Rangers	816-407-3400

Warning

Due to fluctuations in lake elevations, partially submerged and submerged hazards may be encountered. Boat operators should exercise extreme caution at all times while underway on the lake.

Notice

No Water Skiing North of Hwy. W Bridge or East of Camp Branch Bridge

Project Data

DAM	Type	Rolled earthfill
	Length, ft. (overall)	4,000
	Height, ft. (above streambed)	90
	Width, ft. (crown)	30
	Width, ft. (base)	940
	Volume of earthfill, cu. yd.	3,200,000
	Volume of concrete, cu. yd.	12,000
OUTLET	WORKS	
	Type	8 ft. x 9 ft. concrete box conduit for flood control
	Capacity, cu. ft. per sec.	3,490
	Length of conduit, ft.	664
LAKE	Elevation, ft. above mean sea level:	
	Flood control pool	876.2
	Multipurpose pool	864.2
	Storage, acre-feet:	
	Flood control pool	92,000
	Multipurpose pool	102,200
	Surface area, acres:	
	Flood control pool	10,000
	Multipurpose pool	7,190
	Shoreline (multipurpose) mi.	175
	Drainage area, sq. mi.	213
	Total project acreage	19,709

* One acre-ft. of water equals one acre of water one foot deep, or 325,851 gallons.

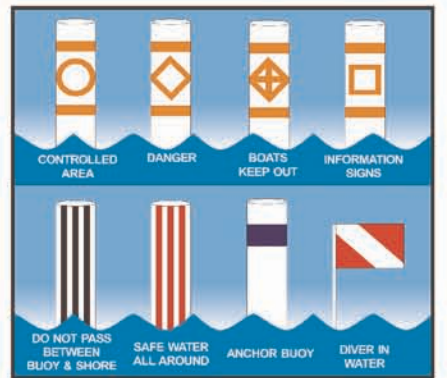
Note

Clay County Parks Office and Water Patrol are located at Camp Branch Marina.

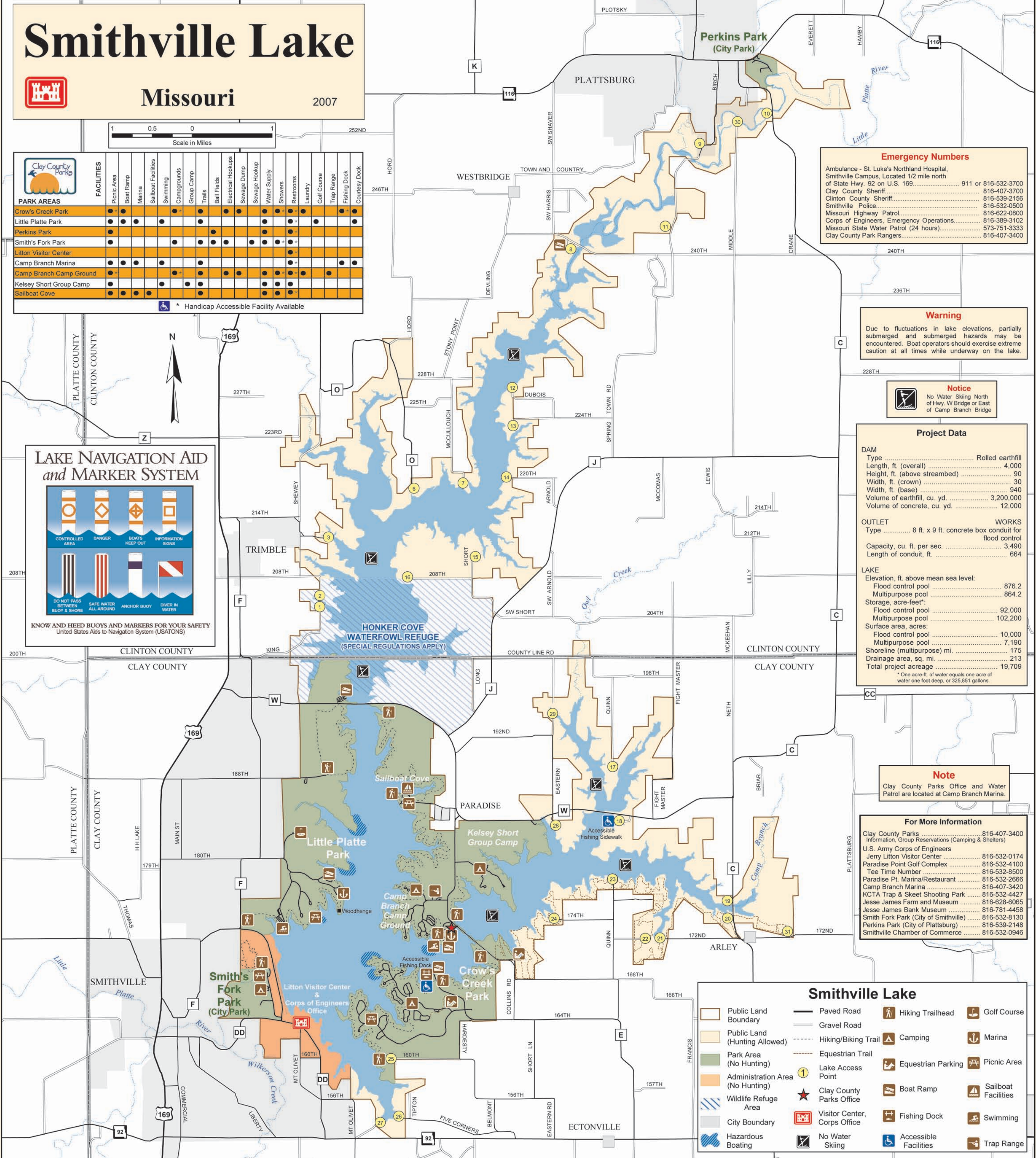
For More Information

Clay County Parks	816-407-3400
Information, Group Reservations (Camping & Shelters)	
U.S. Army Corps of Engineers	
Jerry Litton Visitor Center	816-532-0174
Paradise Point Golf Complex	816-532-4100
Tee Time Number	816-532-8500
Paradise Pt. Marina/Restaurant	816-532-2666
Camp Branch Marina	816-407-3420
KCTA Trap & Skeet Shooting Park	816-532-4427
Jesse James Farm and Museum	816-628-6065
Jesse James Bank Museum	816-781-4458
Smith Fork Park (City of Smithville)	816-532-8130
Perkins Park (City of Plattsburg)	816-539-2148
Smithville Chamber of Commerce	816-532-0946

LAKE NAVIGATION AID and MARKER SYSTEM



KNOW AND HEED BUOYS AND MARKERS FOR YOUR SAFETY
United States Aids to Navigation System (USATONS)



Smithville Lake

Public Land Boundary	Paved Road	Hiking Trailhead	Golf Course
Public Land (Hunting Allowed)	Gravel Road	Camping	Marina
Park Area (No Hunting)	Hiking/Biking Trail	Equestrian Parking	Picnic Area
Administration Area (No Hunting)	Equestrian Trail	Boat Ramp	Sailboat Facilities
Wildlife Refuge Area	Lake Access Point	Fishing Dock	Swimming
City Boundary	Clay County Parks Office	Accessible Facilities	Trap Range
Hazardous Boating	Visitor Center, Corps Office		
	No Water Skiing		