

Sign Me Up!

How to Register for Programs/Rentals:

Call 267-1247 with the following information:

- Organization name
- Contact person for confirmation materials
- Address, phone, and fax number
- Program choice or ideas, dates, and times
- Grade and number of participants
- Name of teacher(s)

Program Fees:

Half-day program (up to 3 hours): \$8/student

Full day program (up to 6 hours): \$16/student

Teachers and chaperones are free.

Deposit:

To confirm your reservation, a \$50 deposit is required at least two weeks prior to the program.

Payment Instructions:

Send deposit to BLM/CCSC, 6865 Abbott Loop Road, Anchorage, AK 99507.

Balance is due on the day of the program. Please pay with credit card or one check made payable to DOI/BLM.

Preparing for Your Field Trip:

- Our programs take place primarily in the outdoors! Students must be dressed appropriately to participate.
- Groups are responsible for providing one chaperone per 15 students. This ratio is required for the safety of program participants.
- A "Killy Cart" is available for participants with mobility impairments.
- Handicapped parking is available next to the building.

To learn more about educational opportunities:

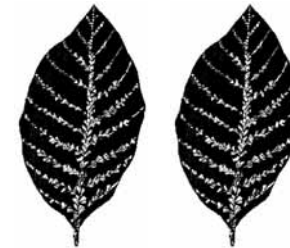
- Schedule a slideshow at your teacher, PTA, or community group meeting to learn more about educational opportunities at the Science Center.

Campbell Creek Science Center
6865 Abbott Loop Road, Anchorage, AK 99507 (907)267-1247
www.blm.gov/ak/sciencecenter

BLM/AK/GI-03/021+8367+040



Campbell Creek Science Center



Programs and Opportunities for the Community



Take it Outside!

Get ready to walk on the wild side by planning a visit to the BLM Campbell Creek Science Center!



Located in the heart of Anchorage, the Science Center provides educational opportunities for adults, children, and families, as well as meeting space for various groups. The Center offers students of all ages the opportunity to learn in the outdoor classroom. Visitors have access to creeks, forests, meadows, and a rich abundance of plant and wildlife. Our programs promote awareness, understanding, stewardship, and an appreciation of the environment.

If you're working with school-age students, you can choose from our existing educational programs or let our staff design a custom program to meet the specific educational goals and interests of your group. Most of our school programs have been carefully designed to assist students in meeting National and Alaskan Science Standards. Our staff has been trained in inclusive education techniques. Adaptive equipment is available.

Adult and family programming at the Science Center engages people in hands-on, interactive programs that inspire a sense of wonder and increase understanding of science.

Thinking about volunteering? Check out our volunteer opportunities and trail events and help make a difference.

If you are looking for a retreat-like setting for your next meeting, consider renting the Science Center. Rental groups now have the option of adding a teambuilding, snowshoeing, or other BLM instructor led activity.

The Campbell Creek Science Center has something for everyone. So take it outside and discover the wonders of the outdoor classroom!



Facility Rental Rates

Multipurpose Room (120, 80 w/tables)

M-F:	1/2 Day or Evening.....	\$270
	Full Day.....	\$540
Sa/Su:	1/2 Day or Evening.....	\$390
	Full Day.....	\$780

Classroom (40, 25 w/tables)

M-F:	1/2 Day or Evening.....	\$150
	Full Day.....	\$270
Sa/Su:	1/2 Day or Evening.....	\$270
	Full Day.....	\$510

Kitchen

M-F:	1/2 Day or Evening.....	\$100
	Full Day.....	\$150
Sa/Su:	1/2 Day or Evening.....	\$100
	Full Day.....	\$150

Entire Building

M-F:	1/2 Day or Evening.....	\$510
	Full Day.....	\$960
Sa/Su:	1/2 Day or Evening.....	\$720
	Full Day.....	\$1410



Facility Rentals

The Campbell Creek Science Center is located on 730 acres of public land known as the BLM Campbell Tract.



The 10,500 square foot facility houses a classroom, multipurpose room, and kitchen in a retreat-like setting surrounded by quiet forests, a rippling creek, and a network of multiple use trails in the heart of Anchorage.

The Science Center is available for rental by schools, non-profit, government, and commercial organizations for programs and events that focus on scientific and environmental topics, education, natural resources, outdoor recreation, and health and human services. Reservations are required and fees are charged to help defray operating costs. The Campbell Creek Science Center is available for full day, half day, evening, and weekend rentals.

Opportunities for Rental Groups

Ice Breakers

Let our staff "break the ice" at the beginning of your meeting or training. Participants will warm up to each other with these fun, energetic activities. Call to check on fees and instructor availability.

Meeting Energizers

Looking for an energetic break during your meeting or training? Give us a call to plan a short nature hike, snowshoe adventure, team-building activity, or other option, to meet your needs. Call to check on fees and instructor availability.

Vision

We are an Alaska outdoor science education center for people of all ages and encourage interest and participation in the balanced management of natural resources.

Mission

Our mission is to promote:

- discovery and learning experiences that increase awareness, understanding, and appreciation for nature;
- use of the best science for the management of Alaska's natural resources; and
- behaviors, practices, and lifestyles that minimize impact on the environment.

Table of Contents

Programs for School-Age Kids.....	3
Custom-Designed School Programs.....	10
Scout Programs.....	11
Team-Building Programs.....	12
Adult and Family Programs.....	13
Volunteer Opportunities.....	15
Interpretive Naturalist Certification Program of Alaska.....	16
Facility Rentals.....	17
To Register.....	19



BLM Mission

The mission of the Bureau of Land Management is to sustain healthy, productive, and naturally diverse ecological systems for the use and enjoyment of present and future generations.



Programs for School-Age Kids

Whether you're a classroom teacher, a youth group leader, a scout leader, or a home school teacher, the Science Center has a program for you. We provide the complete educational package: the setting, the activities, and the staff. We specialize in custom-designed programs, highly interactive standards-based programs, and team-building activities.

Our science education programs provide innovative environment-based education for students of all ages. Environment-based education increases student achievement in science, mathematics, and reading and improves student motivation, lifelong learning skills, career preparation, and attitudes of respect and responsibility.

Please take a look through these pages, then call us at (907) 267-1247 to plan your educational adventure. A nominal fee is charged to help defray program costs. See back page for details. If you would like to learn more, schedule a free slideshow for your next meeting.

Kindergarten

Sensational Senses

Venture into the great outdoors! Explore the natural environment while using the senses of sight, smell, touch, and hearing through hands-on activities, games, and song. Students use simple tools, such as hand lenses, thermometers, and binoculars, which amplify their senses and allow them to collect information just like scientists do.

Fossil Finders

Children dress up as dinosaurs and learn about special features that helped the ancient reptiles get around, defend themselves, and eat different foods. Junior paleontologists make fossil imprints and go on a mini-excavation. Throughout the day, children embark on a dinosaur safari and a tracking expedition of Alaska's animals.

Natural Inventories & Monitoring

Learn more about ecosystems, ecosystem functions, and scientific methods by assisting in our natural inventories and ecosystem monitoring programs.

Each year volunteers help us conduct:

- Fall Bird Banding
- Water Quality Monitoring
- Invasive and Native Plant Surveys
- Stream Bioassessments



We also maintain an herbarium, insect collection, and lichen collection, which are curated and catalogued according to museum protocols. Volunteers help us collect, preserve, identify, and catalog specimens for these collections which are available for in-house study by students, researchers, and other members of the public.

Interpretive Naturalist Certification Program of Alaska

INCPA is a cooperative venture between local organizations to train citizens to become better naturalists, interpreters, environmental educators, and non-formal science teachers.

The goals of the program are to:

- Help to develop a corps of community educators trained to a rigorous standard in Alaska natural history, interpretive techniques, non-formal science education, and environmental education.
- Link trained participants to volunteer and employment opportunities to meet the specific needs within the Anchorage community.
- Pool community training resources for non-formal science and environmental education into a comprehensive, coordinated program.
- Promote science and environmental education in the Anchorage community and foster a sense of stewardship in the audiences served.

Volunteer Opportunities

Whether you'd like to work with kids, help maintain trails, or conduct surveys, there's an opportunity for you to volunteer at the Campbell Creek Science Center. We can use the help of individuals, groups, and Scouts for special events, projects, and long-term efforts. Internships are available for high school and university students. To learn more, stop by the Science Center and look through our current Volunteer Opportunities notebook. You can also find a listing of all the volunteer opportunities by clicking on Alaska at www.volunteer.gov, or call us at (907)267-1247.

Educational Programs

Assist in our educational efforts by becoming a volunteer instructor or assistant instructor. Volunteers also help us maintain and prepare educational props and do outreach programs at area schools to prepare students for visits to the Science Center.



Outdoor Recreation

There are 12 miles of non-motorized recreational trails on Campbell Tract, all of which are maintained by the Science Center staff and its volunteers. Volunteers help maintain and improve trails, monitor trail conditions throughout the year, and organize special work events.

Special Volunteer Events

May: Scoop the Poop, a spring trail cleaning event.
June: National Trails Day, an annual trail building and maintenance event.
September: National Public Lands Day and Science Center Open House, an annual trail and work project event with educational activities for the whole family.

First Grade

Beetles, Butterflies, and Bugs

Get up close and personal with insects and other crawlies creatures. Young entomologists use nets to capture insects and magnifiers to observe them in the field. Students try out different insect mouth parts, act out insect behaviors, and use their creative energies to build a Mini Beast.



Alaska's Animals

Fur and feathers and fat, oh my! Games, hands-on activities, and animal displays immerse children in the world of Alaska animal adaptations and evidence. Students investigate animal characteristics and solve an animal tracking mystery while learning about special features that allow animals to survive in Alaska.

Discover the wonder in your own backyard!

Second Grade

Nature's Plants, Trees, and Seeds

Explore the world of plants from seeds to trees and everything in-between through build-a-tree, traveling seeds, and other engaging activities. Go on a seed discovery hike, conduct seed dispersal experiments, and learn about basic plant parts and plant needs. Students are also introduced to basic plant, twig, and tree identification.



Salmon Stories

What makes a fish a fish? Explore fish characteristics as well as those unique to salmon. Children follow the life cycle of a salmon from egg to spawning adult. They recreate the salmon's journey from fresh water to the sea and back again. Active games and puzzles engage students as they learn about the changes in form and habitat that take place over the fascinating life of a salmon.

Super Soils: The Land Down Under

Treat your students to a day in the dirt! Investigate soil science through experiments, hands-on activities, and creative exercises. Learn about soil properties and its components. Find out how organic and inorganic materials contribute to different soils, how much water different soils can hold, and the effects of plants on erosion and composition.

Winter Trails Day

Come try out free demo snowshoes, classical skis, and skate skis; tour the snow shelter "parade of homes;" take the Geocache challenge; enjoy hot cocoa, marshmallows, and a roaring fire; visit a variety of educational booths; and more! Winter Trails Day is an annual event designed to promote responsible, non-motorized winter sports and outdoor safety on our public lands. Held each February, the event also helps connect new trail users with the various recreation groups in Anchorage.

Early-Morning Bird Walks

Join us early on May mornings for spring bird walks. You'll develop and fine tune your birding skills and witness the progression of songbird migration through the Campbell Tract. Sponsored jointly by BLM and the Anchorage Audubon Society, these walks are led by knowledgeable bird experts. Walks are free. Binoculars may be checked out upon request.

Educational Workshops

Want to improve your skills as a naturalist or educator? Want to better understand ecology, biology, and other sciences? Our adult educational workshops help participants do this and more. Program fees apply to most workshops.

Natural Resource Forums

Designed to help people better understand natural resource management issues and the science and policy behind these issues. Programs are free and open to the public.

For current topics and upcoming programs, please see our website at:
www.blm.gov/ak/sciencecenter

Adult and Family Programs

Fireside Chats

Our evening slide show series occur on the third Wednesday of each month and run from October through May. Professionals discuss their research on everything from the giant Pacific octopus to prehistoric hunting techniques, and from the Bering glacier to bird songs and calls. These family-friendly programs are free and open to the public.

A Midsummer Night's Science Series

Our summer science series occur on Wednesday nights from June through August. Professionals teach participants about natural resource management techniques and methods through hands-on activities. These family-friendly programs are free and open to the public.



Science-in-a-Backpack

Discover for yourself the wonders of the natural world using educational packs designed to introduce basic field techniques. Explore the health and inhabitants of Campbell Creek using the Water Quality Pack. Search for and investigate insects and their relatives with the Invertebrate Pack. The backpacks are self-instructive, require no prior experience, and are available to use free of charge.

Third Grade

Forest Detectives

Students solve forest mysteries and learn about food chains, predator/prey relationships, and habitats. Through games and forest exploration, students learn how living and non-living parts of an ecosystem are connected.

Snow Sleuths

Students investigate the physical properties of snow by observing crystals, measuring snow temperatures, and conducting experiments in a snow shelter. In addition, skits and art projects help students discover how animals adapt to the winter environment.



Fourth Grade

Dynamic Earth

Hands-on activities engage young minds and demonstrate earth science concepts. Students learn how to identify minerals and investigate plate tectonics, glaciers, and geologic time. Students gold pan in a demonstration sluice box, and learn the importance of land reclamation.

Creature Feature

Why do animals look the way they do? Through a variety of experiments and dramatic demonstrations students become familiar with the concept of adaptations. Students use craft materials to design an arctic critter and explain how it is adapted to live in an arctic ecosystem.

Project WET

This water education festival is held every September on the banks of Campbell Creek. Students learn how to determine creek health, build an aquatic insect, and live responsibly in their watershed.

Fourth Grade & Up

Fire in Alaska

Through a variety of creative investigations students explore the role of wildfire in Alaska. For a half-day program, choose the Ecosystems Focus to learn about the fire triangle, succession, and fire behavior in different ecosystems under a variety of conditions. Or choose the Fire Wise Focus to learn ways to prevent wildfire and protect homes from escaped wildfire. The full-day Fire in Alaska program includes both components.

Team-Builders Adventure

Here's a great way to teach students the fundamentals of working effectively as a team. Experiential activities are designed to get students moving, cooperating, communicating, trusting, and problem-solving in positive ways. This is a great way to jumpstart the school year or build camaraderie throughout the year.



Winter Survival and Outdoor Skills

How can you survive in the sub-arctic environment of Alaska? Students learn about winter survival skills such as signaling to be found, assembling a survival kit, fire building, and digging a snow cave for shelter. Students also learn how to recognize and prevent hypothermia. At the end of the day, students practice their new skills in a survival scenario.

Alaska Bird Academy

This cooperative venture between the Alaska Audubon Society and the BLM Campbell Creek Science Center teaches students about birds and the important role that birds play in ecosystems. Students observe birds in the field and learn to identify birds by sight and sound. Students also discover unique bird adaptations and gain an understanding of ways that people can help birds.

Team-Building Programs Challenge Course

This experiential education program is a powerful and fun learning tool that can increase teamwork skills and participant self-confidence. Through a progression of fun, group-building activities participants practice and develop the skills of cooperation, communication, problem-solving, group support, and trust. The challenge course is best scheduled for the fall, spring, or summer, with a modified program offered in the winter. Program fees apply. Please see back cover for details.

The Challenge Course Is Ideal For:

- Scout and Youth Groups
- Teacher Training
- 6th Grade Students
- Middle and High School Students
- Staff Development
- Group-Building Experiences

Opportunities for Rental Groups

Ice Breakers

Let our staff "break the ice" at the beginning of your meeting or training. Participants will warm up to each other with these fun, energetic activities. Call to check on fees and instructor availability.

Meeting Energizers

Looking for an energetic break during your meeting or training? Give us a call to plan a short nature hike, snowshoe adventure, team-building activity, or other activity, to meet your needs. Call to check on fees and instructor availability.

Scout Programs

Have fun in the outdoors while earning Scout badges! Take a look at the badge programs below & call us to plan an after-school, evening, or weekend adventure. Have other badge ideas? Give us a call and we can develop a custom program for you and your Scouts. Program fees apply. See back cover for details.

Brownie Try-Its

- Outdoor Adventurer
- Wildlife Watchers
- Eco-Explorer
- Plants
- Earth and Sky



Junior Girl Scouts

- Strategies for Outdoor Living
- Frosty Fun
- Finding Your Way
- Earth Connections
- Science Discovery
- Wildlife
- Your Outdoor Surroundings
- Outdoor Fun



Boy Scout Merit Badges

- Orienteering
- Nature
- Wilderness Survival
- Soil and Water Conservation
- Geology
- Bird Study

Fifth Grade & Up

Earth Ranger Academy

The ERA is designed to be the culminating life science experience for upper elementary students. The academy begins at school with pre-trip activities designed to sharpen observations skills and teach arctic safety. Students then spend three days at the Science Center learning about ecological principles, exploring the outdoors, and collecting and analyzing scientific data. Students complete the ERA experience back in school and at home by practicing and sharing what they've learned with friends and family.

Get Energized!

Discover what every Alaskan needs to know about energy through games, experiments, and discussions. Learn about transforming energy, generating and moving electricity, sources of energy, and energy consumption and conservation.

Creekside Curiosities

Explore ecosystem concepts and connections by investigating the aquatic habitats and riparian areas of Campbell Creek. Students familiarize themselves with the stream ecosystem through sensory awareness activities and demonstrations. In addition, students are introduced to the methods scientists use to collect and analyze ecological data.

Forest Naturalists

Students explore ecosystem processes such as energy transfer, matter cycling, and interconnections between living things and the environment. Students participate in sensory awareness activities and conceptual demonstrations within the natural forest ecosystem. In addition, students collect and analyze data through methods used by scientists.



Sixth Grade & Up

Avalanche Awareness

This full day, hands-on program is designed to introduce students to avalanche prevention, evaluation, and safety. Find out about the "fantastic four" factors that contribute to avalanches, measure slope angles using an inclinometer, and learn about terrain and different kinds of snow with the avalanche board. Students also conduct instability tests on the snow pack, and learn how to use an avalanche beacon. New skills are put to work during an avalanche rescue scenario on the "slopes" of Campbell Tract.



Challenge Course

This experiential education program is a powerful and fun learning tool that can increase teamwork skills and participant self-confidence. Through a progression of fun, group-building activities, participants practice and develop the skills of cooperation, communication, problem-solving, group support, and trust. This is a great way to jumpstart the school year or build camaraderie throughout the year.

Outdoor Week

An Alaska 6th Grade tradition! Each May, specialists from local agencies and organizations conduct this FREE one-day adventure with activities that explore forest ecology, insects, low-impact camping, geology, fly tying, gold panning, archaeology, water quality, and more.

Custom-Designed School Programs

Below is a listing of some of the topics that are part of our custom programming option. We can design either a half- or full-day program, combining topic areas if you choose. If you don't find exactly what you're looking for, call us and we'll design a program just for you and your students. Program fees apply. Please see back cover for details.

Tracking & Animal Evidence

Sensory Awareness

Arctic Survival

Bones & Skeletons

Creek Investigation

Bogs and Wetlands



Ecosystems

Entomology

Mammals

Geology

Botany

Snow Studies

Adaptations

Orienteering

Art of Nature

Snowshoeing

Energy

Fire Ecology

Call us to plan your educational adventure!
(907)267-1247