



Carrizo Plain National Monument

Legend

Land Ownership

- US Bureau of Land Management
- US Forest Service
- US Fish & Wildlife Service
- State Lands
- Private Lands
- No Shooting Zone
- Open Camping Area
- Carrizo Plain National Monument
- Wilderness Study Area
- San Andreas Fault
- County Maintained Roads
- Paved Roads
- Open Roads
- Administrative Use Only
- Closed to Vehicle Use
- Foot Trail
- Information Board



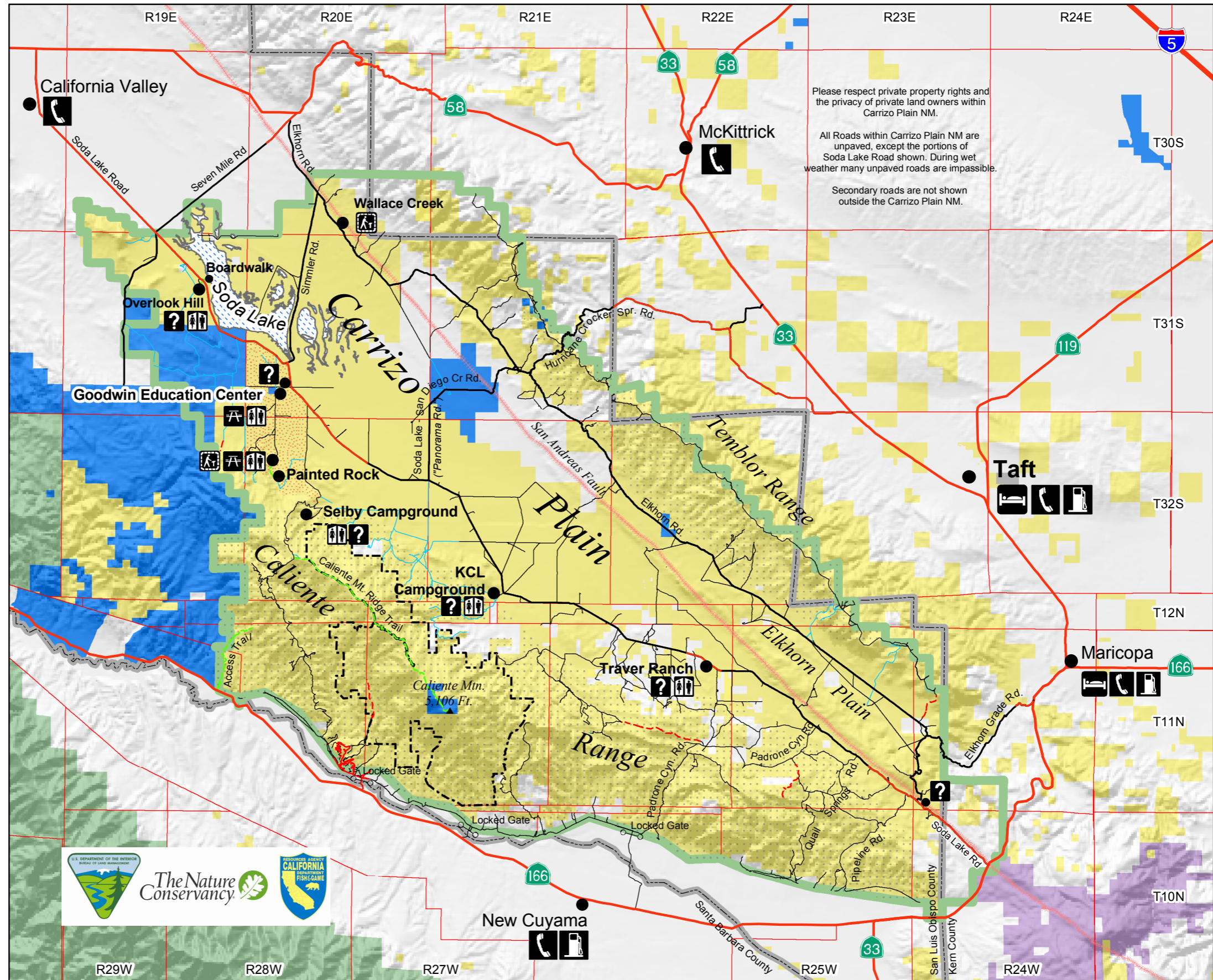
Location Map

Bureau of Land Management
 Bakersfield Field Office
 3801 Pegasus Dr., Bakersfield, CA 93308. 661-391-6000
www.ca.blm.gov/bakersfield

Goodwin Education Center
 (Open December - May: Phone 805-475-2131)



Revised: April 19, 2007



Please respect private property rights and the privacy of private land owners within Carrizo Plain NM.

All Roads within Carrizo Plain NM are unpaved, except the portions of Soda Lake Road shown. During wet weather many unpaved roads are impassible.

Secondary roads are not shown outside the Carrizo Plain NM.

