



# ***The Nationwide Health Information Network Initiative: Business Models***

**John Glaser, PhD  
Vice President and CIO  
Partners HealthCare**

**Senior Advisor  
Deloitte Center for Health Solutions**



# Nationwide Health Information Network Initiative

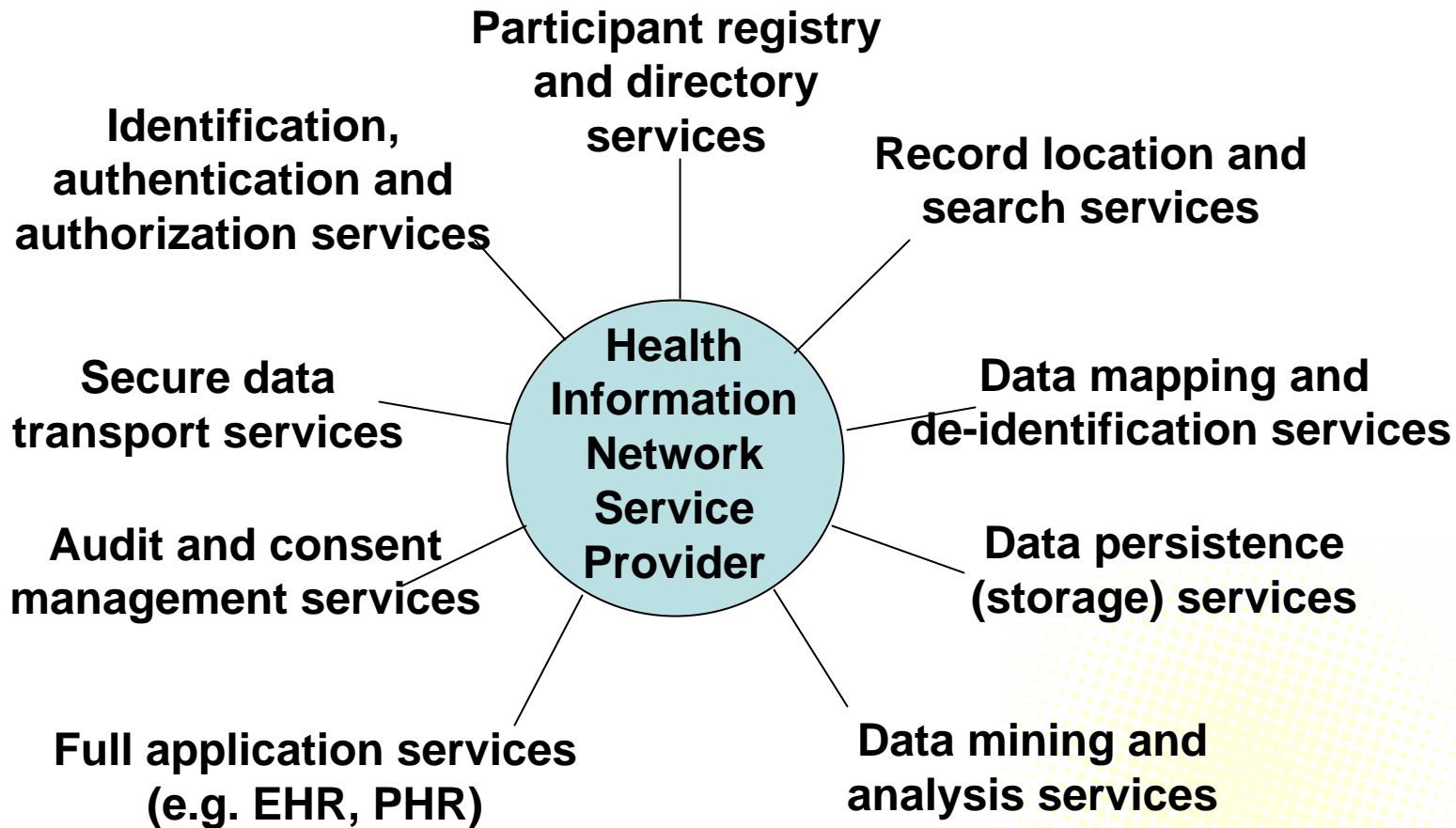
- ...foster widely available services that facilitate the accurate, appropriate, timely, and secure exchange of health information
- ...information that follows the consumer and supports clinical decision making

# Nationwide Health Information Network Initiative

## Shared assumptions:

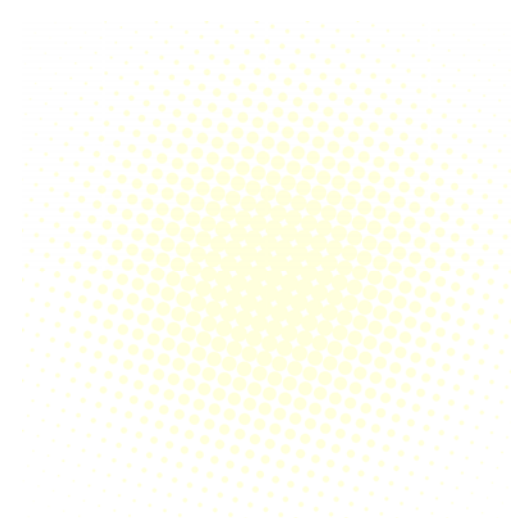
- Vision for the NHIN is a network of networks
- The organizations that provide network services may take several forms
- There are some basic network services necessary for connecting health records, security, record look-up and routing
- Many other network services may be considered valuable in local settings

# NHIN Services that Could Be Provided

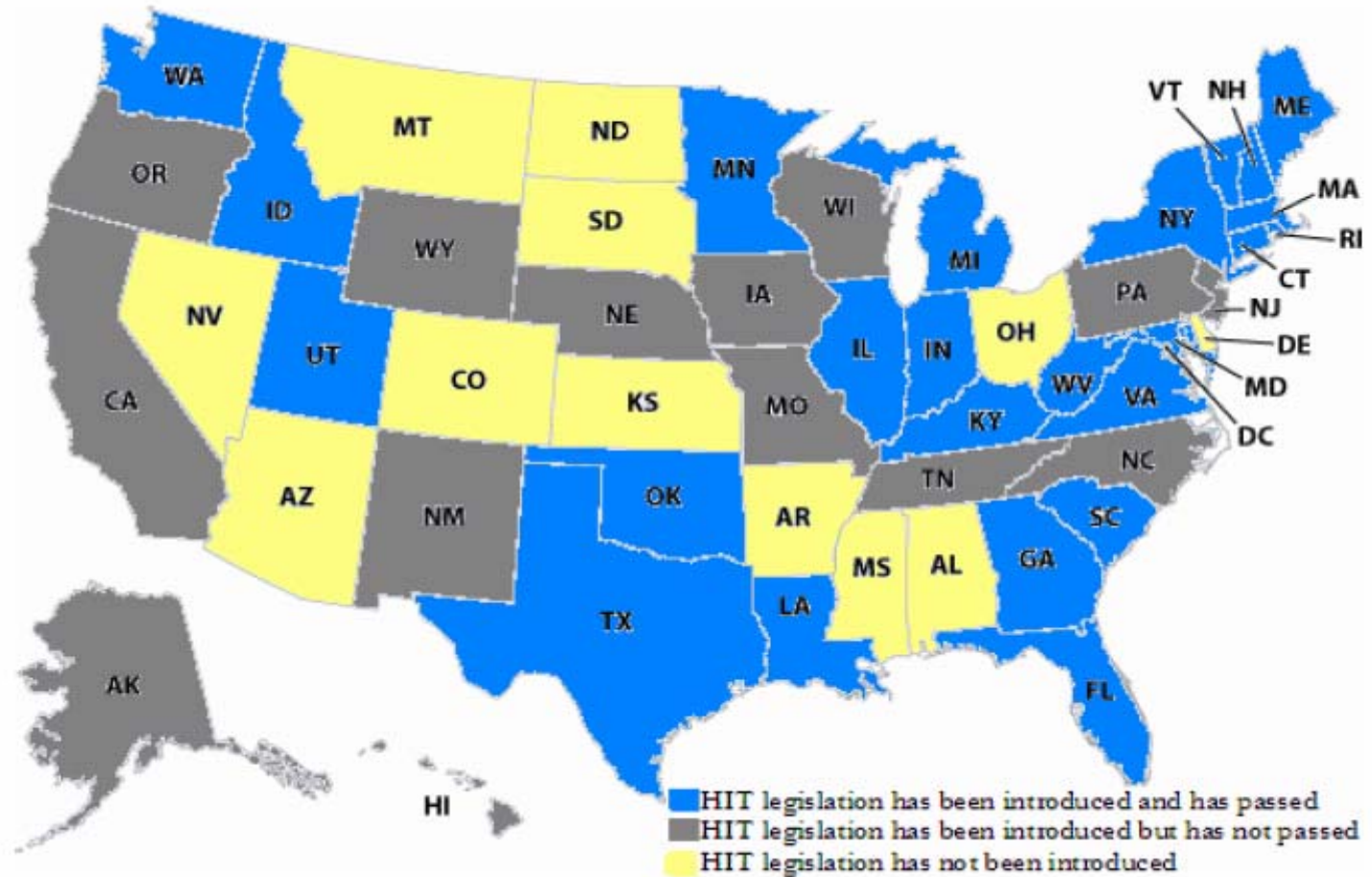


# Progress is Being made by the Federal Government

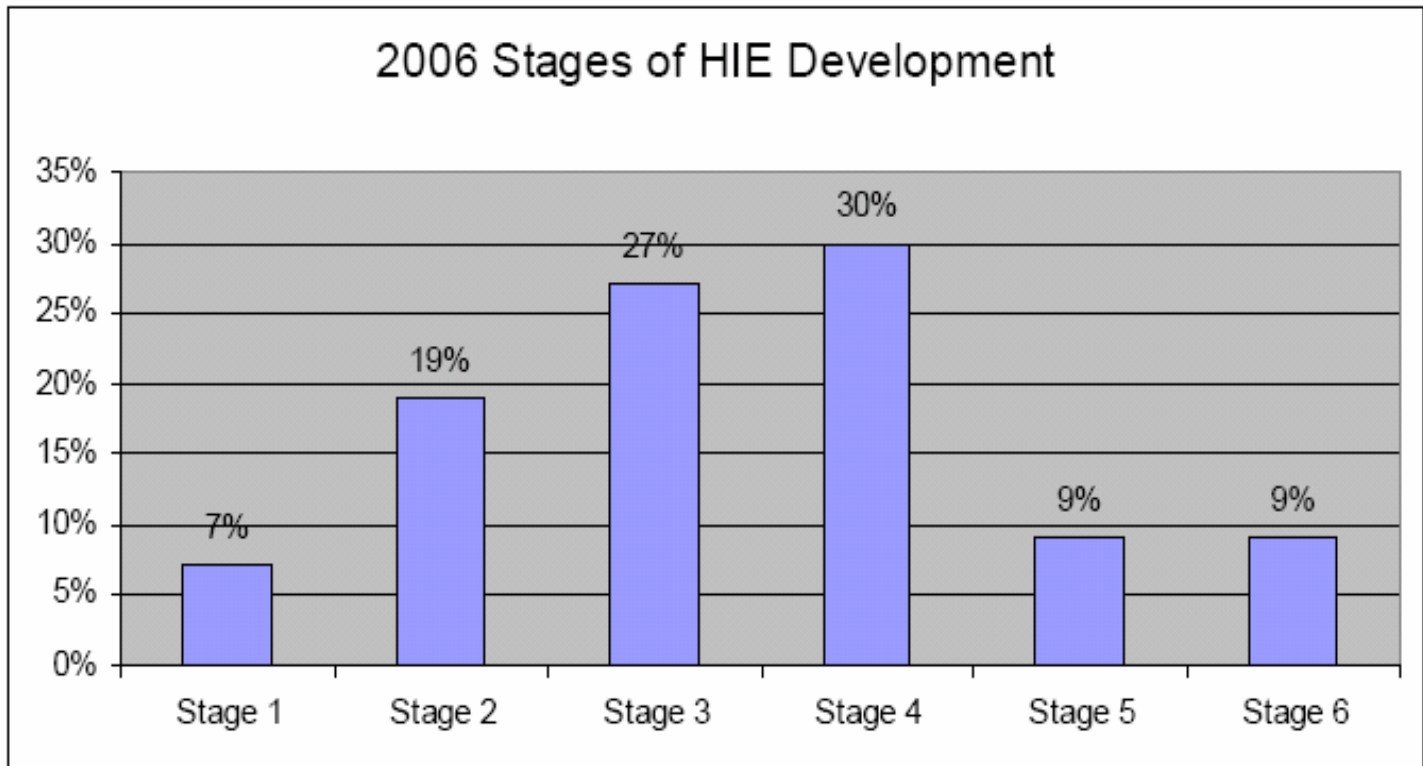
- AHIC and its Working Groups
- HITSP
- CCHIT
- HISPC
- NHIN Consortia



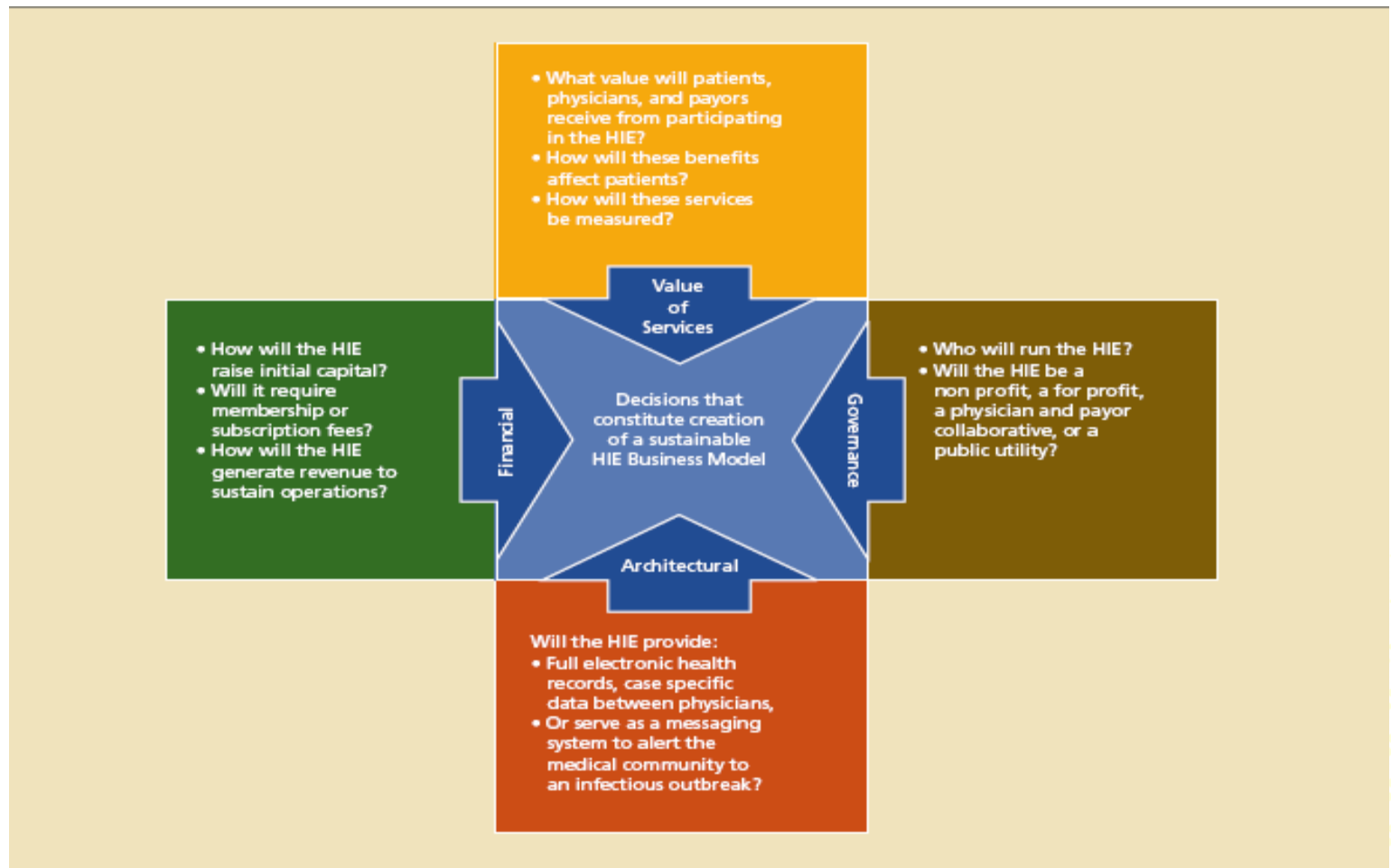
# Progress is Being Made by the States



# Progress is Being Made at the Local Level



# Achieving Exchange Financial Sustainability is Challenging





# NHIN Adoption has Several Pre-Conditions

- Financially viable participant networks and organizations
- Conformance of participant networks and organizations to necessary NHIN standards and policies
- Methods for addressing mis-aligned financial incentives and care improvement externalities
- Sufficient base of EHR adoption
- Broad adoption of standards
- Robust privacy and security policies and mechanisms
- Legal and policy approaches to anonymized, secondary uses of data

# Perspectives

U.S. DEPARTMENT OF HEALTH & HUMAN SERVICES  
NATIONAL INSTITUTE OF MEDICINE

- NHIN Consortia members
- States
- Regional efforts

