

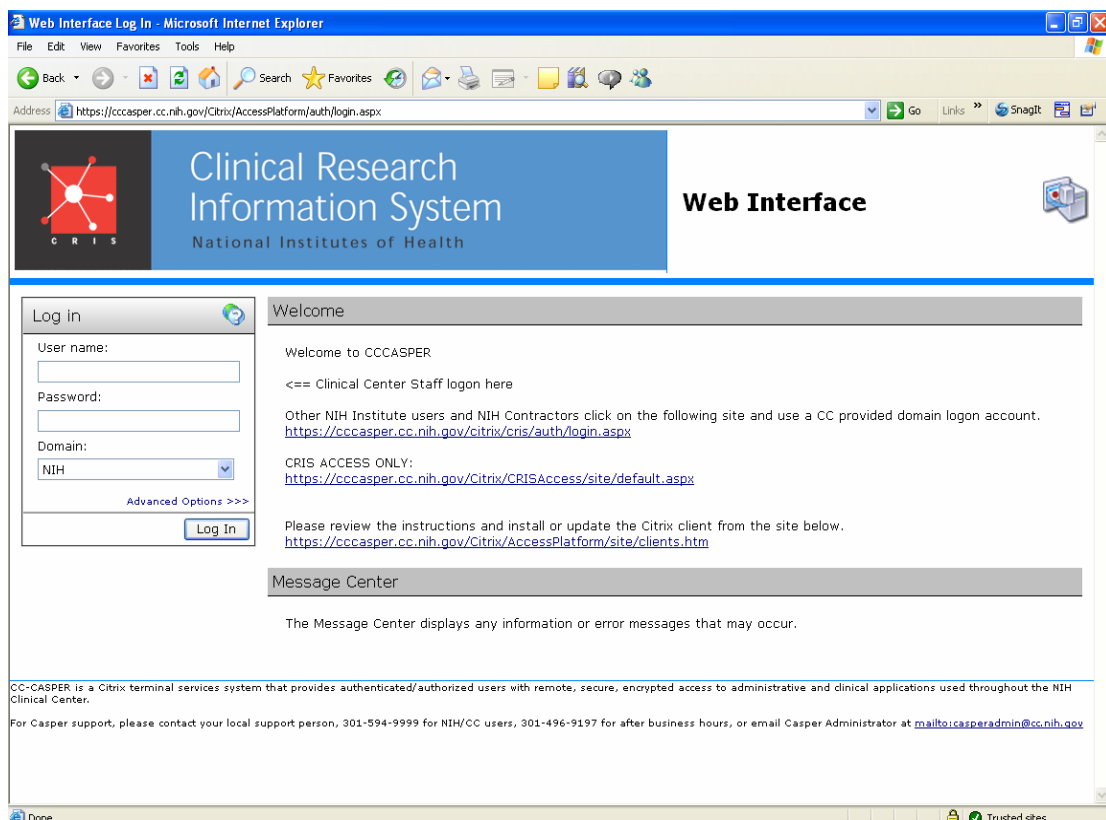
How To Log On to CRIS via CC Casper

Instructions

Log On to CC Casper

The way to access CRIS via CC Casper is as follows:

Step 1. Open your web browser and enter the following URL address: <https://cccasper.cc.nih.gov> to view the CC Casper logon screen where you will access CRIS



Log On to CRIS from CC Casper

Step 2. Click link below CRIS ACCESS ONLY


<https://cccasper.cc.nih.gov/Citrix/CRISAccess/site/default.aspx>

Web Interface Log In - Microsoft Internet Explorer

File Edit View Favorites Tools Help

Back Forward Stop Home Search Favorites Refresh Print Mail Stop

Address <https://cccasper.cc.nih.gov/Citrix/AccessPlatform/auth/login.aspx> Go Links SnagIt

 **Clinical Research Information System**
National Institutes of Health

Web Interface

Log in

User name:

Password:

Domain:
NIH

Advanced Options >>>

Log In

Welcome

Welcome to CCCASPER

<== Clinical Center Staff logon here

Other NIH Institute users and NIH Contractors click on the following site and use a CC provided domain logon account.
<https://cccasper.cc.nih.gov/citrix/cris/auth/login.aspx>

CRIS ACCESS ONLY:
<https://cccasper.cc.nih.gov/Citrix/CRISAccess/site/default.aspx>

Please review the instructions and install or update the Citrix client from the site below.
<https://cccasper.cc.nih.gov/Citrix/AccessPlatform/site/clients.htm>

Message Center

1. Click Link for CRIS ACCESS ONLY

CC-CASPER is a Citrix terminal services system that provides authenticated, authorized users with remote, secure, encrypted access to administrative and clinical applications used throughout the NIH Clinical Center.

For Casper support, please contact your local support person, 301-594-9999 for NIH/CC users, 301-496-9197 for after business hours, or email Casper Administrator at <mailto:casperadmin@cc.nih.gov>

Trusted sites

Log On to CRIS from CC Casper

The CRIS application available display on the left.

Step 3. Click the **CRIS-MAC (Apple Macintosh)** or **CRIS-PC (Microsoft Windows)** icon to launch the application that matches your workstation platform.

Citrix Access Platform - Microsoft Internet Explorer

File Edit View Favorites Tools Help

Address <https://cccasper.cc.nih.gov/Citrix/CRISAccess/site/default.aspx>

Clinical Research Information System
National Institutes of Health

Web Interface

Applications

Top Up

CRIS - Mac

CRIS - PC

Log Off

Welcome

Welcome to the Clinical Center's CRIS system.

<=== Click on the CRIS icon to the left and wait for the application start.

Then use your CRIS user name and password for signing on to CRIS.

For best performance with this web site please perform following steps:

1. In Internet Explorer, click the Tools button, and then click Internet Options.
2. Click the Security tab, and then click a security zone: Trusted sites
3. Click the Sites button.
4. Click Add. The site: <https://cccasper.cc.nih.gov>
5. When you are finished adding sites, click Close, and then click OK.

Some computers may need to update the Citrix client.
To install the client and other instructions click here: <https://cccasper.cc.nih.gov/Citrix/AccessPlatform/site/clients.htm>

Message Center

The Message Center displays any information or error messages that may occur.

*Note: This site is for CC employees. Other NIH Institute users click on the following site and use the CC provided domain logon account.
<http://cccasper.cc.nih.gov/citrix/cris/auth>

Log On to CRIS via CC Casper

- Step 4.** Click **OK** to accept the legal notice.
- Step 5.** Enter your **CRIS User name**.
- Step 6.** Enter your **CRIS Password**.
- Step 7.** Click **OK**.

Sunrise Clinical Manager Logon

Copyright © 2006, Eclipsys Technologies Corporation. All Rights Reserved.

Sunrise
Clinical Manager

ECLIPSYS

Extended Architecture

User:

Password:

SCMProd (SP4 - Rollup 1 - HF070608)

This is a US Government Computer System, which may be accessed and used only for authorized government business by authorized personnel. Unauthorized access or use of this computer system may subject violator to criminal, civil, or administration actions.

OK Exit Help

SCMPROD WorkGroup

You are now logged onto CRIS Production

Helpful Hints:

Internet Explorer Security Settings

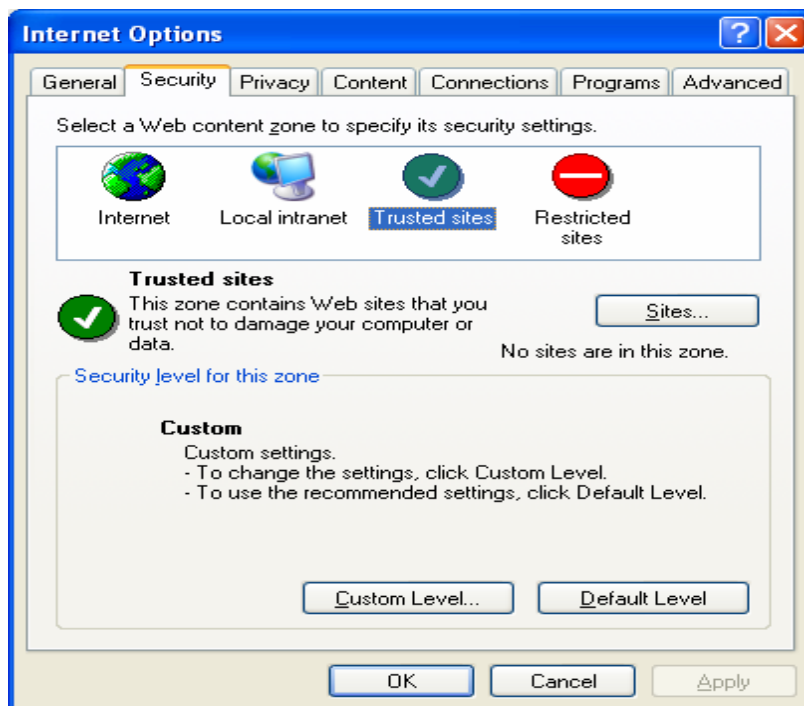
If the application does not launch, change your Internet Explorer Security Settings

Step 1. In Internet Explorer, click **Tools** and select **Internet Options**.

Step 2. Select **Security Tab**.

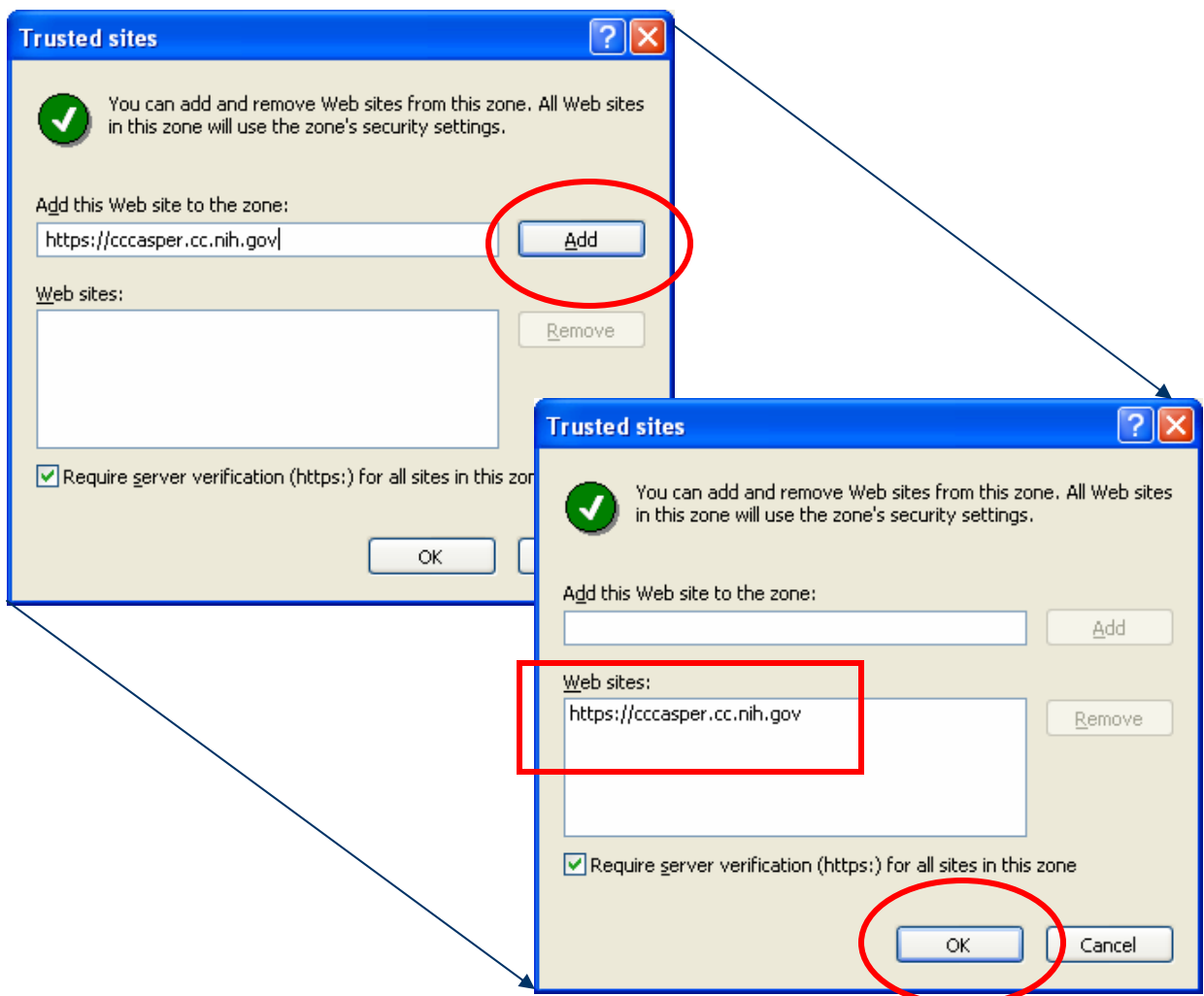
Step 3. Click **Trusted Sites**.

Step 4. Click the **Sites** button.



Helpful Hints: Internet Explorer Security Settings

Step 5. Type the CC Casper URL Address <https://cccasper.cc.nih.gov> to include it in the list of **trusted websites** for this zone and click **Add**. Then click **OK**.



Helpful Hints: Online Help

If you need help on customizing your view or to get more information, click the **Help** icon.

The screenshot shows a web browser window titled "Web Interface Log In - Microsoft Internet Explorer". The address bar displays the URL: <https://cccasper.cc.nih.gov/Citrix/AccessPlatform/auth/login.aspx>. The page header features the CRIS logo (a red square with a white network diagram) and the text "Clinical Research Information System National Institutes of Health". To the right, it says "Web Interface" with a small icon. The main content area is split into two columns. The left column is titled "Log in" and contains a "Help" icon circled in red, followed by input fields for "User name:", "Password:", and "Domain:" (set to "NIH"), and a "Log In" button. The right column is titled "Welcome" and contains the following text: "Welcome to CCCASPER", "<== Clinical Center Staff logon here", "Other NIH Institute users and NIH Contractors click on the following site and use a CC provided domain logon account.", a link to <https://cccasper.cc.nih.gov/citrix/cris/auth/login.aspx>, "CRIS ACCESS ONLY:", a link to <https://cccasper.cc.nih.gov/Citrix/CRISAccess/site/default.aspx>, and "Please review the instructions and install or update the Citrix client from the site below." with a link to <https://cccasper.cc.nih.gov/Citrix/AccessPlatform/site/clients.htm>. Below this is a "Message Center" section with the text "The Message Center displays any information or error messages that may occur." The browser's status bar at the bottom shows a lock icon and "Trusted sites".

Helpful Hints: Custom Settings

Once logged onto the CC Casper environment you can customize your view.

Step 1. Click the **Custom User Interface** icon.

Step 2. Select **Connection Preferences** to set your preferred window size, colors, and local printing.

The screenshot displays the Clinical Research Information System (CRIS) web interface. The top navigation bar includes the CRIS logo, the text "Clinical Research Information System National Institutes of Health", and a "Web Interface" button. Below this is a "Welcome" section with the text "Welcome to CCCASPER". A "Settings" menu is visible, containing an "Index" section with links to "Presentation Preferences" and "Connection Preferences". The "Connection Preferences" link is circled in red. A red circle also highlights the "Custom User Interface" icon in the "Applications" bar above the browser window. The browser window shows the URL "https://ccasper.cc.nih.gov/Citrix/AccessPlatform/site/default.aspx" and the "Settings" page content, including a "Message Center" with a warning icon and text about browser security restrictions.