

Invasive Species of Sea Squirt (Tunicates) found 160 miles off outer Cape Cod, MA

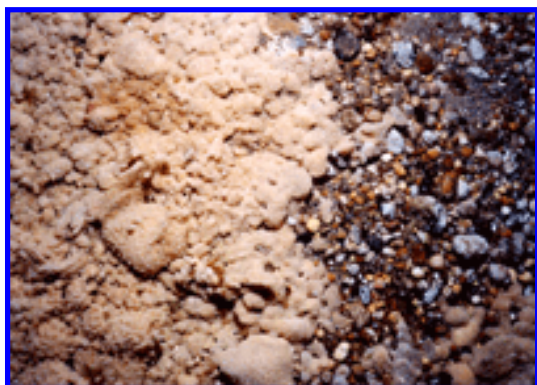


Image of tunicate colonies of the genus *Didemnum* (probably the species *D. vexillum*) advancing from left to right over pebble gravel habitat taken November 2003 on northern Georges Bank. Water depth was 41 meters or 135 feet. Select image for larger version (515KB).

Image of tunicate colony of the genus *Didemnum* encrusting a mussel shell taken November 2003 on northern Georges Bank. The long rope-like extensions possibly encrust organisms such as hydroids that commonly attach to shells. White bar is 2 centimeters (0.8 inches). Water depth was 45 meters or 148 feet. Select image for larger version (282KB).

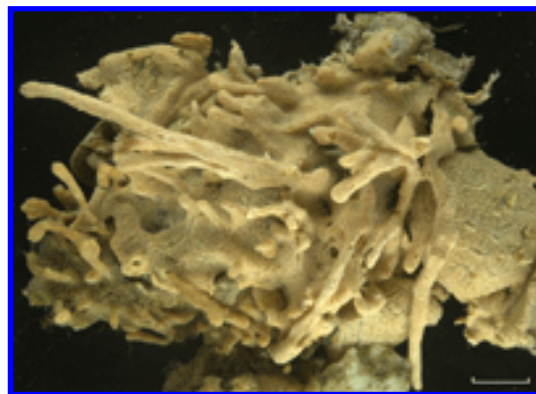
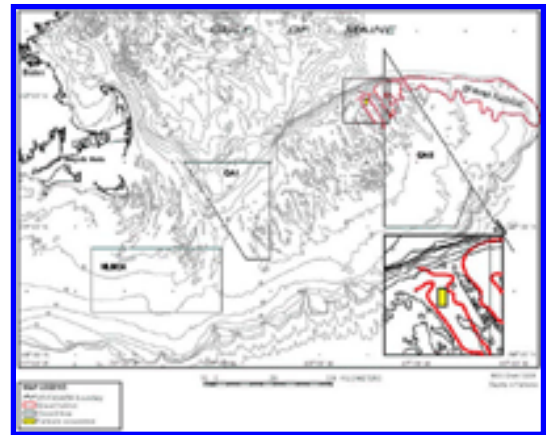




Image of tunicate colonies of the genus *Didemnum* (probably the species *D. vexillum*) encrusting a naturalist dredge sample of pebble gravel shown on deck the NOAA Ship Delaware II. The encrusted sea scallop is approximately five inches in diameter. Water depth was 47 meters or 154 feet. Select image for larger version (639 KB).

Image of Georges Bank map. Select image for larger version (79.3KB). (Image courtesy of NOAA.)



[Return to Newsroom -- News Leads, Feeds, and Story Seeds](#)

[Privacy Statement](#)

[Disclaimer](#)

[FOIA](#)

[Accessibility](#)

U.S. Department of the Interior, U.S. Geological Survey

URL <http://www.usgs.gov/features/marineinvasives.html>

[Contact Us](#)

Last modification: 02-Dec-2003@13:16

