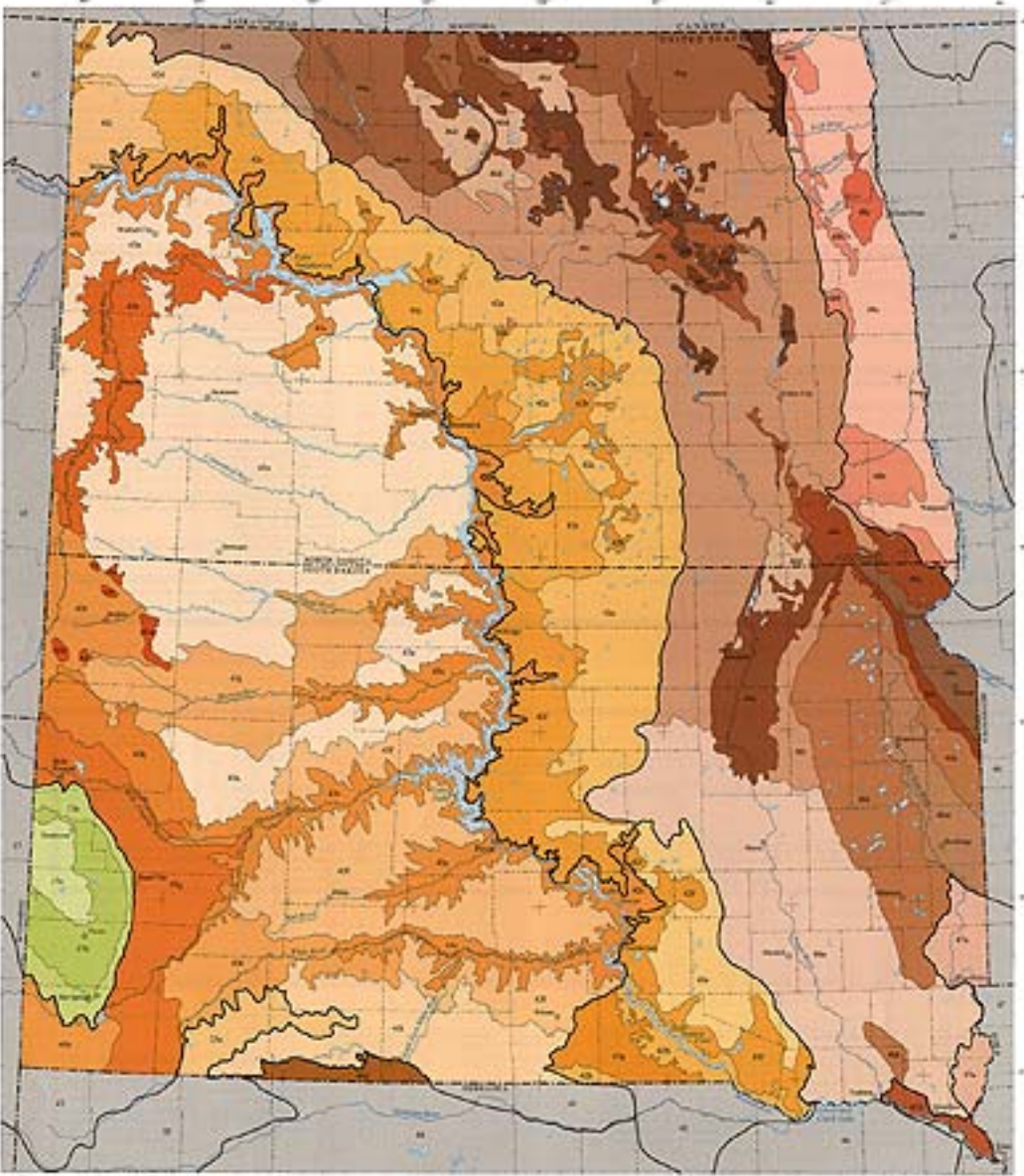


Ecoregions of North Dakota and South Dakota

Ecoregions are units of general similarity in vegetation and in the type, quality, and quantity of associated organisms. They are designated to serve as a useful basis for the research, assessment, management, and monitoring of natural resources. Ecoregions are directly applicable to the second and third levels of classification of biological systems. Ecoregions are also useful for the development of management plans, for monitoring resource quality, and for the analysis of integrated ecosystem management, as well as for the study of land use and resource management systems.

The approach used to compile this map is based on the general ecological systems approach developed by Whittaker (1960) and modified by Cowardin (1970). The approach used to compile this map is based on the general ecological systems approach developed by Whittaker (1960) and modified by Cowardin (1970). The approach used to compile this map is based on the general ecological systems approach developed by Whittaker (1960) and modified by Cowardin (1970).



- | | | | | | | | |
|--|---|--|---|--|--|--|--|
| <p>17 Middle Rockies</p> <ul style="list-style-type: none"> 17a Black Hills Foothills 17b Black Hills Plateau 17c Black Hills-Chey Highlands | <p>23 Western High Plains</p> <ul style="list-style-type: none"> 23a Pine Ridge Subregion | <p>42 Northwestern Glaciated Plains</p> <ul style="list-style-type: none"> 42a Missouri Coteau 42b Coteau des Prairie 42c Coteau des Prairie 42d Coteau des Prairie 42e Coteau des Prairie 42f Coteau des Prairie 42g Coteau des Prairie 42h Coteau des Prairie 42i Coteau des Prairie 42j Coteau des Prairie 42k Coteau des Prairie 42l Coteau des Prairie 42m Coteau des Prairie 42n Coteau des Prairie 42o Coteau des Prairie 42p Coteau des Prairie 42q Coteau des Prairie 42r Coteau des Prairie 42s Coteau des Prairie 42t Coteau des Prairie 42u Coteau des Prairie 42v Coteau des Prairie 42w Coteau des Prairie 42x Coteau des Prairie 42y Coteau des Prairie 42z Coteau des Prairie | <p>43 Northwestern Great Plains</p> <ul style="list-style-type: none"> 43a Missouri Coteau 43b Missouri Coteau 43c Missouri Coteau 43d Missouri Coteau 43e Missouri Coteau 43f Missouri Coteau 43g Missouri Coteau 43h Missouri Coteau 43i Missouri Coteau 43j Missouri Coteau 43k Missouri Coteau 43l Missouri Coteau 43m Missouri Coteau 43n Missouri Coteau 43o Missouri Coteau 43p Missouri Coteau 43q Missouri Coteau 43r Missouri Coteau 43s Missouri Coteau 43t Missouri Coteau 43u Missouri Coteau 43v Missouri Coteau 43w Missouri Coteau 43x Missouri Coteau 43y Missouri Coteau 43z Missouri Coteau | <p>44 Nebraska Sand Hills</p> <ul style="list-style-type: none"> 44a Nebraska Sand Hills | <p>45 Western Corn Belt Plains</p> <ul style="list-style-type: none"> 45a Western Corn Belt Plains | <p>46 Northern Glaciated Plains</p> <ul style="list-style-type: none"> 46a Northern Glaciated Plains | <p>47 Western Corn Belt Plains</p> <ul style="list-style-type: none"> 47a Western Corn Belt Plains |
|--|---|--|---|--|--|--|--|



17. Middle Rockies

The Middle Rockies ecoregion is characterized by individual basins of varying size, separated by high, rugged, green-painted. The Black Hills are an outlier of the Middle Rockies and more to the west. The Black Hills are an outlier of the Middle Rockies and more to the west. The Black Hills are an outlier of the Middle Rockies and more to the west.

23. Western High Plains

The Western High Plains ecoregion is a landscape of rolling grass and scattered shrubs. The terrain is generally flat to gently sloping. The terrain is generally flat to gently sloping. The terrain is generally flat to gently sloping.

42. Northwestern Glaciated Plains

The Northwestern Glaciated Plains ecoregion is a landscape of rolling grass and scattered shrubs. The terrain is generally flat to gently sloping. The terrain is generally flat to gently sloping. The terrain is generally flat to gently sloping.

43. Northwestern Great Plains

The Northwestern Great Plains ecoregion is a landscape of rolling grass and scattered shrubs. The terrain is generally flat to gently sloping. The terrain is generally flat to gently sloping. The terrain is generally flat to gently sloping.

46. Northern Glaciated Plains

The Northern Glaciated Plains ecoregion is a landscape of rolling grass and scattered shrubs. The terrain is generally flat to gently sloping. The terrain is generally flat to gently sloping. The terrain is generally flat to gently sloping.

47. Western Corn Belt Plains

The Western Corn Belt Plains ecoregion is a landscape of rolling grass and scattered shrubs. The terrain is generally flat to gently sloping. The terrain is generally flat to gently sloping. The terrain is generally flat to gently sloping.

48. Lake Agassiz Plain

The Lake Agassiz Plain ecoregion is a landscape of rolling grass and scattered shrubs. The terrain is generally flat to gently sloping. The terrain is generally flat to gently sloping. The terrain is generally flat to gently sloping.

44. Nebraska Sand Hills

The Nebraska Sand Hills ecoregion is the largest grass-covered dune region in the Western Hemisphere. The sand hills are composed of wind-blown sand dunes. The sand hills are composed of wind-blown sand dunes. The sand hills are composed of wind-blown sand dunes.

45. Western Corn Belt Plains

The Western Corn Belt Plains ecoregion is a landscape of rolling grass and scattered shrubs. The terrain is generally flat to gently sloping. The terrain is generally flat to gently sloping. The terrain is generally flat to gently sloping.

46. Northern Glaciated Plains

The Northern Glaciated Plains ecoregion is a landscape of rolling grass and scattered shrubs. The terrain is generally flat to gently sloping. The terrain is generally flat to gently sloping. The terrain is generally flat to gently sloping.

47. Western Corn Belt Plains

The Western Corn Belt Plains ecoregion is a landscape of rolling grass and scattered shrubs. The terrain is generally flat to gently sloping. The terrain is generally flat to gently sloping. The terrain is generally flat to gently sloping.

48. Lake Agassiz Plain

The Lake Agassiz Plain ecoregion is a landscape of rolling grass and scattered shrubs. The terrain is generally flat to gently sloping. The terrain is generally flat to gently sloping. The terrain is generally flat to gently sloping.

49. Lake Agassiz Plain

The Lake Agassiz Plain ecoregion is a landscape of rolling grass and scattered shrubs. The terrain is generally flat to gently sloping. The terrain is generally flat to gently sloping. The terrain is generally flat to gently sloping.

49. Lake Agassiz Plain

The Lake Agassiz Plain ecoregion is a landscape of rolling grass and scattered shrubs. The terrain is generally flat to gently sloping. The terrain is generally flat to gently sloping. The terrain is generally flat to gently sloping.

49. Lake Agassiz Plain

The Lake Agassiz Plain ecoregion is a landscape of rolling grass and scattered shrubs. The terrain is generally flat to gently sloping. The terrain is generally flat to gently sloping. The terrain is generally flat to gently sloping.

49. Lake Agassiz Plain

The Lake Agassiz Plain ecoregion is a landscape of rolling grass and scattered shrubs. The terrain is generally flat to gently sloping. The terrain is generally flat to gently sloping. The terrain is generally flat to gently sloping.

49. Lake Agassiz Plain

The Lake Agassiz Plain ecoregion is a landscape of rolling grass and scattered shrubs. The terrain is generally flat to gently sloping. The terrain is generally flat to gently sloping. The terrain is generally flat to gently sloping.

49. Lake Agassiz Plain

The Lake Agassiz Plain ecoregion is a landscape of rolling grass and scattered shrubs. The terrain is generally flat to gently sloping. The terrain is generally flat to gently sloping. The terrain is generally flat to gently sloping.

49. Lake Agassiz Plain

The Lake Agassiz Plain ecoregion is a landscape of rolling grass and scattered shrubs. The terrain is generally flat to gently sloping. The terrain is generally flat to gently sloping. The terrain is generally flat to gently sloping.