

**CORRELATION OF MAP UNITS**

**DESCRIPTION OF MAP UNITS**

**SYMBOLS**

**CONVERSION FACTORS**

**INTRODUCTION**

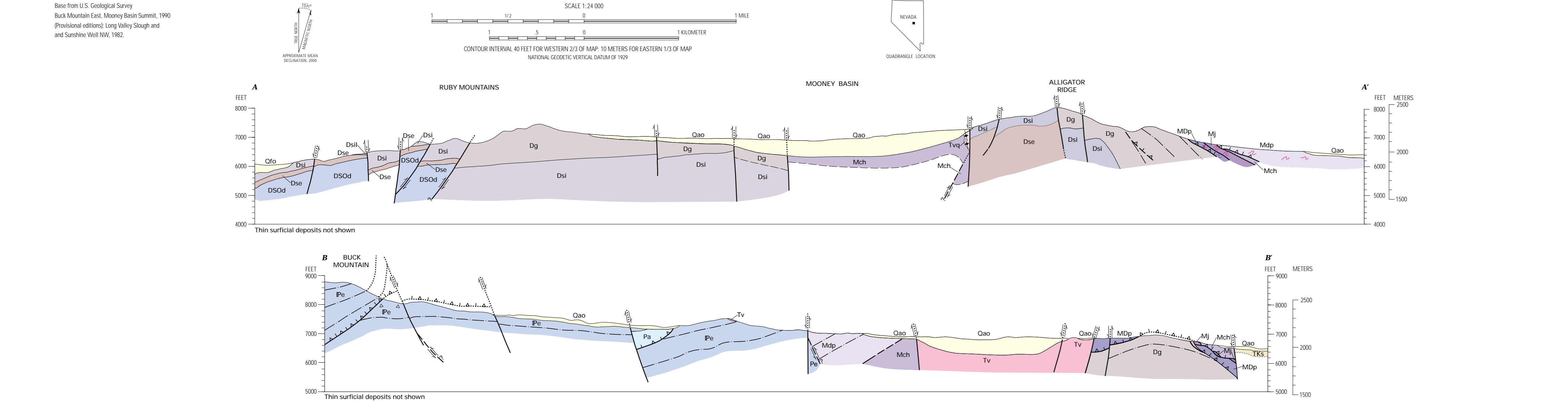
**GEOLOGIC SETTING**

**ACKNOWLEDGMENTS**

**REFERENCES**

**FIGURE 1. Regional geologic map of the Alligator Ridge area.**

**FIGURE 2. Index map showing the map area, geographic location in the vicinity of the map area, and the Alligator Ridge and Tropic mountain ranges.**



**GEOLOGIC MAP OF THE ALLIGATOR RIDGE AREA, INCLUDING THE BUCK MOUNTAIN EAST AND MOONEY BASIN SUMMIT QUADRANGLES, SUNSHINE WELL NE AND LONG VALLEY SLOUGH QUADRANGLES, WHITE PINE COUNTY, NEVADA**

By  
**Constance J. Nutt**  
2000

Map by U.S. Geological Survey  
Rock Mountain East, Mooney Basin Summit, Sunshine Well NE, and Long Valley Slough quadrangles, White Pine County, Nevada  
Scale 1:250,000

U.S. GEOLOGICAL SURVEY  
Geological Investigations Series I-2691  
9 5727-1002-5  
9 5727-1002-5