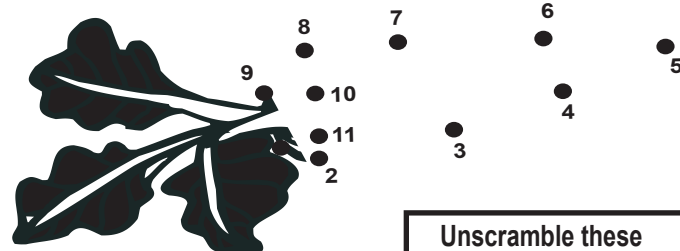
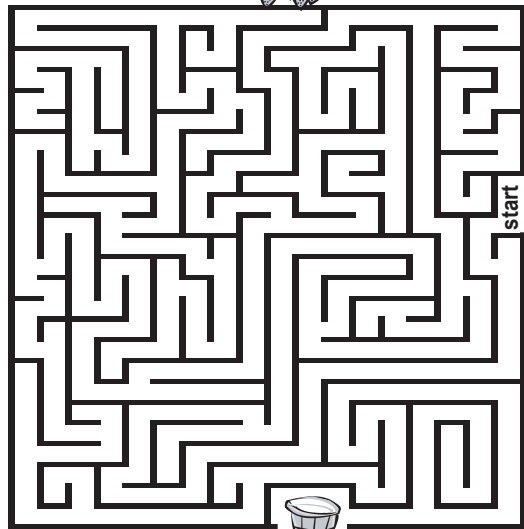


Help to put the  in the basket



Animal Match Game

Baby animals are often called by a different name. Can you match the baby name with the adult name?

- | | |
|------------|---------|
| pullet | skunk |
| pup | pig |
| kitten | turtle |
| fingerling | chicken |
| shoat | fish |
| kit | cat |
| hatchling | dog |

A: chicken, dog, cat, fish, pig, skunk, turtle

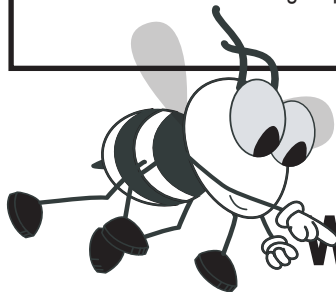
Unscramble these animal names

- | | |
|----------|------------|
| 1 igp | 7 ehspe |
| 2 aotg | 8 trorse |
| 3 ehn | 9 wco |
| 4 ohesr | 10 mue |
| 5 aaml | 11 kcdu |
| 6 ykture | 12 kccihne |

A: 1 pig 2 goat 3 hen
4 horse 5 llama 6 turkey
7 sheep 8 rooster 9 cow
10 emu 11 duck 12 chicken

Did You Know? State Ag Trivia

- ✓ Texas is the top producer of cattle and calves, cotton, sheep, wool, goats, mohair and horses.
- ✓ New York is the second leading producer of apples and maple syrup.
- ✓ California dominates the dairy industry and grows more than half of the country's fruits, nuts and vegetables.
- ✓ Mississippi is number one in aquaculture.
- ✓ More peanuts, pecans and poultry are grown in Georgia than in any other state.
- ✓ North Carolina ranks second in the production of hogs, turkeys and Christmas trees.
- ✓ Indiana is the second largest producer of ice cream.



www.fsa.usda.gov/fsakids

Play AgVenture and HayNow on line!



USDA is an equal opportunity provider and employer.

Farm Service Agency

FSA Kids



www.fsa.usda.gov/fsakids

What is red and goes up and down? A tomato in an elevator. How do you fix a cracked pumpkin? With a pumpkin patch! What did the hamburger name her daughter? Patty. How do you fix a broken tomato? Tomato paste. Why don't you tell secrets in a garden? The corn has ears! What happens when strawberries tell lies? They end up in a jam. What did the farmer call the cow that would not give him any milk? An udder failure. What do cows in Alaska give? Cold cream.

Test Your Food Knowledge

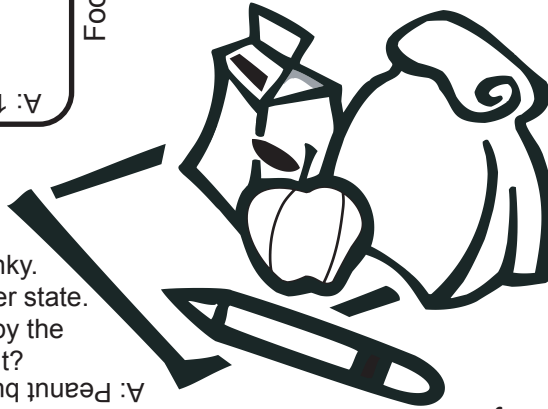
- New York's leading agricultural product is
a) milk b) peanuts c) lemons
- Which state produces the most sweet potatoes?
a) California b) Georgia c) North Carolina
- How many rows are in an ear of corn?
a) 5 b) 99 c) always an even number
- What is the main ingredient in the Hawaiian dish Poi?
a) taro b) banana c) potato
- How much corn is in a box of corn flakes?
a) 50% b) 19% c) 8%
- How many gallons of milk does the average American drink each year?
a) 10 b) 25 c) 40
- For every dollar you spend for produce at the supermarket, how much goes to the farmer who grew the produce?
a) 5 cents b) 10 cents c) 15 cents
- Pepperoni is America's favorite pizza topping. What is Japan's favorite pizza topping?
a) eggs b) pickled ginger c) squid
- Apricots have been cultivated for over 4,000 years and are believed to have originated in which country?
a) France b) Greece c) China
- Which state produces more eggs and more Swiss cheese than any other state?
a) New York b) Florida c) Ohio

A: 1a 2c 3c 4a 5c 6b 7a 8c 9c 10c

Guess What's In The Lunch Bag

This sandwich was first introduced at the St. Louis World's Fair in 1904. It is made from ground up legumes. It comes in two varieties, creamy and chunky. Georgia grows more of these legumes than any other state. The average American child will eat 1,500 of these by the time she or he graduates from high school. What is it?

A: Peanut butter sandwich.



Farm Word Search

YRHAADGOF AUKSSO
 NROZOAL IEASLNEC
 HLRTCXQXPNUIQPF
 ZEFECAPPLERMEAB
 EMWSBARDAFJACRE
 MOGHCWRAHNNOBGM
 TNGEWOATEEWOODA
 YOSEVFRRIPCECVE
 UWMPNPHNTSSHQFR
 LFFAOCBXASEGSJC
 ICETTKMLKETGGBB
 OKAXOOMWSAARVEP
 STJSSOOFEEZTUSYV
 OFZANFJHKDZZIFE
 CWEZZPWFMYUOXQW

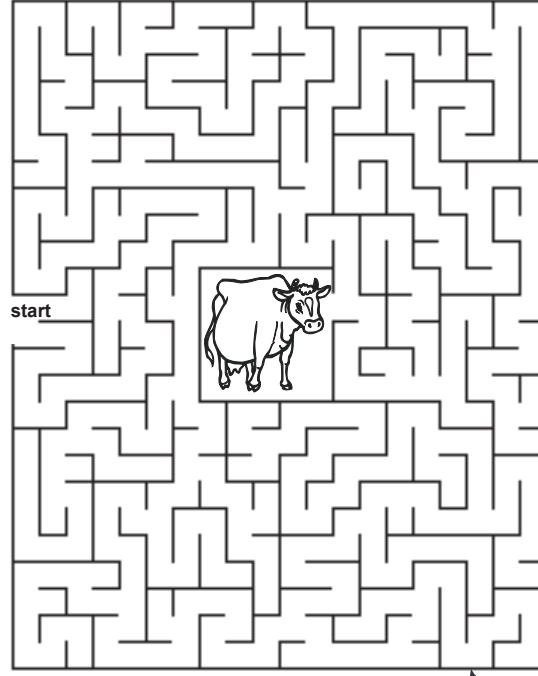
- | | |
|--------|------------|
| APPLE | MILK |
| BARN | PEAR |
| CHEESE | PIG |
| CORN | POTATO |
| COW | SALMON |
| CREAM | SHEEP |
| EGGS | STRAWBERRY |
| GRAPES | TOMATO |
| ICE | TRACTOR |
| LEMON | WHEAT |

Food Fact: It takes 50,000 bees to produce 500 pounds of honey in one year!

Food Fact: Montana produces enough milk to fill 434 swimming pools each year. Agriculture is its top industry.

Food Fact: The average ear of corn has 800 kernels arranged in 16 rows. Iowa grows the most corn in the USA.

Please help find the missing cow



Grow your own sweet potato plant

Wash sweet potato thoroughly. Insert toothpicks into the sides about 1/3 of the way down. Place the sweet potato into the jar. Fill the jar with water. In about 15 days the sweet potato will begin to bud, and for the next 3 to 6 months vines will grow from the sweet potato.

Remember: Always keep the jar filled with water. Keep the sweet potato plant in full to moderate sunlight. Keep the sweet potato plant at room temperature.



Food Fact: There are over 15,000 varieties of rice.

Fruit Salad en Español

Match the English word with the Spanish word for these popular summer fruits. We got you started.

- | | |
|------------|------------|
| apple | uva |
| pear | pera |
| peach | limón |
| grape | melocotón |
| orange | manzana |
| strawberry | fresa |
| banana | plátano |
| lemon | anaranjado |

A: apple - manzana, pear - pera, peach - melocotón, grape - uva, orange - anaranjado, strawberry - fresa, banana - plátano, lemon - limón

You can be an FSA Youth Loan Winner



Americans eat around 350 slices of pizza per second.

Find out about FSA Youth Loans on our website !!