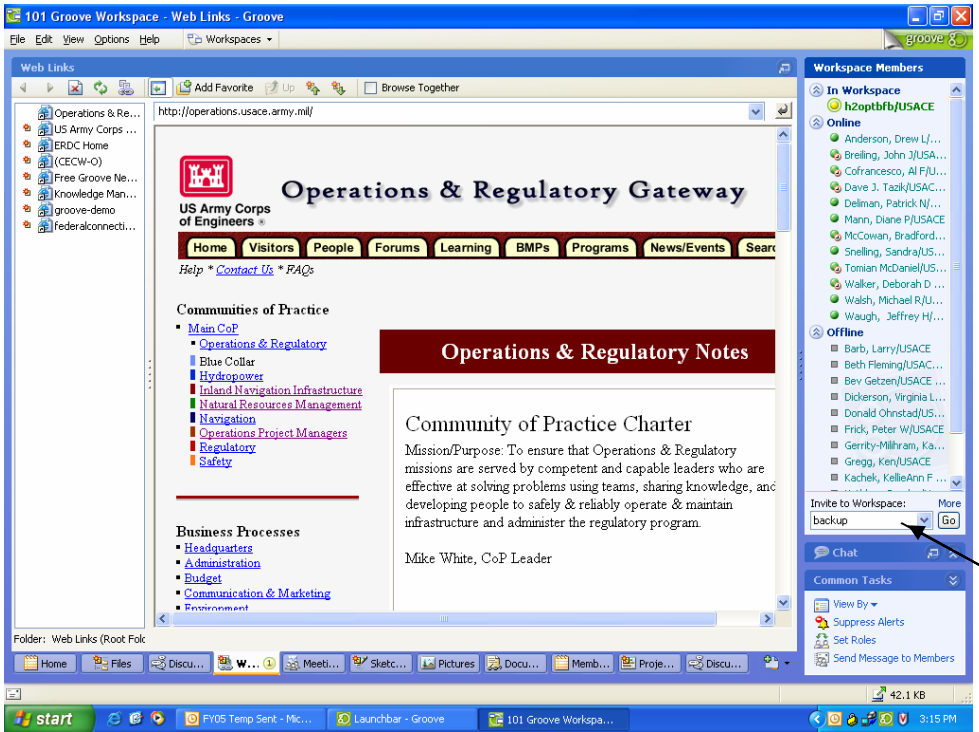
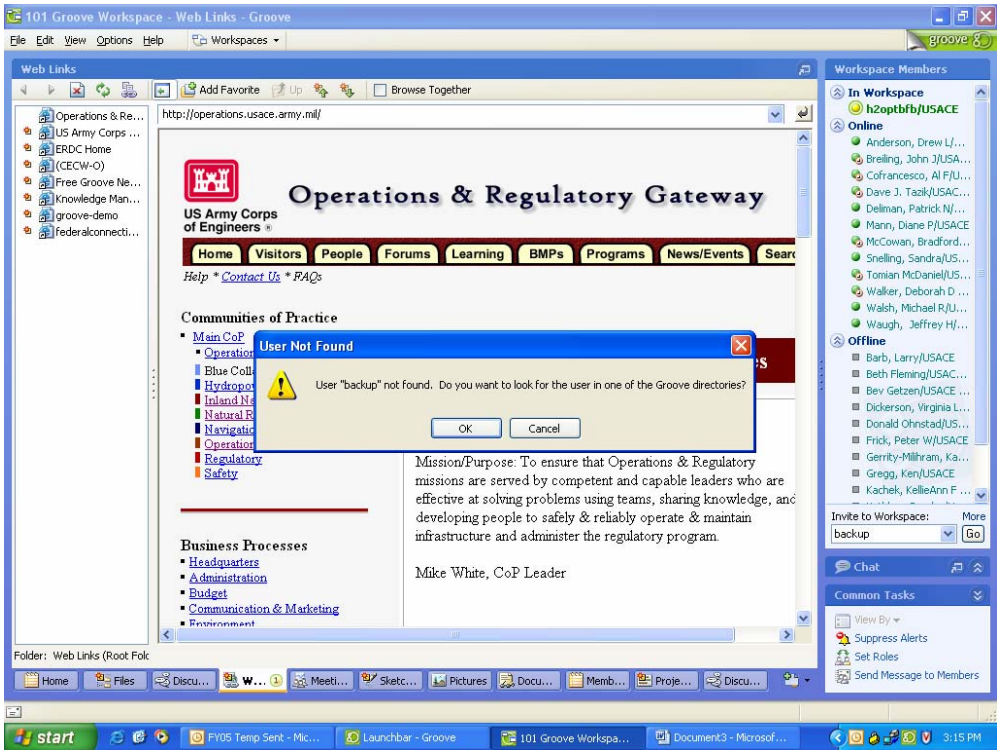


# Inviting backup server to Groove Workspace, page 1 of 2

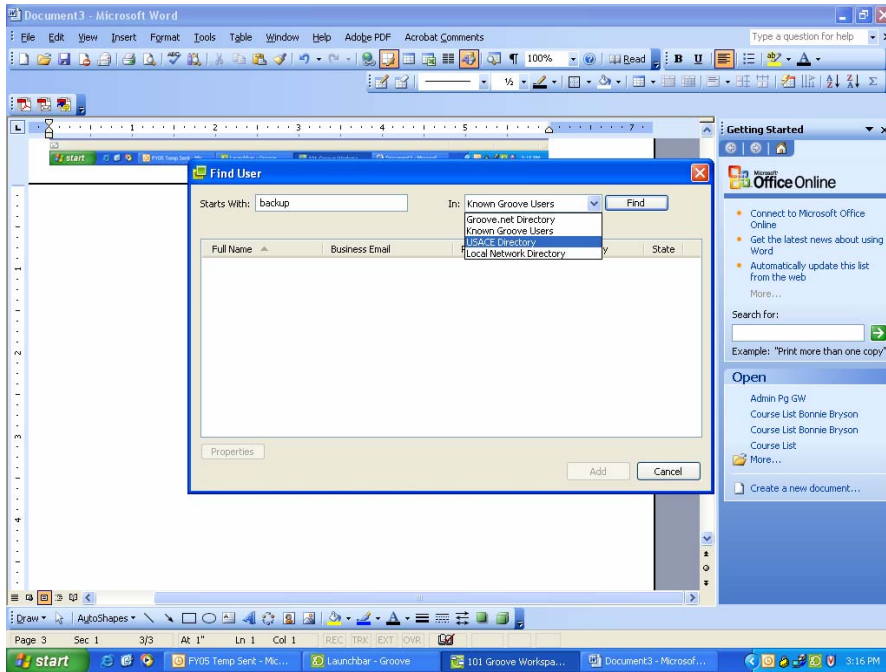


Type "Backup" and click on "GO"

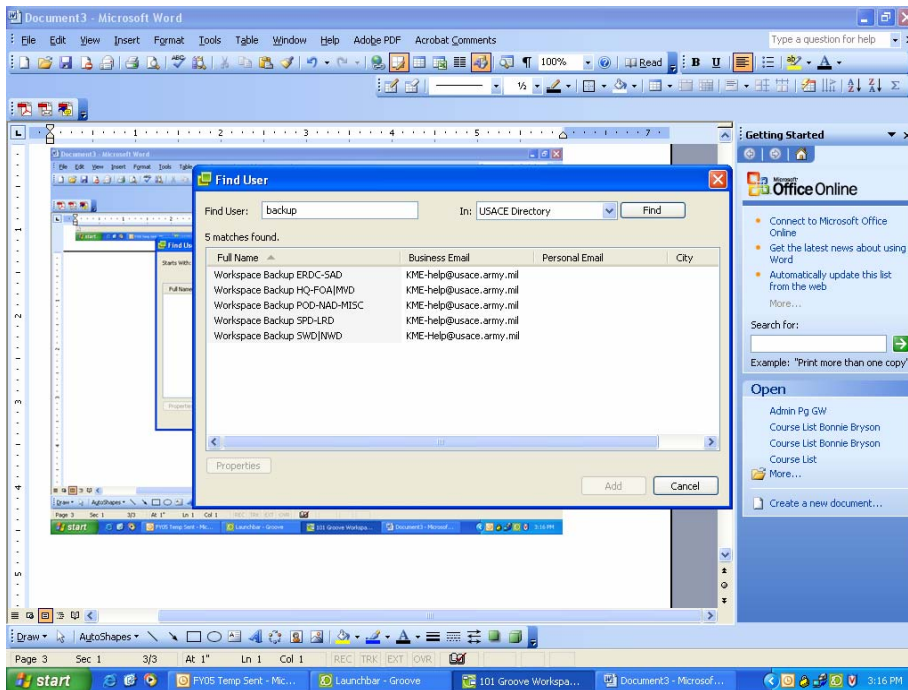


When the User Not Found box opens, click "OK" to look for the user

## Inviting backup server to Groove Workspace, page 2 of 2



On the Find User box, use dropdown menu to select “USACE Directory” then click “Find”.



Select the “Workspace Backup ERDC-SAD” server, and invite as a “Participant”. The server will automatically accept, although it may not show up immediately on your Workspace Members list.