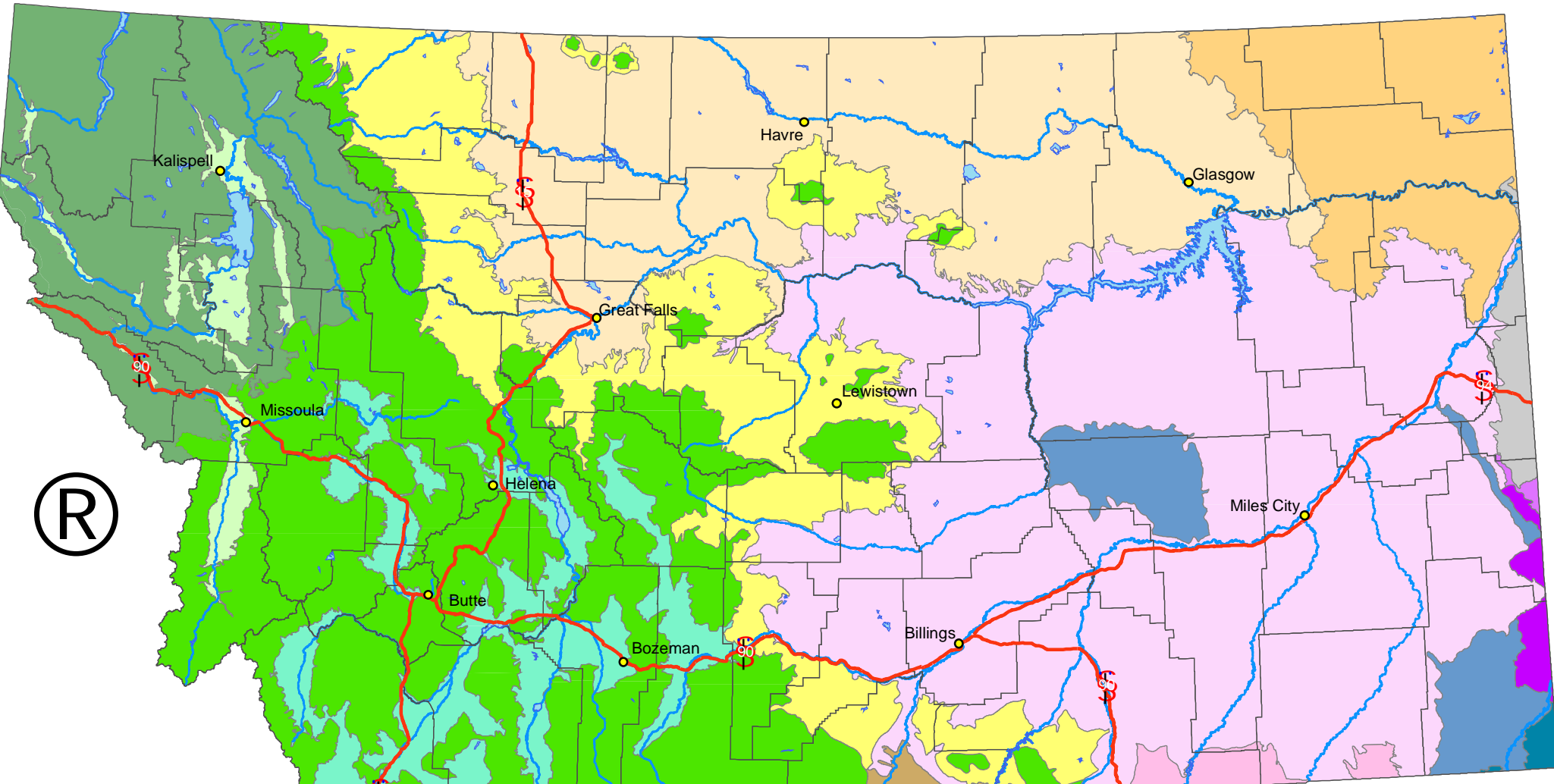


Major Land Resource Areas

(MLRA with state subdivisions)



- County Boundaries
- Lakes
- Major Rivers
- Interstate Highways

Major Land Resource Areas

- | | |
|--|--|
| 32, Northern Intermountain Desertic Basins | 54, Soft Shale Plains |
| 43A, Northern Rocky Mountains | 58A, Northern Rolling Plains, Northern Part |
| 43B, Central Rocky Mountains | 58B, Northern Rolling Plains, Southern Part |
| 44A, Northern Rocky Mountain Valleys | 58C, Northern Rolling Plains, Northeastern Part |
| 44B, Central Rocky Mountain Valleys | 58D, Northern Rolling Plains, Eastern Part |
| 46, Northern Rocky Mountain Foothills | 60A, Pierre Shale Plains and Badlands |
| 52, Brown Glaciated Plains | 60B, Pierre Shale Plains and Badlands, Northern Part |
| 53A, Northern Dark Brown Glaciated Plains | |