

PROJECT DESCRIPTION

PROPOSED FACILITY

The Project proposes to construct an ADA approved access ramp and fishing platform in order to provide recreational access to the upstream side of the left wing of Foster dam. The proposed facility will consist of concrete surfaced switchback ramps and platforms with steel guardrails and wooden wheel stops, constructed in accordance with the attached drawings.

PLANNING AND DESIGN

The proposed facility was designed by the Willamette Valley Project staff at Foster Lake in collaboration with the Oregon Paralyzed Veterans of America, and in accordance with current ADA standards.

The proposed facility lies partly within two management units as designated in Part I - Resource Use Objectives (Foster Lake Master Plan). Management Unit A: Dam Operations Area - consists of lands allocated for (Project Operations) and includes the operational areas of the Project Office, powerhouse, crane access road and the downstream face of the dam. The gravel surfaced public parking area and stairway to the roadway on the downstream face of the dam is located within Unit A. Management Unit J: Main Lake Shoreline - consists of lands allocated for (Low Density Recreation Use) and includes those lands lakeward of Highway 20 and the road crossing the top of the dam. The objective of the proposed structure is to provide safe recreation access from the parking area within Unit A to the narrow strip of land used for recreation purposes within Unit J. The land base within Unit J is not adequate to develop public motor vehicle access and parking facilities.

The bench just at the conservation pool along the upstream face of the dam serves a variety of recreation, special events and operational needs. This area is maintained by the Project in support of special events such as the Sportsman's Holiday and the annual Free Fishing Day Activities. The area is also a popular

Challenge Cost-Sharing Agreement
between Portland District, COE,
The Oregon Paralyzed Veterans of America and
The Oregon Department of Fish and Wildlife

access for swimming and fishing. The Operational Management Plan for Foster Lake (September 1993) prescribes this proposed improvement for access as well as other improvements to the site to enhance recreational opportunities for the public.

PARTNERS IN CONSTRUCTION

Foster lake Natural Resources Staff have negotiated the proposed partnering agreement and contribution pledges. For the purposes of the Challenge Cost Sharing Program the partners to the Agreement are:

Oregon Paralyzed Veterans of America
16079 S.E. McLoughlin blvd.
Milwaukie, Oregon 97267-4649
POC: Don Darland 503-394-2305

Oregon Department of Fish and Wildlife
Fish Restoration and Enhancement Program
P.O. Box 59
Portland, Oregon 97207
POC: Dennis Wise, R&E Coordinator 503-229-5410 #352

U.S. Army Corps of Engineers
Portland District
P.O. Box 2946
Portland, Oregon 97208
POC: John Sandberg 503-367-5127 or James Beal 503-688-8147

OPERATION AND MAINTENANCE

The Corps of Engineers Willamette Valley Projects will assume ownership of the completed facility as well operation and maintenance responsibility. Operation and maintenance of the facility will be in accordance with an approved operational management plan and prioritization contingent upon available funding.

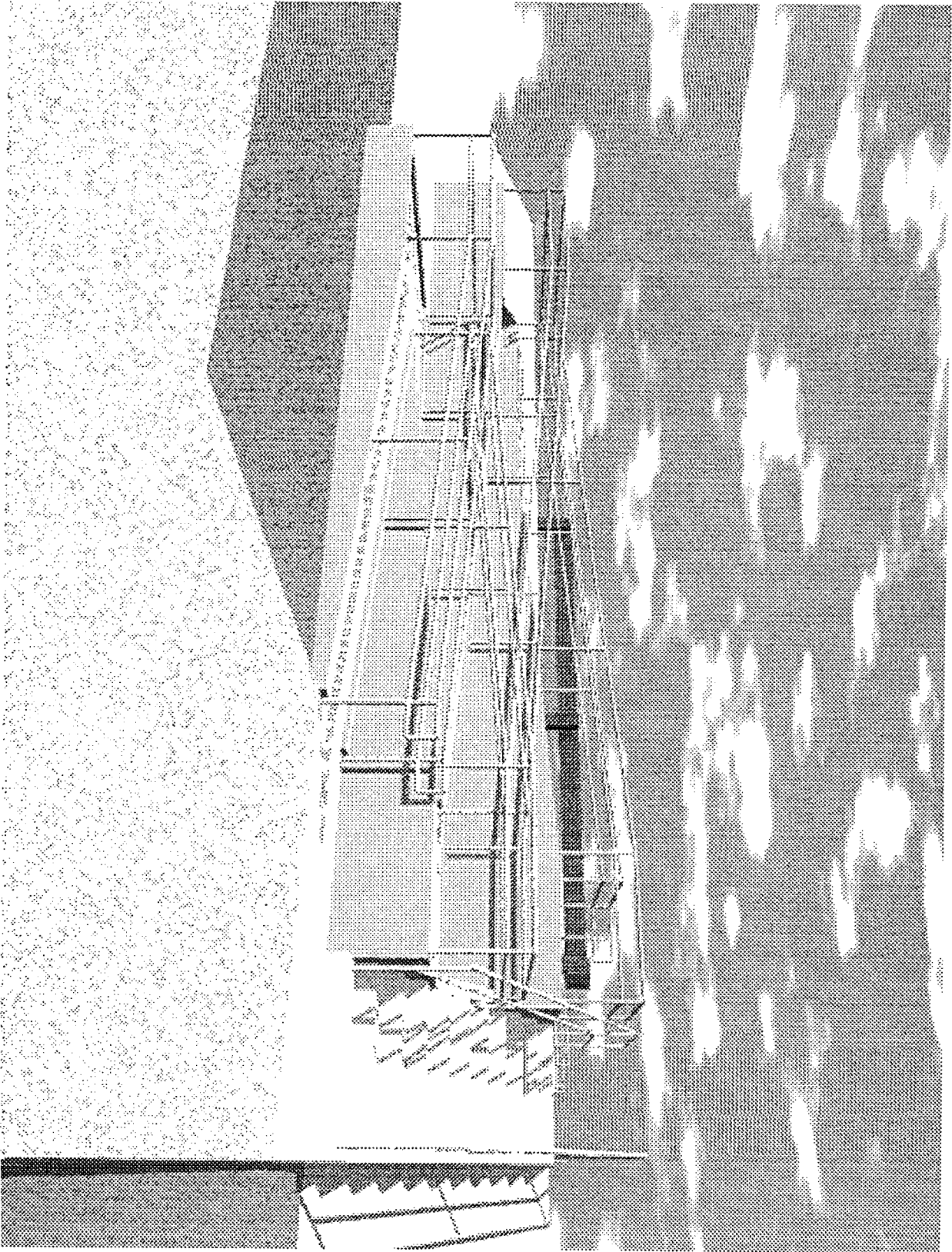
Challenge Cost-Sharing Agreement
between Portland District, COE,
The Oregon Paralyzed Veterans of America and
The Oregon Department of Fish and Wildlife

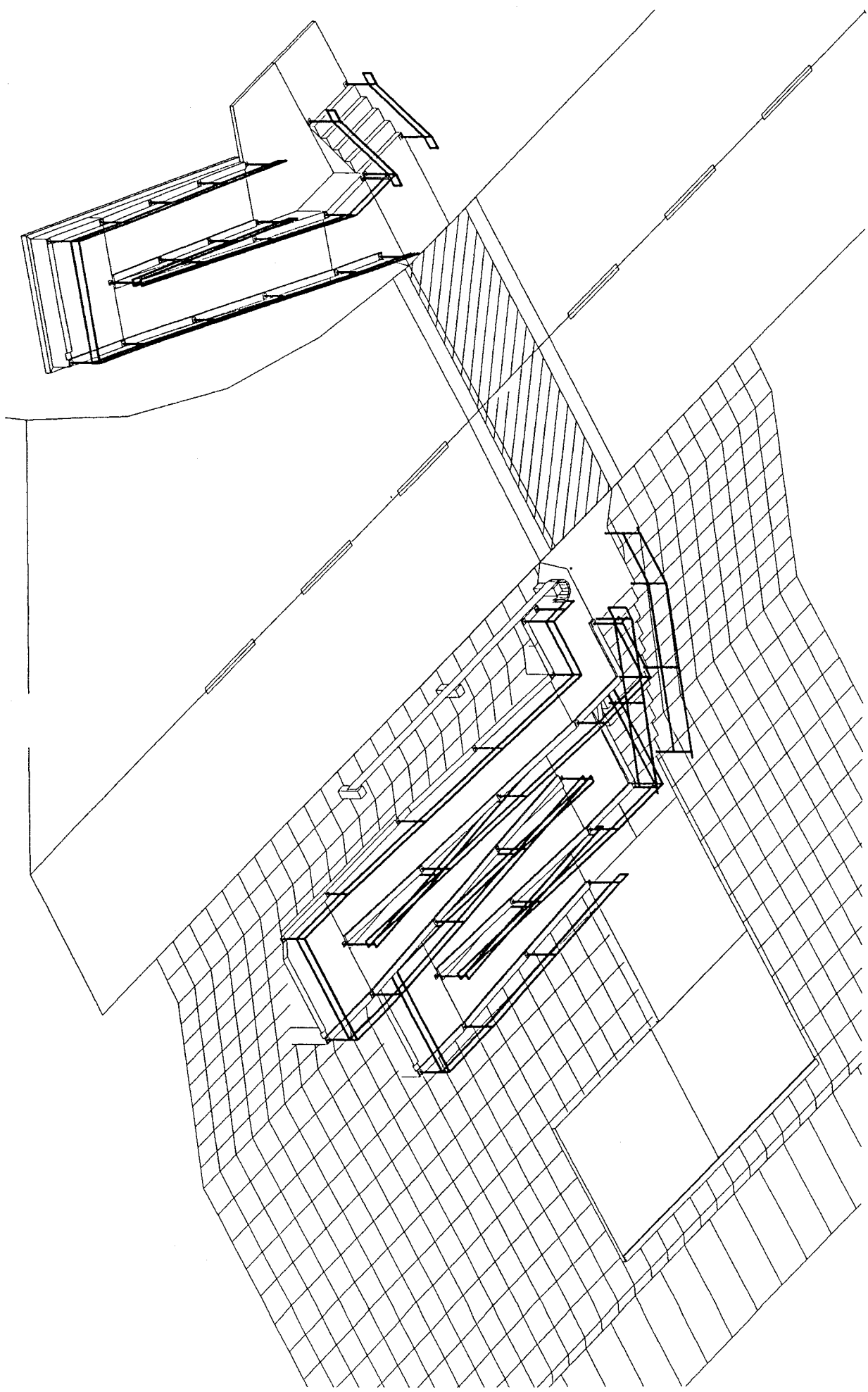
PROJECT TIME FRAME

The project completion time frame identified within the Fish Restoration and Enhancement Program Grant Agreement is from August 1, 1995 through October 1, 1997. Actual construction of the facility is expected to begin on or about 1 February 1996 and should be completed no later than 30 June 1996.

CHALLENGE COST-SHARING AGREEMENT

The attached draft Challenge Cost-Sharing Agreement has been prepared to define the various partner responsibilities.

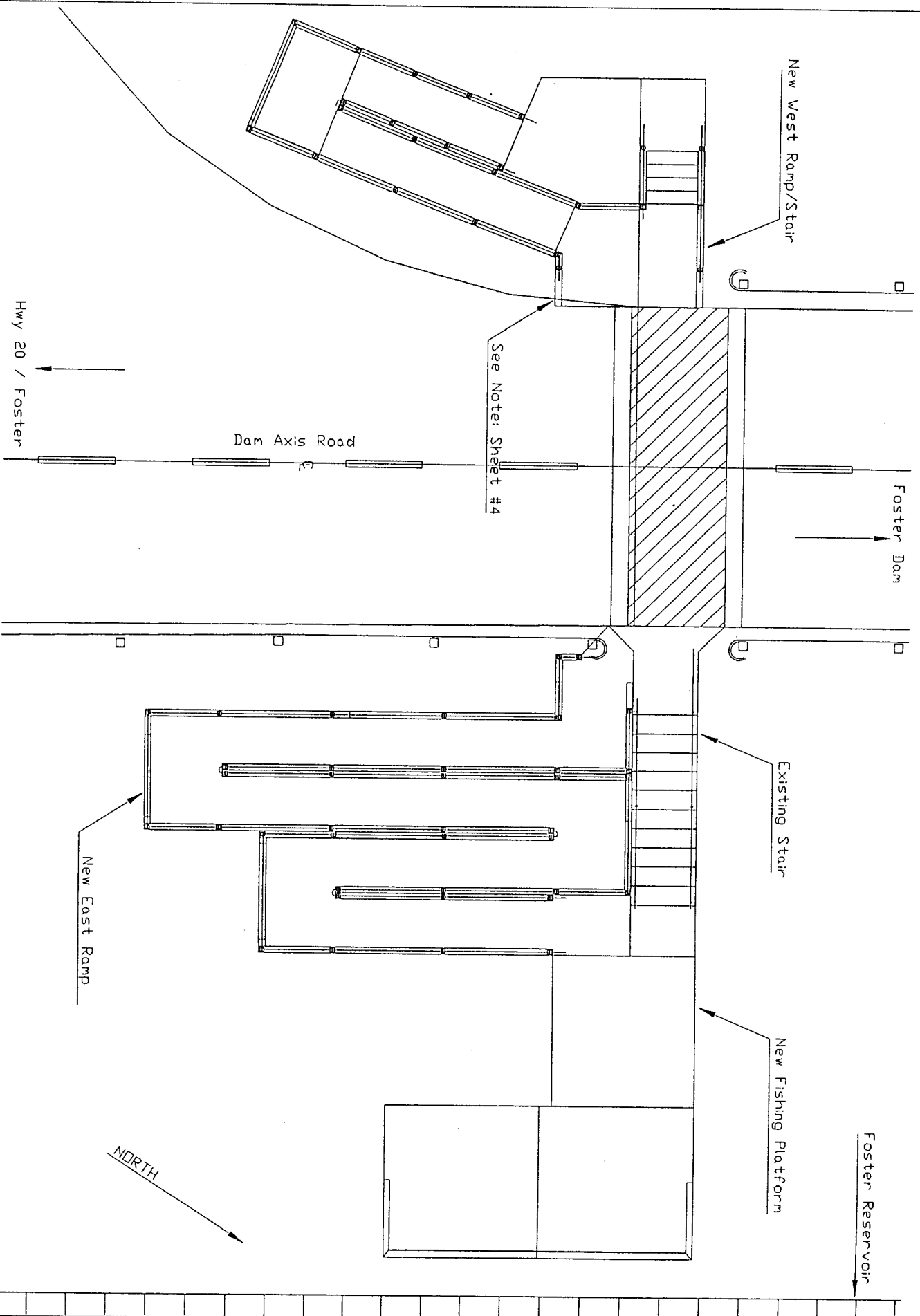




Foster Project:
Wing Dam Accessibility Ramp and Fishing Platform
Crane Access Road and Osage Street

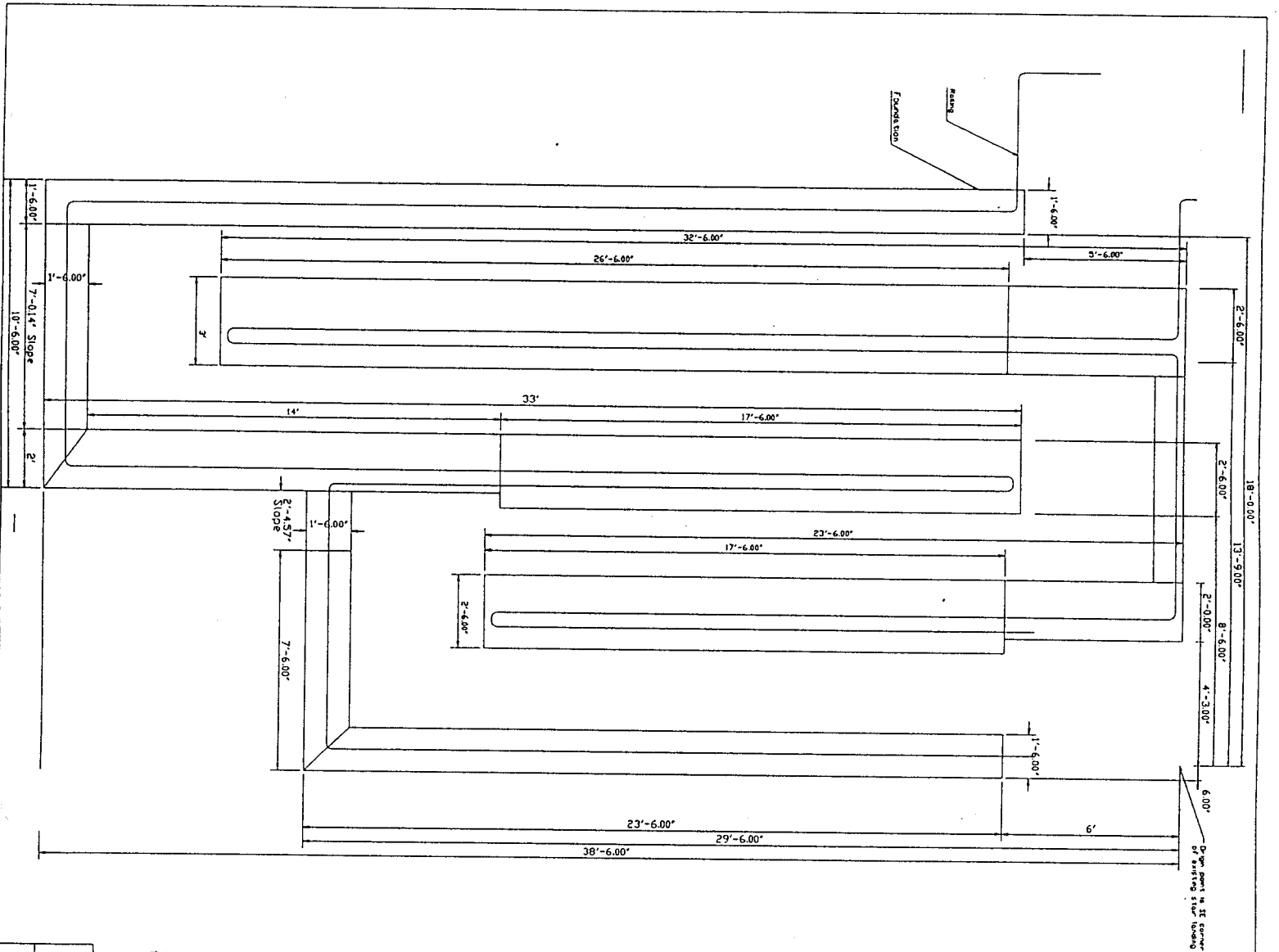
Drawings Title Index:

Drawings	Page
Plan; Overview of Access Ramps	1
Plan; Eastside Ramp Foundation	2
Plan; Eastside Ramp Wall	3
Plan; Westside Ramp and Stairs Foundation	4
Plan; Westside Ramp and Stairs Wall	5
Section A-A; Westside Ramp Landing #1,3	5
Plan; Fishing Platform	6
Section A-A; Eastside Ramp Landing #1,3,5,Fishing Platform	7
Section B-B; Eastside Ramp Landing #2,	8
Section C-C; Eastside Ramp Longitudinal Ramp #2	8
Plan and Elevation; Post base plate	9
Plan and Elevation; Eastside handrails	10-12
Plan and Elevation; Westside handrails	13-15



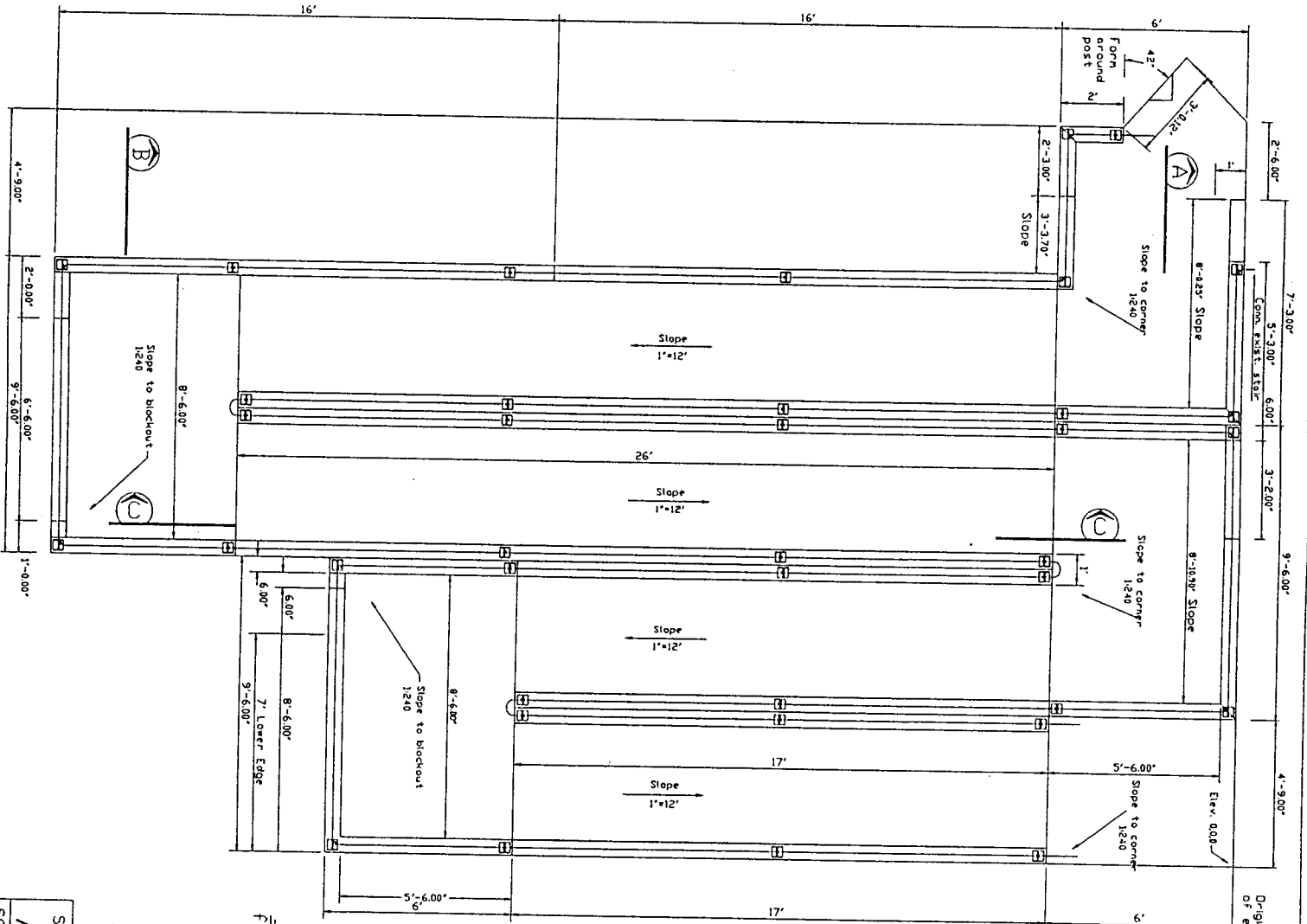
New Access Ramps and Fishing Deck
 f_m_ramp.dwg

SIZE	GAGE NO.	FILENAME:	SHEET	OF	REV
A	CEN-PP-DP-V	f_r_pr02.dwg	1	15	D
SCALE	Foster Project Wing Dam Accessibility Ramp General Site Plan				
1"=100'					
					080895



East Ramp
 f_r_e-rpdwg

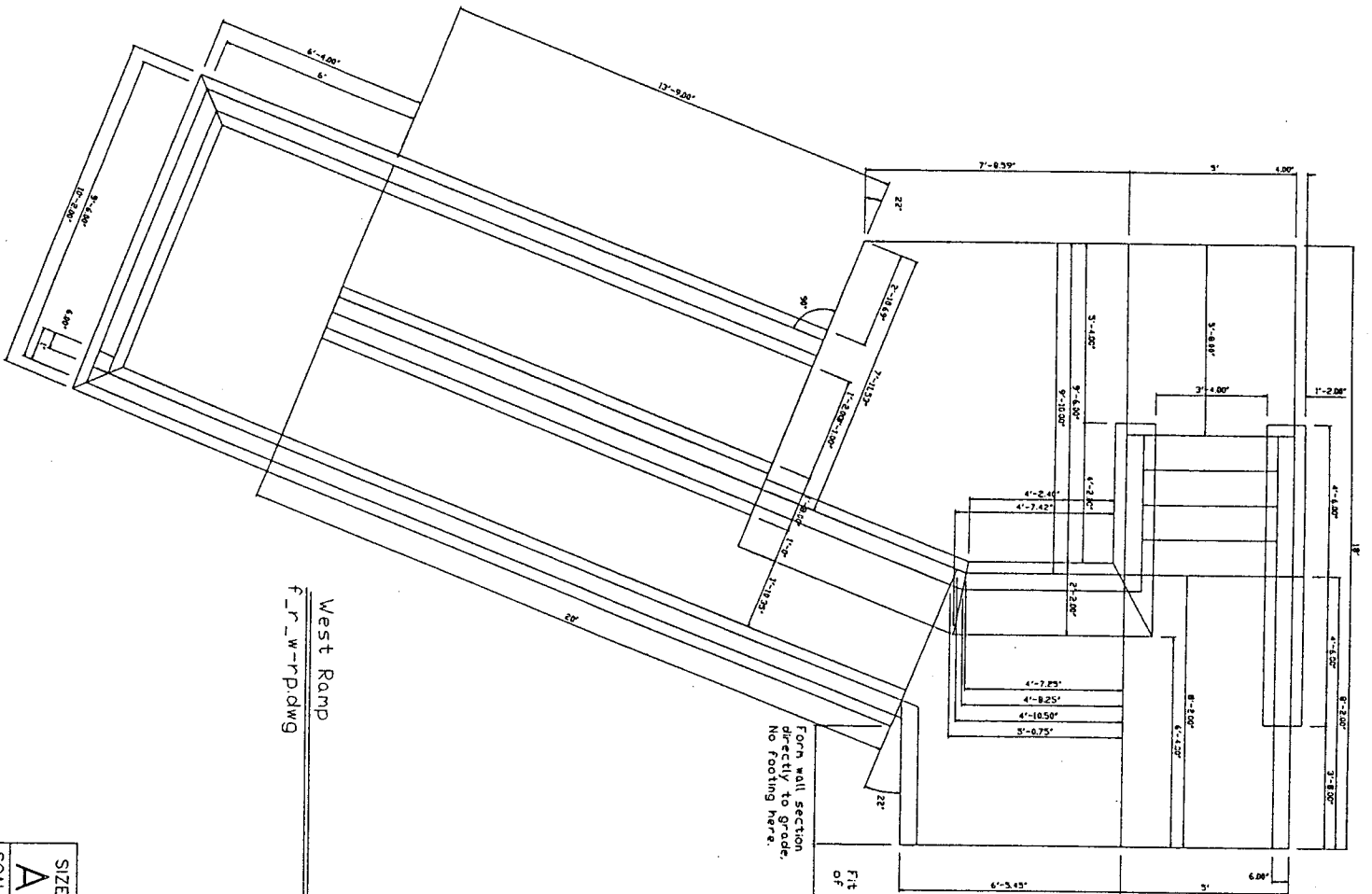
SIZE	GAGE NO.	DWG NO.	Foster / Green Peter Projects	REV
A	CEN-PP-DP-V		Wing Dam Accessibility Ramp	1
SCALE	FILENAME:	SHEET	Of	DATE
1/8"=1'0"	f_r_e-rpdwg	2	01	080895



Origin point is SE corner of existing stair landing

East Ramp
 f_r_e-r.p.dwg

SIZE	GAGE NO.	DWG NO.	Foster / Green Peter Projects	REV
A	CEN-PP-DP-V	Wing Dam Accessibility Camp		1
SCALE	1/4"=1'0"	FILENAME:	f_r_e-r.p.dwg	SHEET 3 OF 1
			East Ramp - Wall, Lan	080895



West Ramp
f_r_w-rp.dwg

Form wall section
directly to grade.
No footing here.

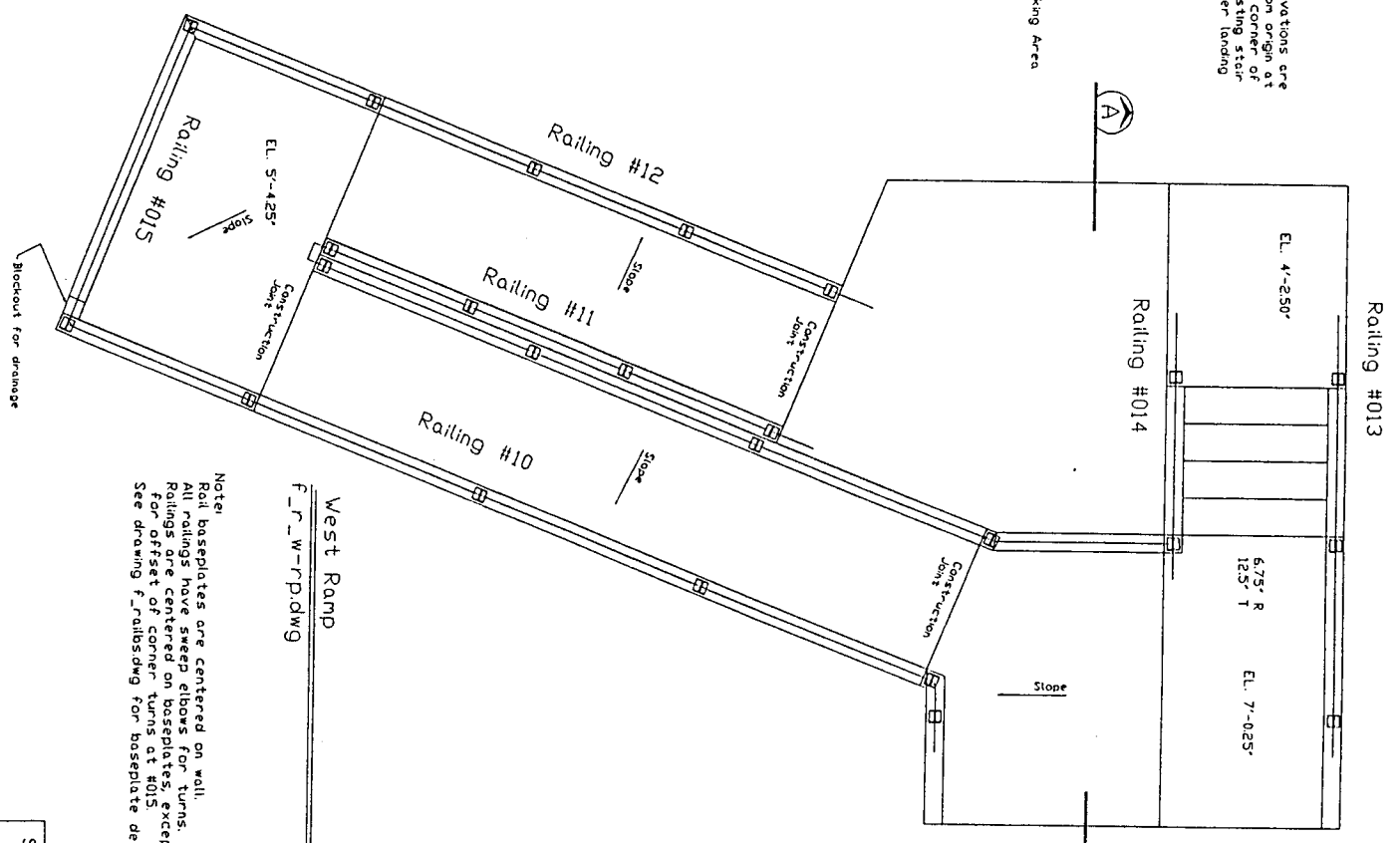
Fit edge to curvature
of Dan Road if present.

To SE corner of stair landing.

SIZE	GAGE NO.	PROJECT	REV
A	CEN-PP-DP-V	Wing Dam Accessibility Ramp	
SCALE	FILENAME:	SHEET	OF
3/16"=1'0"	f_r_pr01.dwg	4	15
			D
			J808935

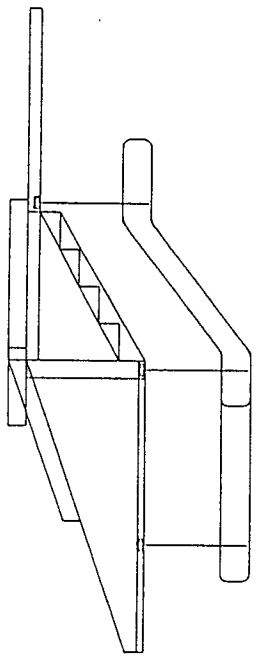
Elevations are from origin at SE corner of existing stair tower landing

Parking Area



West Ramp
f_r_w-rp.dwg

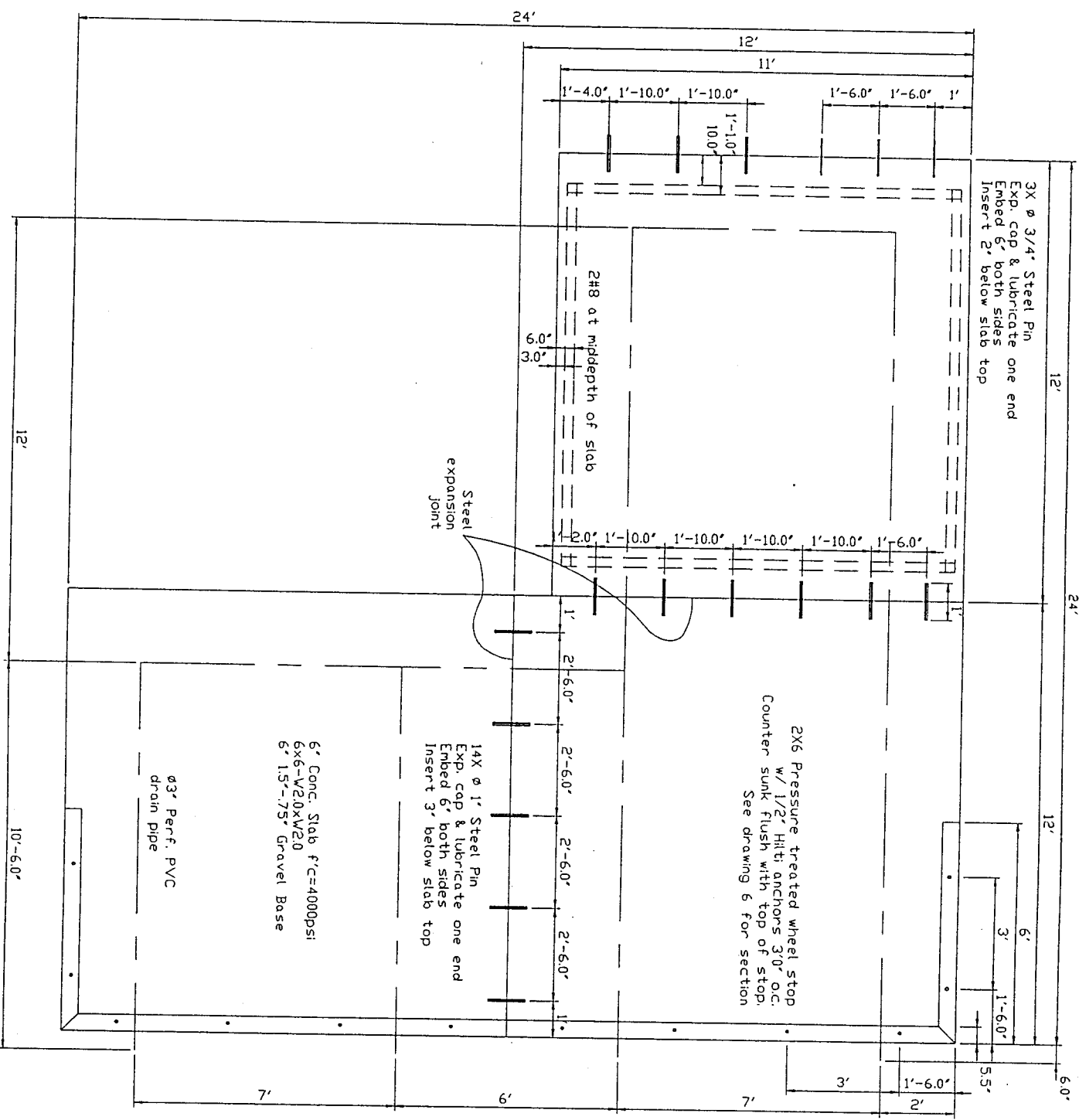
Note:
Rail baseplates are centered on wall.
All railings have sweep elbows for turns.
Railings are centered on baseplates, except for offset of corner turns at #1015.
See drawing f_rails.dwg for baseplate detail



Unfinished
Section A - A

SIZE	GAGE NO.	PROJECT	REV
A	CEN-PP-DP-V	Foster Project Wing Dam Accessibility Ramp West Ramp-Railing, Section	
SCALE	FILENAME:	SHEET	OF
3/16"=1'0"	f_r_pr01.dwg	5	15
		D7	20895

Concrete Deck
f_r_deck.dwg



3X ϕ 3/4" Steel Pin
Exp. cap & lubricate one end
Embed 6" both sides
Insert 2' below slab top

2X6 Pressure treated wheel stop
w/ 1/2" Hilt anchors 3.0" o.c.
Counter sunk flush with top of stop.
See drawing 6 for section

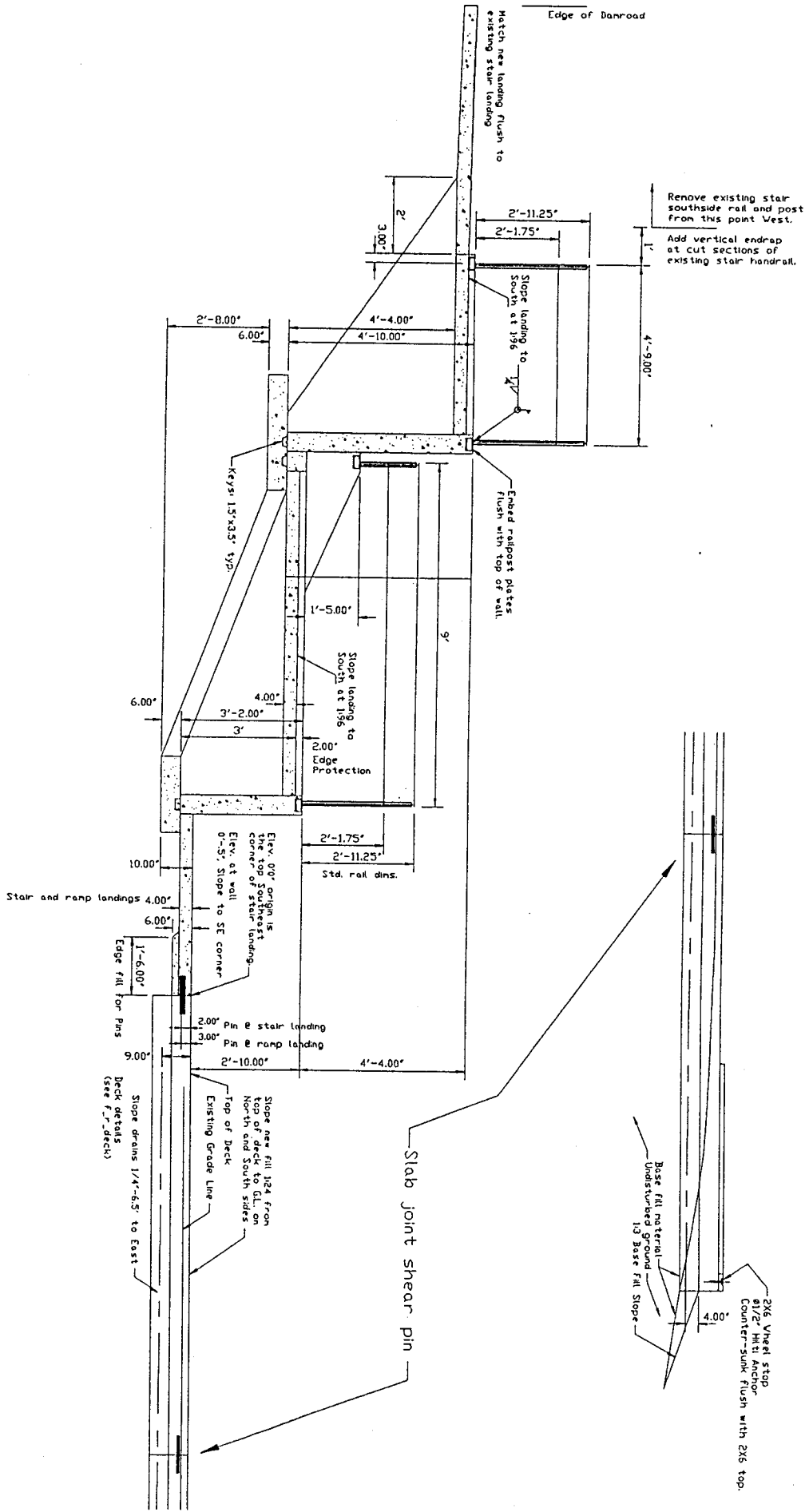
14X ϕ 1" Steel Pin
Exp. cap & lubricate one end
Embed 6" both sides
Insert 3' below slab top

6' Conc. Slab f'c=4000psi
6x6-W20xW20
6' 1.5'-.75" Gravel Base

ϕ 3" Perf. PVC
drain pipe

SIZE	GAGE NO.	DWG NO.	Foster / Green Peter Projects	REV
A	CEN-PP-QP-V	Wing Dam Accessibility Ramp Fishing Platform - F	Revision	11
SCALE	FILENAME:	SHEET	OF	I.E.
1/4"=1'0"	f_r_deck.dwg	6	1	080895

East Ramp
f_r_e-rp.dwg

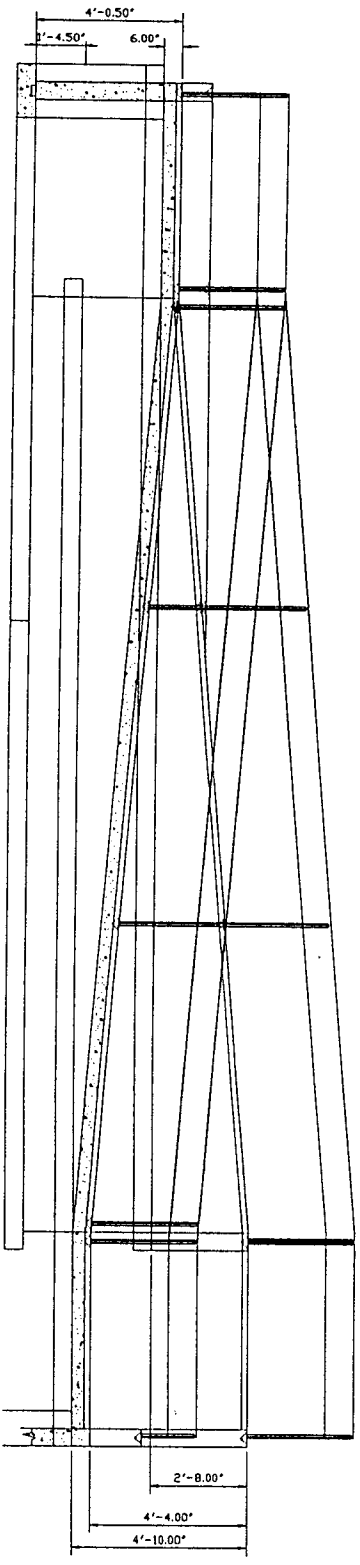


SCALE	1/4"=1'-0"	FILENAME:	f_r_pr04.dwg	SHEET	7	OF	1.	REV	1
SIZE	A	GAGE NO.	CEN-PP-OP-V	DWG NO.	Foster / Green Peter Projects Wing Dam Accessibility Ramp East Ramp - Sect			REV	1

E: 080895

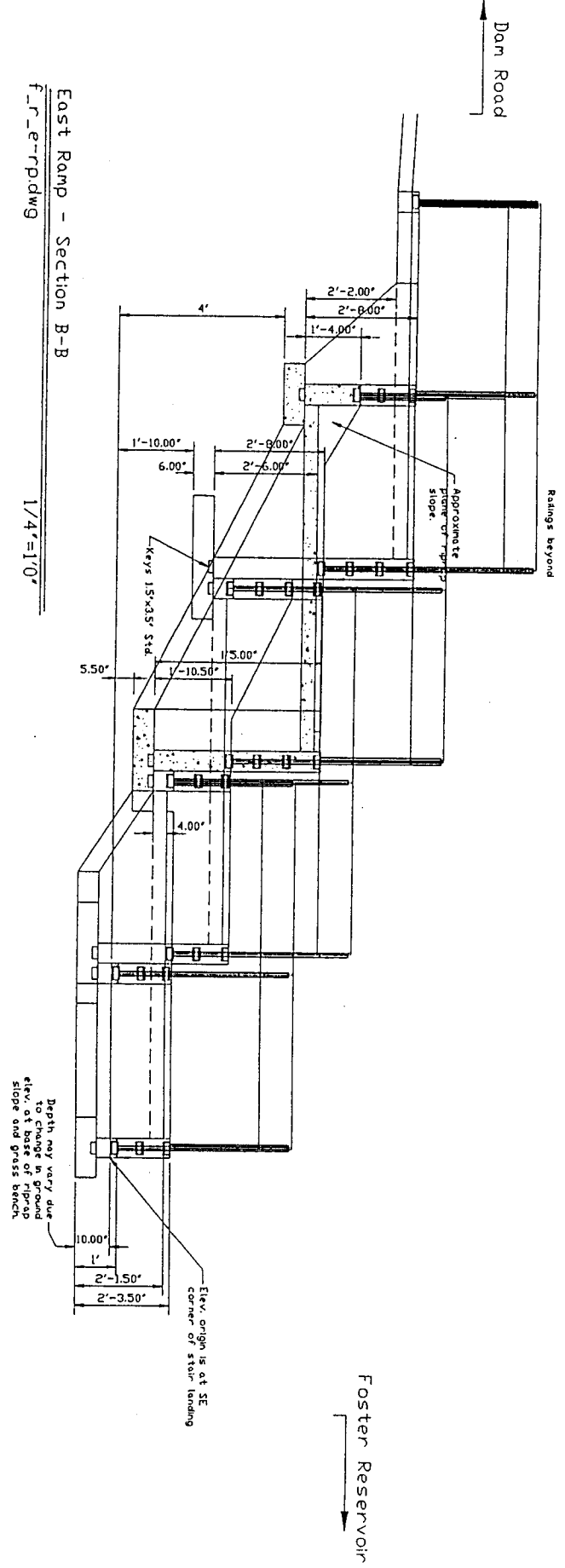
East Ramp - Section C-C
 f_r_e-rp.dwg

3/16"=1'0"

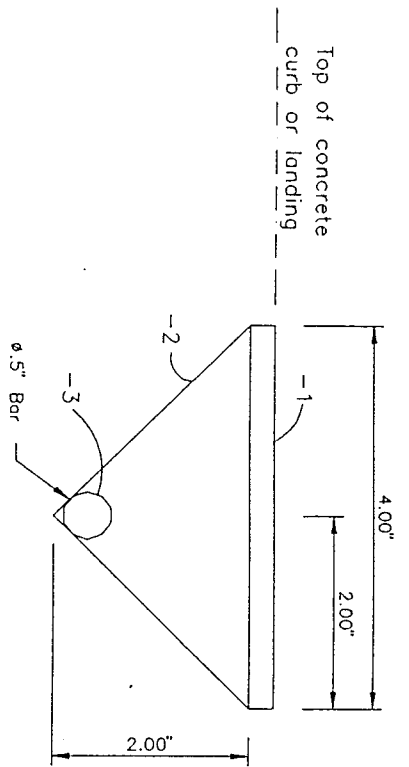


East Ramp - Section B-B
 f_r_e-rp.dwg

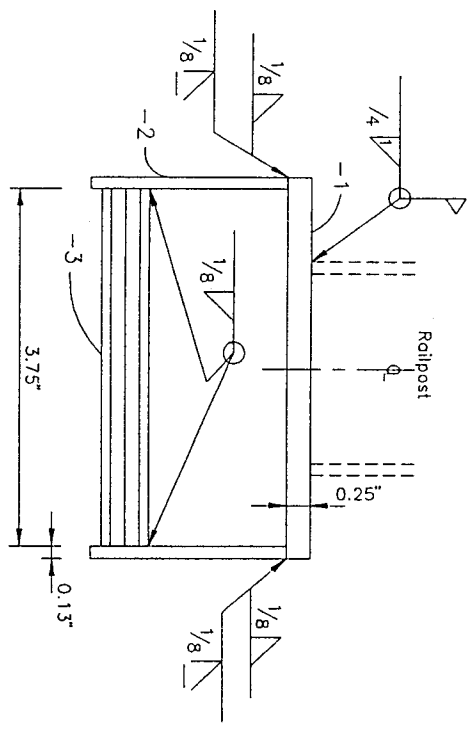
1/4"=1'0"



SIZE	GAGE NO.	DWG NO.	PROJECT	REV
A	CEN-PP-DP-V	Foster / Green Peter Projects	Wing Dam Accessibility Ramp	1
SCALE	FILENAME:	SHEET	TE:	
varies	f_r_dp04.dwg	8	080895	



Front View



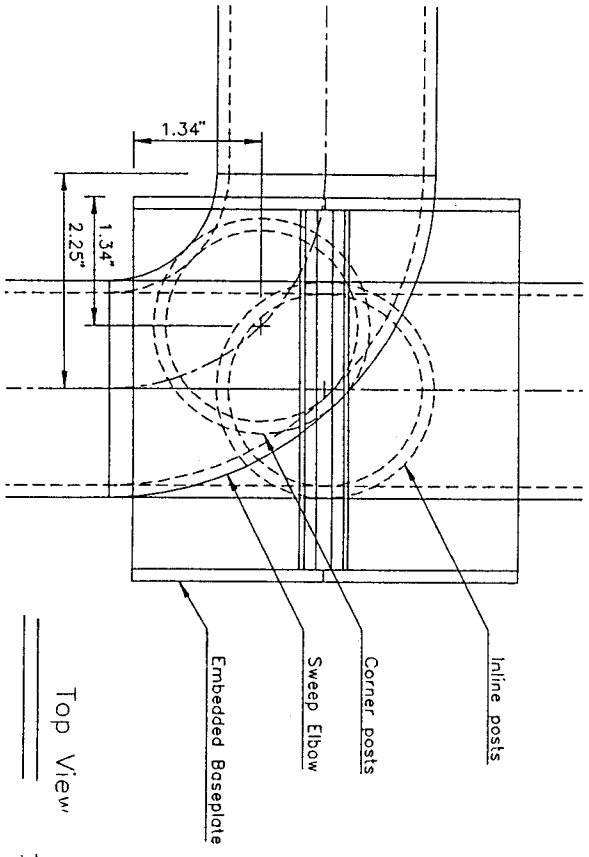
Side View

QTY RECD	CAGE CODE	SYM	PART OR IDENTIFYING NO.	DESCRIPTION	MATERIAL SPECIFICATION	ITEM NO.
62			-1	Top Plate	4"x4"x1/4" A36	3
124			-2	Side Plate	4"x2"x1/8" A36	2
62			-3	Anchor Bar	ø1/2"x3-3/4" Bar	1

PARTS LIST

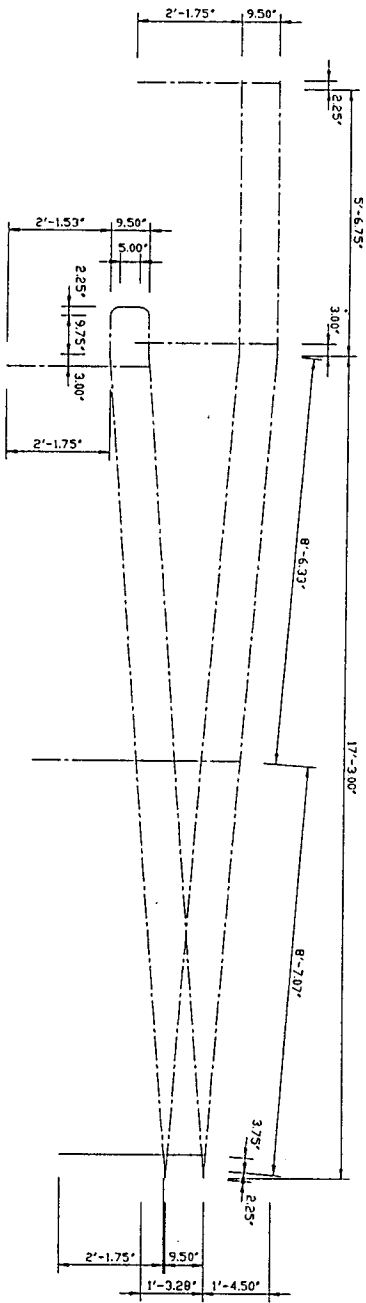
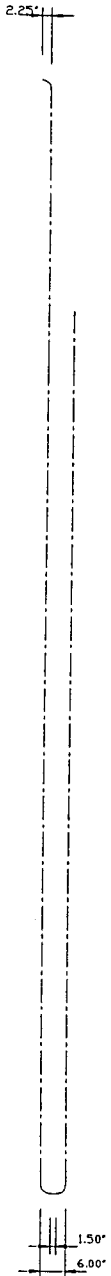
Note:
 30 Baseplates to be installed flat.
 32 Baseplates to be installed at 5° angle
 flush with retaining wall slope.

Base plates and material list
 f_rail-b.dwg

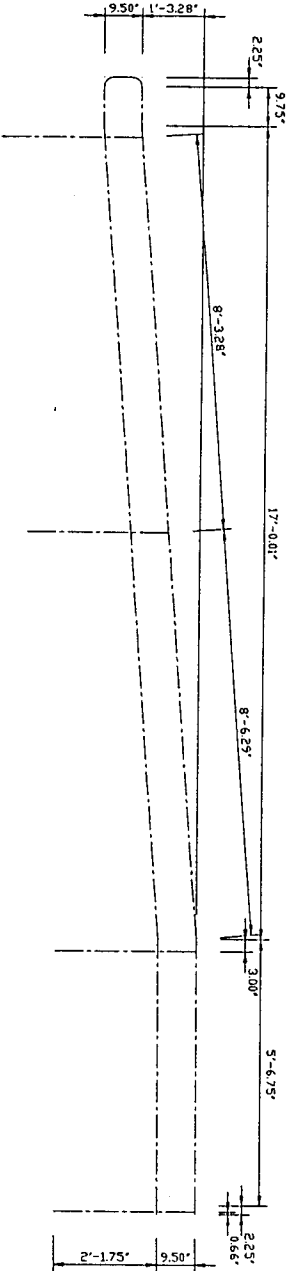


Top View

SIZE	GAGE NO.	DWG NO.	Foster / Green Peter Projects	REV
A	CEN-PP-DP-V	Wing Dam Accessibility Ramp		1
SCALE	6"=1'0"	FILENAME:	f_railb.dwg	SHEET
				9
				01
				TE:
				080895

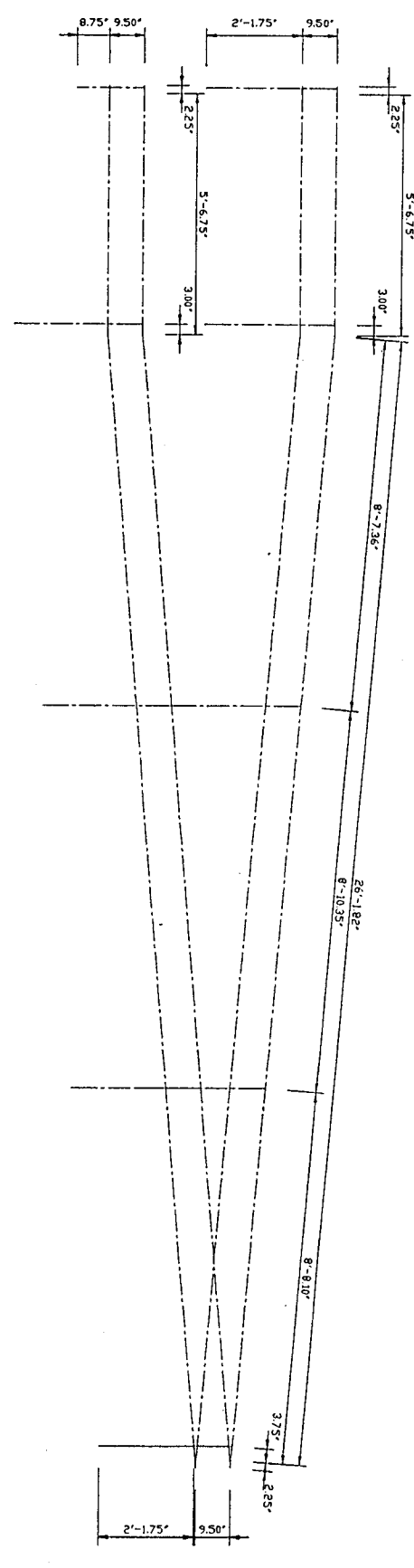
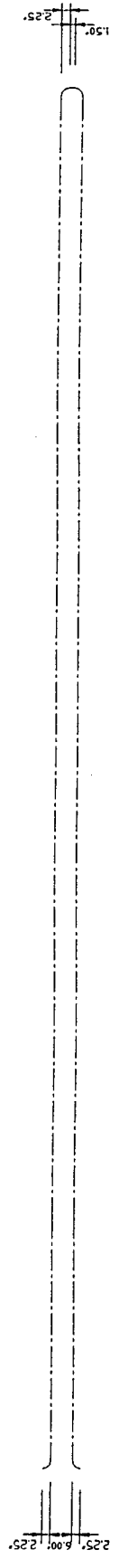


Railing #002
f_r_r002.dwg

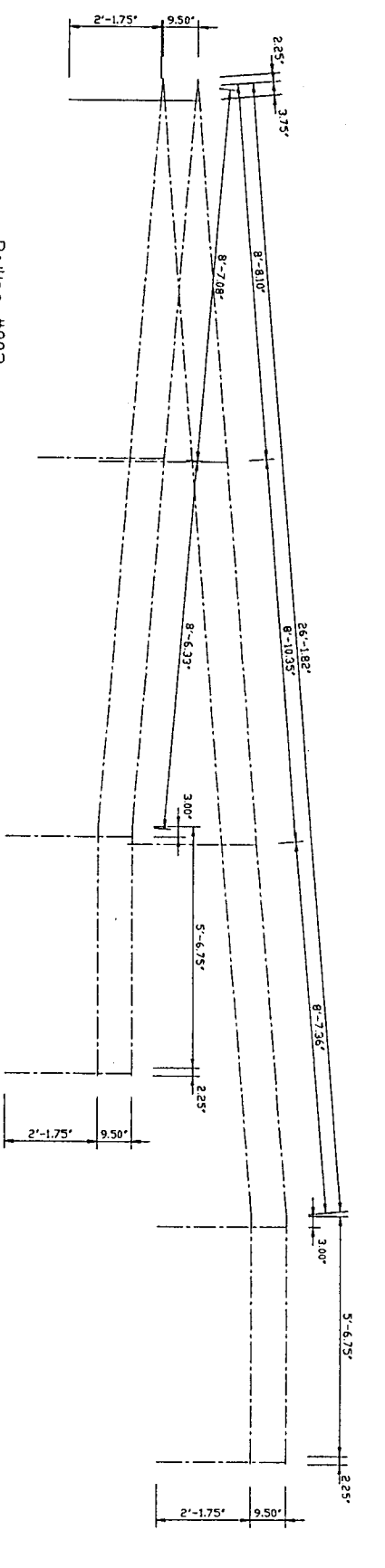


Railing #001
f_r_r001.dwg

SIZE	GAGE NO.	FILENAME:	SHEET	OF	REV
A	CEN-PP-DP-V	f_r_pr21.dwg	10	15	J80895
SCALE	Foster Project Wing Dom Accessibility Ramp East Ramp-Railing #001, #00				
1/4"=1'0"					

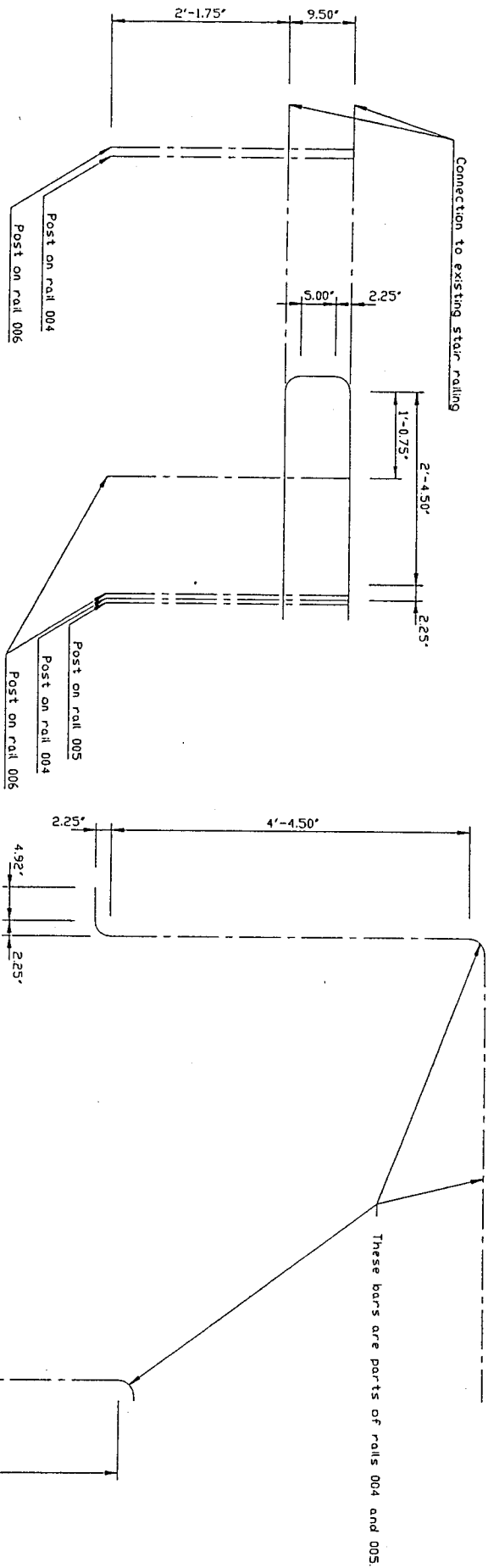


Railing #004
f_r_r004.dwg

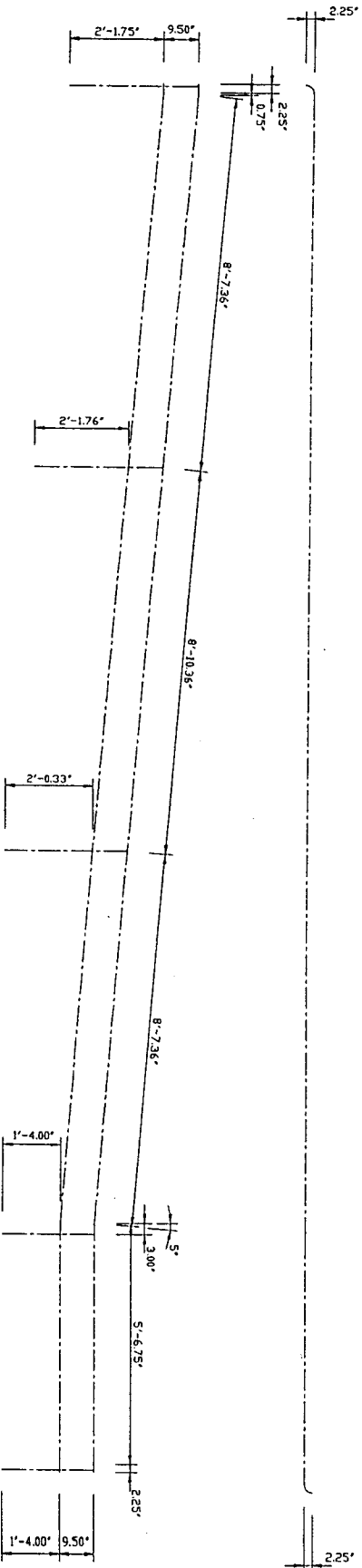


Railing #003
f_r_r003.dwg

SIZE	GAGE NO.	Foster Project		REV
A	CEN-PP-DP-V	Wing Dan Accessibility Ramp		
SCALE	FILENAME:	East Ramp-Railing #003, #04		
1/4"=1'0"	f_r_pr22.dwg	SHEET	11 OF 15	D
				J808935

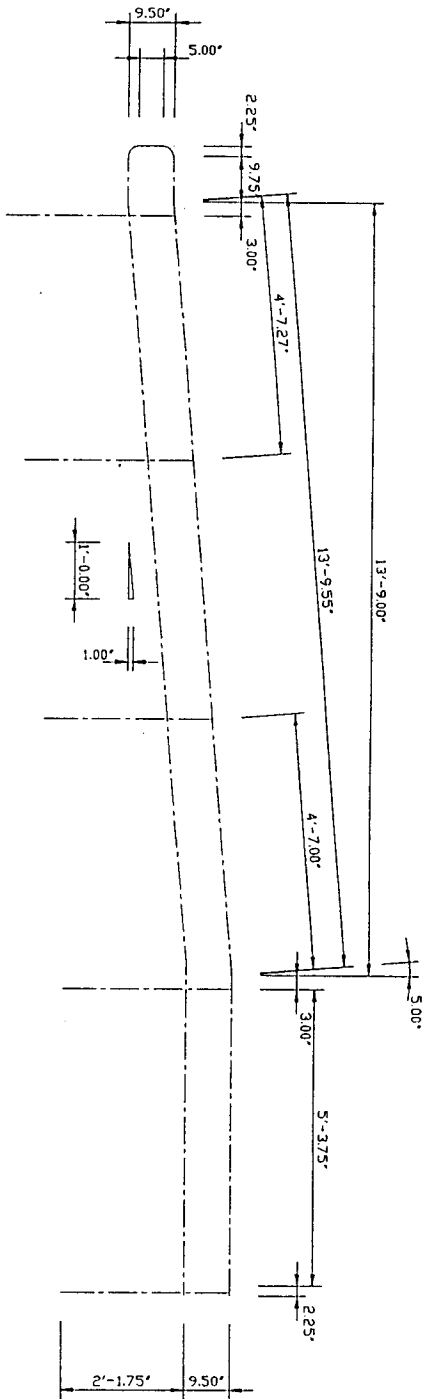


Railing #006
 f_r_r006.dwg
 1/2"=1'0"

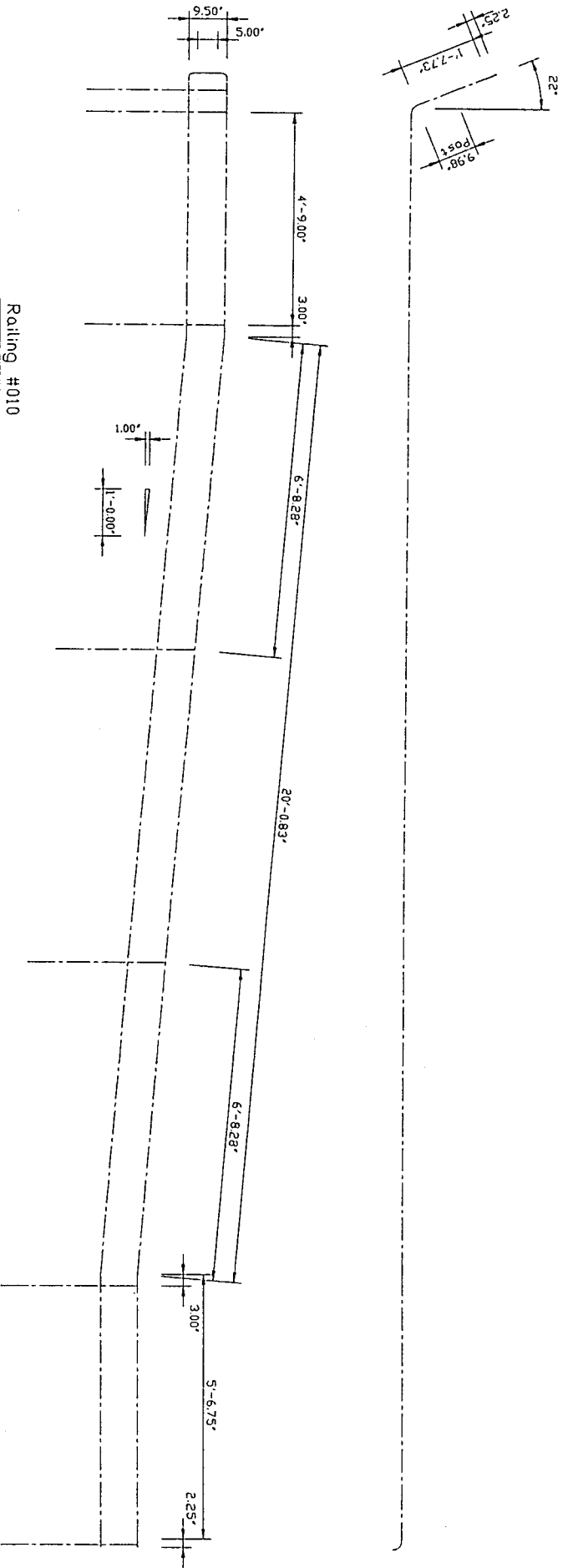


Railing #005
 f_r_r005.dwg

SIZE	GAGE NO.	Foster Project		REV
A	CEN-PP-DP-V	Wing Dam Accessibility Ramp		
SCALE	FILENAME:	East Ramp-Railing #005, #0	SHEET	
1/4"=1'0"	f_r_pr23.dwg	12	OF	15
				I
				J80895

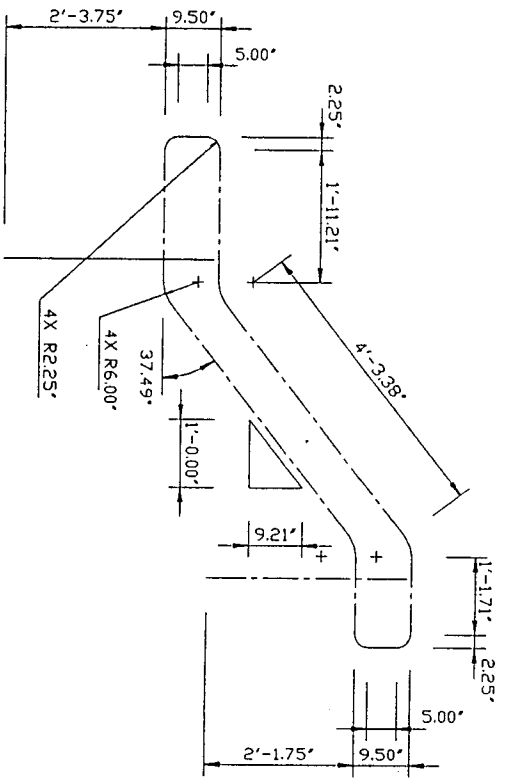


Railing #012
f_r_r012.dwg

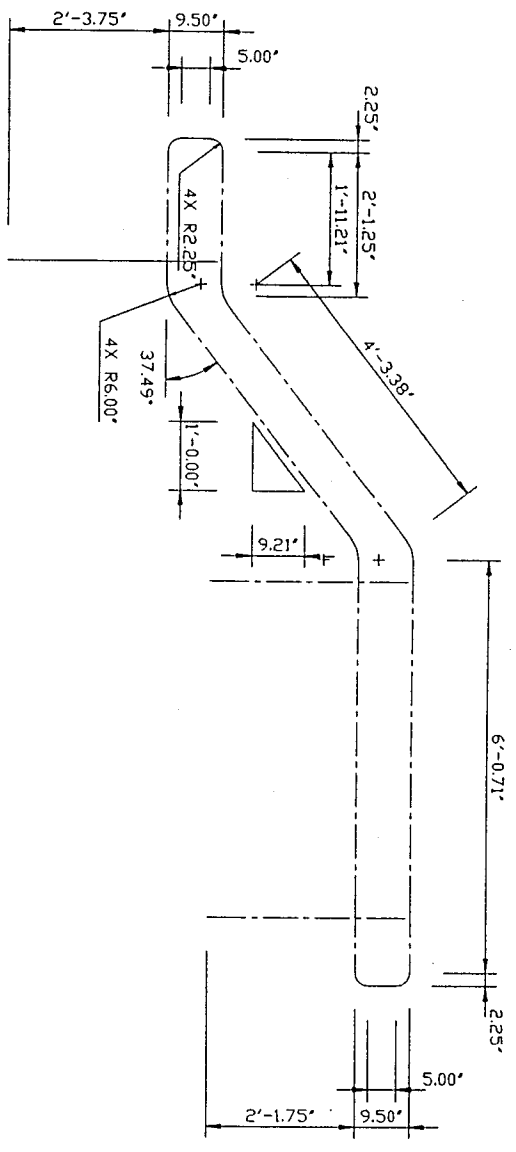


Railing #010
f_r_r010.dwg

SIZE	GAGE NO.	Foster Project		REV
A	CEN-PP-DP-V	Wing Dan Accessibility Ramp		
SCALE	FILENAME:	East Ramp-Railing #010, #01	SHEET	13 OF 15
1/4"=1'0"	f_r_r010.dwg		Dr.	.30895



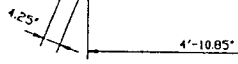
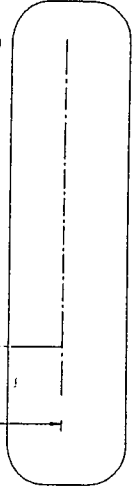
Railing #014
f_r_r014.dwg



Railing #013
f_r_r013.dwg

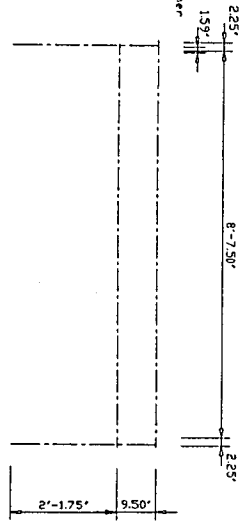
SIZE	GAGE NO.	Foster Project		REV
A	CEN-PP-DP-V	Wing Dam Accessibility Ramp		
SCALE	FILENAME:	East Ramp-Railing #013, #01		
1/4"=1'0"	f_r_r013.dwg	SHEET	14 OF 15	DR
				30895

Railing #014



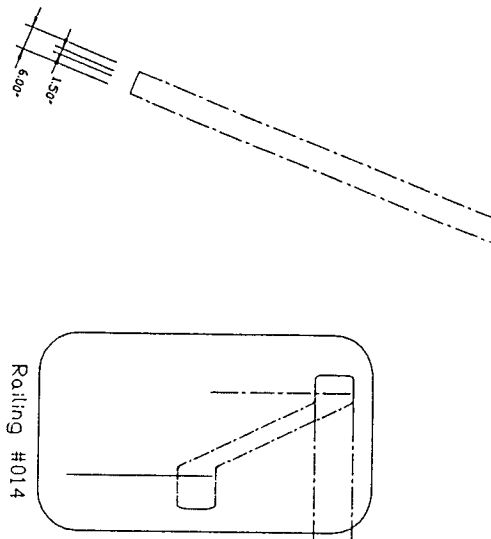
- Note:
- 1) Railing section #015 is similar to #006, #008, and #009 on the East Ramp
 - 2) Left and Right posts and sleep corners are included on railing assemblies #008 and #012

Offset due to post centered on steep corner

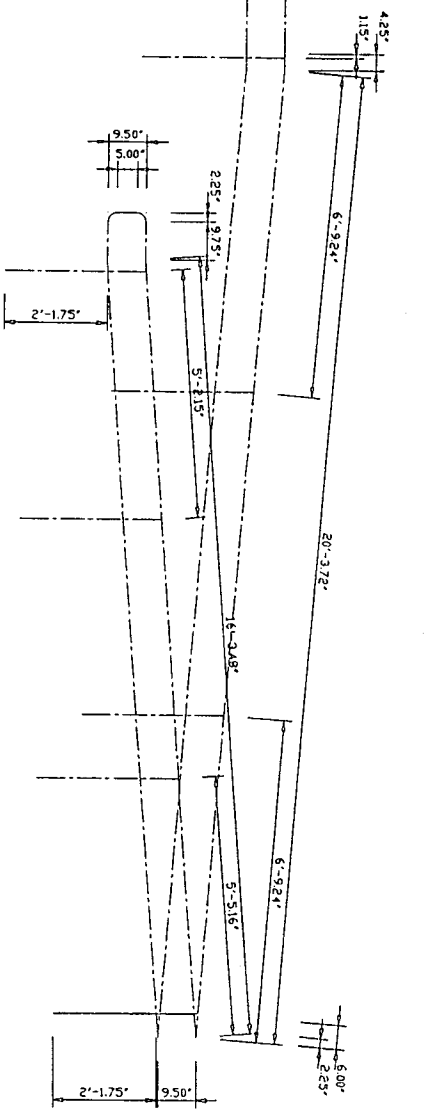


Railing #015

f_r_r_015.dwg



Railing #014



Railing #011

f_r_r_011.dwg

SIZE	GAGE NO.	FILENAME:	SHEET	OF	REV
A	CEN-PP-DP-V	f_r_r_pr26.dwg	15	15	J80895
Foster Project Wing Dam Accessibility Ramp East Ramp-Railing #011, #01					
SCALE	1/4"=1'-0"				

Challenge Cost-Sharing Agreement
between Portland District, COE,
The Oregon Paralyzed Veterans of America and
The Oregon Department of Fish and Wildlife

FINANCIAL WORK SHEET

Project Title: Wing Dam Accessibility Ramp and Fishing Platform

Location: Foster Dam, Oregon

Proposed date of work: 1 February 1996 through 30 June 1996

Project Description: Six segments or approximately 140 linear feet of concrete ramp approximately 5 feet in width, six concrete landings approximately 6 feet by 10 feet, and one 12 foot by 24 foot concrete fishing platform, fabricated steel guardrails and treated wood wheel stops constructed in accordance with the Foster Project: Wing Dam Accessibility Ramp and Fishing Platform design drawings dated 9 August 1995.

Partners: Oregon Paralyzed Veterans of America
16079 S.E. McLoughlin Blvd.
Milwaukie, Oregon 97267-4649
POC: Don Darland 503-394-2305

Oregon Department of Fish and Wildlife
Fish Restoration and Enhancement Program
P.O. Box 59
Portland, Oregon 97207
POC: Dennis Wise, R&E Coordinator 503-229-5410 #352

	Corps	Partners
Salaries	9,740.00	
Volunteer Labor (@ \$4.25/hr)		1,020.00
Contract Services "concrete"		13,892.00
Equipment use	1,500.00	
Materials and Supplies	1,487.42	
Total	\$12,727.42 (47%)	\$14,912.00 (53%)

Total Project Cost: \$27,639.42