

United States
Department of
Agriculture

Natural
Resources
Conservation
Service



OKLAHOMA Personnel Directory

OKLAHOMA PERSONNEL DIRECTORY

EEO Statement
(Revised July 2005)

The U.S. Department of Agriculture (USDA) prohibits discrimination in all its programs and activities on the basis of race, color, national origin, age, disability, and where applicable, sex, marital status, familial status, parental status, religion, sexual orientation, genetic information, political beliefs, reprisal, or because all or a part of an individual's income is derived from any public assistance program. (Not all prohibited bases apply to all programs.) Persons with disabilities who require alternative means for communication of program information (Braille, large print, audiotape, etc.) should contact USDA's TARGET Center at (202) 720-2600 (voice and TDD). To file a complaint of discrimination write to USDA, Director, Office of Civil Rights, 1400 Independence Avenue, S.W., Washington, D.C. 20250-9410 or call (800) 795-3272 (voice) or (202) 720-6382 (TDD). USDA is an equal opportunity provider and employer.

OKLAHOMA PERSONNEL DIRECTORY

Table of Contents

EEO Statement.....	ii
Table of Contents	iii
Directory Content	iv
State Office.....	1
USDA / OCIO Information Technology Services – Oklahoma Staff	6
Field Service Centers and Conservation District Offices.....	7
Administrative and Technical Support Offices.....	36
Resource Conservation and Development Offices.....	41
Tribal Liaison Office.....	42
Appendix A - Organization Chart.....	43
Appendix B - Administrative Map	44
Appendix C - Order of Succession	45
Appendix D - Boards and Committees	46
Appendix E - Quick Reference	47
Index.....	49

OKLAHOMA PERSONNEL DIRECTORY

Directory Content

While every reasonable effort has been made to ensure the correctness of information contained in this document, errors will inevitably occur.

If any errors are noted you should mark the correction on a copy of the affected page and submit it via FAX to 405-742-1201, attention Harold Kane.

OKLAHOMA PERSONNEL DIRECTORY

State Office

United States Department of Agriculture **405-742-1204** Telephone
Natural Resources Conservation Service, State Office **405-742-1007** TTD
100 USDA Suite 206 **405-742-1201** FAX
Stillwater, OK 74074-2655 **405-742-1214** FAX - Confidential Material

Staff /

Personnel	Title	Telephone
State Conservationists Staff		
Hilliard, Ronald L.	State Conservationist	405-742-1204 405-742-1126 FAX 405-742-1280 Voice Mail
Redding, Becka D.	Secretary to State Conservationist	405-742-1204
Hankins, Sam R.	State Administrative Officer	405-742-1213
Miller, Lanny R.	Assistant State Conservationist (Programs)	405-742-1236 405-334-2927 Mobile 405-742-1288 FAX
O'Neill, Gary L.	Assistant State Conservationist (Operations)	405-742-1220 405-334-2925 Mobile
Parker, Jasper T.	Assistant State Conservationist (Outreach / Civil Rights)	405-742-1243 405-334-2932 Mobile
Porter, Billy R.	Assistant State Conservationist (Water Resources)	405-742-1206 405-334-2924 Mobile
Wood II, James D.	Assistant State Conservationist (Field Operations) for Zone 1	405-742-1277 405-334-2931 Mobile
Guerrero, Gilbert F.	Assistant State Conservationist (Field Operations) for Zone 2	405-742-1207 405-743-9608 Mobile
Stewart, Teresa D.	Assistant State Conservationist (Field Operations) for Zone 3	405-742-1216 405-334-2764 Mobile
Vongkhamdy, Phoukham	Assistant State Conservationist (Field Operations) for Zone 4	405-742-1215 405-334-1342 Mobile
Hasenmyer, Sarah F.	Management Analyst	405-742-1228
Kane, Harold C.	Data Management Splst. (Part-time)	405-742-1231

OKLAHOMA PERSONNEL DIRECTORY

State Office (Cont'd)

Staff / Personnel	Title	Telephone
Administrative Staff		
Hankins, Sam R.	State Administrative Officer	405-742-1213
<u>Financial Management</u>		
Sites, Cassandra L.	Budget Officer	405-742-1219
Cole, Gerry L.	Budget Analyst	405-742-1217
Roach, Merrie S.	Fiscal Technician	405-742-1237
Townsley, Jody G.	Fiscal Technician	405-742-1285 405-742-1129 FAX
<u>Human Resources</u>		
Garabedian, Linda D.	Human Resources Specialist	405-742-1210
Goodwin, Babette B.	Human Resources Specialist	405-742-1211
Ruark, Debra R.	Human Resources Assistant	405-742-1212
Lockwood, Sara L.	Student Trainee – Soil Conserv.	405-742-1209 405-742-1214 FAX
<u>Management Services</u>		
Gardner, Renee I.	Contract Specialist	405-742-1224
Neal, Birdie D.	Purchasing Agent	405-742-1225
Vacant	Contract Specialist	405-742-1226 405-742-1295 FAX
<hr/>		
Ecological Sciences and Conservation Planning Staff		
Matlock, Kenneth E.	State Resource Conservationist	405-742-1241 405-334-3790 Mobile
Hickman, Rebecca L.	Secretary	405-742-1233
Eckroat, Jack A.	Resource Conservationist	405-742-1283
Glasgow, Steven J.	Grazing Land Specialist	405-742-1235
Mustain, John W.	State Forester / Agronomist	405-742-1221
Tully, Stephen R.	Biologist	405-742-1239
Martin, Phillip J.	Student Trainee – Range Mgmt.	405-742-1233
Fritzler, Harry L.	Grazing Land Specialist	405-238-6767 x122
Headquartered at:	102 N. Indian Meridian Road Pauls Valley, OK 73075-9236 FAX 405-238-3275	
Janzen, Mark	Plant Materials Specialist	785 823-4595
Headquartered at:	760 South Broadway Salina, KS 67401-4642	

OKLAHOMA PERSONNEL DIRECTORY

State Office (Cont'd)

Staff / Personnel	Title	Telephone
Engineering Staff		
Stoner, J. Chris	State Conservation Engineer	405-742-1260 405-334-2926 Mobile
Fitzpatrick, Connie L.	Secretary	405-742-1256
Cosyleon, Severo G.	Design Staff Head	405-742-1270
Bredesen, Brian B.	Civil Engineering Technician	405-742-1266
Colvin, Charlie G.	Agricultural Engineer	405-742-1259
Cook, Kevin R.	Civil Engineer	405-742-1257
Glasgow, Valerie G.	Agricultural Engineer	405-742-1112
Lane, Andrea R.	Civil Engineering Technician	405-742-1218
Miller, Glen B.	Geologist	405-742-1258
Vacant	Design Engineer (Multi-State)	405-742-1269
Potter, Tracy R.	Civil Engineering Technician	405-742-1268
Sand, Heath A.	Design Engineer	405-742-1262
Slowik, Victor W.	Design Engineer	405-742-1272
Soukup, Cambra K.	Range Technician (Student Trainee)	405-742-1256
Schlegel, N. Rick Headquartered at:	Agricultural Engineer 4900 Oklahoma Ave, Suite 300 Woodward, OK 73801-3713 FAX 580-256-3859	580-256-5320 x120
Programs Staff		
Miller, Lanny R.	Assistant State Conservationist (Programs)	405-742-1236 405-334-2927 Mobile
Mustain, Joni S.	Program Assistant	405-742-1238
Collier, Suzanne A.	Resource Conservationist	405-742-1234
Zetterberg, Richard D.	Resource Consvst (Programs)	405-742-1208 405-612-5491 Mobile 405-742-1288 FAX
Barner, Steve L. Headquartered at:	WRP Specialist 1 st National Center, Suite 115 McAlester, OK 74501-5053 Mobile 405-742-0580 FAX 918-423-1542	918-423-8730

OKLAHOMA PERSONNEL DIRECTORY

State Office (Cont'd)

Staff / Personnel	Title	Telephone
Public Affairs Staff		
O'Neill, Gary L.	Point of Contact	405-742-1220
Daniel, Terri B.	Visual Information Specialist	405-742-1244
<hr/>		
Soil Science Staff		
Ford, Jimmy G.	State Soil Scientist	405-742-1247 405-334-3790 Mobile
Scott, Gregory F.	Asst. State Soil Scientist / GIS Mgr.	405-742-1249
<hr/>		
<u>Geographic Information Systems</u>		
Adams, Julie A.	Cartographer	405-742-1250
Ferguson, Larry D.	Cartographic Technician	405-742-1115
Roberts, Shirley K.	Cartographer	405-742-1113
<hr/>		
Water Resources Staff		
Porter, Billy R.	Assistant State Conservationist (Water Resources)	405-742-1206 405-334-2924 Mobile
Tillman, Bobby L.	Water Resources Coordinator	405-742-1223
Kaiser, Sharon G.	Secretary	405-742-1245
Burns, April D.	Agricultural Economist	405-742-1284
Caldwell, Larry W.	Water Resource Specialist	405-742-1254 405-742-1287 FAX
Elsener, Steven P.	Biologist	405-742-1227
Kersten, Ted D.	Civil Engineer	405-742-1275
Kraft, K. C.	Archaeologist	405-742-1271
Lane, Richard L.	Civil Engineer	405-742-1205
Townsley, George K.	Agricultural Economist	405-742-1267
Utle, Gary W.	Hydraulic Engineer	405-742-1229
<hr/>		
Zone Administrative Staff		
Headquartered at the Oklahoma State Office		
Hungerford, Shelley G.	Administrative Assistant	405-742-1232 405-742-1286 FAX (Confidential)

OKLAHOMA PERSONNEL DIRECTORY

State Office (Cont'd)

**Office Name / Address /
Personnel**

Title

Telephone

Oklahoma Conservation Commission Employees

Headquartered at the Oklahoma State Office

Stewart, Janet M.

Landrights Attorney

405-742-1240

405-742-1201 FAX

USDA/NRCS Liaison Office

Langston University

Agriculture Research Education and Extension Bldg., Room 148 (PO Box 846)

Langston, OK 73050

405-466-2909 FAX

Guy, Dwight N.

Agricultural Liaison Officer

405-466-6124

OKLAHOMA PERSONNEL DIRECTORY

USDA / OCIO Information Technology Services – Oklahoma Staff

Personnel	Headquarters / Address	Title	FAX / Telephone	Mobile phone
<p style="text-align: center;">Oklahoma State Office 100 USDA, Suite 206 Stillwater, OK 74074-2655</p>				
			405-742-1289 FAX	
Walker, Lou Ann		Group Manager	405-742-1230	405-334-1998
Cook, Shelia		IT Specialist	405-742-1165	
Ernce, Janell		IT Specialist	405-742-1021	
Sauer, Lisa		IT Specialist	405-742-1170	
<p style="text-align: center;">Antlers Field Service Center 510 Highway 271 N. Antlers, OK 74523-0190</p>				
			580-298-3480 FAX	
Lawless, Tammy G.		IT Specialist	580-298-3281 x113	
<p style="text-align: center;">Clinton Technical Service Office 517 Prairie Chief Clinton, OK 73601-2439</p>				
			580-323-6131 FAX	
Corbin, Wanelda I.		IT Specialist	580-323-2580	
<p style="text-align: center;">Lawton Field Service Center 1606 N.W. Lawton Lawton, OK 73507-3867</p>				
			580-355-4306 FAX	
Stafford, Donna M.		IT Specialist	580-353-2115 x114	
<p style="text-align: center;">Okmulgee Field Service Center 719 E 8th, Suite D Okmulgee, OK 74447-0548</p>				
			918-756-0716 FAX	
Cline, Joey		IT Specialist	918-756-0850 x107	
<p style="text-align: center;">Pauls Valley Field Service Center 105 N. Indian Meridian Pauls Valley, OK 73075-4218</p>				
			405-238-3117 FAX	
McNeely, Pamela D.		IT Specialist	405-238-6767 x135	

OKLAHOMA PERSONNEL DIRECTORY

Field Service Centers and Conservation District Offices

Office Name / Address /

Personnel

Title

Telephone

Ada Field Service Center

1328 Craddock Road
Ada, OK 74820

580-332-3905

580-332-5671 FAX

Serving Pontotoc County & Pontotoc County Conservation District

NRCS Employees

Horton, Clay J.	Acting District Conservationist	580-332-3905 x110
Chaffin, Bob P.	Soil Conservation Technician	580-332-3905 x111
Horton, Clay J.	Tribal Resource Conservationist	580-332-3905 x3

District Employees

Brooks, Kathy F.	District Secretary	580-332-7979 x101
Moore, Melissa J.	District Manager	580-332-7979 x101

Altus Field Service Center

3100 N. Main, Suite A
Altus, OK 73521-1305

580-482-4312

580-482-6243 FAX

Serving Jackson County & Jackson County Conservation District

NRCS Employees

Riley, Stacy M.	District Conservationist	580-482-4312 x114
Fleharty, Clint E.	Soil Conservationist	580-482-4312 x112
Warren, Ronnie J.	Soil Conservation Technician	580-482-4312 x111

District Employees

Dimitratos, Belinda	District Secretary	580-482-4312 x191
---------------------	--------------------	-------------------

Alva Field Service Center

927 W. Oklahoma Blvd
Alva, OK 73717-2627

580-327-3136

580-327-3516 FAX

Serving Woods County & East Woods County Conservation District

NRCS Employees

Oliphant, Shelly D.	District Conservationist	580-327-3136 x 22
Lohmann, Jay M.	Soil Conservation Technician	580-327-3136 x 21

District Employees

Maddox, Reva	District Programs Coordinator	580-327-0218 x 19
--------------	-------------------------------	-------------------

OKLAHOMA PERSONNEL DIRECTORY

Field Service Centers and Conservation District Offices

Office Name / Address /

Personnel

Title

Telephone

Anadarko Field Service Center

1001 W. Petree Road
Anadarko, OK 73005

405-247-3303

405-247-2060 FAX

Serving Caddo County & South Caddo County Conservation District

NRCS Employees

Whaley, Danielle D.	District Conservationist	405-247-3303 x102
Burks, Robert S.	Soil Conservation Technician	405-247-3303 x116
Elder, Brad D.	Soil Conservationist	405-247-3303 x118
Price, Jerrod T.	Soil Conservation Technician	405-247-3303 x115

Pauls Valley Watershed Construction Office Employees Headquartered at Anadarko

Washburn, Curtis L.	Agricultural Engineer	405-247-3303 x3
---------------------	-----------------------	-----------------

District Employees

Nation, Diane	District Secretary	405-247-3747 x101
Allen, Christopher L.	District Manager	405-247-3747 x101

Antlers Field Service Center

510 Highway 271 N. (PO Box 190)
Antlers, OK 74523-0190

580-298-3281

580-298-3480 FAX

Serving Pushmataha County & Pushmataha County Conservation Dist.

NRCS Employees

Ward, Cynthia D.	District Conservationist	580-298-3281 x108
------------------	--------------------------	-------------------

District Employees

McDaniel, Latresia	District Secretary	580-298 3668 x101
Corgill, Johnny	District Equipment Manager	580-298 3668 x101

Ardmore Field Service Center

39 N. Washington, Suite 109
Ardmore, OK 73401-7056

580-223-7277

580-226-7841 FAX

Serving Carter County & Arbuckle Conservation District

NRCS Employees

Williams, James S.	District Conservationist	580-223-7277
Johnson, Randy L.	Soil Conservation Technician	580-223-7277

District Employees

Mills, Joyce L.	District Programs Coordinator	580-223-5865
-----------------	-------------------------------	--------------

OKLAHOMA PERSONNEL DIRECTORY

Field Service Centers and Conservation District Offices

Office Name / Address /

Personnel

Title

Telephone

Arnett Field Service Center

155 E. Renfrow (PO Box 298)
Arnett, OK 73832

580-885-7244

580-885-7381 FAX

Serving Ellis County & Ellis County Conservation District

NRCS Employees

Howard, Terrell D.
Dunham, Royce D.

District Conservationist
Office Assistant (Engr/Design)

580-885-7244 x108

580-885-7244 x109

District Employees

Bryan, Whitney J.

District Secretary

580-885-7244 x101

Atoka Field Service Center

2341 S. Mississippi
Atoka, OK 74525

580-889-2554

580-889-7705 FAX

Serving Atoka County & Atoka County Conservation District

NRCS Employees

Mathis, Stacey H.
Parham, Paul D.

District Conservationist
Soil Conservation Technician

580-889-2554 x111

580-889-2554 x112

District Employees

Bradford, Glenna

District Programs Coordinator

580-889-5615 x191

Beaver Field Service Center

106 W. First (PO Box 146)
Beaver, OK 73932-0146

580-625-3302

580-625-4931 FAX

Serving Beaver County & Beaver County Conservation District

NRCS Employees

Manley, Carri A.
Van Wyk, Michael L.

District Conservationist
Soil Conservationist

580-625-3302 x109

580-625-3302 x110

District Employees

Newman, Marilyn

District Secretary

580-625-3813 x101

OKLAHOMA PERSONNEL DIRECTORY

Field Service Centers and Conservation District Offices

Office Name / Address /

Personnel

Title

Telephone

Boise City Field Service Center

210 S. Cimarron (PO Box 1086)

Boise City, OK 73933-1086

580-544-2401

580-544-3342 FAX

Serving Cimarron County & Cimarron County Conservation District

NRCS Employees

Brown, Cherrie G.

District Conservationist

580-544-2401 x102

Whited, Kiley R.

Rangeland Mgmt. Specialist

580-544-2401 x112

405-743-9437 Mobile

District Employees

Imler, Iris

District Secretary

580-544-3048 x101

Belford, Jim

District Employee

580-544-3048 x113

Bristow Field Service Center

128 E. 3rd

Bristow, OK 74010-3449

918-367-2113

918-367-2196 FAX

Serving Creek County & Creek County Conservation District

NRCS Employees

Jones, Nicholas W.

District Conservationist

918-367-2113 x104

Zarek, Amanda M.

Soil Conservation Technician

918-367-2113 x3

Oliver, Melanie D.

Tribal Resource Conservationist

918-367-2113 x102

District Employees

Boswell, Teresa D.

District Secretary

918-367-1012 x101

Buffalo Field Service Center

2 Miles Addition (PO Box 353)

Buffalo, OK 73834

580-735-2033

580-735-2536 FAX

Serving Harper County & Harper County Conservation District

NRCS Employees

McGough, David L.

District Conservationist

580-735-2033 x102

West, Rylan J.

Soil Conservationist

580-735-2033 x117

Cook, Roy W.

Soil Conservation Technician

580-735-2033 x107

District Employees

Richard, Christina

District Secretary

580-735-2418 x101

Luckie, Patricia A.

District Manager

580-735-2418 x3

OKLAHOMA PERSONNEL DIRECTORY

Field Service Centers and Conservation District Offices

Office Name / Address /

Personnel

Title

Telephone

Chandler Field Service Center

201 N. Sandy Lane
Chandler, OK 74834

405-258-1405

405-258-1237 FAX

Serving Lincoln County & Lincoln County Conservation District

NRCS Employees

Stinchcomb Jr, Joe E.

District Conservationist

405-258-1405 x107

Fowler, Dennis E.

Soil Conservation Technician

405-258-1405 x108

Lovekamp, Jeremy I.

Soil Conservationist

405-258-1405 x109

District Employees

Soderstrom, Tricia K.

District Secretary

405-258-5011 x101

Checotah Field Office

323-B W. Lafayette
Checotah, OK 74426-3815

918-473-6217

Serving McIntosh County & Checotah Conservation District

District Employees

Courtwright, Kathryn

District Secretary

918-473-6217

Cherokee Field Service Center

401 W. Cherokee, Suite C
Cherokee, OK 73728-3908

580-596-2625

580-596-2467 FAX

Serving Alfalfa County & Alfalfa County Conservation District

NRCS Employees

Dotson, Robert D.

District Conservationist

580-596-2625 x106

Hill, Robert C.

Soil Conservation Technician

580-596-2625 x107

Thielke, Matthew A.

Soil Conservationist

580-596-2625 x107

Turner, Denise B.

Grazing Land Specialist

580-596-2625 x108

District Employees

Puffenbarger, Kayla J.

District Secretary

580-596-2625 x101

Fields, Grayson L.

District Conservation Technician

580-596-2625 x101

OKLAHOMA PERSONNEL DIRECTORY

Field Service Centers and Conservation District Offices

Office Name / Address /

Personnel

Title

Telephone

Cheyenne Field Service Center

321 W. Broadway (PO Box 410)

Cheyenne, OK 73628-0410

580-497-2293

580-497-2313 FAX

Serving Roger Mills County & Upper Washita Conservation District

NRCS Employees

Allen, Gregory C.

District Conservationist

580-497-2293 x108

Boerngen, Laurie A.

Rangeland Mgmt. Specialist

580-497-2293 x3

Swartwood, Jerry W.

Soil Conservation Technician

580-497-2293 x110

District Employees

Wells, Nena

District Manager

580-497-3413 x101

Goodall, Todd

District Engineering Aide

580-497-3413 x3

Chickasha Field Service Center

828 W. Choctaw Ave.

Chickasha, OK 73018-2310

405-224-1381

405-222-0032 FAX

Serving Grady County & Grady County Conservation District

NRCS Employees

Walker, Kim R.

District Conservationist

405-224-1381 x101

Shotts, Kevin N.

Soil Conservation Technician

405-224-1381 x106

District Employees

Surber, Dee

District Programs Coordinator

405-224-0523 x103

Burrows, Jeremy

District Engineering Aide

405-224-1381 x3

Claremore Field Service Center

1900 W. Will Rogers Circle, Suite C

Claremore, OK 74017

918-341-3276

918-341-1885 FAX

Serving Rogers County & Rogers County Conservation District

NRCS Employees

Colwell, N. Cord

District Conservationist

918-341-3276 x103

Davis, Clayton P.

Soil Conservation Technician

918-341-3276 x108

District Employees

White, Jean

District Secretary

918-341-4147 x101

Owen, Keith

District Manager

918-341-4147 x3

OKLAHOMA PERSONNEL DIRECTORY

Field Service Centers and Conservation District Offices

Office Name / Address /

Personnel

Title

Telephone

Clinton Field Service Center

1508 Neptune Drive, Suite 1
Clinton, OK 73601-9706

580-323-0366

580-323-6469 FAX

Serving Custer County & Custer County Conservation District

NRCS Employees

Kelley, Gary Steve
Bradford, Cleaon
Moore, Joshua, F.

District Conservationist

580-323-0366 x111

Soil Conservationist

580-323-0366 x3

Soil Conservation Technician

580-323-0366 x109

District Employees

Gerhardt, Cindy

District Secretary

580-323-4875 x101

Coalgate Field Service Center

6 E. Lafayette, Suite C
Coalgate, OK 74538-2651

580-927-2182

580-927-3765 FAX

Serving Coal County & Coal County Conservation District

NRCS Employees

Wright, Russell A.
Campbell, Eddie P.

District Conservationist

580-927-2182

Soil Conservation Technician

580-927-2182

District Employees

Williams, Melissa
Langston, Rodger D.

District Secretary

580-927-3414

District Equipment Manager

580-927-3414

Cordell Field Service Center

1505 N. Glenn English
Cordell, OK 73632-1405

580-832-3275

580-832-2434 FAX

Serving Washita County & Washita County Conservation District

NRCS Employees

Schmidt, Ronald E.
Thomas, Tara R.
Ulrich, Joseph E.

District Conservationist

580-832-3275 x115

Soil Conservationist

580-832-3275 x116

Soil Conservation Technician

580-832-3275 x117

District Employees

Brown, Edith

District Secretary

580-832-3719 x101

OKLAHOMA PERSONNEL DIRECTORY

Field Service Centers and Conservation District Offices

Office Name / Address /

Personnel

Title

Telephone

Dewey Field Service Center

205 E. 12th
Dewey, OK 74029

918-534-2720

918-534-3931 FAX

Serving Washington County & Caney Valley Conservation District

NRCS Employees

Dixon, James R.
Patrick, Russell D.

District Conservationist
Soil Conservation Technician

918-534-2720 x101

918-534-2720 x102

District Employees

Day, Alyson

District Secretary

918-534-3392 x100

Duncan Field Service Center

3901 West Beech
Duncan, OK 73533

580-255-7676

580-252-7081 FAX

Serving Stephens County & Stephens County Conservation District

NRCS Employees

Davis, Dana L.
Owens, James C.
Evans III, Lloyd R.

District Conservationist
Soil Conservation Technician
Soil Conservationist

580-255-7676 x108

580-255-7676 x109

580-255-7676 x110

District Employees

Marshall, Alisa

District Secretary

580-255-5798 x101

Durant Field Service Center

2704 N. First Ave, Suite A
Durant, OK 74701-2509

580-924-4131

580-920-0228 FAX

Serving Bryan County & Bryan Conservation District

NRCS Employees

May, Paul A.
Wingfield, Randall C.

District Conservationist
Soil Conservation Technician

580-924-4131 x113

580-924-4131 x111

District Employees

Burkhalter, Donna L.
Nelson, Brad

District Programs Coordinator
District Equipment Manager

580-924-5464 x101

580-924-5464 x101

OKLAHOMA PERSONNEL DIRECTORY

Field Service Centers and Conservation District Offices

Office Name / Address /

Personnel

Title

Telephone

EI Reno Field Service Center

1625 E. Hwy. 66
EI Reno, OK 73036-5769

405-262-1958

405-422-2066 FAX

Serving Canadian County & East Canadian County Conservation District

NRCS Employees

Crider, J. Duane

District Conservationist

405-262-1958 x106

Hood, Larry R.

Soil Conservationist

405-262-1958 x108

Owen, Nick R.

Soil Conservation Technician

405-262-1958 x109

District Employees

Rushing, Lynda

District Secretary

405-262-7388 x101

Enid Field Service Center

1216 W. Willow, Suite D
Enid, OK 73703-2532

580-237-4321

580-237-9536 FAX

Serving Garfield County & Garfield County Conservation District

NRCS Employees

Sheik, Michael J.

District Conservationist

580-237-4321 x25

Betchan, Jay E.

Soil Conservation Technician

405-742-7405-Mobile

580-237-4321 x26

District Employees

Nickel, Sheri

District Secretary

580-237-7880 x24

Skaggs, Jason

District Manager

580-237-7880 x24

Eufaula Field Service Center

Suite 106, 1st Natl Center, Alexander Drive (HC 62, Box 2D)
Eufaula, OK 74432-9601

918-689-2301

918-689-3293 FAX

Serving McIntosh County & McIntosh County Conservation District

NRCS Employees

Worley, Jacob W.

District Conservationist

918-689-2301 x101

Harjo, Shane J.

Soil Conservation Technician

918-689-2301 x102

District Employees

Courtwright, Kathryn

District Secretary

918-689-4040 x100

OKLAHOMA PERSONNEL DIRECTORY

Field Service Centers and Conservation District Offices

Office Name / Address /

Personnel

Title

Telephone

Fairview Field Service Center

225 N. Main
Fairview, OK 73737-1622

580-227-4844
580-227-3061 FAX

Serving Major County and Major County Conservation District

NRCS Employees

Hise, Jon R.
Best, Christopher M.
Walton, Roy J.

District Conservationist
Soil Conservationist
Soil Conservation Technician

580-227-4844 x104
580-227-4844 x3
580-227-4844 x105

District Employees

Bierig, Cindy J.

District Secretary

580-227-4844 x101

Fort Cobb Field Office

PO Box 96
Fort Cobb, OK 73038-0096

405-643-5102
405-643-5102 FAX

Serving Caddo County & West Caddo Conservation District

District Employees

Niece, Rita
Crall, Edward

District Secretary
OCC Education Coordinator

405-643-5102
405-643-5102

Frederick Field Service Center

1120 S. Main
Frederick, OK 73542

580-335-2817
580-335-3764 FAX

Serving Tillman County & Tillman County Conservation District

NRCS Employees

Bennett, Andrew C.
Barnes, Matthew A.
Schreiner, Tony R.

District Conservationist
Soil Conservationist
Soil Conservation Technician

580-335-2817 x113
580-335-2817 x111
580-335-2817 x112

District Employees

Moore, Glenda F.

District Secretary

580-335-3630 x101

Freedom Field Office

403 Main (PO Box 153)
Freedom, OK 73038-0096

580-621-3251
580-621-3251 FAX

Serving Woods County & Woods County Conservation District

District Employees

Munsell, Ky

District Secretary

580-621-3251

OKLAHOMA PERSONNEL DIRECTORY

Field Service Centers and Conservation District Offices

**Office Name / Address /
Personnel**

Title

Telephone

Geary Field Office

129 E Main
Geary, OK 73040-2421

405-884-2383
405-884-2308 FAX

Serving Blaine and Canadian Counties & Central N. Canadian River CD

District Employees

Carnott, Debi J.

District Programs Coordinator

405-884-2383

Oklahoma Conservation Commission Employees

Ramming, Monty

OCC Project Manager

405-884-2383

Guthrie Field Service Center

2227 Iron Mound Dr., Suite B
Guthrie, OK 73044

405-282-1695
405-282-6251 FAX

Serving Logan County & Logan County Conservation District

NRCS Employees

Peterson, J. D'Ann
Rackley, Emmet M.

District Conservationist
Soil Conservation Technician

405-282-1695 x108
405-282-1695 x112

District Employees

Schmidt, Kathy
Freundt, Paul

District Manager
District Equipment Manager

405-282-2363 x101
405-282-2363 x3

Guymon Field Service Center

601 S. E. Fifth (HCR4 Box 120)
Guymon, OK 73942-9804

580-338-7379
580-338-7616 FAX

Serving Texas County & Texas County Conservation District

NRCS Employees

Messenger, Alan R

District Conservationist

580-338-7379 x116
580-651-5625 Mobile

Hill Jr, James L.
Meyer, Bruce E.

Soil Conservation Technician
Rangeland Mgmt. Specialist

580-338-7379 x114
580-338-7379 x113

District Employees

Green, Clancy Jo

District Secretary

580-338-8873 x101

Hinton Field Office

201 E. Main (PO Box 698)
Hinton, OK 73047-0698

405-542-3205
405-542-3231 FAX

Serving Blaine, Caddo & Canadian Counties & North Caddo Cons. Dist.

District Employees

Weathers, Amy

District Secretary

405-542-3205

OKLAHOMA PERSONNEL DIRECTORY

Field Service Centers and Conservation District Offices

Office Name / Address /

Personnel

Title

Telephone

Hobart Field Service Center

802 W. 11th
Hobart, OK 73651-5402

580-726-3347
580-726-3843 FAX

Serving Kiowa County & Kiowa County Conservation District

NRCS Employees

Barnes, Matthew A.	Acting District Conservationist	580-726-3347 x119
Griffith, Grant S.	Soil Conservation Technician	580-726-3347 x3
Wilson, Thomas E.	Soil Conservationist	580-726-3347 x120

District Employees

Morehead, Nicole	District Secretary	580-726-3786 x101
------------------	--------------------	-------------------

Holdenville Field Service Center

419 E. Highway
Holdenville, OK 74848-4057

405-379-3221
405-379-5926 FAX

Serving Hughes County & Hughes County Conservation District

NRCS Employees

Reavis, Manuel Brent	District Conservationist	405-379-3221 x106
Boyd, Oscar B.	Soil Conservation Technician	405-379-3221 x108
McVeigh, Jami B.	Soil Conservationist	405-379-3221 x107

District Employees

Jones, Andrea G.	District Secretary	405-379-2570 x101
------------------	--------------------	-------------------

Hollis Field Service Center

320 N. Main
Hollis, OK 73550-3037

580-688-3456
580-688-2214 FAX

Serving Harmon County & Harmon County Conservation District

NRCS Employees

Teague, Melissa R.	District Conservationist	580-688-3456 x112
Wilson, James R.	Soil Conservation Technician	580-688-3456 x111

District Employees

Smith, Jennifer S.	District Programs Coordinator	580-688-3674 x101
Caswell, Geary	District Employee	580-688-3674 x101

OKLAHOMA PERSONNEL DIRECTORY

Field Service Centers and Conservation District Offices

Office Name / Address /

Personnel

Title

Telephone

Hugo Field Service Center

3521 E. Jackson St.
Hugo, OK 74743

580-326-7516
580-326-2452 FAX

Serving Choctaw County & Kiamichi Conservation District

NRCS Employees

Mendoza, Jose M.	District Conservationist	580-326-7516 x108
Davis, Charles S.	Soil Conservation Technician	580-326-7516 x109
Gaines, MacKenzie D.	Soil Conservationist	580-326-7516 x3

District Employees

Payne, Lisa A.	District Secretary	580-326-7331 x101
Robertson, Greg	District Manager	580-326-7331 x101

Idabel Field Service Center

201 N. Central Ave., Room 124
Idabel, OK 74745-3831

580-286-2574
580-286-2048 FAX

Serving McCurtain County & Little River Conservation District

NRCS Employees

Swift, Kenneth W.	Acting District Conservationist	580-286-2574 x104
Green, James R.	District Conservationist	
	On detail to Afghanistan as an Ag. Advisor through January 2009	
Allen, Gregory D.	Soil Conservation Technician	580-286-2574 x105
Deen, Matthew L.	Soil Conservation Technician	580-286-2574 x111

District Employees

Beck, Karen	District Secretary	580-286-7645 x101
Acker, Frank	District Employee	580-286-7645 x101

OKLAHOMA PERSONNEL DIRECTORY

Field Service Centers and Conservation District Offices

Office Name / Address /

Personnel

Title

Telephone

Jay Field Service Center

319 S. 6th, Suite C (P.O. Box 467)
Jay, OK 74346

918-253-4513

918-253-4160 FAX

Serving Delaware County & Delaware County Conservation District

NRCS Employees

Daniels, Eric W.

District Conservationist

918-253-4513 x107

O'Bryan, Robert C.

Soil Conservation Technician

918-253-4513 x108

Hester, Abrehum N.

Soil Conservationist

918-253-4513 x3

District Employees

Rose, Christine

District Secretary

918-253-4513 x101

Grasso, Sam

District Education / Info. Coord.

918-253-4513 x109

Mefford, Marti

District Employee

918-253-4513 x113

Schneider, Joe

District Employee

918-253-4513 x110

Oklahoma Conservation Commission Employees

Levesque, Gina M.

319 Planner

918-253-4513 x109

Ashbrenner, Jill L.

Education Coordinator / Planner

918-253-4513 x109

Tripp, Trampas W.

Water Quality Specialist

918-253-4513 x109

Rhea, Ashley D.

Intern

918-253-4513 x109

Kingfisher Field Service Center

1600 S. 13th St.
Kingfisher, OK 73750

405-375-3200

405-375-3201 FAX

Serving Kingfisher County & Kingfisher County Conservation District

NRCS Employees

Burns, Brandon K.

District Conservationist

405-375-3200 x101

Lowman, Andrew T.

Soil Conservation Technician

405-375-3200 x117

Langston University Employees

Chandler, Larry

Outreach Specialist

405-375-3200 x3

District Employees

Nowlin, Lea Ann

District Secretary

405-375-5373 x102

Konawa Field Office

102 E. 1st St.
Konawa, OK 74849

580-925-3117

580-925-3117 FAX

Serving Pottawatomie and Seminole Counties & Konawa Cons. District

District Employees

Brooks, Angie

District Secretary

580-925-3117

OKLAHOMA PERSONNEL DIRECTORY

Field Service Centers and Conservation District Offices

Office Name / Address /

Personnel

Title

Telephone

Lawton Field Service Center

1606 NW Lawton Ave
Lawton, OK 73507

580-353-1564

580-355-4306 FAX

Serving Comanche County & Comanche County Conservation District

NRCS Employees

Schreiner, J. Kirk

District Conservationist

580-353-1564 x102

Igo, Russ M.

Soil Conservation Technician

580-353-1564 x103

Winslett, Charles A.

Soil Conservationist

580-353-1564 x104

District Employees

Theis, Becky

District Secretary

580-353-0532 x101

Kuntz, David

District Manager

580-353-0532 x101

Madill Field Service Center

800 Cedar Drive
Madill, OK 73446-1062

580-795-3148

580-795-3227 FAX

Serving Marshall County & Marshall County Conservation District

NRCS Employees

Goedecke, Chris A.

District Conservationist

580-795-3148 x102

Hook Jr, Floyd Winston

Soil Conservation Technician

580-795-3148 x101

District Employees

Gilmore, Ro Jane

District Secretary

580-795-3644 x103

Mangum Field Service Center

116 E. Pierce
Mangum, OK 73554

580-782-2787

580-782-5966 FAX

Serving Greer County & Greer County Conservation District

NRCS Employees

Jones, Ryan K.

District Conservationist

580-782-2787 x103

York, Richard B.

Soil Conservation Technician

580-782-2787 x104

Mangum Field Office

2302 N. Louis Tittle (Rt. 1, Box 91D)
Mangum, OK 73554-9642

580-782-3581

580-782-3581 FAX

District Employees

Gilpatrick, Donna

District Secretary

580-782-3581

OKLAHOMA PERSONNEL DIRECTORY

Field Service Centers and Conservation District Offices

Office Name / Address /

Personnel

Title

Telephone

Marietta Field Service Center

1208 North Highway 77
Marietta, OK 73448

580-276-3201

580-276-4601 FAX

Serving Love County & Love County Conservation District

NRCS Employees

Sanders, Warren R.

District Conservationist

580-276-3201 x104

Balch, Jerry D.

Soil Conservation Technician

580-276-3201 x105

Pool, Kaleb A.

Soil Conservationist

580-276-3201 x3

District Employees

Bone, Betty J.

District Secretary

580-276-3867 x101

Tate, Kyle

District Equipment Manager

580-276-3867 x101

McAlester Field Service Center

200 S. Third, Suite A
McAlester, OK 74501

918-423-4073

918-423-2745 FAX

Serving Pittsburg County & Pittsburg County Conservation District

NRCS Employees

Viles, Sammy L.

District Conservationist

918-423-4073 x101

Wright, Teresa D.

Soil Conservation Technician

918-423-4073 x109

District Employees

Corum, Jennifer

District Secretary

918-423-3990 x111

Hamilton, Brad

District Technician

918-423-3990 x111

Medford Field Service Center

409 S. Front St.
Medford, OK 73759-1709

580-395-2324

580-395-2461 FAX

Serving Grant County & Grant County Conservation District

NRCS Employees

Stephens, Karla R.

District Conservationist

580-395-2324 x107

Cambron, Robert E.

Soil Conservation Technician

580-395-2324 x110

District Employees

Ediger, Judith Lynn

District Secretary

580-395-2146 x101

OKLAHOMA PERSONNEL DIRECTORY

Field Service Centers and Conservation District Offices

Office Name / Address /

Personnel

Title

Telephone

Miami Field Service Center

630 E. Steve Owens, Suite 3
Miami, OK 74354

918-542-4576

918-542-3653 FAX

Serving Ottawa County & Ottawa County Conservation District

NRCS Employees

Ramming, Michael J.
Burnett, Leota A.

District Conservationist
Soil Conservation Technician

918-542-4576 x106

918-542-4576 x107

District Employees

Hudson, Shirley

District Secretary

918-542-6423 x104

Mountain View Field Office

318 Main Street (PO Box 369)
Mountain View, OK 73062

580-347-2220

580-347-2143 FAX

Serving Kiowa and Washita Counties & Mountain View Cons. District

District Employees

Clark, Jo Etta

District Secretary

580-347-2220

Muskogee Field Service Center

3001 Azalea Park Drive
Muskogee, OK 74401

918-682-8831

918-686-0648 FAX

Serving Muskogee County & Muskogee County Conservation District

NRCS Employees

Lester, Christopher
Newton, Jared S.
Worley, Lisel K.

District Conservationist
Soil Conservation Technician
Soil Conservationist

918-682-8831 x110

918-682-8831 x112

918-682-8831 x111

District Employees

Kloeckler, Patricia A.
Qualls, Andrew T.

District Secretary
District Information / Ed. Coord.

918-687-3478 x101

918-687-3478 x101

OKLAHOMA PERSONNEL DIRECTORY

Field Service Centers and Conservation District Offices

Office Name / Address /

Personnel

Title

Telephone

Newkirk Field Service Center

5501 N. Pleasantview
Newkirk, OK 74647

580-362-3362

580-362-2834 FAX

Serving Kay County & Kay County Conservation District

NRCS Employees

Stone, Caleb J.

District Conservationist

580-362-3362

Cink, Steven K.

Soil Conservation Technician

580-362-3362

Martin, Joy N.

Soil Conservationist

580-362-3362

District Employees

Stone, Lonette

District Secretary

580-362-2438

Henning, Susan

District Manager

580-362-2438

Janda, Chris E.

District Equipment Manager

580-362-2438

Norman Field Service Center

2424 Springer, Suite 105 B
Norman, OK 73069

405-321-7766

405-321-0671 FAX

Serving Cleveland County & Cleveland County Conservation District

NRCS Employees

Neumeyer, Donna R.

District Conservationist

405-321-7766 x103

Gay, Don L.

Soil Conservation Technician

405-321-7766 x3

Wright, Tony L.

Soil Conservationist

405-321-7766 x104

District Employees

London-Ward, Christine

District Secretary

405-364-7319 x101

Nowata Field Service Center

123 S. Ash (PO Box 389)
Nowata, OK 74048

918-273-3074

918-273-2436 FAX

Serving Nowata County & Nowata County Conservation District

NRCS Employees

Blasi, Julie R.

District Conservationist

918-273-3074 x111

Patrick, Russell D.

Soil Conservation Technician

918-273-3074 x112

District Employees

Waltman, Brenda

District Manager

918-273-1100 x101

OKLAHOMA PERSONNEL DIRECTORY

Field Service Centers and Conservation District Offices

Office Name / Address /

Personnel

Title

Telephone

Okeene Field Office

218 N. 5th Street (PO Box 387)

Okeene, OK 73763-0387

580-822-3255

580-822-4489 FAX

Serving Blaine and Kingfisher Counties & Cimarron Valley Cons. District

District Employees

Vacant

District Secretary

580-822-3255

Okemah Field Service Center

121 Sertco Road

Okemah, OK 74859

918-623-0077

918-623-9051 FAX

Serving Okfuskee County & Okfuskee County Conservation District

NRCS Employees

Maples, J. Mark

Haynes, Rick G.

District Conservationist

Soil Conservation Technician

918-623-0077 x110

918-623-0077 x111

District Employees

Sexton, Candye

District Secretary

918-623-1932 x101

Oklahoma City Field Service Center

4850 N. Lincoln Blvd., Suite B

Oklahoma City, OK 73105-3315

405-521-1332

405-521-1461 FAX

Serving Oklahoma County & Oklahoma County Conservation District

NRCS Employees

Shaw, Rodney C.

Dukes Jr, Robert

District Conservationist

Soil Conservation Technician

405-521-1332

405-521-1332

District Employees

Inmon, Rebecca

District Secretary

405-524-4450

OKLAHOMA PERSONNEL DIRECTORY

Field Service Centers and Conservation District Offices

Office Name / Address /

Personnel Title Telephone

Okmulgee Field Service Center

719 E. 8th, Suite A

Okmulgee, OK 74447-5508

918-756-0850

918-756-0716 FAX

Serving Okmulgee County & Okmulgee County Conservation District

NRCS Employees

Goedecke, Ronald D.	District Conservationist	918-756-0850 x108
Arnold, LeRoy K.	Soil Conservation Technician	918-756-0850 x112
Bowler, Rishell F.	Soil Conservationist	918-756-0850 x113
Ligons, Lester D.	Tribal Resource Conservationist	918-756-0850 x109

District Employees

Vacant	District Secretary	918-756-8111 x102
--------	--------------------	-------------------

Pauls Valley Field Service Center

105 N. Indian Meridian

Pauls Valley, OK 73075-4218

405-238-6767

405-238-3117 FAX

Serving Garvin County & Garvin County Conservation District

NRCS Employees

Chandler, Brandon K.	District Conservationist	405-238-6767 x110
Mosteller, Jennifer D.	Soil Conservation Technician	405-238-6767 x111
Rogers Jr, Charles C.	Soil Conservationist	405-238-6767 x112

Langston University Employees

Carter, Lovie L.	Outreach Liaison	405-238-6767 x132
------------------	------------------	-------------------

District Employees

Ward, Cindy	District Secretary	405-238-7233 x101
Lyons, Gregory	District Watershed Aide	405-238-7233 x101

Pawhuska Field Service Center

1000 W. Main (Rt. 1 Box 650)

Pawhuska, OK 74056-9801

918-287-3570

918-287-3420 FAX

Serving Osage County & Osage County Conservation District

NRCS Employees

Reavis, Brandon L.	District Conservationist	918-287-3570 x110
Brock, Will M.	Rangeland Mgmt. Specialist	918-287-3570 x112
Collyar, Dean C.	Soil Conservation Technician	918-287-3570 x111

District Employees

Collins, Danna	District Secretary	918-287-3290 x101
Manning, John	District Manager	918-287-3290 x104

OKLAHOMA PERSONNEL DIRECTORY

Field Service Centers and Conservation District Offices

<u>Office Name / Address / Personnel</u>	<u>Title</u>	<u>Telephone</u>
Pawnee Field Service Center		
500 Harrison St., Room 100 Pawnee, OK 74058-2568		918-762-2736 918-762-3321 FAX
	Serving Pawnee County & Pawnee County Conservation District	
<u>NRCS Employees</u>		
Zweiacker, Loran L.	District Conservationist	918-762-2736 x106
Vielma, Jose A.	Soil Conservationist	918-762-2736 x3
Yundt, Martin E.	Soil Conservation Technician	918-762-2736 x108
<u>District Employees</u>		
Holder, Tammie	District Programs Coordinator	918-762-2736 x101
<hr/>		
Perry Field Service Center		
1302 N. Highway 77 Perry, OK 73077-2433		580-336-5597 580-336-5596 FAX
	Serving Noble County & Noble County Conservation District	
<u>NRCS Employees</u>		
Peterson, Russell W.	District Conservationist	580-336-5597 x105
Brorsen, Dennis R.	Soil Conservation Technician	580-336-5597 x3
<u>District Employees</u>		
Sparks, Jolene	District Secretary	580-336-2003 x102
Warren, Wade A.	District Equipment Manager	580-336-2003 x3
<hr/>		
Poteau Field Service Center		
109 Kerr Blvd. (PO Box 547) Poteau, OK 74953-0547		918-647-4800 918-647-4967 FAX
	Serving LeFlore County & LeFlore County Conservation District	
<u>NRCS Employees</u>		
Risenhoover, Kenneth R.	District Conservationist	918-647-4800 x111
Brown, Justin S.	Soil Conservation Technician	918-647-4800 x113
Martin, Tyson J.	Soil Conservation Technician	918-647-4800 x3
Stanford, Amanda R.	Soil Conservationist	918-647-4800 x112
<u>District Employees</u>		
Grey, Lisa	District Programs Coordinator	918-647-3554 x115
Faulkenberry, Brandon	District Manager	918-647-3554 x115

OKLAHOMA PERSONNEL DIRECTORY

Field Service Centers and Conservation District Offices

Office Name / Address /

Personnel

Title

Telephone

Pryor Field Service Center

4238 N. E. 1st (PO Box 36)
Pryor, OK 74362

918-825-3673

918-825-6928 FAX

Serving Mayes County & Mayes County Conservation District

NRCS Employees

Hitch, Kenneth L.
Weaver Jr, William E.

District Conservationist
Soil Conservation Technician

918-825-3673 x106

918-825-3673 x107

District Employees

Edwards, Beverly J.

District Secretary

918-825-0004 x101

Purcell Field Service Center

1726 N. Green, Suite 700
Purcell, OK 73080

405-527-3160

405-527-0872 FAX

Serving McClain County & McClain County Conservation District

NRCS Employees

Crouch, Carol V.
Gay, Don L.

District Conservationist
Soil Conservation Technician

405-527-3160 x108

405-527-3160 x109

District Employees

Christian, Patti

District Secretary

405-527-3452 x101

Sallisaw Field Service Center

2606 S. Kerr Blvd. (PO Box 1522)
Sallisaw, OK 74955

918-775-6577

918-775-8925 FAX

Serving Sequoyah County & Sequoyah County Conservation District

NRCS Employees

Fenton, Audra Q.

District Conservationist

918-775-6577

District Employees

Fentress, Pat R.

District Secretary

918-775-3045

OKLAHOMA PERSONNEL DIRECTORY

Field Service Centers and Conservation District Offices

**Office Name / Address /
Personnel**

Title

Telephone

Sayre Field Service Center

802 C N. E. Highway 66
Sayre, OK 73662

580-928-3113
580-928-3613 FAX

Serving Beckham County & North Fork of Red River Cons. District

NRCS Employees

Benton, Mark W.
Passmore Jr, Giles D.
Rogers, Douglas W.

District Conservationist
Soil Conservationist
Soil Conservation Technician

580-928-3113 x115
580-928-3113 x114
580-928-3113 x3

District Employees

Tucker, Nelda J.

District Secretary

580-928-9950 x113

Shawnee Field Service Center

201 N. Bell, Room 109
Shawnee, OK 74801-6940

405-273-2076
405-273-1746 FAX

Serving Pottawatomie County & Shawnee Conservation District

NRCS Employees

Fleming, Shawn D.
Guy, Stephanie L.
Lynch, Robin L.

District Conservationist
Soil Conservationist
Soil Conservation Technician

405-273-2076 x101
405-273-2076 x100
405-273-2076 x102

Shawnee Field Office

127 N. Park
Shawnee, OK 74801

405-275-5220
405-273-3606 FAX

District Employees

Gordon, Julie A.

District Secretary

405-275-5220

Stigler Field Service Center

1005 W. Main, Suite D
Stigler, OK 74462-2703

918-967-2488
918-967-2602 FAX

Serving Haskell County & Haskell County Conservation District

NRCS Employees

Neumeyer, J. Thomas
Johnson, Robert Artie
Jones, Timothy D.

District Conservationist
Soil Conservation Technician
Soil Conservationist

918-967-2488 x101
918-967-2488 x104
918-967-2488 x3

District Employees

Goff, Kimberly

District Secretary

918-967-8608 x100

OKLAHOMA PERSONNEL DIRECTORY

Field Service Centers and Conservation District Offices

**Office Name / Address /
Personnel**

Title

Telephone

Stillwater Field Service Center

2600 S. Main, Suite C
Stillwater, OK 74074

405-372-7071
405-372-7208 FAX

Serving Payne County & Payne County Conservation District

NRCS Employees

Hungerford, David M.	District Conservationist	405-372-7071 x114
Ellis, James D.	Soil Conservation Technician	405-372-7071 x115
Ehlers, Kim C.	Soil Conservationist	405-372-7071 x112

District Employees

Anderson, Doris J.	District Secretary	405-372-7201 x102
Kuhn, Jeff	District Manager	405-372-7201 x3

Stilwell Native American Service Center

920 S. 2nd Street
Stilwell, OK 74960

918-696-7612
918-696-6114 FAX

Serving Adair County & Adair County Conservation District

NRCS Employees

Inman, Andrew R.	District Conservationist	918-696-7612
Bagby, Robert N.	Soil Conservation Technician	918-696-7612
Lawrence, Anthony R.	Soil Conservationist	918-696-7612

District Employees

Miggetto, Juanita C.	District Programs Coordinator	918-696-3563
----------------------	-------------------------------	--------------

Oklahoma Conservation Commission Employees

Mitchell, Tashina C.	OCC Project Coordinator	918-696-7612
Starkey, Jerry G.	OCC Conservation Plan Writer	918-696-7612

Sulphur Field Service Center

4000 West Highway 7
Sulphur, OK 73086

580-622-3913
580-622-3249 FAX

Serving Murray County & Murray County Conservation District

NRCS Employees

Cline, Bobby J.	District Conservationist	580-622-3913
-----------------	--------------------------	--------------

District Employees

Curry, Tammy	District Secretary	580-622-2724
--------------	--------------------	--------------

OKLAHOMA PERSONNEL DIRECTORY

Field Service Centers and Conservation District Offices

Office Name / Address /

Personnel

Title

Telephone

Tahlequah Field Service Center

918 West Choctaw

Tahlequah, OK 74464-3414

918-456-1924

918-456-3147 FAX

Serving Cherokee County & Cherokee County Conservation District

NRCS Employees

Ware, Dennis K.

District Conservationist

918-456-1924 x112

Schoolfield, Paul L.

Soil Conservation Technician

918-456-1924 x116

District Employees

Murphy, Jacy

District Programs Coordinator

918-456-1919 x101

Oklahoma Conservation Commission Employees

Farris, Bullit M.

OCC Conservation Plan Writer

918-456-1924

Talihina Field Office

PO Box 429

Talihina, OK 74571-0429

918-567-2956

918-567-3038 FAX

Serving LeFlore, Latimer and Pushmataha Cnty's & Talihina Cons. Dist.

District Employees

Hannebrink, Donna

District Manager

918-567-2956

Taloga Field Service Center

S. Broadway and Riggs (PO Box 36)

Taloga, OK 73667-0036

580-328-5321

580-328-5296 FAX

Serving Dewey County & Dewey County Conservation District

NRCS Employees

Clark, Paul D.

District Conservationist

580-328-5321 x102

White, Bryan S.

Soil Conservation Technician

580-328-5321 x113

District Employees

Bratten, Coleta

District Secretary

580-328-5366 x101

Tishomingo Field Service Center

1014 N. Kemp

Tishomingo, OK 73460

580-371-3219

580-371-2825 FAX

Serving Johnston County & Johnston County Conservation District

NRCS Employees

Hall, William R.

District Conservationist

580-371-3219 x108

Oliver, Allen M.

Soil Conservation Technician

580-371-3219 x109

District Employees

Pigg, Darlene

District Secretary

580-371-3481 x101

OKLAHOMA PERSONNEL DIRECTORY

Field Service Centers and Conservation District Offices

Office Name / Address /

Personnel

Title

Telephone

Tulsa Field Service Center

5401 S. Sheridan, Suite 201
Tulsa, OK 74145-7522

918-280-1596

918-280-1594 FAX

Serving Tulsa County & Tulsa County Conservation District

NRCS Employees

Bishop, Gary B.

District Conservationist

918-280-1596 x101

Trujillo, Freddy J.

Soil Conservation Technician

918-280-1596 x107

District Employees

Coleman, Deborah L.

District Secretary

918-280-1596 x100

Ragge', Michelle A.

District Manager

918-280-1596 x100

Grant, Scott D.

District Conservation Prog. Splst.

918-280-1596 x100

Valliant Field Office

410 N. Dalton Ave. (PO Box 480)
Valliant, OK 74764-0480

580-933-4704

580-933-4704 FAX

Serving McCurtain County & Valliant Conservation District

District Employees

Christian, Linda

District Secretary

580-933-4704

Vinita Field Service Center

235 W. Hope
Vinita, OK 74301

918-256-6882

918-256-2407 FAX

Serving Craig County & Craig County Conservation District

NRCS Employees

Friend, Erik N.

District Conservationist

918-256-6882 x111

Hughes, Jeremy L.

Soil Conservationist

918-256-6882 x112

Ritzman, Gregory L.

Soil Conservation Technician

918-256-6882 x113

District Employees

Callison, Laura Jo

District Secretary

918-256-6882 x101

Wagoner Field Service Center

26114 State Hwy 51
Wagoner, OK 74467-8087

918-485-4747

918-485-2749 FAX

Serving Wagoner County & Wagoner County Conservation District

NRCS Employees

Thompson, Melissa S.

District Conservationist

918-485-4747 x102

Thompson, Alfred R.

Soil Conservation Technician

918-485-4747 x108

District Employees

Templeton, Paula F.

District Programs Coordinator

918-485-4010 x101

OKLAHOMA PERSONNEL DIRECTORY

Field Service Centers and Conservation District Offices

Office Name / Address /

Personnel

Title

Telephone

Walters Field Service Center

705 W. Missouri
Walters, OK 73572

580-875-3395
580-875-3340 FAX

Serving Cotton County & Cotton County Conservation District

NRCS Employees

Davis, Jeffrey A.
Doherty, Bill J.

District Conservationist
Soil Conservation Technician

580-875-3395 x103
580-875-3395 x104

District Employees

Rice, Fredia

District Secretary

580-875-2323 x101

Watonga Field Service Center

221 E. Main
Watonga, OK 73772-3832

580-623-8501
580-623-8503 FAX

Serving Blaine County & Blaine County Conservation District

NRCS Employees

Shepherd, Chris W.
Till, Michael
Lolles, Devin R.

District Conservationist
Soil Conservation Technician
Soil Conservationist

580-623-8501 x110
580-623-8501 x108
580-623-8501 x109

District Employees

Young, Lisa
Hoar, Scott

District Secretary
District Technician

580-623-4740 x101
580-623-4740 x101

Waurika Field Service Center

13th and G Street (Rt. 2, Box 119)
Waurika, OK 73573-9622

580-228-2352
580-228-3187 FAX

Serving Jefferson County & Jefferson County Conservation District

NRCS Employees

Norton, Clinton T.
Howell, Chadd A.

District Conservationist
Soil Conservation Technician

580-228-2352 x106
580-228-2352 x108

District Employees

Benton, Jane

District Secretary

580-228-2760 x101

OKLAHOMA PERSONNEL DIRECTORY

Field Service Centers and Conservation District Offices

Office Name / Address /

Personnel

Title

Telephone

Weatherford Field Office

300 S. Broadway (PO Box 505)

Weatherford, OK 73096-0505

580-772-7670

580-772-7748 FAX

Serving Custer and Washita Counties & Deer Creek Cons. District

District Employees

Harper, Christine

District Manager

580-772-7670

Fry, Elton

District Equipment Manager

580-772-7670

Hill, Kristi

Environmental Ed/Info Coord.

580-772-7670

Wewoka Field Service Center

1400 Indian Road

Wewoka, OK 74884-1422

405-257-2755

405-257-6716 FAX

Serving Seminole County & Seminole County Conservation District

NRCS Employees

James, Thomas E.

District Conservationist

405-257-2755 x105

Brown, Billy P.

Soil Conservation Technician

405-257-2755 x106

District Employees

Brinlee, Collene

District Programs Coordinator

405-257-5578 x101

Wilburton Native American Service Center

207 E. Main, Rm 109

Wilburton, OK 74578

918-465-2181

918-465-3209 FAX

Serving Latimer County & Latimer County Conservation District

NRCS Employees

Bryan, Michael D.

District Conservationist

918-465-2181

Harrison Jr, James W.

Soil Conservation Technician

918-465-2181

District Employees

Hannebrink, Donna

District Manger

918-465-2181

Norris, Jacqueline N.

District Education Specialist

918-465-2181

OKLAHOMA PERSONNEL DIRECTORY

Field Service Centers and Conservation District Offices

Office Name / Address /

Personnel

Title

Telephone

Woodward Field Service Center

4900 Oklahoma Ave., Suite 100

Woodward, OK 73801-5727

580-256-5320

580-254-5236 FAX

Serving Woodward County & Woodward County Conservation District

NRCS Employees

Irving, Stanley J.

District Conservationist

580-256-5320 x128

Friend, Corey W.

Rangeland Mgmt. Specialist

580-256-5320 x129

Morehart, Kevin F.

Soil Conservation Technician

580-256-5320 x127

District Employees

Searcy, Jewell A.

District Secretary

580-256-5320 x104

OKLAHOMA PERSONNEL DIRECTORY

Administrative and Technical Support Offices

Office Name / Address / Personnel	Title	Telephone
--------------------------------------	-------	-----------

Altus Soil Survey Office (MLRA)

3100 N. Main
Altus, OK 73521

580-482-9824
580-482-6243 FAX

Morley, Tyson G.	Soil Scientist, Team Leader	580-482-9824
------------------	-----------------------------	--------------

Claremore Technical Service Office

1900 West Will Rogers Circle, Suite A
Claremore, OK 74017-1315

918-341-3222
918-342-6897 FAX

Administrative Support

Frale, Wilma R.	Office Automation Clerk
-----------------	-------------------------

918-341-3222
918-341-3222 x115

Technical Specialists

Baker, Darryl D. "Buddy"	Civil Engineering Technician
--------------------------	------------------------------

918-341-3241
918-341-3241 x118
405-612-1710 Mobile

Clark, Steven D.	Resource Specialist
------------------	---------------------

918-341-3241 x116
405-612-1709 Mobile

Coppock, Larry M.	Resource Engineer
-------------------	-------------------

918-341-3241 x119
405-612-9455 Mobile

Duke, Monica L.	Agricultural Engineer
-----------------	-----------------------

918-341-3241 x117
405-612-1713 Mobile

McCright, Richard T.	Resource Soil Scientist
----------------------	-------------------------

918-341-3241 x120
405-612-1711 Mobile

Ward, Matt A.	Resource Con. (Program Liaison)
---------------	---------------------------------

918-341-3241 x121
405-612-1708 Mobile

OKLAHOMA PERSONNEL DIRECTORY

Administrative and Technical Support Offices (Cont'd)

<u>Office Name / Address / Personnel</u>	<u>Title</u>	<u>Telephone</u>
Clinton Technical Service Office		
517 Prairie Chief Clinton, OK 73601-2439		580-323-3733 580-323-6131 FAX
<u>Administrative Support</u>		
Koch, Saska D	Office Automation Clerk	580-323-3733 580-323-3733
<u>Technical Specialists</u>		
Conkling, Mark D.	Resource Specialist (Agron)	580-323-2580 580-323-2580
Eeds, Baker B.	Resource Engineer	580-323-2580
Jarrell, Larry D.	Resource Engineer	580-323-2580
Pietz-Jones, Brandy A.	Resource Con. (Program Liaison)	580-323-2580
Salisbury, Clay D.	Soil Scientist	580-323-2580
Scott, Jerry D.	Civil Engineering Technician	580-323-2580
<hr/>		
McAlester Technical Service Office		
1 st National Center, Suite 115 McAlester, OK 74501-5053		918-423-8730 918-423-1542 FAX
<u>Administrative Support</u>		
Parkhurst, Linda G.	Office Automation Clerk	918-423-8730 918-423-8730
<u>Technical Specialists</u>		
Barner, Steve L.	WRP Specialist (State Staff)	918-423-8730 918-423-8730 405-742-0580 Mobile
Edmonds, David G.	Civil Engineering Technician	918-423-8730
Miller, Timothy N.	Resource Engineer	918-423-8730
Pannell, R. Brent	Resource Con. (Program Liaison)	918-423-8730 405-612-9345 Mobile
Schneider, Scott	Agricultural Engineer	918-423-8730
Wells, David B.	Conservation Agronomist	918-423-8730
Woods Jr, Carl E. Headquartered at:	Resource Soil Scientist 102 N. Indian Meridian Road Pauls Valley, OK 73075-9236 918-429-8703 Mobile FAX 405-238-3275	405-238-6767 x128

OKLAHOMA PERSONNEL DIRECTORY

Administrative and Technical Support Offices (Cont'd)

Office Name / Address / Personnel	Title	Telephone
Pauls Valley Technical Service Office		
102 N. Indian Meridian Road Pauls Valley, OK 73075-9236		405-238-6767 405-238-3275 FAX
<u>Administrative Support</u>		
Koch, Saska D Headquartered at:	Office Automation Clerk 517 Prairie Chief Clinton, OK 73601-2439 FAX 580-323-3161	580-323-3733
<u>Technical Specialists</u>		
Dominguez, Lynnette A.	Resource Engineer	405-238-6767 x5 405-238-6767 x5 405-612-9338 Mobile
Fritzler, Harry L.	Grazing Land Splst. (State Staff)	405-238-6767 x122
McCarty, Richard E.	Civil Engineering Technician	405-238-6767 x125
<hr/>		
Pauls Valley Watershed Construction Office		
102 N. Indian Meridian Road Pauls Valley, OK 73075-9236		405-238-6767 405-238-3275 FAX
<u>Administrative Support</u>		
Fitzpatrick, Connie L. Headquartered at:	Secretary 100 USDA, Suite 206 Stillwater, OK 74074-2655 FAX 405-742-1201	405-742-1256
<u>Watershed Office Staff</u>		
Freeland, Joe D.	Project Engineer	405-238-6767 x5 405-238-6767 x123 405-238-0258 Mobile
Holler, Wayne A.	Construction Inspector	405-238-6767 x129 405-238-0256 Mobile
Mauldin, Randy H.	Surveying Technician	405-238-6767 x131
Miller, Russell J.	Construction Inspector	405-238-6767 x127
Pearson II, Jackie L.	Civil Engineering Technician	405-238-6767 x130
Smith, Ronald D.	Construction Inspector	405-238-6767 x129 405-238-0255 Mobile
Watts, Craig E.	Civil Engineer	(LWOP - Military)
White, Michael K.	Construction Inspector	405-238-6767 x126
Washburn, Curtis L. Headquartered at:	Agricultural Engineer 1001 W Petree Road Anadarko, OK 73005 FAX 405-247-2060	405-247-3303 x3

OKLAHOMA PERSONNEL DIRECTORY

Administrative and Technical Support Offices (Cont'd)

Office Name / Address / Personnel	Title	Telephone
Perry Technical Service Office		
1302 N. Highway 77 Perry, OK 73077-2433		580-336-5597 580-572-9368 FAX
<u>Administrative Support</u>		
Goforth, Sharla K.	Office Automation Clerk	580-336-5597 580-336-5597 x116
<u>Technical Specialists</u>		
Frey, Larry E.	Civil Engineering Technician	580-336-5597 580-336-5597 x119
Jones, Monte J.	Civil Engineer	580-336-5597 x120 405-612-2969 Mobile
Smith, Daniel R.	Resource Engineer	580-336-5597 x121 405-743-9371 Mobile
<hr/>		
Perry Watershed Construction Office		
1111 Market St. Perry, OK 73077-7223		580-336-9775 580-336-0111 FAX
<u>Administrative Support</u>		
Fitzpatrick, Connie L. Headquartered at:	Secretary 100 USDA, Suite 206 Stillwater, OK 74074-2655 FAX 405-742-1201	405-742-1256
Cook, Orville Dean	Project Engineer	580-336-9775 405-743-9434 Mobile
Armstrong, Athol F.	Construction Inspector	580-336-9775 405-743-9609 Mobile
Banning, Charles T.	Construction Inspector	580-336-9775
Banning, Randy D.	Civil Engineering Technician	580-336-9775 405-743-9613 Mobile
Goforth, Michael D.	Civil Engineering Technician	580-336-9775
Lillie, Jonnie R.	Construction Inspector	580-336-9775
Soderstrom, Gary D.	Construction Inspector	580-336-9775 405-743-6670 Mobile
<hr/>		
Stillwater Soil Survey Office (MLRA)		
100 USDA Suite 206 Stillwater, OK 74074-2655		405-742-1222 405-742-1201 FAX
Alspach, Steven D.	Soil Scientist, Team Leader	405-742-1222
Boyett, Jacob B.	Soil Scientist	405-742-1108
Dennis, Jeremy L.	Soil Scientist	405-742-1111
Kemph, Tyler	Student Trainee – Soil Science	405-742-1222

OKLAHOMA PERSONNEL DIRECTORY

Administrative and Technical Support Offices (Cont'd)

Office Name / Address / Personnel	Title	Telephone
--------------------------------------	-------	-----------

Woodward Soil Survey Office (MLRA)

4900 Oklahoma Ave., Suite 300
Woodward, OK 73801-5727

580-256-5320 x7
580-254-5236 FAX

McGowen, Steven L.	Soil Scientist, Team Leader	580-256-5320 x138
Bushong, Jacob T.	Soil Scientist	580-256-5320 x139
Hobbs, Christopher P.	Soil Scientist	580-256-5320 x7

Woodward Technical Service Office

4900 Oklahoma Ave, Suite 300
Woodward, OK 73801-3713

580-256-5320 x6
580-256-3859 FAX
Mobile 580-334-8056

Administrative Support

Goforth, Sharla K. Headquartered at:	Office Automation Clerk 1302 N. Highway 77 Perry, OK 73077-2433 FAX 580-572-9368	580-336-5597 x116
---	---	-------------------

Technical Specialists

Collier, Troy L.	Resource Soil Scientist	580-256-5320 x121
McKay, David R.	Resource Engineer	580-256-5320 x118
Schlegel, N. Rick	Agricultural Engineer (State Staff)	580-256-5320 x120
Shaffer, James E.	Resource Specialist	580-256-5320 x117 405-612-9327 Mobile
Stipe, Dennis W.	Civil Engineering Technician	580-256-5320 x119
Taylor, Brooke A.	Resource Con. (Program Liaison)	580-256-5320 x123

OKLAHOMA PERSONNEL DIRECTORY

Resource Conservation and Development Offices

Office Name / Address /

Personnel

Title

Telephone

ASCOG Resource Conservation and Development Office

3901 West Beech
Duncan, OK 73533

580-252-4253
580-255-1938 FAX

Wright, Larry W. Acting RC&D Coordinator 580-252-4253 x121

Cherokee Hills Resource Conservation and Development Office

627 S. Cedar (PO Box 717)
Tahlequah, OK 74465-0717

918-456-8211
918-456-2304 FAX

Hern, Marty D. RC&D Coordinator 918-456-8211
405-612-9466 Mobile

Cross Timbers Resource Conservation and Development Office

121 Sertco Road
Okemah, OK 74859

918-623-0658
918-623-1509 FAX

Tucker, Andrew I. RC&D Coordinator 918-623-0658
918-424-2427 Mobile

Allen, Kathy A. RC&D Council Office Manager 918-623-0658

Fun Country Resource Conservation and Development Office

105 N. Indian Meridian
Pauls Valley, OK 73075

405-238-6544
405-238-3117 FAX

Williams, Angela S. RC&D Coordinator 405-238-6544
405-238-0687 Mobile

Couch, Jessica N. RC&D Council Admin. Asst. 405-238-6544

Great Plains Resource Conservation and Development Office

1505 N. Glenn English
Cordell, OK 73632-1405

580-832-3661
580-832-2434 FAX

Wright, Larry W. RC&D Coordinator 580-832-3661 x104
580-821-6275 Mobile

Witvoet, Lorie Casey RC&D Council Project Asst. 580-832-3661

OKLAHOMA PERSONNEL DIRECTORY

Resource Conservation and Development Offices (Cont'd)

Office Name / Address / Personnel	Title	Telephone
--------------------------------------	-------	-----------

High Plains Resource Conservation and Development Office

# 2 Miles Addition (PO Box 353) Buffalo, OK 73834		580-735-2033 580-735-2536 FAX
Lucas, Tom M.	RC&D Coordinator	580-735-2033 Mobile
Richard, Christina	Clerk Typist (Part time)	580-735-2033

Ouachita Mountains Resource Conservation and Devl. Office

7 E. Choctaw, Suite 101 McAlester, OK 74501-5060		918-423-2479 918-423-0793 FAX
Garman, Gary G.	RC&D Coordinator	918-423-2479 405-742-0553 Mobile

Tallgrass Resource Conservation and Development Office

5401 S. Sheridan, Suite 106 Tulsa, OK 74145-7522		918-627-8101 918-622-2637 FAX
Kindell, Gregory P.	RC&D Coordinator	918-627-8101 x115 405-742-7460 Mobile
Johnnie, Priscilla A.	RC&D Council Admin. Asst.	918-627-8101 x115

Wheatland Resource Conservation and Development Office

1216 W. Willow, Suite E Enid, OK 73703-2532		580-234-8331 580-237-9536 FAX
Smith, T. Carl	RC&D Coordinator	580-234-8331 580-541-9164 Mobile
McCulloch, Iva Jeanne	RC&D Council Office Asst.	580-234-8331

Tribal Liaison Office

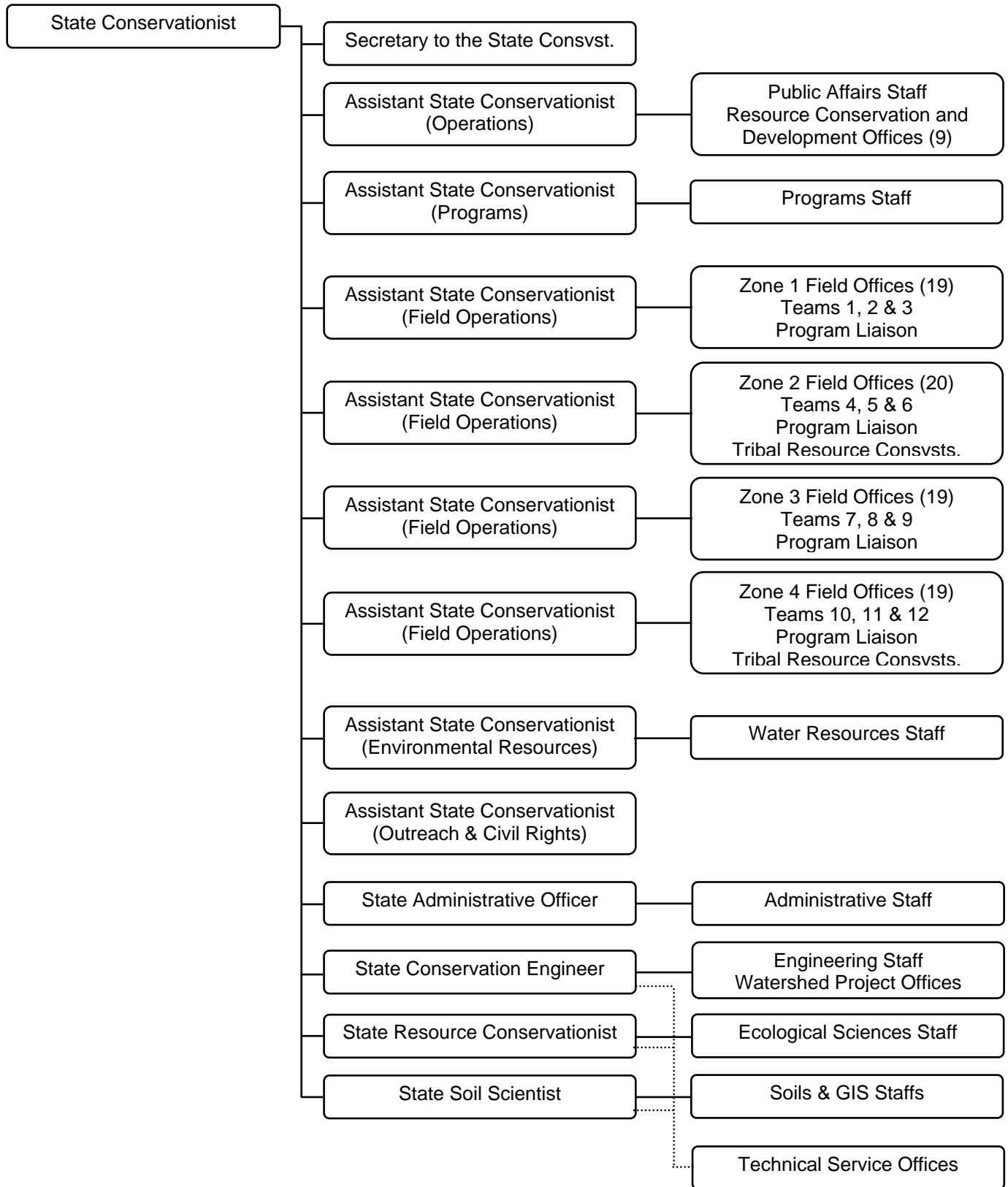
Office Name / Address / Personnel	Title	Telephone
--------------------------------------	-------	-----------

Choctaw Nation

16 th & Locust (PO Drawer 1210) Durant, OK 74702		580-924-8280 580-924-0676 FAX
Colyer, G. Ann	Tribal Resource Conservationist	580-924-8280 x5134

OKLAHOMA PERSONNEL DIRECTORY

Appendix A - Organization Chart



OKLAHOMA PERSONNEL DIRECTORY

Appendix C - Order of Succession

Order of Succession for State Conservationist in Oklahoma

1. O'Neill, Gary L. ASTC (Operations)
2. Hankins, Sam R. State Administrative Officer
3. Miller, Lanny R. ASTC (Programs)
4. Ford, Jimmy G. State Soil Scientist
5. Stoner, J. Chris State Conservation Engineer
6. Porter, Billy R. ASTC (Water Resources)
7. Parker, Jasper T. ASTC (Outreach & Civil Rights / Public Affairs)
8. Matlock, Kenneth E. State Resource Conservationist
9. Assistant State Conservationists (Field Operations) as available:
 - Guerrero, Gilbert F. ASTC (FO), Zone 2
 - Stewart, Teresa D. ASTC (FO), Zone 3
 - Vongkhamdy, Phoukham ASTC (FO), Zone 4
 - Wood II, James D. ASTC (FO), Zone 1

Alternate State Headquarters

1. Claremore Technical Service Office
2. Clinton Technical Service Office
3. McAlester Technical Service Office
4. Woodward Technical Service Office

Order of Succession of State Conservation Engineer

The State Conservation Engineer or the "acting for" designee is to be notified immediately in the event of any flow through the emergency spillways of project dams in accordance with National Engineering Manual OK504.12. When the State Conservation Engineer is absent from the office, the acting State Conservation Engineer will be in the order as follows:

<u>Name</u>	<u>Title</u>	<u>Office</u>	<u>Home</u>	<u>Mobile</u>
Stoner, J. Chris	State Cons. Engr.	405-742-1260	405-377-1530	405-334-2926
Cosyleon, Severo G.	Design Staff Head	405-742-1270		
Cook, Kevin R.	Civil Engineer	405-742-1257		
Slowik, Victor W.	Design Engineer	405-742-1272		
Sand, Heath A.	Design Engineer	405-742-1262		

OKLAHOMA PERSONNEL DIRECTORY

Appendix D - Boards and Committees

Oklahoma Board of Technology

Member

State Conservation Engineer
State Resource Conservationist
State Soil Scientist

Incumbent

Stoner, J. Chris
Matlock, Kenneth E.
Ford, Jimmy G.

Oklahoma Civil Rights Advisory Committee

Chairperson

Hungerford, David M.
405-372-7071 x114

Advisor

Guerrero, Gilbert F.
405-752-1207

Asian-Pacific Program Manager

Vongkhamdy, Phoukham "Pooh"
405-742-1215

Zone 1 Representative

Martin, Joy N.
580-362-3362

Black Emphasis Program Manager

Bradford, Cleon
580-323-0366 x3

Zone 2 Representative

Hitch, Kenneth L.
918-825-3673 x106

Disability/Veterans Program Manager

Parham, Paul D.
580-889-2554 x112

Zone 3 Representative

Pietz-Jones, Brandy A.
405-321-7766 x103

Federal Womens Program Manager

Adams, Julie A.
405-742-1250

Zone 4 Representative

James, Thomas E.
405-257-2755 x105

Hispanic Program Manager

Manley, Carri A.
580-625-3302 x109

Native American Program Manager

Oliver, Melanie D.
918-367-2113 x102

State Field Office Technical Guide Committee

Representing

Engineering
Ecological Sciences & Conservation Planning
Information Technology
Soils
Water Resources

Member

Colvin, Charlie G.
Glasgow, Steven J.
Vacant
Scott, Gregory F.
Burns, April D.

Zone Technical Committee Chairpersons

Zone

Claremore
Clinton
McAlester
Woodward

Chairperson

Vacant
Conkling, Mark D.
Viles, Sammy L.
Clark, Paul D.

Headquarters

Claremore TSO
Clinton TSO
McAlester FSC
Taloga FSC

OKLAHOMA PERSONNEL DIRECTORY

Appendix E - Quick Reference

<u>Office</u>	<u>Telephone</u>	<u>Address</u>	<u>City</u>
State Office	405-742-1204	100 USDA Suite 208	Stillwater
1890 College Liaison	405-466-6124	Ag Research Ed & Ext Bldg	Langston
<u>Technical Service Offices</u>			
Altus Soil Survey	580-482-4312 x4	3100 N. Main	Altus
Claremore TSO	918-341-3276 x5	1900 W. Will Rogers Circle	Claremore
Clinton TSO	580-323-3733	517 Prairie Chief	Clinton
McAlester TSO	918-423-8730	1 st National Center, Suite 115	McAlester
Pauls Valley TSO & WO	405-238-6767 x5	102 N. Indian Meridian Road	Pauls Valley
Perry TSO	580-336-5597 x5	1302 N Highway 77	Perry
Perry Watershed Office	580-336-9775	1111 Market	Perry
Woodward Soil Survey	580-256-5320 x7	4900 Oklahoma, Suite 100	Woodward
Woodward TSO	580-256-5320 x6	4900 Oklahoma, Suite 300	Woodward
<u>R C & D Offices</u>			
ASCOG	580-252-4253 x5	3901 W. Beech	Duncan
Cherokee Hills	918-456-8211	627 S. Cedar	Tahlequah
Cross Timbers	918-623-0658	121 Sertco Road	Okemah
Fun Country	405-238-6544	105 N. Indian Meridian	Pauls Valley
Great Plains	580-832-3661 x5	1505 N. Glenn English	Cordell
High Plains	580-735-2033	# 2 Miles Addition	Buffalo
Ouachita Mtns	918-423-2479	7 E. Choctaw, Suite 101	McAlester
Tallgrass	918-627-8101	5401 S. Sheridan, Suite 106	Tulsa
Wheatland	580-234-8331	1216 W. Willow, Suite E	Enid
<u>Native American Liaison Offices</u>			
Choctaw Nation	580-924-8280 x5134	16 th & Locust	Durant
<u>Field Offices</u>			
Central North Canadian River CD	405-884-2383	129 E. Main	Geary
Checotah CD	918-473-6217	323-B W. Lafayette	Checotah
Cimarron Valley CD	580-822-3255	218 N. 5 th	Okeene
Deer Creek CD	580-772-7670	300 S. Broadway	Weatherford
Greer County CD	580-782-3581	2302 N. Louis Tittle	Mangum
Konawa CD	580-925-3117	102 E. 1 st	Konawa
Mountain View CD	580-347-2220	318 Main	Mt. View
North Caddo CD	405-542-3205	201 E. Main	Hinton
Shawnee CD	405-275-5220	127 N. Park	Shawnee
Talihina CD	918-567-2956	PO Box 429	Talihina
Valliant CD	580-933-4704	410 N. Dalton	Valliant
West Caddo CD	405-643-5102	1/8 th mile north of Ft Cobb	Fort Cobb
Woods County CD	580-621-3251	403 Main	Freedom

OKLAHOMA PERSONNEL DIRECTORY

Appendix E – Quick Reference (Cont'd)

Field Service Centers & Native American Service Centers

<u>City</u>	<u>Telephone</u>	<u>Address</u>	<u>City</u>	<u>Telephone</u>	<u>Address</u>
Ada	580-332-3905	1328 Craddock Road	Mangum	580-782-2787	116 E. Pierce
Altus	580-482-4312	3100 N Main	Marietta	580-276-3201	1208 N. Highway 77
Alva	580-327-3136	927 W. Oklahoma	McAlester	918-423-4073	200 S. Third
Anadarko	405-247-3303	1001 W. Petree Road	Medford	580-395-2324	409 S. Front St.
Antlers	580-298-3281	510 Highway 271 N.	Miami	918-542-4576	630 E. Steve Owens
Ardmore	580-223-7277	39 N. Washington	Muskogee	918-682-8831	3001 Azalea Park Dr
Arnett	580-885-7244	155 E. Renfrow	Newkirk	580-362-3362	5501 N. Pleasantview
Atoka	580-889-2554	2341 S. Mississippi	Norman	405-321-7766	2424 Springer, Suite 105 B
Beaver	580-625-3302	106 W. First	Nowata	918-273-3074	123 S. Ash (Hiway169)
Boise City	580-544-2401	210 S. Cimarron	Okemah	918-623-0077	121 Sertco Road
Bristow	918-367-2113	128 E. 3 rd	Oklahoma City	405-521-1332	4850 N. Lincoln Blvd. Ste B
Buffalo	580-735-2033	# 2 Miles Addition	Okmulgee	918-756-0850	719 E. 8 th
Chandler	405-258-1405	201 N. Sandy Lane	Pauls Valley	405-238-6767	105 N. Indian Meridian
Cherokee	580-596-2625	401 W. Cherokee	Pawhuska	918-287-3570	1000 W. Main
Cheyenne	580-497-2293	321 W. Broadway	Pawnee	918-762-2736	500 Harrison St.
Chickasha	405-224-1381	828 W. Choctaw Ave.	Perry	580-336-5597	1302 N. Highway 77
Claremore	918-341-3276	1900 W. Will Rogers Cir.	Poteau	918-647-4800	109 Kerr Blvd
Clinton	580-323-0366	1508 Neptune Drive	Pryor	918-825-3673	4238 N. E. 1st
Coalgate	580-927-2182	6 E. Lafayette	Purcell	405-527-3160	1726 N. Green
Cordell	580-832-3275	1505 N. Glenn English	Sallisaw	918-775-6577	2606 S. Kerr Blvd.
Dewey	918-534-2720	205 E. 12 th	Sayre	580-928-3113	802C N.E. Highway 66
Duncan	580-255-7676	3910 W. Beech	Shawnee	405-273-2076	201 N. Bell
Durant	580-924-4131	2704 N. First Ave	Stigler	918-967-2488	1005 W. Main
El Reno	405-262-1958	1625 E. Hwy. 66	Stillwater	405-372-7071	2600 S. Main
Enid	580-237-4321	1216 W. Willow	Stilwell	918-696-7612	920 S. 2 nd
Eufaula	918-689-2301	Alexander Drive	Sulphur	580-622-3913	4000 W. Hiway 7
Fairview	580-227-4844	225 N. Main	Tahlequah	918-456-1924	918 West Choctaw
Frederick	580-335-2817	1120 S. Main	Taloga	580-328-5321	S. Broadway & Riggs
Guthrie	405-282-1695	2227 Iron Mound Dr	Tishomingo	580-371-3219	1014 N. Kemp
Guymon	580-338-7379	601 S. E. Fifth	Tulsa	918-280-1596	5401 S. Sheridan
Hobart	580-726-3347	802 W. 11 th	Vinita	918-256-6882	235 W. Hope
Holdenville	405-379-3221	419 E. Highway 270	Wagoner	918-485-4747	26114 State Hwy 51
Hollis	580-688-3456	320 N. Main	Walters	580-875-3395	705 W. Missouri
Hugo	580-326-7516	3521 E. Jackson	Watonga	580-623-8501	221 E. Main
Idabel	580-286-2574	201 N. Central Ave.	Waurika	580-228-2352	13 th and G Street
Jay	918-253-4513	319 S. 6 th	Wewoka	405-257-2755	1400 Indian Road
Kingfisher	405-375-3200	1600 S. 13 th	Wilburton	918-465-2181	207 E. Main, Rm 109
Lawton	580-353-1564	1606 NW Lawton	Woodward	580-256-5320	4900 Oklahoma Ave
Madill	580-795-3148	800 Cedar Drive			

OKLAHOMA PERSONNEL DIRECTORY

Index

Acker, Frank.....	19	Boise City FSC	10
Ada FSC	7	Bone, Betty J.	22
Adair Co. CD.....	30	Boswell, Teresa D.	10
Adair County	30	Bowler, Rishell F.....	26
Adams, Julie A.....	4, 46	Boyd, Oscar B.	18
Administrative Staff	2	Boyett, Jacob B.	39
Alfalfa Co. CD	11	Bradford, Cleaon	13, 46
Alfalfa County.....	11	Bradford, Glenna	9
Allen, Christopher L.	8	Bratten, Coleta.....	31
Allen, Gregory C.	12	Bredesen, Brian B.	3
Allen, Gregory D.	19	Brinlee, Collene	35
Allen, Kathy A.	41	Bristow FSC.....	10
Alspach, Steven D.	39	Brock, Will M.....	26
Altus FSC.....	7	Brooks, Angie	20
Altus SSO	36	Brooks, Kathy F.	7
Alva FSC.....	7	Brorsen, Dennis R.	27
Anadarko FSC	8	Brown, Billy P.	35
Anderson, Doris J.	30	Brown, Cherrie G.....	10
Antlers FSC.....	8	Brown, Edith	13
Arbuckle CD.....	8	Brown, Justin S.....	27
Ardmore FSC	8	Bryan CD	14
Armstrong, Athol F.....	39	Bryan County	14
Arnett FSC	9	Bryan, Michael D.	35
Arnold, LeRoy K.....	26	Bryan, Whitney J.	9
ASCOG RC&D Office	41	Buffalo FSC	10
Ashbrenner, Jill L.	20	Burkhalter, Donna L.....	14
Atoka Co. CD	9	Burks, Robert S.	8
Atoka County	9	Burnett, Leota A.....	23
Atoka FSC.....	9	Burns, April D.	4, 46
Bagby, Robert N.	30	Burns, Brandon K.	20
Baker, Darryl D. 'Buddy'.....	36	Burrows, Jeremy.....	12
Balch, Jerry D.	22	Bushong, Jacob T.....	40
Banning, Charles T.	39	Caddo County.....	8, 16, 17
Banning, Randy D.....	39	Caldwell, Larry W.	4
Barner, Steve L.	3, 37	Callison, Laura Jo	33
Barnes, Matthew A.....	16, 18	Cambron, Robert E.....	22
Beaver Co. CD.....	9	Campbell, Eddie P.....	13
Beaver County	9	Canadian County.....	15, 17
Beaver FSC	9	Caney Valley CD	14
Beck, Karen	19	Carnott, Debi J.....	17
Beckham County.....	29	Carter County	8
Belford, Jim	10	Carter, Lovie L.	26
Bennett, Andrew C.....	16	Caswell, Geary	18
Benton, Jane.....	34	Central North Canadian River CD	17
Benton, Mark W.	29	Chaffin, Bob P.	7
Best, Christopher M.	16	Chandler FSC.....	11
Betchan, Jay E.....	15	Chandler, Brandon K.	26
Bierig, Cindy J.....	16	Chandler, Larry.....	20
Bishop, Gary B.....	32	Checotah CD	11
Blaine Co. CD	34	Checotah Field Office	11
Blaine County.....	17, 25, 34	Cherokee Co. CD	31
Blasi, Julie R.	24	Cherokee County.....	31
Boerngen, Laurie A.....	12	Cherokee FSC.....	11

OKLAHOMA PERSONNEL DIRECTORY

Cherokee Hills RC&D Office	41	Creek Co. CD	10
Cheyenne FSC	12	Creek County.....	10
Chickasha FSC	12	Crider, J. Duane	15
Choctaw County.....	19	Cross Timbers RC&D Office.....	41
Choctaw Nation.....	42	Crouch, Carol V.	28
Christian, Linda.....	32	Curry, Tammy	30
Christian, Patti.....	28	Custer Co. CD	13
Cimarron Co. CD	10	Custer County.....	13, 34
Cimarron County.....	10	Daniel, Terri B.....	4
Cimarron Valley CD	25	Daniels, Eric W.	20
Cink, Steven K.	24	Davis, Charles S.....	19
Claremore FSC	12	Davis, Clayton P.	12
Claremore TSO.....	36	Davis, Dana L.	14
Clark, Jo Etta	23	Davis, Jeffrey A.	33
Clark, Paul D.....	31, 46	Day, Alyson	14
Clark, Steven D.....	36	Deen, Matthew L.	19
Cleveland Co. CD	24	Deer Creek CD	34
Cleveland County.....	24	Delaware Co. CD.....	20
Cline, Bobby J.....	30	Delaware County	20
Cline, Joey	6	Dennis, Jeremy L.....	39
Clinton FSC.....	13	Dewey Co. CD	31
Clinton TSO	37	Dewey County	31
Coal Co. CD.....	13	Dewey FSC	14
Coal County	13	Dimitratos, Belinda	7
Coalgate FSC	13	Dixon, James R.	14
Cole, Gerry L.....	2	Doherty, Bill J.	33
Coleman, Debrorah L.....	32	Dominguez, Lynnette A.	38
Collier, Suzanne A.	3	Dotson, Robert D.....	11
Collier, Troy L.....	40	Duke, Monica L.....	36
Collins, Danna.....	26	Dukes Jr, Robert.....	25
Collyar, Dean C.....	26	Duncan FSC	14
Colvin, Charlie G.	3, 46	Dunham, Royce D.	9
Colwell, N. Cord.....	12	Durant FSC.....	14
Colyer, G. Ann	42	E. Woods Co. CD	7
Comanche Co. CD	21	East Canadian County CD	15
Comanche County	21	Eckroat, Jack A.....	2
Conkling, Mark D.	37, 46	Ecological Sci & Cons Planning Staff	2
Cook, Kevin R.	3, 45	Ediger, Judith Lynn	22
Cook, Orville Dean.....	39	Edmonds, David G.	37
Cook, Roy W.....	10	Edwards, Beverly J.....	28
Cook, Shelia.....	6	Eeds, Baker B.....	37
Coppock, Larry M.....	36	Ehlers, Kim C.....	30
Corbin, Wanelda I.	6	El Reno FSC.....	15
Cordell FSC	13	Elder, Brad D.	8
Corgill, Johnny	8	Ellis Co. CD	9
Corum, Jennifer	22	Ellis County.....	9
Cosyleon, Severo G.....	3, 45	Ellis, James D.....	30
Cotton Co. CD.....	33	Elsener, Steven P.....	4
Cotton County	33	Engineering Staff	3
Couch, Jessica N.....	41	Enid FSC	15
Courtwright, Kathryn	11, 15	Ernce, Janell.....	6
Craig Co. CD.....	33	Eufaula FSC	15
Craig County	33	Evans III, Lloyd R.	14
Crall, Edward	16	Fairview FSC	16

OKLAHOMA PERSONNEL DIRECTORY

Farris, Bullit M.	31	Green, Clancy Jo	17
Faulkenberry, Brandon	27	Green, James R.	19
Fenton, Audra Q.	28	Greer Co. CD.....	21
Fentress, Pat R.	28	Greer County	21
Ferguson, Larry D.	4	Grey, Lisa	27
Fields, Grayson L.....	11	Griffith, Grant S.....	18
Financial Management.....	2	Guerrero, Gilbert F.	1, 45, 46
Fitzpatrick, Connie L.	3, 38, 39	Guthrie FSC.....	17
Flehart, Clint E.	7	Guy, Dwight N.	5
Fleming, Shawn D.....	29	Guy, Stephanie L.....	29
Ford, Jimmy G.	4, 45, 46	Guymon FSC.....	17
Fort Cobb Field Office.....	16	Hall, William R.	32
Fowler, Dennis E.....	11	Hamilton, Brad.....	22
Frale, Wilma R.	36	Hankins, Sam R.....	1, 2, 45
Frederick FSC.....	16	Hannebrink, Donna.....	31, 35
Freedom Field Office	16	Harjo, Shane J.....	15
Freeland, Joe D.	38	Harmon Co. CD	18
Freundt, Paul	17	Harmon County	18
Frey, Larry E.	39	Harper Co. CD.....	10
Friend, Corey W.....	35	Harper County	10
Friend, Erik N.....	33	Harper, Christine	34
Fritzler, Harry L.	2, 38	Harrison Jr, James W.....	35
Fun Country RC&D Office.....	41	Hasenmyer, Sarah F.	1
Gaines, MacKenzie D.	19	Haskell Co. CD	29
Garabedian, Linda D.....	2	Haskell County	29
Gardner, Renee I.	2	Haynes, Rick G.....	25
Garfield Co. CD.....	15	Henning, Susan	24
Garfield County	15	Hern, Marty D.	41
Garman, Gary G.	42	Hester, Abrehum N.....	20
Garvin Co. CD.....	26	Hickman, Rebecca L.	2
Garvin County	26	High Plains RC&D Office.....	42
Gay, Don L.....	24, 28	Hill Jr, James L.	17
Geary Field Office.....	17	Hill, Robert C.	11
Geographic Information Systems.....	4	Hilliard, Ronald L.	1
Gerhardt, Cindy.....	13	Hinton Field Office	17
Gilmore, Ro Jane	21	Hise, Jon R.	16
Gilpatrick, Donna	21	Hitch, Kenneth L.....	28, 46
Glasgow, Steven J.	2, 46	Hoar, Scott.....	34
Glasgow, Valerie G.	3	Hobart FSC.....	18
Goedecke, Chris A.....	21	Hobbs, Christopher P.	40
Goedecke, Ronald D.....	26	Holdenville FSC.....	18
Goff, Kimberly	29	Holder, Tammie	27
Goforth, Michael D.....	39	Holler, Wayne A.....	38
Goforth, Sharla K.	39, 40	Hollis FSC.....	18
Goodall, Todd	12	Hood, Larry R.	15
Goodwin, Babette B.....	2	Hook Jr, Floyd Winston	21
Gordon, Julie A.	29	Horton, Clay J.....	7
Grady Co. CD	12	Howard, Terrell D.	9
Grady County	12	Howell, Chadd A.....	34
Grant Co. CD	22	Hudson, Shirley	23
Grant County.....	22	Hughes Co. CD	18
Grant, Scott D.	32	Hughes County.....	18
Grasso, Sam.....	20	Hughes, Jeremy L.	33
Great Plains RC&D Office.....	41	Hugo FSC.....	19

OKLAHOMA PERSONNEL DIRECTORY

Human Resources	2	Lawless, Tammy G.	6
Hungerford, David M.	30, 46	Lawrence, Anthony R.	30
Hungerford, Shelley G.	4	Lawton FSC	21
Idabel FSC	19	LeFlore Co. CD	27
Igo, Russ M.	21	LeFlore County	27, 31
Imler, Iris	10	Lester, Christopher	23
Inman, Andrew R.	30	Levesque, Gina M	20
Inmon, Rebecca	25	Lignons, Lester D.	26
Irving, Stanley J.	35	Lillie, Jonnie R.	39
Jackson Co. CD	7	Lincoln Co. CD	11
Jackson County	7	Lincoln County	11
James, Thomas E.	35, 46	Little River CD	19
Janda, Chris E.	24	Lockwood, Sara L.	2
Janzen, Mark	2	Logan Co. CD	17
Jarrell, Larry D.	37	Logan County	17
Jay FSC	20	Lohmann, Jay M.	7
Jefferson Co. CD	34	Lolles, Devin R.	34
Jefferson County	34	London-Ward, Christine	24
Johnnie, Priscilla A.	42	Love Co. CD	22
Johnson, Randy L.	8	Love County	22
Johnson, Robert Artie	29	Lovekamp, Jeremy I.	11
Johnston Co. CD	32	Lowman, Andrew T.	20
Johnston County	32	Lucas, Tom M.	42
Jones, Andrea G.	18	Luckie, Patricia A.	10
Jones, Monte J.	39	Lynch, Robin L.	29
Jones, Nicholas W.	10	Lyons, Gregory	26
Jones, Ryan K.	21	Maddox, Reva	7
Jones, Timothy D.	29	Madill FSC	21
Kaiser, Sharon G.	4	Major Co. CD	16
Kane, Harold C.	1	Major County	16
Kay Co. CD	24	Management Services	2
Kay County	24	Mangum Field Office	21
Kelley, Gary Steve	13	Mangum FSC	21
Kemph, Tyler	39	Manley, Carri A.	9, 46
Kersten, Ted D.	4	Manning, John	26
Kiamichi CD	19	Maples, J. Mark	25
Kindell, Gregory P.	42	Marietta FSC	22
Kingfisher Co. CD	20	Marshall Co. CD	21
Kingfisher County	20, 25	Marshall County	21
Kingfisher FSC	20	Marshall, Alisa	14
Kiowa Co. CD	18	Martin, Joy N.	46
Kiowa County	18, 23	Martin, Joy N.	24
Kloeckler, Patricia A.	23	Martin, Phillip J.	2
Koch, Saska D.	37, 38	Martin, Tyson J.	27
Konawa CD	20	Mathis, Stacey H.	9
Konawa Field Office	20	Matlock, Kenneth E.	2, 45, 46
Kraft, K. C.	4	Mauldin, Randy H.	38
Kuhn, Jeff	30	May, Paul A.	14
Kuntz, David	21	Mayes Co. CD	28
Lane, Andrea R.	3	Mayes County	28
Lane, Richard L.	4	McAlester FSC	22
Langston, Rodger D.	13	McAlester TSO	37
Latimer Co. CD	35	McCarty, Richard E.	38
Latimer County	31, 35	McClain Co. CD	28

OKLAHOMA PERSONNEL DIRECTORY

McClain County.....	28	Noble County.....	27
McCright, Richard T.....	36	Norman FSC.....	24
McCulloch, Iva Jeanne.....	42	Norris, Jacqueline N.	35
McCurtain County.....	19, 32	North Caddo CD.....	17
McDaniel, Latresia.....	8	North Fork of Red River CD.....	29
McGough, David L.....	10	Norton, Clinton T.	34
McGowen, Steven L.....	40	Nowata Co. CD.....	24
McIntosh Co. CD.....	15	Nowata County.....	24
McIntosh County.....	11, 15	Nowata FSC.....	24
McKay, David R.....	40	Nowlin, Lea Ann.....	20
McNeely, Pamela D.....	6	O'Bryan, Robert C.....	20
McVeigh, Jami B.....	18	O'Neill, Gary L.....	1, 4, 45
Medford FSC.....	22	OCC - State Office.....	5
Mefford, Marti.....	20	Okeene Field Office.....	25
Mendoza, Jose M.....	19	Okemah FSC.....	25
Messenger, Alan R.....	17	Okfuskee Co. CD.....	25
Meyer, Bruce E.....	17	Okfuskee County.....	25
Miami FSC.....	23	Oklahoma City FSC.....	25
Miggletto, Juanita C.....	30	Oklahoma Co. CD.....	25
Miller, Glen B.....	3	Oklahoma County.....	25
Miller, Lanny R.....	1, 3, 45	Okmulgee Co. CD.....	26
Miller, Russell J.....	38	Okmulgee County.....	26
Miller, Timothy N.....	37	Okmulgee FSC.....	26
Mills, Joyce L.....	8	Oliphant, Shelly D.....	7
Mitchell, Tashina C.....	30	Oliver, Allen M.....	32
Moore, Glenda F.....	16	Oliver, Melanie D.....	10, 46
Moore, Joshua, F.....	13	Osage Co. CD.....	26
Moore, Melissa J.....	7	Osage County.....	26
Morehart, Kevin F.....	35	Ottawa Co. CD.....	23
Morehead, Nicole.....	18	Ottawa County.....	23
Morley, Tyson G.....	36	Ouachita Mtns RC&D Office.....	42
Mosteller, Jennifer D.....	26	Owen, Keith.....	12
Mountain View CD.....	23	Owen, Nick R.....	15
Mountain View Field Office.....	23	Owens, James C.....	14
Munsell, Ky.....	16	Pannell, R. Brent.....	37
Murphy, Jacy.....	31	Parham, Paul D.....	9, 46
Murray Co. CD.....	30	Parker, Jasper T.....	1, 45
Murray County.....	30	Parkhurst, Linda G.....	37
Muskogee Co. CD.....	23	Passmore Jr, Giles D.....	29
Muskogee County.....	23	Patrick, Russell D.....	14, 24
Muskogee FSC.....	23	Pauls Valley FSC.....	26
Mustain, John W.....	2	Pauls Valley TSO.....	38
Mustain, Joni S.....	3	Pauls Valley WO.....	38
Nation, Diane.....	8	Pawhuska FSC.....	26
Neal, Birdie D.....	2	Pawnee Co. CD.....	27
Nelson, Brad.....	14	Pawnee County.....	27
Neumeyer, Donna R.....	24	Pawnee FSC.....	27
Neumeyer, J. Thomas.....	29	Payne Co. CD.....	30
Newkirk FSC.....	24	Payne County.....	30
Newman, Marilyn.....	9	Payne, Lisa A.....	19
Newton, Jared S.....	23	Pearson II, Jackie L.....	38
Nickel, Sheri.....	15	Perry FSC.....	27
Niece, Rita.....	16	Perry TSO.....	39
Noble Co. CD.....	27	Perry WO.....	39

OKLAHOMA PERSONNEL DIRECTORY

Peterson, J. D'Ann	17	Schlegel, N. Rick	3, 40
Peterson, Russell W.	27	Schmidt, Kathy	17
Pietz-Jones, Brandy A.	37, 46	Schmidt, Ronald E.	13
Pigg, Darlene	32	Schneider, Joe.....	20
Pittsburg Co. CD	22	Schneider, Scott	37
Pittsburg County	22	Schoolfield, Paul L.....	31
Pontotoc Co. CD	7	Schreiner, J. Kirk	21
Pontotoc County	7	Schreiner, Tony R.....	16
Pool, Kaleb A.	22	Scott, Gregory F.	4, 46
Porter, Billy R.	1, 4, 45	Scott, Jerry D.	37
Poteau FSC	27	Searcy, Jewell A.	35
Pottawatomie County.....	29	Seminole Co. CD.....	35
Potter, Tracy R.....	3	Seminole County	20, 35
Pottawatomie County.....	20	Sequoyah Co. CD.....	28
Price, Jerrod T.	8	Sequoyah County	28
Programs Staff	3	Sexton, Candye	25
Pryor FSC	28	Shaffer, James E.	40
Public Affairs Staff.....	4	Shaw, Rodney C.....	25
Puffinbarger, Kayla J.....	11	Shawnee CD	29
Purcell FSC.....	28	Shawnee Field Office	29
Pushmataha Co. CD	8	Shawnee FSC	29
Pushmataha County	31	Sheik, Michael J.	15
Pushmataha County	8	Shepherd, Chris W.	34
Qualls, Andrew T.	23	Shotts, Kevin N.	12
Rackley, Emmet M.....	17	Sites, Cassandra L.	2
Ragge, Michelle A.....	32	Slowik, Victor W.....	3, 45
Ramming, Michael J.	23	Smith, Daniel R.....	39
Reavis, Brandon L.	26	Smith, Jennifer S.	18
Reavis, Manuel B.....	18	Smith, Ronald D.	38
Redding, Becka D.....	1	Smith, T. Carl.....	42
Rhea, Ashley D.	20	Soderstrom, Gary D.....	39
Rice, Fredia.....	33	Soderstrom, Tricia K.....	11
Richard, Christina	10, 42	Soil Science Staff	4
Riley, Stacy M.	7	Soukup, Cambra K.	3
Risenhoover, Kenneth R.....	27	South Caddo Co. CD.....	8
Ritzman, Gregory L.....	33	Sparks, Jolene.....	27
Roach, Merrie S.....	2	Stafford, Donna M.	6
Roberts, Shirley K.....	4	Stanford, Amanda R.	27
Robertson, Greg	19	Starkey, Jerry G.....	30
Roger Mills County.....	12	State Conservationists Staff	1
Rogers Co. CD.....	12	Stephens Co. CD.....	14
Rogers County	12	Stephens County	14
Rogers Jr, Charles C.	26	Stephens, Karla R.	22
Rogers, Douglas W.....	29	Stewart, Janet M.....	5
Rose, Christine	20	Stewart, Teresa D.....	1, 45
Ruark, Debra R.	2	Stigler FSC	29
Rushing, Lynda.....	15	Stillwater FSC	30
Salisbury, Clay D.	37	Stillwater SSO	39
Sallisaw FSC.....	28	Stilwell FSC	30
Sand, Heath A.....	3, 45	Stinchcomb Jr, Joe E.....	11
Sanders, Warren R.	22	Stipe, Dennis W.	40
Sauer, Lisa.....	6	Stone, Caleb J.	24
Sayre FSC	29	Stone, Lonette	24
Scaggs, Jason	15	Stoner, J. Chris.....	3, 45, 46

OKLAHOMA PERSONNEL DIRECTORY

Sulphur FSC	30	Waltman, Brenda	24
Surber, Dee	12	Walton, Roy J.	16
Swartwood, Jerry W.	12	Ward, Cindy	26
Swift, Kenneth W.	19	Ward, Cynthia D.	8
Tahlequah FSC	31	Ward, Matt A.	36
Talihina CD	31	Ware, Dennis K.	31
Talihina Field Office	31	Warren, Ronnie J.	7
Tallgrass RC&D Office	42	Warren, Wade A.	27
Taloga FSC	31	Washburn, Curtis L.	8, 38
Tate, Kyle	22	Washington County	14
Taylor, Brooke A.	40	Washita Co. CD	13
Teague, Melissa R.	18	Washita County	34
Templeton, Paula F.	33	Washita County	13, 23
Texas Co. CD	17	Water Resources Staff	4
Texas County	17	Watonga FSC	34
Theis, Becky	21	Watts, Craig E.	38
Thielke, Matthew A.	11	Waurika FSC	34
Thomas, Tara R.	13	Weatherford Field Office	34
Thompson, Alfred R.	33	Weathers, Amy	17
Thompson, Melissa S.	33	Weaver Jr, William E.	28
Till, Michael	34	Wells, David B.	37
Tillman Co. CD	16	Wells, Nena	12
Tillman County	16	West Caddo CD	16
Tillman, Bobby L.	4	West, Rylan J.	10
Tishomingo FSC	32	Wewoka FSC	35
Townsley, George K.	4	Whaley, Danielle D.	8
Townsley, Jody G.	2	Wheatland RC&D Office	42
Tripp, Trampas W.	20	White, Bryan S.	31
Trujillo, Freddy J.	32	White, Jean	12
Tucker, Andrew I.	41	White, Michael K.	38
Tucker, Nelda J.	29	Whited, Kiley R.	10
Tully, Stephen R.	2	Wilburton FSC	35
Tulsa Co. CD	32	Williams, Angela S.	41
Tulsa County	32	Williams, James S.	8
Tulsa FSC	32	Williams, Melissa	13
Turner, Denise B.	11	Wilson, James R.	18
Ulrich, Joseph E.	13	Wilson, Thomas E.	18
Upper Washita CD	12	Wingfield, Randall C.	14
USDA / OCIO ITS – Oklahoma Staff	6	Winslett, Charles A.	21
USDA/NRCS Liaison Office	5	Witvoet, Lorie Casey	41
Utleigh, Gary W.	4	Wood II, James D.	1, 45
Valliant CD	32	Woods County	7
Valliant Field Office	32	Woods County	16
Van Wyk, Michael L	9	Woods County CD	16
Vielma, Jose A.	27	Woods Jr, Carl E.	37
Viles, Sammy L.	22, 46	Woodward Co. CD	35
Vinita FSC	33	Woodward County	35
Vongkhamdy, Phoukham	1, 45, 46	Woodward FSC	35
Wagoner Co. CD	33	Woodward SSO	40
Wagoner County	33	Woodward TSO	40
Wagoner FSC	33	Worley, Jacob W.	15
Walker, Kim R.	12	Worley, Lisel K.	23
Walker, LouAnn	6	Wright, Larry W.	41
Walters FSC	33	Wright, Russell A.	13

OKLAHOMA PERSONNEL DIRECTORY

Wright, Teresa D.....	22	Zarek, Amanda M.	10
Wright, Tony L.....	24	Zetterberg, Richard D.	3
York, Richard B.....	21	Zone Administrative Staff	4
Young, Lisa.....	34	Zweiacker, Loran L.	27
Yundt, Martin E.	27		