



**US Army Corps  
of Engineers** ®  
New England District

696 Virginia Road  
Concord, MA 01742-2751

# PUBLIC NOTICE

**Date:** March 27, 2007  
**Comment Period Ends:** April 25, 2007  
**File Number:** NAE-2005-350  
**In Reply Refer To:** Kevin R. Kotelly, P.E.  
**Or by e-mail:** kevin.r.kotelly@usace.army.mil

The District Engineer has received a permit application from the applicant below to **conduct work in waters of the United States** as described below. The Corps is soliciting comments on both the project itself and the range of issues to be addressed in the environmental documentation.

## APPLICANT

Siasconset Beach Preservation Fund

## ACTIVITY

A detailed description and plans of the applicant's activity are attached.

## WATERWAY AND LOCATION OF THE PROPOSED WORK

This work is proposed in the Atlantic Ocean along and off the coast of Sconset Beach in Nantucket, Massachusetts. The proposed location on the USGS Nantucket quadrangle sheet is at UTM coordinates 41°16'16" N and 69°57'32" E.

## AUTHORITY

Permits are required pursuant to:

- Section 10 of the Rivers and Harbors Act of 1899
- Section 404 of the Clean Water Act
- Section 103 of the Marine Protection, Research and Sanctuaries Act).

The decision whether to issue a permit will be based on an evaluation of the probable impact of the proposed activity on the public interest. That decision will reflect the national concern for both protection and utilization of important resources. The benefit which may reasonably accrue from the proposal must be balanced against its reasonably foreseeable detriments. All factors which may be relevant to the proposal will be considered, including the cumulative effects thereof; among those are: conservation, economics, aesthetics, general environmental concerns, wetlands, cultural value, fish and wildlife values, flood hazards, flood plain value, land use, navigation, shoreline erosion and accretion, recreation, water supply and conservation, water quality, energy needs, safety, food production and, in general, the needs and welfare of the people.

The Corps of Engineers is soliciting comments from the public; Federal, state, and local agencies and officials; Indian Tribes; and other interested parties in order to consider and evaluate the impacts of this proposed activity. Any comments received will be considered by the Corps of Engineers to determine whether to issue, modify, condition or deny a permit for this proposal. To make this decision, comments are used to assess impacts on endangered species, historic properties, water quality, general environmental effects, and the other public interest factors listed above. Comments are used in the preparation of an Environmental Assessment

**CENAE-R-PEA**  
**FILE NO. NAE-2005-350**

and/or an Environmental Impact Statement pursuant to the National Environmental Policy Act. Comments are also used to determine the need for a public hearing and to determine the overall public interest of the proposed activity.

Where the activity involves the discharge of dredged or fill material into waters of the United States or the transportation of dredged material for the purpose of disposing it in ocean waters, the evaluation of the impact of the activity in the public interest will also include application of the guidelines promulgated by the Administrator, U.S Environmental Protection Agency, under authority of Section 404(b) of the Clean Water Act, and/or Section 103 of the Marine Protection Research and Sanctuaries Act of 1972 as amended.

**ESSENTIAL FISH HABITAT**

The Magnuson-Stevens Fishery Conservation and Management Act, as amended by the Sustainable Fisheries Act of 1996 (Public Law 104-267), requires all federal agencies to consult with the National Marine Fisheries Service on all actions, or proposed actions, permitted, funded, or undertaken by the agency, that may adversely affect Essential Fish Habitat (EFH).

This project will have an adverse effect on approximately 492 acres of Essential Fish Habitat (EFH) for various life stages of Atlantic cod (*Gadus morhua*), haddock (*Melanogrammus aeglefinus*), winter flounder (*Pleuronectes americanus*), Atlantic halibut (*Hippoglossus hippoglossus*), monkfish (*Lophius americanus*), long finned squid (*Loligo pealei*), short finned squid (*Illex illecebrosus*), Atlantic butterfish (*Peprilus triacanthus*), Atlantic mackerel (*Scomber scombrus*), summer flounder (*Paralichthys dentatus*), scup (*Stenotomus chrysops*), black sea bass (*Centropristus striata*), surf clam (*Spisula solidissima*), blue shark (*Prionace glauca*), and bluefin tuna (*Thunnus thynnus*).

The dredging portion of this project will impact approximately 195 acres of Essential Fish Habitat (EFH) for the species listed above. Habitat at this site can be described as subtidal sandy shoal. Loss of this habitat may adversely affect the species listed above.

The dredged material disposal segment of this project will impact approximately 297 acres of EFH for the species listed above. The dredged material disposal is proposed for Sconset Beach, Nantucket, Massachusetts, as beach nourishment. Habitat at this site consists of 9.6 acres of intertidal and 287.3 acres of subtidal habitat. Of the subtidal area, approximately 105 acres is cobble/sand bottom and 29.5 acres is hard bottom, with the rest being sandy bottom. Loss of this habitat may adversely affect the species listed above.

The District Engineer has made a preliminary determination that site-specific impacts may be substantial. Accordingly, the Corps of Engineers will submit an expanded EFH assessment to National Marine Fisheries Service, who in turn will provide conservation recommendations to the Corps. The Corps will coordinate with the applicant regarding implementation of these recommendations. The EFH consultation will be concluded prior to the final decision.

**SECTION 106 COORDINATION**

Based on his initial review, the District Engineer has determined that the proposed work may impact properties listed in, or eligible for listing in, the National Register of Historic Places. Additional review and consultation to fulfil requirements under Section 106 of the National Historic Preservation Act of 1966, as amended, will be ongoing as part of the permit review process.

**ENDANGERED SPECIES CONSULTATION**

The New England District, Army Corps of Engineers has reviewed the list of species protected under the Endangered Species Act of 1973, as amended, which might occur at the proposed project site during the construction and subsequent operation/use period sought by the applicant. We will be undertaking a Biological Assessment (BA) of the potential for interactions and adverse impacts to those listed species. Consultation to fulfil requirements under Section 7 of the Endangered Species Act will be conducted with the National Marine Fisheries Service and the U.S. Fish and Wildlife Service as part of the permit review process.

The following authorizations have been applied for, or have been, or will be obtained:

- (X) Permit, License or Assent from State.
- (X) Permit from Local Wetland Agency or Conservation Commission.
- (X) Water Quality Certification in accordance with Section 401 of the Clean Water Act.

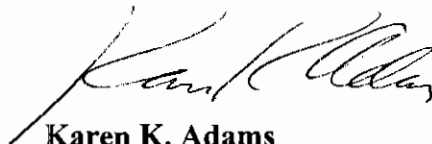
In order to properly evaluate the proposal, we are seeking public comment. Anyone wishing to comment is encouraged to do so. **Comments should be submitted in writing by the above date.** If you have any questions, please contact Kevin R. Kotelly, P.E. at (978) 318-8703, (800) 343-4789 or (800) 362-4367, if calling from within Massachusetts.

Any person may request, in writing, within the comment period specified in this notice, that a public hearing be held to consider the application. Requests for a public hearing shall specifically state the reasons for holding a public hearing. The Corps holds public hearings for the purpose of obtaining public comments when that is the best means for understanding a wide variety of concerns from a diverse segment of the public.

The initial determinations made herein will be reviewed in light of facts submitted in response to this notice. All comments will be considered a matter of public record. Copies of letters of objection will be forwarded to the applicant who will normally be requested to contact objectors directly in an effort to reach an understanding.

For more information on the New England District Corps of Engineers programs, visit our website at <http://www.nae.usace.army.mil>.

**THIS NOTICE IS NOT AN AUTHORIZATION TO DO ANY WORK.**



**Karen K. Adams**  
**Chief, Permits and Enforcement Branch**  
**Regulatory Division**

**CENAE-R-PEA**  
**FILE NO. NAE-2005-350**

If you would prefer not to continue receiving Public Notices, please contact Ms. Tina Chaisson at (978) 318-8058 or e-mail her at [bettina.m.chaisson@usace.army.mil](mailto:bettina.m.chaisson@usace.army.mil). You may also check here ( ) and return this portion of the Public Notice to: Bettina Chaisson, Regulatory Division, U.S. Army Corps of Engineers, 696 Virginia Road, Concord, MA 01742-2751.

NAME: \_\_\_\_\_  
ADDRESS: \_\_\_\_\_

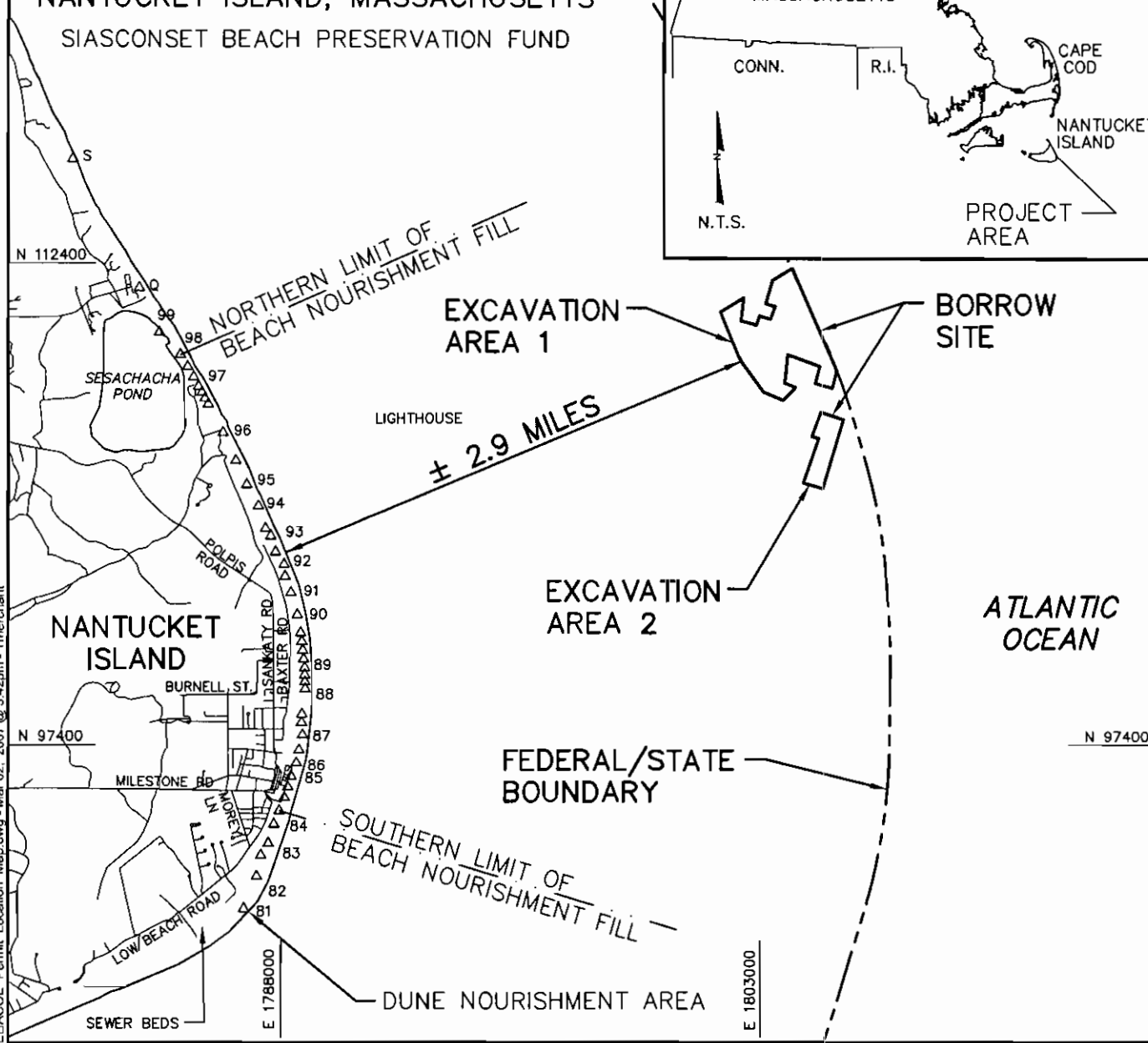
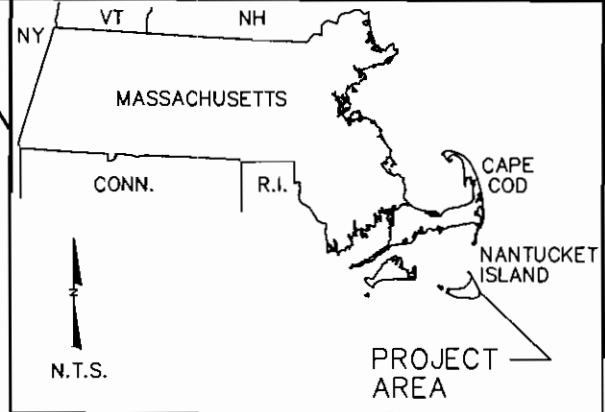
**PROPOSED WORK AND PURPOSE**

The proposed project involves work below the mean high water line and the discharge of dredged or fill material into waters of the United States in order to construct a large-scale beach nourishment project proposed to protect approximately 3.1 miles of eroding coast along the eastern shoreline of Nantucket Island, Massachusetts. Approximately 2.6 million cubic yards of beach compatible sediment would be hydraulically dredged from a 195 acre offshore borrow site located approximately 2.9 miles east of Nantucket in water that is 30 to 60 feet deep. The material would then be transported to Sconset Beach in Nantucket and pumped onto the project shoreline from a barge or dredge as a sand/water slurry.

The project will provide beach and dune nourishment for approximately 3.1 miles of shoreline of Nantucket extending south from Sesachacha Pond, past Sankaty Head Lighthouse to Codfish Park and the village of Siasconset, and includes dune restoration at Codfish Park and dune construction at the Town Sewer Beds. The design calls for 2.7 miles of beach nourishment coupled with 0.35 miles of dune restoration/creation with 1,100 feet at Codfish Park and 800 feet at the Town Sewer Beds. Project construction is scheduled to occur during the months of June to November.

The proposed beach nourishment will fill approximately 9.6 acres of the nearshore intertidal zone and 109.9 acres of the nearshore subtidal zone. After equilibration of the beach, an additional 177.4 acres of the nearshore subtidal zone will be covered for a total of 287.3 acres if subtidal zone. Within the subtidal area, approximately 105 acres of cobble/sand bottom and 29.5 acres of hard bottom will be covered with the beach nourishment material. The work is described on the enclosed plans entitled "Sconset Beach Nourishment Project," on 19 sheets, and dated, "March 2, 2007."

SCONSET BEACH  
NOURISHMENT PROJECT  
NANTUCKET ISLAND, MASSACHUSETTS  
SIASCONSET BEACH PRESERVATION FUND

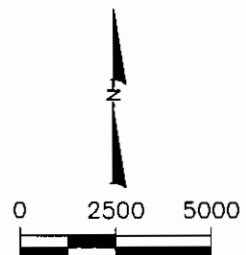


SCONSET BEACH NOURISHMENT PROJECT  
LOCATION MAP

COASTAL PLANNING & ENGINEERING, INC.  
3481 N.W. BOCA RATON BOULEVARD  
BOCA RATON, FLORIDA 33431  
PH: (561) 361-8102  
FAX: (561) 391-8116  
www.CoastalPlanning.net

SHEET INDEX

NO.	TITLE
1	PROJECT LOCATION MAP
2-6	EXISTING PROJECT PLAN VIEWS
7-11	PROPOSED PROJECT PLAN VIEWS
12-14	TYPICAL FILL PROFILES
15-17	PROPERTY OWNERSHIP MAP
18	PROPERTY OWNERS AND LOT NUMBERS
19	BORROW SITE PLAN VIEW
20-23	BORROW SITE CROSS SECTION



NOT FOR CONSTRUCTION  
FOR REGULATORY REVIEW ONLY

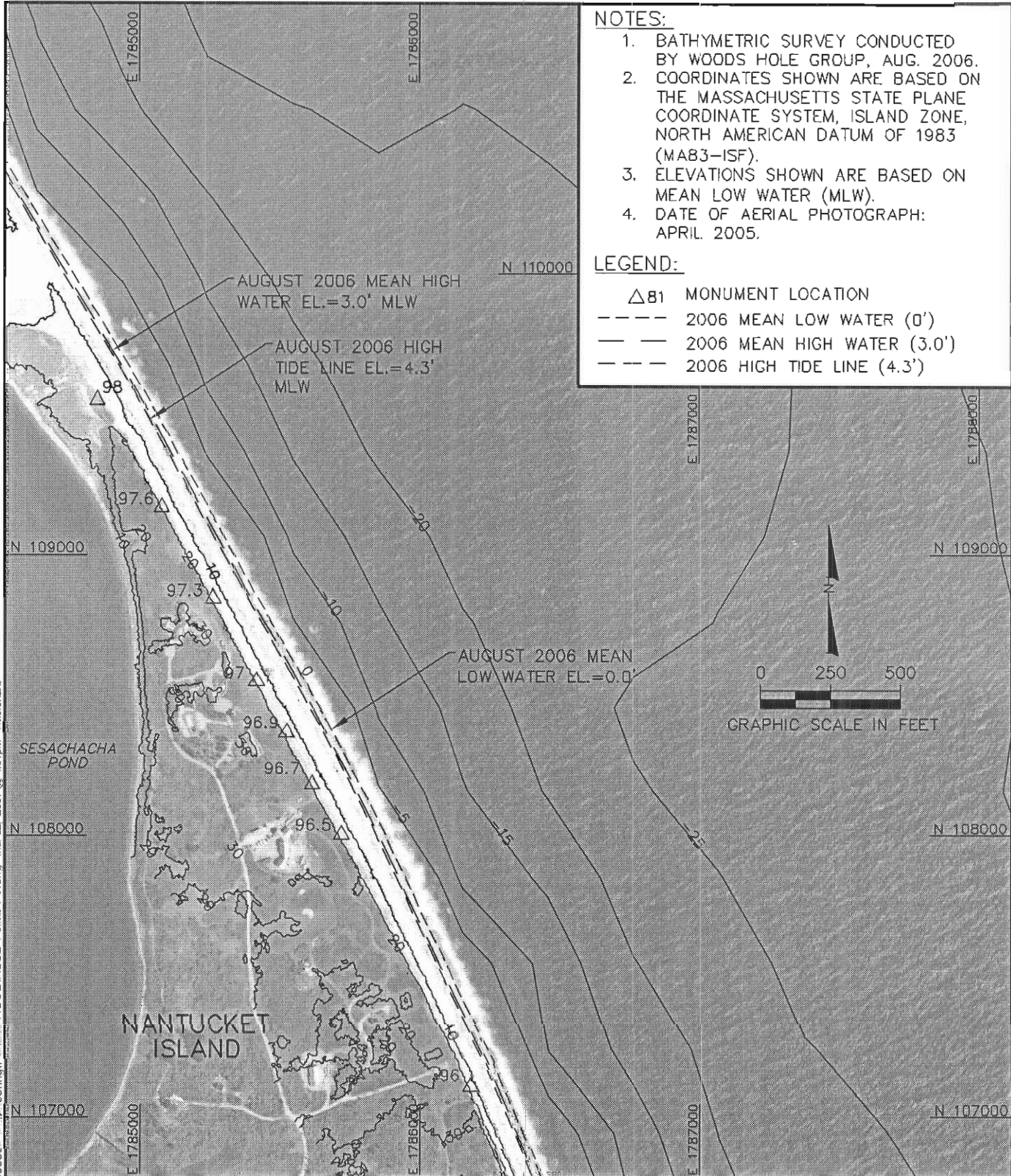
NAME \_\_\_\_\_ DATE \_\_\_\_\_

REVISIONS		
DATE	BY	DESCRIPTION
7/22/07	AMB	FINALIZE BORROW SITE DESIGN

DATE: 03/02/07  
BY: TDM  
COMM NO.: 9900.00  
SHEET: 1

H:\Massachusetts\Nantucket\_990000-Engineering\_Permits-ACOE\ACOE\_Permit\_Location\_Map.dwg - Mar 02, 2007 @ 3:42pm - Tmerchant

H:\Massachusetts\Nantucket\1950000-Engineering\Permits-ACOE\ADOE Permitt. PV chg - Mar 02 2007 @ 4:01pm - Inrechar



- NOTES:**
1. BATHYMETRIC SURVEY CONDUCTED BY WOODS HOLE GROUP, AUG. 2006.
  2. COORDINATES SHOWN ARE BASED ON THE MASSACHUSETTS STATE PLANE COORDINATE SYSTEM, ISLAND ZONE, NORTH AMERICAN DATUM OF 1983 (MAB3-ISF).
  3. ELEVATIONS SHOWN ARE BASED ON MEAN LOW WATER (MLW).
  4. DATE OF AERIAL PHOTOGRAPH: APRIL 2005.
- LEGEND:**
- △81 MONUMENT LOCATION
  - 2006 MEAN LOW WATER (0')
  - 2006 MEAN HIGH WATER (3.0')
  - - - 2006 HIGH TIDE LINE (4.3')

SCONSET BEACH NOURISHMENT PROJECT  
RECENT EXISTING WATER LINE POSITIONS - STATION 98 TO 96

MATCHLINE - SEE SHEET 3

NOT FOR CONSTRUCTION  
FOR REGULATORY REVIEW ONLY

REVISIONS		
DATE	BY	DESCRIPTION

**COASTAL PLANNING & ENGINEERING, INC.**  
 2451 N.W. 80th AVE, SUITE 402  
 BOCA RATON, FLORIDA 33431  
 P: (561) 381-4102  
 F: (561) 381-4116  
 www.CPE-ai.com



DATE:  
103/02/07

TDM  
 COMM. NO.:  
9900.00  
 SHEET:  
2

NAME \_\_\_\_\_ DATE \_\_\_\_\_

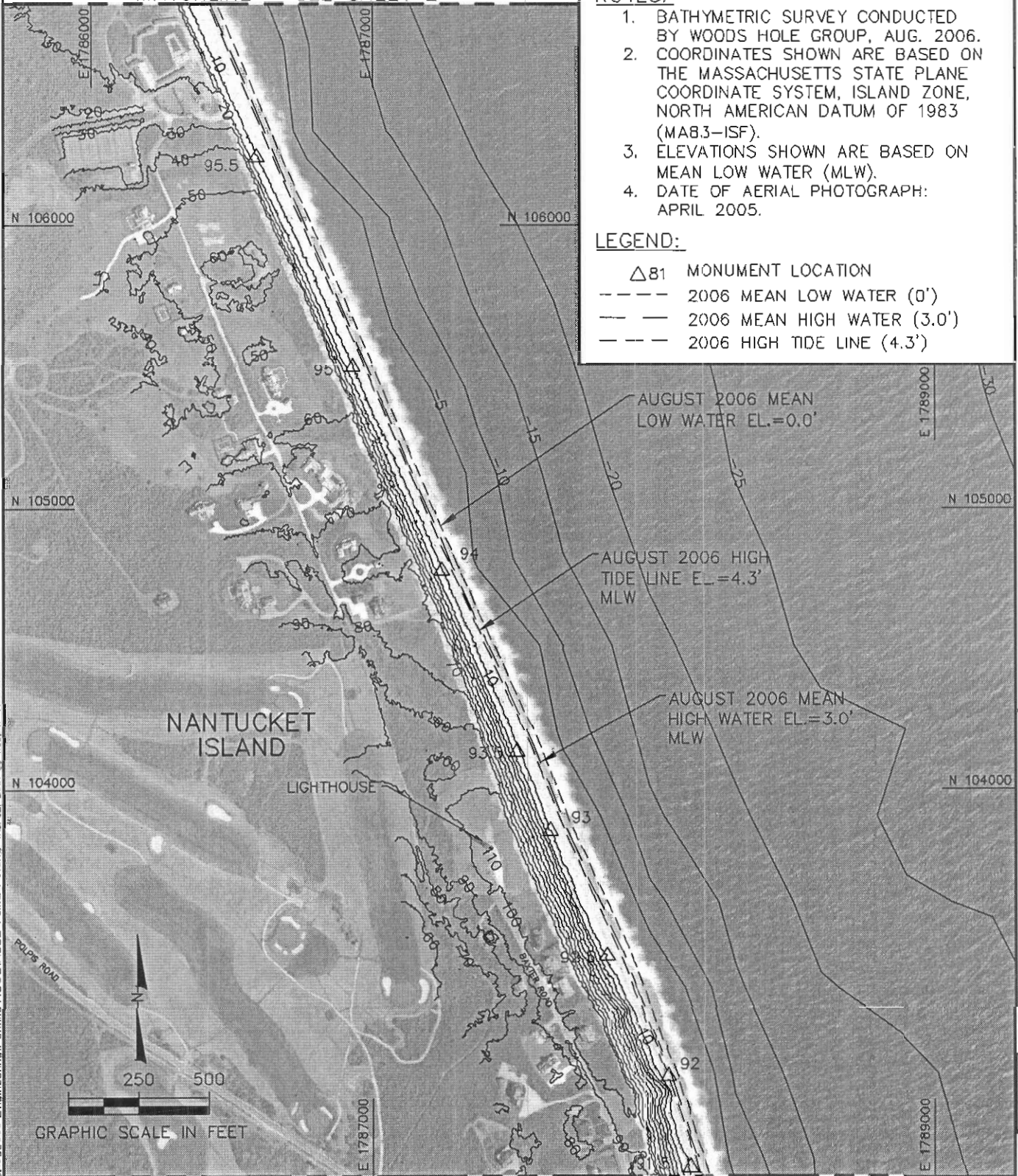
MATCHLINE - SEE SHEET 2

**NOTES:**

1. BATHYMETRIC SURVEY CONDUCTED BY WOODS HOLE GROUP, AUG. 2006.
2. COORDINATES SHOWN ARE BASED ON THE MASSACHUSETTS STATE PLANE COORDINATE SYSTEM, ISLAND ZONE, NORTH AMERICAN DATUM OF 1983 (MA83-ISF).
3. ELEVATIONS SHOWN ARE BASED ON MEAN LOW WATER (MLW).
4. DATE OF AERIAL PHOTOGRAPH: APRIL 2005.

**LEGEND:**

- △81 MONUMENT LOCATION
- - - - 2006 MEAN LOW WATER (0')
- - - - 2006 MEAN HIGH WATER (3.0')
- - - - 2006 HIGH TIDE LINE (4.3')



MATCHLINE - SEE SHEET 4

NOT FOR CONSTRUCTION  
FOR REGULATORY REVIEW ONLY

REVISIONS		
DATE	BY	DESCRIPTION

**SCONSET BEACH NOURISHMENT PROJECT**  
**RECENT EXISTING WATER LINE POSITIONS - STATION 95.5 TO 91.5**

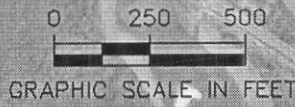
**COASTAL PLANNING & ENGINEERING, INC.**  
 2431 N.W. BOCA RATON BOULEVARD  
 BOCA RATON, FLORIDA 33431  
 P11 (661) 391-1102  
 FAX (661) 391-1116  
[www.CoastalPlanning.com](http://www.CoastalPlanning.com)



DATE:  
03/02/07

BY:  
TDM  
 COMM NO.:  
99100.00  
 SHEET:  
3

H:\Massachusetts\Nantucket\1990000-Engineering\Permits-ACOE\ACOE Permit PV.dwg - Mar 02, 2007 @ 4:03pm - Trenchant



NAME \_\_\_\_\_ DATE \_\_\_\_\_



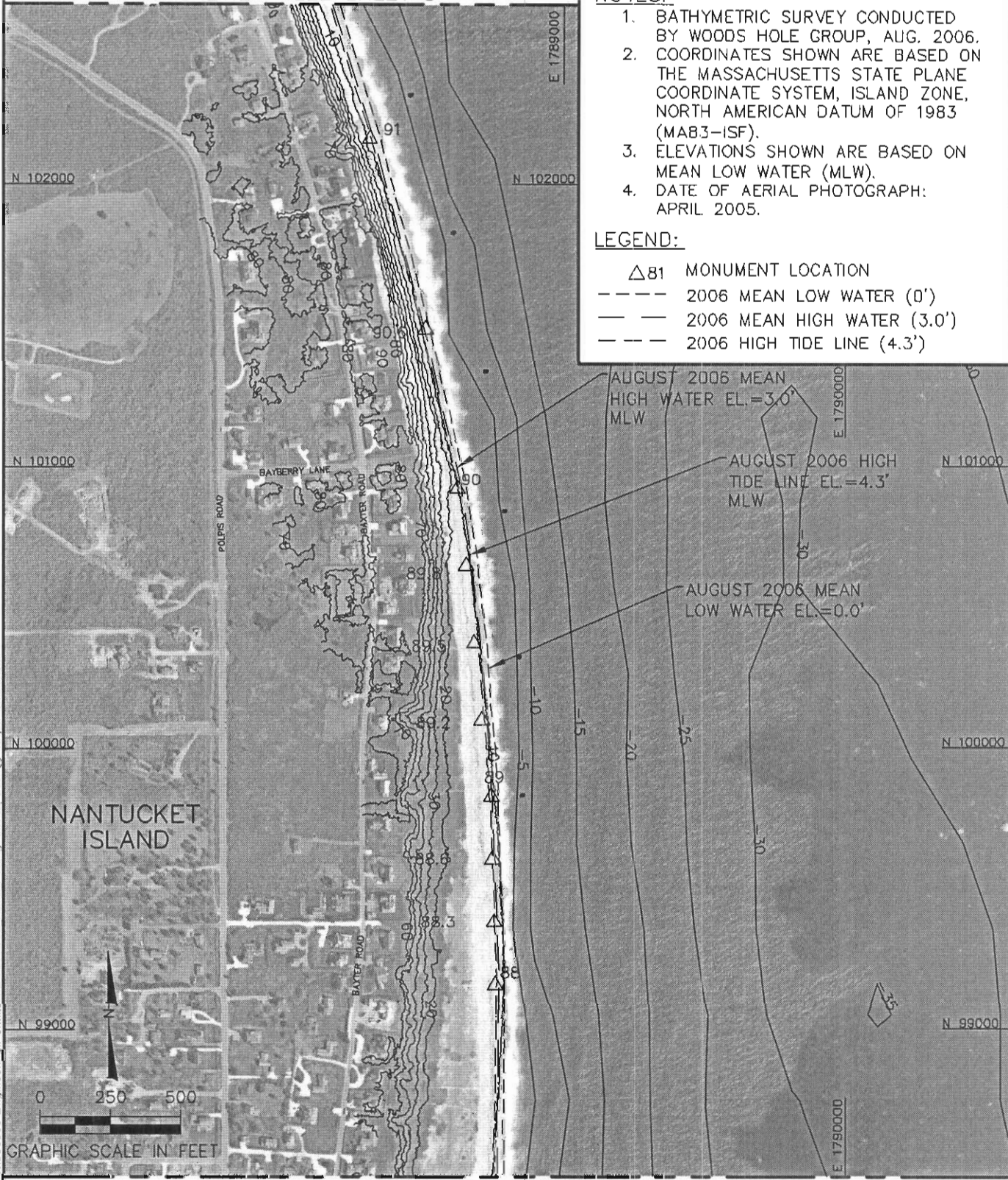
MATCHLINE - SEE SHEET 3

**NOTES:**

1. BATHYMETRIC SURVEY CONDUCTED BY WOODS HOLE GROUP, AUG. 2006.
2. COORDINATES SHOWN ARE BASED ON THE MASSACHUSETTS STATE PLANE COORDINATE SYSTEM, ISLAND ZONE, NORTH AMERICAN DATUM OF 1983 (MAB3-ISF).
3. ELEVATIONS SHOWN ARE BASED ON MEAN LOW WATER (MLW).
4. DATE OF AERIAL PHOTOGRAPH: APRIL 2005.

**LEGEND:**

- △81 MONUMENT LOCATION
- - - - 2006 MEAN LOW WATER (0')
- — — 2006 MEAN HIGH WATER (3.0')
- - - - 2006 HIGH TIDE LINE (4.3')



**SCONSET BEACH NOURISHMENT PROJECT**  
**RECENT EXISTING WATER LINE POSITIONS - STATION 91 TO 88**

H:\Massachusetts\Nantucket\1900000-Engineering\Permits-ACO\E\ACOE Permitt\_PV.dwg - Mar 02, 2007 @ 4:04pm - Trenchant

**COASTAL PLANNING & ENGINEERING, INC.**  
 2481 N.W. BOCA RATON BOULEVARD  
 BOCA RATON, FL 33433-3001  
 P 11 561-394-6000  
 F 561-394-6001  
 www.CoastalPlanning.com



DATE:  
03/02/07

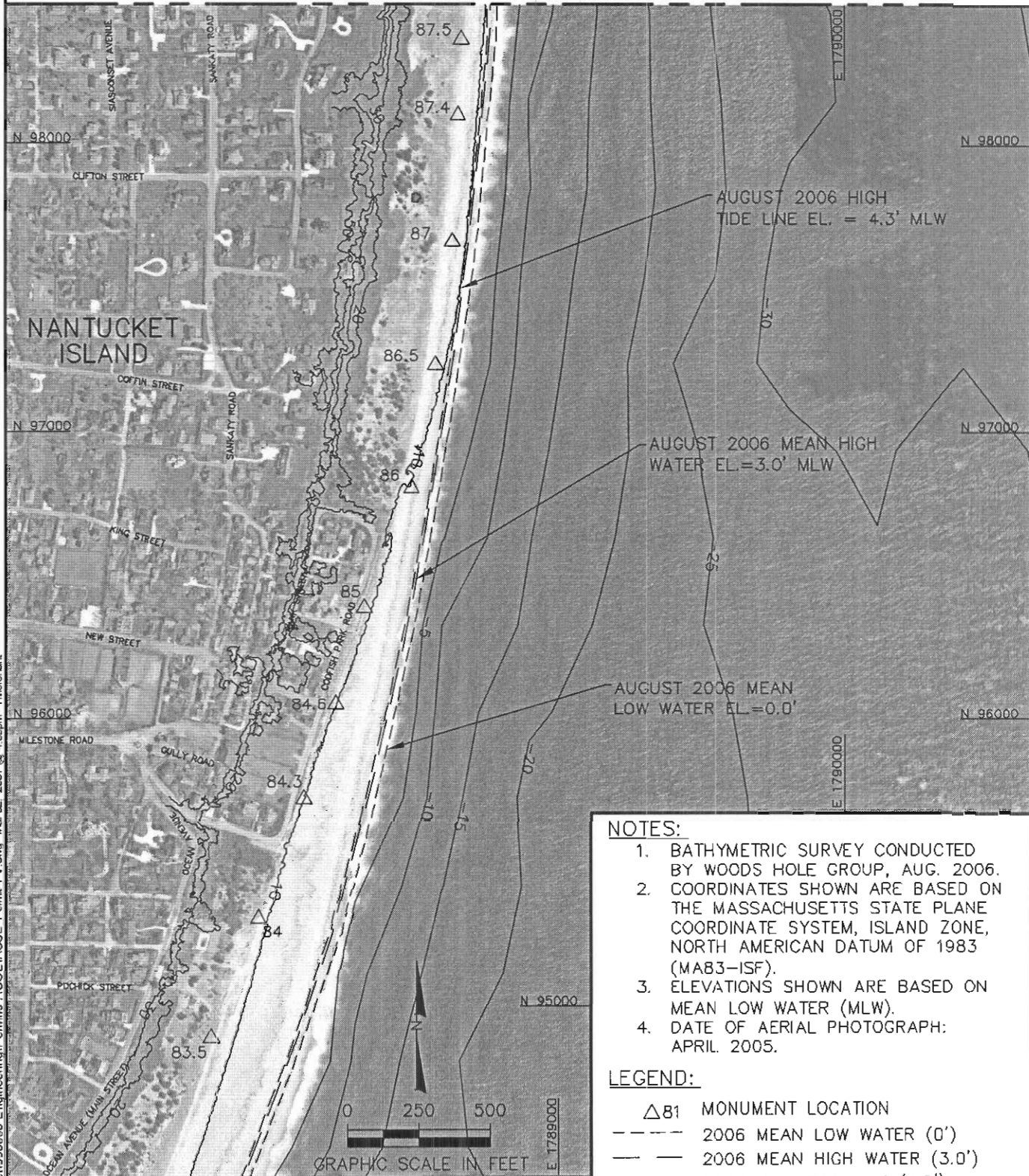
BY: TDM  
 COMM NO.: 9900.00  
 SHEET: 4

**NOT FOR CONSTRUCTION  
 FOR REGULATORY REVIEW ONLY**

REVISIONS		
DATE	BY	DESCRIPTION

NAME \_\_\_\_\_ DATE \_\_\_\_\_

MATCHLINE - SEE SHEET 4



**NOTES:**

1. BATHYMETRIC SURVEY CONDUCTED BY WOODS HOLE GROUP, AUG. 2006.
2. COORDINATES SHOWN ARE BASED ON THE MASSACHUSETTS STATE PLANE COORDINATE SYSTEM, ISLAND ZONE, NORTH AMERICAN DATUM OF 1983 (MAB3-ISF).
3. ELEVATIONS SHOWN ARE BASED ON MEAN LOW WATER (MLW).
4. DATE OF AERIAL PHOTOGRAPH: APRIL, 2005.

**LEGEND:**

- △ 81 MONUMENT LOCATION
- 2006 MEAN LOW WATER (0')
- 2006 MEAN HIGH WATER (3.0')
- - - 2006 HIGH TIDE LINE (4.3')

MATCHLINE - SEE SHEET 6

NOT FOR CONSTRUCTION  
FOR REGULATORY REVIEW ONLY

NAME \_\_\_\_\_

DATE \_\_\_\_\_

REVISIONS		
DATE	BY	DESCRIPTION

**SCONSET BEACH NOURISHMENT PROJECT**  
**RECENT EXISTING WATER LINE POSITIONS - STATION 87.5 TO 83.5**

**COASTAL PLANNING & ENGINEERING, INC.**  
 3481 W. 80CA SAND HOLLOWARD  
 80CA RATOR, F030803361  
 www.CoastalPlanning.net  
 TEL (508) 391-4102  
 FAX (508) 391-4116



DATE: 03/02/07

BY: TDM

COMM NO.: 9900.00

SHEET: 5

H:\Massachusetts\Nantucket\1990000-E\engineering\Permits-ACOE\ACOE Permt. PV.dwg - Mar 02, 2007 @ 4:05pm - Trenchant

MATCHLINE - SEE SHEET 5



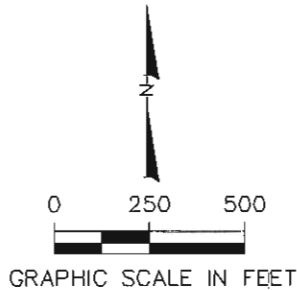
**SCONSET BEACH NOURISHMENT PROJECT**  
**RECENT EXISTING WATER LINE POSITIONS - STATION 83 TO 81**

**NOTES:**

1. BATHYMETRIC SURVEY CONDUCTED BY WOODS HOLE GROUP, AUG. 2006.
2. COORDINATES SHOWN ARE BASED ON THE MASSACHUSETTS STATE PLANE COORDINATE SYSTEM, ISLAND ZONE, NORTH AMERICAN DATUM OF 1983 (MAB3-ISF).
3. ELEVATIONS SHOWN ARE BASED ON MEAN LOW WATER (MLW).
4. DATE OF AERIAL PHOTOGRAPH: APRIL 2005.

**LEGEND:**

- 81 MONUMENT LOCATION
- 2006 MEAN LOW WATER (0')
- 2006 MEAN HIGH WATER (3.0')
- 2006 HIGH TIDE LINE (4.3')



**COASTAL PLANNING & ENGINEERING, INC.**  
 111 W. 80th ST., DANVERS, VERMONT  
 DANVERS, VT 05440  
 TEL: (802) 251-4100  
 FAX: (802) 251-4110  
[www.CoastalPlanning.com](http://www.CoastalPlanning.com)



DATE: 03/02/07  
 BY: TDM  
 COMM NO.: 9900.00  
 SHEET: 6

REVISIONS		
DATE	BY	DESCRIPTION

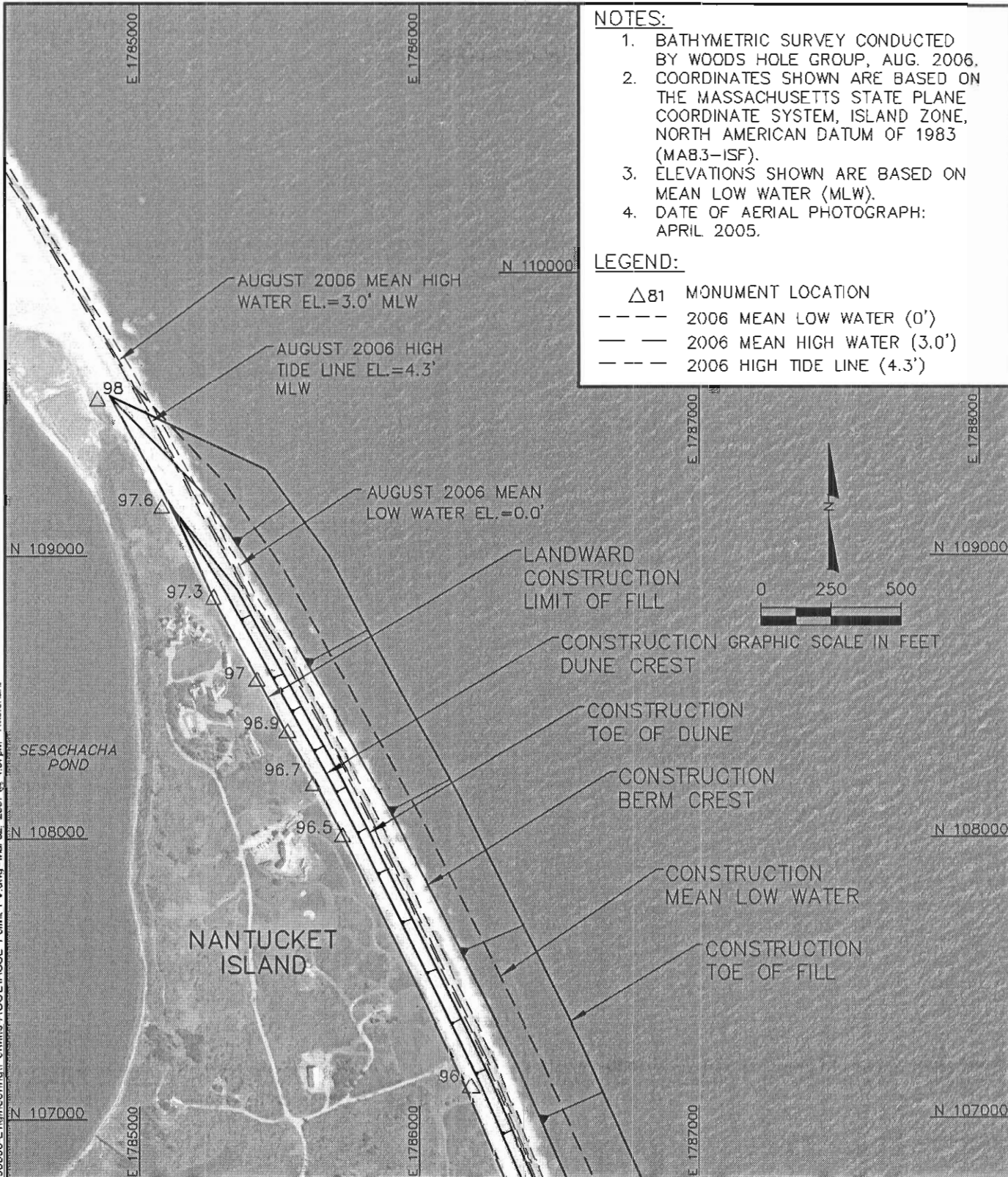
NOT FOR CONSTRUCTION  
FOR REGULATORY REVIEW ONLY

NAME \_\_\_\_\_

DATE \_\_\_\_\_

H:\Massachusetts\Nantucket\19900000-Engineering\Permits-ACOE\ACOE Permit\_PV.dwg - Mar 02, 2007 @ 4:06pm - Trenchant

H:\Massachusetts\Nantucket\190000-Engineering\Permits-ACOE\ACOE Permit PV.dwg - Mar 02, 2007 @ 4:07pm - Tmechart



- NOTES:**
1. BATHYMETRIC SURVEY CONDUCTED BY WOODS HOLE GROUP, AUG. 2006.
  2. COORDINATES SHOWN ARE BASED ON THE MASSACHUSETTS STATE PLANE COORDINATE SYSTEM, ISLAND ZONE, NORTH AMERICAN DATUM OF 1983 (MAB3-ISF).
  3. ELEVATIONS SHOWN ARE BASED ON MEAN LOW WATER (MLW).
  4. DATE OF AERIAL PHOTOGRAPH: APRIL 2005.

- LEGEND:**
- △81 MONUMENT LOCATION
  - 2006 MEAN LOW WATER (0')
  - 2006 MEAN HIGH WATER (3.0')
  - - - 2006 HIGH TIDE LINE (4.3')

**SCONSET BEACH NOURISHMENT PROJECT**  
**PROPOSED PROJECT PLAN VIEW - STATION 98 TO 96**

**COASTAL PLANNING & ENGINEERING, INC.**  
 P.O. Box 1105  
 2481 N.W. BOCA RATON BOULEVARD  
 BOCA RATON, FL 33433-1105  
 TEL: (561) 391-4716  
 FAX: (561) 391-4716  
 www.CoastalPlanEng.com



DATE:  
03/02/07

TDM  
 COMM NO.:  
 9900.00  
 SHEET:  
 7

MATCHLINE - SEE SHEET 8

NOT FOR CONSTRUCTION  
 FOR REGULATORY REVIEW ONLY

REVISIONS		
DATE	BY	DESCRIPTION

NAME \_\_\_\_\_ DATE \_\_\_\_\_

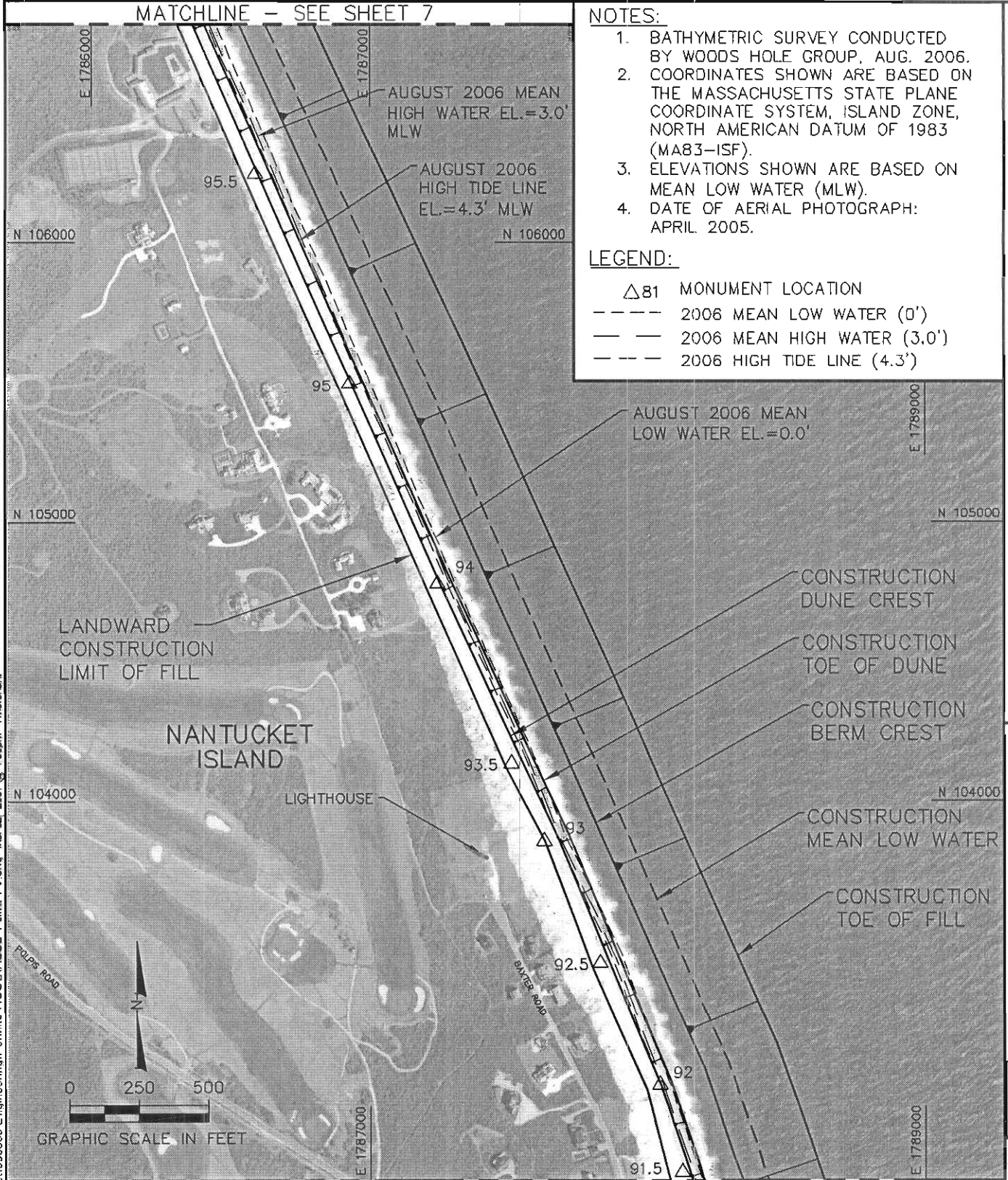
MATCHLINE - SEE SHEET 7

**NOTES:**

1. BATHYMETRIC SURVEY CONDUCTED BY WOODS HOLE GROUP, AUG. 2006.
2. COORDINATES SHOWN ARE BASED ON THE MASSACHUSETTS STATE PLANE COORDINATE SYSTEM, ISLAND ZONE, NORTH AMERICAN DATUM OF 1983 (MA83-ISF).
3. ELEVATIONS SHOWN ARE BASED ON MEAN LOW WATER (MLW).
4. DATE OF AERIAL PHOTOGRAPH: APRIL 2005.

**LEGEND:**

- △81 MONUMENT LOCATION
- - - - 2006 MEAN LOW WATER (0')
- — — 2006 MEAN HIGH WATER (3.0')
- - - - 2006 HIGH TIDE LINE (4.3')



MATCHLINE - SEE SHEET 9

**SCONSET BEACH NOURISHMENT PROJECT  
 PROPOSED PROJECT PLAN VIEW - STATION 95.5 TO 91.5**

**COASTAL PLANNING & ENGINEERING, INC.**  
 2481 N.W. BOCA RATON BOULEVARD  
 BOCA RATON, FLORIDA 33431  
 www.CoastalPlanning.com

P: (561) 991-4102  
 F: (561) 991-9116



DATE:  
03/02/07

BY:  
TDM

COMM NO.:  
9900.00

SHEET:  
8

**NOT FOR CONSTRUCTION  
 FOR REGULATORY REVIEW ONLY**

REVISIONS		
DATE	BY	DESCRIPTION

NAME \_\_\_\_\_

DATE \_\_\_\_\_

H:\Massachusetts\Nantucket\990000-Engineering\Permits-ACOE\ACOE Permits - PV.dwg - Mar 02, 2007 @ 4:08pm - Tmerchant

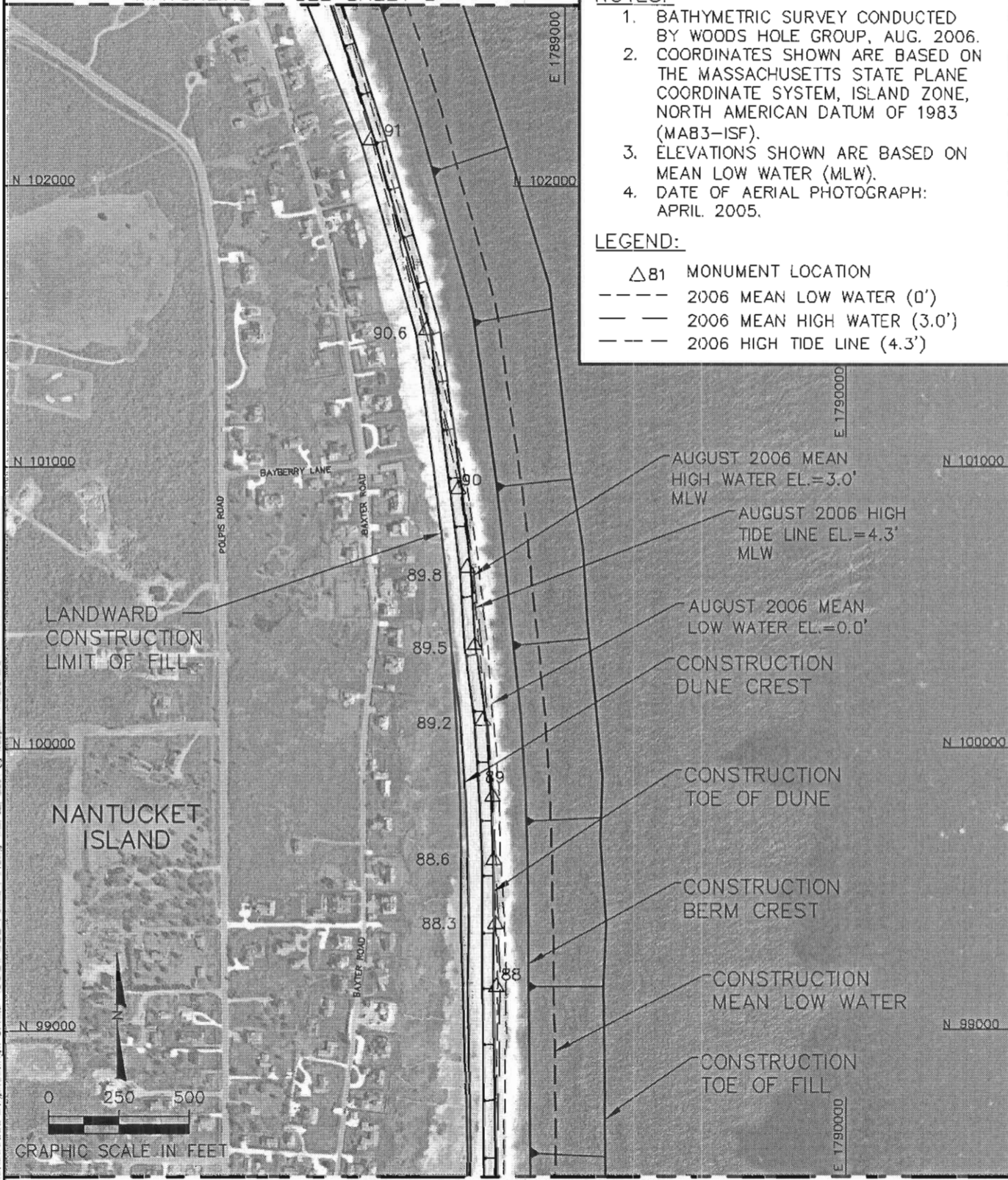
MATCHLINE - SEE SHEET 8

**NOTES:**

1. BATHYMETRIC SURVEY CONDUCTED BY WOODS HOLE GROUP, AUG. 2006.
2. COORDINATES SHOWN ARE BASED ON THE MASSACHUSETTS STATE PLANE COORDINATE SYSTEM, ISLAND ZONE, NORTH AMERICAN DATUM OF 1983 (MAB3-ISF).
3. ELEVATIONS SHOWN ARE BASED ON MEAN LOW WATER (MLW).
4. DATE OF AERIAL PHOTOGRAPH: APRIL 2005.

**LEGEND:**

- △81 MONUMENT LOCATION
- 2006 MEAN LOW WATER (0')
- 2006 MEAN HIGH WATER (3.0')
- - - 2006 HIGH TIDE LINE (4.3')



**SCONSET BEACH NOURISHMENT PROJECT  
 PROPOSED PROJECT PLAN VIEW - STATION 91 TO 88**

**COASTAL PLANNING & ENGINEERING, INC.**  
 P.O. BOX 1391  
 90 CA BAYVIEW BOULEVARD  
 BOSTON, MA 02116  
 TEL: (617) 351-4100  
 FAX: (617) 351-4116  
 www.CoastalPlanEng.com



DATE:  
03/02/07

BY:  
TDM

COM: M NO.:  
9900.00

SHEET:  
9

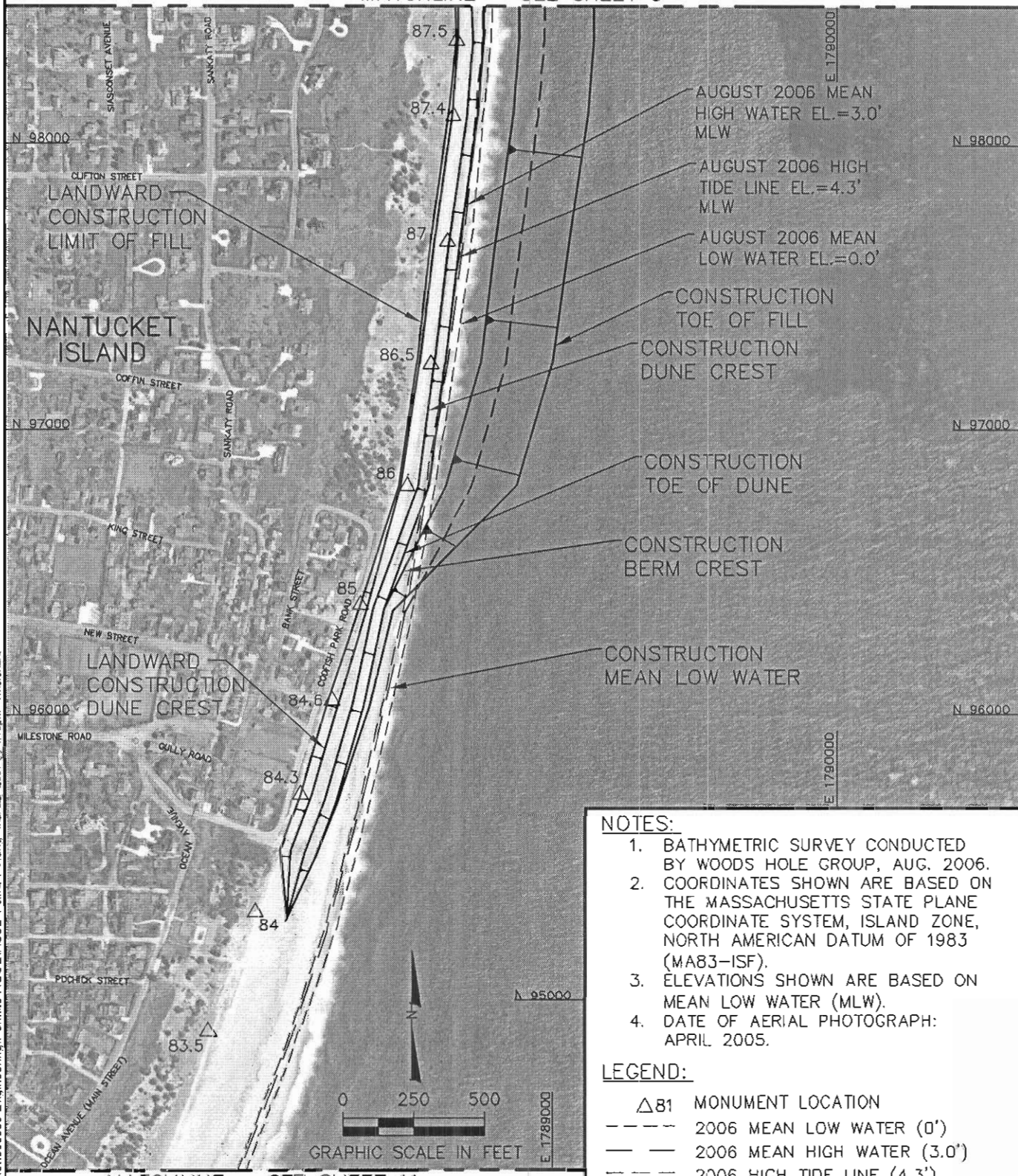
NOT FOR CONSTRUCTION  
FOR REGULATORY REVIEW ONLY

REVISIONS		
DATE	BY	DESCRIPTION

NAME \_\_\_\_\_ DATE \_\_\_\_\_

H:\Massachusetts\Nantucket\1990000-Engineering\Permits-ACOE\ACOE Permit PV.dwg - Mar 02, 2007 @ 4:09pm - Tmerchant

MATCHLINE - SEE SHEET 9



AUGUST 2006 MEAN HIGH WATER EL.=3.0' MLW  
 AUGUST 2006 HIGH TIDE LINE EL.=4.3' MLW  
 AUGUST 2006 MEAN LOW WATER EL.=0.0'

**NOTES:**

1. BATHYMETRIC SURVEY CONDUCTED BY WOODS HOLE GROUP, AUG. 2006.
2. COORDINATES SHOWN ARE BASED ON THE MASSACHUSETTS STATE PLANE COORDINATE SYSTEM, ISLAND ZONE, NORTH AMERICAN DATUM OF 1983 (MA83-ISF).
3. ELEVATIONS SHOWN ARE BASED ON MEAN LOW WATER (MLW).
4. DATE OF AERIAL PHOTOGRAPH: APRIL 2005.

**LEGEND:**

- △81 MONUMENT LOCATION
- 2006 MEAN LOW WATER (0')
- 2006 MEAN HIGH WATER (3.0')
- - - 2006 HIGH TIDE LINE (4.3')

NOT FOR CONSTRUCTION  
 FOR REGULATORY REVIEW ONLY

NAME \_\_\_\_\_ DATE \_\_\_\_\_

REVISIONS		
DATE	BY	DESCRIPTION

**SCONSET BEACH NOURISHMENT PROJECT**  
**PROPOSED PROJECT PLAN VIEW - STATION 87.5 TO 83.5**

**COASTAL PLANNING & ENGINEERING, INC.**  
 2481 N.W. 8600A ROAD BOULDERDALE  
 BOCA RATON, FLORIDA 33431  
 P: (561) 391-8100  
 F: (561) 391-9116  
 www.CoastalPlanEng.com

DATE: 03/02/07  
 BY: TDM  
 COMM NO.: 9900.00  
 SHEET: 10

H:\Massachusetts\Nantucket\1990000-E\neineering\Permits-ACO\E\ACOE Permt. PV.dwg - Mjr 02 2007 @ 4:10pm - Tmechant

MATCHLINE - SEE SHEET 10



SCONSET BEACH NOURISHMENT PROJECT  
 PROPOSED PROJECT PLAN VIEW - STATION 83 TO 81

H:\Massachusetts\Nantucket\1990000-E\engineering\Permits-ACOE\ACOE Permit PV.dwg - Mar 02 2007 @ 4:11pm - Trenchant

NANTUCKET ISLAND  
 LANDWARD CONSTRUCTION LIMIT OF FILL  
 LANDWARD CONSTRUCTION DUNE CREST

CONSTRUCTION TOE OF DUNE  
 SEAWARD CONSTRUCTION DUNE CREST

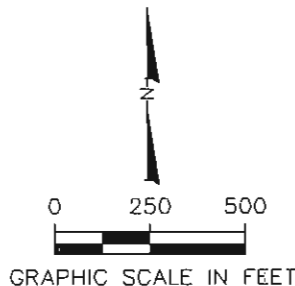
AUGUST 2006 MEAN HIGH WATER EL.=3.0' MLW  
 AUGUST 2006 HIGH TIDE LINE EL.=4.3' MLW  
 AUGUST 2006 MEAN LOW WATER EL.=0.0' MLW

**NOTES:**

- BATHYMETRIC SURVEY CONDUCTED BY WOODS HOLE GROUP, AUG. 2006.
- COORDINATES SHOWN ARE BASED ON THE MASSACHUSETTS STATE PLANE COORDINATE SYSTEM, ISLAND ZONE, NORTH AMERICAN DATUM OF 1983 (MA83-ISF).
- ELEVATIONS SHOWN ARE BASED ON MEAN LOW WATER (MLW).
- DATE OF AERIAL PHOTOGRAPH: APRIL 2005.

**LEGEND:**

- △81 MONUMENT LOCATION
- 2006 MEAN LOW WATER (0')
- 2006 MEAN HIGH WATER (3.0')
- - - 2006 HIGH TIDE LINE (4.3')



NOT FOR CONSTRUCTION  
 FOR REGULATORY REVIEW ONLY

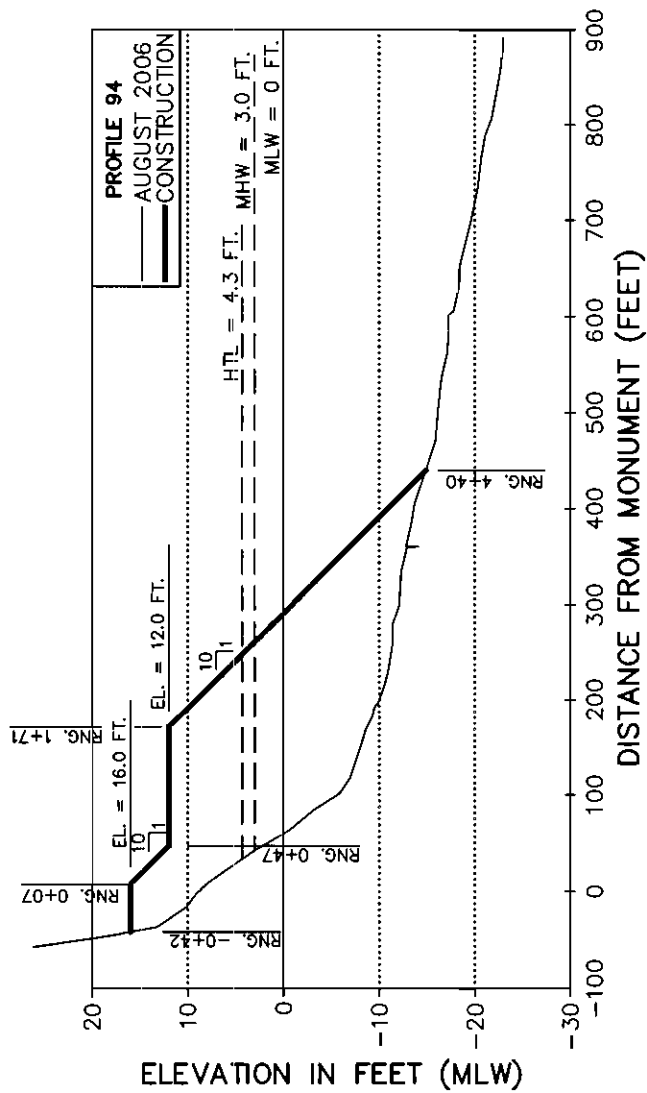
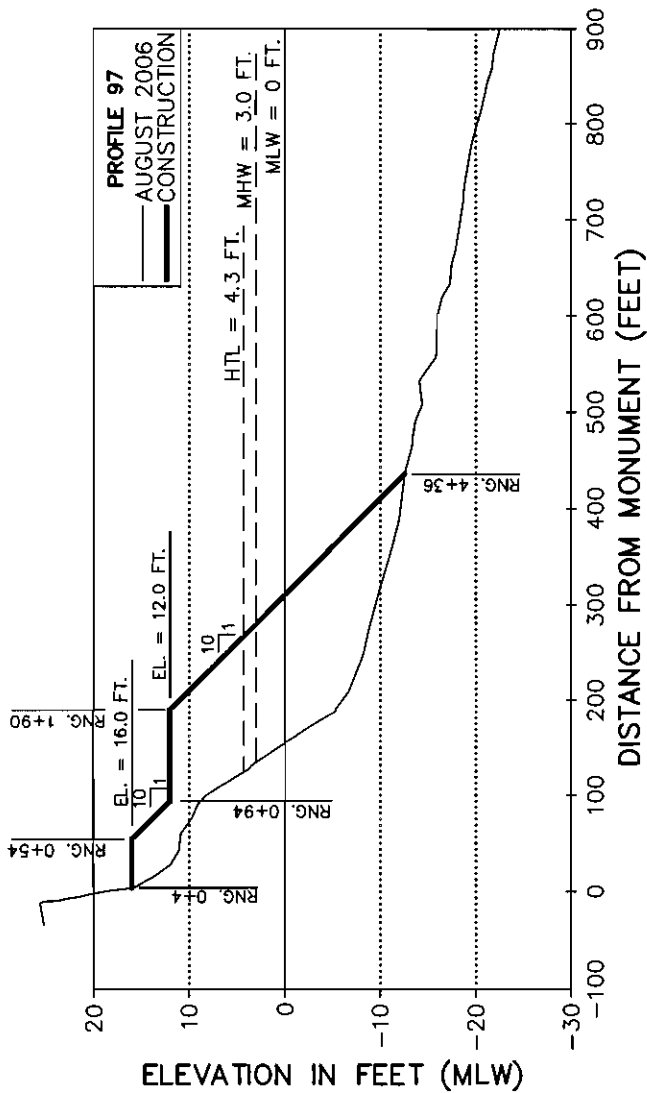
REVISIONS		
DATE	BY	DESCRIPTION

**CPE**  
 COASTAL PLANNING & ENGINEERING, INC.  
 2481 N.W. 90CA AERONAUTICAL BLVD  
 9006 N.W. 10TH, FLORIDA 33411  
 P: (813) 391-5102  
 F: (813) 391-5116  
 www.cpeplanning.com

DATE: 03/02/07  
 BY: TDM  
 COMM NO.: 9900.00  
 SHEET: 11

NAME \_\_\_\_\_ DATE \_\_\_\_\_





NOT FOR CONSTRUCTION  
FOR REGULATORY REVIEW ONLY

NAME \_\_\_\_\_

DATE \_\_\_\_\_

REVISIONS		
DATE	BY	DESCRIPTION

SCONSET BEACH NOURISHMENT PROJECT  
PROJECT FILL PROFILES 97 AND 94

**COASTAL PLANNING & ENGINEERING, INC.**  
2481 N.W. BOCA RATON BOULEVARD  
BOCA RATON, FLORIDA 33431  
PH: (954) 397-9152  
FAX: (954) 391-9118  
www.CoastalPlanning.net



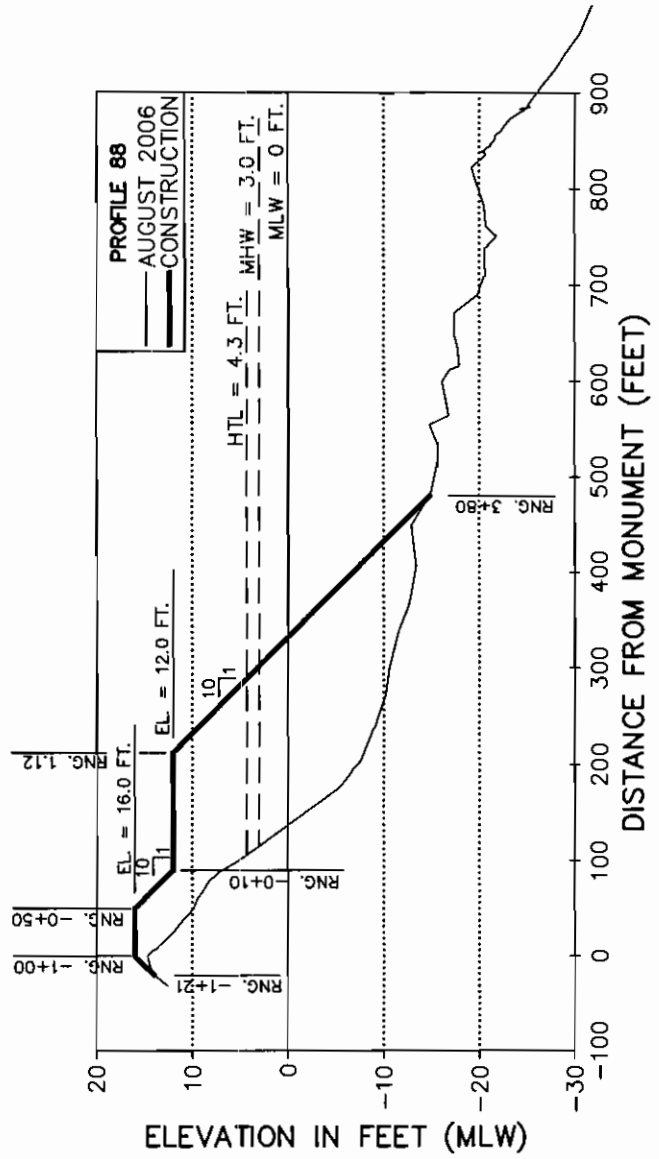
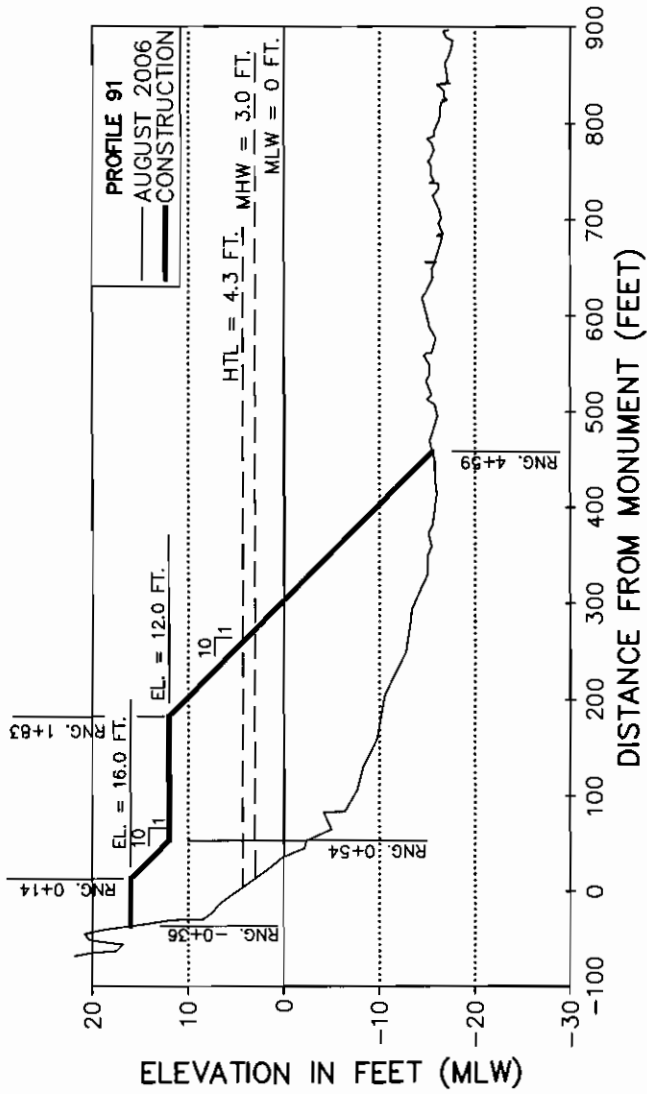
DATE:  
03/02/07

TDM

COMM NO.:  
9900.00

SHEET:  
12

H:\Massachusetts\Nantucket\990000-Engineering\Permits-ACEVACOE Permit Fill XS.dwg - Mar 02, 2007 @ 11:04am - Tmerchant



NOT FOR CONSTRUCTION  
FOR REGULATORY REVIEW ONLY

REVISIONS		
DATE	BY	DESCRIPTION

NAME \_\_\_\_\_

DATE \_\_\_\_\_

**SCONSET BEACH NOURISHMENT PROJECT  
PROJECT FILL PROFILES 91 AND 88**

**COASTAL PLANNING & ENGINEERING, INC.**

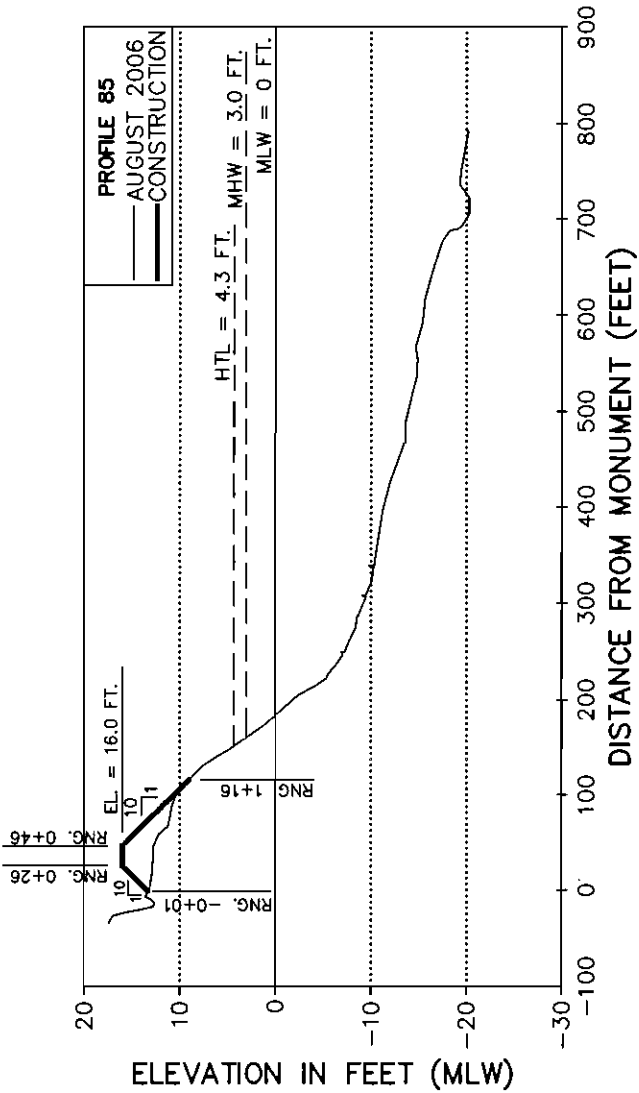
2481 N.W. BOCA RATON BOULEVARD  
BOCA RATON, FLORIDA 33431

PH: (561) 391-8108  
FAX: (561) 391-8116  
www.CoastalPlanning.net



DATE:  
03/02/07

TDM  
COMM NO.:  
9900.00  
SHEET:  
13



NOT FOR CONSTRUCTION  
 FOR REGULATORY REVIEW ONLY

NAME \_\_\_\_\_

DATE \_\_\_\_\_

REVISIONS		
DATE	BY	DESCRIPTION

DATE:  
 03/02/07

TDM

COMM NO.:

9900.00

SHEET:

14

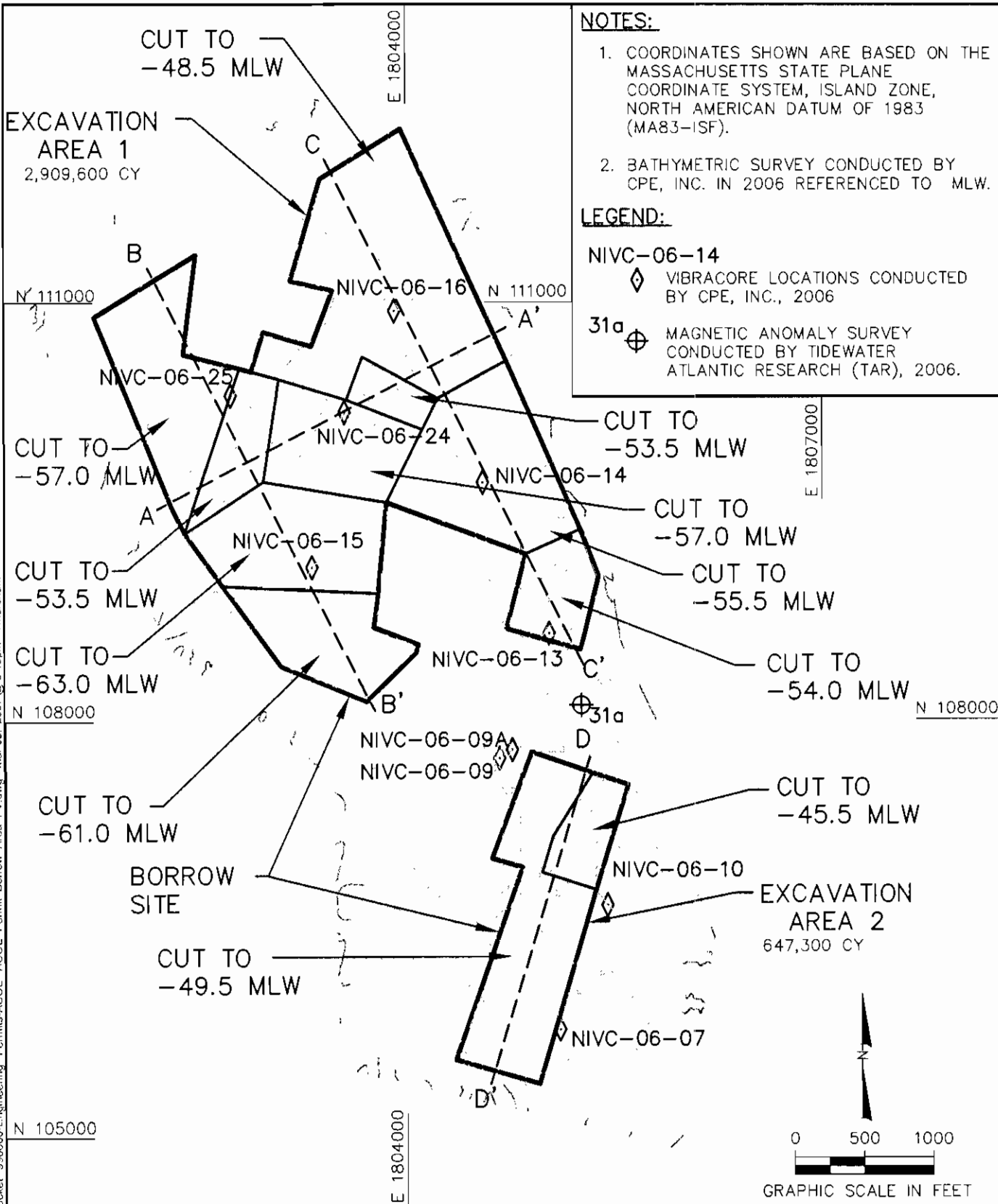


**COASTAL PLANNING & ENGINEERING, INC.**

2481 N.W. BOCA RATON BOULEVARD  
 BOCA RATON, FLORIDA 33431  
 PH. (561) 381-8102  
 FAX (561) 381-8118  
 www.CoastalPlanning.com

**SCONSET BEACH NOURISHMENT PROJECT  
 PROJECT FILL PROFILE 85**

H: Massachusetts Nantuxet 990000-Engineering Permits-ACOE Permit Borrow Area PV.dwg - Mar 02, 2007 @ 3:18pm - Tmerchant



**NOTES:**

- COORDINATES SHOWN ARE BASED ON THE MASSACHUSETTS STATE PLANE COORDINATE SYSTEM, ISLAND ZONE, NORTH AMERICAN DATUM OF 1983 (MA83-ISF).
- BATHYMETRIC SURVEY CONDUCTED BY CPE, INC. IN 2006 REFERENCED TO MLW.

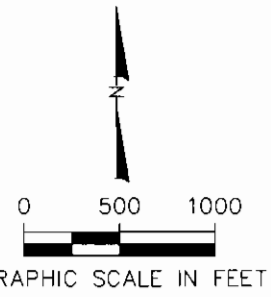
**LEGEND:**

NIVC-06-14  
 ◆ VIBRACORE LOCATIONS CONDUCTED BY CPE, INC., 2006

31a ⊕ MAGNETIC ANOMALY SURVEY CONDUCTED BY TIDEWATER ATLANTIC RESEARCH (TAR), 2006.

SCONSET BEACH NOURISHMENT PROJECT  
BORROW SITE PLAN VIEW

COASTAL PLANNING & ENGINEERING, INC.  
 PH: (951) 391-8192  
 BOCA RATON, FLORIDA 33431  
 FAX: (951) 391-8116  
 www.CoastalPlanning.net



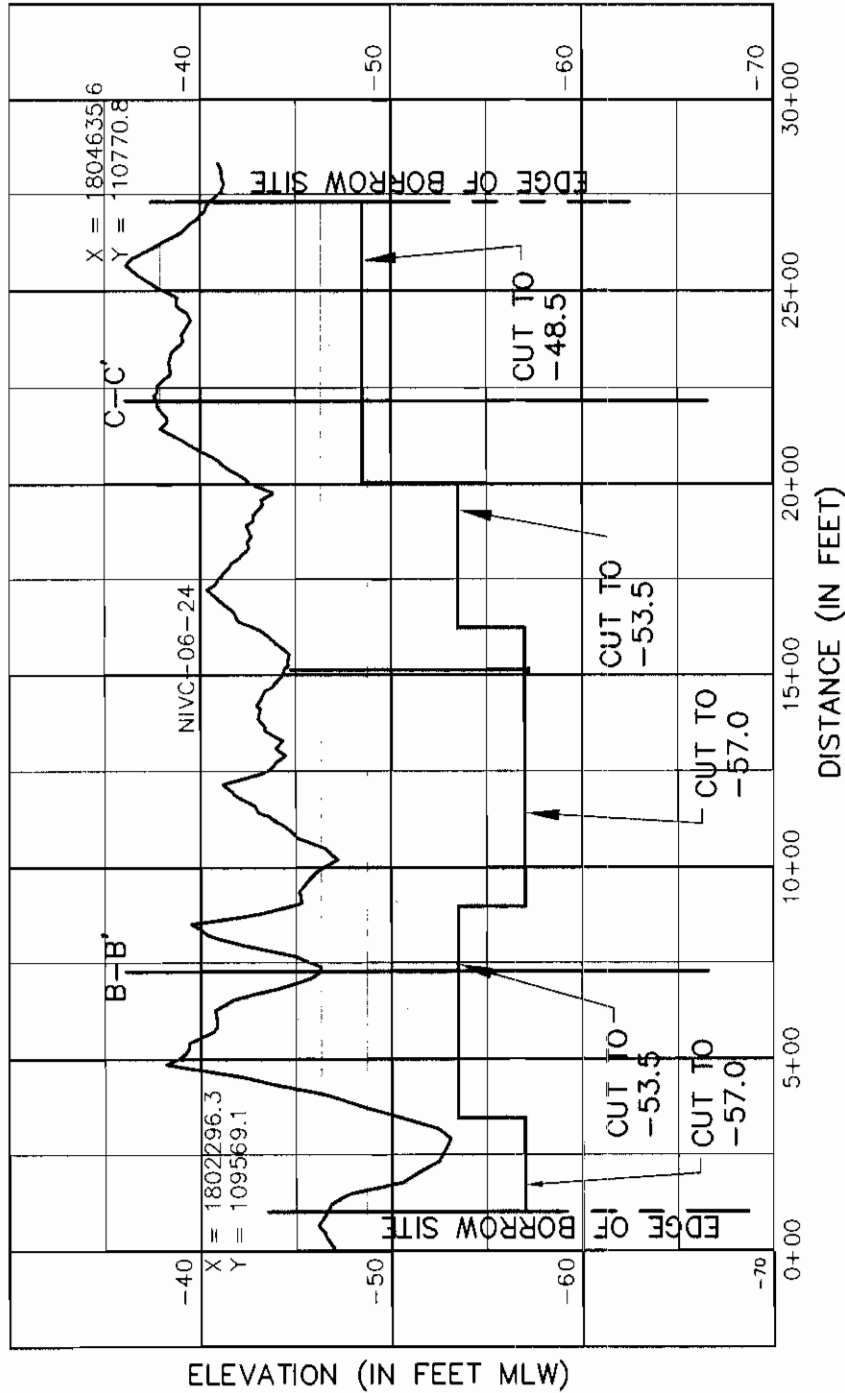
NOT FOR CONSTRUCTION  
FOR REGULATORY REVIEW ONLY

REVISIONS		
DATE	BY	DESCRIPTION
1/22/07	AMB	FINALIZE BORROW SITE DESIGN
3/16/07	RPH	New Sheet Number


DATE: 03/02/07  
 BY: TDM  
 COMM NO.: 9900.00  
 SHEET: 15

NAME \_\_\_\_\_ DATE \_\_\_\_\_

### CROSS SECTION A-A'



**LEGEND:**

 BEACH FILL MATERIAL

**NOTES:**

1. CORES MAY NOT FALL DIRECTLY ON CROSS SECTION LINE, BUT ARE LOCATED SUFFICIENTLY CLOSE TO REPRESENT SIMILAR MATERIAL.
2. SEE SHEET 18 FOR LOCATION OF CROSS SECTION LINE.

NOT FOR CONSTRUCTION  
FOR REGULATORY REVIEW ONLY

Name \_\_\_\_\_

DATE \_\_\_\_\_

REVISIONS		
DATE	BY	DESCRIPTION
1/22/07	AMB	FINALIZE BORROW SITE DESIGN
3/16/07	RPH	New Sheet Number

TDM
COMM NO.
9900.00
SHEET:
16

**CPE**  
DATE: 3/02/07  
BY: \_\_\_\_\_

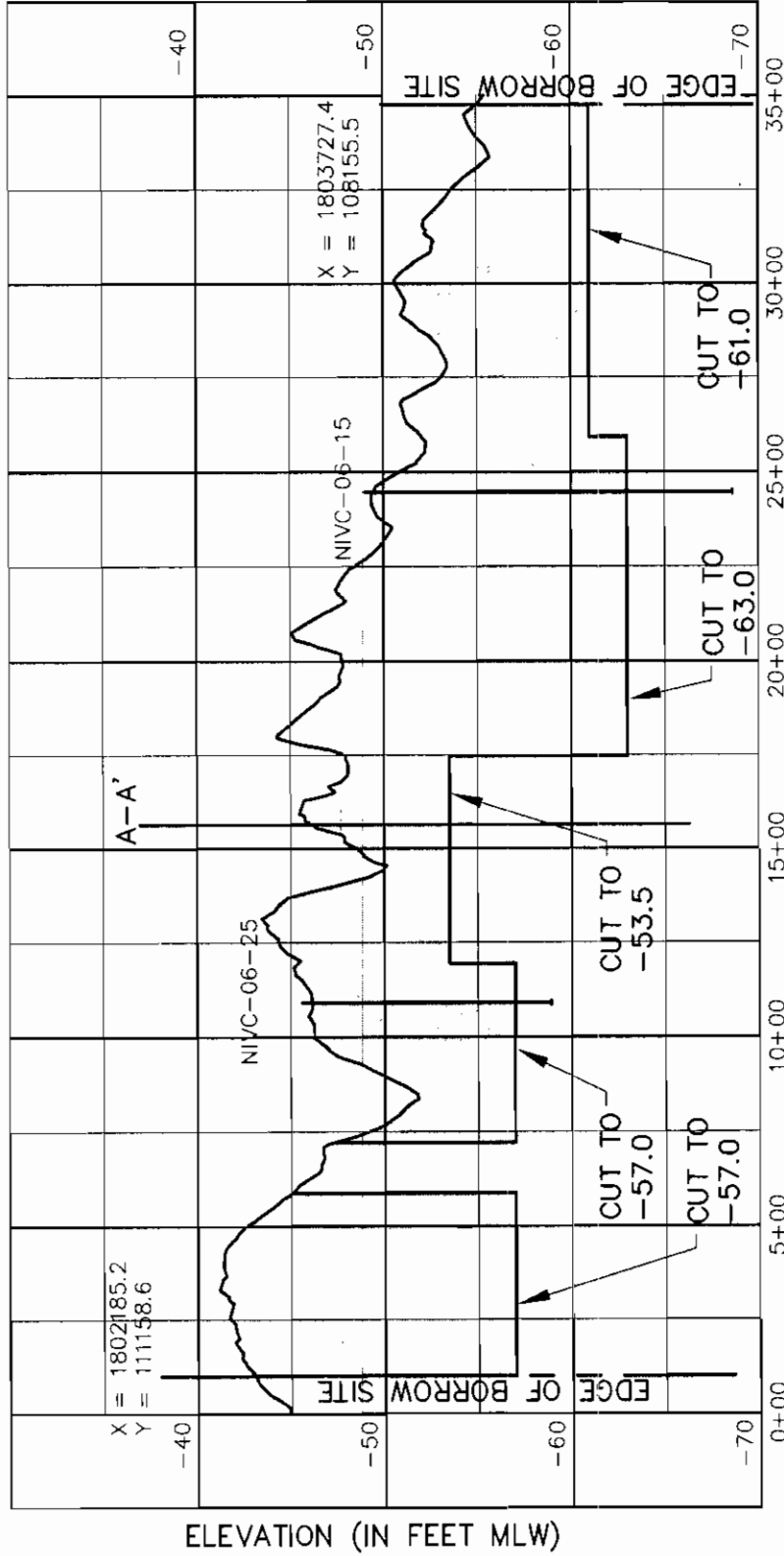
**COASTAL PLANNING & ENGINEERING, INC.**  
2411 W. BOCA RATON BOULEVARD  
BOCA RATON, FLORIDA 33431  
www.CoastalPlanning.net

**SCONSET BEACH NOURISHMENT PROJECT  
BORROW SITE CROSS SECTION A-A'**

TITLE: \_\_\_\_\_

PH (561) 391-8162  
FAX (561) 391-9116  
C.O.A. FL #4028  
C.O.A. LA #2551

### CROSS SECTION B-B'



DISTANCE (IN FEET)

ELEVATION (IN FEET MLW)

LEGEND:  BEACH FILL MATERIAL

**NOTES:**

1. CORES MAY NOT FALL DIRECTLY ON CROSS SECTION LINE, BUT ARE LOCATED SUFFICIENTLY CLOSE TO REPRESENT SIMILAR MATERIAL.
2. SEE SHEET 18 FOR LOCATION OF CROSS SECTION LINE.

NOT FOR CONSTRUCTION  
FOR REGULATORY REVIEW ONLY

Name \_\_\_\_\_

DATE \_\_\_\_\_

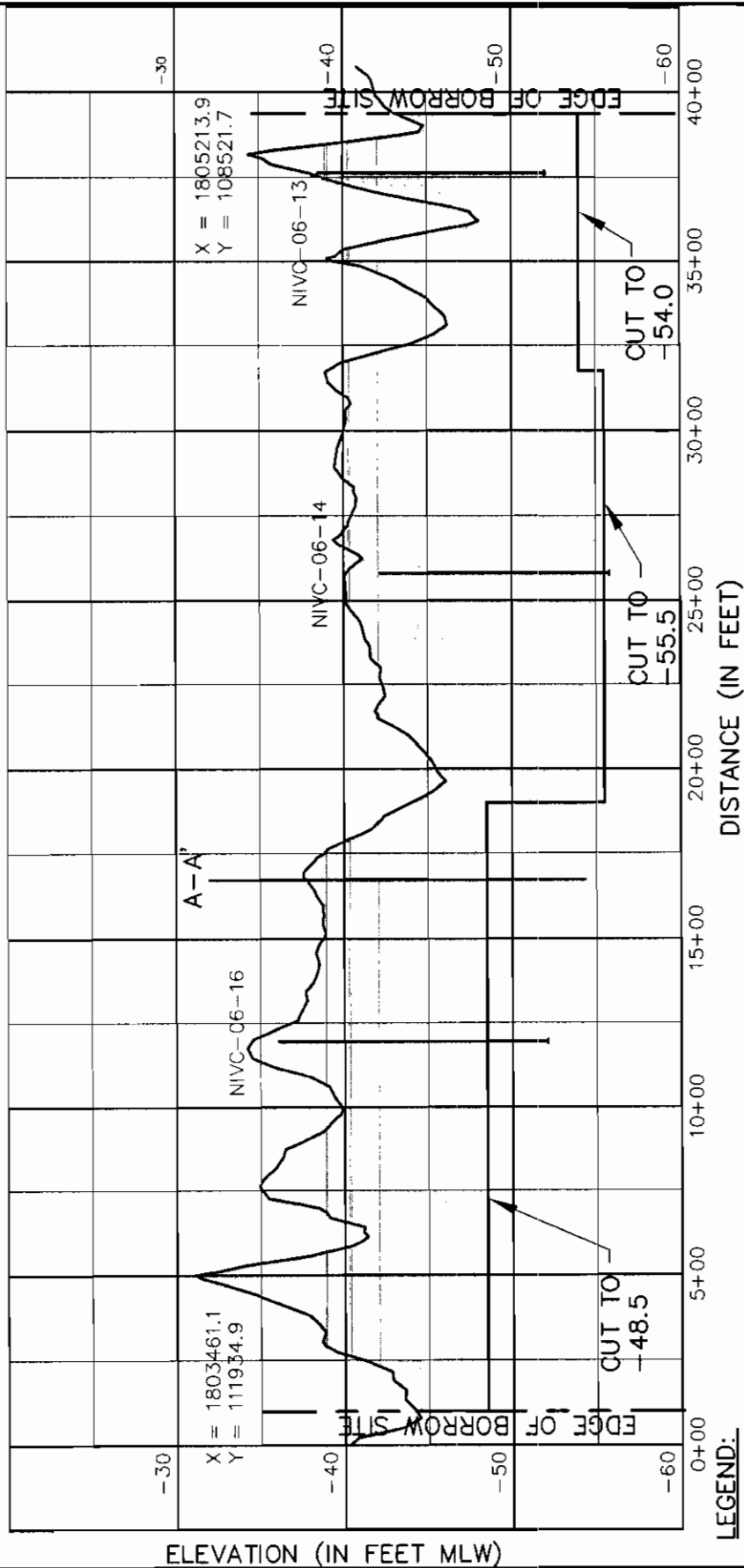
REVISIONS		
DATE	BY	DESCRIPTION
1/22/07	AMB	FINALIZE BORROW SITE DESIGN
3/16/07	RPH	New Sheet Number

DATE:	3/02/07
BY:	TDM
COMM NO.	9900.00
SHEET:	17

**CPE**  
  
**COASTAL PLANNING & ENGINEERING, INC.**  
 2481 N.W. BOCA RATON BOULEVARD  
 BOCA RATON, FLORIDA 33431  
 PH: (561) 391-8102  
 FAX: (561) 391-9115  
 C.O.A. FL #4028  
 C.O.A. LA #2531  
 www.CoastalPlanning.net

**SCONSET BEACH NOURISHMENT PROJECT  
BORROW SITE CROSS SECTION B-B'**

### CROSS SECTION C-C'



LEGEND:  BEACH FILL MATERIAL

**NOTES:**

1. CORES MAY NOT FALL DIRECTLY ON CROSS SECTION LINE, BUT ARE LOCATED SUFFICIENTLY CLOSE TO REPRESENT SIMILAR MATERIAL.
2. SEE SHEET 18 FOR LOCATION OF CROSS SECTION LINE.

NOT FOR CONSTRUCTION  
FOR REGULATORY REVIEW ONLY

Name \_\_\_\_\_

DATE \_\_\_\_\_

REVISIONS		
DATE	BY	DESCRIPTION
1/22/07	AMB	FINALIZE BORROW SITE DESIGN
3/16/07	RPH	New Sheet Number

SCONSET BEACH NOURISHMENT PROJECT  
BORROW SITE CROSS SECTION C-C'

TITLE

**COASTAL PLANNING & ENGINEERING, INC.**  
PH (561) 391-9102  
FAX (561) 391-9116  
C.O.A. FL #4028  
C.O.A. LA #2031

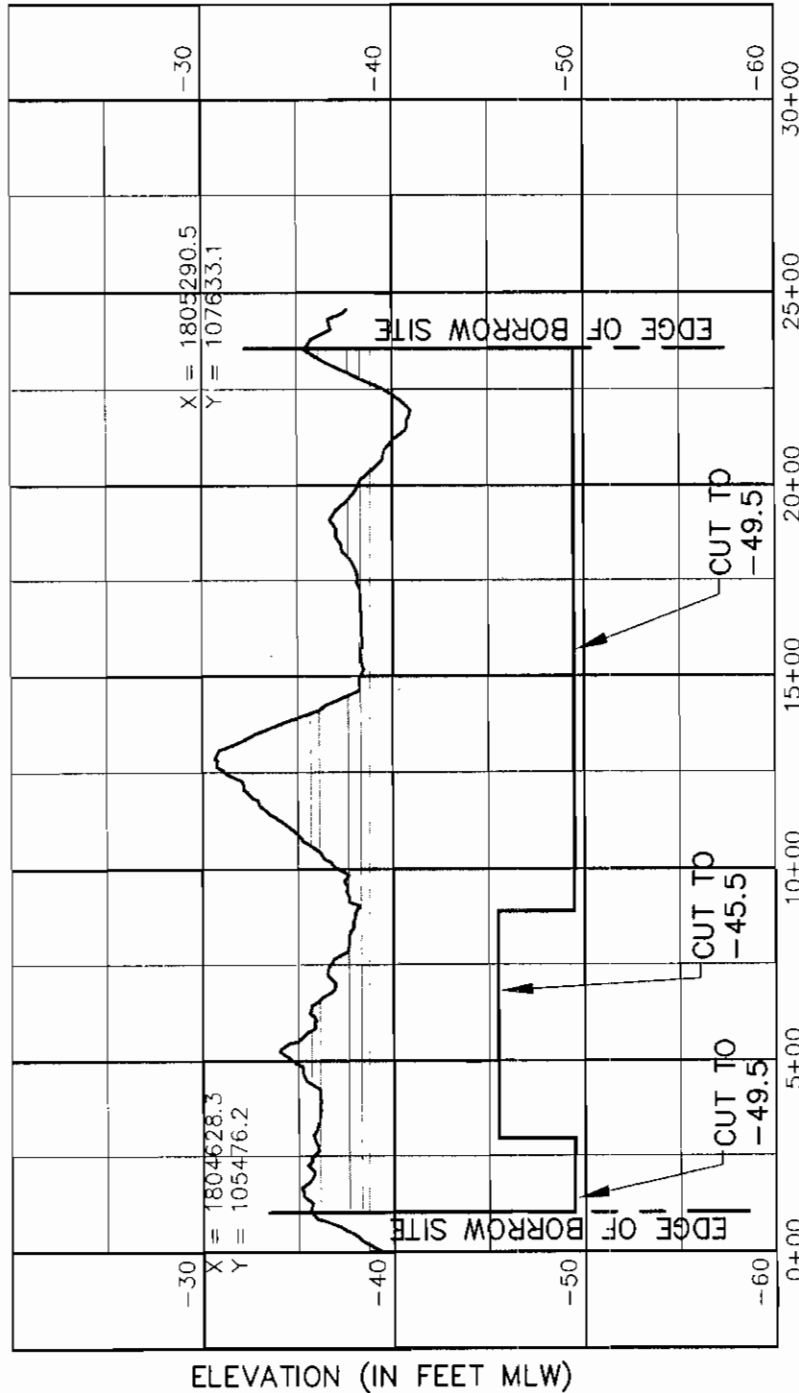
**CPE**  
2481 N.W. BOCA RATON BOULEVARD  
BOCA RATON, FLORIDA 33431  
www.CoastalPlanning.net



DATE: 3/02/07

BY: TDM  
COMM NO. 9900.00  
SHEET 18

CROSS SECTION D-D'



LEGEND:

BEACH FILL MATERIAL

NOTES:

1. CORES MAY NOT FALL DIRECTLY ON CROSS SECTION LINE, BUT ARE LOCATED SUFFICIENTLY CLOSE TO REPRESENT SIMILAR MATERIAL.
2. SEE SHEET 18 FOR LOCATION OF CROSS SECTION LINE.

NOT FOR CONSTRUCTION  
FOR REGULATORY REVIEW ONLY

Name \_\_\_\_\_

DATE \_\_\_\_\_

REVISIONS		
DATE	BY	DESCRIPTION
1/22/07	AMB	FINALIZE BORROW SITE DESIGN
3/16/07	RPH	New Sheet Number

TDM  
COMM NO. 9900.00  
SHEET 19

TITLE

**COASTAL PLANNING & ENGINEERING, INC.**  
2411 N.W. BOCA RATON BOULEVARD  
BOCA RATON, FLORIDA 33431  
www.CoastalPE.com  
PH: (561) 391-4100  
FAX: (561) 391-8115  
C.O.A. FL #4628  
C.O.A. LA #2551



DATE: 3/02/07

BY:

SCONSET BEACH NOURISHMENT PROJECT  
BORROW SITE CROSS SECTION D-D'