



**US Army Corps  
of Engineers**  
New England District

# PUBLIC NOTICE

696 Virginia Road  
Concord, MA 01742-2751

**Date: September 23, 2008**  
**Comment Period Ends: October 23, 2008**  
**File Number: NAE-2007-3029**  
**In Reply Refer To: John C. Sargent**  
**Or by e-mail: john.c.sargent@usace.army.mil**

The District Engineer has received a permit application from the applicant below to **conduct work in waters of the United States** as described below. The Corps is soliciting comments on both the project itself and the range of issues to be addressed in the environmental documentation.

## APPLICANT

Tennessee Gas Pipeline Company  
Attn: Harold McCracken  
1001 Louisiana Street  
Houston, Texas 77002

## ACTIVITY

The work includes the discharge of fill material in approximately 7.48 acres of herbaceous, shrub and forested wetlands for replacing approximately 5.15 miles of 6-inch diameter natural gas pipeline with a 12-inch diameter natural gas pipeline to meet increasing demand. The pipeline replacement would occur within an existing 20-foot wide easement with up to 55 additional feet of temporary workspace for construction staging activities. All wetland impacts associated with construction will be temporary in nature and restored on-site. Detailed plans of the activity, and draft mitigation plan are attached.

## WATERWAY AND LOCATION OF THE PROPOSED WORK

This work is proposed in tributary streams and adjacent wetlands in the Nashua River drainage system off Lancaster Street, Lunenburg, Massachusetts and terminates off Pleasant Street in Lunenburg, Massachusetts. The proposed location on the USGS Shirley and Fitchburg quadrangles at 42.53 Latitude, -71.70 Longitude, to 42.58 Latitude, -71.77 Longitude.

## AUTHORITY

Permits are required pursuant to:

- Section 10 of the Rivers and Harbors Act of 1899  
 Section 404 of the Clean Water Act  
 Section 103 of the Marine Protection, Research and Sanctuaries Act).

The decision whether to issue a permit will be based on an evaluation of the probable impact of the proposed activity on the public interest. That decision will reflect the national concern for both protection and utilization of important resources. The benefit which may reasonably accrue from the proposal must be balanced against its reasonably foreseeable detriments. All factors which may be relevant to the proposal will be considered, including the cumulative effects thereof; among those are: conservation, economics, aesthetics, general environmental concerns, wetlands, cultural value, fish and wildlife values, flood hazards, flood plain value, land

use, navigation, shoreline erosion and accretion, recreation, water supply and conservation, water quality, energy needs, safety, food production and, in general, the needs and welfare of the people.

The Corps of Engineers is soliciting comments from the public; Federal, state, and local agencies and officials; Indian Tribes; and other interested parties in order to consider and evaluate the impacts of this proposed activity. Any comments received will be considered by the Corps of Engineers to determine whether to issue, modify, condition or deny a permit for this proposal. To make this decision, comments are used to assess impacts on endangered species, historic properties, water quality, general environmental effects, and the other public interest factors listed above. Comments are used in the preparation of an Environmental Assessment and/or an Environmental Impact Statement pursuant to the National Environmental Policy Act. Comments are also used to determine the need for a public hearing and to determine the overall public interest of the proposed activity.

Where the activity involves the discharge of dredged or fill material into waters of the United States or the transportation of dredged material for the purpose of disposing it in ocean waters, the evaluation of the impact of the activity in the public interest will also include application of the guidelines promulgated by the Administrator, U.S Environmental Protection Agency, under authority of Section 404(b) of the Clean Water Act.

#### **SECTION 106 COORDINATION**

Based on his initial review, the District Engineer has determined that the proposed work may impact properties listed in, or eligible for listing in, the National Register of Historic Places. Additional review and consultation to fulfil requirements under Section 106 of the National Historic Preservation Act of 1966, as amended, will be ongoing as part of the permit review process.

#### **ENDANGERED SPECIES CONSULTATION**

The New England District, Army Corps of Engineers has reviewed the list of species protected under the Endangered Species Act of 1973, as amended, which might occur at the proposed project site during the construction and subsequent operation/use period sought by the applicant. We have undertaken a Biological Assessment (BA) of the potential for interactions and adverse impacts to those listed species. It is our determination that the proposed activity for which authorization is being sought is designed, situated or will be operated/used in such a manner that it is not likely to adversely affect any Federally listed endangered or threatened species or their designated critical habitat. By this Public Notice, we are requesting that the appropriate Federal Agency concur with our BA determination.

The following authorizations have been applied for, or have been, or will be obtained:

- ( X ) Permit, License or Assent from State.
- ( X ) Permit from Local Wetland Agency or Conservation Commission.
- ( X ) Water Quality Certification in accordance with Section 401 of the Clean Water Act.

In order to properly evaluate the proposal, we are seeking public comment. Anyone wishing to comment is encouraged to do so. **Comments should be submitted in writing by the above date.** If you have any questions, please contact John Sargent at (978) 318-8026, (800) 343-4789 or (800) 362-4367, if calling from within Massachusetts.


**CENAE-R**  
**FILE NO. NAE-2007-3029**

Any person may request, in writing, within the comment period specified in this notice, that a public hearing be held to consider the application. Requests for a public hearing shall specifically state the reasons for holding a public hearing. The Corps holds public hearings for the purpose of obtaining public comments when that is the best means for understanding a wide variety of concerns from a diverse segment of the public.

The initial determinations made herein will be reviewed in light of facts submitted in response to this notice. All comments will be considered a matter of public record. Copies of letters of objection will be forwarded to the applicant who will normally be requested to contact objectors directly in an effort to reach an understanding.

For more information on the New England District Corps of Engineers programs, visit our website at <http://www.nae.usace.army.mil>.

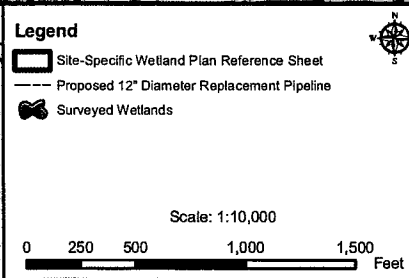
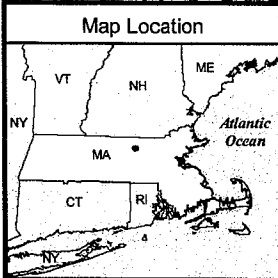
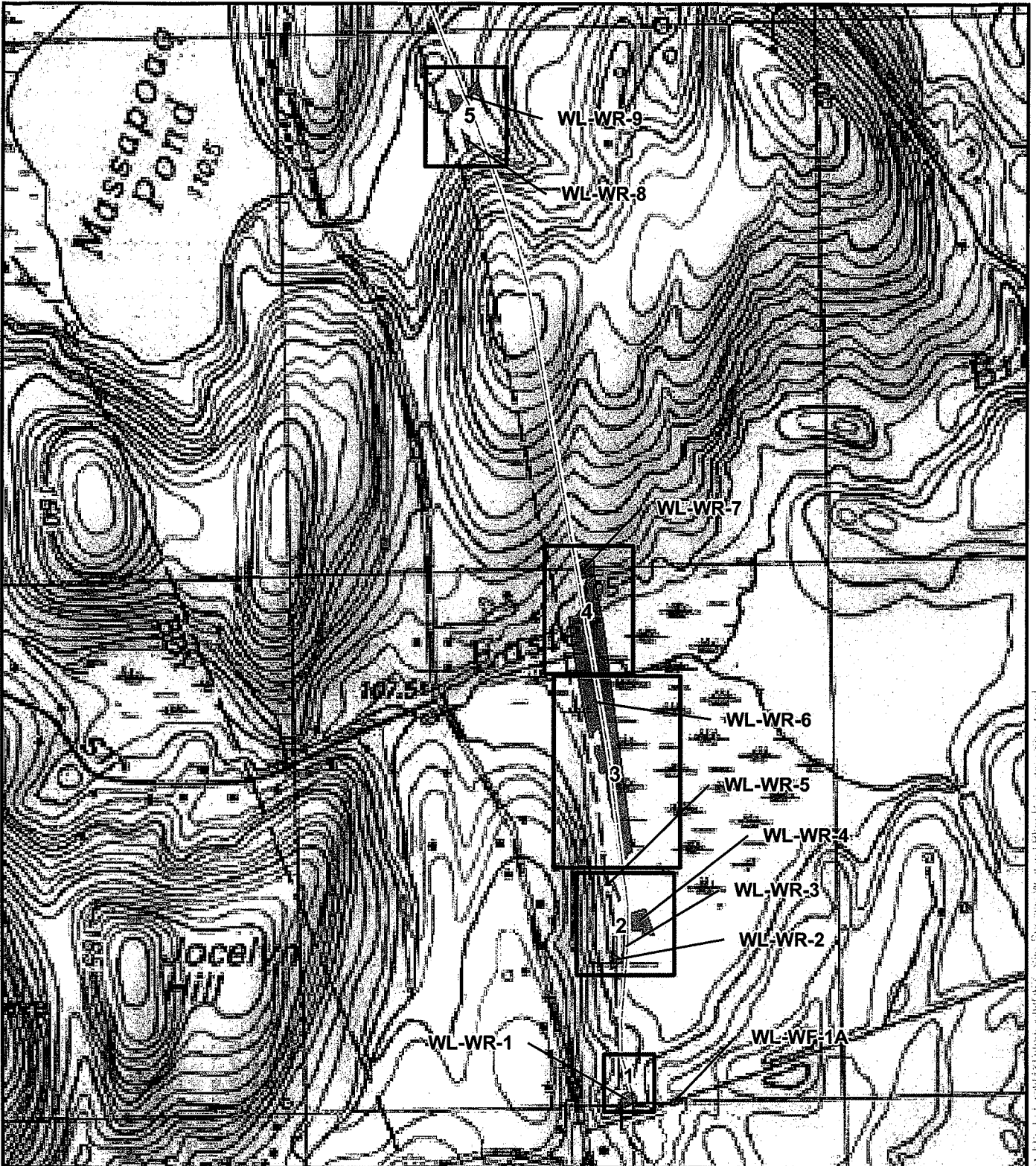
**THIS NOTICE IS NOT AN AUTHORIZATION TO DO ANY WORK.**



**Karen Kirk Adams**  
**Chief, Permits and Enforcement Branch**  
**Regulatory Division**

If you would prefer not to continue receiving Public Notices, please contact Ms. Tina Chaisson at (978) 318-8058 or e-mail her at [bettina.m.chaisson@usace.army.mil](mailto:bettina.m.chaisson@usace.army.mil). You may also check here ( ) and return this portion of the Public Notice to: Bettina Chaisson, Regulatory Division, U.S. Army Corps of Engineers, 696 Virginia Road, Concord, MA 01742-2751.

NAME: \_\_\_\_\_  
ADDRESS: \_\_\_\_\_



**Fitchburg Expansion Project  
Site-Specific Wetland Plan  
Index Map**

Lunenburg, MA

Image Source: Aerial 2004  
Map Projection: St Plane MA Mainland, NAD 83, Feet.

**Tennessee Gas Pipeline**  
an EPCO company

---

ENSR | AECOM

---

Sheet 1 of 4

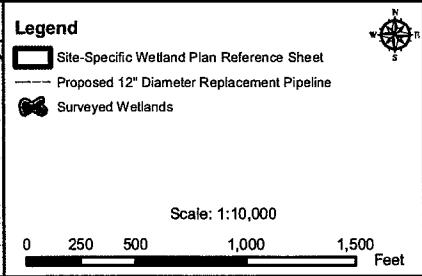
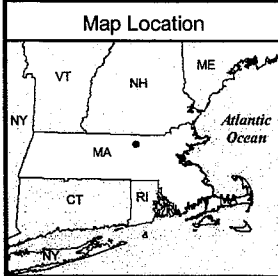
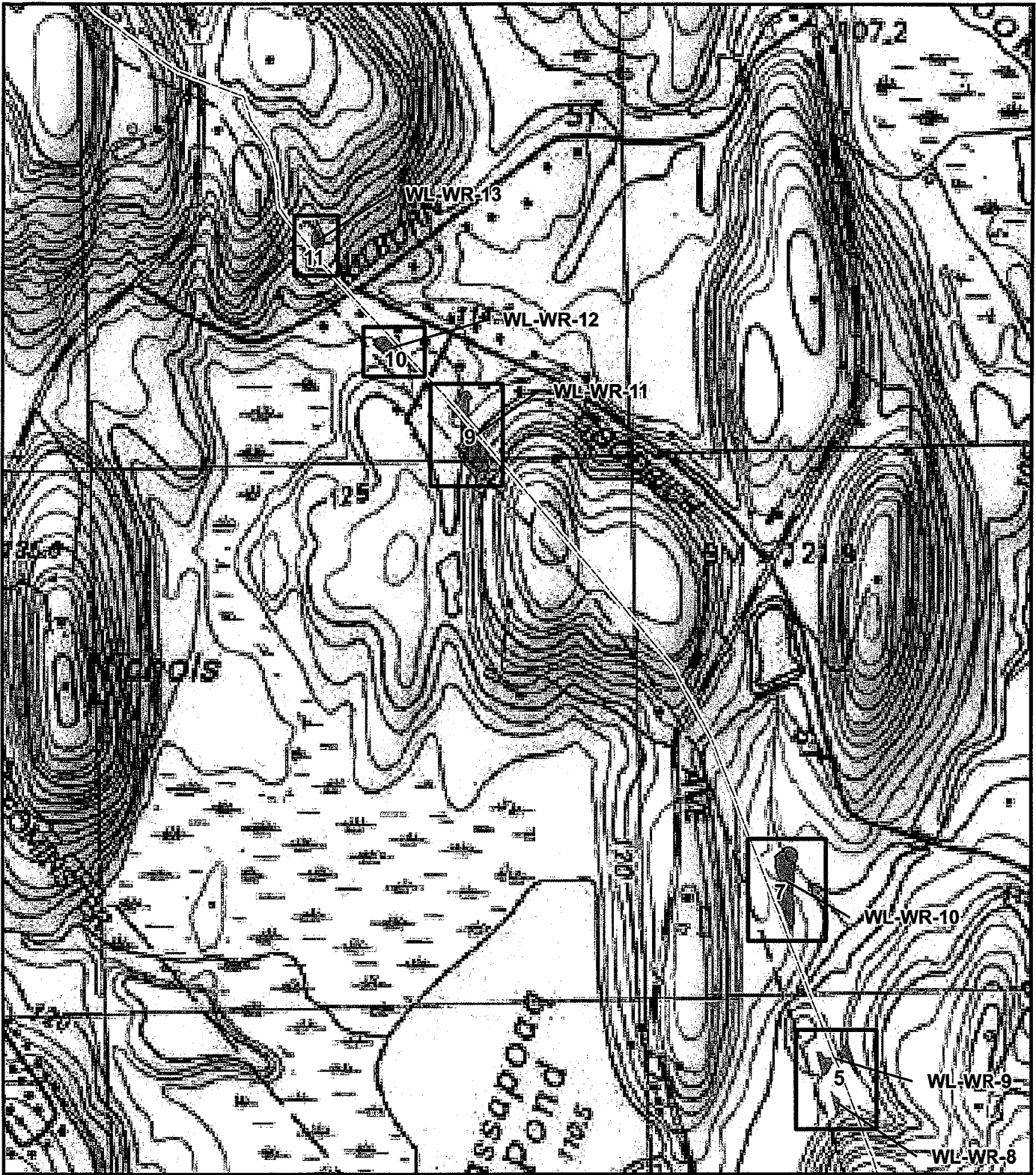
---

March 2008

---

Project #: 02521-070

Y:\Projects\Tennessee Gas Pipeline\INDEX Site-Specific Wetland Plan Reference Sheet.mxd



**Fitchburg Expansion Project  
Site-Specific Wetland Plan  
Index Map**

Lunenburg, MA

Image Source: Aerial 2004  
Map Projection: St Plane MA Mainland, NAD 83, Feet.

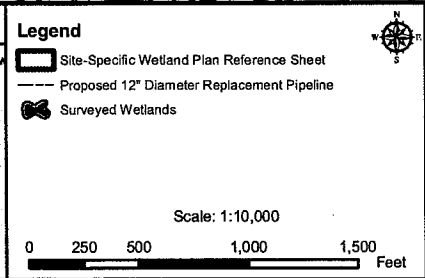
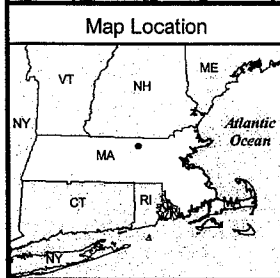
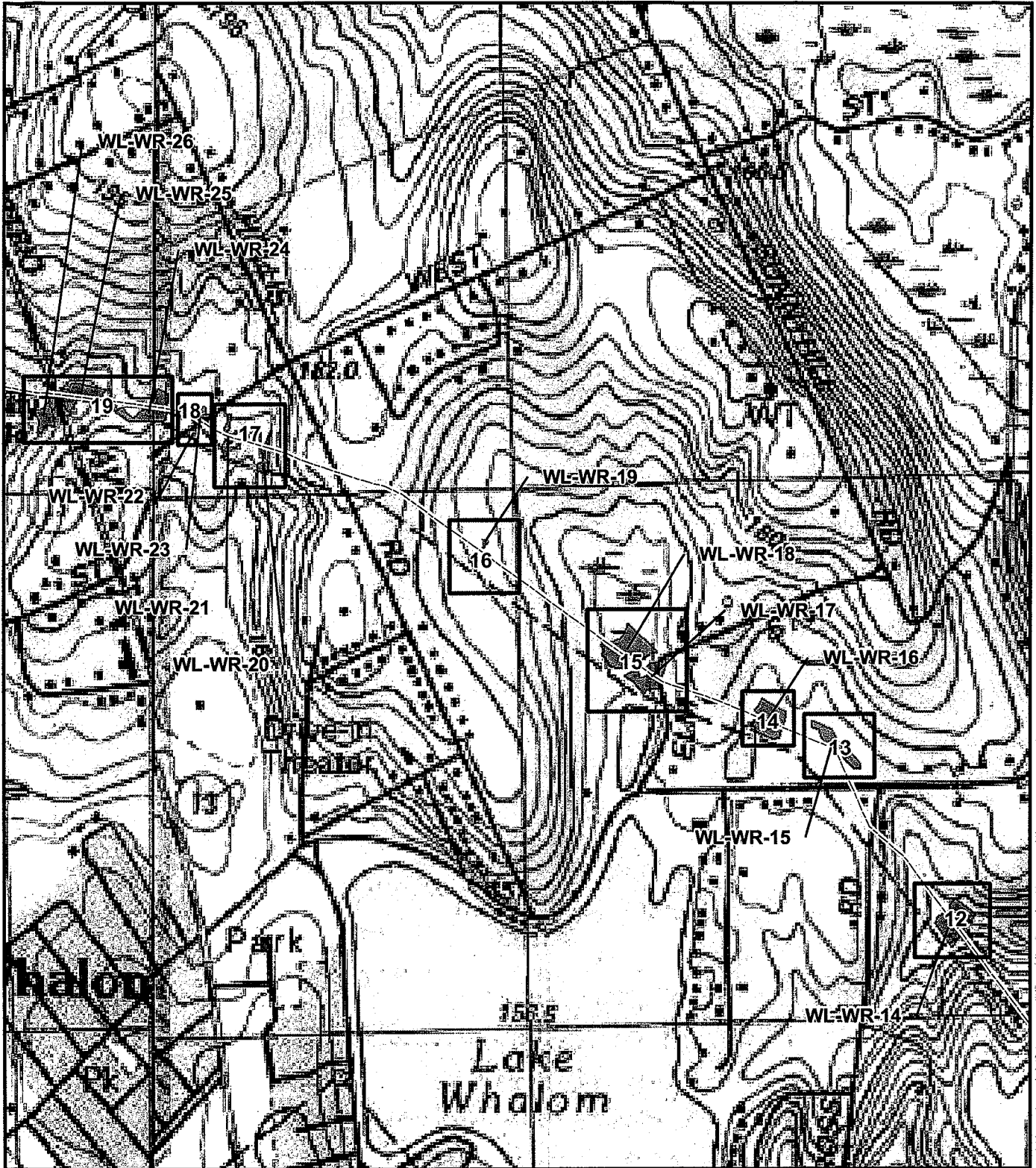
ENSR | AECOM

Sheet 2 of 4

March 2008

Project #: 02521-070

Y:\Projects\Tennessee Gas Pipeline\MA\_Lunenburg\Index\INDEX\_Site-Specific Wetland Plan Reference Sheet.mxd



**Fitchburg Expansion Project  
Site-Specific Wetland Plan  
Index Map**

Lunenburg, MA

Image Source: Aerial 2004  
Map Projection: St Plane MA Mainland, NAD 83, Feet.

**ep** Tennessee Gas Pipeline  
an BP Energy company

ENSR | AECOM

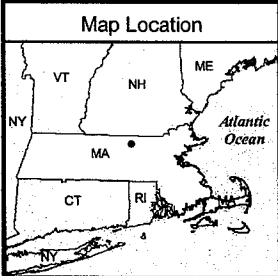
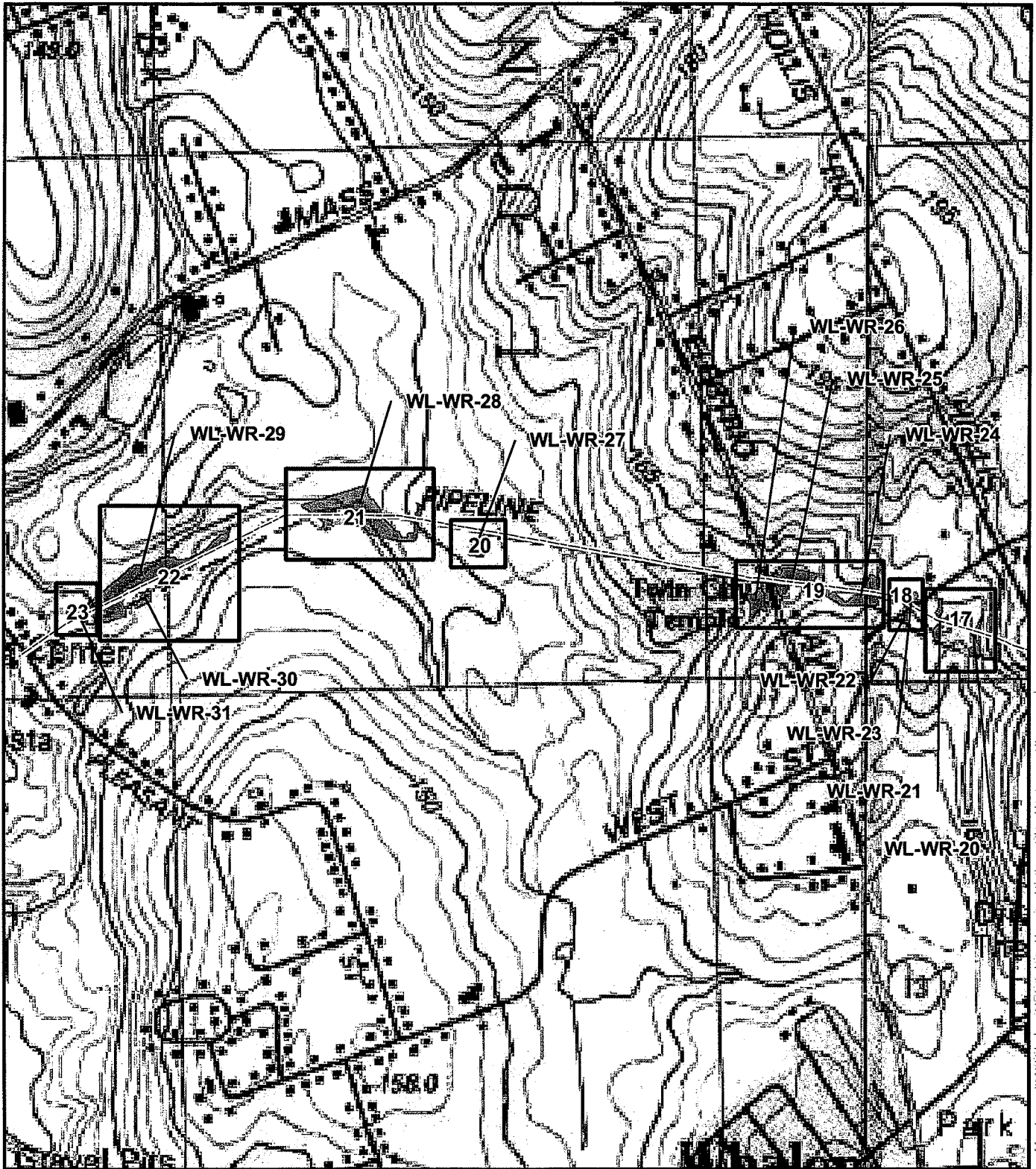
Sheet 3 of 4

March 2008

Project #: 02521-070

Y:\Projects\Tennessee Gas Pipeline\MA\_Lunenburg\DWG\INDEX - Site-Specific Wetland Plan Reference Sheet.mxd





**Legend**

- Site-Specific Wetland Plan Reference Sheet
- Proposed 12" Diameter Replacement Pipeline
- Surveyed Wetlands

Scale: 1:10,000

0 250 500 1,000 1,500 Feet

**Fitchburg Expansion Project  
Site-Specific Wetland Plan  
Index Map**

Lunenburg, MA

Image Source: Aerial 2004  
Map Projection: St Plane MA Mainland, NAD 83, Feet.

**Tennessee Gas Pipeline**  
an E.P. S&P company

---

ENSR | AECOM

---

Sheet 4 of 4

---

March 2008

---

Project #: 02521-070

Y:\Projects\Tennessee Gas Pipeline\MA Lunenburg\Index\INDEX\_Site-Specific\_Wetland Plan Reference Sheet.mxd









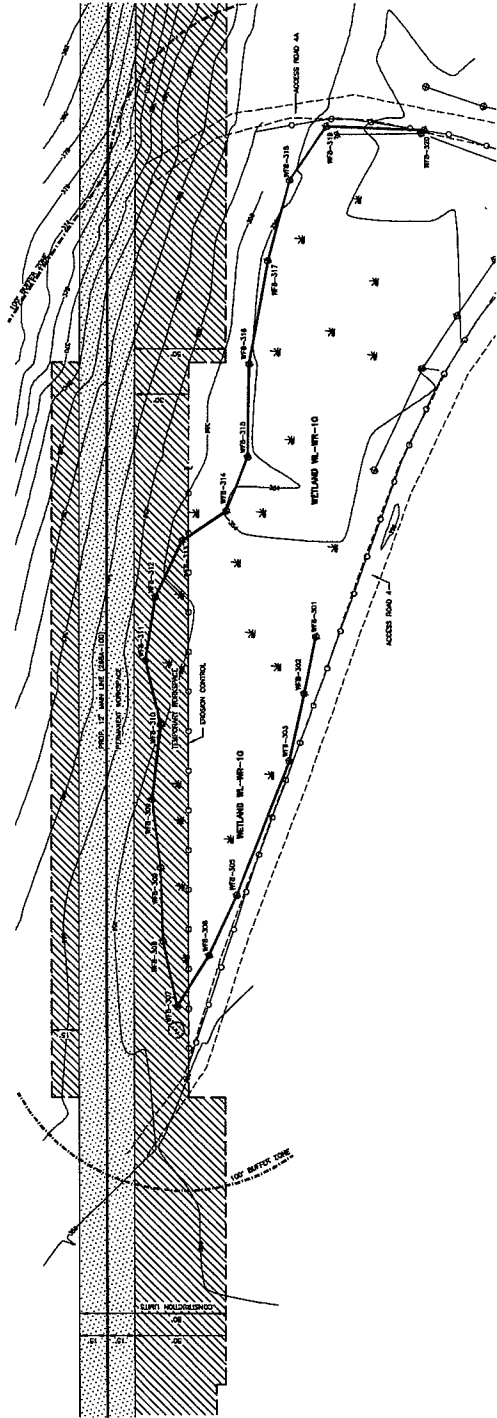




WORCESTER COUNTY, MASSACHUSETTS  
TOWN OF LUNENBURG



PROPERTY OWNED  
BY  
WETLANDS  
OF MASSACHUSETTS  
INCORPORATED  
1981



WATERBODIES IMPACT

WETLAND / WATERBODY	AREA IMPACT	WATER QUALITY	PROGRAM
W-10	1.0	1.0	1.0
W-11	1.0	1.0	1.0
W-12	1.0	1.0	1.0
W-13	1.0	1.0	1.0
W-14	1.0	1.0	1.0
W-15	1.0	1.0	1.0
W-16	1.0	1.0	1.0
W-17	1.0	1.0	1.0
W-18	1.0	1.0	1.0
W-19	1.0	1.0	1.0
W-20	1.0	1.0	1.0
W-21	1.0	1.0	1.0
W-22	1.0	1.0	1.0
W-23	1.0	1.0	1.0
W-24	1.0	1.0	1.0
W-25	1.0	1.0	1.0
W-26	1.0	1.0	1.0
W-27	1.0	1.0	1.0
W-28	1.0	1.0	1.0
W-29	1.0	1.0	1.0
W-30	1.0	1.0	1.0
W-31	1.0	1.0	1.0
W-32	1.0	1.0	1.0
W-33	1.0	1.0	1.0
W-34	1.0	1.0	1.0
W-35	1.0	1.0	1.0
W-36	1.0	1.0	1.0
W-37	1.0	1.0	1.0
W-38	1.0	1.0	1.0
W-39	1.0	1.0	1.0
W-40	1.0	1.0	1.0
W-41	1.0	1.0	1.0
W-42	1.0	1.0	1.0
W-43	1.0	1.0	1.0
W-44	1.0	1.0	1.0
W-45	1.0	1.0	1.0
W-46	1.0	1.0	1.0
W-47	1.0	1.0	1.0
W-48	1.0	1.0	1.0
W-49	1.0	1.0	1.0
W-50	1.0	1.0	1.0
W-51	1.0	1.0	1.0
W-52	1.0	1.0	1.0
W-53	1.0	1.0	1.0
W-54	1.0	1.0	1.0
W-55	1.0	1.0	1.0
W-56	1.0	1.0	1.0
W-57	1.0	1.0	1.0
W-58	1.0	1.0	1.0
W-59	1.0	1.0	1.0
W-60	1.0	1.0	1.0
W-61	1.0	1.0	1.0
W-62	1.0	1.0	1.0
W-63	1.0	1.0	1.0
W-64	1.0	1.0	1.0
W-65	1.0	1.0	1.0
W-66	1.0	1.0	1.0
W-67	1.0	1.0	1.0
W-68	1.0	1.0	1.0
W-69	1.0	1.0	1.0
W-70	1.0	1.0	1.0
W-71	1.0	1.0	1.0
W-72	1.0	1.0	1.0
W-73	1.0	1.0	1.0
W-74	1.0	1.0	1.0
W-75	1.0	1.0	1.0
W-76	1.0	1.0	1.0
W-77	1.0	1.0	1.0
W-78	1.0	1.0	1.0
W-79	1.0	1.0	1.0
W-80	1.0	1.0	1.0
W-81	1.0	1.0	1.0
W-82	1.0	1.0	1.0
W-83	1.0	1.0	1.0
W-84	1.0	1.0	1.0
W-85	1.0	1.0	1.0
W-86	1.0	1.0	1.0
W-87	1.0	1.0	1.0
W-88	1.0	1.0	1.0
W-89	1.0	1.0	1.0
W-90	1.0	1.0	1.0
W-91	1.0	1.0	1.0
W-92	1.0	1.0	1.0
W-93	1.0	1.0	1.0
W-94	1.0	1.0	1.0
W-95	1.0	1.0	1.0
W-96	1.0	1.0	1.0
W-97	1.0	1.0	1.0
W-98	1.0	1.0	1.0
W-99	1.0	1.0	1.0
W-100	1.0	1.0	1.0



**LEGEND**

[Symbol]	Permanent Wetlands
[Symbol]	Temporary Wetlands
[Symbol]	Wetlands (WPA)
[Symbol]	Proposed 12" Gas Pipeline
[Symbol]	Existing Pipeline
[Symbol]	Access Road
[Symbol]	Top of Bank
[Symbol]	Toe of Bank
[Symbol]	Shoreline/Stream
[Symbol]	Edge of Woods
[Symbol]	Boundary of Wetlands
[Symbol]	Boundary of Wetlands (Proposed)
[Symbol]	100' Buffer Zone
[Symbol]	200' Buffer Zone
[Symbol]	300' Buffer Zone
[Symbol]	400' Buffer Zone
[Symbol]	500' Buffer Zone
[Symbol]	600' Buffer Zone
[Symbol]	700' Buffer Zone
[Symbol]	800' Buffer Zone
[Symbol]	900' Buffer Zone
[Symbol]	1000' Buffer Zone
[Symbol]	1100' Buffer Zone
[Symbol]	1200' Buffer Zone
[Symbol]	1300' Buffer Zone
[Symbol]	1400' Buffer Zone
[Symbol]	1500' Buffer Zone
[Symbol]	1600' Buffer Zone
[Symbol]	1700' Buffer Zone
[Symbol]	1800' Buffer Zone
[Symbol]	1900' Buffer Zone
[Symbol]	2000' Buffer Zone
[Symbol]	2100' Buffer Zone
[Symbol]	2200' Buffer Zone
[Symbol]	2300' Buffer Zone
[Symbol]	2400' Buffer Zone
[Symbol]	2500' Buffer Zone
[Symbol]	2600' Buffer Zone
[Symbol]	2700' Buffer Zone
[Symbol]	2800' Buffer Zone
[Symbol]	2900' Buffer Zone
[Symbol]	3000' Buffer Zone
[Symbol]	3100' Buffer Zone
[Symbol]	3200' Buffer Zone
[Symbol]	3300' Buffer Zone
[Symbol]	3400' Buffer Zone
[Symbol]	3500' Buffer Zone
[Symbol]	3600' Buffer Zone
[Symbol]	3700' Buffer Zone
[Symbol]	3800' Buffer Zone
[Symbol]	3900' Buffer Zone
[Symbol]	4000' Buffer Zone
[Symbol]	4100' Buffer Zone
[Symbol]	4200' Buffer Zone
[Symbol]	4300' Buffer Zone
[Symbol]	4400' Buffer Zone
[Symbol]	4500' Buffer Zone
[Symbol]	4600' Buffer Zone
[Symbol]	4700' Buffer Zone
[Symbol]	4800' Buffer Zone
[Symbol]	4900' Buffer Zone
[Symbol]	5000' Buffer Zone
[Symbol]	5100' Buffer Zone
[Symbol]	5200' Buffer Zone
[Symbol]	5300' Buffer Zone
[Symbol]	5400' Buffer Zone
[Symbol]	5500' Buffer Zone
[Symbol]	5600' Buffer Zone
[Symbol]	5700' Buffer Zone
[Symbol]	5800' Buffer Zone
[Symbol]	5900' Buffer Zone
[Symbol]	6000' Buffer Zone
[Symbol]	6100' Buffer Zone
[Symbol]	6200' Buffer Zone
[Symbol]	6300' Buffer Zone
[Symbol]	6400' Buffer Zone
[Symbol]	6500' Buffer Zone
[Symbol]	6600' Buffer Zone
[Symbol]	6700' Buffer Zone
[Symbol]	6800' Buffer Zone
[Symbol]	6900' Buffer Zone
[Symbol]	7000' Buffer Zone
[Symbol]	7100' Buffer Zone
[Symbol]	7200' Buffer Zone
[Symbol]	7300' Buffer Zone
[Symbol]	7400' Buffer Zone
[Symbol]	7500' Buffer Zone
[Symbol]	7600' Buffer Zone
[Symbol]	7700' Buffer Zone
[Symbol]	7800' Buffer Zone
[Symbol]	7900' Buffer Zone
[Symbol]	8000' Buffer Zone
[Symbol]	8100' Buffer Zone
[Symbol]	8200' Buffer Zone
[Symbol]	8300' Buffer Zone
[Symbol]	8400' Buffer Zone
[Symbol]	8500' Buffer Zone
[Symbol]	8600' Buffer Zone
[Symbol]	8700' Buffer Zone
[Symbol]	8800' Buffer Zone
[Symbol]	8900' Buffer Zone
[Symbol]	9000' Buffer Zone
[Symbol]	9100' Buffer Zone
[Symbol]	9200' Buffer Zone
[Symbol]	9300' Buffer Zone
[Symbol]	9400' Buffer Zone
[Symbol]	9500' Buffer Zone
[Symbol]	9600' Buffer Zone
[Symbol]	9700' Buffer Zone
[Symbol]	9800' Buffer Zone
[Symbol]	9900' Buffer Zone
[Symbol]	10000' Buffer Zone

**ISSUED FOR BID**

Worcester County, Massachusetts  
Fitchburg Expansion Project  
Site Specific for:  
Wetland WL-WR-10

TE-812-288A-100-2032

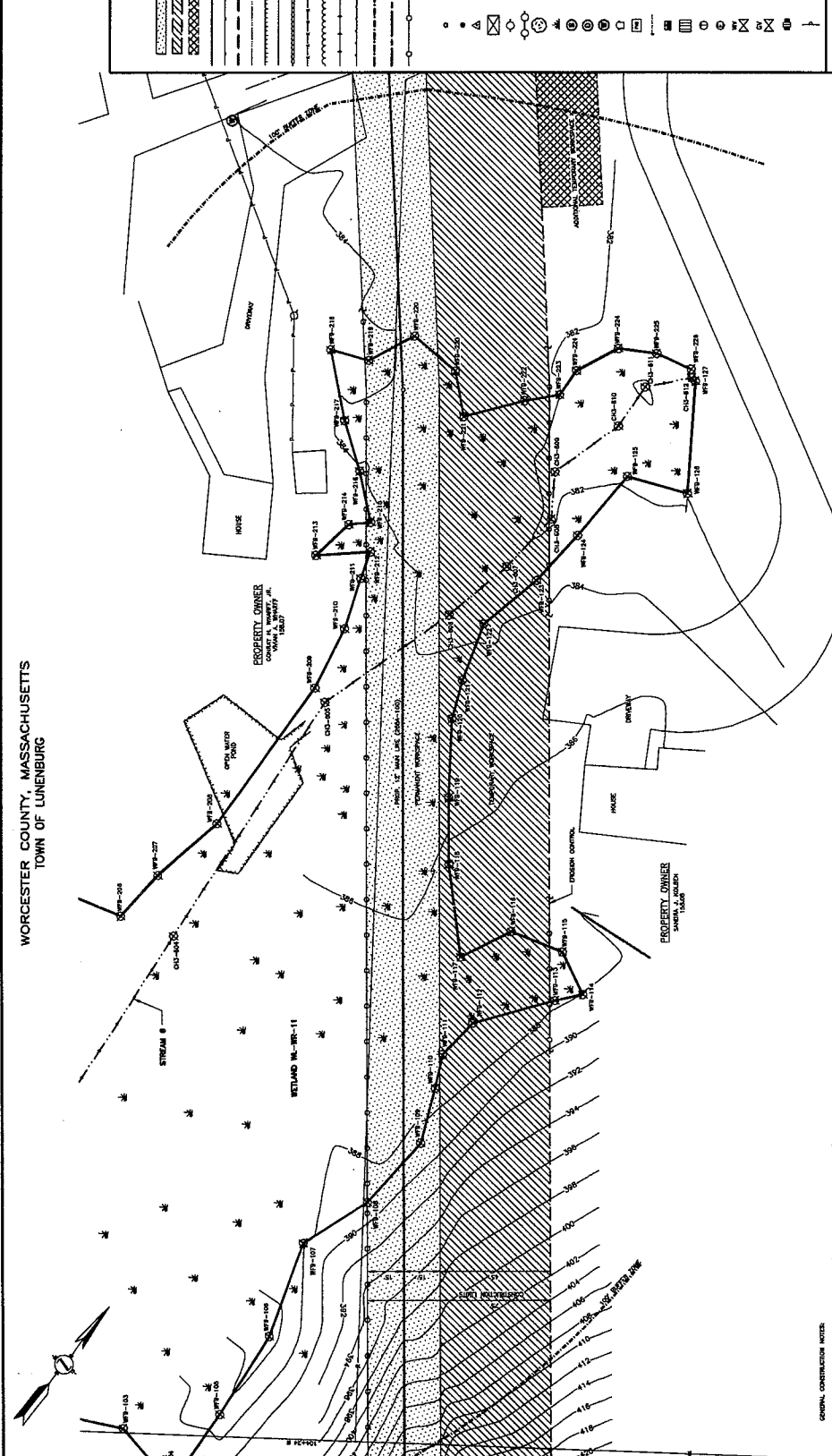
- GENERAL CONSTRUCTION NOTES**
1. Avoid the removal of surface trees and landscaping along the edge of the construction site unless necessary for the safe operation of construction equipment.
  2. Avoid the construction activities defined in each wetland for a distance of 100 feet to the boundary of the wetland. This includes, but is not limited to, the following activities:
    - a. Clearing, grubbing, or other site preparation activities.
    - b. Excavation, grading, or other earthmoving activities.
    - c. Filling, grading, or other earthmoving activities.
    - d. Construction of structures, roads, or other facilities.
    - e. Construction of ditches, drains, or other water control facilities.
    - f. Construction of any other facility that may impact the wetland.
  3. Ensure that construction activities do not result in the loss of any wetland area. If any wetland area is lost, it must be restored to its original condition or better.
  4. All construction activities must be completed within the specified time frame. Any construction activities that are not completed within the specified time frame will result in the loss of the wetland area.
  5. All construction activities must be completed within the specified time frame. Any construction activities that are not completed within the specified time frame will result in the loss of the wetland area.
  6. All construction activities must be completed within the specified time frame. Any construction activities that are not completed within the specified time frame will result in the loss of the wetland area.
  7. Ensure that construction activities do not result in the loss of any wetland area. If any wetland area is lost, it must be restored to its original condition or better.
  8. All construction activities must be completed within the specified time frame. Any construction activities that are not completed within the specified time frame will result in the loss of the wetland area.
  9. All construction activities must be completed within the specified time frame. Any construction activities that are not completed within the specified time frame will result in the loss of the wetland area.
  10. All construction activities must be completed within the specified time frame. Any construction activities that are not completed within the specified time frame will result in the loss of the wetland area.
  11. Construction activities must be completed within the specified time frame. Any construction activities that are not completed within the specified time frame will result in the loss of the wetland area.







WORCESTER COUNTY, MASSACHUSETTS  
TOWN OF LUNENBURG



**WATERBODIES IMPACT**

WETLAND / WATER BODY	SIZE (AC)	TYPE	IMPACT	MITIGATION
W-11R-11	0.14 AC	0.23 AC	0.08 AC	N/A

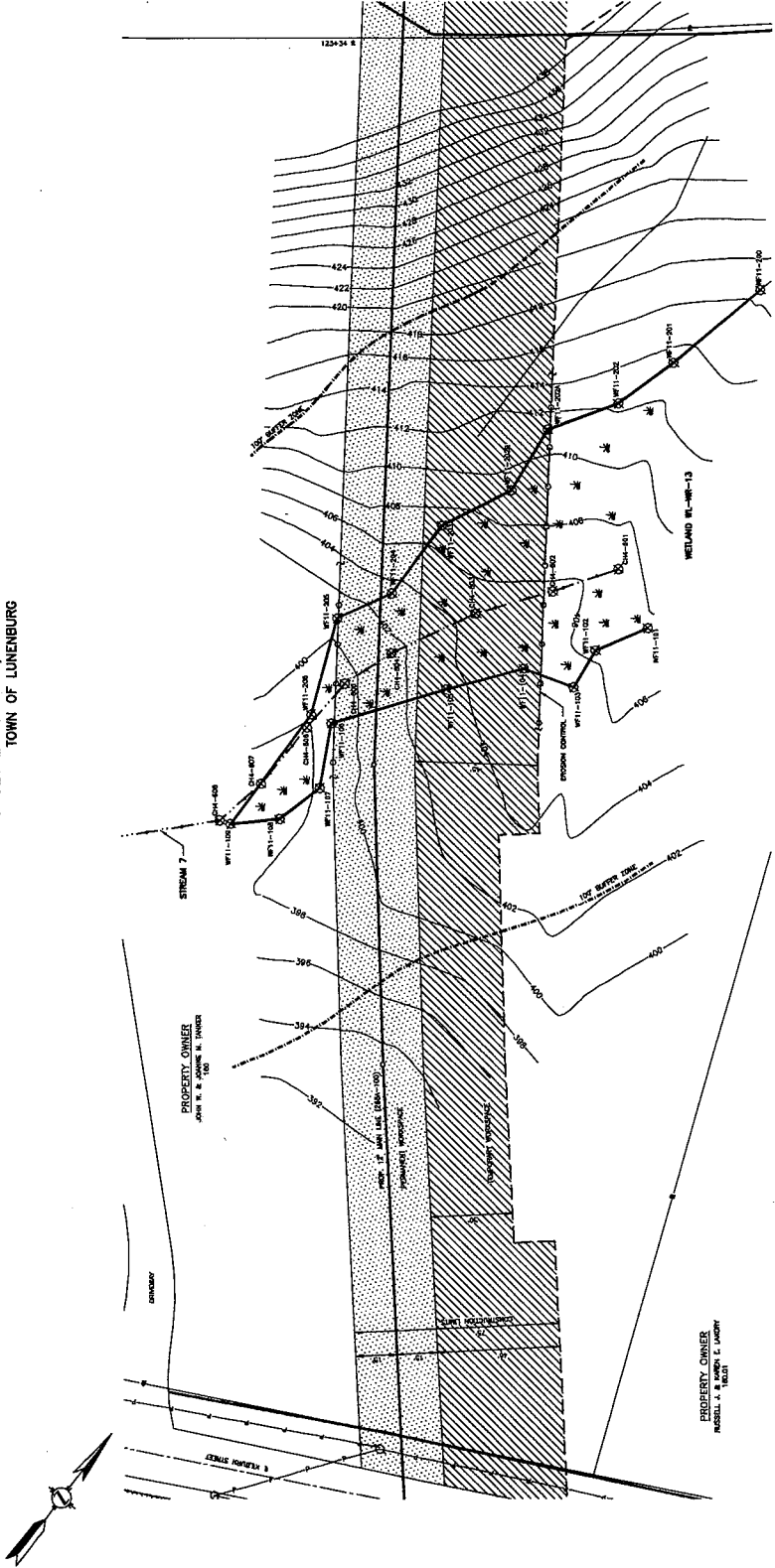


**LEGEND**

	Permanent Wetland
	Temporary Wetland
	Additional Wetland
	1/2 Acre Wetland
	1/4 Acre Wetland
	1/8 Acre Wetland
	1/16 Acre Wetland
	1/32 Acre Wetland
	1/64 Acre Wetland
	1/128 Acre Wetland
	1/256 Acre Wetland
	1/512 Acre Wetland
	1/1024 Acre Wetland
	1/2048 Acre Wetland
	1/4096 Acre Wetland
	1/8192 Acre Wetland
	1/16384 Acre Wetland
	1/32768 Acre Wetland
	1/65536 Acre Wetland
	1/131072 Acre Wetland
	1/262144 Acre Wetland
	1/524288 Acre Wetland
	1/1048576 Acre Wetland
	1/2097152 Acre Wetland
	1/4194304 Acre Wetland
	1/8388608 Acre Wetland
	1/16777216 Acre Wetland
	1/33554432 Acre Wetland
	1/67108864 Acre Wetland
	1/134217728 Acre Wetland
	1/268435456 Acre Wetland
	1/536870912 Acre Wetland
	1/1073741824 Acre Wetland
	1/2147483648 Acre Wetland
	1/4294967296 Acre Wetland
	1/8589934592 Acre Wetland
	1/17179869184 Acre Wetland
	1/34359738368 Acre Wetland
	1/68719476736 Acre Wetland
	1/137438953472 Acre Wetland
	1/274877907544 Acre Wetland
	1/549755815088 Acre Wetland
	1/1099511630176 Acre Wetland
	1/2199023260352 Acre Wetland
	1/4398046520704 Acre Wetland
	1/8796093041408 Acre Wetland
	1/17592186082816 Acre Wetland
	1/35184372165632 Acre Wetland
	1/70368744331264 Acre Wetland
	1/140737488662528 Acre Wetland
	1/281474977325056 Acre Wetland
	1/562949954650112 Acre Wetland
	1/1125899909300224 Acre Wetland
	1/2251799818600448 Acre Wetland
	1/4503599637200896 Acre Wetland
	1/9007199274401792 Acre Wetland
	1/18014398548803584 Acre Wetland
	1/36028797097607168 Acre Wetland
	1/72057594195214336 Acre Wetland
	1/144115188390428672 Acre Wetland
	1/288230376780857344 Acre Wetland
	1/576460753561714688 Acre Wetland
	1/1152921507123429376 Acre Wetland
	1/2305843014246858752 Acre Wetland
	1/4611686028493717504 Acre Wetland
	1/9223372056987435008 Acre Wetland
	1/18446744113974870016 Acre Wetland
	1/36893488227949740032 Acre Wetland
	1/73786976455899480064 Acre Wetland
	1/147573952911798960128 Acre Wetland
	1/295147905823597920256 Acre Wetland
	1/590295811647195840512 Acre Wetland
	1/1180591623294391681024 Acre Wetland
	1/2361183246588783362048 Acre Wetland
	1/4722366493177566724096 Acre Wetland
	1/9444732986355133448192 Acre Wetland
	1/18889465727110266896384 Acre Wetland
	1/37778931454220533792768 Acre Wetland
	1/75557862908441067585536 Acre Wetland
	1/151115725816882135171072 Acre Wetland
	1/302231451633764270342144 Acre Wetland
	1/604462903267528540684288 Acre Wetland
	1/1208925806535057081368576 Acre Wetland
	1/2417851613070114162737152 Acre Wetland
	1/4835703226140228325474304 Acre Wetland
	1/9671406452280456650948608 Acre Wetland
	1/19342812904560913101897216 Acre Wetland
	1/38685625809121826203794432 Acre Wetland
	1/77371251618243652407588864 Acre Wetland
	1/154742503236487304815177728 Acre Wetland
	1/309485006472974609630355456 Acre Wetland
	1/618970012945949219260710912 Acre Wetland
	1/1237940025891898438521421824 Acre Wetland
	1/2475880051783796877042843648 Acre Wetland
	1/4951760103567593754085687296 Acre Wetland
	1/9903520207135187508171374592 Acre Wetland
	1/19807040414270375016342741184 Acre Wetland
	1/39614080828540750032685482368 Acre Wetland
	1/79228161657081500065370964736 Acre Wetland
	1/158456323134163000130740929472 Acre Wetland
	1/316912646268326000261481859584 Acre Wetland
	1/633825292536652000522963719168 Acre Wetland
	1/1267650585073304001045927438336 Acre Wetland
	1/2535301170146608002091854876672 Acre Wetland
	1/5070602340293216004183709753344 Acre Wetland
	1/10141204680586432008367419506688 Acre Wetland
	1/20282409361172864016734839013376 Acre Wetland
	1/40564818722345728033469678026752 Acre Wetland
	1/81129637444691456066939356053504 Acre Wetland
	1/162259274889382912133878712107008 Acre Wetland
	1/324518549778765824267757424214016 Acre Wetland
	1/649037099557531648535514848428032 Acre Wetland
	1/1298074199115063270671029696856064 Acre Wetland
	1/2596148392230126541342059393712128 Acre Wetland
	1/5192296784460253082684118787424256 Acre Wetland
	1/1038459376932050615376823757484512 Acre Wetland
	1/2076918753864101230753647514969024 Acre Wetland
	1/4153837507728202461507295029938048 Acre Wetland
	1/8307675015456404923014590059876096 Acre Wetland
	1/16615350030912809846029181119752192 Acre Wetland
	1/33230700061825619692058362239504384 Acre Wetland
	1/66461400123651239384116724479008768 Acre Wetland
	1/132922800247302478768233449558017536 Acre Wetland
	1/265845600494604957536466899116035072 Acre Wetland
	1/531691200989209915072933798232070144 Acre Wetland
	1/1063382401978419830144667596464140288 Acre Wetland
	1/212676480395683966028933519292828576 Acre Wetland
	1/425352960791367932057867038585657152 Acre Wetland
	1/850705921582735864115735477171314304 Acre Wetland
	1/1701411843165471728231460954342628608 Acre Wetland
	1/3402823686330943456462921908685257216 Acre Wetland
	1/6805647372661886912925843817370514432 Acre Wetland
	1/13611294745323773825851687634741028864 Acre Wetland
	1/2722258949064754765770337527348205728 Acre Wetland
	1/5444517898129509531540675054696411536 Acre Wetland
	1/1088903579625901906308135010992823072 Acre Wetland
	1/2177807159251803812616270021985646144 Acre Wetland
	1/4355614318503607625232540043971292288 Acre Wetland
	1/8711228637007215250465080087942584576 Acre Wetland
	1/174224572740144305009301601748516911552 Acre Wetland
	1/34844914548028861001866320349703783104 Acre Wetland
	1/69689829096057722003732640699407566208 Acre Wetland
	1/139379658192115444007464813998811532416 Acre Wetland
	1/27875931638423088801492962799763064832 Acre Wetland
	1/55751863276846177602985925599526129664 Acre Wetland
	1/111503726553692353205911851190522517328 Acre Wetland
	1/223007453107384706411823702238105034656 Acre Wetland
	1/44601490621476941282364740447620069312

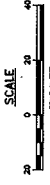


WORCESTER COUNTY, MASSACHUSETTS  
TOWN OF LUNENBURG



**WATERBODIES IMPACT**

WATERBODY	IMPACT	IMPACT TYPE	IMPACT AREA
WETLAND WL-WP-13	0.07 AC.	0.03 AC.	N/A
STREAM 7	0.07 AC.	0.03 AC.	N/A



**LEGEND**

	Permanent Wetlands
	Temporary Wetlands
	Additional Wetlands
	50' Buffer Zone
	100' Buffer Zone
	200' Buffer Zone
	300' Buffer Zone
	400' Buffer Zone
	500' Buffer Zone
	600' Buffer Zone
	700' Buffer Zone
	800' Buffer Zone
	900' Buffer Zone
	1000' Buffer Zone
	1100' Buffer Zone
	1200' Buffer Zone
	1300' Buffer Zone
	1400' Buffer Zone
	1500' Buffer Zone
	1600' Buffer Zone
	1700' Buffer Zone
	1800' Buffer Zone
	1900' Buffer Zone
	2000' Buffer Zone
	2100' Buffer Zone
	2200' Buffer Zone
	2300' Buffer Zone
	2400' Buffer Zone
	2500' Buffer Zone
	2600' Buffer Zone
	2700' Buffer Zone
	2800' Buffer Zone
	2900' Buffer Zone
	3000' Buffer Zone
	3100' Buffer Zone
	3200' Buffer Zone
	3300' Buffer Zone
	3400' Buffer Zone
	3500' Buffer Zone
	3600' Buffer Zone
	3700' Buffer Zone
	3800' Buffer Zone
	3900' Buffer Zone
	4000' Buffer Zone
	4100' Buffer Zone
	4200' Buffer Zone
	4300' Buffer Zone
	4400' Buffer Zone
	4500' Buffer Zone
	4600' Buffer Zone
	4700' Buffer Zone
	4800' Buffer Zone
	4900' Buffer Zone
	5000' Buffer Zone
	5100' Buffer Zone
	5200' Buffer Zone
	5300' Buffer Zone
	5400' Buffer Zone
	5500' Buffer Zone
	5600' Buffer Zone
	5700' Buffer Zone
	5800' Buffer Zone
	5900' Buffer Zone
	6000' Buffer Zone
	6100' Buffer Zone
	6200' Buffer Zone
	6300' Buffer Zone
	6400' Buffer Zone
	6500' Buffer Zone
	6600' Buffer Zone
	6700' Buffer Zone
	6800' Buffer Zone
	6900' Buffer Zone
	7000' Buffer Zone
	7100' Buffer Zone
	7200' Buffer Zone
	7300' Buffer Zone
	7400' Buffer Zone
	7500' Buffer Zone
	7600' Buffer Zone
	7700' Buffer Zone
	7800' Buffer Zone
	7900' Buffer Zone
	8000' Buffer Zone
	8100' Buffer Zone
	8200' Buffer Zone
	8300' Buffer Zone
	8400' Buffer Zone
	8500' Buffer Zone
	8600' Buffer Zone
	8700' Buffer Zone
	8800' Buffer Zone
	8900' Buffer Zone
	9000' Buffer Zone
	9100' Buffer Zone
	9200' Buffer Zone
	9300' Buffer Zone
	9400' Buffer Zone
	9500' Buffer Zone
	9600' Buffer Zone
	9700' Buffer Zone
	9800' Buffer Zone
	9900' Buffer Zone
	10000' Buffer Zone

ISSUED FOR BID

A. DATE FOR BIDDING	11/03/2010
B. DATE FOR BIDDING	11/03/2010
C. DATE FOR BIDDING	11/03/2010
D. DATE FOR BIDDING	11/03/2010
E. DATE FOR BIDDING	11/03/2010
F. DATE FOR BIDDING	11/03/2010
G. DATE FOR BIDDING	11/03/2010
H. DATE FOR BIDDING	11/03/2010
I. DATE FOR BIDDING	11/03/2010
J. DATE FOR BIDDING	11/03/2010
K. DATE FOR BIDDING	11/03/2010
L. DATE FOR BIDDING	11/03/2010
M. DATE FOR BIDDING	11/03/2010
N. DATE FOR BIDDING	11/03/2010
O. DATE FOR BIDDING	11/03/2010
P. DATE FOR BIDDING	11/03/2010
Q. DATE FOR BIDDING	11/03/2010
R. DATE FOR BIDDING	11/03/2010
S. DATE FOR BIDDING	11/03/2010
T. DATE FOR BIDDING	11/03/2010
U. DATE FOR BIDDING	11/03/2010
V. DATE FOR BIDDING	11/03/2010
W. DATE FOR BIDDING	11/03/2010
X. DATE FOR BIDDING	11/03/2010
Y. DATE FOR BIDDING	11/03/2010
Z. DATE FOR BIDDING	11/03/2010

**FITCHBURG EXPANSION PROJECT**  
**SITE SPECIFIC FOR**  
**WETLAND WL-WP-13**  
**WETLAND WL-WP-13**  
**WORCESTER COUNTY, MASSACHUSETTS**

Prepared by: [Firm Name]  
 Date: 11/03/2010  
 Scale: 1" = 100'

- GENERAL CONTRACTOR NOTES:**
1. Read the contract documents, including the drawings, specifications, and conditions of contract, and all amendments thereto, before starting work on this project.
  2. Immediately notify the architect in writing of any errors or omissions in the contract documents, including the drawings, specifications, and conditions of contract, and all amendments thereto, before starting work on this project.
  3. The contractor shall be responsible for obtaining all necessary permits and licenses for the work to be performed under this contract.
  4. The contractor shall be responsible for obtaining all necessary insurance and bonds for the work to be performed under this contract.
  5. The contractor shall be responsible for obtaining all necessary approvals and permits for the work to be performed under this contract.
  6. The contractor shall be responsible for obtaining all necessary approvals and permits for the work to be performed under this contract.
  7. The contractor shall be responsible for obtaining all necessary approvals and permits for the work to be performed under this contract.
  8. The contractor shall be responsible for obtaining all necessary approvals and permits for the work to be performed under this contract.
  9. The contractor shall be responsible for obtaining all necessary approvals and permits for the work to be performed under this contract.
  10. The contractor shall be responsible for obtaining all necessary approvals and permits for the work to be performed under this contract.
  11. The contractor shall be responsible for obtaining all necessary approvals and permits for the work to be performed under this contract.
  12. The contractor shall be responsible for obtaining all necessary approvals and permits for the work to be performed under this contract.
  13. The contractor shall be responsible for obtaining all necessary approvals and permits for the work to be performed under this contract.
  14. The contractor shall be responsible for obtaining all necessary approvals and permits for the work to be performed under this contract.
  15. The contractor shall be responsible for obtaining all necessary approvals and permits for the work to be performed under this contract.

**REVISIONS**

NO.	DATE	DESCRIPTION
1	11/03/2010	ISSUED FOR BID
2	11/03/2010	ISSUED FOR BID
3	11/03/2010	ISSUED FOR BID
4	11/03/2010	ISSUED FOR BID
5	11/03/2010	ISSUED FOR BID
6	11/03/2010	ISSUED FOR BID
7	11/03/2010	ISSUED FOR BID
8	11/03/2010	ISSUED FOR BID
9	11/03/2010	ISSUED FOR BID
10	11/03/2010	ISSUED FOR BID
11	11/03/2010	ISSUED FOR BID
12	11/03/2010	ISSUED FOR BID
13	11/03/2010	ISSUED FOR BID
14	11/03/2010	ISSUED FOR BID
15	11/03/2010	ISSUED FOR BID
16	11/03/2010	ISSUED FOR BID
17	11/03/2010	ISSUED FOR BID
18	11/03/2010	ISSUED FOR BID
19	11/03/2010	ISSUED FOR BID
20	11/03/2010	ISSUED FOR BID

**REFERENCE DRAWINGS**

NO.	DATE	DESCRIPTION
1	11/03/2010	ISSUED FOR BID
2	11/03/2010	ISSUED FOR BID
3	11/03/2010	ISSUED FOR BID
4	11/03/2010	ISSUED FOR BID
5	11/03/2010	ISSUED FOR BID
6	11/03/2010	ISSUED FOR BID
7	11/03/2010	ISSUED FOR BID
8	11/03/2010	ISSUED FOR BID
9	11/03/2010	ISSUED FOR BID
10	11/03/2010	ISSUED FOR BID
11	11/03/2010	ISSUED FOR BID
12	11/03/2010	ISSUED FOR BID
13	11/03/2010	ISSUED FOR BID
14	11/03/2010	ISSUED FOR BID
15	11/03/2010	ISSUED FOR BID
16	11/03/2010	ISSUED FOR BID
17	11/03/2010	ISSUED FOR BID
18	11/03/2010	ISSUED FOR BID
19	11/03/2010	ISSUED FOR BID
20	11/03/2010	ISSUED FOR BID

















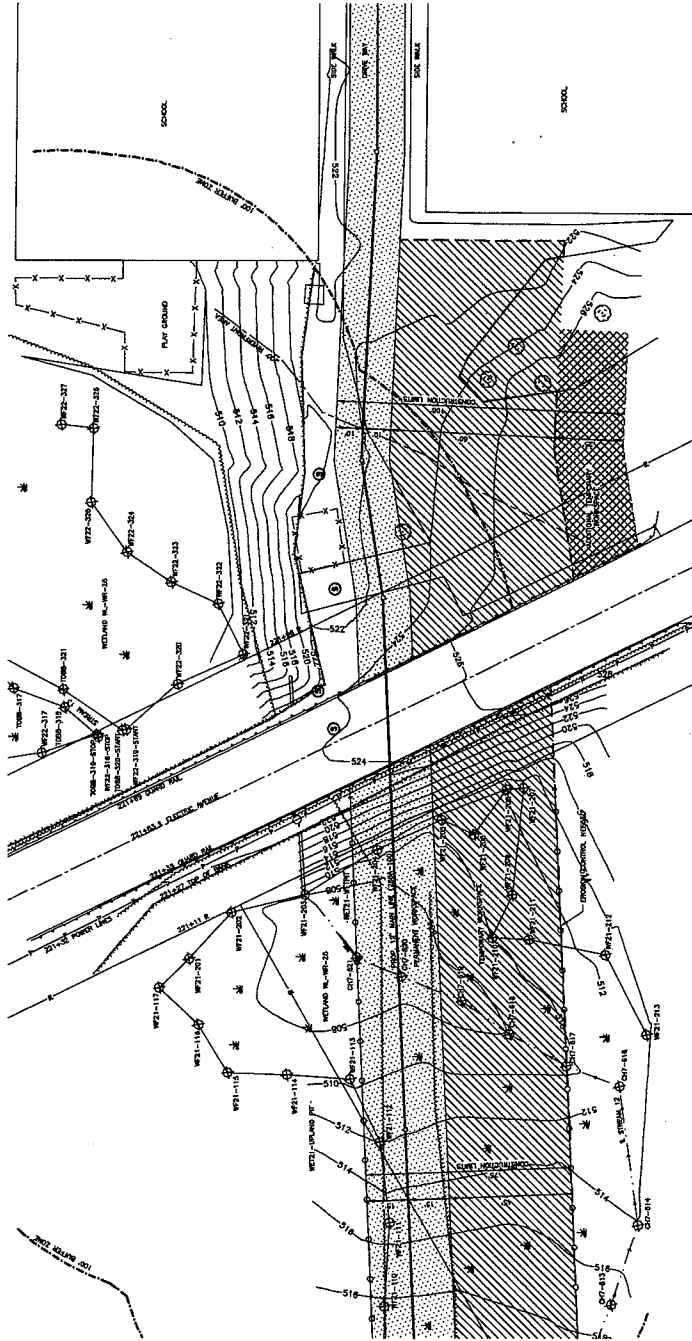








WORCESTER COUNTY, MASSACHUSETTS  
TOWN OF LUNENBURG



- NOTES:**
1. Avoid the removal of riparian trees and landscaping until the edge of the construction excavation is necessary for the safe completion of construction operations.
  2. Excavation activities shall be limited to the area shown on this plan. Excavation activities shall be limited to the area shown on this plan.
  3. Excavation activities shall be limited to the area shown on this plan. Excavation activities shall be limited to the area shown on this plan.
  4. Excavation activities shall be limited to the area shown on this plan. Excavation activities shall be limited to the area shown on this plan.
  5. Excavation activities shall be limited to the area shown on this plan. Excavation activities shall be limited to the area shown on this plan.
  6. Excavation activities shall be limited to the area shown on this plan. Excavation activities shall be limited to the area shown on this plan.
  7. Excavation activities shall be limited to the area shown on this plan. Excavation activities shall be limited to the area shown on this plan.
  8. Excavation activities shall be limited to the area shown on this plan. Excavation activities shall be limited to the area shown on this plan.
  9. Excavation activities shall be limited to the area shown on this plan. Excavation activities shall be limited to the area shown on this plan.
  10. Excavation activities shall be limited to the area shown on this plan. Excavation activities shall be limited to the area shown on this plan.
  11. Excavation activities shall be limited to the area shown on this plan. Excavation activities shall be limited to the area shown on this plan.

WATERBODIES IMPACT

WATERBODY / WETLAND	AREA (AC)	WATER	WETLAND
W-100-01	0.00 AC	0.00 AC	0.00 AC
W-100-02	0.00 AC	0.00 AC	0.00 AC
W-100-03	0.00 AC	0.00 AC	0.00 AC
W-100-04	0.00 AC	0.00 AC	0.00 AC
W-100-05	0.00 AC	0.00 AC	0.00 AC



**LEGEND**

	Permanent Wetlands
	Temporary Wetlands
	Wetland Buffer
	Proposed 17' Riparian Buffer
	Existing Easements
	No Survey
	Elevation
	Top of Bank
	Top of Road
	Utility Pole
	Edge of Road
	Approximate Location of Utility Pole
	Guard Rail
	100' Buffer Line
	200' Buffer Line
	Center Line
	Right-of-Way
	Public or Private Construction
	100' Buffer Line
	200' Buffer Line
	Center Line
	Right-of-Way
	Public or Private Construction
	100' Buffer Line
	200' Buffer Line
	Center Line
	Right-of-Way
	Public or Private Construction

ISSUED FOR BID

1. 100' BUFFER LINE	100' BUFFER LINE
2. 200' BUFFER LINE	200' BUFFER LINE
3. CENTER LINE	CENTER LINE
4. RIGHT-OF-WAY	RIGHT-OF-WAY
5. PUBLIC OR PRIVATE CONSTRUCTION	PUBLIC OR PRIVATE CONSTRUCTION
6. 100' BUFFER LINE	100' BUFFER LINE
7. 200' BUFFER LINE	200' BUFFER LINE
8. CENTER LINE	CENTER LINE
9. RIGHT-OF-WAY	RIGHT-OF-WAY
10. PUBLIC OR PRIVATE CONSTRUCTION	PUBLIC OR PRIVATE CONSTRUCTION

**REVISIONS**

NO.	DATE	DESCRIPTION
1	10/15/20	ISSUED FOR BID
2	10/15/20	ISSUED FOR BID
3	10/15/20	ISSUED FOR BID
4	10/15/20	ISSUED FOR BID
5	10/15/20	ISSUED FOR BID
6	10/15/20	ISSUED FOR BID
7	10/15/20	ISSUED FOR BID
8	10/15/20	ISSUED FOR BID
9	10/15/20	ISSUED FOR BID
10	10/15/20	ISSUED FOR BID

**PROJECT INFORMATION**

PROJECT: FITCHBURG EXPANSION PROJECT  
SITE SPECIFIC FOR: ELECTRIC AVENUE CROSSING  
LOCATION: WORCESTER COUNTY, MASSACHUSETTS  
DATE: 10/15/20  
DRAWN BY: [Name]  
CHECKED BY: [Name]  
APPROVED BY: [Name]

**REVISIONS**

NO.	DATE	DESCRIPTION
1	10/15/20	ISSUED FOR BID
2	10/15/20	ISSUED FOR BID
3	10/15/20	ISSUED FOR BID
4	10/15/20	ISSUED FOR BID
5	10/15/20	ISSUED FOR BID
6	10/15/20	ISSUED FOR BID
7	10/15/20	ISSUED FOR BID
8	10/15/20	ISSUED FOR BID
9	10/15/20	ISSUED FOR BID
10	10/15/20	ISSUED FOR BID

**REVISIONS**

NO.	DATE	DESCRIPTION
1	10/15/20	ISSUED FOR BID
2	10/15/20	ISSUED FOR BID
3	10/15/20	ISSUED FOR BID
4	10/15/20	ISSUED FOR BID
5	10/15/20	ISSUED FOR BID
6	10/15/20	ISSUED FOR BID
7	10/15/20	ISSUED FOR BID
8	10/15/20	ISSUED FOR BID
9	10/15/20	ISSUED FOR BID
10	10/15/20	ISSUED FOR BID

**REVISIONS**

NO.	DATE	DESCRIPTION
1	10/15/20	ISSUED FOR BID
2	10/15/20	ISSUED FOR BID
3	10/15/20	ISSUED FOR BID
4	10/15/20	ISSUED FOR BID
5	10/15/20	ISSUED FOR BID
6	10/15/20	ISSUED FOR BID
7	10/15/20	ISSUED FOR BID
8	10/15/20	ISSUED FOR BID
9	10/15/20	ISSUED FOR BID
10	10/15/20	ISSUED FOR BID











## 7.0 Construction Impacts and Mitigation

Construction and operation of the proposed pipeline replacement will include temporary impacts to wetland resources. The proposed facilities will be designed, constructed, tested, operated, and maintained to conform with or exceed federal, state, and local requirements including 49 CFR Part 192, "Transportation of Natural and Other Gas by Pipeline: Minimum Federal Safety Standards", 18 CFR Part 157.206(d), "Guidelines to be Followed by Natural Gas Pipeline Companies in the Planning, Clearing, and Maintenance of Rights-of-Way and the Construction of Aboveground Facilities." Additionally, Tennessee will comply with the Commission's Upland Erosion Control, Revegetation and Maintenance Plan [01-17-03 version] ("Plan") and the Commission's Wetland and Waterbody Construction and Mitigation Procedures [01-17-03 version] ("Procedures") as contained in Appendix A, of Section IV - Appendix D - ER. Tennessee will be requesting a variance from Section VI, B, 1 of the Commission Procedures for ATWS and access roads within 50 feet of wetland boundaries. A Spill Prevention Control and Countermeasure ("SPCC") Plan, an Unanticipated Discovery Plan for cultural resources and a Waste Management Plan comprise the Project's construction BMPs. Copies of these BMPs have been provided in Appendix C of Section IV - Appendix D - ER.

The typical construction ROW width for the Project will be 70 to 80 feet and will generally consist of 20 and 30 feet of permanently maintained ROW and 50 feet of temporary construction workspace. Temporary workspace within wetlands will be limited to 75 feet to minimize adverse impacts, in accordance with Commission guidelines. The 20 and 30-foot permanent ROW will be consistent within wetlands as well, but only a 10-foot wide area centered over the pipeline will be maintained in an herbaceous or scrub-shrub vegetative state.

Construction of the Project will result in approximately 7.78 acres of temporary impacts to wetlands (See Table 5). No long-term impacts to existing PEM and PSS wetlands are expected as a result of the Project, as these wetlands will be allowed to revert to the pre-construction vegetation cover type upon completion of pipeline installation.

Temporary wetland impacts may include soil disturbance, temporary alteration of hydrology and loss of vegetation during construction. Upon completion of construction, topsoil, contour elevations and hydrologic patterns will be restored to pre-construction conditions to promote the reestablishment of hydrophytic vegetation. Woody vegetation will be allowed to regenerate within the ROW except for the area centered over the pipeline that will be maintained in an herbaceous/scrub-shrub state to allow for inspection and maintenance of the pipeline once it is in service. Additionally, trees within 15 feet of the pipeline greater than 15 feet in height will be selectively cut and removed from the permanent ROW.

Tennessee will protect and minimize potential adverse impacts on wetlands using construction procedures specified within the Commission Wetland and Waterbody Construction and Mitigation Procedures and include the following:

- Limiting the amount of equipment and construction activities within wetlands to minimize soil disturbance
- Restoring wetlands to their original configuration and contours;
- Stabilizing upland areas near wetlands with erosion control measures and vegetative cover as soon as possible after backfilling;

- Inspecting the ROW periodically during and after construction and repairing any erosion control or restoration features as needed until permanent revegetation is successful.

Tennessee will utilize one of the following three methods for crossing wetlands during construction:

- Standard Pipeline Construction
- Conventional Wetland Construction
- Push/Pull Wetland Construction

#### **Standard Pipeline Construction**

Standard Pipeline Construction will be utilized in wetlands where soils are non-saturated and able to support construction equipment at the time of crossing. This method requires segregation of topsoil from subsoil along the trenchline, trench excavation, pipe laying, backfilling and grade restoration. Erosion control measures including site specific contouring, permanent slope breakers, mulching, and reseeding or sodding with soil-holding vegetation will be implemented. Contouring will be accomplished using acceptable excess soils from construction.

#### **Conventional Wetland Construction**

Conventional Wetland Construction will be used for crossing wetlands with saturated soils or soils unable to support construction equipment. Prior to crossing and movement of construction equipment through these wetlands, the ROW will be stabilized using timber mats or corduroy roads to allow for a stable, safe working condition.

Unless soils are saturated, the top 12 inches of wetland soil over the trenchline will be segregated. Trench spoil will be temporarily piled in a ridge along the pipeline trench. Gaps in the spoil pile will be left at appropriate intervals to provide for natural circulation or drainage of water. While the trench is dug, the pipeline will be assembled in a staging area located in an upland area. After the pipeline is lowered into the trench, wide track bulldozers or backhoes supported on swamp mats will be used for backfill, final cleanup, and grading. This method will minimize the amount of equipment and travel in wetland areas. If dry conditions exist within the wetland, the pipe fabrication will occur in the wetland and normal cross-country construction practices will be used.

#### **Push-Pull Technique**

Construction in saturated wetland areas may involve the "push-pull technique". Push and pull techniques involve pushing the prefabricated pipe from the edge of the wetland or pulling the pipe with a winch from the opposite bank of the wetland into the trench. The trench will be excavated using a backhoe, dragline, or clamshell dredge. The excavated material will be stored adjacent to the trench. The pipe will be stored and joined at staging areas (push and pull sites) located outside the wetland. Floats may be attached temporarily to give the pipe positive buoyancy. After floating the pipe into place, these floats will be cut and the negatively buoyant pipe will settle to the bottom of the ditch. This operation will be repeated, with pipe sections fabricated, pushed into place, and welded together, until the wetland crossing is complete. The excavated material will then be placed over the pipe to backfill in the trench.

## **7.1 Minimization of Impacts**

To minimize impacts to wetlands, Tennessee will implement the wetland construction procedures described within the Commission Procedures. Tennessee has reduced the typical construction ROW through wetlands, and, during operation of the Project, up to 10 feet of the permanent ROW, centered over the pipeline, will be maintained within wetlands at an early successional stage in accordance with Commission requirements. In forested wetlands, Tennessee will minimize tree clearing to the extent practicable while maintaining safe construction conditions.

Tennessee will protect and minimize potential adverse impacts to wetlands by expediting construction in and around wetlands, restoring wetlands to their original configurations and contours, segregating topsoil during excavation, permanently stabilizing upland areas near wetlands as soon as possible after backfilling, inspecting the ROW periodically during and after construction and repairing any erosion control or restoration features until permanent revegetation is successful. All jurisdictional wetland crossings will require authorization from USACE under Section 404 of the Clean Water Act and MADEP, and Tennessee will comply with applicable permit conditions as issued by these agencies.

## **7.2 Aboveground Facilities**

Construction and operation of the proposed pig launcher and receiver will not impact any wetlands or waterbodies as none of these environmental resource areas are located in the vicinity of the Project location. Tennessee will provide mitigation for any possible land impacts resulting from construction through adherence to the 2003 Commission Plan and Procedures and Tennessee's Construction BMP's.