



U.S. Department of Agriculture
Natural Resources Conservation
Service

Conservation Security Program Minnesota 2005

375 Jackson Street, Suite 600 • St. Paul, MN 55101 • (651) 602-7859
• www.mn.nrcs.usda.gov



A few of some of the 7000 trees planted for wildlife on the Loxtercamp farm in the last 25 years.



Second cutting on the Loxtercamp farm. Legumes are the most important crop in the Loxtercamp's Stewardship farm plan.



Left-Right William Hunt, State Conservationist, Theresa Loxtercamp, Merlin Bartz, Regional Assistant Chief and Tom Loxtercamp

The Loxtercamp family was recognized by USDA's Natural Resources Conservation Service as the state's first 2005 Conservation Security Program (CSP) contract at a signing ceremony on July 28, 2005 in Sauk Centre, MN.

CSP is a voluntary program that rewards landowners for their conservation stewardship and improvements that have been made to soil, water, air, energy, plant, and animal life.

Proof that even small farms are vital in conservation

The Loxtercamps have a number of existing conservation practices on their farming operation in rural Stearns County, Minnesota. The Loxtercamps exemplify sustainability by the farming practices they utilize in their farming operation. The soils on their farm are nearly level to undulating, moderately well drained, medium textured soils which were formed in glacial till on uplands.

The remaining acreage consists of woodland and grassland managed primarily for wildlife. The Loxtercamps have owned and operated their farming operation since 1978.

The farming operation consists of 50 milking Holstein cows. Their typical crop rotation consists of corn for grain and silage, alfalfa and tame hay land and small grains. This crop rotation is an excellent method of sustaining soil quality. The 200 acre Loxtercamp farm has 150 acres enrolled into CSP.

The Loxtercamps follow a nutrient and pest management system which utilizes manure from the dairy operation as the primary fertilizer additive. The manure is tested and applied at the University of Minnesota rates. The Loxtercamp farm is enrolled at Tier III of the CSP, which indicates that the soil, water, air, plant and livestock resources on their farm are adequately protected from degradation.

Minnesota CSP Quick Facts for 2005:

Watersheds: 7

Blue Earth River
Red Lake
Redeye
Redwood
Root
Sauk
Upper Wapsipinicom

Watershed Acreage:
3,594,700 acres

Estimated Number of
Farms & Ranches: 8,443

Cropland: 1,984,000 acres

Grazing Land: 376,000

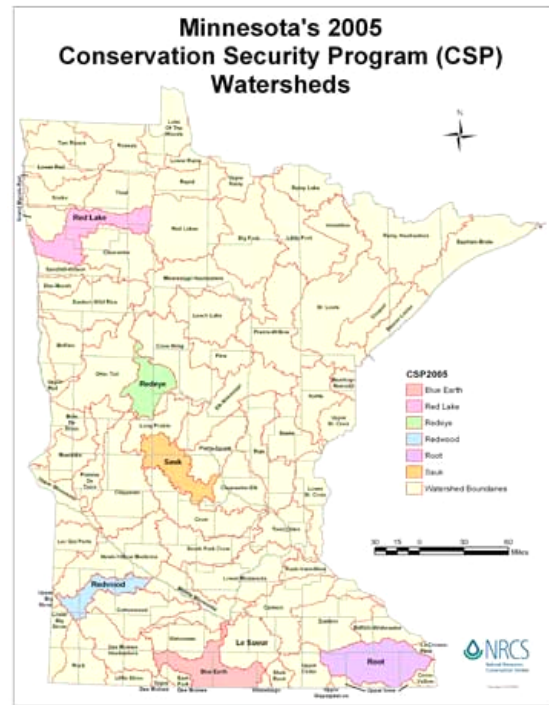
CSP Participation:

Sought info on CSP: 4,900
Attended workshops: 3,500
Eligible Applicants 564

Typical Enhancements:

- Conservation Tillage
- Energy Management
- Wildlife Management
- Soil Quality

Minnesota 2005 CSP Highlights



Watershed	Total CSP Applications Approved	Tier 1	Tier II	Tier III
Blue Earth	43	33	9	1
Red Lake	46	38	6	2
Redeye	73	61	12	0
Redwood	54	50	4	0
Root	198	167	20	11
Sauk	148	105	40	3
Upper Wapsipinicom	2	2	0	0
TOTAL Contracts	564	456	91	17
TOTAL '05 Payments (Approximate)	\$4.2 Million	\$3.1 Million	\$944,000	\$170,000

USDA is an equal opportunity provider and employer.

MN CSP 2005