

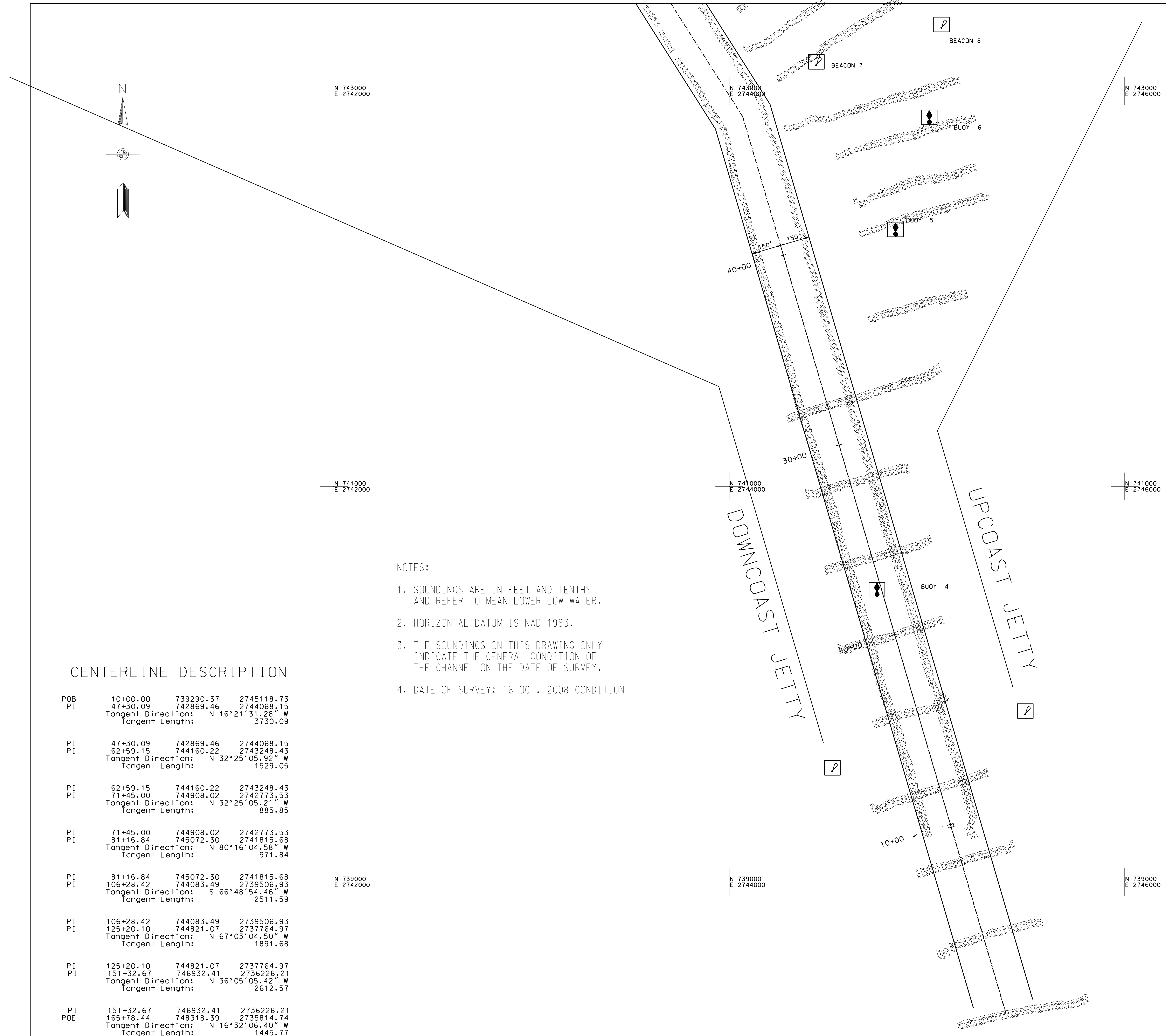
No.	DATE	APPROV.	DESCRIPTION
No. 1	DATE	APPROV.	DESCRIPTION
No. 2	DATE	APPROV.	DESCRIPTION
No. 3	DATE	APPROV.	DESCRIPTION
No. 4	DATE	APPROV.	DESCRIPTION
No. 5	DATE	APPROV.	DESCRIPTION
No. 6	DATE	APPROV.	DESCRIPTION
No. 7	DATE	APPROV.	DESCRIPTION
No. 8	DATE	APPROV.	DESCRIPTION
No. 9	DATE	APPROV.	DESCRIPTION
No. 10	DATE	APPROV.	DESCRIPTION
No. 11	DATE	APPROV.	DESCRIPTION
No. 12	DATE	APPROV.	DESCRIPTION
No. 13	DATE	APPROV.	DESCRIPTION
No. 14	DATE	APPROV.	DESCRIPTION
No. 15	DATE	APPROV.	DESCRIPTION
No. 16	DATE	APPROV.	DESCRIPTION
No. 17	DATE	APPROV.	DESCRIPTION
No. 18	DATE	APPROV.	DESCRIPTION
No. 19	DATE	APPROV.	DESCRIPTION
No. 20	DATE	APPROV.	DESCRIPTION

DATE OF SURVEY	21 OCT 08
DESIGN NO.	9239
DESIGN CODE	
FIG. NAME	
ANG. SCALE	1" = 200'

SUBMITTED BY	DATE
DESIGNED BY	DATE
REVIEWED BY	DATE
SUBMITTED BY	DATE

U.S. ARMY ENGINEERS DISTRICT  
 CHARLESTON, SOUTH CAROLINA  
 Horry County South Carolina  
 9239  
 SHEET 2 OF 4

LITTLE RIVER INLET  
 CONDITION SURVEY  
 9239  
 SHEET 2 OF 4



- NOTES:
- SOUNDINGS ARE IN FEET AND TENTHS AND REFER TO MEAN LOWER LOW WATER.
  - HORIZONTAL DATUM IS NAD 1983.
  - THE SOUNDINGS ON THIS DRAWING ONLY INDICATE THE GENERAL CONDITION OF THE CHANNEL ON THE DATE OF SURVEY.
  - DATE OF SURVEY: 16 OCT. 2008 CONDITION

CENTERLINE DESCRIPTION

PBB	10+00.00	739290.37	2745118.73
PI	47+30.09	742869.46	2744068.15
		Tangent Direction: N 16°21'31.28" W	
		Tangent Length: 3730.09	
PI	47+30.09	742869.46	2744068.15
PI	62+59.15	744160.22	2743248.43
		Tangent Direction: N 32°25'05.92" W	
		Tangent Length: 1529.05	
PI	62+59.15	744160.22	2743248.43
PI	71+45.00	744908.02	2742773.53
		Tangent Direction: N 32°25'05.21" W	
		Tangent Length: 885.85	
PI	71+45.00	744908.02	2742773.53
PI	81+16.84	745072.30	2741815.68
		Tangent Direction: N 80°16'04.58" W	
		Tangent Length: 971.84	
PI	81+16.84	745072.30	2741815.68
PI	106+28.42	744083.49	2739506.93
		Tangent Direction: S 66°48'54.46" W	
		Tangent Length: 2511.59	
PI	106+28.42	744083.49	2739506.93
PI	125+20.10	744821.07	2737764.97
		Tangent Direction: N 67°03'04.50" W	
		Tangent Length: 1891.68	
PI	125+20.10	744821.07	2737764.97
PI	151+32.67	746932.41	2736226.21
		Tangent Direction: N 36°05'05.42" W	
		Tangent Length: 2612.57	
PI	151+32.67	746932.41	2736226.21
PDE	165+78.44	748318.39	2735814.74
		Tangent Direction: N 16°32'06.40" W	
		Tangent Length: 1445.77	

