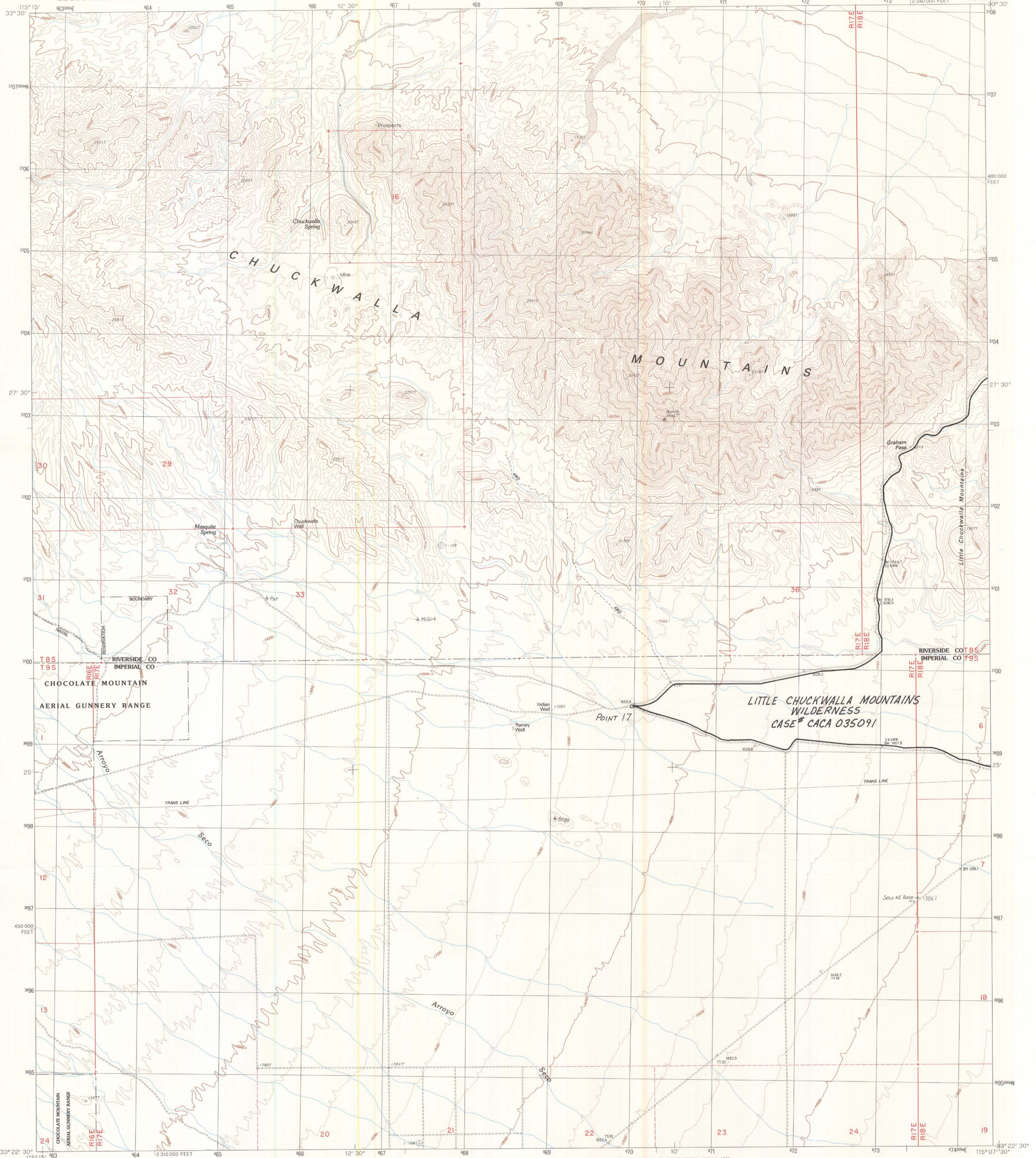
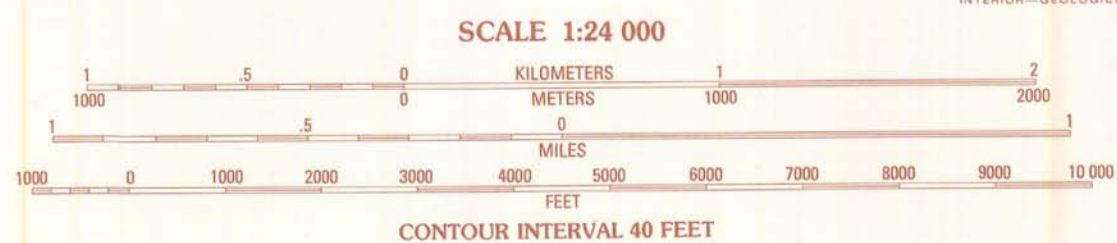


OCT 15 1988



PRODUCED BY THE UNITED STATES GEOLOGICAL SURVEY
CONTROL BY USGS, NOS/NOAA, USCE
COMPILED FROM AERIAL PHOTOGRAPHS TAKEN 1975 AND 1984
FIELD CHECKED 1988. MAP EDITED 1988.
PROJECTION LAMBERT CONFORMAL CONIC
GRID: 1000-METER UNIVERSAL TRANSVERSE MERCATOR ZONE 11
10,000-FOOT STATE GRID TICKS CALIFORNIA ZONE 6
UTM GRID DECLINATION 1927 NORTH AMERICAN DATUM
To place on the predicted North American Datum of 1983,
move the projection lines as shown by dashed corner ticks
(2 meters south / 75 meters east)
There may be private inholdings within the boundaries of any
Federal and State Reservations shown on this map
No distinction made between houses, barns, and other buildings
Where omitted, land lines have not been established or are not
shown because of insufficient data

PROVISIONAL MAP
Produced from original
manuscript drawings. Information
shown as of date of
photography.



CONTROL ELEVATIONS SHOWN TO THE NEAREST 0.1 FOOT
OTHER ELEVATIONS SHOWN TO THE NEAREST FOOT
To convert meters to feet multiply by 3.2808
To convert feet to meters multiply by 0.3048

THIS MAP COMPLIES WITH NATIONAL MAP ACCURACY STANDARDS
FOR SALE BY U. S. GEOLOGICAL SURVEY, DENVER, COLORADO 80225, OR RESTON, VIRGINIA 22092

1	2	3	1 Pilot Mtn.
4	5	4 Augustin Pass	5 Little Chuckwalla Mts.
6	7	6 Lion Hill Mts.	7 Peeling Wall Mts.
8		8 Little Mule Mts.	

ORIGINAL
FINAL

ROAD LEGEND
Improved Road
Unimproved Road
Trail
Interstate Route U.S. Route State Route

CHUCKWALLA SPRING, CALIF.
PROVISIONAL EDITION 1988

33115-D2-TF-024

ISBN 0-607-10648-0
9 780607 106848