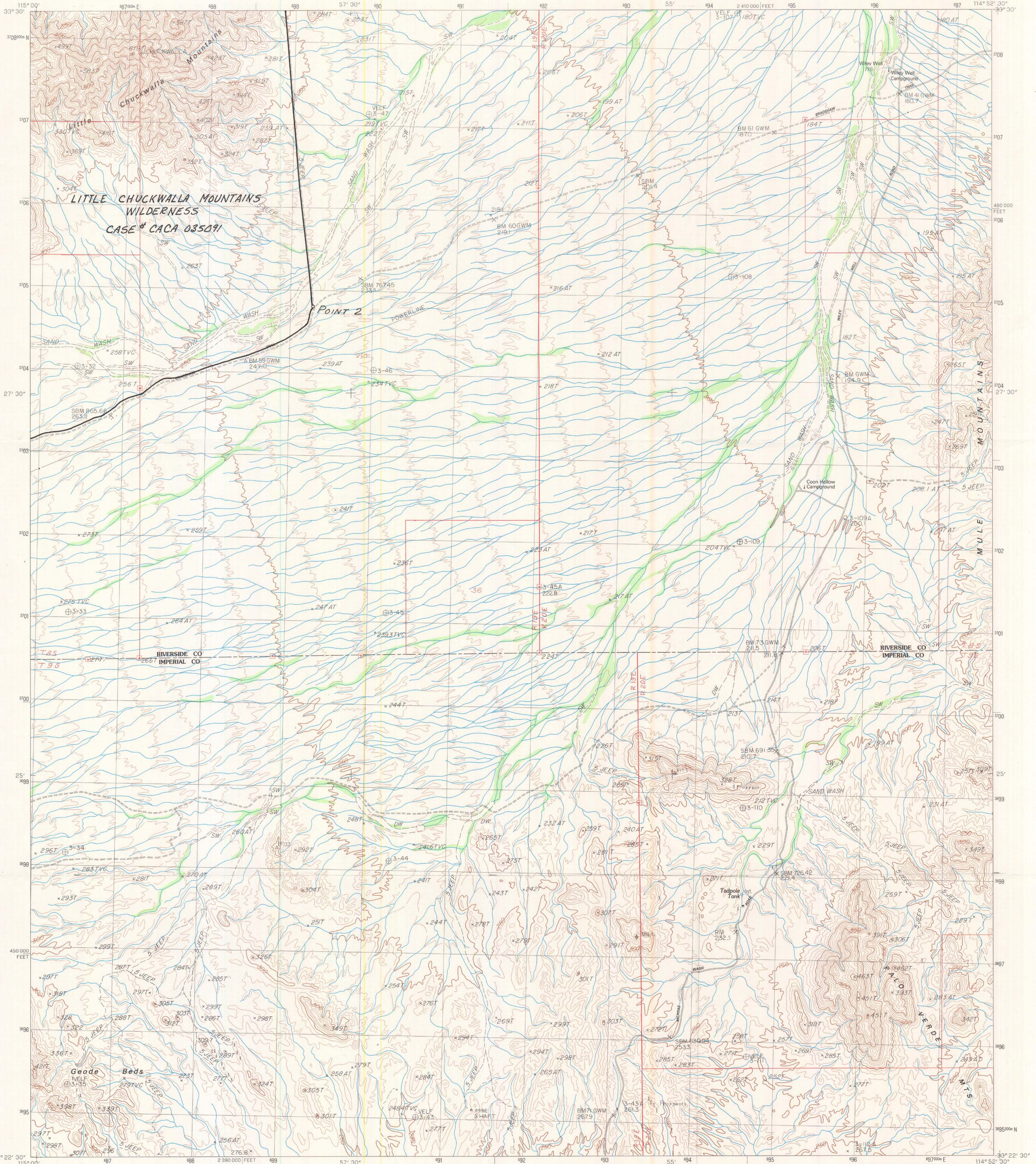
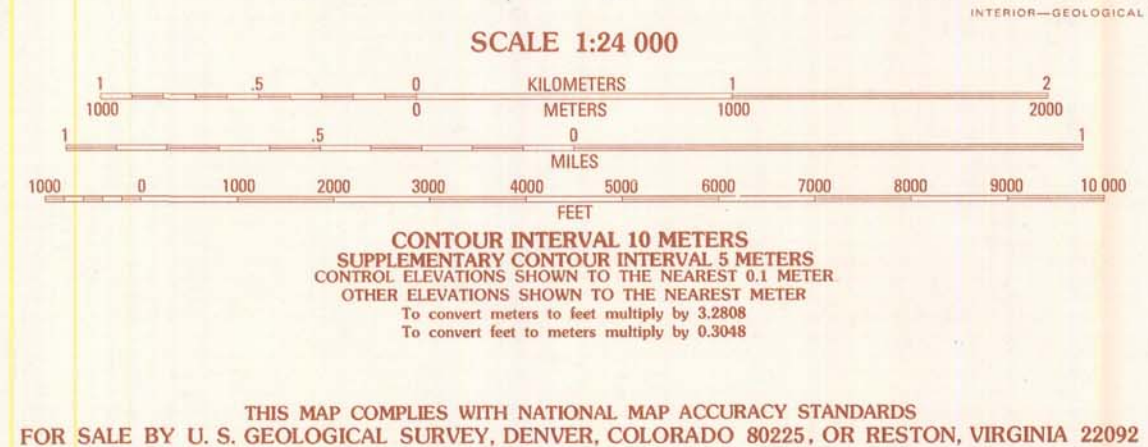


OCT 15 1988



PRODUCED BY THE UNITED STATES GEOLOGICAL SURVEY
CONTROL BY U.S.G.S. NOS/NOAA
COMPILED FROM AERIAL PHOTOGRAPHS TAKEN
FIELD CHECKED 1978 MAP EDITED 1983
PROJECTION UNIVERSAL TRANSVERSE MERCATOR
GRID 1000-METER UNIVERSAL TRANSVERSE MERCATOR ZONE 11
10,000-FOOT STATE GRID TICKS CALIFORNIA ZONE 6
UTM GRID DECLINATION 1983 EAST
1980 MAGNETIC NORTH DECLINATION 13°30' EAST
VERTICAL DATUM NATIONAL GEODETIC DATUM OF 1929
HORIZONTAL DATUM 1927 NORTH AMERICAN DATUM
To place on the predicted North American Datum of 1983,
move the projection lines as shown by dashed corner ticks
(2 meters south/74 meters east)
There may be private inholdings within the boundaries of any
Federal and State Reservations shown on this map
Where omitted, land lines have not been established
or are not shown because of insufficient data.

PROVISIONAL MAP
Produced from original
manuscript drawings. Information
shown as of date of
field check.



CONTOURS AND ELEVATIONS IN METERS
ROAD LEGEND

Improved Road.....
Unimproved Road.....
Trail.....
Interstate Route U.S. Route State Route

QUADRANGLE LOCATION

1	2	3	4	5	6	7	8
East of Aztec Mines	Hopkins Well	Rosevelt Mine	Little Chuckwalla Mts.	Thumb Peak	West of Little Mule Mts.	Palo Verde Peak	Palo Verde Peak

ORIGINAL
FINAL

WILEY WELL, CALIF.
PROVISIONAL EDITION 1983
33114-D8-TM-024

THIS MAP COMPLIES WITH NATIONAL MAP ACCURACY STANDARDS
FOR SALE BY U.S. GEOLOGICAL SURVEY, DENVER, COLORADO 80225, OR RESTON, VIRGINIA 22092