

Table I-1
Chain of Command for Reservoir Operations
Decisions at Tropicana Detention Basin
Revised June 1999

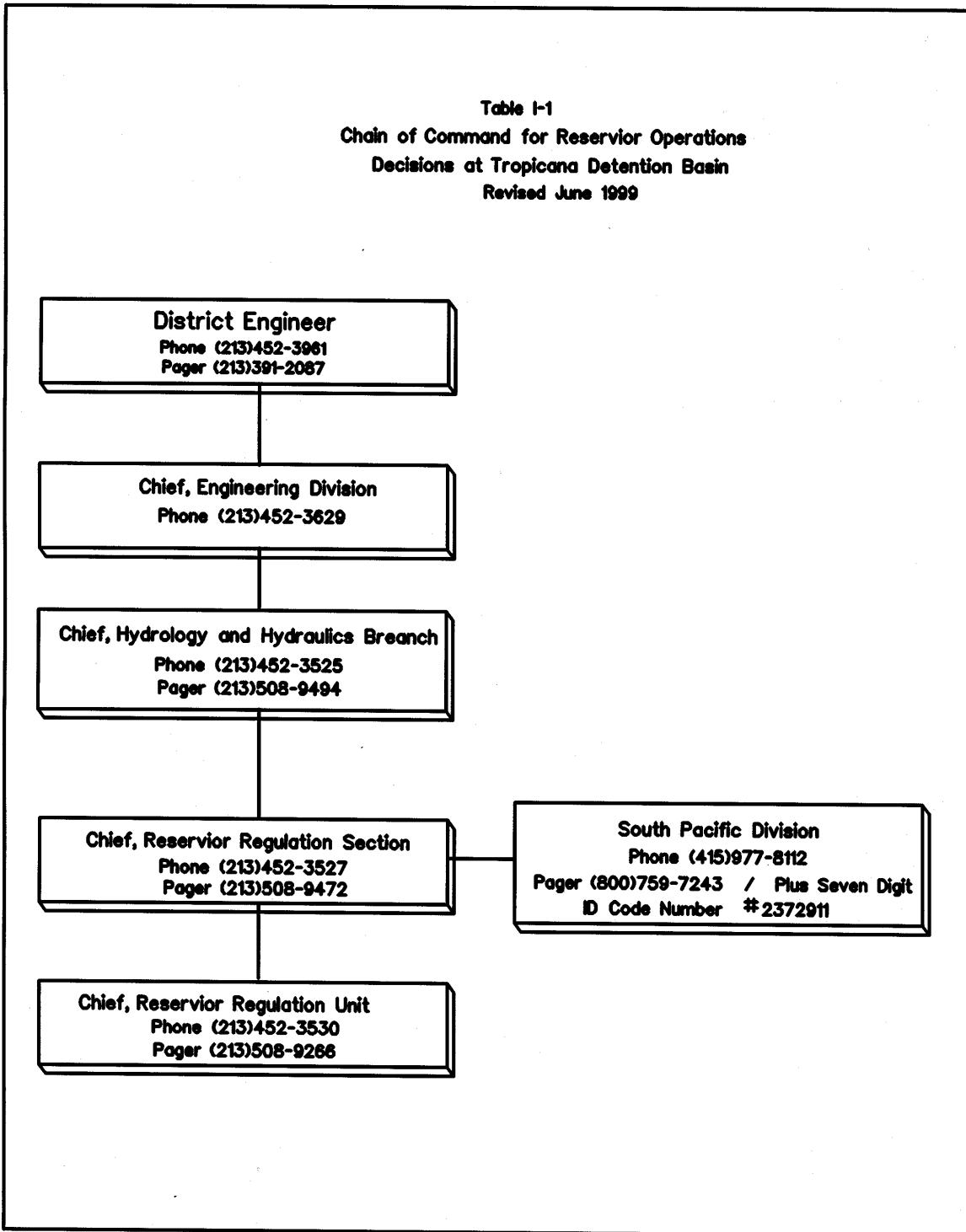
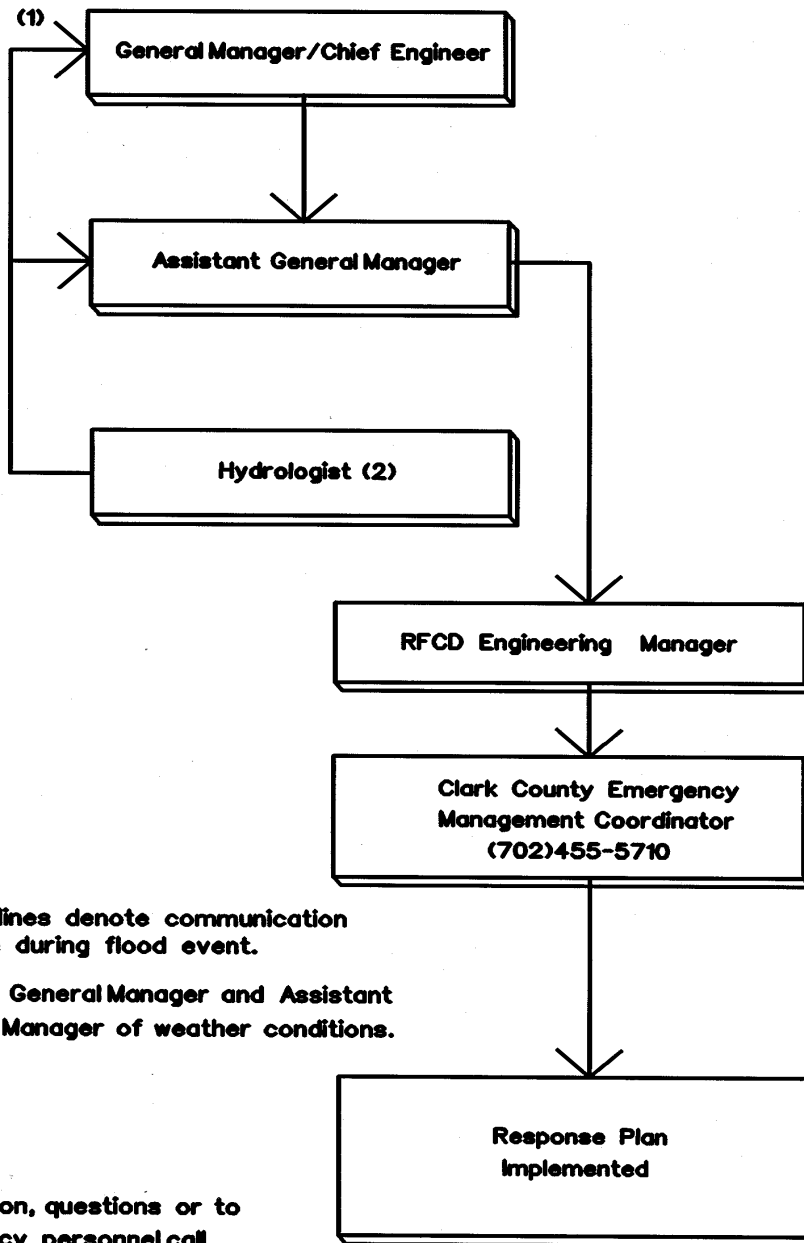


Table I-2
Chain of Command for Response Plan
Implementation at Tropicana Detention Basin
Revised June 1999



Note:

- (1) Arrowed lines denote communication sequence during flood event.
- (2) Apprises General Manager and Assistant General Manager of weather conditions.

For information, questions or to contact agency personnel call
Phone No. (702) 455-3139

Table I-3
Tropicana Detention Basin Area Table¹

Elevation (Feet, NAVD88)	Area - North Bay (Acres)	Area - South Bay (Acres)	Total Storage (Acres)
2251.60	0	0	0
2252	0.1	0.2	0.3
2253	0.2	0.5	0.7
2254	0.3	0.9	1.2
2255	0.5	1.3	1.8
2256	0.7	1.7	2.4
2257	0.9	2.2	3.1
2258	1.1	2.6	3.7
2259	1.4	3.1	4.5
2260	1.6	3.5	5.1
2261	1.9	4.2	6.1
2262	2.2	4.8	7.0
2263	2.6	5.5	8.1
2264	2.9	6.2	9.1
2265	3.2	6.8	10.0
2266	3.7	7.7	11.4
2267	4.2	8.6	12.8
2268	4.7	9.5	14.2
2269	5.2	10.5	15.7
2270	5.7	11.4	17.1
2271	6.4	12.4	18.8
2272	7.0	13.5	20.5
2273	7.7	14.6	22.3
2274	8.4	15.7	24.1
2275	9.0	16.8	25.8
2276	9.8	18.0	27.8
2277	10.6	19.3	29.9
2278	11.4	20.6	32.0
2279	12.2	21.9	34.1
2280	13.0	23.2	36.2
2281	----*	----*	37.9
2282	----*	----*	39.4
2283	----*	----*	41.0
2284	----*	----*	42.6
2285	----*	----*	44.2
2286	----*	----*	45.9
2287	----*	----*	47.5
2288	----*	----*	49.3
2289	----*	----*	51.0
2290	----*	----*	52.7
2291	----*	----*	54.0
2292	----*	----*	55.7
2293	----*	----*	57.8
2293.04	----*	----*	57.9

*At elevation 2281 feet and above, the North and South bays are combined into a single pool.

1. Based on area table contained in Design Memorandum -- Tropicana Detention Basin and Outlet Channel -- July 1996. One-foot incremental area values linearly interpolated from irregular incremental metric area values.

Table I-3a
Tropicana Detention Basin Area Table¹
(Metric Unit Version)

Elevation (Meters)	Area - North Bay (Square meters)	Area - South Bay (Square Meters)	Total Area Square meters
686.29	0	0	0
686.50	380	1040	1420
687.00	1283	3516	4799
687.33	1880	5150	7030
687.50	2382	6151	8533
688.00	3859	9096	12955
688.50	5336	12040	17376
688.86	6400	14160	20560
689.00	7012	15402	22413
689.50	9196	19836	29032
690.00	11380	24270	35650
690.38	13040	27640	40680
690.50	13833	29082	42915
691.00	17139	35088	52228
691.50	20445	41095	61540
692.00	23974	47338	71312
692.50	28392	54527	82919
693.00	32810	61717	94527
693.43	36610	67900	104510
693.50	37354	69086	106440
694.00	42669	77557	120227
694.50	47985	86029	134013
695.00	53300	94500	147800
695.50	----*	----*	158259
696.00	----*	----*	168719
696.48	----*	----*	178760
696.50	----*	----*	179216
697.00	----*	----*	190624
697.50	----*	----*	202032
698.00	----*	----*	213440
698.31	----*	----*	218570
698.50	----*	----*	222927
698.61	----*	----*	225450
698.92	----*	----*	234190

*Above elevation 695.00 meters, the North and South bays are combined into a single pool.

1. Based on area table contained in Design Memorandum -- Tropicana Detention Basin and Outlet Channel -- July 1996. One-half meter incremental area values linearly interpolated from irregular incremental area values.

2. Bold numbers are actual elevations and areas obtained from Design Memorandum -- Tropicana Detention Basin and Outlet Channel -- July 1996.

Table I-4
Tropicana Detention Basin Storage Table¹

Elevation (Feet, NAVD88)	Storage - North Bay (Acre-Feet)	Storage - South Bay (Acre-Feet)	Total Storage (Acre-Feet)
2251.60	0	0	0
2252	0.1	0.2	0.3
2253	0.5	0.7	1.2
2254	0.8	1.1	1.9
2255	1.2	1.6	2.8
2256	2.2	4.0	6.2
2257	3.2	6.4	9.6
2258	4.2	8.7	12.9
2259	5.2	11.1	16.3
2260	6.3	13.5	19.8
2261	7.8	18.6	26.4
2262	9.4	23.8	33.2
2263	11.0	29.0	40.0
2264	12.6	34.2	46.8
2265	14.2	39.3	53.5
2266	18.7	48.5	67.2
2267	23.1	57.6	80.7
2268	27.6	66.7	94.3
2269	32.1	75.8	107.9
2270	36.6	85.0	121.6
2271	44.0	99.0	143.0
2272	51.3	113.0	164.3
2273	58.7	127.0	185.7
2274	66.0	141.0	207.0
2275	73.4	155.0	228.4
2276	85.1	174.9	260.0
2277	96.8	194.8	291.6
2278	108.5	214.7	323.2
2279	120.2	234.6	354.8
2280	131.9	254.5	386.4
2281	----*	----*	423.7
2282	----*	----*	462.0
2283	----*	----*	501.1
2284	----*	----*	541.6
2285	----*	----*	582.0
2286	----*	----*	630.5
2287	----*	----*	679.0
2288	----*	----*	727.5
2289	----*	----*	776.0
2290	----*	----*	824.5
2291	----*	----*	875.6
2292	----*	----*	930.7
2293	----*	----*	986.5
2293.04	----*	----*	987.4

*At elevation 2281 feet and above, the North and South bays are combined into a single pool.

1. Based on storage table contained in Design Memorandum -- Tropicana Detention Basin and Outlet Channel -- July 1996. One-foot increment storage values linearly interpolated from irregular metric storage values.

Table I-4a
Tropicana Detention Basin Storage Table¹
(Metric Unit Version)

Elevation (Meters, NAVD88)	Storage - North Bay (Cubic meters)	Storage - South Bay (Cubic Meters)	Total Storage (Cubic Meters)
686.29	0	0	0
686.50	289	396	685
686.60	427	585	1011
687.00	977	1339	2316
687.33	1431	1961	3392
687.50	2133	3596	5729
688.00	4196	8407	12603
688.50	6260	13217	19477
688.86	7746	16680	24426
689.00	8644	19614	28258
689.50	11853	30091	41943
690.00	15062	40568	55629
690.38	17500	48530	66030
690.50	19674	52957	72631
691.00	28733	71401	100134
691.50	37793	89845	127637
692.00	48013	110267	158280
692.50	62879	138600	201479
693.00	77745	166933	244679
693.43	90530	191300	281830
693.50	93850	196936	290786
694.00	117567	237190	354757
694.50	141283	277445	418729
695.00	165000	317700	482700
695.50	----*	----*	560233
695.75	----*	----*	599000
696.00	----*	----*	639925
696.48	----*	----*	718500
696.50	----*	----*	722428
697.00	----*	----*	820618
697.50	----*	----*	918809
698.00	----*	----*	1017000
698.31	----*	----*	1081000
698.61	----*	----*	1148000
698.92	----*	----*	1218000

*Above elevation 695.00 meters, the North and South bays are combined into a single pool.

1. Based on storage table contained in Design Memorandum -- Tropicana Detention Basin and Outlet Channel -- July 1996. One-half meter incremental storage values linearly interpolated from irregular incremental storage values.

2. Bold numbers are actual elevations and storages obtained from Design Memorandum -- Tropicana Detention Basin and Outlet Channel -- July 1996.

Table I-5
Tropicana Detention Basin
Outlet Works Discharge Table

Elevation (Feet, NAVD88)	Discharge (cfs)	Elevation (Feet, NAVD88)	Discharge (cfs)	Elevation (Feet, NAVD88)	Discharge (cfs)
2251.6	0	2267	308	2283	450
2252	1	2268	315	2284	457
2253	5	2269	326	2285	465
2254	11	2270	336	2286	472
2255	19	2271	346	2287	479
2256	28	2272	356	2288	487
2257	153	2273	365	2289	494
2258	174	2274	375	2290*	500
2259	193	2275	384	2291*	507
2260	210	2276	393	2292*	514
2261	226	2277	401	2293*	521
2262	241	2278	410		
2263	255	2279	418		
2264	268	2280	426		
2265	280	2281	434		
2266	292	2282	442		

*Refer to table I-6 for total discharge.

Table I-6
Tropicana Detention Basin
Outlet Works and Emergency Spillway Discharge Table

Elevation (Feet, NAVD88)	Outlet Works Discharge (cfs)	Spillway Discharge (cfs)	Total Discharge (cfs)
2290	500	0	500
2291	507	7768	8275
2292	514	22726	23240
2293	521	43149	43670

Table I-5a
Tropicana Detention Basin
Outlet Works Discharge Table
(Metric Unit Version)

Elevation (Meters, NAVD88)	Discharge (cms)	Elevation (Meters, NAVD88)	Discharge (cms)	Elevation (Meters, NAVD88)	Discharge (cms)
686.30	0.00	690.50	8.07	695.75	12.62
686.50	0.03	691.00	8.61	696.00	12.83
687.00	0.24	691.50	9.12	696.47	13.16
687.33	0.47	691.90	9.52	696.50	13.18
687.50	0.62	692.00	9.60	697.00	13.51
687.60	0.72	692.50	10.07	697.50	13.84
688.00	1.20	693.00	10.50	698.00*	14.17
688.50	5.38	693.42	10.87	698.30*	14.36
688.85	5.96	693.50	10.92	698.50*	14.48
689.00	6.16	694.00	11.33	698.60*	14.55
689.50	6.86	694.50	11.72	698.91*	14.74
690.00	7.49	695.00	12.11	699.00*	14.79
690.37	7.94	695.50	12.47		

*Refer to table I-6a for total discharge.

Table I-6a
Tropicana Detention Basin
Outlet Works and Emergency Spillway Discharge Table
(Metric Unit Version)

Elevation (Meters, NAVD88)	Outlet Works Discharge (cms)	Spillway Discharge (cms)	Total Discharge (cms)
698.00	14.17	0.000	14.17
698.30	14.36	220.000	234.36
698.50	14.48	481.982	496.47
698.60	14.55	643.600	658.15
698.91	14.74	1222.000	1236.74
699.00	14.79	1261.000	1275.79

Bold numbers in the above tables are actual elevations and discharges obtained from Design Memorandum -- Tropicana Detention Basin and Outlet Channel -- July 1996.