



Photo No. 2-01. Pipeline Crossing over Dam Embankment.



Photo 2-02. Upstream Face of the Tat Momolikot Dam Embankment (looking west from the overlook area).



Photo 2-03. Tat Momolikot Cemetery and Dike
(beyond the white crosses).



Photo 2-04. Tat Momolikot Village Dike
(looking north along the east village dike).

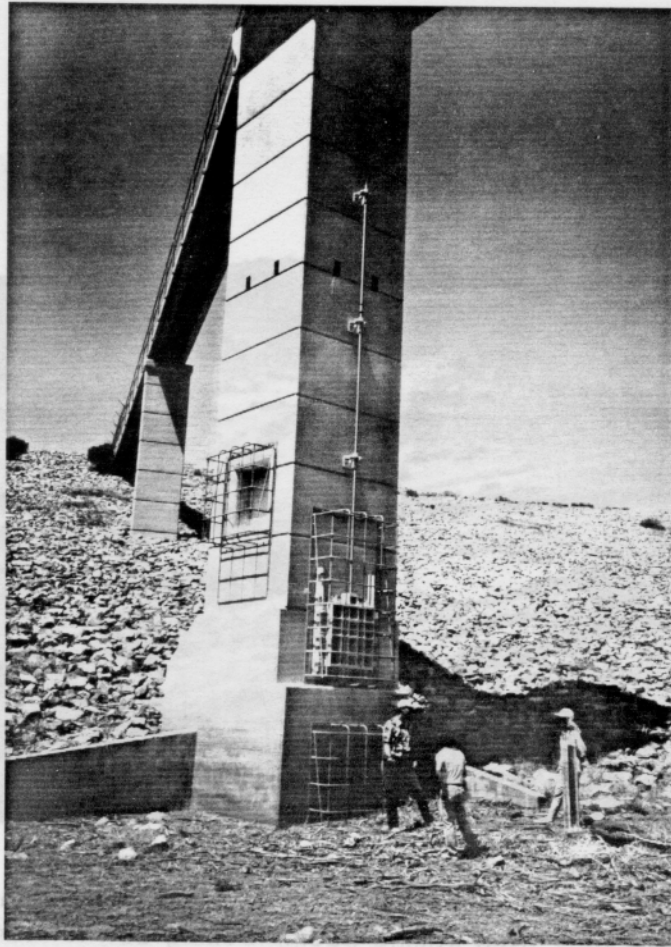


Photo 2-05. Conservation Outlet Works Intake Tower (view from upstream, within reservoir).

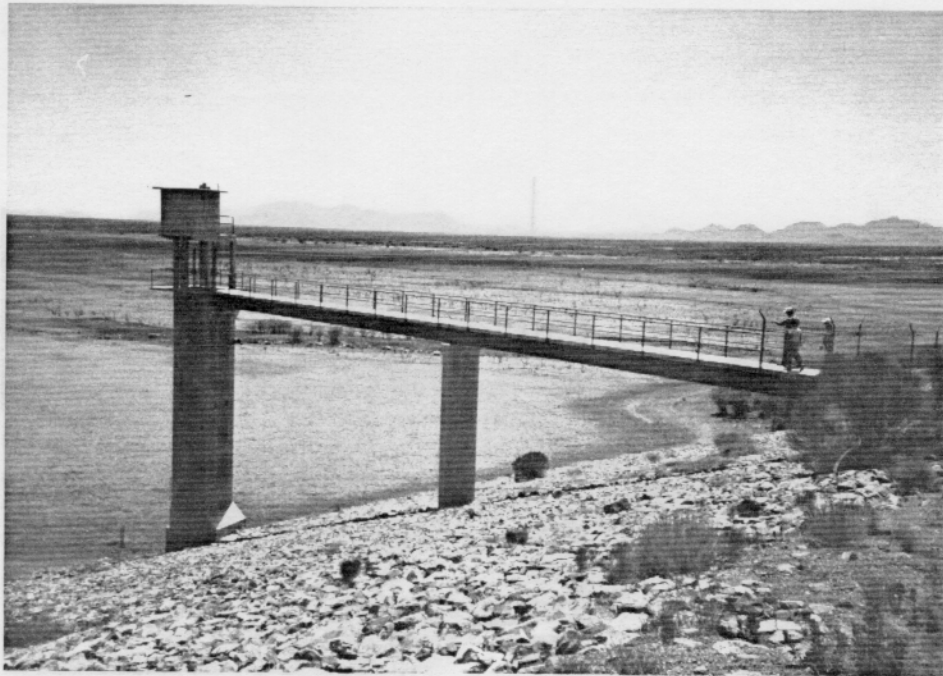


Photo 2-06. Conservation Outlet Works Intake Tower and Access Bridge (looking southwest from the main dam embankment).



Photo 2-07. Conservation Outlet Works Outlet Channel, Stilling Basin (foreground center), and Vaiva Vo Irrigation Project Canal (left from stilling basin; looking downstream from the main dam embankment).



Photo 2-08. Conservation Outlet Works Stilling Basin and Vaiva Vo Irrigation Project Canal (background left; looking northwest from the road).



Photo 2-09. Conservation Outlet Works Radial Gate at the Downstream End of the Stilling Basin (view from outlet channel, looking upstream).



Photo 2-10. Flood Control Outlet Works Approach Channel (view from spillway embankment, looking upstream).

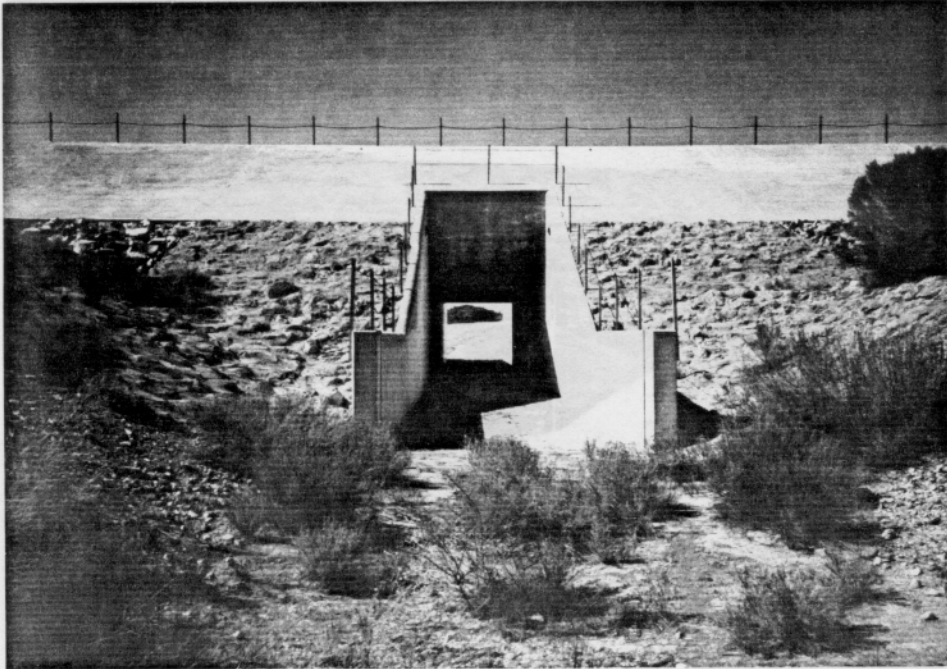


Photo 2-11. Flood Control Outlet Works Conduit
(view from approach channel, looking downstream).

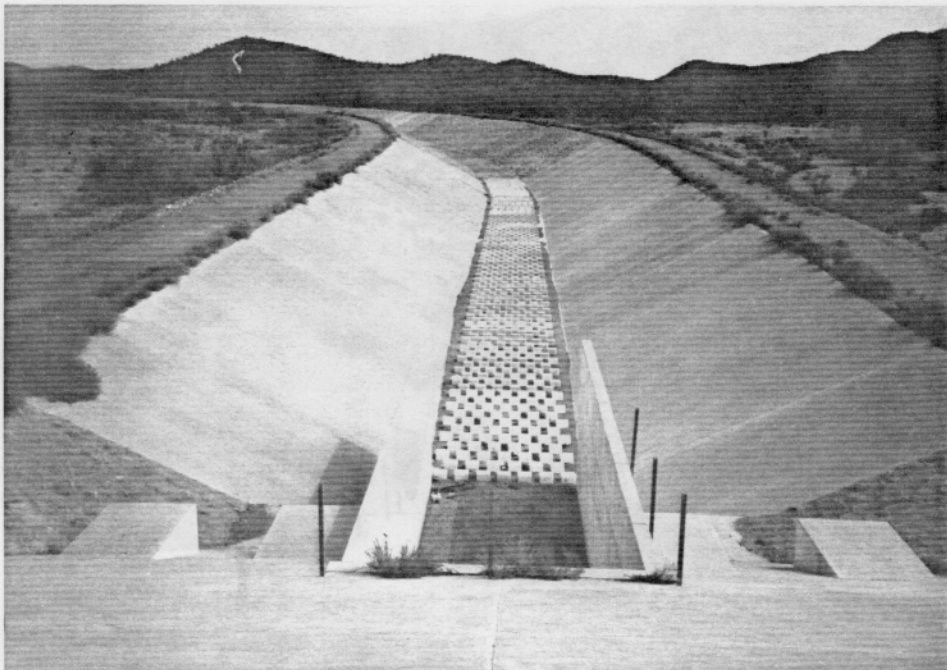


Photo 2-12. Flood Control Outlet Works Outlet Channel
(view from spillway embankment, looking downstream).

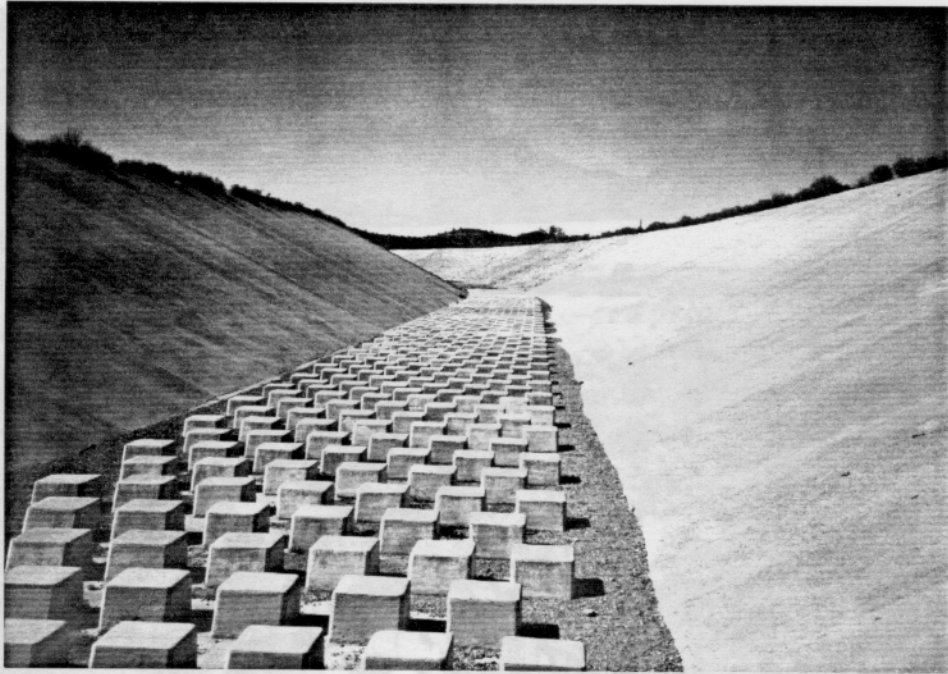


Photo 2-13. Flood Control Outlet Works Outlet Channel
(looking downstream at baffle blocks from within channel).



Photo 2-14. Flood Control Outlet Works Outlet Channel
at the Downstream End of the Single Unlined West Levee
(looking northwest toward Santa Rosa Wash).

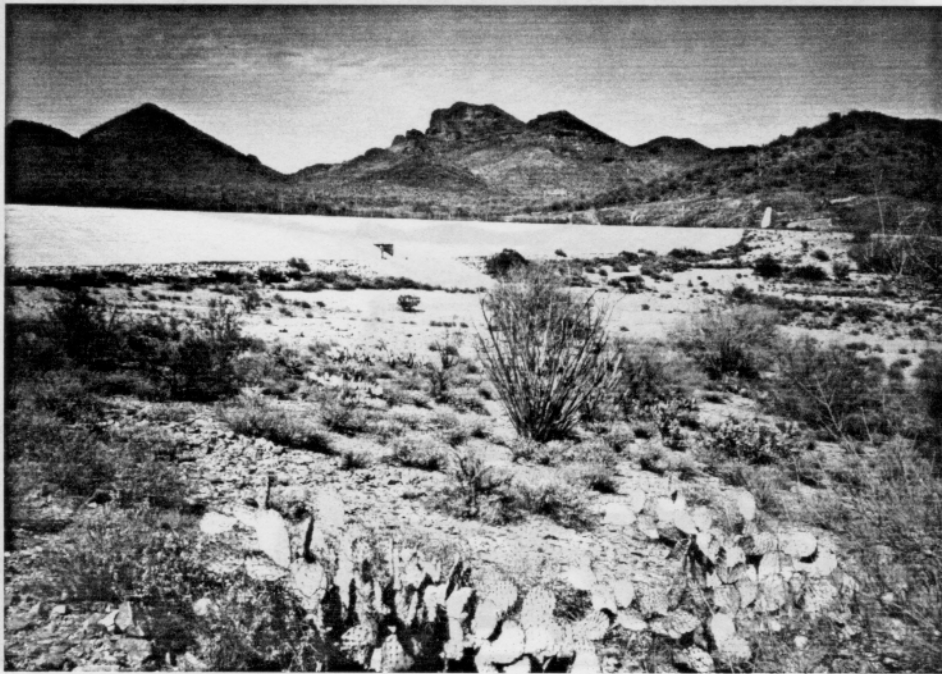


Photo 2-15. Upstream Slope of Spillway (view toward northeast).



Photo 2-16. Water being pumped into an irrigation canal from a well on the Tonoho O'odham Farm.