

**SAN ANTONIO DAM**  
**SAN ANTONIO CREEK, CALIFORNIA**

---

**SAN ANTONIO DAM**  
**LOCATION/VICINITY MAP**

---

**U.S. ARMY CORPS OF ENGINEERS**  
**LOS ANGELES DISTRICT**

**The document you are attempting to access is not currently available.**

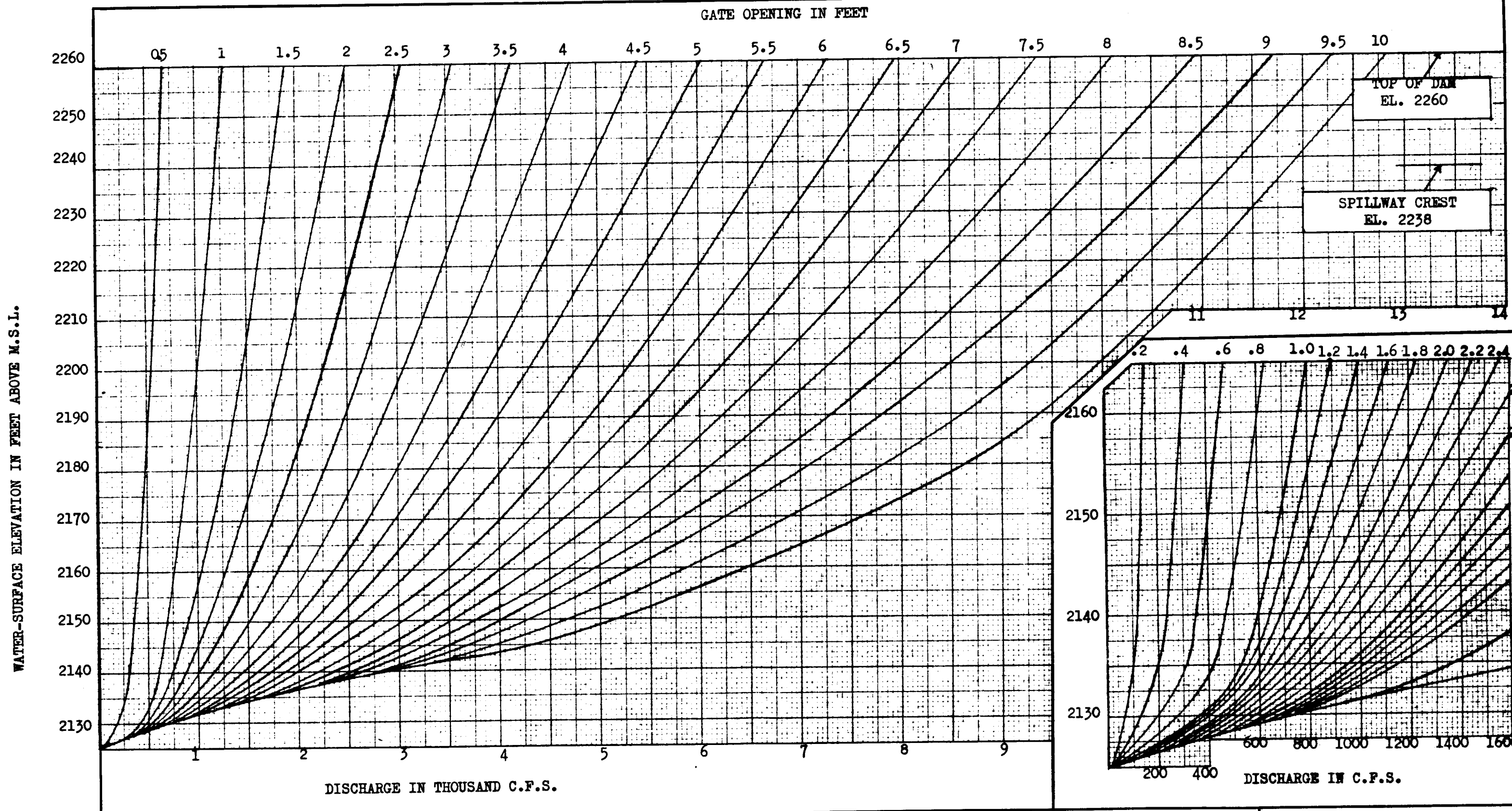
For additional information, please contact the Los Angeles District Public Affairs Office at (213) 452-3908.

**The document you are attempting to access is not currently available.**

For additional information, please contact the Los Angeles District Public Affairs Office at (213) 452-3908.

**The document you are attempting to access is not currently available.**

For additional information, please contact the Los Angeles District Public Affairs Office at (213) 452-3908.



Note: Above curves are based on the model study.  
 NOTE: Settings are for discharges with all three gates at same setting.

SAN ANTONIO DAM  
 SAN ANTONIO CREEK, CALIFORNIA

---

OUTLET DISCHARGE CURVES

---

U.S. ARMY CORPS OF ENGINEERS  
 LOS ANGELES DISTRICT

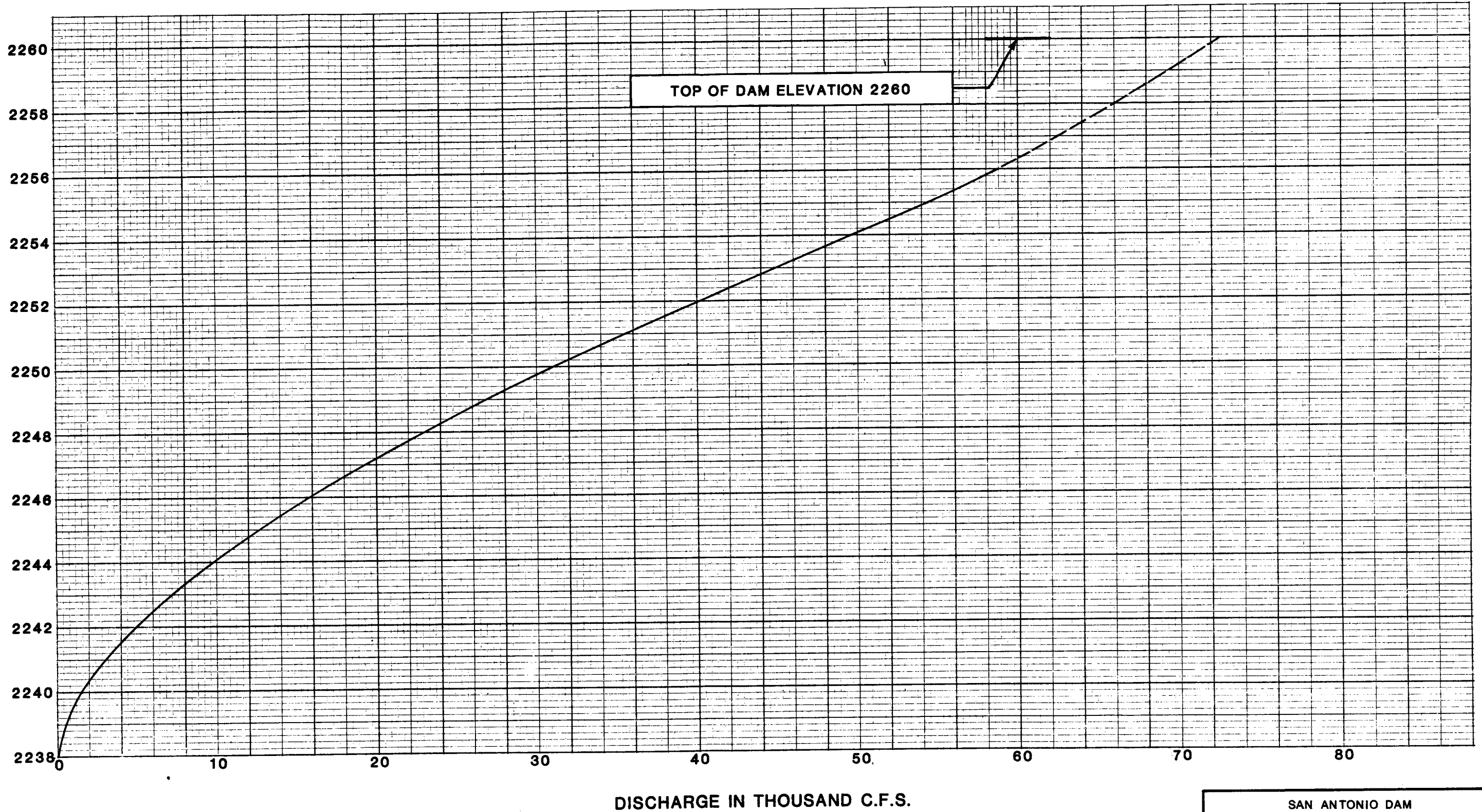
**The document you are attempting to access is not currently available.**

For additional information, please contact the Los Angeles District Public Affairs Office at (213) 452-3908.

**The document you are attempting to access is not currently available.**

For additional information, please contact the Los Angeles District Public Affairs Office at (213) 452-3908.

WATER SURFACE ELEVATION IN FEET ABOVE MEAN SEA LEVEL



**NOTE:**

CURVE BASED ON 1:36 SCALE MODEL STUDY

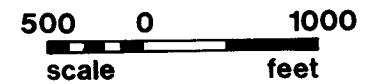
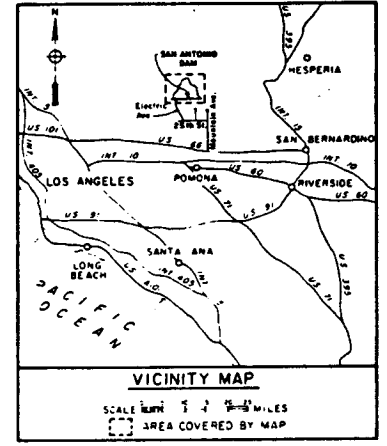
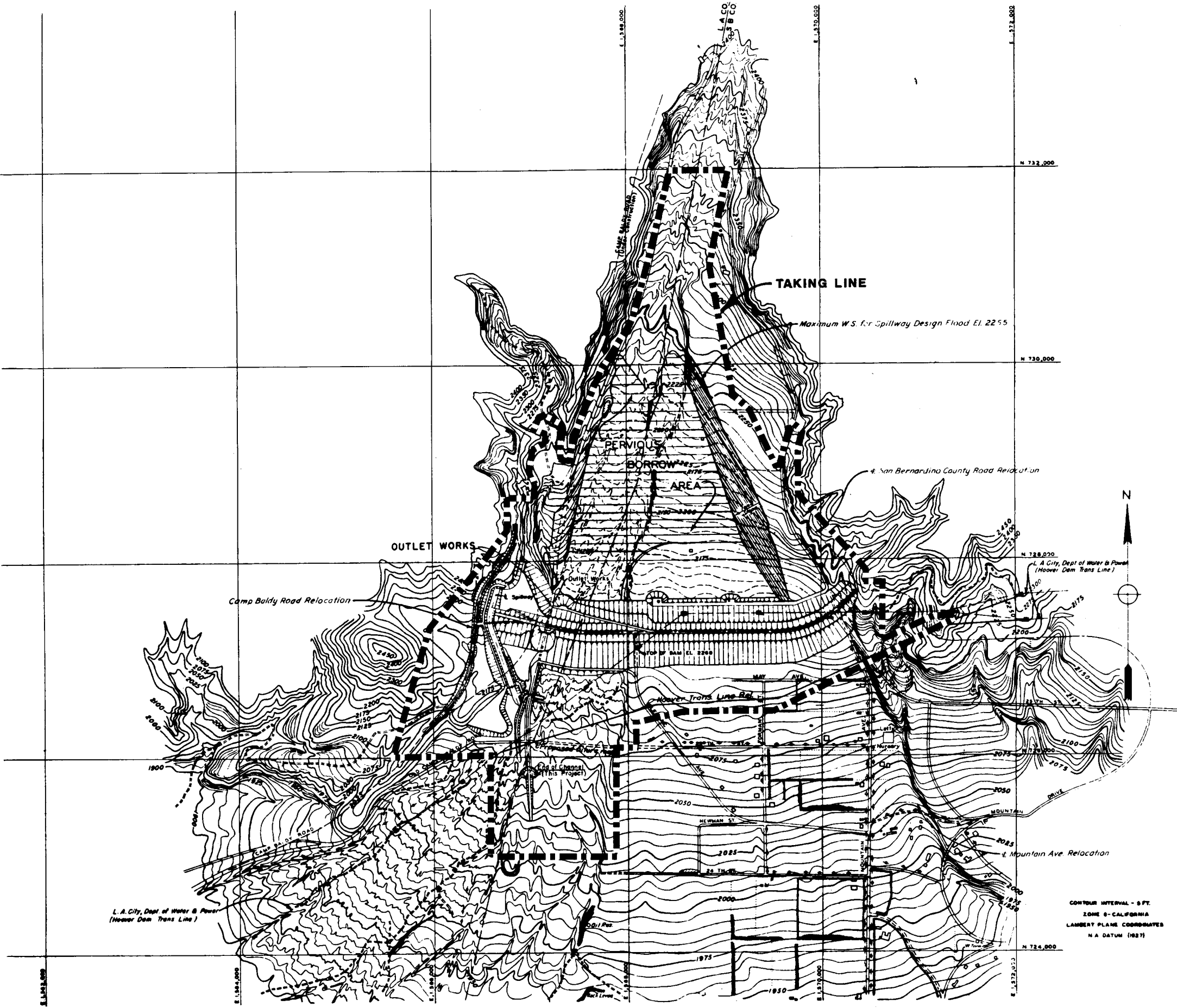
SPILLWAY LENGTH = 200 FEET

SAN ANTONIO DAM  
SAN ANTONIO CREEK, CALIFORNIA

**SPILLWAY DISCHARGE CURVE**

U.S. ARMY CORPS OF ENGINEERS  
LOS ANGELES DISTRICT





REV. 1 OCT. 58  
 DATUM IS MEAN SEA LEVEL

SAN ANTONIO DAM  
 SAN ANTONIO CREEK, CALIFORNIA

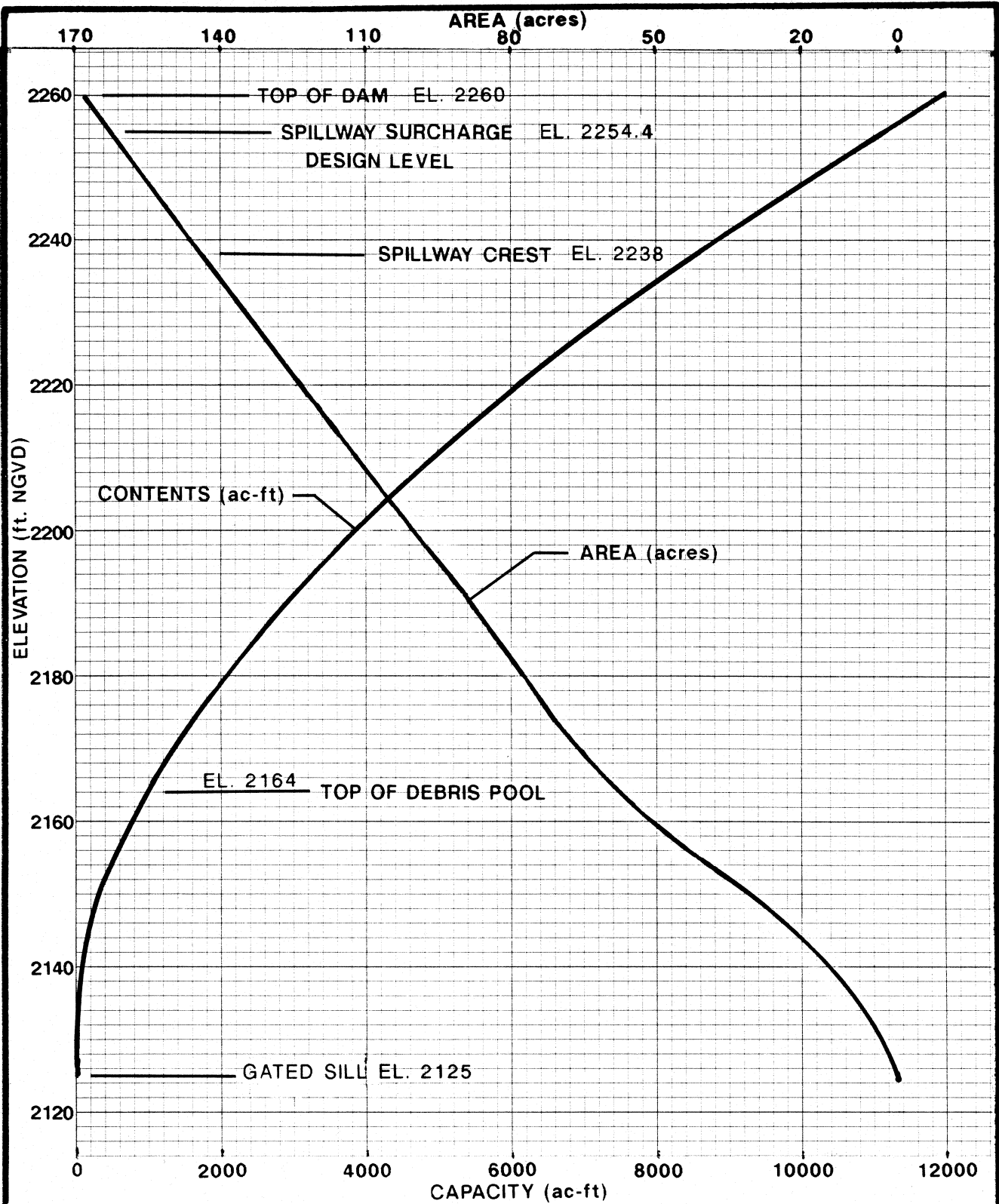
---

RESERVOIR AND EMBANKMENT  
 REAL ESTATE ACQUISITION BOUNDARY

---

U.S. ARMY CORPS OF ENGINEERS  
 LOS ANGELES DISTRICT

CONTOUR INTERVAL - 5 FT.  
 ZONE 8 - CALIFORNIA  
 LAMBERT PLANE COORDINATES  
 N A DATUM (1927)



SAN ANTONIO DAM  
 SAN ANTONIO CREEK, CALIFORNIA

**SAN ANTONIO DAM**  
 ELEVATION-AREA-CAPACITY  
 CURVES  
 SURVEY OF 21 FEBRUARY 1990

U.S. ARMY CORPS OF ENGINEERS  
 LOS ANGELES DISTRICT

SOURCE:  
 LAD RESERVOIR REGULATION





**The document you are attempting to access is not currently available.**

For additional information, please contact the Los Angeles District Public Affairs Office at (213) 452-3908.