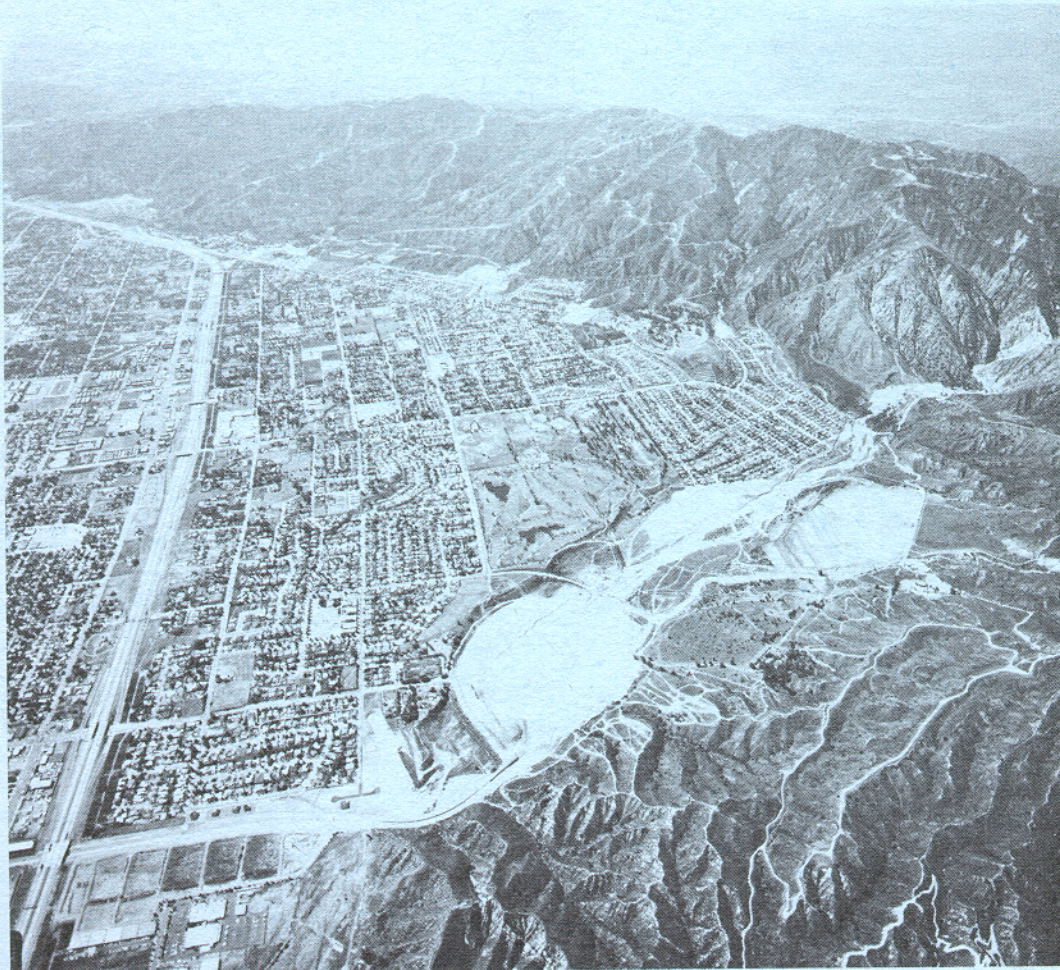


**US Army Corps
of Engineers**
Los Angeles District

WATER CONTROL MANUAL

**LOPEZ DAM
PACOIMA WASH
California**



JANUARY 1986

LOPEZ DAM AND RESERVOIR
 PACOIMA WASH, CALIFORNIA

PERTINENT DATA
 January 1986

Construction completion date.....	1 DEC 1954
Stream system.....	Pacoima Wash
Drainage area.....sq. miles...	34
Reservoir:	
Elevation	
Streambed at dam.....ft., NGVD...	1,253.72
Flood control pool (spillway crest).....ft., NGVD...	1,272.92
Spillway design surcharge level.....ft., NGVD...	1,292.80
Top of dam.....ft., NGVD...	1,298.92
Area	
Spillway crest.....acres...	40.4
Spillway design surcharge level.....acres...	69.9
Top of dam.....acres...	80.8
Capacity, gross	
Spillway cressst.....acre-feet...	441 (0.24*)
Spillway design surcharge level.....acre-feet...	1,566.2 (0.86*)
Top of dam.....acre-feet...	2,027.9 (1.12*)
Allowance for sediment (50-year).....acre-feet...	794 (0.44*)
Dam:	
Type.....	Earthfill
Height above original streambed.....ft...	50
Top length.....ft...	1,330
Top width.....ft...	20
Freeboard.....ft...	6.1
Slope, upstream and downstream face.....	1:2
Slope protection.....	Loose Rock
Spillway:	
Type.....	Broad-crested
Crest length.....ft...	110
Design surcharge.....ft...	19.9
Design discharge.....c.f.s...	31,000
Outlets:	
Number and size-diameter.....ft...	1-5' diameter
Length.....ft...	428
Entrance invert elevation.....ft., NGVD...	1,253.92
Standard project flood:	
Duration (inflow).....days...	3
Total volume.....acre-feet...	14,100 (7.78*)
Inflow peak.....c.f.s...	11,200
Outflow peak.....c.f.s...	11,200
Probable maximum flood:	
Duration (inflow).....days...	1
Total volume.....acre-feet...	19,900 (10.97*)
Inflow peak.....c.f.s...	30,400
Outflow peak.....c.f.s...	30,200
Historic maximums:	
Maximum inflow (mean hourly).....c.f.s...	12,940
Date.....	2-10-78
Maximum release.....c.f.s...	13,000
Date.....	2-10-78
Maximum water surface elevation.....ft., NGVD...	1,277.7
Date.....	2-10-78
Maximum storage.....acre-feet...	686
Date.....	2-10-78

* inches of runoff



REPLY TO
ATTENTION OF:

DEPARTMENT OF THE ARMY
SOUTH PACIFIC DIVISION, CORPS OF ENGINEERS
630 Sansome Street, Room 720
San Francisco, California 94111-2206

CESPD-ED-W (1110-2-240b)

MAR 20 1951

MEMORANDUM FOR ~~Commander~~, Los Angeles District
Commander, Sacramento District

SUBJECT: Planned Deviations from Approved Water Control Plans

1. All planned deviations from approved water control plans for reservoir projects within the South Pacific Division must be coordinated with the Coastal Engineering and Water Management Division at CESPD. Approval must be given prior to implementation of the deviation.
2. Emergency deviations do not require prior approval but coordination must still be made as soon as is practical.

A handwritten signature in black ink, appearing to read "Roger E. Yankospe".

ROGER E. YANKOSPE
Brigadier General, U.S. Army
Commanding