

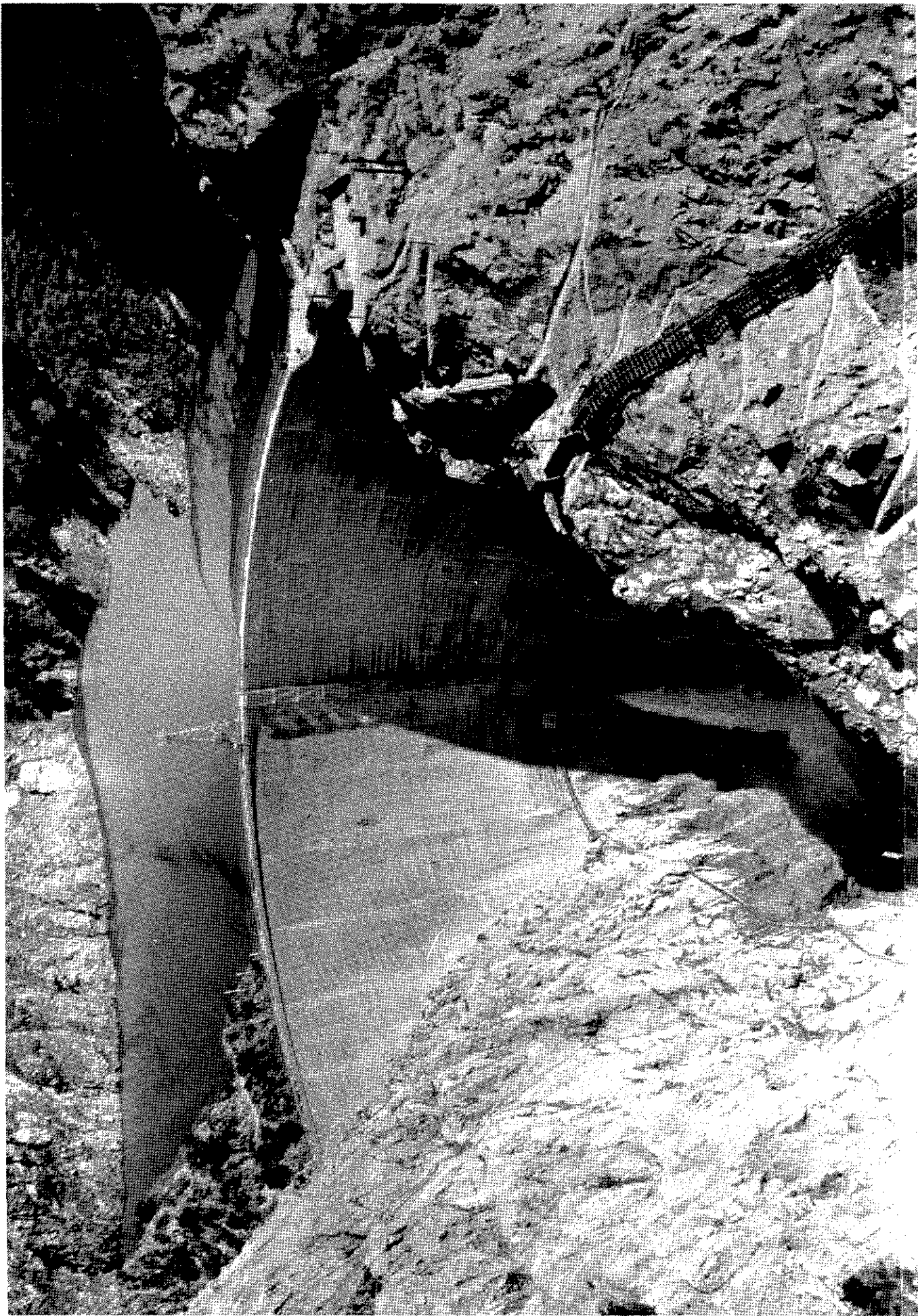
WATER CONTROL MANUAL
LOPEZ DAM

EXHIBIT A
PERTINENT DATA
PACOIMA DAM AND RESERVOIR

EXHIBIT A

PERTINENT DATA
PACOIMA DAM AND RESERVOIR

Item	Contents	Page
1	Photograph of Pacoima Dam	A-1
2	Pertinent Data Sheet	A-2
3	Photograph of Pacoima Outlet Works	A-3
4	Pacoima Dam Cross Section	A-4
5	Emergency Telephone List	A-5
6	Pacoima Dam and Reservoir Operation Plan	A-6
7	Reservoir Elevation-Storage Table	A-8
8	Reservoir Elevation-Area Table	A-16
9	Valve No. 2 Rating Table	A-22
10	Valve No. 3 Rating Table	A-25
11	Valve No. 4 Rating Table	A-28
12	Valve No. A2 Discharge Curve	A-31
13	Spillway Discharge Curve	A-32
14	Pacoima Creek Flume Below Pacoima Dam Rating Table	A-33



PACOIMA DAM

PACOIMA DAM
LOS ANGELES COUNTY FLOOD CONTROL DISTRICT

PERTINENT DATA SHEET

GENERAL

NAME - PACOIMA DAM	BOND ISSUE - 1924
LOCATION - PACOIMA CANYON 4 MILES N.E. OF SAN FERNANDO	DRAINAGE AREA - 28.2 SQ. MI. FROM ELEV. 1950 TO
STREAM - PACOIMA CREEK	ELEV. 6503 ABOVE MEAN SEA LEVEL
PURPOSE - FLOOD CONTROL AND CONSERVATION	
TYPE - CONCRETE, CONSTANT ANGLE ARCH GRAVITY ABUTMENTS	

CONSTRUCTION:

BEGAN - MARCH 1925	CONSTRUCTED BY - BENT BROS.
COMPLETED - FEBRUARY 1929	DESIGNER - CONSTANT ANGLE ARCH CO.
COST \$2,466,738.28	RESIDENT ENGINEER - K.J. HARRISON
COST PER A.F. F.C. 206.85	COMPUTATIONS - B.F. JAKOBSEN
COST PER A.F. CONSERV. 407.09	K.J. HARRISON
COST BASED ON ORIGINAL CAPACITIES	

DIMENSIONS:

CREST HT. ABOVE ORIGINAL STREAMBED 365.0 FT.	TOTAL VOLUME OF EXCAVATION 105,927 C.Y.
CREST HT. ABOVE FOUNDATION 372.0 FT.	TOTAL VOLUME ON CONCRETE 226,140 C.Y.
CREST LENGTH 640.0 FT.	CHARACTER OF FOUNDATION - GRANITE
CREST WIDTH 10.4 FT.	
HEIGHT OF PARAPET WALL 0.75 FT.	
BASE THICKNESS 100.0 FT.	

OUTLETS:

NO.	TYPE	SIZE	RISER OR INLET SILL ELEV.	OUTLET ELEV	MAX. DISCH. AT SPILLWAY ELEV. CFS	
<u>FLOOD OPERATION VALUES</u>						
(2)	2	HOLLOW JET	30"	1850.2	1700.0	350
	2A	GATE VALVE	30"		1700.0	---
(3)	3	HOLLOW JET	30"	1850.0	1750.0	319
	3A	GATE VALVE	30"		1750.0	---
(3)	4	HOLLOW JET	30"	1850.5	1800.0	281
	4A	GATE VALVE	30"		1800.0	---
<u>SERVICE VALVES</u>						
	A1	GATE VALVE	18"	1669.7	1694.0	---
	A1A	GATE VALVE	8"	1669.7	1694.0	---
	A1B	GATE VALVE	8"	1669.7	1694.0	---
	A1C	GATE VALVE	18"	1669.7	1694.0	---
(4)	A2	HOLLOW JET	10"	1825.0	1703.0	33
(1)	S.G.	SLUICE GATE	5' x 5'	1739.9	1739.9	1712.0

SPILLWAY NO.	TYPE	SILL ELEV.	NO. 1 SPILLWAY ORIG. CAP. A.F.	MAX. DISCHARGE AT ASSUMED H.W.L. CFS
1	TUNNEL	1950.00	(6060.0)	10,780 (COMBINED)
2	TUNNEL	1989.95		

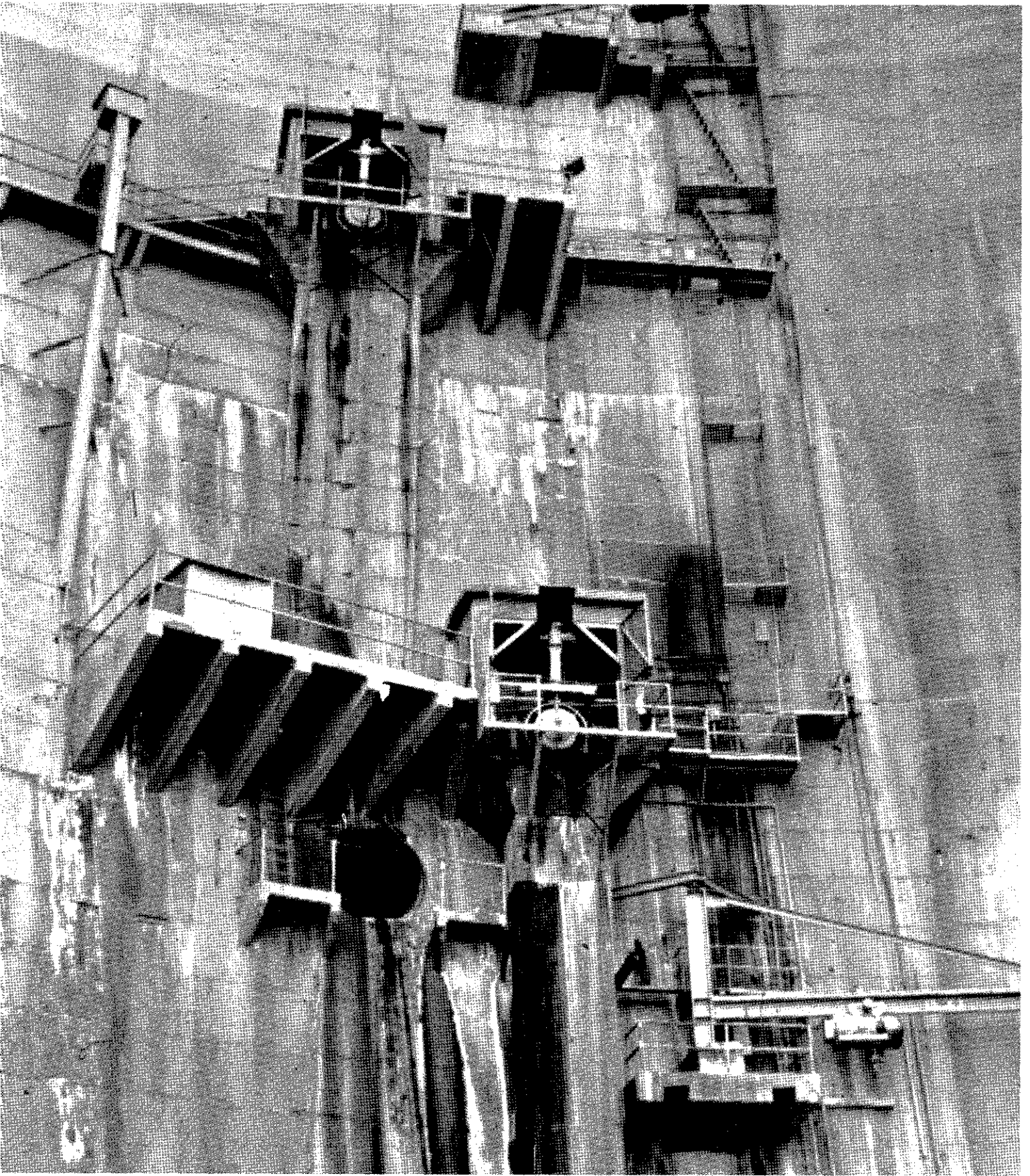
ELEVATIONS:

	<u>ELEV.</u>
ORIGINAL STREAMBED	1650.00
LOWEST EXCAVATION	1642.60
CREST	2015.00
TOP OF PARAPET	2015.75
ASSUMED H.W.L.	2025.00

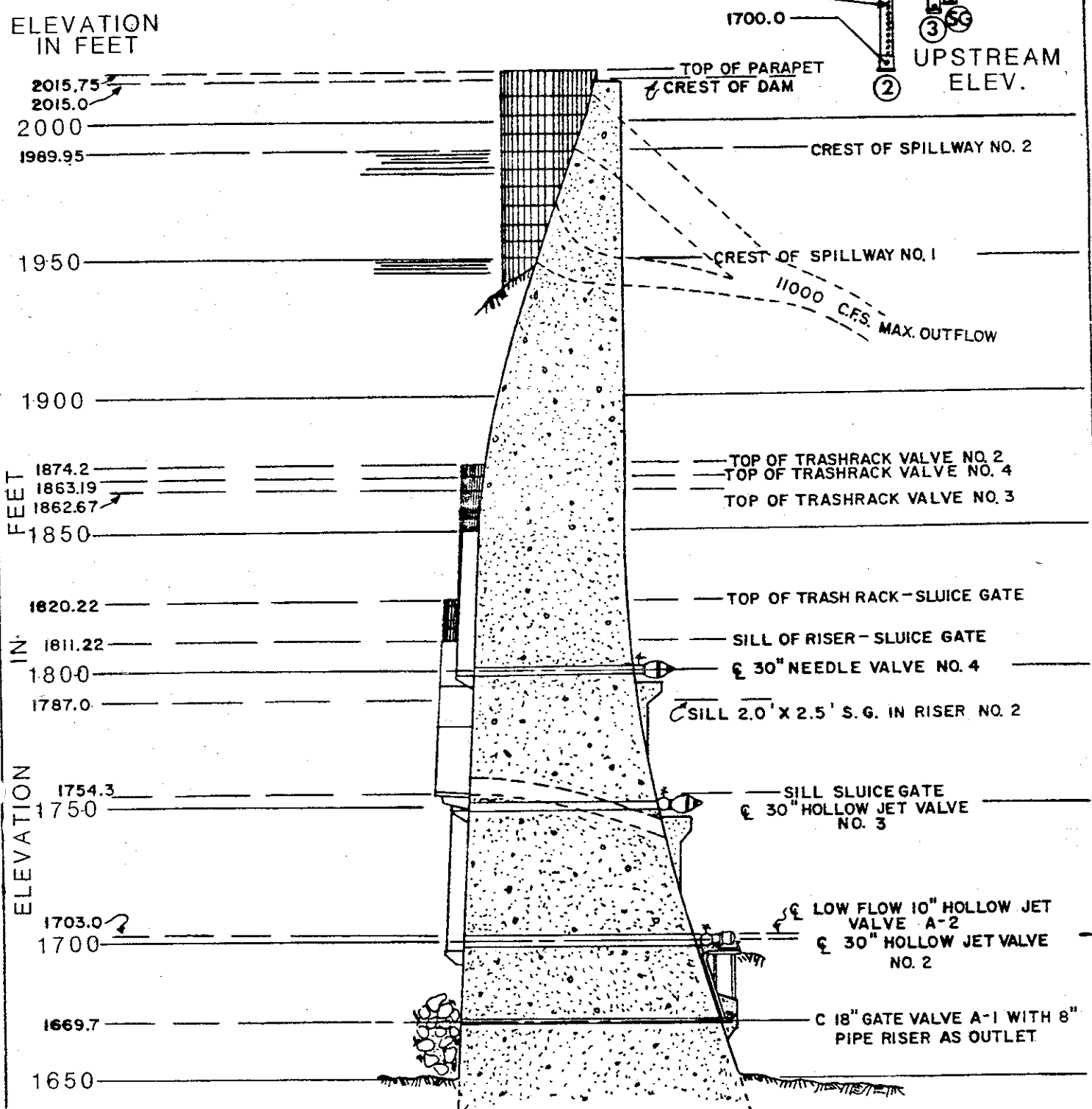
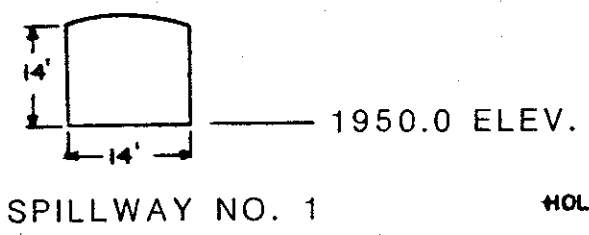
REMARKS:

- (1) CONSTRUCTED 1947. NEW TRASH RACK INSTALLED OCTOBER 1960. RISER INSTALLED NOVEMBER 1971. RISER REMOVED AUG. 1983.
- (2) RISER CONSTRUCTED DECEMBER 1947. MODIFIED IN 1964. EXTENDED IN OCTOBER 1969.
- (3) GUNITE RISERS CONSTRUCTED JANUARY 1939. RISER NO. 3 EXTENDED NOVEMBER 1971.
- (4) HOLLOW JET INSTALLED JANUARY 1956.
LATEST STATE APPROVAL JUNE 8, 1977. WATER MAY BE IMPOUNDED TO ELEVATION 1950 FEET.
1950.035 USGS = 1950.0 SPILLWAY DATUM. SPILLWAY DATUM SHOWN.

REVISED AUGUST 1984



PACOIMA DAM OUTLET WORKS



PACOIMA DAM CROSS SECTION

PACOIMA DAM

LOS ANGELES COUNTY DEPARTMENT OF PUBLIC WORKS

EMERGENCY TELEPHONE LIST

District Operations Center
(M-F, 8:00 am - 4:30 pm)

(213) 226-4191

District 24-Hour Number

(213) 226-4308

Department of Public Works

M E M O R A N D U M

TO: Mr. Orville E. McCollom

January 31, 1985

FROM: N. C. Datywler
Hydraulic Division

File No. 64.121
Pacoima Dam and Reservoir
Operation Plan

Recommendation

Approve the following operating plan for Pacoima Dam. It is recommended that this operating plan take effect upon completion of the current spillway tunnel extension project.

Background

Due to sluicing of Pacoima Reservoir in 1983 and the current spillway tunnel extension project, several new operating schemes for the dam and reservoir were studied. The proposed operating plan is outlined below.

Operating Plan -

Holding Pool

Minimum holding pool is Elevation 1880.0 feet.

Rising Reservoir

Storm inflow will be ponded to Elevation 1920.0 feet. Above 1920.0 feet, outflow will approximate inflow to maximum outlet capacity (874 cfs at Elevation 1920.0 feet).

Once spillway flow is achieved (Elevation 1950.0 feet), the valves will be closed in increments so that the combined outflow from the valves and spillway will produce a uniform outflow hydrograph. All valves will be closed above Elevation 1954.0 feet. At no time will the combination of total valve plus spillway outflow be greater than inflow to the reservoir.

Falling Reservoir

When possible, releases greater than inflow will be maintained until the reservoir water surface has receded to Elevation 1927.0 feet. At that time, outflow may be reduced to a conservable rate or inflow, whichever is greater. At the discretion of the operation engineer, reservoir outflow may be reduced to inflow at elevations greater than 1927.0 feet to increase water conservation benefits.

Water Conservation Pool

Nonstorm spreading releases greater than inflow should be initiated when Elevation 1927.0 feet is achieved.

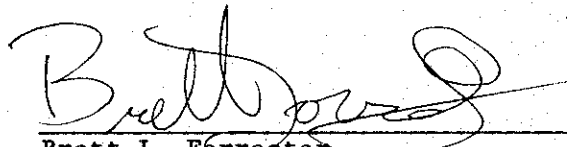
Discussion

The 10-, 25-, 50-year and capital event runoff frequency inflow hydrographs were routed through the dam with the goal of increasing water conservation benefits, preventing spillway flows for events with less than a 10-year frequency, and keeping the reservoir debris cone upstream a satisfactory distance. Alternate discharge schedules, which begin releases at lower elevations, do not significantly decrease the peak outflows for events greater than a 10-year frequency.

<u>Runoff Frequency</u>	<u>Resultant W.S. Proposed Plan</u>	<u>Maximum Release</u>
10	1950.4	969
25	1962.5	1761
50	1976.3	2230
Capital	2009.0	10,342

A 1,500 acre-foot water conservation pool is provided for between Elevation 1880.0 feet and 1927.0 feet. If need be, the reservoir can be drawn from 1927.0 feet to Elevation 1920.0 feet in approximately four hours using all valves with no inflow.

The Sedimentation Section of Hydraulic Division concurs with the elevation selected for minimum holding pool (Elevation 1880.0 feet) with regards to sedimentation. They expect no difficulties in valve operations due to sediment for at least several years with the absence of very large debris-producing storms.


Brett L. Forrester
Operations Section
Extension 4191

BLF:bmc

cc: Operation and Maintenance (2) (Noyes, Remillard)
Water Conservation
SP&DIG
Hydraulic (2) (Mitchell, Files)
General Files

PROGRAM F0611P
 PACOIMA
 RESERVOIR STORAGE TABULATION (ACRE-FEET)
 STORAGE TABLE NO. 23
 SURVEY OF 8- 4-83

G.H.	.0	.1	.2	.3	.4	.5	.6	.7	.8	.9	DIFF.
1748.	0.0	0.0	0.0	0.0	0.0	0.0	0.0	0.0	0.0	0.0	0.0
1749.	0.0	0.0	0.0	0.0	0.0	0.0	0.0	0.0	0.0	0.0	0.0
1750.	0.0	0.0	0.0	0.0	0.0	0.0	0.0	0.0	0.0	0.0	0.0
1751.	0.0	0.0	0.0	0.0	0.0	0.0	0.0	0.0	0.0	0.0	0.0
1752.	0.0	0.0	0.0	0.0	0.0	0.0	0.0	0.0	0.0	0.0	0.0
1753.	0.0	0.0	0.0	0.0	0.0	0.0	0.0	0.0	0.0	0.0	0.0
1754.	0.0	0.0	0.0	0.0	0.0	0.0	0.0	0.0	0.0	0.0	0.0
1755.	0.05	0.06	0.07	0.08	0.09	0.10	0.11	0.12	0.13	0.14	0.01
1756.	0.15	0.16	0.17	0.18	0.19	0.20	0.21	0.22	0.23	0.24	0.01
1757.	0.25	0.27	0.28	0.30	0.31	0.32	0.34	0.35	0.37	0.38	0.01
1758.	0.40	0.43	0.45	0.47	0.50	0.52	0.55	0.57	0.60	0.62	0.02
1759.	0.65	0.69	0.72	0.75	0.79	0.82	0.86	0.89	0.93	0.96	0.03
1760.	1.00	1.04	1.08	1.12	1.16	1.20	1.24	1.28	1.32	1.36	0.04
1761.	1.40	1.44	1.49	1.53	1.58	1.62	1.67	1.71	1.76	1.80	0.04
1762.	1.85	1.90	1.96	2.01	2.07	2.12	2.18	2.23	2.29	2.34	0.05
1763.	2.40	2.46	2.53	2.59	2.66	2.72	2.79	2.85	2.92	2.98	0.06
1764.	3.05	3.12	3.20	3.27	3.35	3.42	3.50	3.57	3.65	3.72	0.07
1765.	3.80	3.88	3.97	4.05	4.14	4.22	4.31	4.39	4.48	4.56	0.08
1766.	4.65	4.74	4.84	4.93	5.03	5.12	5.22	5.31	5.41	5.50	0.09
1767.	5.60	5.70	5.81	5.91	6.02	6.12	6.23	6.33	6.44	6.54	0.11
1768.	6.65	6.76	6.88	6.99	7.11	7.22	7.34	7.45	7.57	7.68	0.11
1769.	7.80	7.92	8.05	8.17	8.30	8.42	8.55	8.67	8.80	8.92	0.13
1770.	9.05	9.18	9.31	9.44	9.57	9.70	9.83	9.96	10.1	10.2	0.13
1771.	10.3	10.5	10.6	10.8	10.9	11.0	11.2	11.3	11.4	11.6	0.13
1772.	11.7	11.8	12.0	12.1	12.3	12.4	12.6	12.7	12.9	13.0	0.14
1773.	13.1	13.3	13.5	13.6	13.8	13.9	14.1	14.2	14.4	14.5	0.15
1774.	14.7	14.9	15.0	15.2	15.3	15.5	15.7	15.8	16.0	16.1	0.16
1775.	16.3	16.5	16.6	16.8	17.0	17.1	17.3	17.5	17.6	17.8	0.16
1776.	17.9	18.1	18.3	18.5	18.6	18.8	19.0	19.2	19.3	19.5	0.17
1777.	19.7	19.9	20.1	20.3	20.4	20.6	20.8	21.0	21.2	21.4	0.18
1778.	21.5	21.7	21.9	22.1	22.3	22.5	22.7	22.9	23.1	23.3	0.19

G.H.	.0	.1	.2	.3	.4	.5	.6	.7	.8	.9	DIFF.
1779.	23.5	23.7	23.9	24.1	24.3	24.5	24.7	24.9	25.1	25.3	0.20
1780.	25.5	25.8	26.0	26.2	26.4	26.6	26.8	27.1	27.3	27.5	0.21
1781.	27.7	27.9	28.1	28.4	28.6	28.8	29.0	29.3	29.5	29.7	0.22
1782.	29.9	30.2	30.4	30.7	30.9	31.1	31.4	31.6	31.8	32.1	0.23
1783.	32.3	32.5	32.8	33.0	33.3	33.5	33.7	34.0	34.2	34.5	0.24
1784.	34.7	34.9	35.2	35.4	35.7	35.9	36.2	36.4	36.7	36.9	0.24
1785.	37.1	37.4	37.7	37.9	38.2	38.4	38.7	38.9	39.2	39.4	0.25
1786.	39.7	40.0	40.2	40.5	40.8	41.0	41.3	41.6	41.8	42.1	0.26
1787.	42.3	42.6	42.9	43.2	43.4	43.7	44.0	44.2	44.5	44.8	0.27
1788.	45.0	45.3	45.6	45.9	46.1	46.4	46.7	47.0	47.2	47.5	0.27
1789.	47.8	48.1	48.4	48.7	48.9	49.2	49.5	49.8	50.1	50.4	0.28
1790.	50.6	50.9	51.2	51.5	51.8	52.1	52.4	52.7	53.0	53.3	0.29
1791.	53.6	53.9	54.2	54.5	54.8	55.1	55.5	55.8	56.1	56.4	0.31
1792.	56.7	57.0	57.3	57.7	58.0	58.3	58.6	59.0	59.3	59.6	0.32
1793.	59.9	60.3	60.6	61.0	61.3	61.6	62.0	62.3	62.6	63.0	0.33
1794.	63.3	63.6	64.0	64.3	64.7	65.0	65.4	65.7	66.1	66.4	0.35
1795.	66.8	67.2	67.5	67.9	68.3	68.6	69.0	69.4	69.7	70.1	0.36
1796.	70.4	70.8	71.2	71.6	71.9	72.3	72.7	73.1	73.4	73.8	0.38
1797.	74.2	74.6	75.0	75.4	75.7	76.1	76.5	76.9	77.3	77.7	0.38
1798.	78.0	78.4	78.8	79.2	79.6	80.0	80.4	80.8	81.2	81.6	0.40
1799.	82.0	82.5	82.9	83.3	83.7	84.1	84.5	85.0	85.4	85.8	0.41
1800.	86.2	86.6	87.0	87.5	87.9	88.3	88.7	89.2	89.6	90.0	0.42
1801.	90.4	90.9	91.3	91.8	92.2	92.6	93.1	93.5	93.9	94.4	0.43
1802.	94.8	95.2	95.7	96.1	96.6	97.0	97.5	97.9	98.4	98.8	0.44
1803.	99.2	99.7	100.2	100.6	101.1	101.5	102.0	102.4	102.9	103.3	0.45
1804.	103.8	104.3	104.7	105.2	105.7	106.1	106.6	107.1	107.5	108.0	0.46
1805.	108.4	108.9	109.4	109.9	110.4	110.8	111.3	111.8	112.3	112.8	0.48
1806.	113.2	113.7	114.2	114.7	115.2	115.7	116.2	116.7	117.2	117.7	0.49
1807.	118.2	118.7	119.2	119.7	120.2	120.7	121.2	121.7	122.2	122.7	0.50
1808.	123.2	123.8	124.3	124.8	125.3	125.8	126.3	126.9	127.4	127.9	0.51
1809.	128.4	128.9	129.5	130.0	130.5	131.0	131.6	132.1	132.6	133.2	0.53
1810.	133.7	134.2	134.8	135.3	135.9	136.4	137.0	137.5	138.1	138.6	0.54
1811.	139.1	139.7	140.3	140.8	141.4	141.9	142.5	143.1	143.6	144.2	0.56
1812.	144.7	145.3	145.9	146.5	147.0	147.6	148.2	148.8	149.3	149.9	0.57
1813.	150.5	151.1	151.7	152.3	152.9	153.4	154.0	154.6	155.2	155.8	0.59
1814.	156.4	157.0	157.6	158.2	158.8	159.4	160.0	160.6	161.2	161.8	0.60

G.H.	.0	.1	.2	.3	.4	.5	.6	.7	.8	.9	DIFF.
1815.	162.4	163.1	163.7	164.3	164.9	165.5	166.2	166.8	167.4	168.0	0.62
1816.	168.6	169.3	169.9	170.6	171.2	171.8	172.5	173.1	173.7	174.4	0.63
1817.	175.0	175.6	176.3	176.9	177.6	178.2	178.9	179.5	180.2	180.8	0.65
1818.	181.5	182.2	182.8	183.5	184.2	184.8	185.5	186.2	186.9	187.5	0.67
1819.	188.2	188.9	189.6	190.3	191.0	191.6	192.3	193.0	193.7	194.4	0.69
1820.	195.1	195.8	196.5	197.2	197.9	198.6	199.4	200.1	200.8	201.5	0.71
1821.	202.2	202.9	203.7	204.4	205.1	205.9	206.6	207.3	208.1	208.8	0.73
1822.	209.5	210.3	211.1	211.8	212.6	213.3	214.1	214.9	215.6	216.4	0.76
1823.	217.1	217.9	218.7	219.5	220.3	221.1	221.9	222.6	223.4	224.2	0.78
1824.	225.0	225.8	226.6	227.4	228.3	229.1	229.9	230.7	231.5	232.3	0.81
1825.	233.1	234.0	234.8	235.7	236.5	237.4	238.2	239.1	239.9	240.8	0.84
1826.	241.6	242.5	243.3	244.2	245.1	245.9	246.8	247.7	248.6	249.4	0.87
1827.	250.3	251.2	252.1	253.0	253.9	254.8	255.7	256.6	257.5	258.4	0.89
1828.	259.2	260.2	261.1	262.0	262.9	263.8	264.8	265.7	266.6	267.5	0.92
1829.	268.4	269.4	270.3	271.3	272.2	273.2	274.1	275.1	276.0	277.0	0.94
1830.	277.9	278.9	279.8	280.8	281.8	282.8	283.7	284.7	285.7	286.7	0.97
1831.	287.6	288.7	289.7	290.7	291.7	292.7	293.7	294.7	295.7	296.7	1.00
1832.	297.7	298.7	299.8	300.8	301.9	302.9	303.9	305.0	306.0	307.1	1.04
1833.	308.1	309.2	310.2	311.3	312.4	313.5	314.5	315.6	316.7	317.8	1.07
1834.	318.8	320.0	321.1	322.2	323.3	324.4	325.5	326.6	327.7	328.8	1.11
1835.	329.9	331.1	332.2	333.4	334.5	335.7	336.8	338.0	339.1	340.3	1.15
1836.	341.4	342.6	343.8	345.0	346.2	347.4	348.6	349.8	351.0	352.2	1.19
1837.	353.3	354.6	355.8	357.0	358.3	359.5	360.7	362.0	363.2	364.4	1.23
1838.	365.6	366.9	368.2	369.4	370.7	372.0	373.2	374.5	375.8	377.0	1.26
1839.	378.3	379.6	380.9	382.2	383.5	384.8	386.1	387.4	388.7	390.0	1.30
1840.	391.3	392.6	394.0	395.3	396.6	398.0	399.3	400.6	402.0	403.3	1.33
1841.	404.6	406.0	407.4	408.7	410.1	411.5	412.8	414.2	415.6	416.9	1.36
1842.	418.3	419.7	421.1	422.5	423.9	425.3	426.7	428.1	429.5	430.9	1.39
1843.	432.2	433.7	435.1	436.5	437.9	439.3	440.8	442.2	443.6	445.0	1.42
1844.	446.4	447.9	449.3	450.8	452.2	453.6	455.1	456.5	458.0	459.4	1.44
1845.	460.8	462.3	463.8	465.2	466.7	468.1	469.6	471.1	472.5	474.0	1.46
1846.	475.4	476.9	478.4	479.9	481.4	482.8	484.3	485.8	487.3	488.8	1.48
1847.	490.2	491.7	493.2	494.7	496.2	497.7	499.2	500.7	502.2	503.7	1.49
1848.	505.2	506.7	508.2	509.7	511.2	512.7	514.2	515.7	517.2	518.7	1.50
1849.	520.2	521.8	523.3	524.8	526.3	527.8	529.4	530.9	532.4	533.9	1.52
1850.	535.4	537.0	538.5	540.1	541.6	543.1	544.7	546.2	547.8	549.3	1.54

DIFF.

.9

.8

.7

.6

.5

.4

.3

.2

.1

.0

G.H.

1851.	550.8	552.4	554.C	555.5	557.1	558.6	560.2	561.8	563.3	564.9	1.56
1852.	566.4	568.0	569.6	571.2	572.8	574.3	575.9	577.5	579.1	580.7	1.58
1853.	582.2	583.8	585.4	587.0	588.6	590.2	591.8	593.4	595.0	596.6	1.60
1854.	598.2	599.9	601.5	603.1	604.7	606.3	608.0	609.6	611.2	612.8	1.62
1855.	614.4	616.1	617.7	619.4	621.0	622.6	624.3	625.9	627.6	629.2	1.64
1856.	630.8	632.5	634.2	635.8	637.5	639.1	640.8	642.5	644.1	645.8	1.66
1857.	647.4	649.1	650.8	652.5	654.2	655.8	657.5	659.2	660.9	662.6	1.68
1858.	664.2	665.9	667.6	669.3	671.0	672.7	674.4	676.1	677.8	679.5	1.69
1859.	681.2	682.9	684.6	686.3	688.0	689.7	691.5	693.2	694.9	696.6	1.71
1860.	698.3	700.0	701.8	703.5	705.2	706.9	708.7	710.4	712.1	713.9	1.73
1861.	715.6	717.3	719.1	720.8	722.6	724.3	726.1	727.8	729.6	731.3	1.75
1862.	733.1	734.9	736.6	738.4	740.2	741.9	743.7	745.5	747.3	749.0	1.77
1863.	750.8	752.6	754.4	756.2	758.0	759.7	761.5	763.3	765.1	766.9	1.79
1864.	768.7	770.5	772.3	774.1	776.0	777.8	779.6	781.4	783.2	785.0	1.81
1865.	786.8	788.7	790.5	792.4	794.2	796.0	797.9	799.7	801.6	803.4	1.84
1866.	805.2	807.1	809.0	810.8	812.7	814.6	816.4	818.3	820.2	822.0	1.86
1867.	823.9	825.8	827.7	829.6	831.5	833.3	835.2	837.1	839.0	840.9	1.89
1868.	842.8	844.7	846.6	848.5	850.5	852.4	854.3	856.2	858.1	860.0	1.91
1869.	861.9	863.9	865.8	867.8	869.7	871.6	873.6	875.5	877.5	879.4	1.94
1870.	881.3	883.3	885.3	887.2	889.2	891.2	893.1	895.1	897.1	899.0	1.96
1871.	901.0	903.0	905.0	907.0	909.0	910.9	912.9	914.9	916.9	918.9	1.99
1872.	920.9	922.9	924.9	926.9	929.0	931.0	933.0	935.0	937.0	939.0	2.01
1873.	941.0	943.1	945.1	947.2	949.2	951.3	953.3	955.4	957.4	959.4	2.04
1874.	961.5	963.6	965.6	967.7	969.8	971.9	973.9	976.0	978.1	980.2	2.07
1875.	982.2	984.4	986.5	988.6	990.7	992.8	994.9	997.0	999.1	1001.2	2.11
1876.	1003.	1005.	1008.	1010.	1012.	1014.	1016.	1018.	1021.	1023.	2.14
1877.	1025.	1027.	1029.	1031.	1034.	1036.	1038.	1040.	1042.	1044.	2.18
1878.	1047.	1049.	1051.	1053.	1055.	1058.	1060.	1062.	1064.	1067.	2.21
1879.	1069.	1071.	1073.	1075.	1078.	1080.	1082.	1084.	1087.	1089.	2.24
1880.	1091.	1093.	1096.	1098.	1100.	1102.	1105.	1107.	1109.	1111.	2.26
1881.	1114.	1116.	1118.	1121.	1123.	1125.	1127.	1130.	1132.	1134.	2.27
1882.	1136.	1139.	1141.	1143.	1146.	1148.	1150.	1152.	1155.	1157.	2.28
1883.	1159.	1162.	1164.	1166.	1169.	1171.	1173.	1175.	1178.	1180.	2.30
1884.	1182.	1185.	1187.	1189.	1192.	1194.	1196.	1199.	1201.	1203.	2.32
1885.	1206.	1208.	1210.	1213.	1215.	1217.	1220.	1222.	1225.	1227.	2.36
1886.	1229.	1232.	1234.	1236.	1239.	1241.	1244.	1246.	1249.	1251.	2.41

G.H.	.0	.1	.2	.3	.4	.5	.6	.7	.8	.9	DIFF.
1887.	1253.	1256.	1258.	1261.	1263.	1266.	1268.	1271.	1273.	1276.	2.47
1888.	1278.	1281.	1283.	1286.	1288.	1291.	1293.	1296.	1298.	1301.	2.54
1889.	1304.	1306.	1309.	1311.	1314.	1317.	1319.	1322.	1324.	1327.	2.60
1890.	1330.	1332.	1335.	1338.	1340.	1343.	1345.	1348.	1351.	1353.	2.65
1891.	1356.	1359.	1362.	1364.	1367.	1370.	1372.	1375.	1378.	1380.	2.70
1892.	1383.	1386.	1389.	1391.	1394.	1397.	1400.	1402.	1405.	1408.	2.75
1893.	1411.	1413.	1416.	1419.	1422.	1425.	1427.	1430.	1433.	1436.	2.78
1894.	1438.	1441.	1444.	1447.	1450.	1453.	1455.	1458.	1461.	1464.	2.82
1895.	1467.	1470.	1472.	1475.	1478.	1481.	1484.	1487.	1490.	1492.	2.86
1896.	1495.	1498.	1501.	1504.	1507.	1510.	1513.	1516.	1518.	1521.	2.90
1897.	1524.	1527.	1530.	1533.	1536.	1539.	1542.	1545.	1548.	1551.	2.94
1898.	1554.	1557.	1560.	1563.	1566.	1569.	1572.	1575.	1578.	1581.	2.98
1899.	1583.	1587.	1590.	1593.	1596.	1599.	1602.	1605.	1608.	1611.	3.02
1900.	1614.	1617.	1620.	1623.	1626.	1629.	1632.	1635.	1638.	1641.	3.07
1901.	1644.	1648.	1651.	1654.	1657.	1660.	1663.	1666.	1669.	1672.	3.11
1902.	1676.	1679.	1682.	1685.	1688.	1691.	1695.	1698.	1701.	1704.	3.16
1903.	1707.	1710.	1714.	1717.	1720.	1723.	1726.	1730.	1733.	1736.	3.20
1904.	1739.	1742.	1746.	1749.	1752.	1755.	1759.	1762.	1765.	1768.	3.25
1905.	1772.	1775.	1778.	1782.	1785.	1788.	1792.	1795.	1798.	1801.	3.30
1906.	1805.	1808.	1811.	1815.	1818.	1822.	1825.	1828.	1832.	1835.	3.35
1907.	1838.	1842.	1845.	1849.	1852.	1855.	1859.	1862.	1866.	1869.	3.40
1908.	1872.	1876.	1879.	1883.	1886.	1890.	1893.	1897.	1900.	1903.	3.45
1909.	1907.	1910.	1914.	1917.	1921.	1924.	1928.	1931.	1935.	1938.	3.50
1910.	1942.	1945.	1949.	1953.	1956.	1960.	1963.	1967.	1970.	1974.	3.55
1911.	1977.	1981.	1985.	1988.	1992.	1995.	1999.	2003.	2006.	2010.	3.60
1912.	2013.	2017.	2021.	2024.	2028.	2032.	2035.	2039.	2043.	2046.	3.64
1913.	2050.	2054.	2057.	2061.	2065.	2068.	2072.	2076.	2080.	2083.	3.69
1914.	2087.	2091.	2094.	2098.	2102.	2106.	2109.	2113.	2117.	2121.	3.74
1915.	2124.	2128.	2132.	2136.	2140.	2143.	2147.	2151.	2155.	2158.	3.79
1916.	2162.	2166.	2170.	2174.	2178.	2182.	2185.	2189.	2193.	2197.	3.85
1917.	2201.	2205.	2209.	2213.	2216.	2220.	2224.	2228.	2232.	2236.	3.91
1918.	2240.	2244.	2248.	2252.	2256.	2260.	2264.	2268.	2272.	2276.	3.98
1919.	2280.	2284.	2288.	2292.	2296.	2300.	2304.	2308.	2312.	2316.	4.04
1920.	2320.	2324.	2328.	2332.	2337.	2341.	2345.	2349.	2353.	2357.	4.10
1921.	2361.	2365.	2369.	2374.	2378.	2382.	2386.	2390.	2394.	2399.	4.16
1922.	2403.	2407.	2411.	2415.	2420.	2424.	2428.	2432.	2436.	2441.	4.21

DIFF.

.9

.8

.7

.6

.5

.4

.3

.2

.1

.0

G.H.

	.0	.1	.2	.3	.4	.5	.6	.7	.8	.9	DIFF.
1923.	2445.	2449.	2453.	2458.	2462.	2466.	2470.	2475.	2479.	2483.	4.26
1924.	2488.	2492.	2496.	2500.	2505.	2509.	2513.	2518.	2522.	2526.	4.31
1925.	2531.	2535.	2539.	2544.	2548.	2552.	2557.	2561.	2566.	2570.	4.36
1926.	2574.	2579.	2583.	2587.	2592.	2596.	2601.	2605.	2609.	2614.	4.40
1927.	2618.	2623.	2627.	2632.	2636.	2640.	2645.	2649.	2654.	2658.	4.44
1928.	2663.	2667.	2672.	2676.	2681.	2685.	2690.	2694.	2698.	2703.	4.47
1929.	2707.	2712.	2716.	2721.	2725.	2730.	2734.	2739.	2744.	2748.	4.51
1930.	2753.	2757.	2762.	2766.	2771.	2775.	2780.	2784.	2789.	2794.	4.55
1931.	2798.	2803.	2807.	2812.	2816.	2821.	2826.	2830.	2835.	2839.	4.60
1932.	2844.	2849.	2853.	2858.	2863.	2867.	2872.	2877.	2881.	2886.	4.64
1933.	2891.	2895.	2900.	2905.	2909.	2914.	2919.	2923.	2928.	2933.	4.69
1934.	2937.	2942.	2947.	2952.	2956.	2961.	2966.	2971.	2975.	2980.	4.75
1935.	2985.	2990.	2995.	2999.	3004.	3009.	3014.	3019.	3023.	3028.	4.81
1936.	3033.	3038.	3043.	3048.	3053.	3057.	3062.	3067.	3072.	3077.	4.88
1937.	3082.	3087.	3092.	3097.	3102.	3107.	3111.	3116.	3121.	3126.	4.94
1938.	3131.	3136.	3141.	3146.	3151.	3156.	3161.	3166.	3171.	3176.	5.00
1939.	3181.	3186.	3191.	3196.	3202.	3207.	3212.	3217.	3222.	3227.	5.07
1940.	3232.	3237.	3242.	3247.	3253.	3258.	3263.	3268.	3273.	3278.	5.13
1941.	3283.	3288.	3294.	3299.	3304.	3309.	3314.	3320.	3325.	3330.	5.19
1942.	3335.	3340.	3346.	3351.	3356.	3361.	3367.	3372.	3377.	3382.	5.25
1943.	3388.	3393.	3398.	3404.	3409.	3414.	3420.	3425.	3430.	3436.	5.32
1944.	3441.	3446.	3452.	3457.	3463.	3468.	3473.	3479.	3484.	3489.	5.39
1945.	3495.	3500.	3506.	3511.	3517.	3522.	3528.	3533.	3539.	3544.	5.47
1946.	3550.	3555.	3561.	3566.	3572.	3577.	3583.	3589.	3594.	3600.	5.55
1947.	3605.	3611.	3616.	3622.	3628.	3633.	3639.	3645.	3650.	3656.	5.64
1948.	3662.	3667.	3673.	3679.	3685.	3690.	3696.	3702.	3708.	3713.	5.73
1949.	3719.	3725.	3731.	3736.	3742.	3748.	3754.	3760.	3766.	3771.	5.81
1950.	3777.	3783.	3789.	3795.	3801.	3807.	3812.	3818.	3824.	3830.	5.88
1951.	3836.	3842.	3848.	3854.	3860.	3866.	3872.	3878.	3884.	3890.	5.95
1952.	3895.	3901.	3908.	3914.	3920.	3926.	3932.	3938.	3944.	3950.	6.01
1953.	3956.	3962.	3968.	3974.	3980.	3986.	3992.	3998.	4004.	4010.	6.06
1954.	4016.	4022.	4028.	4035.	4041.	4047.	4053.	4059.	4065.	4071.	6.13
1955.	4077.	4083.	4090.	4096.	4102.	4108.	4115.	4121.	4127.	4133.	6.19
1956.	4139.	4146.	4152.	4158.	4164.	4171.	4177.	4183.	4189.	4196.	6.26
1957.	4202.	4208.	4215.	4221.	4227.	4234.	4240.	4246.	4253.	4259.	6.33
1958.	4265.	4272.	4278.	4284.	4291.	4297.	4304.	4310.	4316.	4323.	6.39

G.H.	.0	.1	.2	.3	.4	.5	.6	.7	.8	.9	DIFF.
1959.	4329.	4336.	4342.	4349.	4355.	4361.	4368.	4374.	4381.	4387.	6.44
1960.	4394.	4400.	4407.	4413.	4420.	4426.	4433.	4439.	4446.	4452.	6.48
1961.	4458.	4465.	4471.	4478.	4484.	4491.	4498.	4504.	4511.	4517.	6.50
1962.	4524.	4530.	4537.	4543.	4550.	4556.	4563.	4569.	4576.	4582.	6.51
1963.	4589.	4595.	4602.	4608.	4615.	4621.	4628.	4634.	4641.	4647.	6.52
1964.	4654.	4660.	4667.	4674.	4680.	4687.	4693.	4700.	4706.	4713.	6.54
1965.	4719.	4726.	4732.	4739.	4746.	4752.	4759.	4765.	4772.	4778.	6.56
1966.	4785.	4792.	4798.	4805.	4811.	4818.	4825.	4831.	4838.	4844.	6.60
1967.	4851.	4858.	4864.	4871.	4878.	4884.	4891.	4897.	4904.	4911.	6.64
1968.	4917.	4924.	4931.	4937.	4944.	4951.	4958.	4964.	4971.	4978.	6.69
1969.	4984.	4991.	4998.	5004.	5011.	5018.	5025.	5031.	5038.	5045.	6.72
1970.	5052.	5058.	5065.	5072.	5079.	5085.	5092.	5099.	5106.	5112.	6.74
1971.	5119.	5126.	5133.	5139.	5146.	5153.	5160.	5166.	5173.	5180.	6.75
1972.	5187.	5193.	5200.	5207.	5214.	5220.	5227.	5234.	5241.	5248.	6.77
1973.	5254.	5261.	5268.	5275.	5282.	5288.	5295.	5302.	5309.	5316.	6.81
1974.	5322.	5329.	5336.	5343.	5350.	5357.	5364.	5371.	5378.	5384.	6.89
1975.	5391.	5398.	5405.	5412.	5419.	5426.	5433.	5440.	5447.	5454.	7.01
1976.	5462.	5469.	5476.	5483.	5490.	5497.	5505.	5512.	5519.	5526.	7.19
1977.	5533.	5541.	5548.	5556.	5563.	5570.	5578.	5585.	5593.	5600.	7.39
1978.	5607.	5615.	5623.	5630.	5638.	5645.	5653.	5661.	5668.	5676.	7.60
1979.	5683.	5691.	5699.	5707.	5714.	5722.	5730.	5738.	5746.	5753.	7.78
1980.	5761.	5769.	5777.	5785.	5793.	5801.	5809.	5817.	5825.	5833.	7.94
1981.	5841.	5849.	5857.	5865.	5873.	5881.	5889.	5897.	5905.	5913.	8.05
1982.	5921.	5929.	5937.	5946.	5954.	5962.	5970.	5978.	5986.	5994.	8.13
1983.	6002.	6011.	6019.	6027.	6035.	6043.	6052.	6060.	6068.	6076.	8.19
1984.	6084.	6093.	6101.	6109.	6117.	6126.	6134.	6142.	6150.	6159.	8.24
1985.	6167.	6175.	6183.	6192.	6200.	6208.	6217.	6225.	6233.	6242.	8.30
1986.	6250.	6258.	6267.	6275.	6283.	6292.	6300.	6308.	6317.	6325.	8.36
1987.	6334.	6342.	6350.	6359.	6367.	6376.	6384.	6393.	6401.	6409.	8.43
1988.	6418.	6426.	6435.	6443.	6452.	6460.	6469.	6477.	6486.	6494.	8.51
1989.	6503.	6512.	6520.	6529.	6537.	6546.	6554.	6563.	6572.	6580.	8.58
1990.	6589.	6597.	6606.	6615.	6623.	6632.	6641.	6649.	6658.	6667.	8.66
1991.	6675.	6684.	6693.	6702.	6710.	6719.	6728.	6737.	6745.	6754.	8.73
1992.	6763.	6772.	6780.	6789.	6798.	6807.	6816.	6824.	6833.	6842.	8.80
1993.	6851.	6860.	6869.	6877.	6886.	6895.	6904.	6913.	6922.	6931.	8.88
1994.	6940.	6949.	6957.	6966.	6975.	6984.	6993.	7002.	7011.	7020.	8.94

C.H.	.0	.1	.2	.3	.4	.5	.6	.7	.8	.9	DIFF.
1995.	7029.	7038.	7047.	7056.	7065.	7074.	7083.	7092.	7101.	7110.	9.01
1996.	7119.	7128.	7137.	7146.	7156.	7165.	7174.	7183.	7192.	7201.	9.08
1997.	7210.	7219.	7228.	7237.	7247.	7256.	7265.	7274.	7283.	7292.	9.16
1998.	7302.	7311.	7320.	7329.	7339.	7348.	7357.	7366.	7375.	7385.	9.23
1999.	7394.	7403.	7413.	7422.	7431.	7441.	7450.	7459.	7468.	7478.	9.31
2000.	7487.	7496.	7506.	7515.	7525.	7534.	7543.	7553.	7562.	7572.	9.39
2001.	7581.	7590.	7600.	7609.	7619.	7628.	7638.	7647.	7657.	7666.	9.47
2002.	7676.	7685.	7695.	7704.	7714.	7723.	7733.	7742.	7752.	7762.	9.55
2003.	7771.	7781.	7790.	7800.	7810.	7819.	7829.	7839.	7848.	7858.	9.63
2004.	7867.	7877.	7887.	7897.	7906.	7916.	7926.	7935.	7945.	7955.	9.71
2005.	7965.	7974.	7984.	7994.	8004.	8014.	8023.	8033.	8043.	8053.	9.79
2006.	8062.	8072.	8082.	8092.	8102.	8112.	8122.	8132.	8141.	8151.	9.86
2007.	8161.	8171.	8181.	8191.	8201.	8211.	8221.	8231.	8241.	8251.	9.94
2008.	8261.	8271.	8281.	8291.	8301.	8311.	8321.	8331.	8341.	8351.	10.02
2009.	8361.	8371.	8381.	8391.	8401.	8411.	8421.	8431.	8441.	8452.	10.10
2010.	8462.	8472.	8482.	8492.	8502.	8513.	8523.	8533.	8543.	8553.	10.18
2011.	8564.	8574.	8584.	8594.	8605.	8615.	8625.	8635.	8646.	8656.	10.26
2012.	8666.	8677.	8687.	8697.	8708.	8718.	8729.	8739.	8749.	8760.	10.38
2013.	8770.	8781.	8791.	8802.	8812.	8823.	8833.	8844.	8854.	8865.	10.48
2014.	8875.	8886.	8896.	8907.	8917.	8928.	8939.	8949.	8960.	8970.	10.59
2015.	8981.										0.0

SPILLWAY ELEVATION = 1950.0
 CREST ELEVATION = 2015.0
 ASSUMED HIGH WATER LINE = 2015.0

JS
 9-12-83

INTERPOLATED RESULTS

POINT NUMBER *****	ELEVATION (FEET) *****	AREA (ACRES) *****	BY JS 09/12/83
1	1748.00	0.0	
2	1749.00	0.02	
3	1750.00	0.03	
4	1751.00	0.04	
5	1752.00	0.04	
6	1753.00	0.04	
7	1754.00	0.04	
8	1755.00	0.06	
9	1756.00	0.09	
10	1757.00	0.14	
11	1758.00	0.20	
12	1759.00	0.28	
13	1760.00	0.36	
14	1761.00	0.44	
15	1762.00	0.53	
16	1763.00	0.63	
17	1764.00	0.72	
18	1765.00	0.82	
19	1766.00	0.91	
20	1767.00	1.01	
21	1768.00	1.10	
22	1769.00	1.19	
23	1770.00	1.27	
24	1771.00	1.35	
25	1772.00	1.42	
26	1773.00	1.49	
27	1774.00	1.57	
28	1775.00	1.65	
29	1776.00	1.73	
30	1777.00	1.82	
31	1778.00	1.91	
32	1779.00	2.00	
33	1780.00	2.09	
34	1781.00	2.18	
35	1782.00	2.27	
36	1783.00	2.35	
37	1784.00	2.43	
38	1785.00	2.51	
39	1786.00	2.59	
40	1787.00	2.67	
41	1788.00	2.75	
42	1789.00	2.83	
43	1790.00	2.93	
44	1791.00	3.05	
45	1792.00	3.17	
46	1793.00	3.31	
47	1794.00	3.44	
48	1795.00	3.58	
49	1796.00	3.71	
50	1797.00	3.83	
51	1798.00	3.95	

INTERPOLATED RESULTS

POINT NUMBER	ELEVATION (FEET)	AREA (ACRES)	BY JS 09/12/83
*****	*****	*****	
52	1799.00	4.06	
53	1800.00	4.17	
54	1801.00	4.28	
55	1802.00	4.39	
56	1803.00	4.50	
57	1804.00	4.62	
58	1805.00	4.73	
59	1806.00	4.85	
60	1807.00	4.98	
61	1808.00	5.11	
62	1809.00	5.25	
63	1810.00	5.39	
64	1811.00	5.54	
65	1812.00	5.69	
66	1813.00	5.84	
67	1814.00	6.00	
68	1815.00	6.15	
69	1816.00	6.30	
70	1817.00	6.45	
71	1818.00	6.61	
72	1819.00	6.79	
73	1820.00	6.99	
74	1821.00	7.22	
75	1822.00	7.48	
76	1823.00	7.75	
77	1824.00	8.02	
78	1825.00	8.29	
79	1826.00	8.56	
80	1827.00	8.81	
81	1828.00	9.07	
82	1829.00	9.33	
83	1830.00	9.61	
84	1831.00	9.90	
85	1832.00	10.22	
86	1833.00	10.55	
87	1834.00	10.91	
88	1835.00	11.28	
89	1836.00	11.67	
90	1837.00	12.06	
91	1838.00	12.46	
92	1839.00	12.84	
93	1840.00	13.21	
94	1841.00	13.54	
95	1842.00	13.84	
96	1843.00	14.11	
97	1844.00	14.34	
98	1845.00	14.54	
99	1846.00	14.71	
100	1847.00	14.86	
101	1848.00	15.00	
102	1849.00	15.14	

INTERPOLATED RESULTS

POINT NUMBER	ELEVATION (FEET)	AREA (ACRES)	BY JS 09/12/83
*****	*****	*****	
103	1850.00	15.30	
104	1851.00	15.48	
105	1852.00	15.69	
106	1853.00	15.90	
107	1854.00	16.12	
108	1855.00	16.32	
109	1856.00	16.52	
110	1857.00	16.70	
111	1858.00	16.87	
112	1859.00	17.05	
113	1860.00	17.22	
114	1861.00	17.41	
115	1862.00	17.60	
116	1863.00	17.81	
117	1864.00	18.03	
118	1865.00	18.26	
119	1866.00	18.51	
120	1867.00	18.76	
121	1868.00	19.03	
122	1869.00	19.29	
123	1870.00	19.54	
124	1871.00	19.79	
125	1872.00	20.04	
126	1873.00	20.30	
127	1874.00	20.59	
128	1875.00	20.90	
129	1876.00	21.26	
130	1877.00	21.63	
131	1878.00	21.98	
132	1879.00	22.29	
133	1880.00	22.54	
134	1881.00	22.69	
135	1882.00	22.80	
136	1883.00	22.92	
137	1884.00	23.10	
138	1885.00	23.40	
139	1886.00	23.86	
140	1887.00	24.43	
141	1888.00	25.07	
142	1889.00	25.72	
143	1890.00	26.32	
144	1891.00	26.83	
145	1892.00	27.27	
146	1893.00	27.66	
147	1894.00	28.02	
148	1895.00	28.39	
149	1896.00	28.78	
150	1897.00	29.19	
151	1898.00	29.61	
152	1899.00	30.05	
153	1900.00	30.49	

INTERPOLATED RESULTS

POINT NUMBER	ELEVATION (FEET)	AREA (ACRES)	BY JS 09/12/83
154	1901.00	30.92	
155	1902.00	31.35	
156	1903.00	31.80	
157	1904.00	32.26	
158	1905.00	32.74	
159	1906.00	33.26	
160	1907.00	33.78	
161	1908.00	34.31	
162	1909.00	34.83	
163	1910.00	35.33	
164	1911.00	35.80	
165	1912.00	36.25	
166	1913.00	36.70	
167	1914.00	37.17	
168	1915.00	37.68	
169	1916.00	38.24	
170	1917.00	38.84	
171	1918.00	39.44	
172	1919.00	40.09	
173	1920.00	40.71	
174	1921.00	41.31	
175	1922.00	41.87	
176	1923.00	42.41	
177	1924.00	42.90	
178	1925.00	43.36	
179	1926.00	43.78	
180	1927.00	44.17	
181	1928.00	44.55	
182	1929.00	44.93	
183	1930.00	45.33	
184	1931.00	45.76	
185	1932.00	46.22	
186	1933.00	46.71	
187	1934.00	47.24	
188	1935.00	47.81	
189	1936.00	48.42	
190	1937.00	49.06	
191	1938.00	49.71	
192	1939.00	50.36	
193	1940.00	51.00	
194	1941.00	51.63	
195	1942.00	52.25	
196	1943.00	52.89	
197	1944.00	53.57	
198	1945.00	54.32	
199	1946.00	55.15	
200	1947.00	56.02	
201	1948.00	56.91	
202	1949.00	57.75	
203	1950.00	58.53	
204	1951.00	59.20	

INTERPOLATED RESULTS

POINT NUMBER *****	ELEVATION (FEET) *****	AREA (ACRES) *****	BY JS 09/12/83
205	1952.00	59.80	
206	1953.00	60.36	
207	1954.00	60.93	
208	1955.00	61.55	
209	1956.00	62.24	
210	1957.00	62.96	
211	1958.00	63.64	
212	1959.00	64.24	
213	1960.00	64.69	
214	1961.00	64.96	
215	1962.00	65.10	
216	1963.00	65.18	
217	1964.00	65.28	
218	1965.00	65.46	
219	1966.00	65.80	
220	1967.00	66.22	
221	1968.00	66.67	
222	1969.00	67.08	
223	1970.00	67.37	
224	1971.00	67.51	
225	1972.00	67.63	
226	1973.00	67.88	
227	1974.00	68.42	
228	1975.00	69.41	
229	1976.00	70.95	
230	1977.00	72.87	
231	1978.00	74.96	
232	1979.00	76.99	
233	1980.00	78.74	
234	1981.00	80.05	
235	1982.00	80.98	
236	1983.00	81.66	
237	1984.00	82.19	
238	1985.00	82.71	
239	1986.00	83.31	
240	1987.00	83.99	
241	1988.00	84.73	
242	1989.00	85.49	
243	1990.00	86.25	
244	1991.00	86.99	
245	1992.00	87.72	
246	1993.00	88.43	
247	1994.00	89.13	
248	1995.00	89.83	
249	1996.00	90.53	
250	1997.00	91.23	
251	1998.00	91.95	
252	1999.00	92.69	
253	2000.00	93.46	
254	2001.00	94.25	
255	2002.00	95.07	

INTERPOLATED RESULTS

POINT NUMBER	ELEVATION (FEET)	AREA (ACRES)	BY JS 09/12/83
*****	*****	*****	
256	2003.00	95.89	
257	2004.00	96.70	
258	2005.00	97.50	
259	2006.00	98.26	
260	2007.00	99.02	
261	2008.00	99.78	
262	2009.00	100.58	
263	2010.00	101.42	
264	2011.00	102.34	
265	2012.00	103.31	
266	2013.00	104.32	
267	2014.00	105.37	
268	2015.00	106.43	

Paçoima Dam Valve #2 Rating Table - 30° Hollow Jet Valve

PAÇOIMA DAM VALVE # 2 RATING TABLE - 30° HOLLOW JET VALVE *** RATING TABLE EFFECTIVE JANUARY 1977 (01-07-77) E VALVES

RESERVOIR ELEVATION (FEET)	UNBULATED DISCHARGE (GFS)										E VALVES									
	5	10	15	20	25	30	35	40	45	50	55	60	65	70	75	80	85	90	95	100
1851.00	18	18	18	18	18	18	18	18	18	18	18	18	18	18	18	18	18	18	18	18
1852.00	19	39	58	68	68	68	68	68	68	68	68	68	68	68	68	68	68	68	68	68
1853.00	19	39	58	77	95	113	131	141	141	141	141	141	141	141	141	141	141	141	141	141
1854.00	20	39	58	77	96	114	131	148	164	180	191	202	214	224	224	224	224	224	224	224
1855.00	20	39	58	77	96	114	132	149	165	181	192	203	215	224	234	243	254	262	269	275
1856.00	20	39	59	78	96	114	132	149	165	181	192	203	216	227	237	244	255	263	270	276
1857.00	20	39	59	78	97	115	132	150	166	182	193	204	216	228	237	245	255	264	271	277
1858.00	20	39	59	78	97	115	133	150	166	182	194	205	217	228	238	245	254	261	268	274
1859.00	20	40	59	78	97	116	133	150	167	183	194	205	217	229	239	246	257	266	272	279
1860.00	20	40	59	79	97	116	134	151	168	183	195	206	218	230	240	247	258	266	273	280
1861.00	20	40	60	79	98	116	134	151	168	184	195	207	219	231	240	248	259	267	274	281
1862.00	20	40	60	79	98	117	135	152	169	185	196	207	220	231	241	248	260	268	275	281
1863.00	20	40	60	79	98	117	135	152	169	185	197	208	220	232	242	249	260	269	276	282
1864.00	20	40	60	80	99	117	135	153	170	186	197	208	221	233	243	250	261	270	277	283
1865.00	20	40	60	80	99	118	136	153	170	186	198	209	222	234	243	251	262	271	277	284
1866.00	20	40	60	80	99	118	136	154	171	187	198	210	222	234	244	251	263	271	278	285
1867.00	20	41	61	80	100	118	137	154	171	187	199	210	223	235	245	252	263	272	279	286
1868.00	20	41	61	81	100	119	137	155	172	188	200	211	224	236	246	253	264	273	280	287
1869.00	20	41	61	81	100	119	137	155	172	189	200	212	224	236	246	254	265	274	281	288
1870.00	21	41	61	81	100	119	138	156	173	189	201	212	225	237	247	254	266	275	282	288
1871.00	21	41	61	81	101	120	138	156	173	190	201	213	226	238	248	255	267	275	282	289
1872.00	21	41	62	82	101	120	139	157	174	190	202	213	226	239	249	256	267	276	283	290
1873.00	21	41	62	82	101	121	139	157	174	191	203	214	227	239	249	257	268	277	284	291
1874.00	21	41	62	82	102	121	139	157	175	191	203	215	228	240	250	257	269	278	285	292
1875.00	21	42	62	82	102	121	140	158	175	192	204	215	228	241	251	258	270	279	286	293
1876.00	21	42	62	82	102	122	140	158	176	192	204	216	229	241	251	259	270	279	287	293
1877.00	21	42	62	83	103	122	141	159	176	193	205	217	230	242	252	260	271	280	287	294
1878.00	21	42	63	83	103	122	141	159	177	193	206	217	230	243	253	260	272	281	288	295
1879.00	21	42	63	83	103	123	141	160	177	194	206	218	231	243	254	261	273	282	289	296
1880.00	21	42	63	83	103	123	142	160	178	195	207	218	231	244	254	262	274	283	290	297
1881.00	21	42	63	84	104	123	142	161	178	195	207	219	232	245	255	263	274	283	291	298
1882.00	21	42	63	84	104	124	143	161	179	196	208	220	233	245	256	263	275	284	291	298
1883.00	21	42	63	84	104	124	143	161	179	196	208	220	233	246	256	264	276	285	292	299
1884.00	21	43	64	84	105	124	143	162	180	197	209	221	234	247	257	265	277	286	293	300
1885.00	21	43	64	85	105	125	144	162	180	197	210	221	235	247	258	265	277	286	294	301
1886.00	21	43	64	85	105	125	144	163	181	198	210	222	235	248	258	266	278	287	295	302
1887.00	22	43	64	85	105	125	145	163	181	198	211	223	236	249	259	267	279	288	296	303
1888.00	22	43	64	85	106	126	145	164	182	199	211	223	237	249	260	268	280	289	296	303
1889.00	22	43	64	85	106	126	145	164	182	199	212	224	237	250	261	268	280	290	297	304

Pacoima Dam Valve #2 Rating Table - 30" Hollow Jet Valve Page 2 of 3

PACOIMA DAM VALVE # 2 RATING TABLE - 30" HOLLOW JET VALVE *** RATING TABLE EFFECTIVE JANUARY 1977 (01-07-77) F. ALVES

RESERVOIR TABULATED DISCHARGE (CFS)

RESERVOIR ELEVATION (FEET)	5	10	15	20	25	30	35	40	45	50	55	60	65	70	75	80	85	90	95	100
1889.00	22.	43.	64.	85.	106.	126.	145.	164.	182.	199.	212.	224.	237.	250.	261.	268.	280.	290.	297.	304.
1890.00	22.	43.	65.	86.	106.	126.	146.	165.	183.	200.	212.	224.	238.	251.	261.	269.	281.	290.	298.	305.
1891.00	22.	43.	65.	86.	107.	127.	146.	165.	183.	200.	213.	225.	238.	251.	262.	270.	282.	291.	298.	306.
1892.00	22.	44.	65.	86.	107.	127.	147.	165.	184.	201.	213.	226.	239.	252.	263.	270.	283.	292.	299.	306.
1893.00	22.	44.	65.	86.	107.	127.	147.	166.	184.	201.	214.	226.	240.	253.	263.	271.	283.	293.	300.	307.
1894.00	22.	44.	65.	87.	107.	128.	147.	166.	184.	202.	215.	227.	240.	253.	264.	272.	284.	293.	301.	308.
1895.00	22.	44.	65.	87.	108.	128.	148.	167.	185.	202.	215.	227.	241.	254.	265.	273.	285.	294.	302.	309.
1896.00	22.	44.	66.	87.	108.	128.	148.	167.	185.	203.	216.	228.	242.	255.	265.	273.	285.	295.	302.	310.
1897.00	22.	44.	66.	87.	108.	129.	148.	168.	186.	204.	216.	228.	242.	255.	266.	274.	286.	296.	303.	310.
1898.00	22.	44.	66.	87.	108.	129.	149.	168.	186.	204.	217.	229.	243.	256.	267.	275.	287.	296.	304.	311.
1899.00	22.	44.	66.	88.	109.	129.	149.	168.	187.	205.	217.	230.	243.	257.	267.	275.	288.	297.	305.	312.
1900.00	22.	44.	66.	88.	109.	130.	150.	169.	187.	205.	218.	230.	244.	257.	268.	276.	288.	298.	305.	313.
1901.00	22.	45.	66.	88.	109.	130.	150.	169.	188.	206.	218.	231.	245.	258.	269.	277.	289.	299.	306.	314.
1902.00	22.	45.	67.	88.	110.	130.	150.	170.	188.	206.	219.	231.	245.	258.	269.	277.	290.	299.	407.	314.
1903.00	22.	45.	67.	89.	110.	131.	151.	170.	189.	207.	219.	232.	246.	259.	270.	278.	290.	300.	308.	315.
1904.00	22.	45.	67.	89.	110.	131.	151.	170.	189.	207.	220.	232.	246.	260.	271.	279.	291.	301.	308.	316.
1905.00	23.	45.	67.	89.	110.	131.	151.	171.	190.	208.	221.	233.	247.	260.	271.	279.	292.	302.	309.	317.
1906.00	23.	45.	67.	89.	111.	132.	152.	171.	190.	208.	221.	234.	248.	261.	272.	280.	293.	302.	310.	317.
1907.00	23.	45.	67.	89.	111.	132.	152.	172.	191.	209.	222.	234.	248.	262.	273.	281.	293.	303.	311.	318.
1908.00	23.	45.	68.	90.	111.	132.	152.	172.	191.	209.	222.	235.	249.	262.	273.	281.	294.	304.	311.	319.
1909.00	23.	45.	68.	90.	111.	132.	153.	173.	191.	210.	223.	235.	249.	263.	274.	282.	295.	304.	312.	320.
1910.00	23.	46.	68.	90.	112.	133.	153.	173.	192.	210.	223.	236.	250.	264.	275.	283.	295.	305.	313.	320.
1911.00	23.	46.	68.	90.	112.	133.	154.	173.	192.	211.	224.	236.	251.	264.	275.	284.	296.	306.	314.	321.
1912.00	23.	46.	68.	90.	112.	133.	154.	174.	193.	211.	224.	237.	251.	265.	276.	284.	297.	307.	314.	322.
1913.00	23.	46.	68.	91.	112.	134.	154.	174.	193.	212.	225.	238.	252.	265.	277.	285.	298.	307.	315.	323.
1914.00	23.	46.	69.	91.	113.	134.	155.	175.	194.	212.	225.	238.	252.	266.	277.	286.	298.	308.	316.	324.
1915.00	23.	46.	69.	91.	113.	134.	155.	175.	194.	213.	226.	239.	253.	267.	278.	286.	299.	309.	317.	324.
1916.00	23.	46.	69.	91.	113.	135.	155.	175.	195.	213.	226.	239.	254.	267.	279.	287.	300.	310.	317.	325.
1917.00	23.	46.	69.	92.	114.	135.	156.	176.	195.	214.	227.	240.	254.	268.	279.	288.	300.	310.	318.	326.
1918.00	23.	46.	69.	92.	114.	135.	156.	176.	196.	214.	227.	240.	255.	269.	280.	288.	301.	311.	319.	327.
1919.00	23.	46.	69.	92.	114.	136.	156.	177.	196.	215.	228.	241.	255.	269.	280.	289.	302.	312.	320.	327.
1920.00	23.	47.	70.	92.	114.	136.	157.	177.	196.	215.	229.	241.	256.	270.	281.	289.	302.	312.	320.	328.
1921.00	23.	47.	70.	93.	115.	136.	157.	177.	197.	216.	229.	242.	257.	270.	282.	290.	303.	313.	321.	329.
1922.00	24.	47.	70.	93.	115.	137.	158.	178.	197.	216.	230.	243.	257.	271.	283.	291.	304.	314.	322.	330.
1923.00	24.	47.	70.	93.	115.	137.	158.	178.	198.	217.	230.	243.	258.	272.	283.	291.	304.	315.	323.	330.
1924.00	24.	47.	70.	93.	115.	137.	158.	179.	198.	217.	231.	244.	258.	272.	284.	292.	305.	315.	323.	331.

Pacoima Dam Valve #2 Rating Table - 30" Hollow Jet Valve Page 3 of 3

PACOIMA DAM VALVE # 2 RATING TABLE - 30" HOLLOW JFT VALVE *** RATING TABLE EFFECTIVE JANUARY 1977 (01-07-77) F-ALVES																				
RESERVOIR ELEVATION (FEET)	LABULATED DISCHARGE (CFS)																			
	5	10	15	20	25	30	35	40	45	50	55	60	65	70	75	80	85	90	95	100
1924.00	24.	47.	70.	93.	115.	137.	158.	179.	198.	217.	231.	244.	258.	273.	284.	292.	305.	315.	323.	331.
1925.00	24.	47.	70.	93.	116.	137.	159.	179.	199.	218.	231.	244.	259.	273.	284.	293.	306.	316.	324.	332.
1926.00	24.	47.	71.	93.	116.	138.	159.	179.	199.	218.	232.	245.	259.	274.	285.	293.	307.	317.	325.	332.
1927.00	24.	47.	71.	94.	116.	138.	159.	180.	200.	218.	232.	245.	260.	274.	285.	294.	307.	317.	325.	333.
1928.00	24.	47.	71.	94.	116.	138.	160.	180.	200.	219.	233.	246.	261.	275.	286.	295.	308.	318.	326.	337.
1929.00	24.	48.	71.	94.	117.	139.	160.	181.	200.	219.	233.	246.	261.	276.	287.	295.	309.	319.	327.	335.
1930.00	24.	48.	71.	94.	117.	139.	160.	181.	201.	220.	234.	247.	262.	276.	287.	296.	308.	319.	328.	335.
1931.00	24.	48.	71.	94.	117.	139.	161.	181.	201.	220.	234.	247.	262.	276.	288.	297.	310.	320.	328.	336.
1932.00	24.	48.	71.	95.	117.	140.	161.	182.	202.	221.	235.	248.	263.	277.	289.	297.	311.	321.	329.	337.
1933.00	24.	48.	72.	95.	118.	140.	161.	182.	202.	221.	235.	248.	263.	278.	289.	298.	311.	321.	330.	338.
1934.00	24.	48.	72.	95.	118.	140.	162.	183.	203.	222.	236.	249.	264.	278.	290.	299.	312.	322.	330.	338.
1935.00	24.	48.	72.	95.	118.	140.	162.	183.	203.	222.	236.	250.	265.	279.	291.	299.	313.	323.	331.	339.
1936.00	24.	48.	72.	95.	118.	141.	162.	183.	208.	223.	237.	250.	265.	279.	291.	300.	313.	324.	332.	340.
1937.00	24.	48.	72.	96.	119.	141.	163.	184.	204.	223.	237.	251.	266.	280.	292.	300.	314.	325.	333.	340.
1938.00	24.	48.	72.	96.	119.	141.	163.	184.	204.	224.	238.	251.	266.	281.	292.	301.	315.	325.	333.	341.
1939.00	24.	49.	73.	96.	119.	142.	163.	185.	205.	224.	238.	252.	267.	281.	293.	302.	315.	326.	334.	342.
1940.00	24.	49.	73.	96.	119.	142.	164.	185.	205.	225.	239.	252.	267.	282.	294.	302.	316.	326.	335.	343.
1941.00	24.	49.	73.	96.	120.	142.	164.	185.	206.	225.	239.	253.	268.	282.	294.	303.	317.	327.	335.	343.
1942.00	24.	49.	73.	97.	120.	143.	164.	186.	206.	226.	240.	253.	268.	283.	295.	304.	317.	328.	336.	344.
1943.00	24.	49.	73.	97.	120.	143.	165.	186.	206.	226.	240.	254.	269.	284.	295.	306.	318.	328.	337.	345.
1944.00	25.	49.	73.	97.	120.	143.	165.	186.	207.	227.	241.	254.	270.	284.	296.	305.	318.	329.	337.	345.
1945.00	25.	49.	73.	97.	121.	143.	165.	187.	207.	227.	241.	255.	270.	285.	297.	306.	319.	330.	338.	346.
1946.00	25.	49.	74.	97.	121.	144.	166.	187.	208.	227.	242.	255.	271.	285.	297.	306.	320.	330.	339.	347.
1947.00	25.	49.	74.	98.	121.	144.	166.	188.	208.	228.	242.	256.	271.	286.	298.	307.	320.	331.	339.	348.
1948.00	25.	49.	74.	98.	121.	144.	167.	188.	209.	228.	243.	256.	272.	286.	298.	307.	321.	332.	340.	348.
1949.00	25.	50.	74.	98.	122.	145.	167.	188.	209.	229.	243.	257.	272.	287.	299.	308.	322.	332.	341.	349.
1950.00	25.	50.	74.	98.	122.	145.	167.	189.	209.	229.	244.	257.	273.	288.	300.	309.	322.	333.	342.	350.

Pacoima Dam Valve #3 Rating Table - 30" Hollow Jet Valve

PACOIMA DAM VALVE #3 RATING TABLE - 30" HOLLOW JET VALVE *** RATING TABLE EFFECTIVE JANUARY 1977 (01-07-77) F. ALVES

RESERVOIR ELEVATION (FEET)	TABULATED DISCHARGE (CFS)																				
	5	10	15	20	25	30	35	40	45	50	55	60	65	70	75	80	85	90	95	100	
1850.00	0.	0.	0.	0.	0.	0.	0.	0.	0.	0.	0.	0.	0.	0.	0.	0.	0.	0.	0.	0.	0.
1851.00	16.	25.	25.	25.	25.	25.	25.	25.	25.	25.	25.	25.	25.	25.	25.	25.	25.	25.	25.	25.	25.
1852.00	15.	32.	47.	63.	78.	78.	78.	78.	78.	78.	78.	78.	78.	78.	78.	78.	78.	78.	78.	78.	78.
1853.00	16.	32.	48.	63.	78.	93.	108.	122.	135.	148.	157.	157.	157.	157.	157.	157.	157.	157.	157.	157.	157.
1854.00	16.	32.	48.	63.	79.	94.	108.	122.	136.	149.	159.	168.	178.	188.	196.	202.	212.	219.	225.	230.	230.
1855.00	16.	32.	48.	64.	79.	94.	109.	123.	137.	150.	159.	169.	179.	189.	197.	203.	213.	220.	226.	231.	231.
1856.00	16.	32.	48.	64.	80.	95.	109.	124.	137.	151.	160.	169.	180.	190.	198.	204.	214.	221.	227.	232.	232.
1857.00	16.	33.	49.	64.	80.	95.	110.	124.	138.	151.	161.	170.	181.	191.	199.	205.	215.	222.	228.	233.	233.
1858.00	16.	33.	49.	65.	80.	96.	110.	125.	139.	152.	162.	171.	182.	192.	200.	206.	216.	223.	229.	235.	235.
1859.00	16.	33.	49.	65.	81.	96.	111.	125.	139.	153.	162.	172.	182.	192.	201.	207.	217.	224.	230.	236.	236.
1860.00	17.	33.	49.	65.	81.	96.	111.	126.	140.	153.	163.	173.	183.	193.	202.	208.	218.	225.	231.	237.	237.
1861.00	17.	33.	49.	66.	81.	97.	112.	126.	141.	154.	164.	174.	184.	194.	203.	209.	219.	226.	232.	238.	238.
1862.00	17.	33.	50.	66.	82.	97.	112.	127.	141.	155.	165.	175.	185.	195.	204.	210.	219.	227.	233.	239.	239.
1863.00	17.	33.	50.	66.	82.	98.	113.	128.	142.	155.	165.	175.	186.	196.	204.	211.	220.	228.	234.	240.	240.
1864.00	17.	34.	50.	66.	82.	98.	113.	128.	142.	156.	166.	176.	186.	197.	205.	212.	221.	229.	235.	241.	241.
1865.00	17.	34.	50.	67.	83.	99.	114.	129.	143.	157.	167.	177.	187.	198.	206.	213.	222.	230.	236.	242.	242.
1866.00	17.	34.	51.	67.	83.	99.	114.	129.	144.	158.	168.	177.	188.	199.	207.	214.	223.	231.	237.	243.	243.
1867.00	17.	34.	51.	67.	84.	99.	115.	130.	144.	158.	168.	178.	189.	199.	208.	216.	224.	232.	238.	244.	244.
1868.00	17.	34.	51.	68.	84.	100.	115.	130.	145.	159.	169.	179.	190.	200.	209.	215.	225.	233.	239.	245.	245.
1869.00	17.	34.	51.	68.	84.	100.	116.	131.	146.	160.	170.	180.	191.	201.	210.	216.	226.	234.	240.	246.	246.
1870.00	17.	34.	51.	68.	85.	101.	116.	132.	146.	160.	170.	180.	191.	202.	211.	217.	227.	235.	241.	247.	247.
1871.00	17.	35.	52.	68.	85.	101.	117.	132.	147.	161.	171.	181.	192.	203.	212.	218.	228.	236.	242.	248.	248.
1872.00	17.	35.	52.	69.	85.	102.	117.	133.	147.	162.	172.	182.	193.	204.	212.	219.	229.	237.	243.	249.	249.
1873.00	17.	35.	52.	69.	86.	102.	118.	133.	148.	162.	173.	182.	194.	204.	213.	220.	230.	238.	244.	250.	250.
1874.00	18.	35.	52.	69.	86.	102.	118.	134.	149.	163.	173.	183.	194.	205.	214.	221.	231.	239.	245.	251.	251.
1875.00	18.	35.	52.	70.	86.	103.	119.	134.	149.	164.	174.	184.	195.	206.	215.	222.	232.	240.	246.	252.	252.
1876.00	18.	35.	53.	70.	87.	103.	119.	135.	150.	164.	175.	185.	196.	207.	216.	223.	233.	241.	247.	253.	253.
1877.00	18.	35.	53.	70.	87.	104.	120.	135.	150.	165.	175.	185.	197.	208.	217.	224.	234.	242.	248.	254.	254.
1878.00	18.	36.	53.	70.	87.	104.	120.	136.	151.	165.	176.	186.	198.	209.	218.	224.	235.	243.	249.	255.	255.
1879.00	18.	36.	53.	71.	88.	104.	121.	136.	152.	166.	177.	187.	198.	209.	218.	225.	236.	244.	250.	256.	256.
1880.00	18.	36.	54.	71.	88.	105.	121.	137.	152.	167.	177.	188.	199.	210.	219.	226.	236.	245.	251.	257.	257.
1881.00	18.	36.	54.	71.	88.	105.	122.	137.	153.	167.	178.	188.	200.	211.	220.	227.	237.	245.	252.	258.	258.
1882.00	18.	36.	54.	72.	89.	106.	122.	138.	153.	168.	179.	189.	201.	212.	221.	228.	238.	246.	253.	259.	259.
1883.00	18.	36.	54.	72.	89.	106.	122.	138.	154.	169.	179.	190.	201.	213.	222.	229.	239.	247.	254.	260.	260.
1884.00	18.	36.	54.	72.	89.	106.	123.	139.	154.	169.	180.	190.	202.	213.	223.	229.	240.	248.	255.	261.	261.
1885.00	18.	37.	55.	72.	90.	107.	123.	139.	155.	170.	181.	191.	203.	214.	223.	230.	241.	249.	256.	262.	262.
1886.00	18.	37.	55.	73.	90.	107.	124.	140.	156.	171.	181.	192.	204.	215.	224.	231.	242.	250.	257.	263.	263.
1887.00	18.	37.	55.	73.	90.	108.	124.	141.	156.	171.	182.	193.	204.	216.	225.	232.	243.	251.	258.	264.	264.
1888.00	18.	37.	55.	73.	91.	108.	125.	141.	157.	172.	183.	194.	205.	217.	226.	233.	244.	252.	259.	265.	265.
1889.00	18.	37.	55.	73.	91.	108.	125.	142.	157.	172.	183.	194.	206.	217.	227.	234.	245.	253.	260.	266.	266.

Pacoima Dam Valve #3 Rating Table - 30" Hollow Jet Valve

PACOIMA DAM VALVE #3 RATING TABLE - 30" HOLLOW JET VALVE *** RATING TABLE EFFECTIVE JANUARY 1977 (01-07-77) E, ALVES																				
RESERVOIR ELEVATION (FEET)	TAMULATED DISCHARGE (CFS)																			
	5	10	15	20	25	30	35	40	45	50	55	60	65	70	75	80	85	90	95	100
1889.00	19.	37.	55.	73.	91.	108.	125.	142.	157.	172.	183.	194.	206.	217.	227.	234.	245.	253.	260.	266.
1890.00	19.	37.	56.	74.	91.	109.	126.	142.	158.	173.	184.	195.	207.	218.	228.	235.	245.	254.	261.	267.
1891.00	19.	37.	56.	74.	92.	109.	126.	143.	158.	174.	185.	195.	207.	219.	228.	235.	246.	255.	261.	268.
1892.00	19.	37.	56.	74.	92.	110.	127.	143.	159.	174.	185.	196.	208.	220.	229.	236.	247.	256.	262.	269.
1893.00	19.	38.	56.	74.	92.	110.	127.	144.	160.	175.	186.	197.	209.	220.	230.	237.	248.	256.	263.	270.
1894.00	19.	38.	56.	75.	93.	110.	127.	144.	160.	176.	187.	197.	210.	221.	231.	238.	249.	257.	264.	271.
1895.00	19.	38.	57.	75.	93.	111.	128.	145.	161.	176.	187.	198.	210.	222.	232.	239.	250.	258.	265.	272.
1896.00	19.	38.	57.	75.	93.	111.	128.	145.	161.	177.	188.	199.	211.	223.	233.	240.	251.	259.	266.	273.
1897.00	19.	38.	57.	75.	94.	111.	129.	146.	162.	177.	189.	200.	212.	224.	233.	240.	251.	260.	267.	274.
1898.00	19.	38.	57.	76.	94.	112.	129.	146.	162.	178.	189.	200.	212.	224.	234.	241.	252.	261.	268.	275.
1899.00	19.	38.	57.	76.	94.	112.	130.	147.	163.	179.	190.	201.	213.	225.	235.	242.	253.	262.	269.	276.
1900.00	19.	38.	57.	76.	95.	113.	130.	147.	163.	179.	191.	202.	214.	226.	236.	243.	254.	263.	270.	276.
1901.00	19.	39.	58.	76.	95.	113.	131.	148.	164.	180.	191.	202.	215.	227.	236.	244.	255.	264.	271.	277.
1902.00	19.	39.	58.	77.	95.	113.	131.	148.	164.	180.	192.	203.	215.	228.	237.	244.	256.	264.	271.	278.
1903.00	19.	39.	58.	77.	96.	114.	131.	148.	165.	181.	192.	204.	216.	228.	238.	245.	257.	265.	272.	279.
1904.00	20.	39.	58.	77.	96.	114.	132.	149.	166.	181.	193.	204.	217.	229.	239.	246.	257.	266.	273.	280.
1905.00	20.	39.	58.	77.	96.	114.	132.	149.	166.	182.	194.	205.	217.	230.	239.	247.	258.	267.	274.	281.
1906.00	20.	39.	59.	78.	97.	115.	133.	150.	167.	183.	194.	206.	218.	230.	240.	248.	259.	268.	275.	282.
1907.00	20.	39.	59.	78.	97.	115.	133.	150.	167.	183.	195.	206.	219.	231.	241.	249.	260.	269.	276.	283.
1908.00	20.	39.	59.	78.	97.	116.	134.	151.	168.	184.	196.	207.	220.	232.	242.	249.	261.	270.	277.	284.
1909.00	20.	40.	59.	78.	97.	116.	134.	151.	168.	184.	196.	207.	220.	232.	243.	250.	262.	270.	278.	285.
1910.00	20.	40.	59.	79.	98.	116.	134.	152.	169.	185.	197.	208.	221.	233.	243.	251.	262.	271.	278.	285.
1911.00	20.	40.	60.	79.	98.	117.	135.	152.	169.	186.	197.	209.	222.	234.	244.	252.	263.	272.	279.	286.
1912.00	20.	40.	60.	79.	98.	117.	135.	153.	170.	186.	198.	209.	222.	235.	245.	252.	264.	273.	280.	287.
1913.00	20.	40.	60.	79.	99.	117.	136.	153.	170.	187.	199.	210.	223.	235.	246.	253.	265.	274.	281.	288.
1914.00	20.	40.	60.	80.	99.	118.	136.	154.	171.	187.	199.	211.	224.	236.	246.	254.	266.	275.	282.	289.
1915.00	20.	40.	60.	80.	99.	118.	136.	154.	171.	188.	200.	211.	224.	237.	247.	255.	266.	276.	283.	290.
1916.00	20.	40.	60.	80.	100.	118.	137.	155.	172.	188.	200.	212.	225.	238.	248.	256.	267.	276.	284.	291.
1917.00	20.	41.	61.	80.	100.	119.	137.	155.	172.	189.	201.	213.	226.	239.	249.	257.	268.	277.	285.	292.
1918.00	20.	41.	61.	81.	100.	119.	138.	156.	173.	190.	202.	213.	226.	239.	249.	257.	269.	278.	286.	293.
1919.00	20.	41.	61.	81.	100.	120.	138.	156.	173.	190.	202.	214.	227.	240.	250.	258.	270.	279.	286.	293.
1920.00	21.	41.	61.	81.	101.	120.	138.	157.	174.	191.	203.	215.	228.	240.	251.	258.	270.	280.	287.	294.
1921.00	21.	41.	61.	81.	101.	120.	139.	157.	174.	191.	203.	215.	228.	241.	252.	259.	271.	280.	288.	295.
1922.00	21.	41.	62.	82.	101.	121.	139.	157.	175.	192.	204.	216.	229.	242.	252.	260.	272.	281.	289.	296.
1923.00	21.	41.	62.	82.	102.	121.	140.	158.	175.	192.	205.	216.	230.	242.	253.	261.	273.	282.	290.	297.
1924.00	21.	41.	62.	82.	102.	121.	140.	158.	176.	193.	205.	217.	230.	243.	254.	262.	274.	283.	290.	298.

Pacoima Dam Valve #3 Rating Table - 30" Hollow Jet Valve

PACOIMA DAM VALVE #3 RATING TABLE - 30" HOLLOW JET VALVE *** RATING TABLE EFFECTIVE JANUARY 1977 (01-07-77) E, ALVES

RESERVOIR ELEVATION (FFEET)	TABULATED DISCHARGE (CES)																			
	PERCENT VALVE OPENING																			
	5	10	15	20	25	30	35	40	45	50	55	60	65	70	75	80	85	90	95	100
1924.00	21.	41.	62.	82.	102.	121.	140.	158.	176.	193.	205.	217.	230.	243.	254.	262.	274.	283.	290.	298.
1925.00	21.	42.	62.	82.	102.	122.	141.	159.	176.	193.	206.	218.	231.	244.	254.	262.	274.	283.	291.	299.
1926.00	21.	42.	62.	83.	103.	122.	141.	159.	177.	194.	206.	218.	232.	245.	255.	263.	275.	285.	292.	299.
1927.00	21.	42.	67.	83.	103.	122.	141.	160.	177.	194.	207.	219.	232.	245.	256.	264.	276.	285.	293.	300.
1928.00	21.	42.	63.	83.	103.	123.	142.	160.	178.	195.	208.	220.	233.	246.	257.	264.	277.	286.	294.	301.
1929.00	21.	42.	63.	83.	103.	123.	142.	161.	178.	196.	208.	220.	234.	247.	257.	265.	277.	287.	295.	302.
1930.00	21.	42.	63.	84.	104.	123.	142.	161.	179.	196.	209.	221.	234.	247.	258.	266.	278.	288.	295.	303.
1931.00	21.	47.	63.	84.	104.	124.	143.	162.	179.	197.	209.	221.	235.	248.	259.	267.	279.	289.	296.	304.
1932.00	21.	42.	63.	84.	104.	124.	143.	162.	180.	197.	210.	222.	236.	249.	259.	267.	280.	289.	297.	304.
1933.00	21.	43.	64.	84.	105.	124.	144.	162.	180.	198.	210.	223.	236.	249.	260.	268.	281.	290.	298.	305.
1934.00	21.	43.	64.	84.	105.	125.	144.	163.	181.	198.	211.	223.	236.	250.	261.	269.	281.	291.	299.	306.
1935.00	21.	43.	64.	85.	105.	125.	144.	163.	181.	199.	212.	224.	238.	251.	262.	270.	282.	292.	299.	307.
1936.00	21.	43.	64.	85.	105.	125.	145.	164.	182.	199.	212.	224.	238.	251.	262.	270.	283.	293.	300.	308.
1937.00	22.	43.	64.	85.	106.	126.	145.	164.	182.	200.	213.	225.	239.	252.	263.	271.	284.	293.	301.	309.
1938.00	22.	43.	64.	85.	106.	126.	146.	165.	183.	201.	213.	226.	239.	253.	264.	272.	284.	294.	302.	309.
1939.00	22.	43.	65.	86.	106.	126.	146.	165.	183.	201.	214.	226.	240.	253.	264.	273.	285.	295.	303.	310.
1940.00	22.	43.	65.	86.	106.	127.	146.	165.	184.	202.	214.	227.	241.	254.	265.	273.	286.	296.	303.	311.
1941.00	22.	43.	65.	86.	107.	127.	147.	166.	184.	202.	215.	227.	241.	255.	266.	274.	287.	296.	304.	312.
1942.00	22.	44.	65.	86.	107.	127.	147.	166.	185.	203.	216.	228.	242.	255.	267.	275.	287.	297.	305.	312.
1943.00	22.	44.	65.	86.	107.	128.	148.	167.	185.	203.	216.	229.	243.	256.	267.	275.	288.	298.	306.	313.
1944.00	22.	44.	65.	87.	108.	128.	148.	167.	186.	204.	217.	229.	243.	257.	268.	276.	289.	299.	307.	314.
1945.00	22.	44.	66.	87.	108.	128.	148.	168.	186.	204.	217.	230.	244.	257.	269.	277.	290.	300.	307.	315.
1946.00	22.	44.	66.	87.	108.	129.	149.	168.	187.	205.	218.	230.	245.	258.	269.	278.	290.	300.	308.	316.
1947.00	22.	44.	66.	87.	108.	129.	149.	168.	187.	205.	218.	231.	245.	259.	270.	278.	291.	301.	309.	317.
1948.00	22.	44.	66.	88.	109.	129.	149.	169.	188.	206.	219.	232.	246.	259.	271.	279.	292.	302.	310.	318.
1949.00	22.	44.	66.	88.	109.	130.	150.	169.	188.	206.	219.	232.	246.	260.	271.	280.	293.	303.	311.	318.
1950.00	22.	44.	66.	88.	109.	130.	150.	170.	189.	207.	220.	233.	247.	261.	272.	280.	293.	303.	311.	319.

Pacoima Dam Valve #4 Rating Table - 30" Hollow Jet Valve Page 1 of 3

*** RATING TABLE EFFECTIVE JANUARY 1977 (01-07-77) E, ALVES

RESERVOIR ELEVATION (FEET)	PACOIMA DAM VALVE #4 RATING TABLE - 30" HOLLOW JET VALVE																				
	5	10	15	20	25	30	35	40	45	50	55	60	65	70	75	80	85	90	95	100	
	TABULATED DISCHARGE (CFS)																				
	PERCENT VALVE OPENING																				
1851.00	8.	8.	8.	8.	8.	8.	8.	8.	8.	8.	8.	8.	8.	8.	8.	8.	8.	8.	8.	8.	
1852.00	11.	23.	34.	45.	52.	52.	52.	52.	52.	52.	52.	52.	52.	52.	52.	52.	52.	52.	52.	52.	
1853.00	11.	23.	34.	45.	56.	67.	78.	88.	98.	107.	114.	117.	117.	117.	117.	117.	117.	117.	117.	117.	
1854.00	12.	23.	35.	46.	57.	68.	78.	89.	99.	108.	115.	122.	130.	137.	143.	148.	155.	160.	165.	169.	
1855.00	12.	23.	35.	46.	57.	68.	79.	89.	100.	109.	116.	123.	131.	138.	144.	149.	156.	162.	168.	170.	
1856.00	12.	24.	35.	47.	58.	69.	80.	90.	100.	110.	117.	124.	132.	140.	146.	150.	158.	163.	168.	172.	
1857.00	12.	24.	35.	47.	58.	70.	80.	91.	101.	111.	118.	125.	133.	141.	147.	152.	159.	165.	169.	173.	
1858.00	12.	24.	36.	47.	59.	70.	81.	92.	102.	112.	119.	126.	134.	142.	148.	153.	160.	166.	170.	175.	
1859.00	12.	24.	36.	48.	59.	71.	82.	93.	103.	113.	120.	128.	136.	143.	150.	154.	162.	167.	172.	176.	
1860.00	12.	24.	36.	48.	60.	71.	83.	93.	104.	114.	121.	129.	137.	146.	151.	156.	163.	169.	173.	178.	
1861.00	12.	25.	37.	49.	60.	72.	83.	94.	105.	115.	122.	130.	138.	146.	152.	157.	164.	170.	175.	179.	
1862.00	12.	25.	37.	49.	61.	73.	84.	95.	106.	116.	123.	131.	139.	147.	153.	158.	166.	172.	176.	181.	
1863.00	13.	25.	37.	49.	61.	73.	85.	96.	107.	117.	124.	132.	140.	148.	155.	159.	167.	173.	178.	182.	
1864.00	13.	25.	38.	50.	62.	74.	85.	97.	107.	118.	125.	133.	141.	149.	156.	161.	168.	174.	179.	184.	
1865.00	13.	25.	38.	50.	62.	74.	86.	97.	108.	119.	126.	134.	142.	150.	157.	162.	170.	176.	180.	185.	
1866.00	13.	26.	38.	51.	63.	75.	87.	98.	109.	120.	127.	135.	143.	152.	158.	163.	171.	177.	182.	187.	
1867.00	13.	26.	38.	51.	63.	75.	87.	99.	110.	121.	128.	136.	144.	153.	159.	164.	172.	178.	183.	188.	
1868.00	13.	26.	39.	51.	64.	76.	88.	99.	111.	121.	129.	137.	146.	154.	161.	166.	174.	180.	185.	189.	
1869.00	13.	26.	39.	52.	64.	77.	89.	100.	111.	122.	130.	138.	147.	155.	162.	167.	175.	181.	186.	191.	
1870.00	13.	26.	39.	52.	65.	77.	89.	101.	112.	123.	131.	139.	148.	156.	163.	168.	176.	182.	187.	192.	
1871.00	13.	26.	40.	53.	65.	78.	90.	102.	113.	124.	132.	140.	149.	157.	164.	169.	177.	184.	189.	194.	
1872.00	13.	27.	40.	53.	66.	78.	90.	102.	114.	125.	133.	141.	150.	158.	165.	171.	179.	185.	190.	195.	
1873.00	13.	27.	40.	53.	66.	79.	91.	103.	115.	126.	134.	142.	151.	159.	166.	172.	180.	186.	191.	196.	
1874.00	14.	27.	40.	54.	67.	79.	92.	104.	115.	127.	135.	143.	152.	160.	168.	173.	181.	187.	193.	198.	
1875.00	14.	27.	41.	54.	67.	80.	92.	104.	116.	128.	136.	144.	153.	162.	169.	174.	182.	189.	194.	199.	
1876.00	14.	27.	41.	54.	67.	80.	93.	105.	117.	129.	137.	145.	154.	163.	170.	175.	183.	190.	195.	200.	
1877.00	14.	28.	41.	55.	68.	81.	94.	106.	118.	129.	138.	146.	155.	164.	171.	176.	185.	191.	196.	202.	
1878.00	14.	28.	41.	55.	68.	81.	96.	107.	119.	130.	139.	147.	156.	165.	172.	177.	186.	192.	198.	203.	
1879.00	14.	28.	42.	55.	69.	82.	95.	107.	119.	131.	139.	148.	157.	166.	173.	179.	187.	194.	199.	204.	
1880.00	14.	28.	42.	56.	69.	82.	95.	108.	120.	132.	140.	149.	158.	167.	174.	180.	188.	195.	200.	205.	
1881.00	14.	28.	42.	56.	70.	83.	96.	109.	121.	133.	141.	149.	159.	168.	175.	181.	189.	196.	201.	207.	
1882.00	14.	28.	43.	56.	70.	83.	97.	109.	122.	134.	142.	150.	160.	169.	176.	182.	191.	197.	203.	208.	
1883.00	14.	28.	43.	57.	71.	84.	97.	110.	122.	134.	143.	151.	161.	170.	177.	184.	192.	199.	204.	209.	
1884.00	14.	29.	43.	57.	71.	85.	98.	111.	123.	135.	144.	152.	162.	171.	179.	184.	193.	200.	205.	210.	
1885.00	15.	29.	43.	57.	71.	85.	98.	111.	124.	136.	145.	153.	163.	172.	180.	185.	194.	201.	206.	212.	
1886.00	15.	29.	44.	58.	72.	86.	99.	112.	124.	137.	146.	154.	164.	173.	181.	186.	195.	202.	208.	213.	
1887.00	15.	29.	44.	58.	72.	86.	99.	113.	125.	137.	146.	155.	165.	174.	182.	187.	196.	203.	209.	214.	
1888.00	15.	29.	44.	58.	73.	86.	100.	113.	126.	138.	147.	156.	166.	175.	183.	188.	197.	204.	210.	215.	
1889.00	15.	30.	44.	59.	73.	87.	101.	114.	127.	139.	148.	157.	167.	176.	184.	190.	199.	206.	211.	217.	

Pacoima Dam Valve #4 Rating Table - 30" Hollow Jet Valve

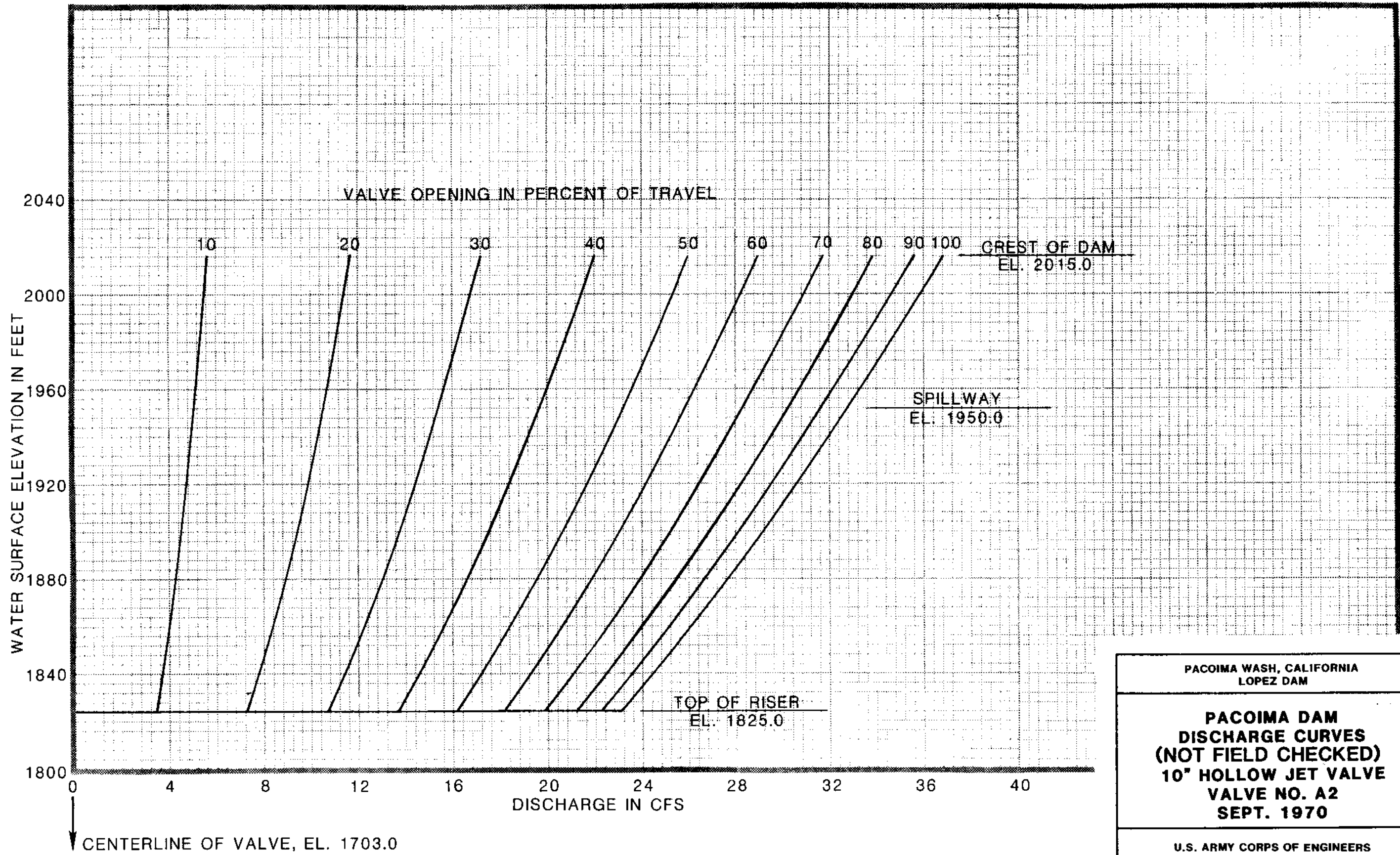
PACOIMA DAM VALVE #4 RATING TABLE - 30" HOLLOW JFT VALVE *** RATING TABLE EFFECTIVE JANUARY 1977 (01-07-77) F. ALVES

RESERVOIR ELEVATION (FEET)	TABULATED DISCHARGE (CFS)																			
	5	10	15	20	25	30	35	40	45	50	55	60	65	70	75	80	85	90	95	100
1889.00	15.	30.	44.	59.	73.	87.	101.	114.	127.	139.	148.	157.	167.	176.	184.	190.	199.	206.	211.	217.
1890.00	15.	30.	45.	59.	73.	87.	101.	114.	127.	140.	149.	158.	167.	177.	185.	191.	200.	207.	212.	218.
1891.00	15.	30.	45.	59.	74.	88.	102.	115.	128.	141.	150.	158.	168.	178.	186.	192.	201.	208.	214.	219.
1892.00	15.	30.	45.	60.	74.	88.	102.	116.	129.	141.	150.	159.	169.	179.	187.	193.	202.	209.	215.	220.
1893.00	15.	30.	45.	60.	75.	89.	103.	116.	129.	142.	151.	160.	170.	180.	188.	194.	203.	210.	216.	221.
1894.00	15.	30.	46.	60.	75.	89.	103.	117.	130.	143.	152.	161.	171.	181.	189.	195.	204.	211.	217.	223.
1895.00	15.	31.	46.	61.	75.	90.	104.	118.	131.	144.	153.	162.	172.	182.	190.	196.	205.	212.	218.	224.
1896.00	15.	31.	46.	61.	76.	90.	104.	118.	132.	144.	154.	163.	173.	183.	191.	197.	206.	213.	219.	225.
1897.00	16.	31.	46.	61.	76.	91.	105.	119.	132.	145.	154.	164.	174.	184.	192.	200.	207.	215.	220.	226.
1898.00	16.	31.	47.	62.	77.	91.	106.	119.	133.	146.	155.	164.	175.	185.	193.	200.	208.	216.	222.	227.
1899.00	16.	31.	47.	62.	77.	92.	106.	120.	134.	147.	156.	165.	176.	186.	194.	200.	209.	217.	223.	228.
1900.00	16.	31.	47.	62.	77.	92.	107.	121.	134.	147.	157.	166.	176.	187.	195.	201.	210.	218.	224.	230.
1901.00	16.	32.	47.	63.	78.	93.	107.	121.	135.	148.	158.	167.	177.	187.	196.	202.	212.	219.	225.	231.
1902.00	16.	32.	47.	63.	78.	93.	108.	122.	136.	149.	158.	168.	178.	188.	197.	203.	213.	220.	226.	232.
1903.00	16.	32.	48.	63.	79.	94.	108.	122.	136.	150.	159.	169.	179.	189.	198.	204.	214.	221.	227.	233.
1904.00	16.	32.	48.	64.	79.	94.	109.	123.	137.	150.	160.	169.	180.	190.	199.	205.	215.	222.	228.	234.
1905.00	16.	32.	48.	64.	79.	94.	109.	124.	138.	151.	161.	170.	181.	191.	200.	206.	216.	223.	229.	235.
1906.00	16.	32.	48.	64.	80.	95.	110.	124.	138.	152.	161.	171.	182.	192.	201.	207.	217.	224.	230.	236.
1907.00	16.	33.	49.	64.	80.	95.	110.	125.	139.	152.	162.	172.	183.	193.	201.	208.	218.	225.	232.	238.
1908.00	16.	33.	49.	65.	80.	96.	111.	125.	139.	153.	163.	173.	183.	194.	202.	209.	219.	226.	233.	239.
1909.00	16.	33.	49.	65.	81.	96.	111.	126.	140.	154.	164.	174.	184.	195.	203.	210.	220.	227.	234.	240.
1910.00	17.	33.	49.	65.	81.	97.	112.	127.	141.	155.	164.	174.	185.	196.	204.	211.	221.	229.	235.	241.
1911.00	17.	33.	49.	66.	82.	97.	112.	127.	141.	155.	165.	175.	186.	197.	205.	212.	222.	230.	236.	242.
1912.00	17.	33.	50.	66.	82.	98.	113.	128.	142.	156.	166.	176.	187.	197.	206.	213.	223.	231.	237.	243.
1913.00	17.	33.	50.	66.	82.	98.	113.	128.	143.	157.	167.	177.	188.	198.	207.	215.	224.	232.	238.	244.
1914.00	17.	34.	50.	67.	83.	98.	114.	129.	143.	157.	167.	177.	188.	199.	208.	215.	225.	233.	239.	245.
1915.00	17.	34.	50.	67.	83.	99.	114.	129.	144.	158.	168.	178.	189.	200.	209.	215.	226.	234.	240.	246.
1916.00	17.	34.	51.	67.	83.	99.	115.	130.	145.	159.	169.	179.	190.	201.	210.	216.	227.	235.	241.	247.
1917.00	17.	34.	51.	67.	84.	100.	115.	130.	145.	159.	170.	180.	191.	202.	211.	217.	228.	236.	242.	248.
1918.00	17.	34.	51.	68.	84.	100.	116.	131.	146.	160.	170.	180.	192.	203.	212.	218.	229.	237.	243.	249.
1919.00	17.	34.	51.	68.	84.	101.	116.	132.	146.	161.	171.	181.	193.	203.	212.	219.	230.	238.	244.	251.
1920.00	17.	34.	51.	68.	85.	101.	117.	132.	147.	161.	172.	182.	193.	204.	213.	220.	231.	239.	245.	252.
1921.00	17.	35.	52.	69.	85.	101.	117.	133.	148.	162.	173.	183.	194.	205.	214.	221.	232.	240.	246.	253.
1922.00	17.	35.	52.	69.	86.	102.	118.	133.	148.	163.	173.	183.	195.	206.	215.	222.	232.	241.	247.	254.
1923.00	17.	35.	52.	69.	86.	102.	118.	134.	149.	163.	174.	184.	196.	207.	216.	223.	233.	242.	248.	255.
1924.00	18.	35.	52.	69.	86.	103.	119.	134.	149.	164.	175.	185.	197.	208.	217.	224.	234.	243.	249.	256.

Pacoima Dam Valve #4 Rating Table - 30" Hollow Jet Valve Page 3 of 3

PACOIMA DAM VALVE #4 RATING TABLE - 30" HOLLOW JET VALVE *** RATING TABLE EFFECTIVE JANUARY 1977 (01-07-77) E, ALVFS

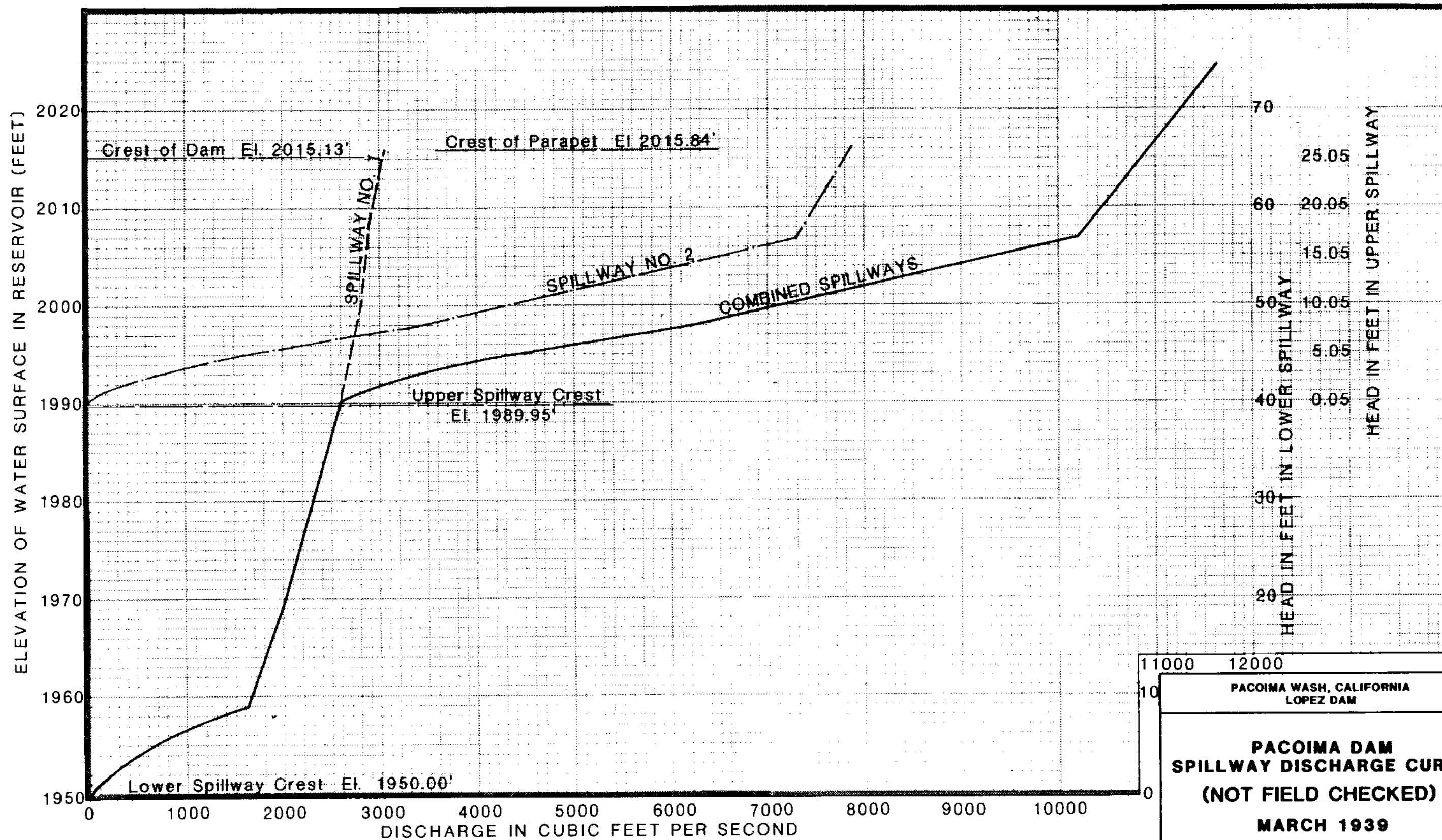
RESERVOIR ELEVATION (FEET)	LABULATED DISCHARGE (CES)																			
	5	10	15	20	25	30	35	40	45	50	55	60	65	70	75	80	85	90	95	100
1924.00	18.	36.	52.	69.	86.	103.	119.	134.	149.	164.	175.	185.	197.	208.	217.	224.	234.	243.	249.	256.
1925.00	18.	35.	53.	70.	87.	103.	119.	135.	150.	165.	175.	186.	197.	209.	218.	225.	235.	244.	250.	257.
1926.00	18.	35.	53.	70.	87.	103.	120.	135.	151.	165.	176.	186.	198.	209.	219.	226.	236.	245.	251.	258.
1927.00	18.	35.	53.	70.	87.	104.	120.	136.	151.	166.	177.	187.	199.	210.	220.	226.	237.	246.	252.	259.
1928.00	18.	35.	53.	71.	88.	104.	121.	136.	152.	167.	177.	188.	200.	211.	220.	227.	238.	247.	253.	260.
1929.00	18.	36.	53.	71.	88.	105.	121.	137.	152.	167.	178.	189.	200.	212.	221.	228.	239.	247.	254.	261.
1930.00	18.	36.	54.	71.	88.	105.	122.	138.	153.	168.	179.	189.	201.	213.	222.	229.	240.	248.	255.	262.
1931.00	18.	36.	54.	71.	89.	106.	122.	138.	154.	169.	180.	190.	202.	213.	223.	230.	241.	249.	256.	263.
1932.00	18.	36.	54.	72.	89.	106.	122.	139.	154.	169.	180.	191.	203.	214.	224.	231.	242.	250.	257.	264.
1933.00	18.	36.	54.	72.	89.	106.	123.	139.	155.	170.	181.	192.	204.	215.	225.	232.	243.	251.	258.	265.
1934.00	18.	36.	54.	72.	90.	107.	123.	140.	155.	171.	182.	192.	204.	216.	225.	233.	244.	252.	259.	266.
1935.00	18.	37.	55.	72.	90.	107.	124.	140.	156.	171.	182.	193.	205.	217.	226.	233.	245.	253.	260.	267.
1936.00	18.	37.	55.	73.	90.	108.	124.	141.	157.	172.	183.	194.	206.	218.	227.	234.	246.	254.	261.	268.
1937.00	18.	37.	55.	73.	91.	108.	125.	141.	157.	172.	184.	194.	207.	219.	228.	235.	246.	255.	262.	269.
1938.00	19.	37.	55.	73.	91.	108.	125.	142.	158.	173.	184.	195.	207.	219.	229.	236.	247.	256.	263.	270.
1939.00	19.	37.	55.	73.	91.	109.	126.	142.	158.	174.	185.	196.	208.	220.	230.	237.	248.	257.	264.	271.
1940.00	19.	37.	56.	74.	92.	109.	126.	143.	159.	174.	186.	197.	209.	221.	230.	238.	249.	258.	265.	272.
1941.00	19.	37.	56.	74.	92.	109.	127.	143.	159.	175.	186.	197.	210.	221.	231.	239.	250.	259.	266.	273.
1942.00	19.	37.	56.	74.	92.	110.	127.	144.	160.	176.	187.	198.	210.	222.	232.	239.	251.	260.	267.	274.
1943.00	19.	38.	56.	75.	93.	110.	127.	144.	160.	176.	188.	199.	211.	223.	233.	240.	252.	261.	268.	275.
1944.00	19.	38.	56.	75.	93.	111.	128.	145.	161.	177.	188.	199.	212.	224.	234.	241.	253.	261.	269.	276.
1945.00	19.	38.	57.	75.	93.	111.	128.	145.	162.	177.	189.	200.	213.	225.	235.	242.	253.	262.	270.	277.
1946.00	19.	38.	57.	75.	94.	111.	129.	146.	162.	178.	190.	201.	213.	225.	235.	243.	254.	263.	271.	278.
1947.00	19.	38.	57.	76.	94.	112.	129.	146.	163.	179.	190.	201.	214.	226.	236.	244.	255.	264.	271.	278.
1948.00	19.	38.	57.	76.	94.	112.	130.	147.	163.	179.	191.	202.	215.	227.	237.	244.	256.	265.	272.	279.
1949.00	19.	38.	57.	76.	95.	113.	130.	147.	164.	180.	191.	203.	215.	228.	238.	245.	257.	266.	273.	280.
1950.00	19.	38.	58.	76.	95.	113.	131.	148.	164.	180.	192.	203.	216.	228.	239.	246.	258.	267.	274.	281.



PACOIMA WASH, CALIFORNIA
LOPEZ DAM

**PACOIMA DAM
DISCHARGE CURVES
(NOT FIELD CHECKED)
10" HOLLOW JET VALVE
VALVE NO. A2
SEPT. 1970**

U.S. ARMY CORPS OF ENGINEERS
LOS ANGELES DISTRICT



Lower Spillway Crest El. 1950.00' = U.S.C. & G.S. El. 1949.98'
 Camp Book 4, page 178

11000	12000
PACOIMA WASH, CALIFORNIA LOPEZ DAM	
PACOIMA DAM SPILLWAY DISCHARGE CURVE (NOT FIELD CHECKED) MARCH 1939	
U.S. ARMY CORPS OF ENGINEERS LOS ANGELES DISTRICT	

DISCHARGE IN CUBIC FEET PER SECOND										
Gage Height (feet)	0.00	0.01	0.02	0.03	0.04	0.05	0.06	0.07	0.08	0.09
.0	0	0.6	1.2	1.8	2.4	3.0	3.6	4.2	4.8	5.4
.1	6.0	6.7	7.4	8.1	8.8	9.5	10.2	10.9	11.6	12.3
.2	13.0	13.7	14.4	15.1	15.8	16.5	17.2	17.9	18.6	19.3
.3	20.0	20.8	21.6	22.4	23.2	24.0	24.8	25.6	26.4	27.2
.4	28.0	28.8	29.6	30.4	31.2	32.0	32.8	33.6	34.4	35.2
.5	36.0	36.8	37.7	38.5	39.4	40.2	41.1	41.9	42.8	43.6
.6	44.5	45.3	46.2	47.0	47.9	48.7	49.6	50.4	51.3	52.1
.7	53.0	53.9	54.8	55.7	56.6	57.5	58.4	59.3	60.2	61.1
.8	62.0	62.9	63.8	64.7	65.6	66.5	67.4	68.3	69.2	70.1
.9	71.0	71.9	72.9	73.8	74.8	75.7	76.7	77.6	78.6	79.5
1.0	80.5	81.4	82.4	83.3	84.3	85.2	86.2	87.1	88.1	89.0
1.1	90.0	91.0	92.0	93.0	94.0	95.0	96.0	97.0	98.0	99.0
1.2	100.0	101.0	102.0	103.0	104.0	105.0	106.0	107.0	108.0	109.0
1.3	110.0	111.0	112.0	113.0	114.0	115.0	116.0	117.0	118.0	119.0
1.4	120.0	121.0	122.0	123.0	124.0	125.0	126.0	127.0	128.0	129.0
1.5	130.0	131.1	132.2	133.3	134.4	135.5	136.6	137.7	138.8	139.9
1.6	141.0	142.1	143.2	144.3	145.4	146.5	147.6	148.7	149.8	150.9
1.7	152.0	153.0	154.0	155.0	156.0	157.0	158.0	159.0	160.0	161.0
1.8	162.0	163.1	164.2	165.3	166.4	167.5	168.6	169.7	170.8	171.9
1.9	173.0	174.1	175.2	176.3	177.4	178.5	179.6	180.7	181.8	182.9
2.0	184.0	185.3	186.6	187.9	189.2	190.5	191.8	193.1	194.4	195.7
2.1	197.0	198.3	199.6	200.9	202.2	203.5	204.8	206.1	207.4	208.7
2.2	210.0	211.3	212.6	213.9	215.2	216.5	217.8	219.1	220.4	221.7
2.3	223.0	224.4	225.8	227.2	228.6	230.0	231.4	232.8	234.2	235.6
2.4	237.0	238.5	240.0	241.5	243.0	244.5	246.0	247.5	249.0	250.5
2.5	252.0	253.6	255.2	256.8	258.4	260.0	261.6	263.2	264.8	266.4
2.6	268.0	269.7	271.4	273.1	274.8	276.5	278.2	279.9	281.6	283.3
2.7	285.0	286.7	288.4	290.1	291.8	293.5	295.2	296.9	298.6	300.3
2.8	302.0	303.7	305.4	307.1	308.8	310.5	312.2	313.9	315.6	317.3
2.9	319.0	320.7	322.4	324.1	325.8	327.5	329.2	330.9	332.6	334.3
3.0	336.0	337.8	339.6	341.4	343.2	345.0	346.8	348.6	350.4	352.2
3.1	354.0	355.8	357.6	359.4	361.2	363.0	364.8	366.6	368.4	370.2
3.2	372.0	373.9	375.8	377.7	379.6	381.5	383.4	385.3	387.2	389.1
3.3	391.0	392.9	394.8	396.7	398.6	400.5	402.4	404.3	406.2	408.1
3.4	410.0	412.0	414.0	416.0	418.0	420.0	422.0	424.0	426.0	428.0
3.5	430.0	432.0	434.0	436.0	438.0	440.0	442.0	444.0	446.0	448.0
3.6	450.0	452.0	454.0	456.0	458.0	460.0	462.0	464.0	466.0	468.0
3.7	470.0	472.0	474.0	476.0	478.0	480.0	482.0	484.0	486.0	488.0
3.8	490.0	492.1	494.2	496.3	498.4	500.5	502.6	504.7	506.8	508.9
3.9	511.0	513.1	515.2	517.3	519.4	521.5	523.6	525.7	527.8	529.9
4.0	532.0	534.2	536.4	538.6	540.8	543.0	545.2	547.4	549.6	551.8
4.1	554.0	556.3	558.6	560.9	563.2	565.5	567.8	570.1	572.4	574.7
4.2	577.0	579.3	581.6	583.9	586.2	588.5	590.8	593.1	595.4	597.7
4.3	600.0	602.3	604.6	606.9	609.2	611.5	613.8	616.1	618.4	620.7
4.4	623.0	625.3	627.6	629.9	632.2	634.5	636.8	639.1	641.4	643.7
4.5	646.0	648.3	650.6	652.9	655.2	657.5	659.8	662.1	664.4	666.7
4.6	669.0	671.4	673.8	676.2	678.6	681.0	683.4	685.8	688.2	690.6
4.7	693.0	695.4	697.8	700.2	702.6	705.0	707.4	709.8	712.2	714.6
4.8	717.0	719.4	721.8	724.2	726.6	729.0	731.4	733.8	736.2	738.6
4.9	741.0	743.4	745.8	748.2	750.6	753.0	755.4	757.8	760.2	762.6
5.0	765.0	767.4	769.8	772.2	774.6	777.0	779.4	781.8	784.2	786.6
5.1	789.0	791.4	793.8	796.2	798.6	801.0	803.4	805.8	808.2	810.6
5.2	813.0	815.4	817.8	820.2	822.6	825.0	827.4	829.8	832.2	834.6
5.3	837.0	839.5	842.0	844.5	847.0	849.5	852.0	854.5	857.0	859.5
5.4	862.0	864.5	867.0	869.5	872.0	874.5	877.0	879.5	882.0	884.5
5.5	887.0	889.5	892.0	894.5	897.0	899.5	902.0	904.5	907.0	909.5
5.6	912.0	914.6	917.2	919.8	922.4	925.0	927.6	930.2	932.8	935.4
5.7	938.0	940.6	943.2	945.8	948.4	951.0	953.6	956.2	958.8	961.4
5.8	964.0	966.6	969.2	971.8	974.4	977.0	979.6	982.2	984.8	987.4
5.9	990.0	992.6	995.2	997.8	1000.4	1003.0	1005.6	1008.2	1010.8	1013.4
6.0	1016.0	1018.6	1021.2	1023.8	1026.4	1029.0	1031.6	1034.2	1036.8	1039.4
6.1	1042.0	1044.6	1047.2	1049.8	1052.4	1055.0	1057.6	1060.2	1062.8	1065.4
6.2	1068.0	1070.6	1073.2	1075.8	1078.4	1081.0	1083.6	1086.2	1088.8	1091.4
6.3	1094.0	1096.6	1099.2	1101.8	1104.4	1107.0	1109.6	1112.2	1114.8	1117.4
6.4	1120.0	1122.6	1125.2	1127.8	1130.4	1133.0	1135.6	1138.2	1140.8	1143.4

Note: Rating Table provided by LACDPW.
Pacoima Creek Flume below Pacoima Dam,
Sta. No. F118B-R, Rating Curve 44I.
Does not include Spillway Flow

PACOIMA WASH, CALIFORNIA LOPEZ DAM
PACOIMA CREEK FLUME BELOW PACOIMA DAM RATING TABLE
U.S. ARMY CORPS OF ENGINEERS LOS ANGELES DISTRICT