



DEPARTMENT OF THE ARMY  
SOUTH PACIFIC DIVISION, CORPS OF ENGINEERS

630 Sansome Street, Room 720  
San Francisco, California 94111-2206

REPLY TO  
ATTENTION OF:

DEC 28 1990

CESPD-ED-W (1110-2-240)

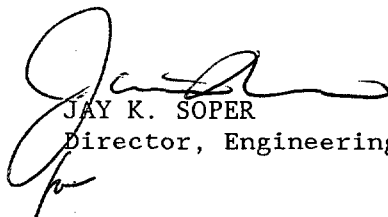
MEMORANDUM FOR Commander, U.S. Army Corps of Engineers, ATTN: CECW-EH-W,  
20 Massachusetts Avenue, NW, Washington DC 20314-1000

SUBJECT: Updating Hansen Dam Water Control Manual

1. Enclosed is the updated Hansen Dam Water Control Manual for file purposes.
2. If you have any questions on the above, please contact Mr. Jack Hsu at FTS 465-1550 or commercial (415) 705-1550.

FOR THE COMMANDER:

Encl

  
JAY K. SOPER  
Director, Engineering

WATER CONTROL MANUAL

HANSEN DAM

TUJUNGA WASH, LOS ANGELES COUNTY, CALIFORNIA

NOVEMBER 1990

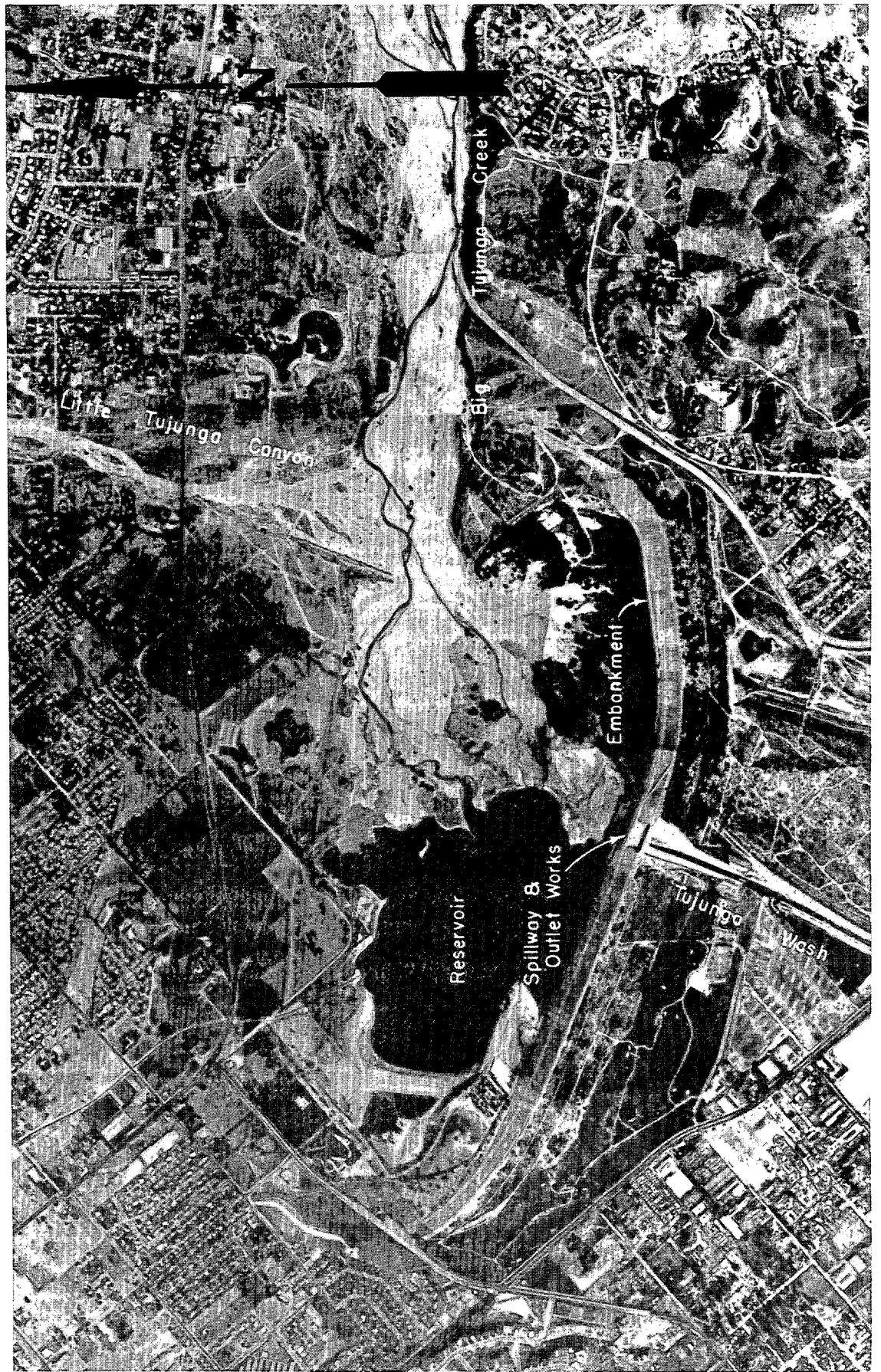
Prepared

by

U.S. Army Corps of Engineers

Los Angeles District

Reservoir Regulation Section



HANSEN FLOOD CONTROL DAM AND RESERVOIR (JAN 1969)

## NOTICE TO USERS OF MANUAL

Regulations specify that this Water Control Manual be published in loose leaf form, and only those sections, or parts thereof, requiring changes will be revised and printed. Therefore, this copy should be preserved in good condition so that inserts can be made to keep the manual current.

## EMERGENCY REGULATION ASSISTANCE PROCEDURES

In the event that unusual conditions arise, the Reservoir Regulation Section, Los Angeles District Office can be contacted by telephone at 213-894-4756. See plate 9-1 for other important telephone numbers for reservoir regulation assistance.

## ORGANIZATION OF MANUAL

Indicated by Roman Numerals, this manual is divided into chapters. Within each chapter are numbered paragraphs, which are major topics discussed in the chapter. Figures cited in the text of each chapter are presented at the end of that chapter. Plates cited are located in the back of the manual. Exhibits are included in the back as appendices.