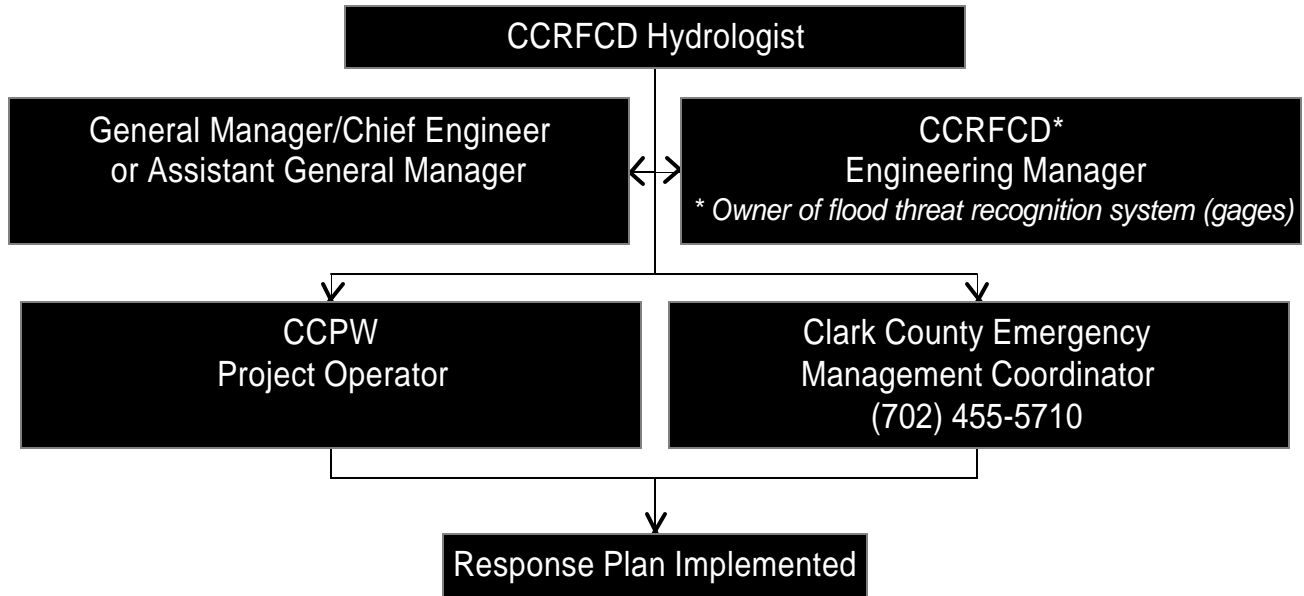


**Table I-1  
Chain of Command for Corps of Engineers, Los Angeles District  
Reservoir Operations Decisions**



\* The Corps' Reservoir Operation Center (ROC) can be reached at (213) 452-3623. This number also allows callers to page ROC personnel when the ROC is not open.

**Table I-2  
Response Plan Implementation at Blue Diamond Detention Basin**



Note: Arrowed lines denote communication sequence during flood event.

For more information or questions, please contact agency personnel at (702) 455-3139.

**Table I-3  
Blue Diamond Detention Basin Area Table<sup>1</sup>**

<b>Elevation (ft)</b>	<b>Area (Ac)</b>	<b>Elevation (ft)</b>	<b>Area (Ac)</b>	<b>Elevation (ft)</b>	<b>Area (Ac)</b>
2917.62	0.0	2938	34.0	2959	89.2
2918	0.0	2939	36.0	2960	92.6
2919	0.0	2940	38.1	2961	96.0
2920	0.2	2941	40.2	2962	98.9
2921	1.0	2942	42.3	2963	102.5
2922	1.8	2943	45.0	2964	107.6
2923	2.8	2944	47.7	2965	110.7
2924	4.0	2945	50.5	2966	114.2
2925	5.3	2946	53.2	<b>2966.24</b>	<b>116.0</b>
2926	6.8	2947	55.7	2967	117.5
2927	8.5	2948	58.6	2968	121.5
2928	10.3	2949	61.4	2969	124.9
2929	12.4	2950	64.1	2970	128.4
2930	14.6	2951	66.8	2971	132.0
2931	16.9	2952	69.4	2972	135.1
2932	19.2	2953	72.4	2973	139.1
2933	21.8	2954	75.0	2974	142.6
2934	24.4	2955	77.3	2975	145.6
2935	27.0	2956	79.8	2976	148.6
2936	29.6	2957	82.3	2977	151.1
2937	31.8	2958	85.8		

1. Based on the Final Design. This supersedes the Design Area Table contained in Design Memorandum -- Blue Diamond Detention Basin -- April 1998. Spillway crest is at 2966.24 ft NAVD88.

**Table I-3a**  
**Blue Diamond Detention Basin Area Table<sup>1</sup>**  
**(Metric Unit Version)**

<b>Elevation (m)</b>	<b>Area (m<sup>2</sup>)</b>	<b>Elevation (m)</b>	<b>Area (m<sup>2</sup>)</b>
889.33	0	898.5	237,261
889.5	0	899.0	249,920
890.0	281	899.5	270,437
890.5	4,463	900.0	292,830
891.0	11,656	900.5	304,685
891.5	17,499	901.0	322,932
892.0	28,553	901.5	335,976
892.5	42,221	902.0	362,184
893.0	52,223	902.5	388,359
893.5	69,580	903.0	402,957
894.0	88,355	903.5	436,235
894.5	100,839	904.0	451,888
895.0	120,710	<b>904.11</b>	<b>469,549</b>
895.5	137,608	904.5	477,861
896.0	147,422	905.0	506,614
896.5	163,497	905.5	523,096
897.0	181,932	906.0	548,969
897.5	194,832	906.5	577,284
898.0	215,823	907.0	592,160

1. Based on the Final Design. This supersedes the Design Area Table contained in Design Memorandum -- Blue Diamond Detention Basin -- April 1998. The spillway crest is at 904.110 m NAVD88.

**Table I-4  
Blue Diamond Detention Basin Storage Table<sup>1</sup>**

<b>Elevation (ft)</b>	<b>Storage (Ac-Ft)</b>	<b>Elevation (ft)</b>	<b>Storage (Ac-Ft)</b>	<b>Elevation (ft)</b>	<b>Storage (Ac-Ft)</b>
2917.62	0.0	2938	272.3	2959	1563.1
2918	0.0	2939	308.3	2960	1655.7
2919	0.0	2940	346.4	2961	1751.6
2920	0.2	2941	386.6	2962	1850.6
2921	1.2	2942	429.0	2963	1953.1
2922	3.0	2943	473.9	2964	2060.7
2923	5.8	2944	521.6	2965	2171.4
2924	9.8	2945	572.2	2966	2285.6
2925	15.1	2946	625.3	2966.14	2302.0
2926	21.9	2947	681.1	<b>2966.24</b>	<b>2312.8</b>
2927	30.3	2948	739.7	2967	2403.1
2928	40.7	2949	801.1	2968	2524.5
2929	53.0	2950	865.1	2969	2649.5
2930	67.6	2951	931.9	2970	2777.9
2931	84.5	2952	1001.3	2971	2909.9
2932	103.7	2953	1073.7	2972	3045.0
2933	125.5	2954	1148.7	2973	3184.1
2934	149.9	2955	1226.1	2974	3326.7
2935	176.9	2956	1305.9	2975	3472.4
2936	206.5	2957	1388.2	2976	3620.9
2937	238.3	2958	1473.9	2977	3772.0

1. Based on the Final Design. This supersedes the Design Storage Table contained in Design Memorandum -- Blue Diamond Detention Basin -- April 1998. The spillway crest is at 2966.24 ft NAVD88.

**Table I-4a**  
**Blue Diamond Detention Basin Storage Table<sup>1</sup>**  
**(Metric Unit Version)**

<b>Elevation (m)</b>	<b>Storage (m<sup>3</sup>)</b>	<b>Elevation (m)</b>	<b>Storage (m<sup>3</sup>)</b>
889.33	0	899.0	999,386
889.5	0	899.5	1,149,557
890.0	86	900.0	1,324,405
890.5	1,868	900.5	1,428,283
891.0	7,456	901.0	1,610,762
891.5	13,755	901.5	1,733,978
892.0	28,564	902.0	1,938,950
892.5	50,824	902.5	2,160,648
893.0	69,720	903.0	2,305,552
893.5	107,292	903.5	2,551,517
894.0	155,423	904.0	2,742,071
894.5	192,015	904.08	2,839,494
895.0	258,785	<b>904.11</b>	<b>2,852,791</b>
895.5	335,834	904.5	2,987,696
896.0	389,257	905.0	3,275,564
896.5	481,133	905.5	3,465,881
897.0	584,603	906.0	3,778,812
897.5	653,806	906.5	4,107,568
898.0	775,254	907.0	4,323,100
898.5	912,387		

1. Based on the Final Design. This supersedes the Design Storage Table in the Design Memorandum -- Blue Diamond Detention Basin -- April 1998. The spillway crest is at 904.110 m NAVD88.

**Table I-5  
Blue Diamond Detention Basin  
Outlet Works Discharge Table**

<b>Elevation (ft, NAVD)</b>	<b>Discharge (cfs)</b>
2917.85	0
2918	11
2919	22
2920	34
2921	49
2922	64
2923	74
2924	80
2925	84
2926	89
2927	94
2928	98
2929	104
2930	109
2931	114
2932	118
2933	122
2934	126
2935	130
2936	134

<b>Elevation (ft, NAVD)</b>	<b>Discharge (cfs)</b>
2937	137
2938	141
2939	144
2940	148
2941	151
2942	154
2943	157
2944	160
2945	163
2946	166
2947	169
2948	172
2949	175
2950	178
2951	181
2952	183
2953	186
2954	188
2955	191
2956	194

<b>Elevation (ft, NAVD)</b>	<b>Discharge (cfs)</b>
2957	196
2958	199
2959	202
2960	204
2961	206
2962	208
2963	210
2964	213
2965	215
2966	217
<b>2966.24</b>	<b>218</b>
2967	220
2968	222
2969	224
2970	226
2971	230
2972	231
2973	231
2974	233

Notes:

1. Refer to Table I-6 for total discharge.
2. Spillway crest is at 2966.24 ft, NAVD88.
3. Discharge values are based on the Final Design. This supersedes the Outlet Works Discharge table contained in Design Memorandum -- Blue Diamond Detention Basin -- April 1998.

**Table I-5a**  
**Blue Diamond Detention Basin**  
**Outlet Works Discharge Table**  
**(Metric Unit Version)**

<b>Elevation Discharge</b>		<b>Elevation Discharge</b>	
<b>(m)</b>	<b>(m<sup>3</sup>/s)</b>	<b>(m)</b>	<b>(m<sup>3</sup>/s)</b>
889.33	0	898.5	4.81
889.5	0.34	899.0	4.97
890.0	0.72	899.5	5.11
890.5	1.46	900.0	5.20
891.0	2.11	900.5	5.33
891.5	2.30	901.0	5.49
892.0	2.52	901.5	5.57
892.5	2.54	902.0	5.73
893.0	2.78	902.5	5.83
893.5	2.98	903.0	5.90
894.0	3.32	903.5	6.04
894.5	3.46	904.0	6.10
895.0	3.59	<b>904.11</b>	<b>6.17</b>
895.5	3.80	904.5	6.24
896.0	4.10	905.0	6.35
896.5	4.28	905.5	6.41
897.0	4.38	906.0	6.52
897.5	4.55	906.5	6.60
898.0	4.71		

Notes:

1. Refer to Table I-6a for total discharge.
2. Spillway crest is at 904.110 m, NAVD88.
3. Discharge values are based on the Final Design. This supersedes the Outlet Works Discharge table contained in Design Memorandum -- Blue Diamond Detention Basin -- April 1998.



**Table I-6  
Blue Diamond Detention Basin  
Outlet Works and Spillway Discharge Table**

<b>Elevation (ft, NAVD)</b>	<b>Outlet Works Discharge (cfs)</b>	<b>Spillway Discharge (cfs)</b>	<b>Total Discharge (cfs)</b>
2966.24	218	0	218
2967	220	4,004	4,224
2968	222	18,447	18,669
2969	224	32,890	33,114
2970	226	47,332	47,558
2971	228	70,940	71,168
2972	231	94,548	94,779
2973	231	124,186	124,417
2974	233	154,530	154,763

Notes:

1. Spillway crest elevation is at 2966.24 ft, NAVD88.
2. Maximum water surface elevation is at 2973.64 ft, NAVD88.
3. Total discharge values are based on the Final Design. This supersedes the Outlet Works and Spillway Discharge table contained in Design Memorandum -- Blue Diamond Detention Basin -- April 1998.

**Table I-6a**  
**Blue Diamond Detention Basin**  
**Outlet Works and Spillway Discharge Table**  
**(Metric Unit Version)**

<b>Elevation (m, NAVD)</b>	<b>Outlet Works Discharge (m<sup>3</sup>/s)</b>	<b>Spillway Discharge (m<sup>3</sup>/s)</b>	<b>Total Discharge (m<sup>3</sup>/s)</b>
904.11	6.17	0	6.17
904.5	6.24	178	184
905.0	6.35	951	958
905.5	6.41	1503	1506
906.0	6.52	2790	2797
906.5	6.60	4376	4382

Notes:

1. Spillway crest elevation is at 904.110 m, NAVD88.
2. Maximum water surface elevation is at 906.36 m, NAVD88.
3. Total discharge values are based on the Final Design. This supersedes the Outlet Works and Spillway Discharge table contained in Design Memorandum -- Blue Diamond Detention Basin -- April 1998.