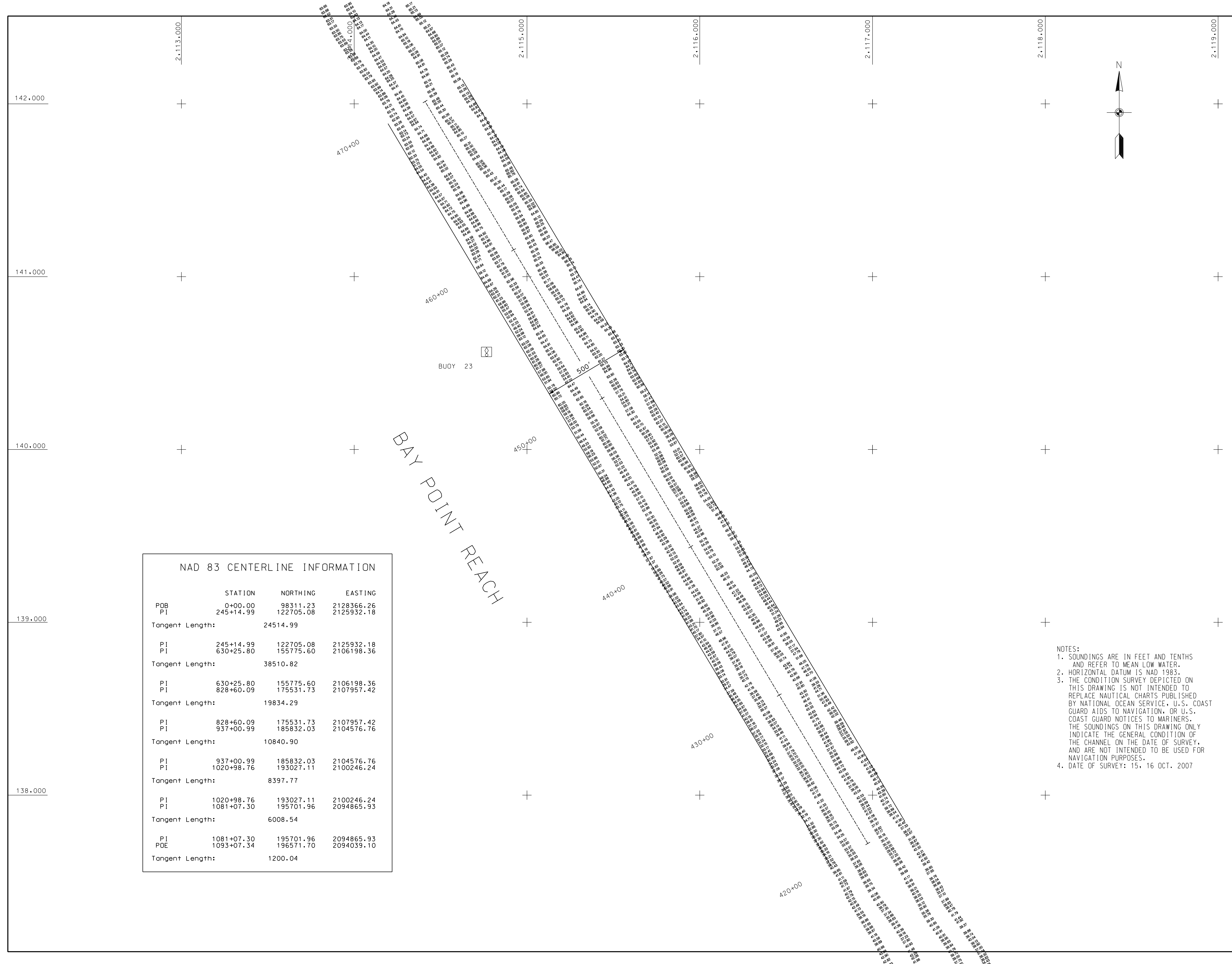
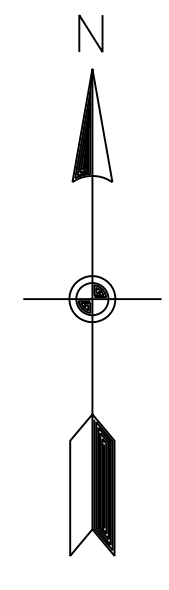


DATE	APPN.	WORK	DESCRIPTION



NAD 83 CENTERLINE INFORMATION

	STATION	NORTHING	EASTING
P0B	0+00.00	98311.23	2128366.26
PI	245+14.99	122705.08	2125932.18
Tangent Length:	24514.99		
PI	245+14.99	122705.08	2125932.18
PI	630+25.80	155775.60	2106198.36
Tangent Length:	38510.82		
PI	630+25.80	155775.60	2106198.36
PI	828+60.09	175531.73	2107957.42
Tangent Length:	19834.29		
PI	828+60.09	175531.73	2107957.42
PI	937+00.99	185832.03	2104576.76
Tangent Length:	10840.90		
PI	937+00.99	185832.03	2104576.76
PI	1020+98.76	193027.11	2100246.24
Tangent Length:	8397.77		
PI	1020+98.76	193027.11	2100246.24
PI	1081+07.30	195701.96	2094865.93
Tangent Length:	6008.54		
PI	1081+07.30	195701.96	2094865.93
PDE	1093+07.34	196571.70	2094039.10
Tangent Length:	1200.04		

NOTES:

1. SOUNDINGS ARE IN FEET AND TENTHS AND REFER TO MEAN LOW WATER.
2. HORIZONTAL DATUM IS NAD 1983.
3. THE CONDITION SURVEY DEPICTED ON THIS DRAWING IS NOT INTENDED TO REPLACE NAUTICAL CHARTS PUBLISHED BY NATIONAL OCEAN SERVICE, U.S. COAST GUARD AIDS TO NAVIGATION, OR U.S. COAST GUARD NOTICES TO MARINERS. THE SOUNDINGS ON THIS DRAWING ONLY INDICATE THE GENERAL CONDITION OF THE CHANNEL ON THE DATE OF SURVEY, AND ARE NOT INTENDED TO BE USED FOR NAVIGATION PURPOSES.
4. DATE OF SURVEY: 15, 16 OCT. 2007

Designed by:	DATE:	OCT. 07
Drawn by:	Design file no:	9190
Checked by:	Drawn by:	MRV
Reviewed by:	Reviewed by:	
Submitted by:	Scale:	1" = 200'

U.S. ARMY ENGINEER DISTRICT
CORPS OF ENGINEERS
CHARLESTON, SOUTH CAROLINA

PORT ROYAL HARBOR
PORT ROYAL - PROFILE LINES
9190
BEAUFORT COUNTY, SOUTH CAROLINA

SHEET REFERENCE NUMBER
SHEET 11 OF 23