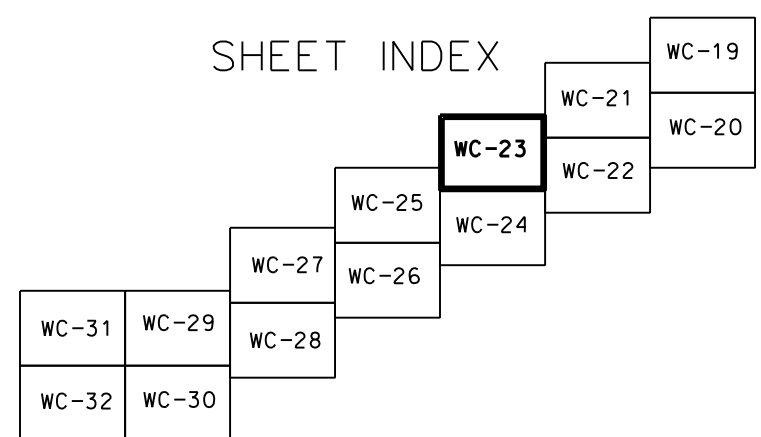


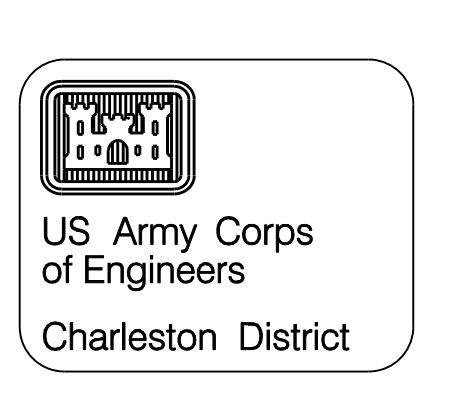
PT. NO.	STATION W/OFFSET	COORDINATES			
		NAD 27		NAD 83	
		EAST (X)	NORTHING (Y)	EAST (X)	NORTHING (Y)
532-00N 300L		2,474,986.35	457,157.58	2,474,999.66	457,314.86
516-00N 300L		2,473,427.82	456,796.44	2,473,441.32	456,953.34
502-00N 300L		2,472,064.15	456,480.54	2,472,077.81	456,637.11
502-00N 300R		2,472,199.52	455,896.07	2,472,213.32	456,052.71
496-20.39N 320L		2,471,444.70	456,357.63	2,471,458.42	456,514.05
496-20.39N 340R		2,471,697.37	455,738.68	2,471,711.24	455,895.20
485-00N 320L		2,470,444.85	455,747.93	2,470,458.79	455,904.13
3-00 185L		2,471,809.22	455,782.71	2,471,823.07	455,939.26
2-98.49 190L		2,471,454.57	456,354.63	2,471,468.29	456,511.05
2-98.49 210L		2,471,434.83	456,351.56	2,471,448.56	456,507.98
12-68.19 210L		2,471,291.58	457,271.44	2,471,305.08	457,427.76
12-68.19 190L		2,471,310.80	457,278.19	2,471,324.29	457,434.51
14-55.27 210L		2,471,236.58	457,367.34	2,471,250.06	457,523.64
14-55.27 190L		2,471,252.15	457,380.43	2,471,265.62	457,536.73
23-20.22 190L		2,470,648.22	457,884.97	2,470,661.60	458,041.08
28-68.22 190L		2,470,191.42	458,004.62	2,470,204.79	458,160.61
28-68.22 160L		2,470,193.72	458,035.12	2,470,207.08	458,191.11
33-76.72 190L		2,469,653.27	457,938.62	2,469,666.69	458,094.47
33-76.72 160L		2,469,660.83	457,969.65	2,469,674.24	458,125.50
37-26.72 190L		2,469,274.14	458,193.75	2,469,278.52	458,349.49
37-26.72 160L		2,469,295.88	458,215.29	2,469,309.25	458,371.03
40-20 190L		2,469,087.63	458,466.59	2,469,100.95	458,622.26
40-20 160L		2,469,112.36	458,483.61	2,469,125.67	458,639.29



NOTES:  
 1. SOUNDINGS ARE IN FEET AND TENTHS AND REFER TO MEAN LOWER LOW WATER.  
 2. HORIZONTAL DATUM IS NAD 1983.  
 3. THE CONDITION SURVEY DEPICTED ON THIS DRAWING IS NOT INTENDED TO REPLACE NAUTICAL CHARTS PUBLISHED BY NATIONAL OCEAN SERVICE, U.S. COAST GUARD AIDS TO NAVIGATION, OR U.S. COAST GUARD NOTICES TO MARINERS. THE SOUNDINGS ON THIS DRAWING ONLY INDICATE THE GENERAL CONDITION OF THE CHANNEL ON THE DATE OF SURVEY, AND ARE NOT INTENDED TO BE USED FOR NAVIGATION PURPOSES.  
 4. DATE OF SURVEY: 23, 24, 30 OCT. 2007

LEGEND

BUILDING	[Symbol]
FENCE	[Symbol]
GUARD RAIL	[Symbol]
TREE LINE	[Symbol]
INDIVIDUAL TREE	[Symbol]
POWER POLE	[Symbol]
LIGHT POLE	[Symbol]
WATER	[Symbol]
WALL	[Symbol]
RETAINING WALL	[Symbol]
SHRUB	[Symbol]
BRUSH-MARSH LINE	[Symbol]
POST	[Symbol]
PAVED ROAD	[Symbol]
UNPAVED ROAD	[Symbol]
NAVAID GREEN	[Symbol]
NAVAID RED	[Symbol]
H&V CONTROL	[Symbol]
U.S. HIGHWAY	[Symbol]
STATE HIGHWAY	[Symbol]
ROAD NUMBER	[Symbol]
ANCHORAGE	[Symbol]
WRECK	[Symbol]
MONUMENT	[Symbol]



NO.	DATE	APPROV.	DESCRIPTION
1	10/23/07		Issue Block Description 1
2	10/24/07		Issue Block Description 2
3	10/24/07		Issue Block Description 3
4	10/24/07		Issue Block Description 4
5	10/24/07		Issue Block Description 5
6	10/24/07		Issue Block Description 6
7	10/24/07		Issue Block Description 7
8	10/24/07		Issue Block Description 8

DATE: 10/23/07
DESIGNER: MRY
CHECKER: MRY
DATE: 10/23/07
PROJECT: 9191
DATE: 10/23/07
SCALE: 1" = 200'

ATLANTIC INTRACOASTAL WATERWAY  
 STA. 482+32N TO STA. 494+12N ANWW  
 STA. 0+45 TO STA. 42+80 JEREMY CREEK  
 GEORGETOWN AND CHARLESTON COUNTIES

...9191S21.DGN 10/31/2007 12:01:26 PM