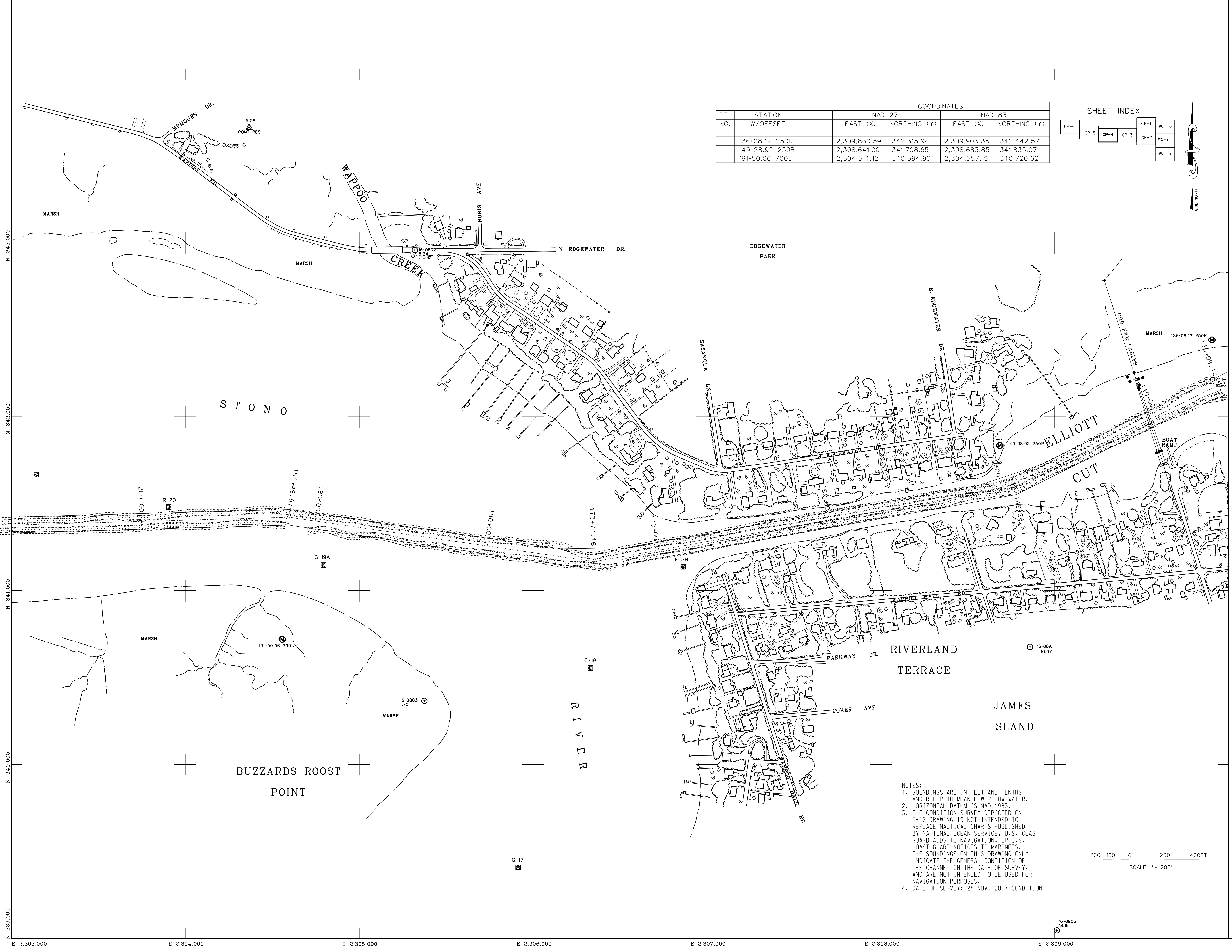
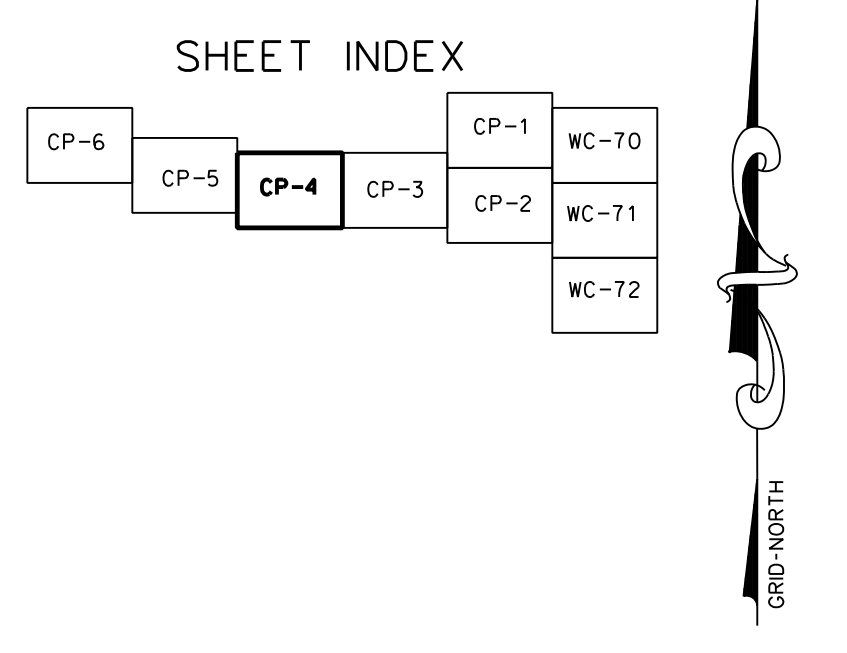
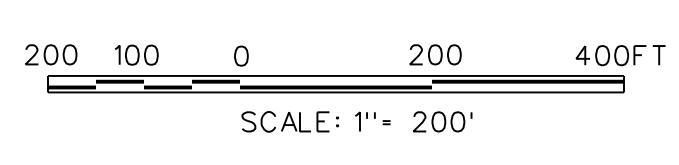


PT. NO.	STATION W/OFFSET	COORDINATES			
		NAD 27		NAD 83	
		EAST (X)	NORTHING (Y)	EAST (X)	NORTHING (Y)
	136+08.17 250R	2,309,860.59	342,315.94	2,309,903.35	342,442.57
	149+28.92 250R	2,308,641.00	341,708.65	2,308,683.85	341,835.07
	191+50.06 700L	2,304,514.12	340,594.90	2,304,557.19	340,720.62



NOTES:
 1. SOUNDINGS ARE IN FEET AND TENTHS AND REFER TO MEAN LOWER LOW WATER. HORIZONTAL DATUM IS NAD 1983.
 2. THE CONDITION SURVEY DEPICTED ON THIS DRAWING IS NOT INTENDED TO REPLACE NAUTICAL CHARTS PUBLISHED BY NATIONAL OCEAN SERVICE, U.S. COAST GUARD AIDS TO NAVIGATION, OR U.S. COAST GUARD NOTICES TO MARINERS. THE SOUNDINGS ON THIS DRAWING ONLY INDICATE THE GENERAL CONDITION OF THE CHANNEL ON THE DATE OF SURVEY, AND ARE NOT INTENDED TO BE USED FOR NAVIGATION PURPOSES.
 4. DATE OF SURVEY: 28 NOV. 2007 CONDITION



Sheet No.	Date	Appr. By	Appr. Date	Description

U.S. ARMY ENGINEER DISTRICT
CORPS OF ENGINEERS
CHARLESTON, SOUTH CAROLINA

Drawn by: MRY
Checked by: [Blank]
Designed by: [Blank]
Date: DEC. 07
Design No.: 9200
Drawing Code: [Blank]
File Name: [Blank]
Drawing Scale: 1" = 200'

ATLANTIC INTRACOASTAL WATERWAY
CHARLESTON TO PORT ROYAL
9200
STA. 135+53 TO STA. 207+49
CHARLESTON, COLLETON AND BEAUFORT COUNTIES
SOUTH CAROLINA

SHEET REFERENCE NUMBER
SHEET 5 OF 68