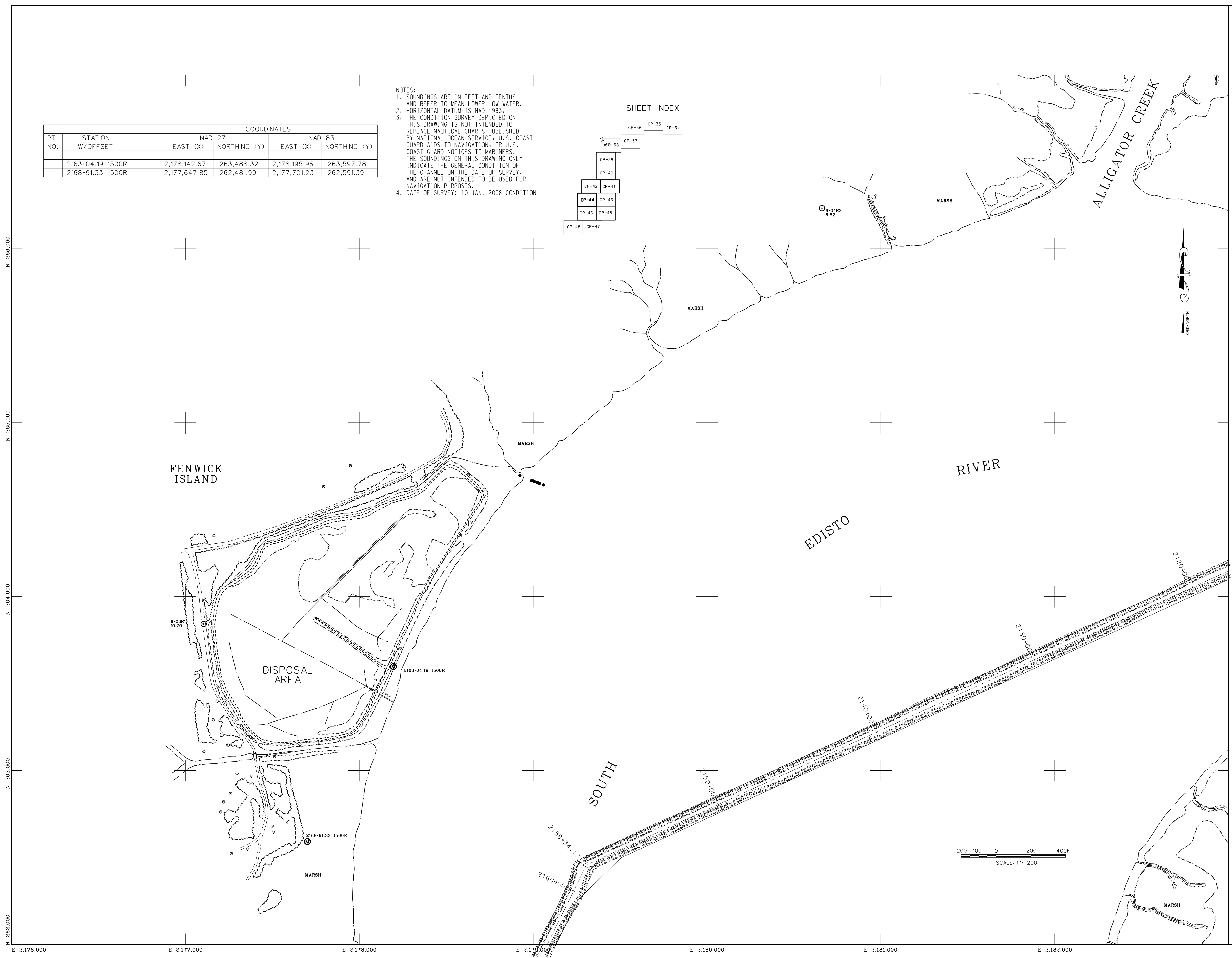
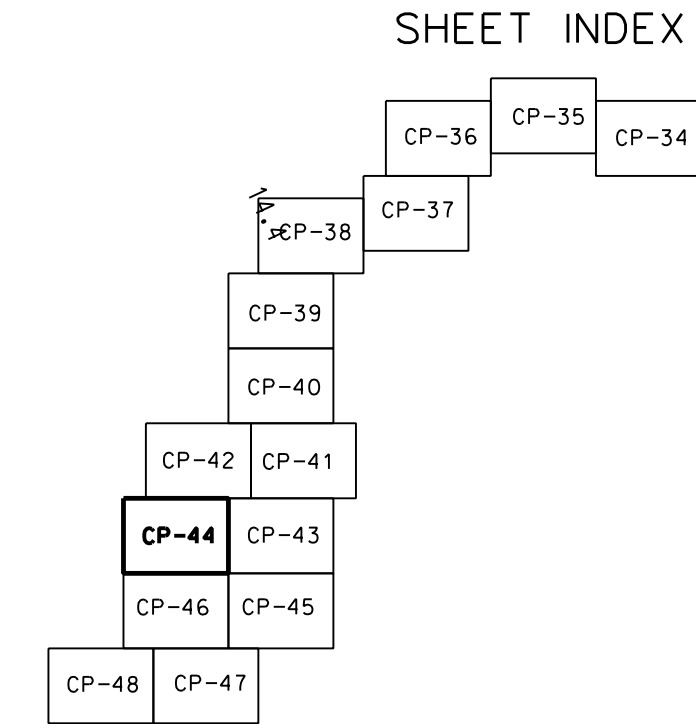


PT. NO.	STATION	COORDINATES			
		NAD 27		NAD 83	
	W/OFFSET	EAST (X)	NORTHING (Y)	EAST (X)	NORTHING (Y)
	2163+04.19 1500R	2,178,142.67	263,488.32	2,178,195.96	263,597.78
	2168+91.33 1500R	2,177,647.85	262,481.99	2,177,701.23	262,591.39

NOTES:  
 1. SOUNDINGS ARE IN FEET AND TENTHS AND REFER TO MEAN LOWER LOW WATER.  
 2. HORIZONTAL DATUM IS NAD 1983.  
 3. THE CONDITION SURVEY DEPICTED ON THIS DRAWING IS NOT INTENDED TO REPLACE NAUTICAL CHARTS PUBLISHED BY NATIONAL OCEAN SERVICE, U.S. COAST GUARD AIDS TO NAVIGATION, OR U.S. COAST GUARD NOTICES TO MARINERS. THE SOUNDINGS ON THIS DRAWING ONLY INDICATE THE GENERAL CONDITION OF THE CHANNEL ON THE DATE OF SURVEY, AND ARE NOT INTENDED TO BE USED FOR NAVIGATION PURPOSES.  
 4. DATE OF SURVEY: 10 JAN. 2008 CONDITION



No.	Date	Appr.	Mark	Description
No. 1	Jan 1	Appr 1	Mark	
No. 2	Jan 2	Appr 2	Mark	
No. 3	Jan 3	Appr 3	Mark	
No. 4	Jan 4	Appr 4	Mark	
No. 5	Jan 5	Appr 5	Mark	
No. 6	Jan 6	Appr 6	Mark	
No. 7	Jan 7	Appr 7	Mark	
No. 8	Jan 8	Appr 8	Mark	
No. 9	Jan 9	Appr 9	Mark	
No. 10	Jan 10	Appr 10	Mark	
No. 11	Jan 11	Appr 11	Mark	
No. 12	Jan 12	Appr 12	Mark	
No. 13	Jan 13	Appr 13	Mark	
No. 14	Jan 14	Appr 14	Mark	
No. 15	Jan 15	Appr 15	Mark	
No. 16	Jan 16	Appr 16	Mark	
No. 17	Jan 17	Appr 17	Mark	
No. 18	Jan 18	Appr 18	Mark	
No. 19	Jan 19	Appr 19	Mark	
No. 20	Jan 20	Appr 20	Mark	

Designed by:	U.S. ARMY ENGINEER DISTRICT
Drawn by:	CHARLESTON, SOUTH CAROLINA
Checked by:	9200
Reviewed by:	STA 217+71 TO STA 2163+43
Submitted by:	CHARLESTON, COLLETON AND BEAUFORT COUNTIES
	SOUTH CAROLINA

ATLANTIC INTRACOASTAL WATERWAY  
 CHARLESTON TO PORT ROYAL  
 9200  
 STA 217+71 TO STA 2163+43  
 CHARLESTON, COLLETON AND BEAUFORT COUNTIES  
 SOUTH CAROLINA

SHEET REFERENCE NUMBER  
 SHEET 42 OF 68