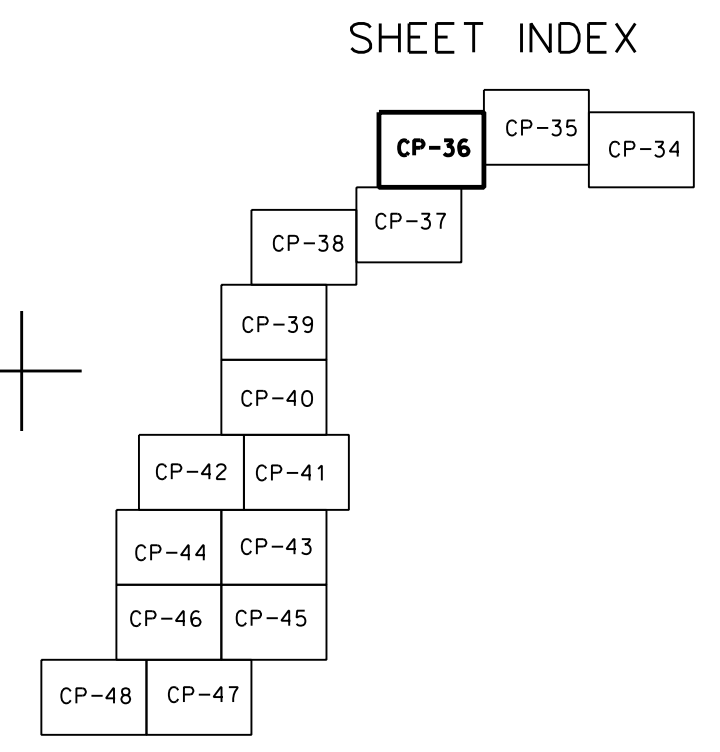


PT. NO.	STATION W/OFFSET	COORDINATES			
		NAD 27		NAD 83	
		EAST (X)	NORTHING (Y)	EAST (X)	NORTHING (Y)
	1727+98.47 250L	2,200,178.48	290,608.36	2,200,229.20	290,720.12
	1734+55.53 250L	2,199,624.44	290,275.70	2,199,675.20	290,387.40
	1743+32.86 250L	2,198,974.51	289,804.87	2,199,025.32	289,916.50
	1752+92.61 250L	2,198,590.83	288,995.45	2,198,641.72	289,107.05

- NOTES:
- SOUNDINGS ARE IN FEET AND TENTHS AND REFER TO MEAN LOWER LOW WATER.
  - HORIZONTAL DATUM IS NAD 1983.
  - THE CONDITION SURVEY DEPICTED ON THIS DRAWING IS NOT INTENDED TO REPLACE NAUTICAL CHARTS PUBLISHED BY NATIONAL OCEAN SERVICE, U.S. COAST GUARD AIDS TO NAVIGATION, OR U.S. COAST GUARD NOTICES TO MARINERS. THE SOUNDINGS ON THIS DRAWING ONLY INDICATE THE GENERAL CONDITION OF THE CHANNEL ON THE DATE OF SURVEY, AND ARE NOT INTENDED TO BE USED FOR NAVIGATION PURPOSES.
  - DATE OF SURVEY: 17 DEC. 2007 CONDITION



SCALE: 1" = 200'

NO.	DATE	APPROV.	DESCRIPTION
1	17 DEC 2007		CONDITION SURVEY

DESIGNED BY: MRY	CHECKED BY: MRY	DATE: JAN 08
DRAWN BY: MRY	DESIGNED IN: 9200	DATE: JAN 08
REVIEWED BY:	DESIGNED CODE:	DATE: JAN 08
SUBMITTED BY:	DESIGNED CODE:	DATE: JAN 08

ATLANTIC INTRACOASTAL WATERWAY  
CHARLESTON TO FORT ROYAL  
9200  
STA. 1718+64 TO STA. 1756+14  
CHARLESTON COLLETON AND BEAUFORT COUNTIES  
SOUTH CAROLINA

SHEET REFERENCE NUMBER  
SHEET 35 OF 68