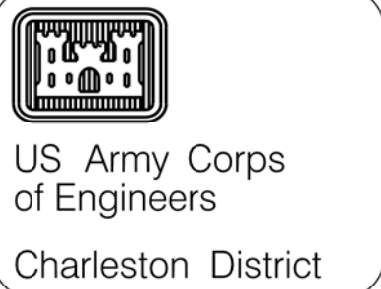
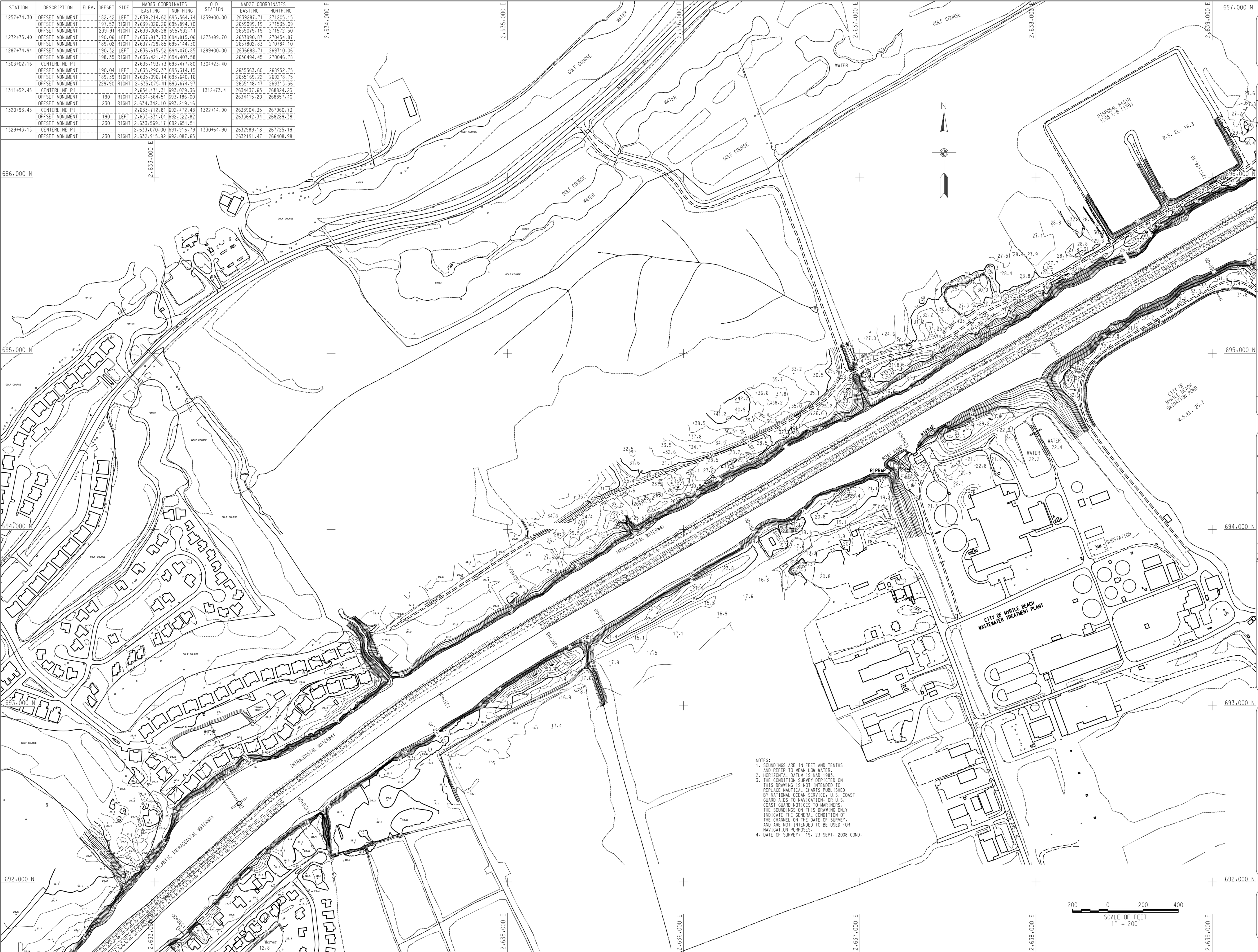


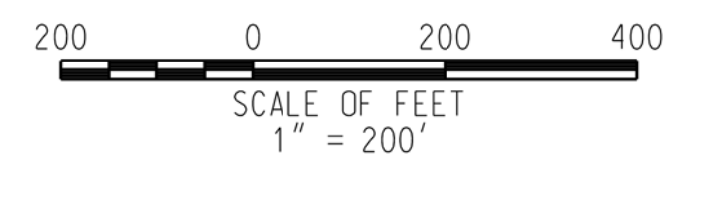
STATION	DESCRIPTION	ELEV.	OFFSET	SIDE	NAD83 COORDINATES		OLD STATION	NAD27 COORDINATES	
					EASTING	NORTHING		EASTING	NORTHING
1257+74.30	OFFSET MONUMENT	182.42	LEFT		2,639,174.62	695,564.74	1259+00.00	2639287.71	271205.15
	OFFSET MONUMENT	197.52	RIGHT		2,639,026.26	695,894.70		2639099.19	271535.09
	OFFSET MONUMENT	239.91	RIGHT		2,639,006.28	695,932.11		2639079.19	271572.50
1272+73.40	OFFSET MONUMENT	190.06	LEFT		2,637,917.73	694,815.06	1273+99.70	2637990.87	270454.87
	OFFSET MONUMENT	185.02	RIGHT		2,637,729.85	695,144.30		2637802.83	270784.70
1287+74.94	OFFSET MONUMENT	190.32	LEFT		2,636,615.52	694,070.85	1289+00.00	2636688.71	269710.06
	OFFSET MONUMENT	198.35	RIGHT		2,636,421.42	694,407.58		2636494.45	270046.78
1303+02.16	CENTERLINE PI				2,635,193.73	693,477.80	1304+23.40		
	OFFSET MONUMENT	190.04	LEFT		2,635,290.37	693,314.15		2635363.60	268952.75
	OFFSET MONUMENT	189.39	RIGHT		2,635,096.14	693,640.16		2635169.22	269278.75
	OFFSET MONUMENT	229.90	RIGHT		2,635,075.41	693,674.97		2635148.47	269313.56
1311+52.45	CENTERLINE PI				2,634,471.31	693,029.36	1312+73.4	2634437.63	268824.25
	OFFSET MONUMENT	190	RIGHT		2,634,364.51	693,186.00		2634415.20	268857.40
	OFFSET MONUMENT	230	RIGHT		2,634,342.10	693,219.16			
1320+93.43	CENTERLINE PI				2,633,712.81	692,472.48	1322+14.90	2633904.35	267960.73
	OFFSET MONUMENT	190	LEFT		2,633,831.01	692,322.82		2633642.34	268289.38
	OFFSET MONUMENT	230	RIGHT		2,633,569.17	692,651.51			
1329+43.13	CENTERLINE PI				2,633,070.00	691,916.73	1330+64.90	2632989.18	267725.19
	OFFSET MONUMENT	230	RIGHT		2,632,915.92	692,087.65		2632911.47	266408.98



DATE	DESCRIPTION	MARK	DATE	MARK	DESCRIPTION

Designed by	U.S. ARMY ENGINEER DISTRICT CORPS OF ENGINEERS CHARLESTON, SOUTH CAROLINA
Drawn by	MRV
Reviewed by	
Checked by	
Date	SEPT. 08
Design file no.	
Drawing Code	9233
File name	
Plot date	1 - 2007
Draw scale	

NOTES:
1. SOUNDINGS ARE IN FEET AND TENTHS AND REFER TO MEAN LOW WATER.
2. HORIZONTAL DATUM IS NAD 1983.
3. THE CONDITION SURVEY DEPICTED ON THIS DRAWING IS NOT INTENDED TO REPLACE NAUTICAL CHARTS PUBLISHED BY NATIONAL OCEAN SERVICES, U.S. COAST GUARD AIDS TO NAVIGATION, OR U.S. COAST GUARD NOTICES TO MARINERS. THE SOUNDINGS ON THIS DRAWING ONLY INDICATE THE GENERAL CONDITION OF THE CHANNEL ON THE DATE OF SURVEY, AND ARE NOT INTENDED TO BE USED FOR NAVIGATION PURPOSES.
4. DATE OF SURVEY: 19, 23 SEPT. 2008 COND.



ATLANTIC INTRACOASTAL WATERWAY
LITTLE RIVER TO WINHART BAY
9233
CONDITION SURVEY
STA. 1256 + 31 TO STA. 1334 + 08
Horry and Georgetown Counties, South Carolina