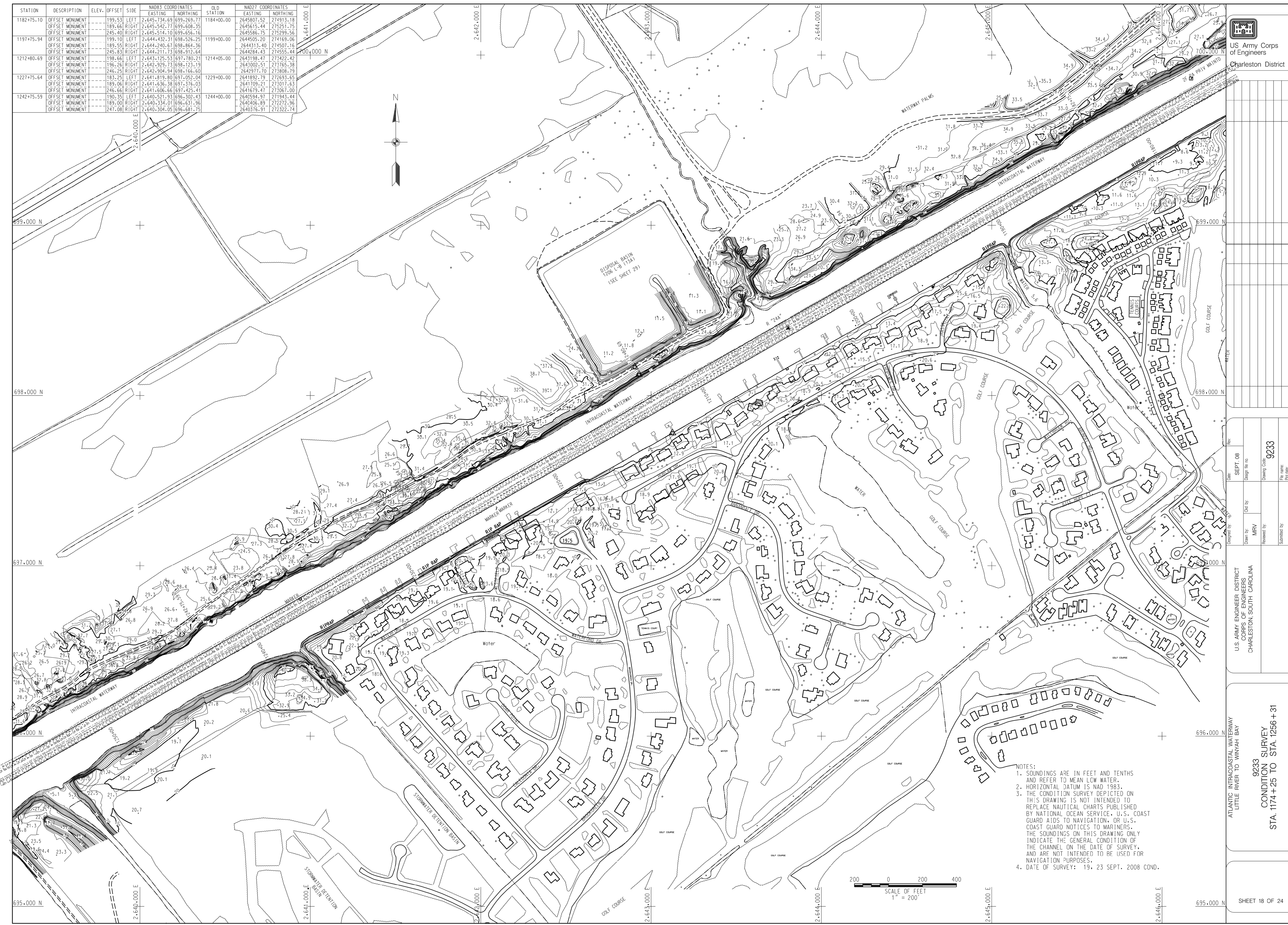


STATION	DESCRIPTION	ELEV.	OFFSET	SIDE	NAD83 COORDINATES		OLD STATION		NAD27 COORDINATES		R.C.L. (ft.)
					EASTING	NORTHING	EASTING	NORTHING	EASTING	NORTHING	
1182+75.10	OFFSET MONUMENT	199.53	199.53	LEFT	2,645,734.69	699,269.77	1184+00.00	2645807.52	274913.18		2,644,000 N
1189.66	OFFSET MONUMENT	189.66	189.66	RIGHT	2,645,542.77	699,608.35		2645615.44	275251.75		2,644,000 E
1197+75.94	OFFSET MONUMENT	245.40	245.40	RIGHT	2,645,574.70	699,656.16	1199+00.00	2645586.75	275299.56		2,645,000 E
	OFFSET MONUMENT	199.70	199.70	LEFT	2,644,432.31	698,526.25		2644505.20	274169.36		2,644,000 E
	OFFSET MONUMENT	189.55	189.55	RIGHT	2,644,240.67	698,864.36		2644313.40	274507.16		2,644,000 N
	OFFSET MONUMENT	245.83	245.83	RIGHT	2,644,211.73	698,912.64		2644284.43	274555.44		2,645,000 E
1212+80.69	OFFSET MONUMENT	198.66	198.66	LEFT	2,643,125.53	697,780.21	1214+05.00	2643198.47	273422.42		2,644,000 N
	OFFSET MONUMENT	196.26	196.26	RIGHT	2,642,929.73	698,123.19		2643002.51	273765.38		2,644,000 E
	OFFSET MONUMENT	246.25	246.25	RIGHT	2,642,904.94	698,166.60		2642977.70	273808.79		2,645,000 E
1227+75.64	OFFSET MONUMENT	183.25	183.25	LEFT	2,641,819.80	697,052.04	1229+00.00	2641892.79	272693.65		2,644,000 N
	OFFSET MONUMENT	189.06	189.06	RIGHT	2,641,636.38	697,376.03		2641709.21	273017.63		2,644,000 E
	OFFSET MONUMENT	246.66	246.66	RIGHT	2,641,606.66	697,425.41		2641679.47	273067.00		2,645,000 E
1242+75.59	OFFSET MONUMENT	190.35	190.35	LEFT	2,640,521.93	696,302.43	1244+00.00	2640594.97	271943.44		2,644,000 N
	OFFSET MONUMENT	189.00	189.00	RIGHT	2,640,334.01	696,631.96		2640406.89	272272.96		2,644,000 E
	OFFSET MONUMENT	247.08	247.08	RIGHT	2,640,304.05	696,681.75		2640376.91	272322.74		2,645,000 E

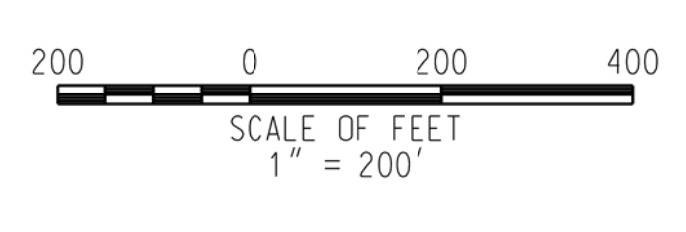


US Army Corps of Engineers  
Charleston District

DATE	DESCRIPTION

DESIGNED BY	DATE
DRIVEN BY	

NOTES:  
1. SOUNDINGS ARE IN FEET AND TENTHS AND REFER TO MEAN LOW WATER.  
2. HORIZONTAL DATUM IS NAD 1983.  
3. THE CONDITION SURVEY DEPICTED ON THIS DRAWING IS NOT INTENDED TO REPLACE NAUTICAL CHARTS PUBLISHED BY NATIONAL OCEAN SERVICE, U.S. COAST GUARD AIDS TO NAVIGATION, OR U.S. COAST GUARD NOTICES TO MARINERS. THE SOUNDINGS ON THIS DRAWING ONLY INDICATE THE GENERAL CONDITION OF THE CHANNEL ON THE DATE OF SURVEY, AND ARE NOT INTENDED TO BE USED FOR NAVIGATION PURPOSES.  
4. DATE OF SURVEY: 19, 23 SEPT. 2008 COND.



ATLANTIC INTRACOASTAL WATERWAY  
LITTLE RIVER TO WINPAH BAY  
9233  
CONDITION SURVEY  
STA. 1174 + 25 TO STA. 1256 + 31  
HORRY AND GEORGETOWN COUNTIES SOUTH CAROLINA