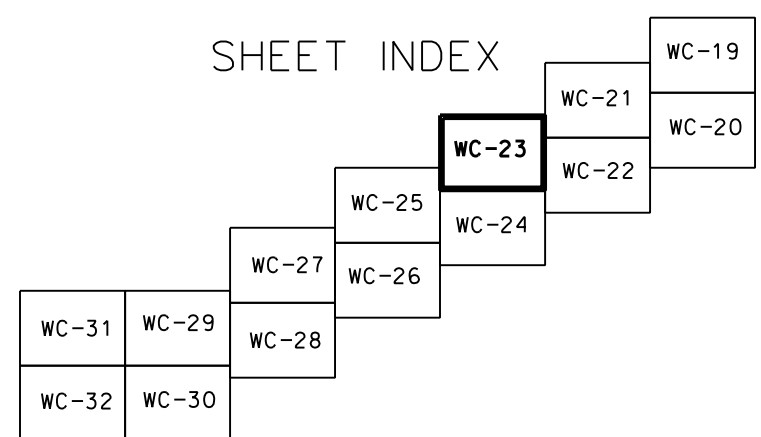


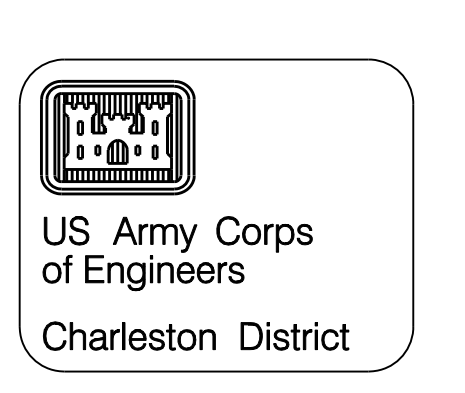
PT. NO.	STATION W/OFFSET	COORDINATES			
		NAD 27		NAD 83	
		EAST (X)	NORTHING (Y)	EAST (X)	NORTHING (Y)
532-00N 300L		2,474,986.35	457,157.58	2,474,999.66	457,314.86
516-00N 300L		2,473,427.82	456,796.44	2,473,441.32	456,953.34
502-00N 300L		2,472,064.15	456,480.54	2,472,077.81	456,637.11
502-00N 300R		2,472,199.52	455,896.07	2,472,213.32	456,052.71
496-20.39N 320L		2,471,444.70	456,357.63	2,471,458.42	456,514.05
496-20.39N 340R		2,471,697.37	455,738.68	2,471,711.24	455,895.20
485-00N 320L		2,470,444.85	455,747.93	2,470,458.79	455,904.13
3-00 185L		2,471,809.22	455,782.71	2,471,823.07	455,939.26
2-98.49 190L		2,471,454.57	456,354.63	2,471,468.29	456,511.05
2-98.49 210L		2,471,434.83	456,351.56	2,471,448.56	456,507.98
12-68.19 210L		2,471,291.58	457,271.44	2,471,305.08	457,427.76
12-68.19 190L		2,471,310.80	457,278.19	2,471,324.29	457,434.51
14-55.27 210L		2,471,236.58	457,367.34	2,471,250.06	457,523.64
14-55.27 190L		2,471,252.15	457,380.43	2,471,265.62	457,536.73
23-20.22 190L		2,470,648.22	457,884.97	2,470,661.60	458,041.08
28-68.22 190L		2,470,191.42	458,004.62	2,470,204.79	458,160.61
28-68.22 160L		2,470,193.72	458,035.12	2,470,207.08	458,191.11
33-76.72 190L		2,469,653.27	457,938.62	2,469,666.69	458,094.47
33-76.72 160L		2,469,660.83	457,969.65	2,469,674.24	458,125.50
37-26.72 190L		2,469,274.14	458,193.75	2,469,278.52	458,349.49
37-26.72 160L		2,469,295.88	458,215.29	2,469,309.25	458,371.03
40-20 190L		2,469,087.63	458,466.59	2,469,100.95	458,622.26
40-20 160L		2,469,112.36	458,483.61	2,469,125.67	458,639.29



NOTES:
 1. SOUNDINGS ARE IN FEET AND TENTHS AND REFER TO MEAN LOWER LOW WATER.
 2. HORIZONTAL DATUM IS NAD 1983.
 3. THE CONDITION SURVEY DEPICTED ON THIS DRAWING IS NOT INTENDED TO REPLACE NAUTICAL CHARTS PUBLISHED BY NATIONAL OCEAN SERVICE, U.S. COAST GUARD AIDS TO NAVIGATION, OR U.S. COAST GUARD NOTICES TO MARINERS. THE SOUNDINGS ON THIS DRAWING ONLY INDICATE THE GENERAL CONDITION OF THE CHANNEL ON THE DATE OF SURVEY, AND ARE NOT INTENDED TO BE USED FOR NAVIGATION PURPOSES.
 4. DATE OF SURVEY: 23, 24, 30 OCT. 2007

LEGEND

BUILDING	[Symbol]
FENCE	[Symbol]
GUARD RAIL	[Symbol]
TREE LINE	[Symbol]
INDIVIDUAL TREE	[Symbol]
POWER POLE	[Symbol]
LIGHT POLE	[Symbol]
WATER	[Symbol]
WALL	[Symbol]
RETAINING WALL	[Symbol]
SHRUB	[Symbol]
BRUSH-MARSH LINE	[Symbol]
POST	[Symbol]
PAVED ROAD	[Symbol]
UNPAVED ROAD	[Symbol]
NAVAID GREEN	[Symbol]
NAVAID RED	[Symbol]
H&V CONTROL	[Symbol]
U.S. HIGHWAY	[Symbol]
STATE HIGHWAY	[Symbol]
ROAD NUMBER	[Symbol]
ANCHORAGE	[Symbol]
WRECK	[Symbol]
MONUMENT	[Symbol]



NO.	DATE	APPROV.	DESCRIPTION
1	10/23/07		DESIGN
2	10/24/07		DESIGN
3	10/24/07		DESIGN
4	10/24/07		DESIGN
5	10/24/07		DESIGN
6	10/24/07		DESIGN
7	10/24/07		DESIGN
8	10/24/07		DESIGN
9	10/24/07		DESIGN
10	10/24/07		DESIGN
11	10/24/07		DESIGN
12	10/24/07		DESIGN
13	10/24/07		DESIGN
14	10/24/07		DESIGN
15	10/24/07		DESIGN
16	10/24/07		DESIGN
17	10/24/07		DESIGN
18	10/24/07		DESIGN
19	10/24/07		DESIGN
20	10/24/07		DESIGN
21	10/24/07		DESIGN
22	10/24/07		DESIGN
23	10/24/07		DESIGN
24	10/24/07		DESIGN
25	10/24/07		DESIGN
26	10/24/07		DESIGN
27	10/24/07		DESIGN
28	10/24/07		DESIGN
29	10/24/07		DESIGN
30	10/24/07		DESIGN
31	10/24/07		DESIGN
32	10/24/07		DESIGN

DESIGNED BY:	DATE: 10/23/07
DRAWN BY:	DESIGN IN CHARGE: 9193
REVIEWED BY:	DESIGN CODE:
SUBMITTED BY:	FILE NAME: 9193
	PLG SCALE: 1" = 200'

ATLANTIC INTRACOASTAL WATERWAY
 STA 0+45 TO STA 42+80 JERREY CREEK CONDITION
 9193
 GEORGETOWN AND CHARLESTON COUNTIES