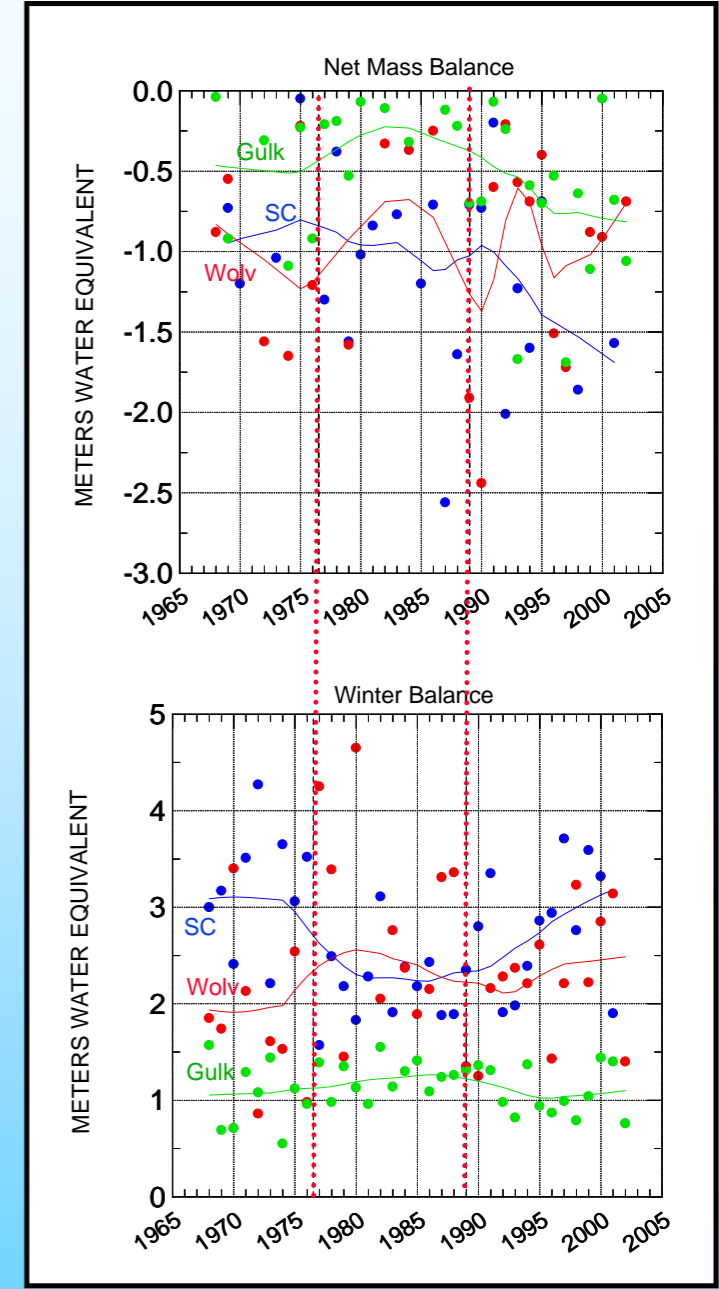
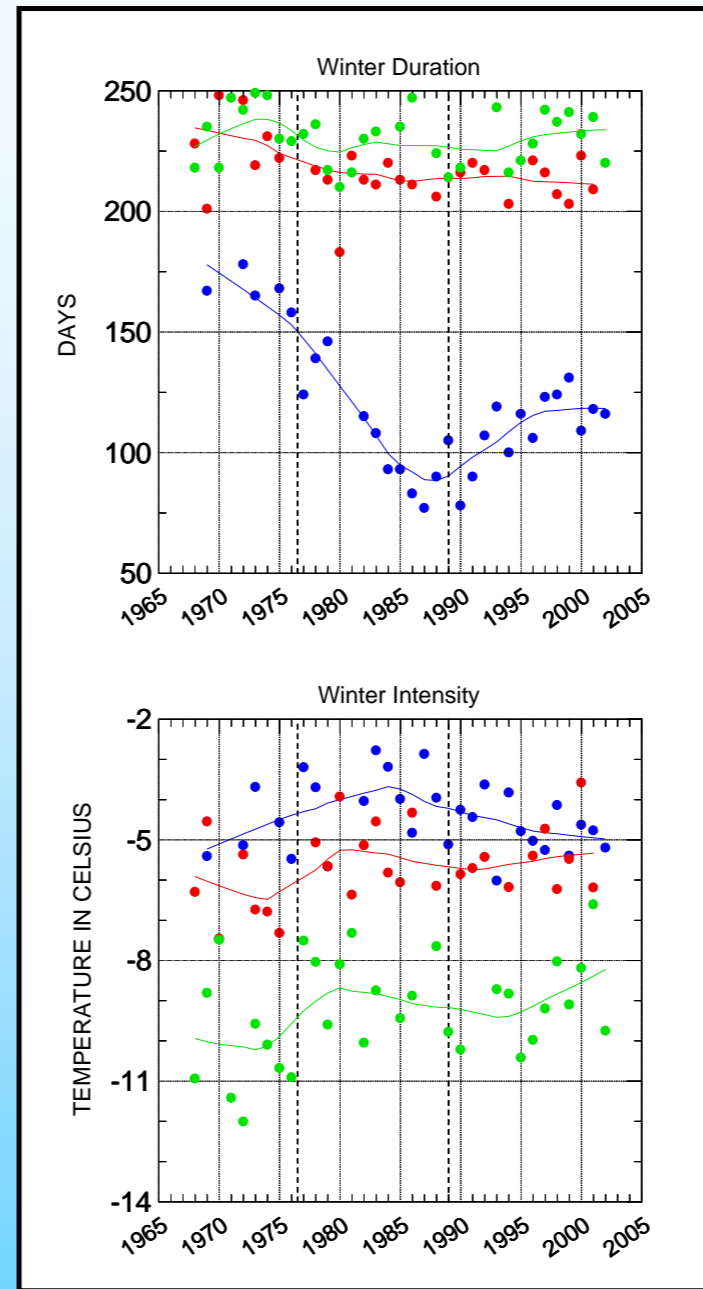
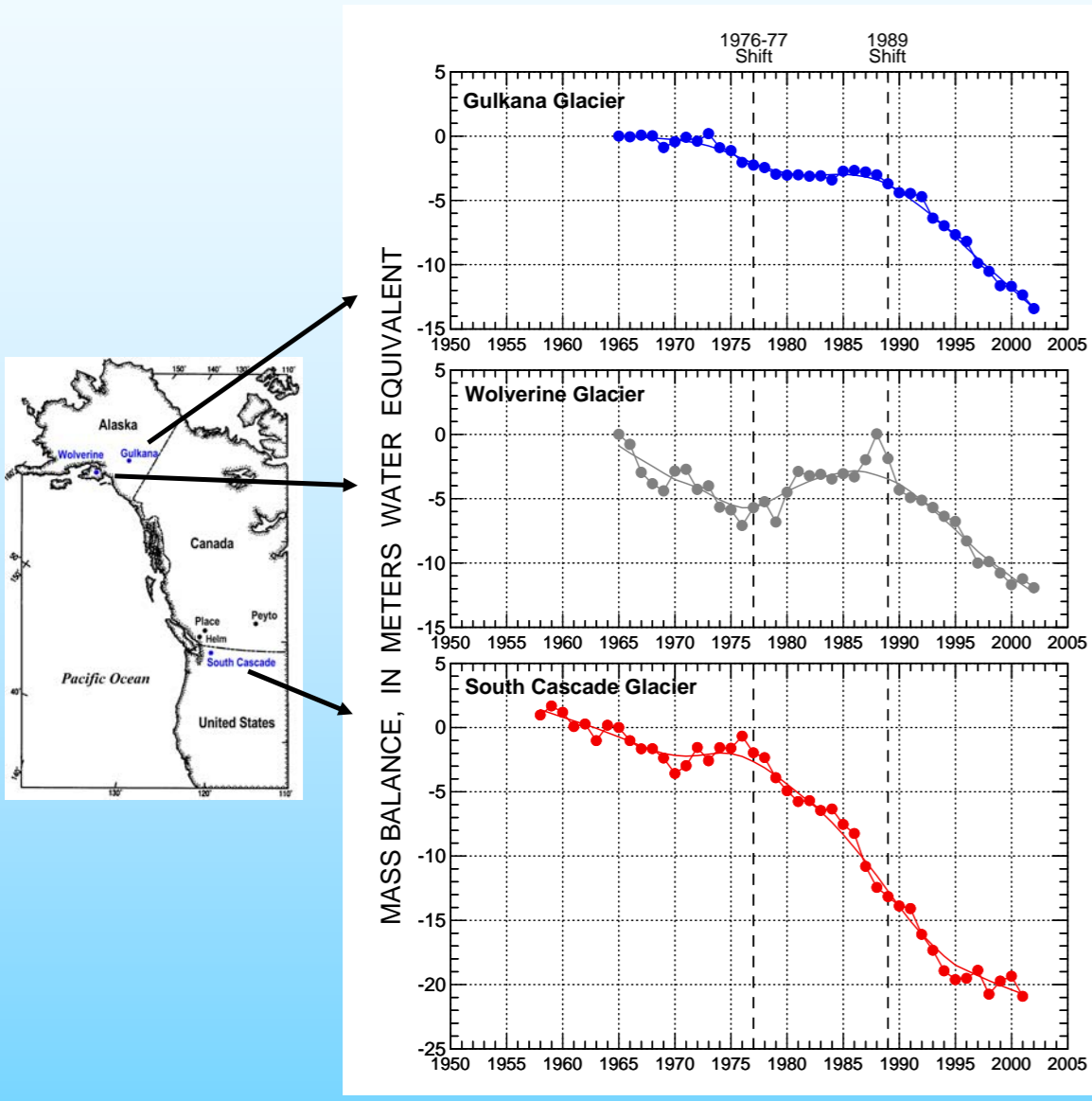


by

D.C. Trabant, R.S. March, L. H. Cox, W.D Harrison, and E.G. Josberger

U.S. Geological Survey and University of Alaska

Gulkana, Wolverine, and South Cascade Glaciers Cumulative Net Mass Balance



NCEP Reanalysis data Correlations

	850 mb	Summer		Winter		
		MJJAS Temp	ONDJFMA Temp	MJJAS Rel Humid.	Directional Winds	Combined
vs.		Summer Balance	Winter Balance	Winter Balance	Winter Balance	Fav. Wind and RH
Gulkana		-0.64	0.00	0.18	easterly - 0.26	0.26
Wolverine		-0.64	0.59	0.60	northerly 0.67	0.70
South Cascade		-0.81	-0.64	0.66	easterly 0.80	0.80

