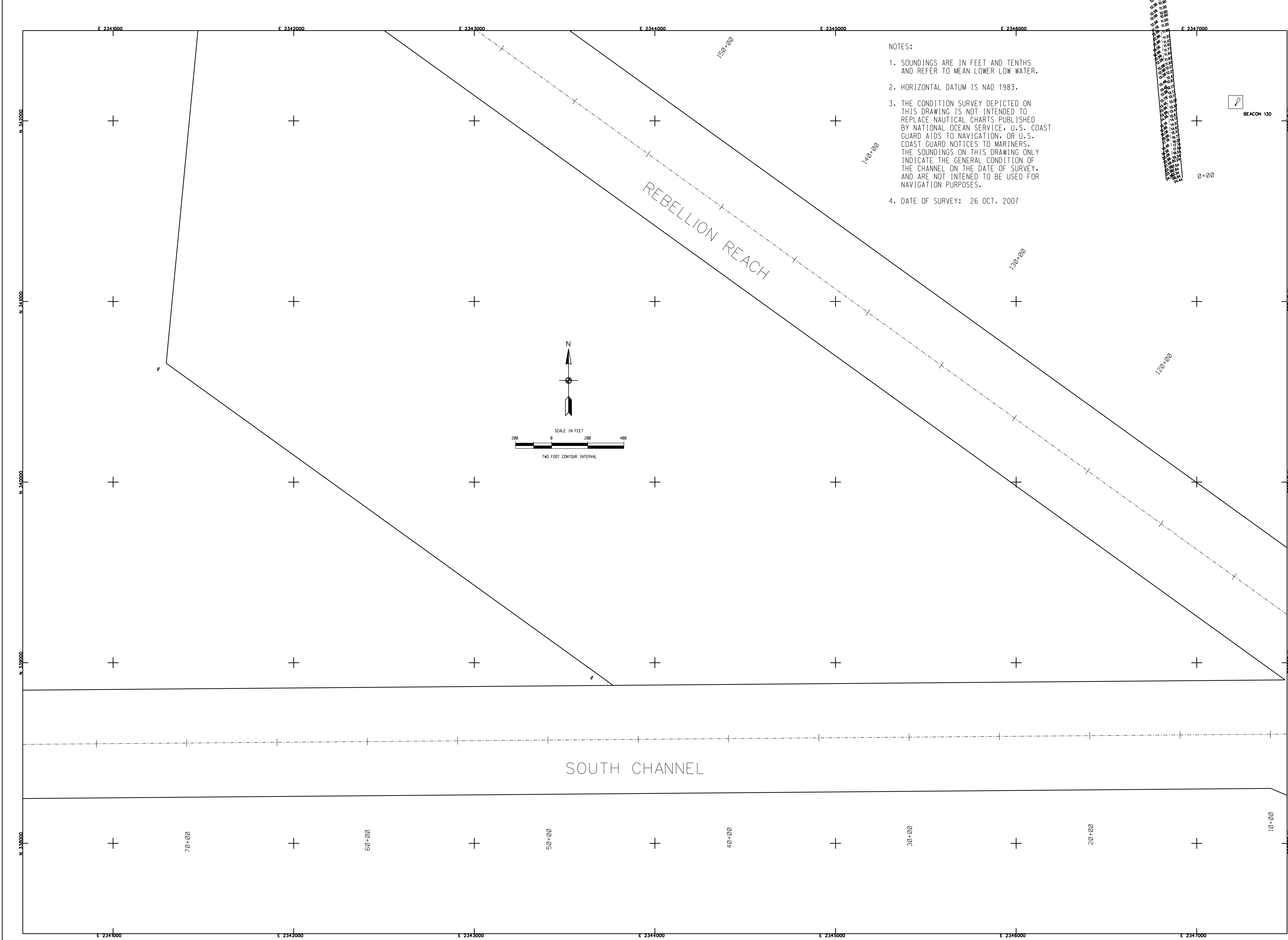


| MARK | DESCRIPTION | DATE | APPROV. |
|------|-------------|------|---------|
| | | | |
| | | | |
| | | | |
| | | | |
| | | | |
| | | | |
| | | | |
| | | | |
| | | | |
| | | | |
| | | | |

| | | |
|--------------|-------------------|----------|
| DESIGNED BY: | DATE: | REV. |
| DRAWN BY: | 1 NOV 07 | 1 |
| CHECKED BY: | DESIGN IN CHARGE: | |
| APPROVED BY: | MJV | 9192 |
| | DESIGNED BY: | |
| | DATE: | |
| | DESIGN CODE: | |
| | ISSUED BY: | |
| | DATE: | |
| | SCALE: | 1" = 20' |

CHARLESTON HARBOR
SHEM CREEK PROFILES
9192
CHARLESTON COUNTY SOUTH CAROLINA

SHEET REFERENCE NUMBER
SHEET 2 OF 4



- NOTES:
1. SOUNDINGS ARE IN FEET AND TENTHS AND REFER TO MEAN LOWER LOW WATER.
 2. HORIZONTAL DATUM IS NAD 1983.
 3. THE CONDITION SURVEY DEPICTED ON THIS DRAWING IS NOT INTENDED TO REPLACE NAUTICAL CHARTS PUBLISHED BY NATIONAL OCEAN SERVICE, U.S. COAST GUARD AIDS TO NAVIGATION, OR U.S. COAST GUARD NOTICES TO MARINERS. THE SOUNDINGS ON THIS DRAWING ONLY INDICATE THE GENERAL CONDITION OF THE CHANNEL ON THE DATE OF SURVEY, AND ARE NOT INTENDED TO BE USED FOR NAVIGATION PURPOSES.
 4. DATE OF SURVEY: 26 OCT. 2007