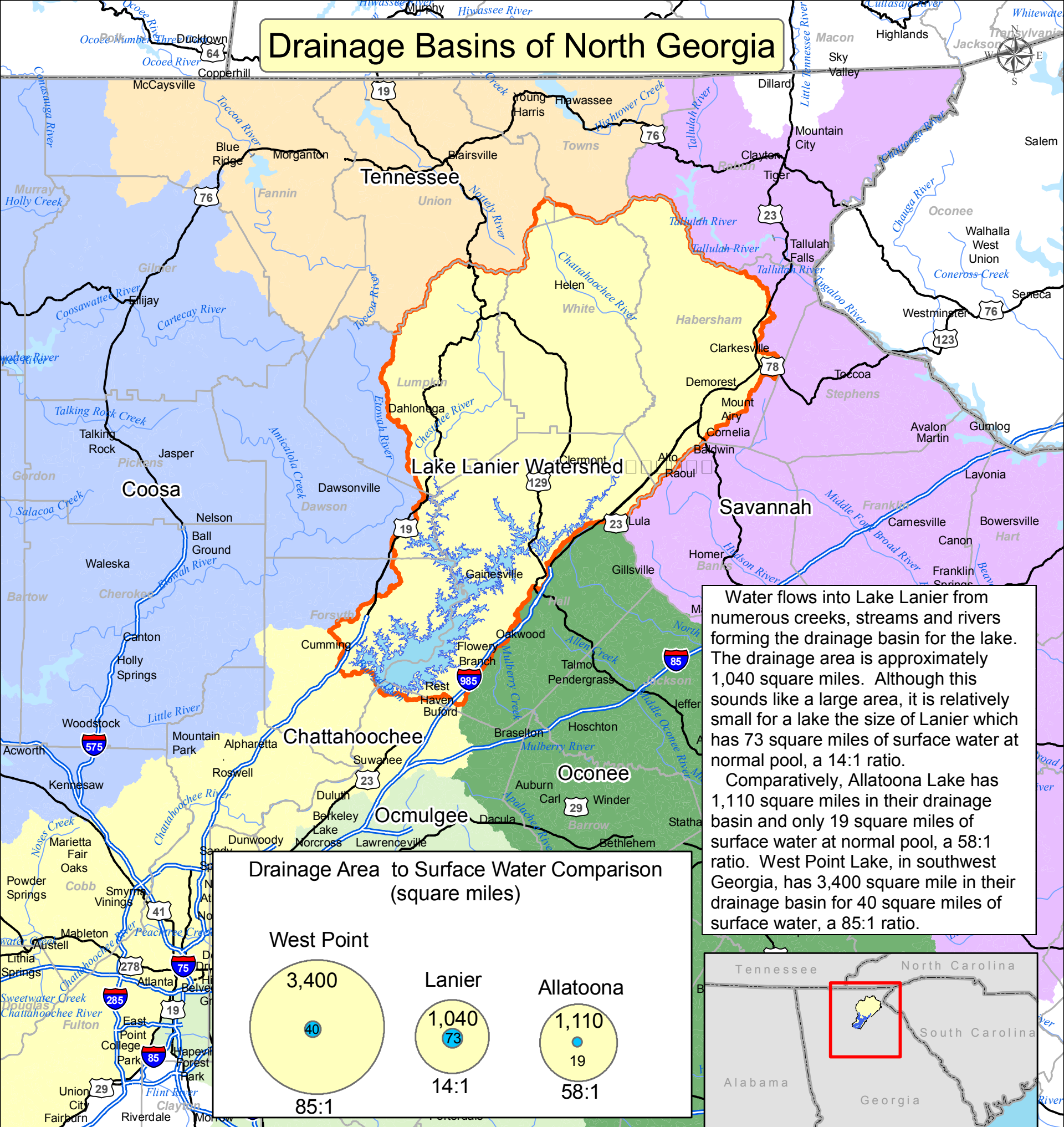
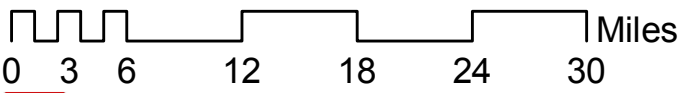


# Drainage Basins of North Georgia



Water flows into Lake Lanier from numerous creeks, streams and rivers forming the drainage basin for the lake. The drainage area is approximately 1,040 square miles. Although this sounds like a large area, it is relatively small for a lake the size of Lanier which has 73 square miles of surface water at normal pool, a 14:1 ratio.

Comparatively, Allatoona Lake has 1,110 square miles in their drainage basin and only 19 square miles of surface water at normal pool, a 58:1 ratio. West Point Lake, in southwest Georgia, has 3,400 square mile in their drainage basin for 40 square miles of surface water, a 85:1 ratio.



Lake Lanier Watershed Boundary



1 inch equals 10 miles

Watershed Data, USGS  
Road and Boundary Data, ESRI, 2006  
Lake Lanier Area, USACE

