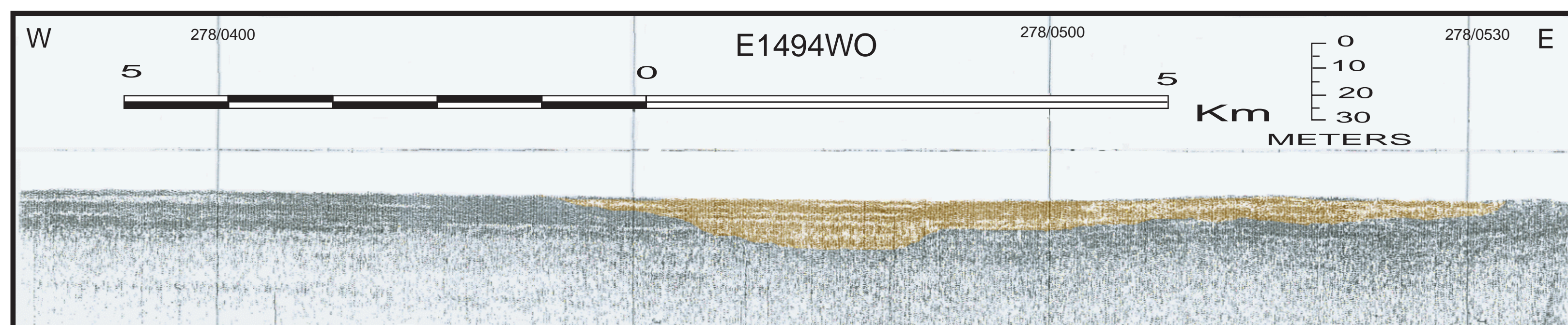




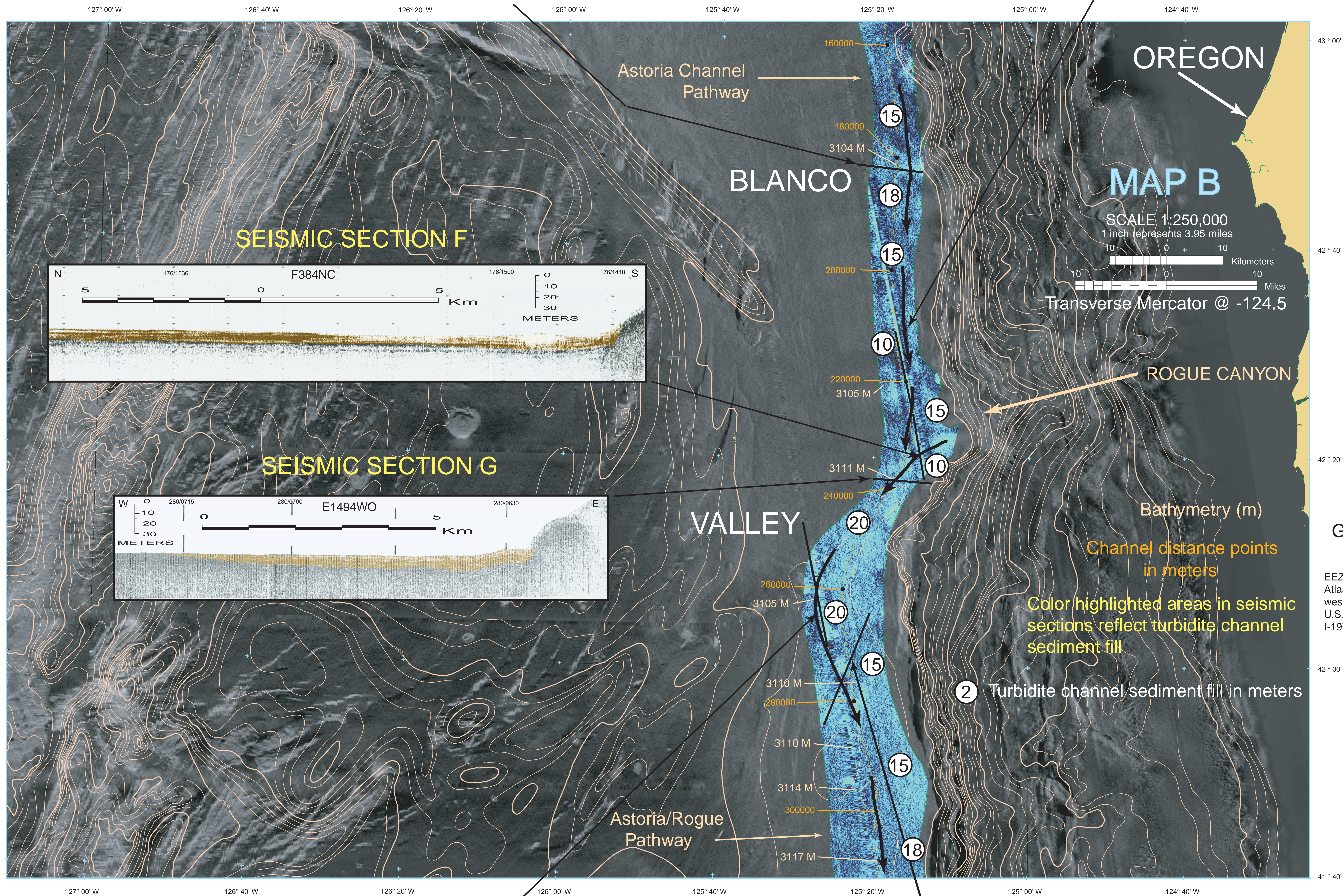
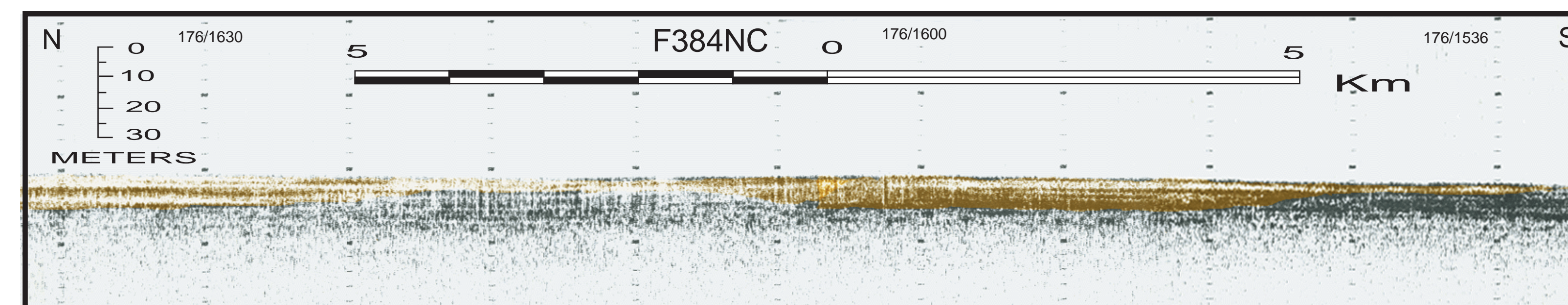
TURBIDITE PATHWAYS IN CASCADIA BASIN AND TUFTS ABYSSAL PLAIN, PART A, ASTORIA CHANNEL, BLANCO VALLEY, AND GORDA BASIN

By
Stephen C. Wolf and Michael R. Hamer

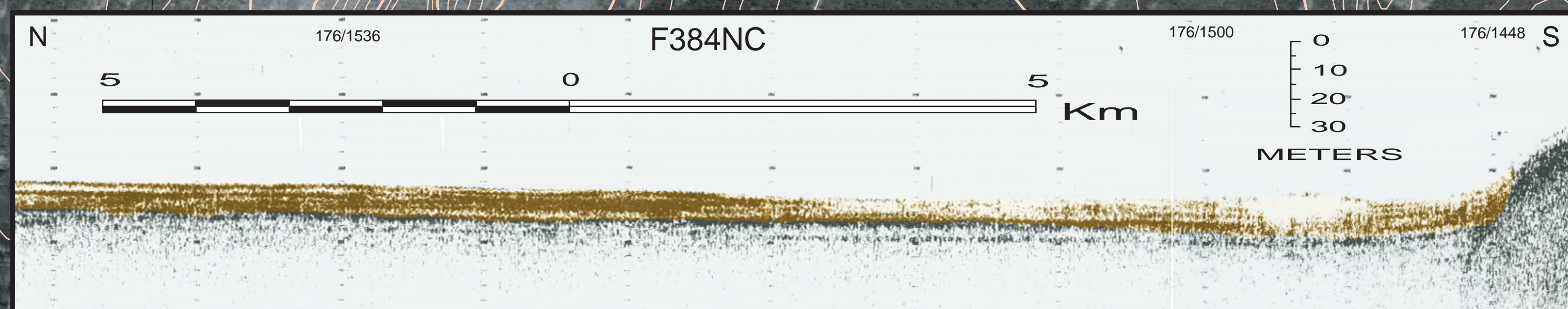
SEISMIC SECTION D



SEISMIC SECTION E



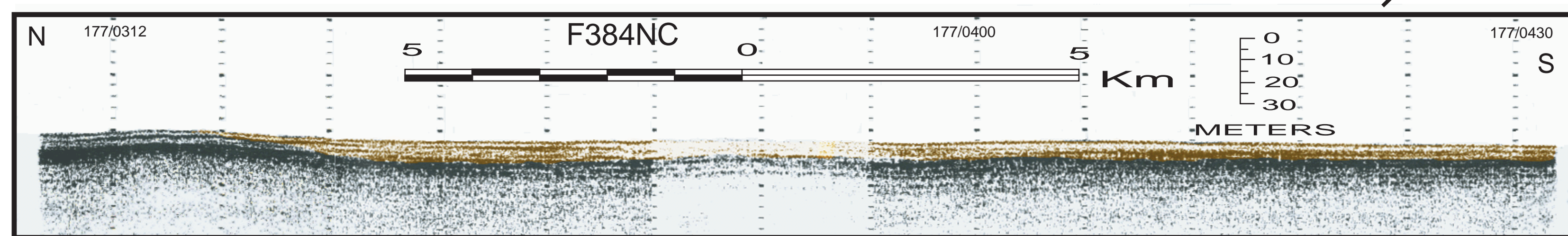
SEISMIC SECTION F



SEISMIC SECTION G



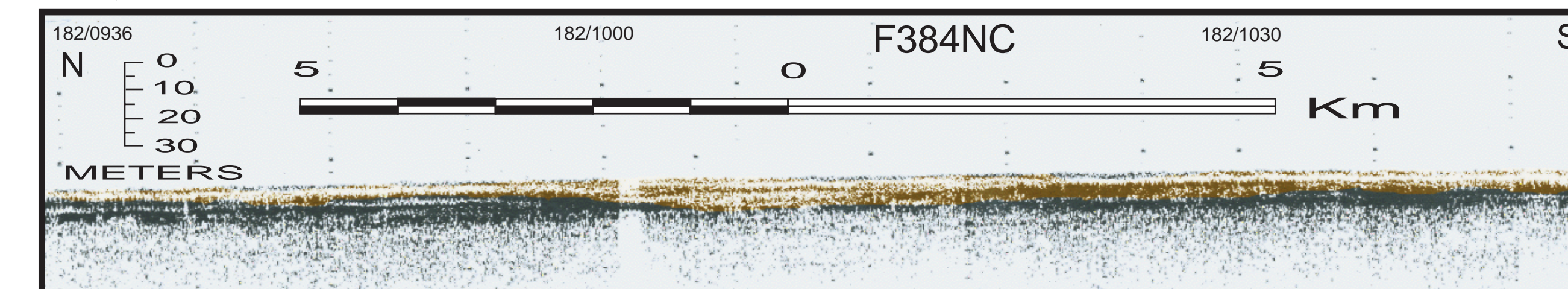
SEISMIC SECTION H



BATHYMETRY SOURCE

Grim, M.S., Chase, T.E., Evenden, G.I., Holmes, M.L., Normark, W.R., Wilde, P., Fox, C.G., Lief, C.J., and Seekins, B.A., 1992, Map showing bottom topography of the Pacific Continental Margin, Strait of Juan de Fuca to Cape Mendocino: U.S. Geological Survey Miscellaneous Investigations Series map I-2091-C, scale 1:1,000,000

SEISMIC SECTION I



| | |
|---------------------------|-------|
| 127° 00' 44° 20' 124° 40' | MAP A |
| Astoria Channel | |
| 43° 00' | |
| 127° 00' 41° 40' 124° 40' | MAP B |
| Astoria Channel | |
| Rogue Canyon | |
| 127° 40' 124° 00' | |
| MAP C | |
| Astoria Channel | |
| Trinidad, Eel, | |
| Bear Valley, Mendocino, | |
| and Mattole Canyons | |
| 40° 00' | |

GLORIA IMAGERY BACKGROUND

EEZ-SCAN 84 Scientific Staff (1986), Atlas of the Exclusive Economic Zone, western conterminous United States, U.S.G.S., Misc. Investigations Series I-1972, 1:500,000, 152p.

This report (map) is preliminary and has not been reviewed for conformity with U.S. Geological Survey editorial standards (or with the North American Stratigraphic Code). Any use of trade, product or firm names is for descriptive purposes only and does not imply endorsement by the U.S. Government.

This map was printed on an electronic plotter directly from digital files. Original and calibration maps may differ in resolution, plotting, and projection. All measurements on this map are in metric units. Scale and proportions may not be true on parts of this map.

For sale by U.S. Geological Survey, Map Distribution, Box 23386, Federal Center, Denver, CO 80225-1-888-USA-USGS
Available on World Wide Web at <http://geopubs.er.usgs.gov/usa.html>