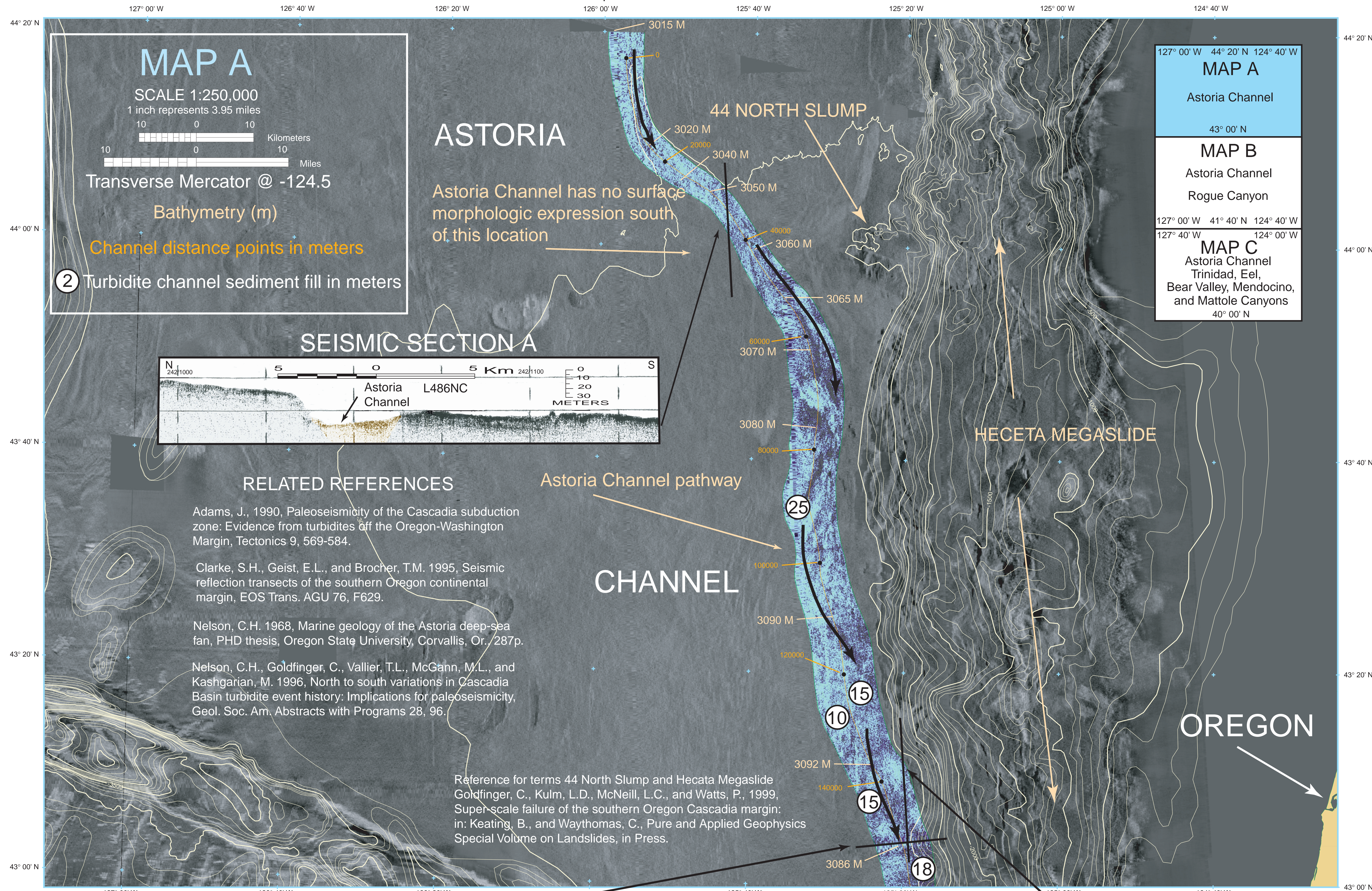


TURBIDITE PATHWAYS IN CASCADIA BASIN AND TUFTS ABYSSAL PLAIN PART A, ASTORIA CHANNEL, BLANCO VALLEY, AND GORDA BASIN

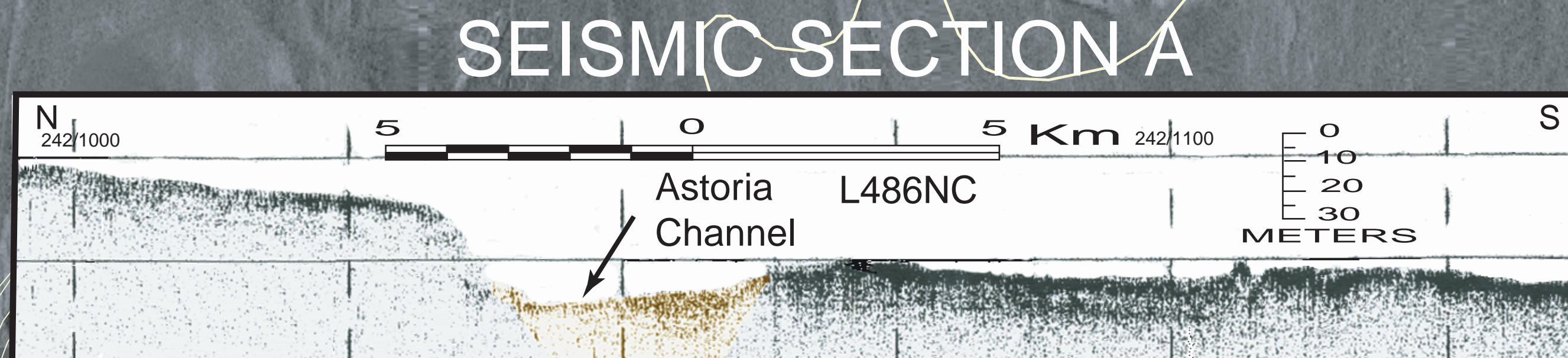
By
Stephen C. Wolf and Michael R. Hamer



MAP A
Astoria Channel
43° 00' N

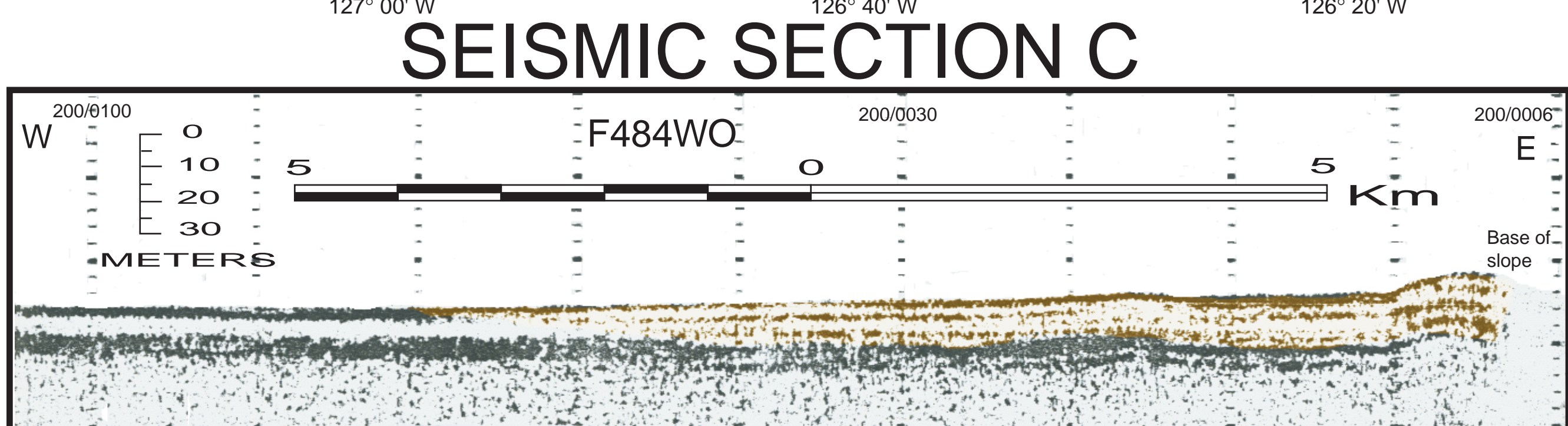
MAP B
Astoria Channel
Rogue Canyon
127° 00' W 41° 40' N 124° 40' W
127° 40' W 124° 00' W

MAP C
Astoria Channel
Trinidad, Eel,
Bear Valley, Mendocino,
and Mattole Canyons
40° 00' N



- RELATED REFERENCES**
- Adams, J., 1990, Paleoseismicity of the Cascadia subduction zone: Evidence from turbidites off the Oregon-Washington Margin, *Tectonics* 9, 569-584.
 - Clarke, S.H., Geist, E.L., and Brocher, T.M. 1995, Seismic reflection transects of the southern Oregon continental margin, *EOS Trans. AGU* 76, F629.
 - Nelson, C.H. 1968, Marine geology of the Astoria deep-sea fan, PHD thesis, Oregon State University, Corvallis, Or., 287p.
 - Nelson, C.H., Goldfinger, C., Vallier, T.L., McGann, M.L., and Kashgarian, M. 1996, North to south variations in Cascadia Basin turbidite event history: Implications for paleoseismicity, *Geol. Soc. Am. Abstracts with Programs* 28, 96.

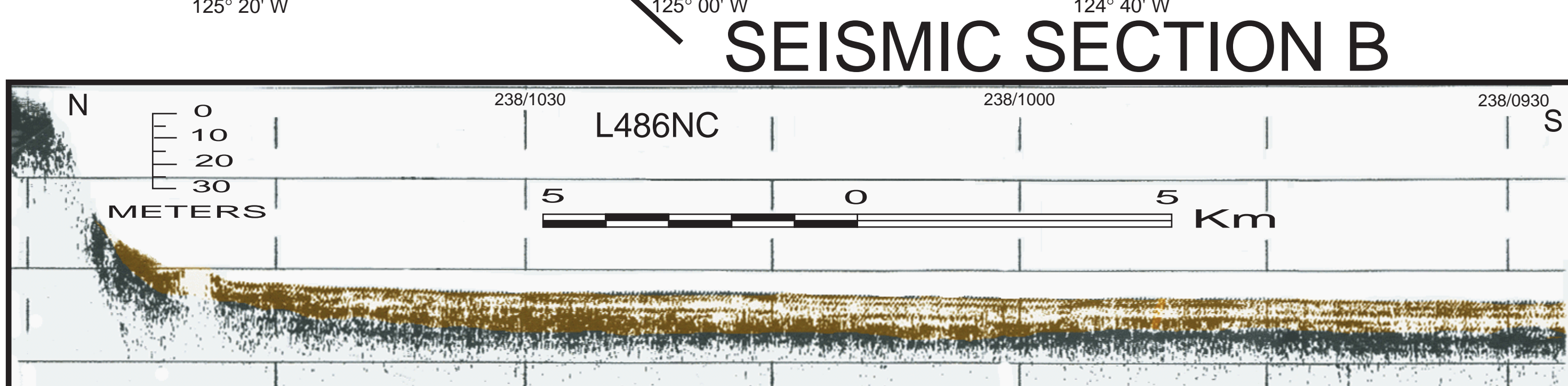
Reference for terms 44 North Slump and Hecata Megaslides
Goldfinger, C., Kulm, L.D., McNeill, L.C., and Watts, P., 1999, Super-scale failure of the southern Oregon Cascadia margin: in: Keating, B., and Waythomas, C., *Pure and Applied Geophysics Special Volume on Landslides*, in Press.



Color highlighted areas in seismic sections represents turbidite channel sediment fill

GLORIA IMAGERY BACKGROUND
EEZ-SCAN 84 Scientific Staff (1986) Atlas of the Exclusive Economic Zone, western conterminous United States, U.S.G.S., Misc. Investigations Series I-1972, 1:500,000, 152p.

BATHYMETRY SOURCE
Grim, M.S., Chase, T.E., Evenden, G.I., Holmes, M.L., Normark, W.R., Wilde, P., Fox, C.G., Lief, C.J., and Seekins, B.A., 1992, Map showing bottom topography of the Pacific Continental Margin, Strait of Juan de Fuca to Cape Mendocino: U.S. Geological Survey Miscellaneous Investigations Series map I-2091-C, scale 1:1,000,000



This report (map) is preliminary and has not been reviewed for conformity with U.S. Geological Survey editorial standards (or with the North American Stratiographic Code). Any use of trade, product or firm names is for descriptive purposes only and does not imply endorsement by the U.S. Government.

The map was printed on an electronic plotter directly from digital files. Dimensional calibration may vary between electronic plotters and between X and Y directions on the same plotter, and paper may change size due to atmospheric conditions, therefore, scale and proportions may not be true on print of this map.

For sale by U.S. Geological Survey, Map Distribution, Box 25286, Federal Center, Denver, CO 80225-1986-ASR-USGS
Available on World Wide Web at <http://geopubs.wr.usgs.gov/data.html>