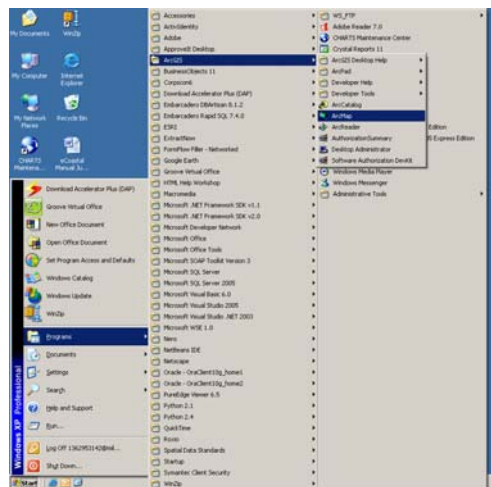




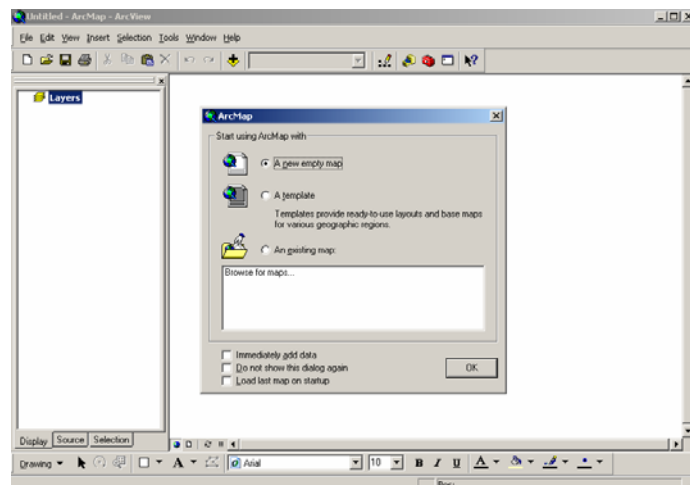
The following instructions will allow a user to connect to any publicly available internet map service (IMS) created by the Spatial Data Branch, Operations Division (OP-J), Mobile District through ArcMap. ArcMap is a component of ESRI's ArcGIS Geographical Information System (GIS).

1. Click the start button in the lower left hand corner of the screen. Click programs, then ArcGIS, then ArcMap.



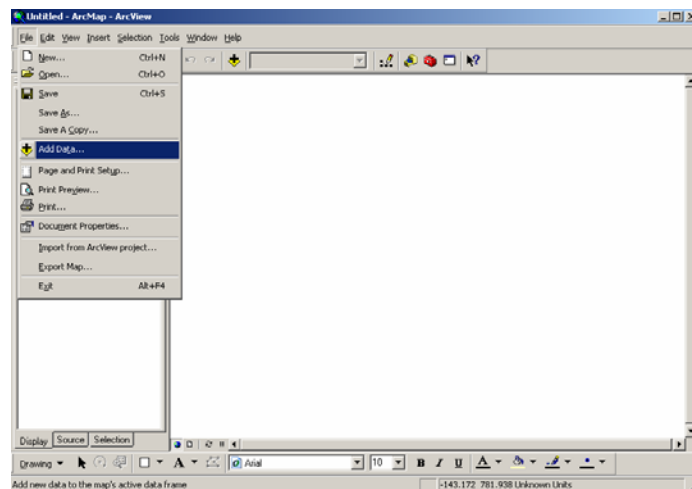
Step 1

2. ArcMap will open, and a window will pop up asking what to start ArcMap with. Click "a new empty map," then click OK.



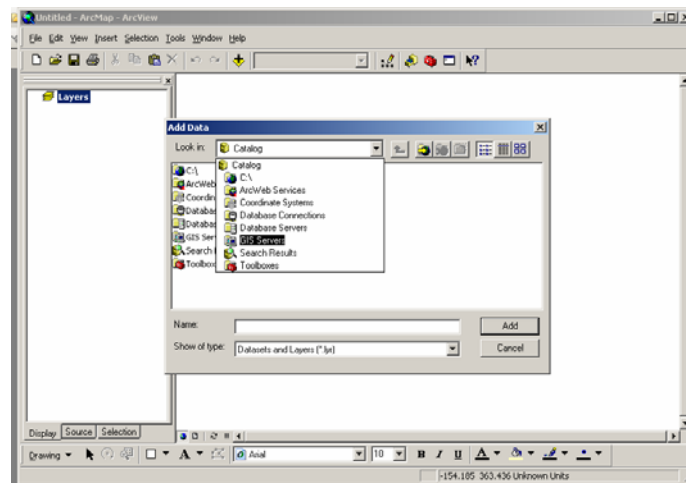
Step 2

3. Click File, then Add data. Users can also click the add data icon in the toolbar.



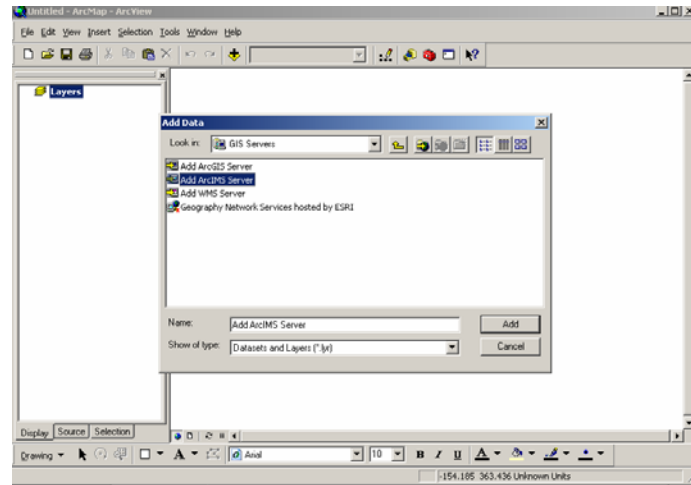
Step 3

4. An Add data window will open with several options for connections. Under the “Look in” box, select GIS servers.



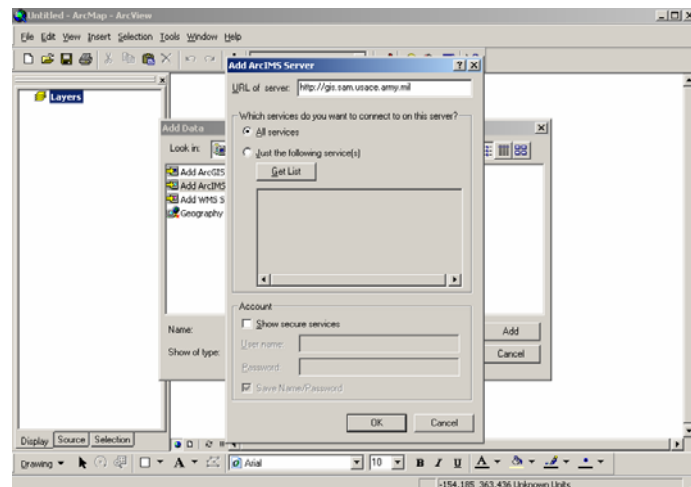
Step 4

5. Select Add ArcIMS Server then click add.



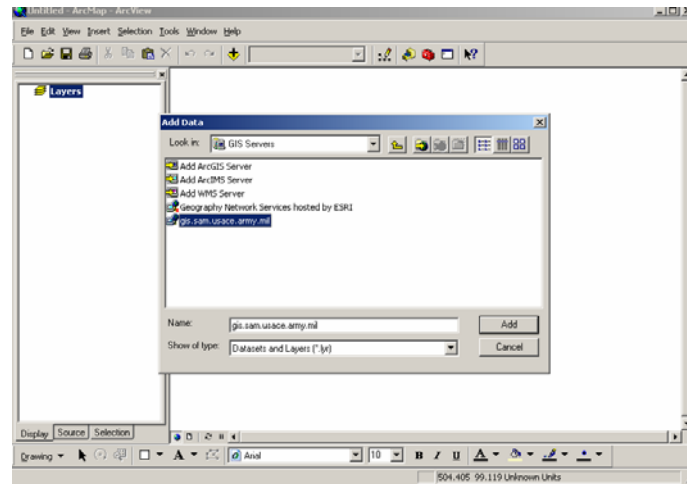
Step 5

6. A new Add ArcIMS Server window will pop up. Type <http://gis.sam.usace.army.mil> into the URL of server box, and then click OK.



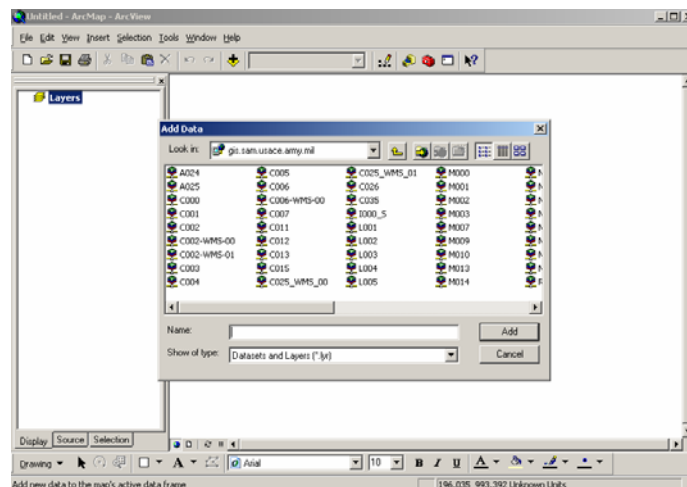
Step 6

7. The GIS Servers window will open again, this time with a clickable link titled “gis.sam.usace.army.mil.” Click that link, then click add.



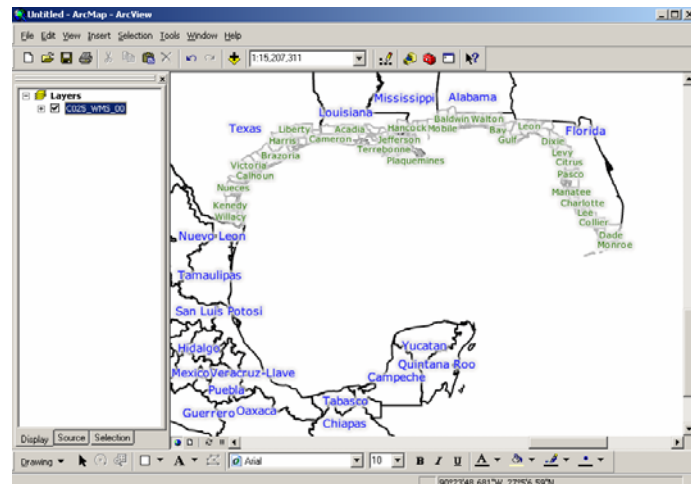
Step 7

8. A list of clickable codes representing different map services will open in a new window. For a list of codes and what they mean see Appendix A. The codes represent a list of OP-J’s IMS services publicly available. Select a specific code and click add.



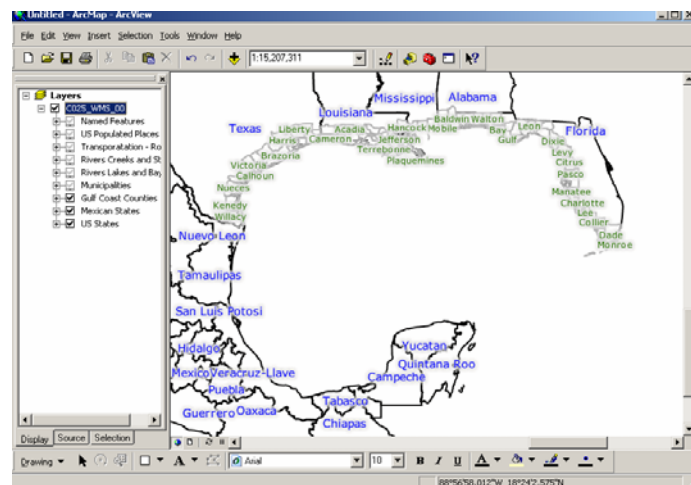
Step 8

9. The map selected will open in ArcMap. From here, layers can be opened or closed by clicking the links found on the left hand side of the screen.



Step 9

10. A black check mark next to a layer means the layer is visible. A gray check mark next to a layer means that the layer is not visible, because it's not in range. Users will have to zoom in or out accordingly to see those layers.



Step 10

Users are now connected to publicly available internet map services (IMS) created by the Spatial Data Branch, Operations Division (OP-J), Mobile District through ArcMap.

Appendix A

The following is a list of available codes and the map services with which they correspond:

C000 – GIWW Coastal GIS Basemap
C001 – eCoastal Regional Sediment Basemap
C002 – eCoastal Navigation Basemap
C003 – eCoastal Federal Project Basemap
C004 – eCoastal Federal Studies Basemap
C005 – eCoastal Environmental Resources Basemap
C006 – eCoastal Regional Coastal Mapping
C007 – eCoastal Coastal Structures
C011 – Hurricane Georges Post Storm Survey
C012 – Mobile Bay Demo Hurricane Planning Basemap
C013 – Baseline 2002
C015 – CHL eCoastal GIS
C026 – West Bay, FL Sea Grass Restoration
C035 – National Shoreline Management
L001 – Lake Lanier GIS
L002 – Lake Okatibbee GIS
L003 – Lake Seminole GIS
L004 – Lake WF George GIS
L005 – Westpoint Lake GIS
N002 – USACE Navigation Channel Framework GIS and Database
R000 – Alabama Black-warrior Tombigbee River GIS
R001 – Tennessee-Tombigbee Waterway GIS
R003 – Little River IMS and GIS Data Integration
V000 – Walton County Shoreline Basemap
V002 – Renew Alabama – Brownfields GIS Database
V003 – Lake Altoona Watershed Study
X005 – Mobile District Civil Works Basemap
X006 – Mississippi Coastal Improvements Program
X008 – Louisiana Coastal Restoration and Protection
X010 – Mobile District Safety Incidents Map
X016 – MsCIP Regulatory Map
Y003 – Texas Hurricane Evacuation Study- GSA