

## Recreation

Situated among steep-sided valleys and forested hillsides, Mahoning Creek Lake is surrounded by the rugged and striking terrain of western Pennsylvania. The U.S. Army Corps of Engineers invites you to discover Mahoning's breathtaking scenery and its opportunities for outdoor recreation.



Visitors will delight in the scenic beauty that envelops the project. There are wondrous views along forested pathways and small inlets along the lake's shoreline. Equally, visitors will enjoy the many outdoor activities available – boat, fish, hike, camp, picnic or just enjoy the surrounding flora and fauna at Mahoning Creek Lake.

Boating on Mahoning Creek Lake is limited to 10 horsepower and swimming is not permitted in the lake. Canoeists, fishermen and persons using small boats, however, will appreciate the more peaceful and relaxed atmosphere that is characteristic of the lake and upstream sections of the creek. Boaters will especially enjoy floating Mahoning Creek as it meanders in the steep-sided valleys on its way toward the Allegheny River, and exploring the small inlets of the lake.



Mahoning Creek Lake is blessed with clean water and a varied, thriving fish population. In addition to trophy-sized pike, anglers will find abundant walleye, muskie, channel catfish, crappie and bass inhabiting the lake.

In the area near the dam, the Corps maintains facilities for the public's enjoyment. Picnickers can relax in one of Mahoning's tree-shaded picnic areas, complete with modern restrooms, grills, picnic tables, playground facilities, an overlook and walking trails. The Outflow Area is accessible for persons with disabilities and includes a restroom, pavilion, picnic sites and fishing access.

The Corps of Engineers leases 860 acres of the project lands and waters to the Pennsylvania Fish and Boat Commission. The lease encompasses the main body of the lake and its adjoining lands including the Milton Loop Boat Launch and the Sportsman's Area.



The Milton Loop Boat Launch is a concrete three lane ramp located off of Route 839. It is open from about mid-April to mid-October, but it is only suitable for safe launching from mid-May to mid-October.

The Sportsman's Area has a 16-foot wide concrete boat ramp and an 18 car and trailer parking lot. This area is also accessible for good shore fishing spots and canoe launching. The Sportsman's Area is closed from mid-December to mid-March.



Armstrong County leases 28 acres from the Corps to operate the Milton Loop Campground. Fifty-two sites suitable for all types of camping units are available. The campground has modern restrooms with showers and a sanitary disposal station. Some of the campground is available for seasonal camping.

The Pennsylvania Game Commission additionally leases 1280 acres of project lands in Indiana County for wildlife management and public hunting. Hunting and trapping are permitted in all areas of the project except developed recreation areas and posted areas. All federal, state and local laws concerning these activities apply. A variety of game is found in abundance in and around the project including white-tailed deer, black bear, small game species and upland game birds. The use of all-terrain vehicles is strictly prohibited.

Rangers conduct group tours of Mahoning Dam that include learning its purpose and functions and overlooking the rushing discharge of the outflow from atop the dam. To arrange a tour contact the Park Office.



**Mahoning Creek Lake**, authorized by the Flood Control Acts of 1936 and 1938, is one of 16 flood control projects in the Pittsburgh District. An important link in a system of flood control projects, Mahoning provides flood protection for the lower Allegheny River Valley and the upper Ohio River. Since its completion in 1941, Mahoning has prevented flood damages of nearly \$667 million. When compared to these savings the estimated construction cost of \$6 million appears small.

Mahoning also stores water and releases it downstream during dry periods to improve water quality and quantity for domestic and industrial use, navigation, recreation, esthetics and aquatic life.

## Lake and Dam Statistics

**Location:** On Mahoning Creek in Armstrong County, Pa., 21.6 miles upstream from the junctions of the creek and the Allegheny River. The project is located in Armstrong, Indiana and Jefferson Counties, Pa.

Project area, acres	2,967
Drainage area above dam, square miles	340
Construction cost	\$6,000,000

### Dam

Type of structure:	concrete gravity with a gate controlled center spillway
Height above streambed, feet	162
Length, feet	926
Width at base, feet	154
Volume of concrete, cubic yards	342,210
Outlet Works:	3-5'8" x 10' gate-controlled sluices, 1-24" ball valve conduit, 1-36" ring jet valve

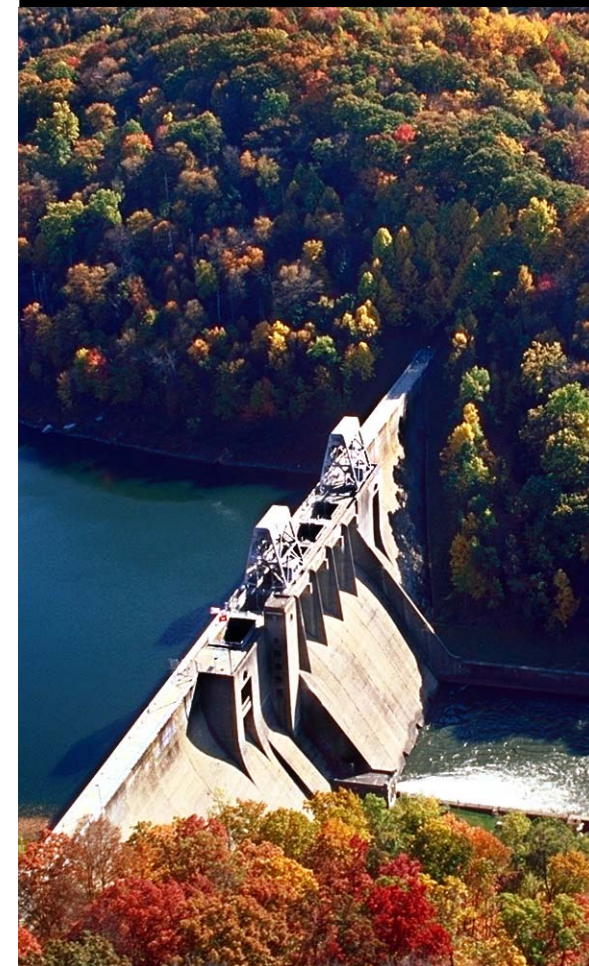
### Lake

Length at normal pool, miles	5
Area, acres:	
Maximum (reservoir full)	2,370
Normal (summer pool)	280
Elevation, feet above sea level:	
Maximum (reservoir full)	1,162
Normal (summer pool)	1,098
Winter pool	1,077
Streambed at dam	1,008



US Army Corps of Engineers  
Pittsburgh District

# Mahoning Creek Lake



Mahoning Creek Lake  
145 Dam Site Road  
New Bethlehem, PA 16242-9603  
(814) 257-8811

Daily Lake Information: (814) 257-8017

[www.lrp.usace.army.mil/rec/lakes/mahoning.htm](http://www.lrp.usace.army.mil/rec/lakes/mahoning.htm)

# MAHONING CREEK LAKE

	Accessible Restroom	Boat Launch Ramp	Campground	Camper Dumping Station	Drinking Water	Electric Hookups	Picnic Area	Picnic Shelter	Restroom Facilities
Dam Site Picnic Area	X	-	-	-	X	-	X	-	X
Milton Loop Campground <sup>1</sup>	X	X	X	X	X	X	X	X	X
Outflow Area	X	-	-	-	X	-	X	X	X
Sportsman's Area <sup>2</sup>	-	X	-	-	-	-	-	-	-

<sup>1</sup> Operated by Armstrong County    <sup>2</sup> Operated by Pennsylvania Fish and Boat Commission

## TO ENJOY A SAFE OUTING OBSERVE THESE SAFETY TIPS!

### Water Hazards

Boat with caution! Be especially aware of the existence of underwater obstructions. In addition, floating debris may be at or near the lake surface as a result of fluctuating pool levels. Boaters and skiers should be watchful for these hazards. Because of these floating and underwater hazards, diving is discouraged.

### Personal Floatation Device (PFD)

All boaters are reminded that U.S. Coast Guard approved PFDs are required for each person on board and that the best protection against drowning is to wear your PFD. At Mahoning Lake you must wear a PFD if you are less than 13 years of age, a non-swimmer, are on a boat less than 16-feet in length or are in a canoe. Know the rules before you go out on the water.

### Fire Protection

The fire potential is generally high during the recreation season. Help prevent forest fires by obeying the no open fire regulation in effect.

### Boaters

Remember, motors are limited to 10 horsepower. While trolling or cruising, be considerate of those in canoes or fishing at anchor.

### Alcohol and Boating Don't Mix

Please don't drink while operating a boat. Alcohol is involved in at least 50 percent of all drownings and is major cause of death in recreational boating accidents.

**Alcoholic beverages are prohibited on all Mahoning Creek Lake lands and waters!**

### Be Alert to Changing Weather and Lake Conditions

Storms can come on very quickly. If lightning is spotted, make for shore immediately and seek out a safe location. If you observe the lake level rising rapidly, immediately return to your launch. It may be necessary to close the ramps because of flooding.

### Anglers

Exercise caution when wading in muddy or fast moving water. Use a wading stick to check for sudden drop offs in the water and for extra balance.

Federal rules and regulations concerning the use of Mahoning Creek Lake are set forth in Title 36, Chapter III of the Code of Federal Regulations and are on display in the areas of this project most frequently used by the public.

