

Hurricane Danny

July 1997

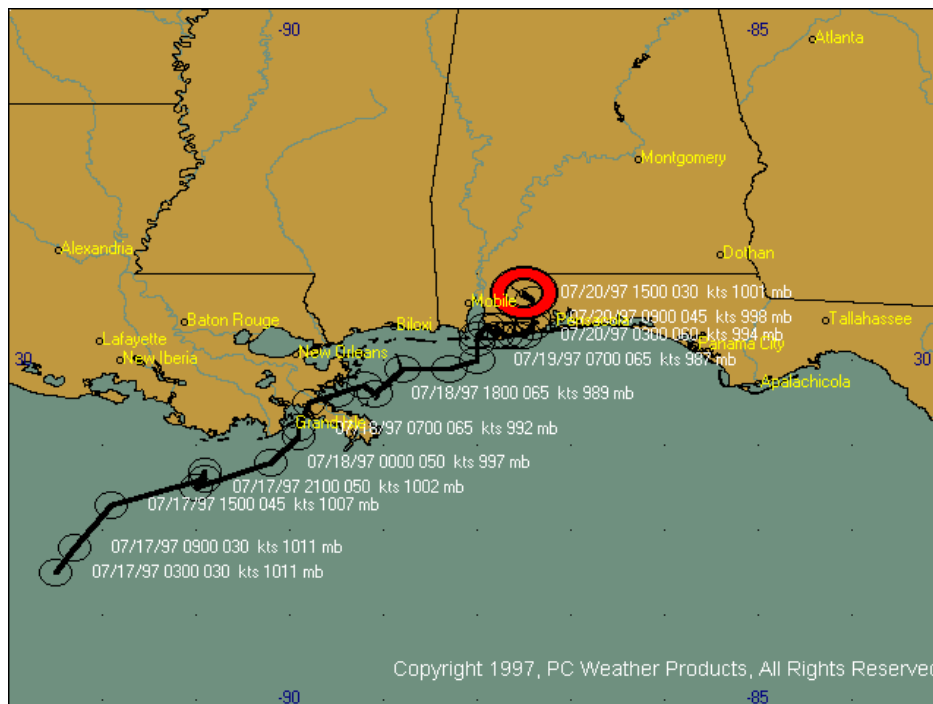
1. A Tropical Depression developed from a weak area of low pressure over the northwestern Gulf of Mexico late on Wednesday, July 16th. By the morning of Thursday



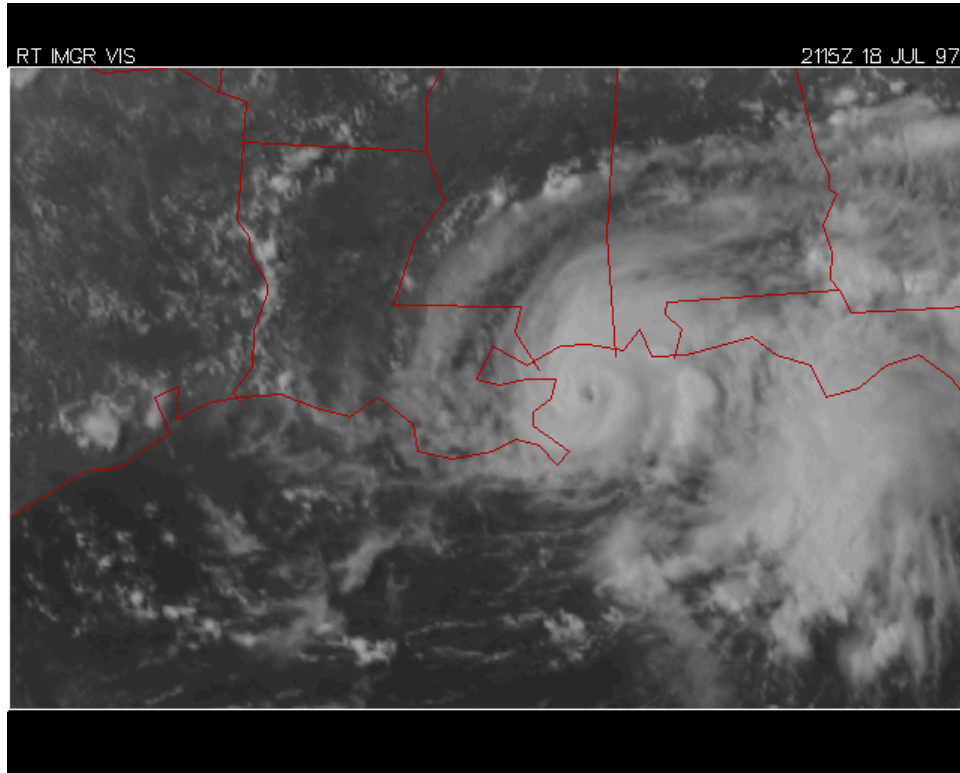
Jim Larkin looks toward the ocean as he stands on the deck of his condo Saturday. Below him is a four-story condo that collapsed that had been under construction (AP Photo/July 21, 1997)

July 17th, the system was upgraded to Tropical Storm Danny. Reports from oil rigs off the Louisiana coast and reconnaissance aircraft suggested sustained winds had reached 50 mph. Danny tracked slowly northeastward throughout the day, and by early Thursday evening was located just Southwest of Grand Isle, Louisiana. During the early morning hours of Friday, July 18, Danny drifted across Barataria Bay, Louisiana and strengthened rapidly. The storm acquired minimal hurricane status with 75 mph sustained winds at 2 a.m. on the 18th. Nearby, Grand Isle reported winds gusting to 90 mph. Danny drifted slowly eastward across the delta country of Plaquemines Parish during the morning of the 18th, and emerged into Breton Sound. Throughout the afternoon and evening of

Friday, July 18th, hurricane Danny drifted very slowly eastward into the open waters of the Gulf, about 40 miles south of the Mississippi and Alabama Coasts. Danny was a small



storm, with hurricane force winds extending only 25 miles from the center. However, land-based radar and reconnaissance both showed an increasingly well organized structure to the system. The absence of significant steering currents aloft in the atmosphere caused Danny to stall just south of Mobile Bay during the early hours of Saturday, July 19th.



2. Just before sunrise on the 19th, Hurricane Danny drifted across the Fort Morgan peninsula into the lower reaches of Mobile Bay, where the storm again stalled. It was at this time that the storm acquired its peak intensity, with reconnaissance aircraft reporting a minimum central pressure of 984 mb or 29.05 inches of mercury. On the 10 a.m. CDT advisory from the Tropical Prediction Center, Danny's sustained winds were increased to 80 mph. At the east end of Dauphin Island, an automated weather station measured a peak wind gust of 101 mph.



3. Hurricane Danny slowly drifted ashore in southern Baldwin County, Alabama late in the afternoon of the 19th, and then meandered slowly northward near the

Mitchell Moore and his wife use a canoe to float through flood waters at the Fish River near Marlow, Ala, to check their cousin's flooded home (AP Photo/July 20, 1997)

Alabama/Florida state line during the next 24 hours while weakening. The very slow movement of the storm, coupled with the fact that a persistent spiral bank remained along the storm's western flank across Mobile and Baldwin counties produced extraordinary rainfall total of 20 to 25 inches in portions of the Mobile Bay area. Heaviest rainfall was concentrated across southeastern Mobile and extreme western Baldwin counties. Doppler weather radar estimates indicated that at least 30 inches of rain affected the Dauphin Island area. Serious flooding problems developed along both shoreline areas of Mobile Bay including the Fowl River and Weeks Bay area.

Preliminary Rainfall Hurricane Danny

<i>Location</i>	<i>Rainfall (inches)</i>
<i>Theodore (5 mi south, nr. Alabama Port)</i>	<i>27.00</i>
<i>Mouth Fowl River</i>	<i>24.50</i>
<i>Fairhope</i>	<i>24.00</i>
<i>Baldwin County (I-10 & Hwy 98)</i>	<i>23.56</i>
<i>Daphne</i>	<i>23.54</i>
<i>Spanish Fort</i>	<i>21.58</i>
<i>Tillman's Corner</i>	<i>19.62</i>
<i>Chickasaw</i>	<i>19.10</i>
<i>Gulf Shores</i>	<i>18.00</i>
<i>Mobile County (Spring Hill nr. I-65)</i>	<i>16.04</i>
<i>Mobile County (6 mi. southeast of Airport)</i>	<i>14.21</i>

Source: National Weather Service Mobile

4. Danny was downgraded to a tropical depression at 10 a. m. on the 20th. The remnants of Danny drifted slowly northward into west/central Alabama on the 21st.

**Preliminary Storm Surge Elevations
Hurricane Danny**

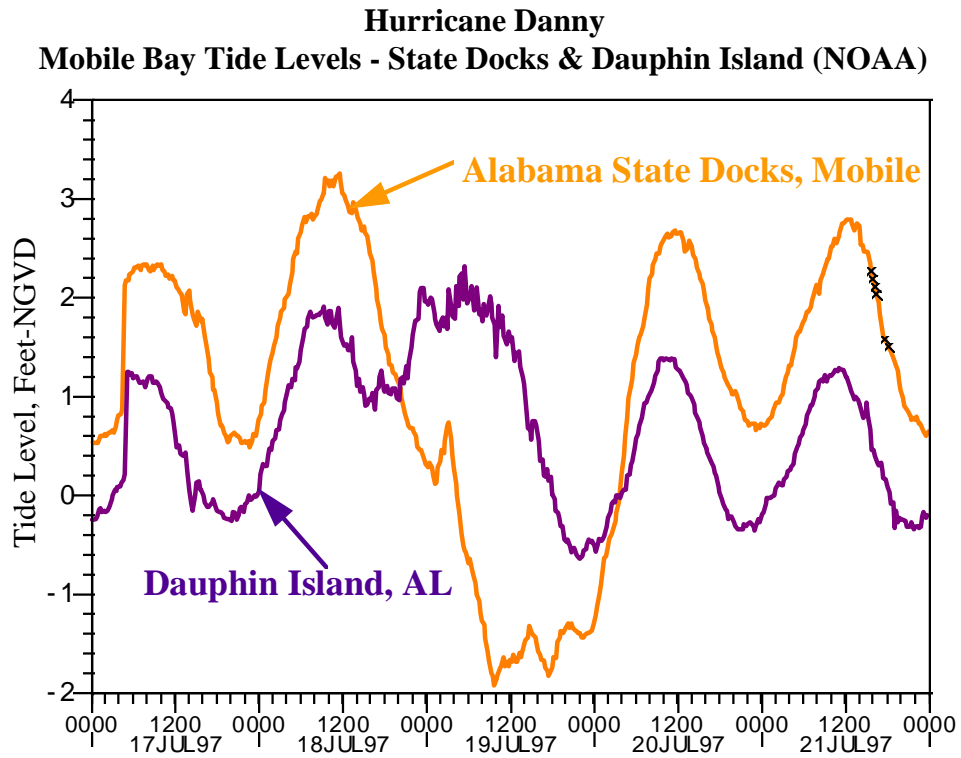
<i>Location</i>	<i>High Water Elevation, (Ft-NGVD)</i>
<i>Dauphin Island, West</i>	<i>5.07</i>
<i>Dauphin Island, East, Gage</i>	<i>4.95</i>
<i>Dauphin Island, East, Lab</i>	<i>2.40</i>
<i>Gulf Shores, Hwy 182 West</i>	<i>6.54</i>
<i>Gulf Shores, Hwy 182, Lagoon</i>	<i>4.79</i>
<i>Bon Secour</i>	<i>3.47</i>
<i>Pensacola Gulf Beach</i>	<i>2.59</i>

Source: U. S. Army Corps of Engineers, Mobile District

Hurricane Danny
16 - 20 July 1997

ADV	LAT	LON	TIME	WIND	PR	STAT
1	27.50	92.50	07/16/21Z	30	1012	TROPICAL DEPRESSION
2	27.50	92.50	07/17/03Z	30	1011	TROPICAL DEPRESSION
3	27.80	92.30	07/17/09Z	30	1011	TROPICAL DEPRESSION
4	28.30	91.90	07/17/15Z	45	1007	TROPICAL STORM
5	28.60	90.90	07/17/16Z	50	1001	TROPICAL STORM
5A	28.70	90.90	07/17/18Z	50	1002	TROPICAL STORM
6	28.50	91.00	07/17/21Z	50	1002	TROPICAL STORM
6A	28.80	90.20	07/18/00Z	50	997	TROPICAL STORM
7	29.10	89.90	07/18/03Z	50	996	TROPICAL STORM
7A	29.10	89.90	07/18/06Z	55	994	TROPICAL STORM
8	29.20	89.90	07/18/07Z	65	992	HURRICANE-1
9	29.50	89.80	07/18/09Z	65	989	HURRICANE-1
9A	29.60	89.50	07/18/12Z	65	989	HURRICANE-1
10	29.70	89.20	07/18/15Z	65	990	HURRICANE-1
10A	29.60	89.10	07/18/18Z	65	989	HURRICANE-1
11	30.00	88.50	07/18/21Z	65	-	HURRICANE-1
11A	29.90	88.30	07/19/00Z	65	984	HURRICANE-1
12	30.00	88.00	07/19/03Z	65	984	HURRICANE-1
12A	30.00	88.00	07/19/05Z	65	984	HURRICANE-1
12B	30.00	88.00	07/19/07Z	65	987	HURRICANE-1
13	30.20	88.00	07/19/09Z	65	986	HURRICANE-1
13A	30.30	88.00	07/19/11Z	65	985	HURRICANE-1
13B	30.40	87.90	07/19/13Z	65	984	HURRICANE-1
14	30.40	87.90	07/19/15Z	70	984	HURRICANE-1
14A	30.40	87.90	07/19/17Z	70	986	HURRICANE-1
14B	30.30	87.80	07/19/19Z	70	986	HURRICANE-1
15	30.40	87.80	07/19/21Z	65	987	HURRICANE-1
15A	30.30	87.70	07/19/23Z	65	989	HURRICANE-1
15B	30.30	87.60	07/20/01Z	65	993	HURRICANE-1
16	30.30	87.50	07/20/03Z	60	994	TROPICAL STORM
16A	30.40	87.40	07/20/06Z	50	998	TROPICAL STORM
17	30.50	87.40	07/20/09Z	45	998	TROPICAL STORM
17A	30.70	87.40	07/20/12Z	40	999	TROPICAL STORM
18	30.80	87.50	07/20/15Z	30	1001	TROPICAL DEPRESSION

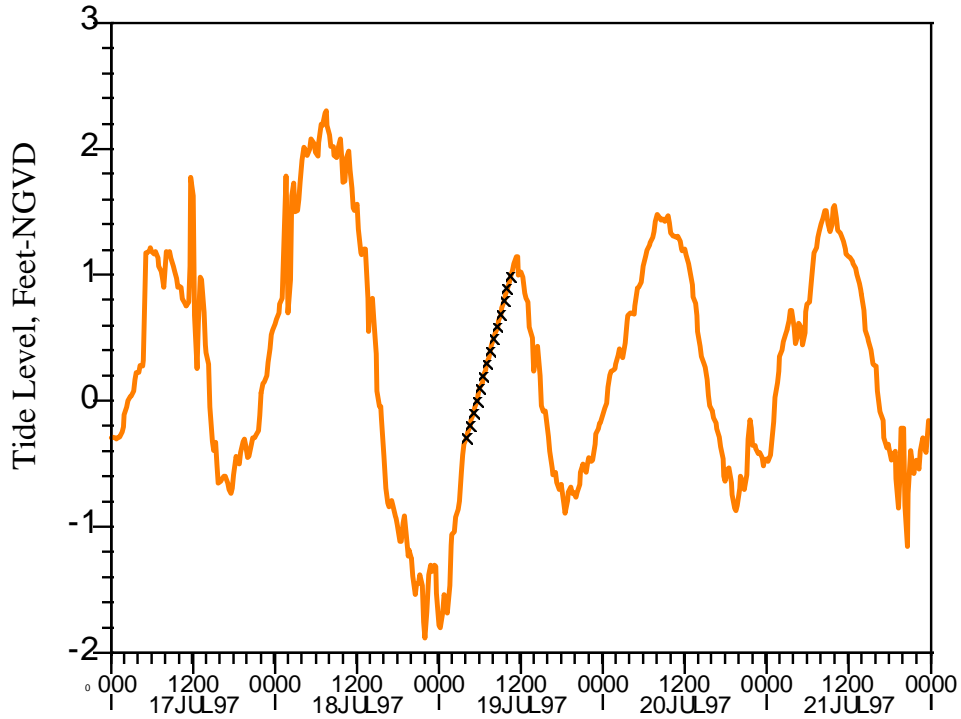
Note: The following real-time data have undergone gross error checking only. Please use with discretion.



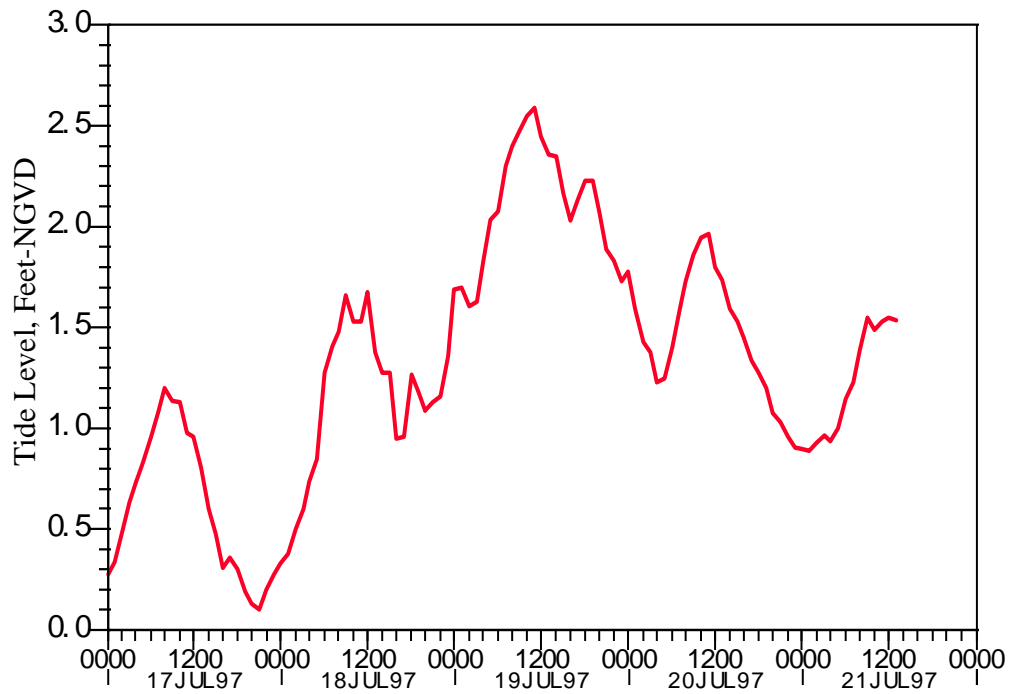
NOAA Gage - Dauphin Island (DPIA1)
Hurricane Danny



Bayou LaBatre Tide Levels

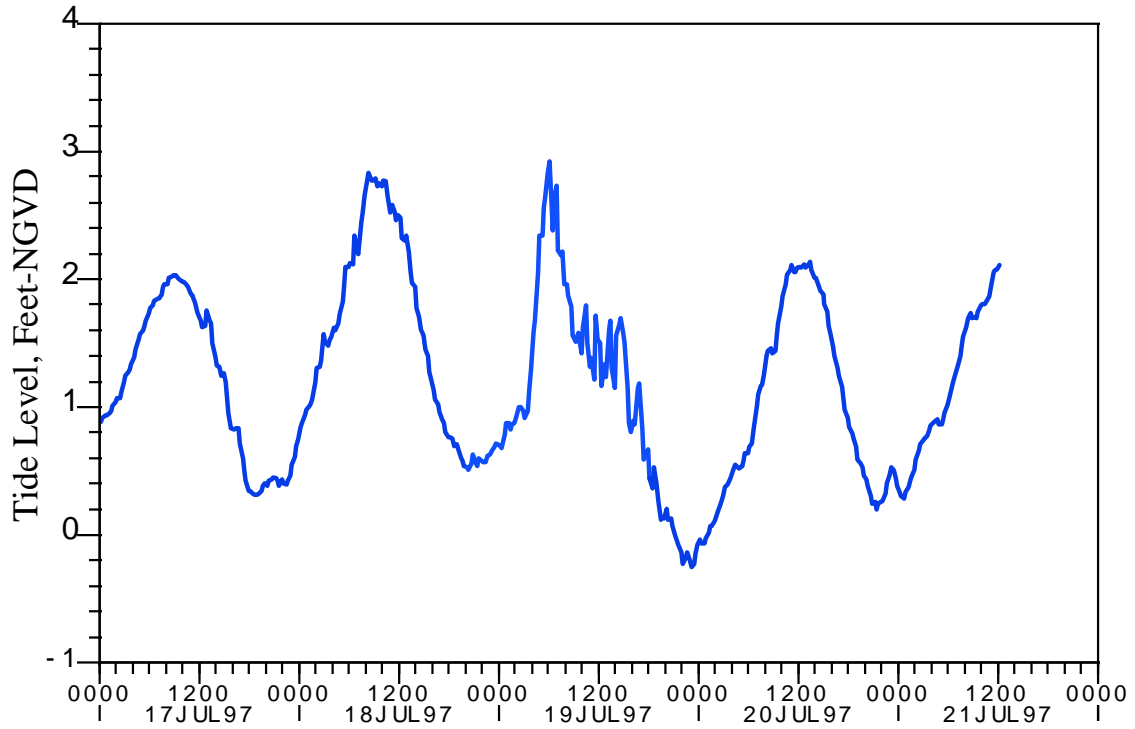


**Hurricane Danny
Pensacola - Gulf Beach Tide Levels**



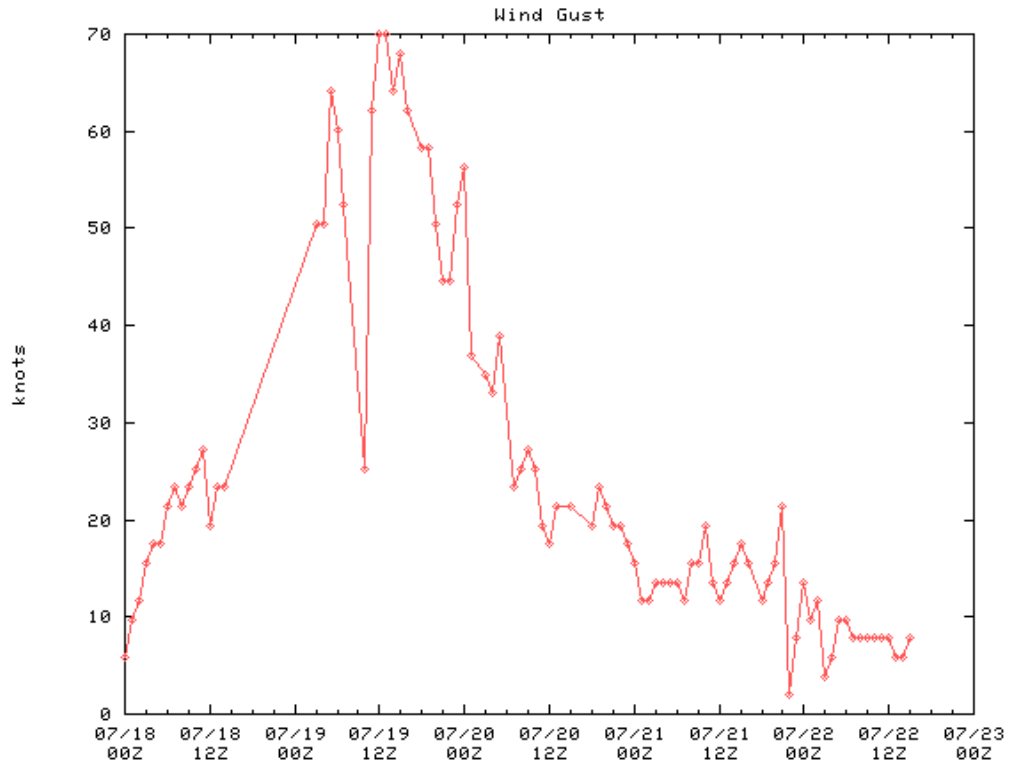
Hurricane Danny

Cedar Point, Alabama Tide Levels



Dauphin Island, Alabama

Wind Gusts



Dauphin Island, Alabama Sustained Winds - Wind Direction

