

Chapter PM

LAND USE AND OWNERSHIP,
POWDER RIVER BASIN

By T.T. Taber and S.A. Kinney

In U.S. Geological Survey Professional Paper 1625-A.

Contents

Explanation of Cultural Information.....	PM-1
Map Information for the Powder River Basin Land Use and Land Cover map.....	PM-2
Map Information for the Powder River Basin Subsurface Ownership map.....	PM-3
Map Information for the Powder River Basin Surface Ownership map.....	PM-4

Figures

- PM-1.** Land Use and Land Cover; Powder River Basin
- PM-2.** Subsurface Ownership; Powder River Basin
- PM-3.** Surface Ownership; Powder River Basin

EXPLANATION OF CULTURAL INFORMATION

Roads—These are selected roads from USGS 1:2,000,000-scale digital line graphs (DLG). These contain two types of roads.

Interstate—Major roads that are part of the national interstate system.

Highway—State and other highways.

Railroads—Railroads from USGS 1:2,000,000-scale digital line graphs (DLG)

City/Towns—General locations of cities and towns in the basin.

Latitude/Longitude Tic Marks—These tics show locations of key parallels and meridians that pass through the basin.

MAP INFORMATION FOR THE POWDER RIVER BASIN LAND USE AND LAND COVER MAP

Sources—Biewick, Laura R.H., Urbanowski, Shayne R., Cain, Sheila, and Neasloney, Larry, 1998, Land Status and Federal Mineral Ownership in the Powder River Basin, Wyoming and Montana: a digital data set for geographic information systems: U.S. Geological Survey Open-File Report 98-108, coverage scale 1:100,000.

See figure **PM-1**.

Description—The land use and land cover maps were simplified from their original format for increased readability. The narrowly defined categories were grouped into the following categories:

Agriculture—Cropland, pastures, hay fields, and other agriculture.

Barren Land—Sandy areas, bare rock, and/or bare ground.

Forest—Deciduous and/or evergreen forest land.

Rangeland—Shrub, brush, and/or herbaceous rangeland.

Urban/Industrial—Residential, commercial, and/or industrial land uses.

MAP INFORMATION FOR THE POWDER RIVER BASIN SUBSURFACE OWNERSHIP MAP

Sources—Biewick, Laura R.H., Urbanowski, Shayne R., Cain, Sheila, and Neasloney, Larry, 1998, Land Status and Federal Mineral Ownership in the Powder River Basin, Wyoming and Montana: a digital data set for geographic information systems: U.S. Geological Survey Open-File Report 98-108, coverage scale 1:100,000.
See figure [PM-2](#).

Description—This map gives an overview of subsurface areas managed by Federal agencies within the Powder River Basin.

Federal all minerals—The Federal government owns the rights to all minerals. This includes coal, oil, gas, and other mineral rights.

Federal coal—The Federal government owns the rights to coal minerals only.

Federal oil and gas—The Federal government owns the rights to oil and gas minerals. This classification may include other mineral rights also.

Federal oil, gas, and coal—The Federal government owns the rights to oil, gas, and coal resources.

Federal other minerals—The Federal government owns mineral rights not listed. These mineral rights may include oil and gas rights.

No Federal minerals—The Federal government did not own subsurface mineral rights at the time the data were compiled.

MAP INFORMATION FOR THE POWDER RIVER BASIN SURFACE OWNERSHIP MAP

Sources—Biewick, Laura R.H., Urbanowski, Shayne R., Cain, Sheila, and Neasloney, Larry, 1998, Land Status and Federal Mineral Ownership in the Powder River Basin, Wyoming and Montana: a digital data set for geographic information systems: U.S. Geological Survey Open-File Report 98-108, coverage scale 1:100,000.
See figure [PM-3](#).

Description—This map gives an overview of surface areas managed by Federal agencies within the Powder River Basin. The following surface ownership groups are identified.

Bankhead-Jones Lands—Special Use lands administered by the U.S. Forest Service (USFS) and the U.S. Bureau of Land Management (BLM).

U.S. Bureau of Land Management—Lands administered by the BLM.

U.S. Forest Service—Lands administered by the USFS.

National Grasslands—Grasslands administered by the USFS.

Other Federal Lands—May include lands administered by the U.S. Department of Defense or the U.S. Fish and Wildlife Service.

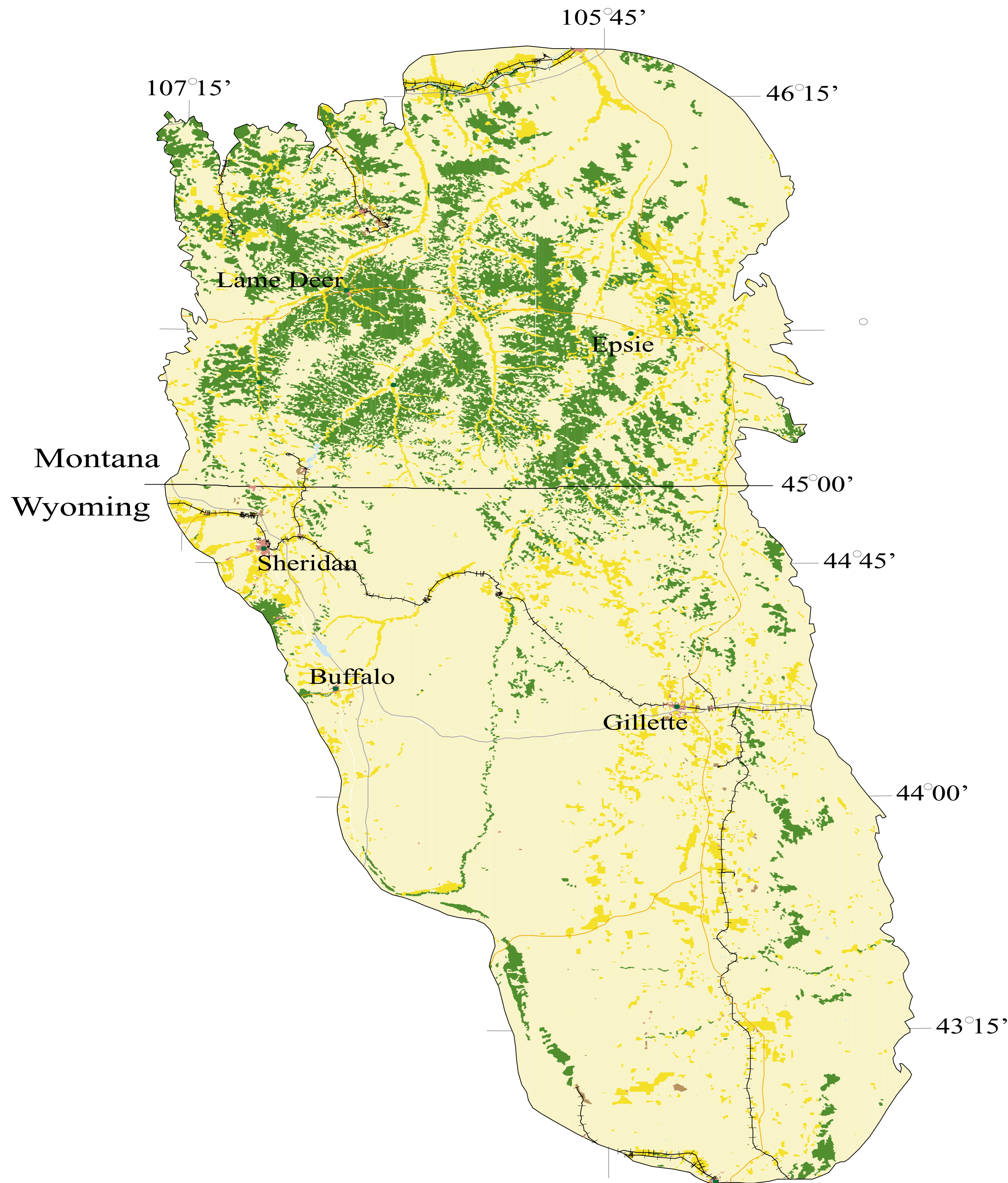
Reservations—Indian reservation lands.

State Lands—Lands administered by the state in which they reside.

Private—All other ownership types.

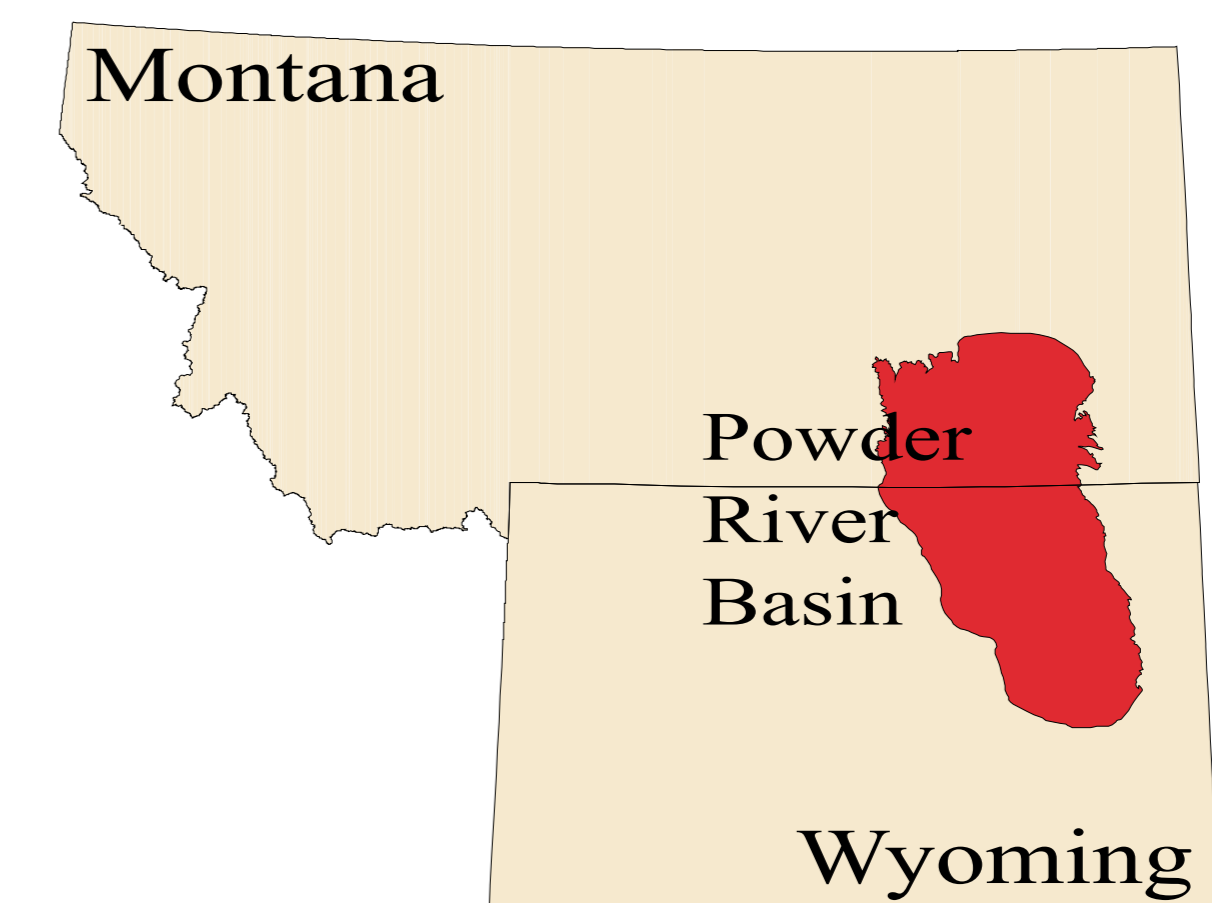
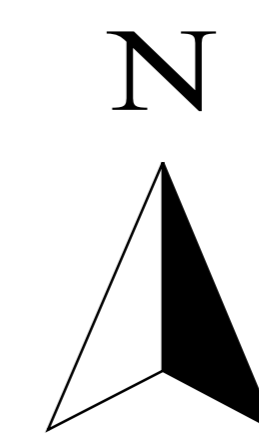
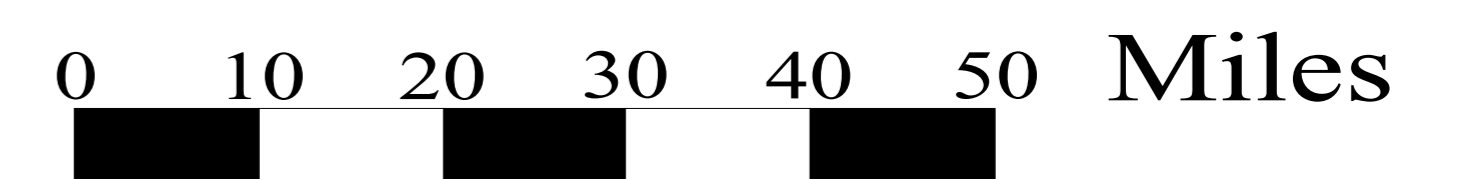
Water—Water bodies are identified, but ownership is not designated.

Figure PM-1. Land Use/Land Cover Powder River Basin

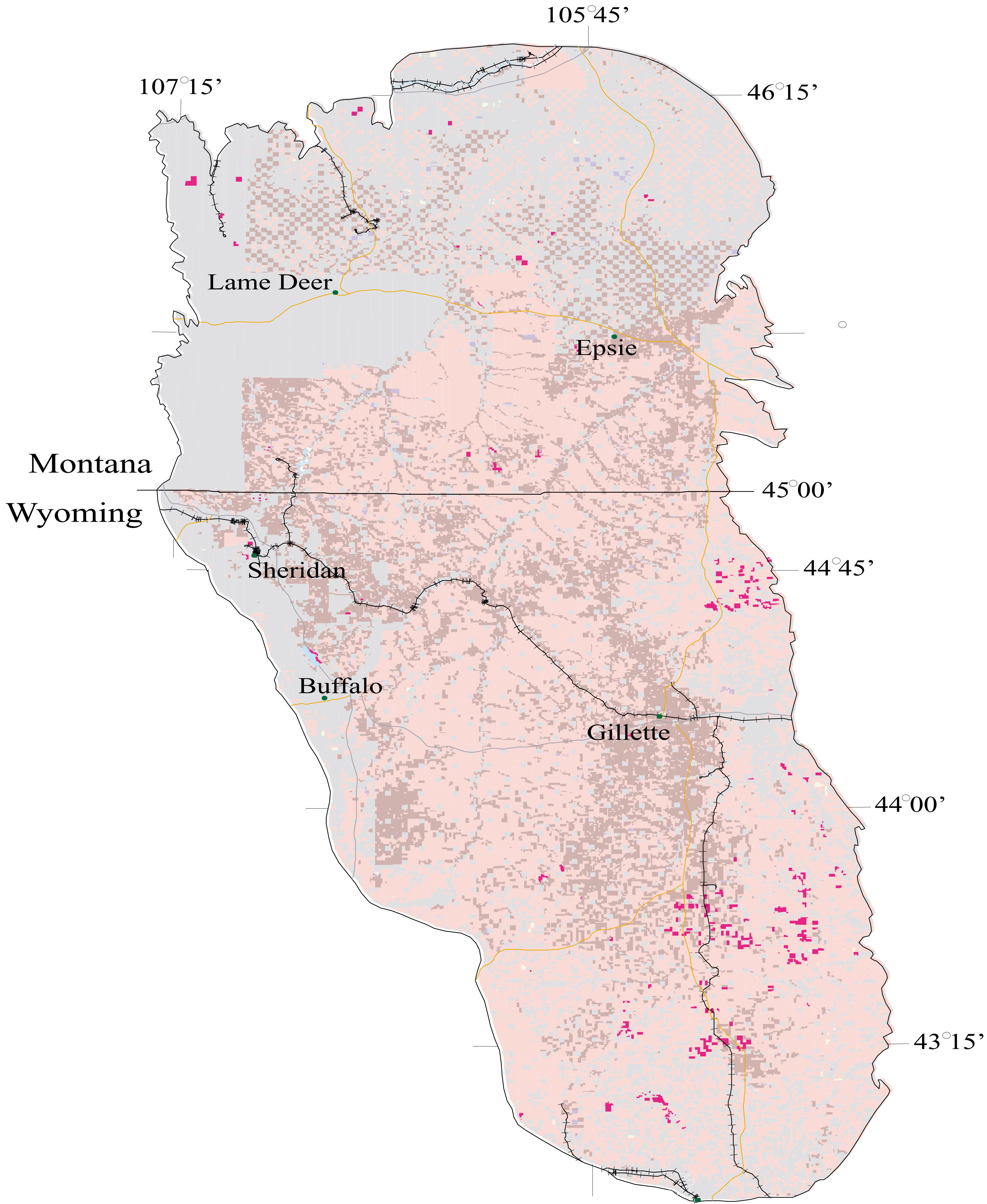


Legend

- Agricultural
- Barren Land
- Forest
- Rangeland
- Urban/Industrial
- Water
- Cities/Towns
- Interstates
- Highways
- Railroads



**Figure PM-2. Subsurface
Ownership Powder River Basin**



Legend

- Federal All Minerals
- Federal Coal
- Federal Oil, Gas & Coal
- Federal Oil & Gas
- Federal Other Minerals
- No Federal Minerals
- Cities/Towns
- Interstates
- Highways
- Railroads

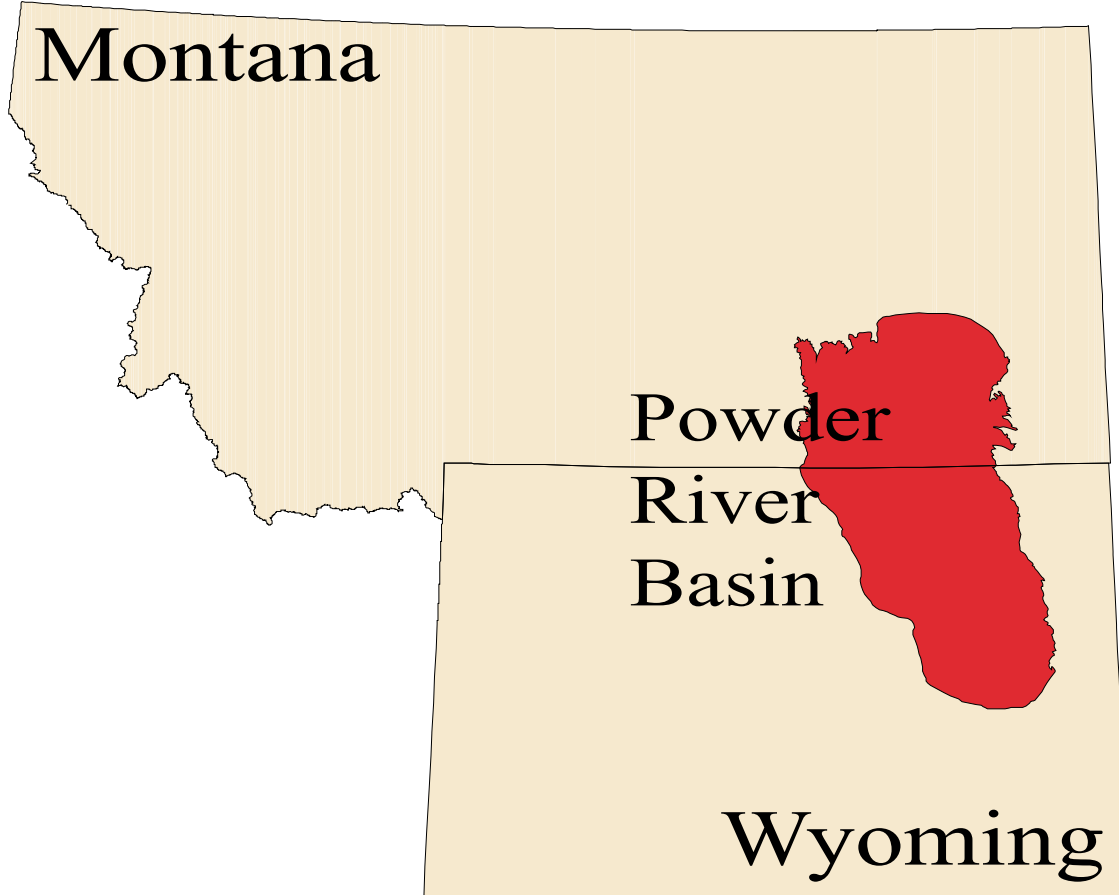
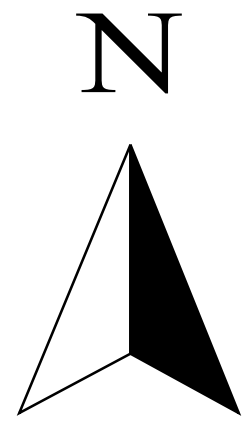
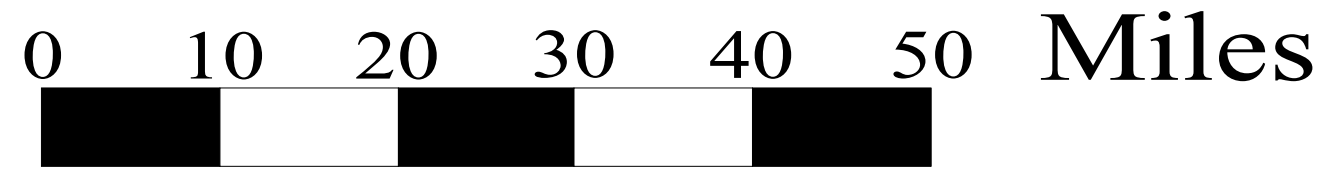
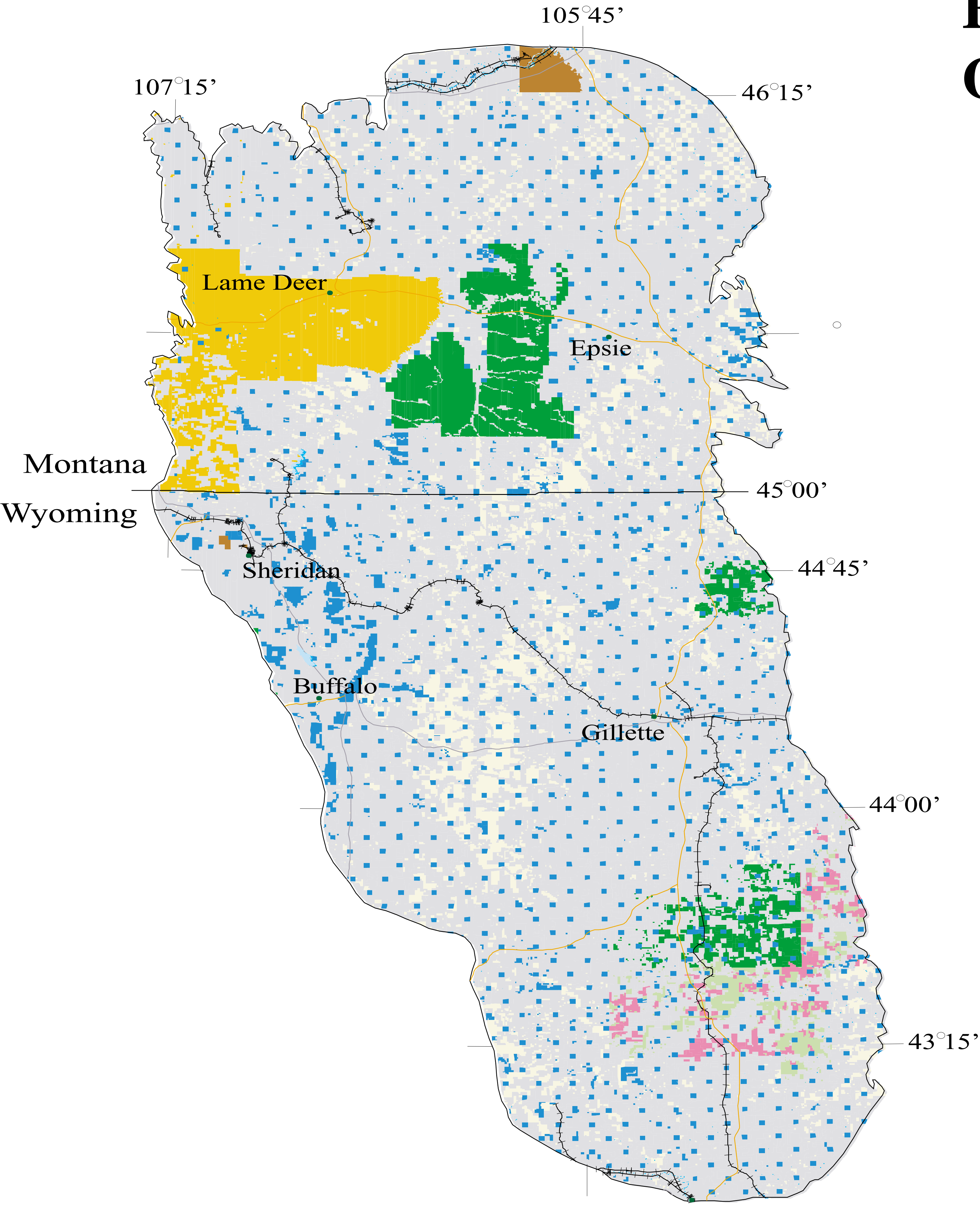


Figure PM-3. Surface Ownership Powder River Basin



Legend

- Bankhead-Jones Lands
- U.S. Bureau of Land Management
- U.S. Forest Service
- National Grasslands
- Other Federal Lands
- Indian Reservations
- State Lands
- Private
- Water
- Cities/Towns
- Interstates
- Highways
- Railroads

