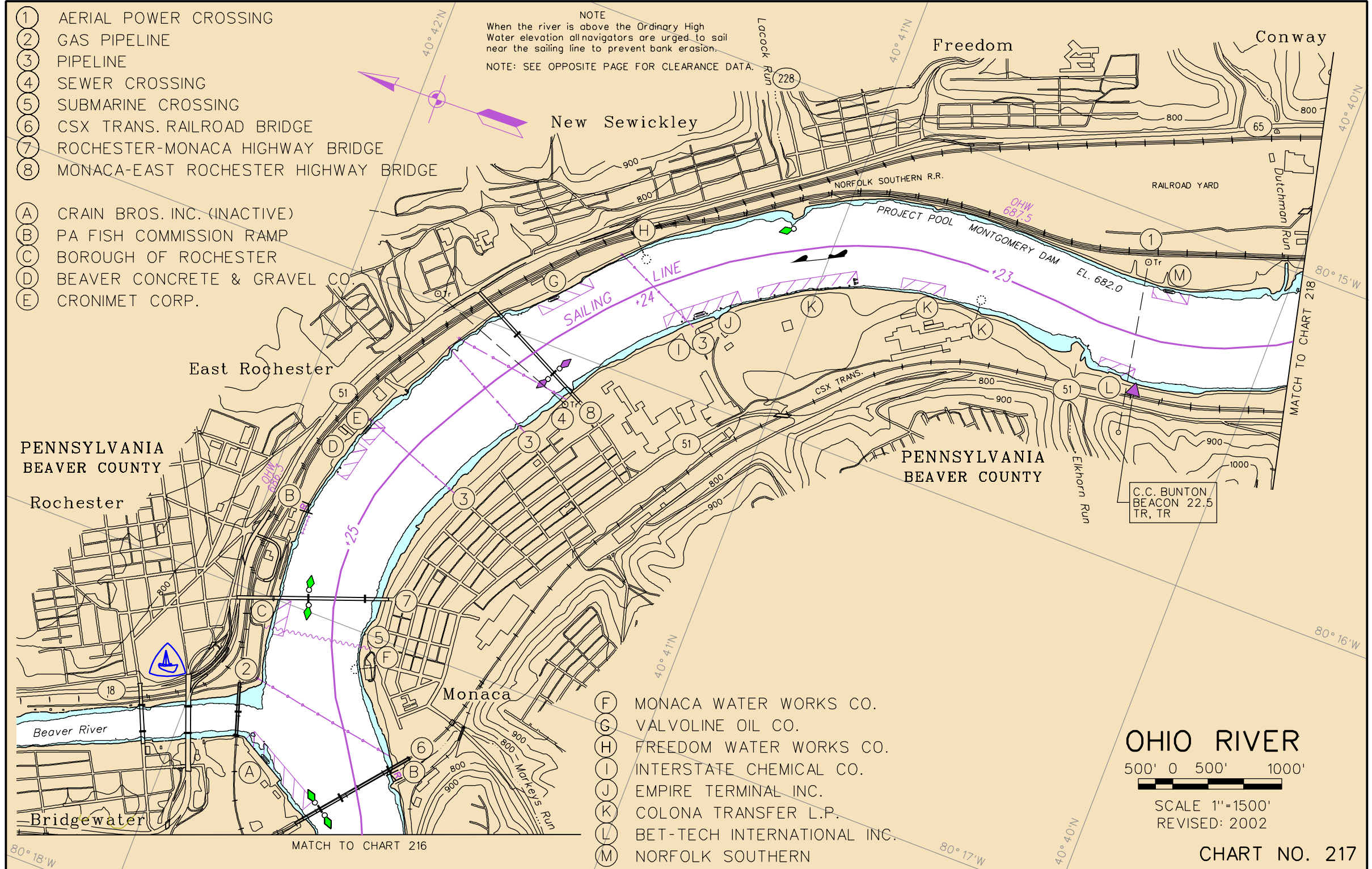


- ① AERIAL POWER CROSSING
- ② GAS PIPELINE
- ③ PIPELINE
- ④ SEWER CROSSING
- ⑤ SUBMARINE CROSSING
- ⑥ CSX TRANS. RAILROAD BRIDGE
- ⑦ ROCHESTER-MONACA HIGHWAY BRIDGE
- ⑧ MONACA-EAST ROCHESTER HIGHWAY BRIDGE

- (A) CRAIN BROS. INC. (INACTIVE)
- (B) PA FISH COMMISSION RAMP
- (C) BOROUGH OF ROCHESTER
- (D) BEAVER CONCRETE & GRAVEL CO.
- (E) CRONIMET CORP.

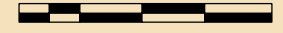
- (F) MONACA WATER WORKS CO.
- (G) VALVOLINE OIL CO.
- (H) FREEDOM WATER WORKS CO.
- (I) INTERSTATE CHEMICAL CO.
- (J) EMPIRE TERMINAL INC.
- (K) COLONA TRANSFER L.P.
- (L) BET-TECH INTERNATIONAL INC.
- (M) NORFOLK SOUTHERN

NOTE  
 When the river is above the Ordinary High Water elevation all navigators are urged to sail near the sailing line to prevent bank erosion.  
 NOTE: SEE OPPOSITE PAGE FOR CLEARANCE DATA.



**OHIO RIVER**

500' 0 500' 1000'



SCALE 1"=1500'  
 REVISED: 2002

CHART NO. 217

MATCH TO CHART 216

MATCH TO CHART 218

C.C. BUNTON  
 BEACON 22.5  
 TR, TR