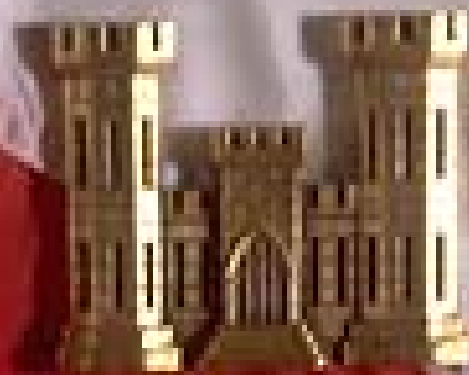


Fort Belvoir – EPG Overview



US Army Corps
of Engineers

5 Dec 2006

The Installation Today

Five Places ... One Post

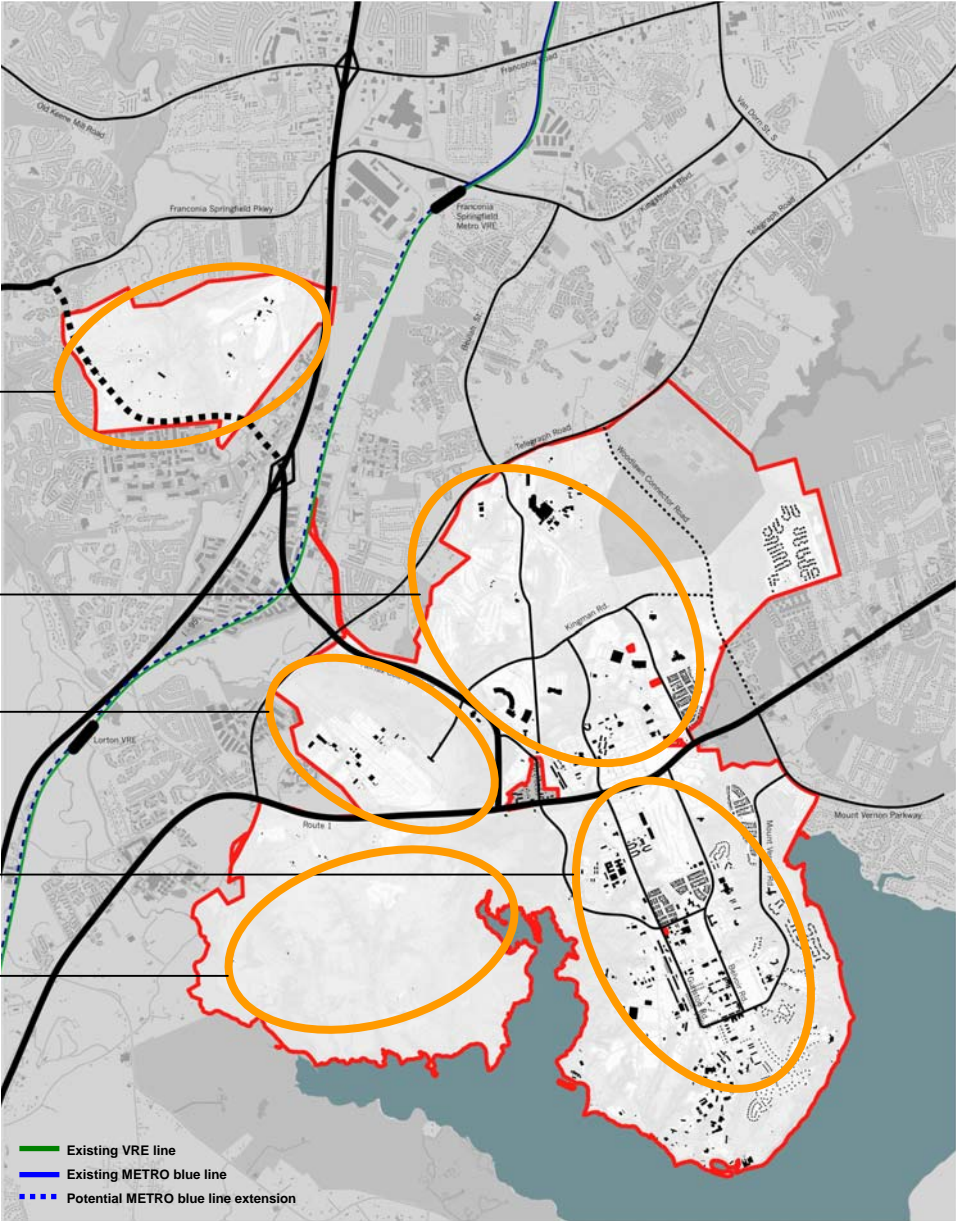
ENGINEER PROVING GROUNDS

NORTH POST

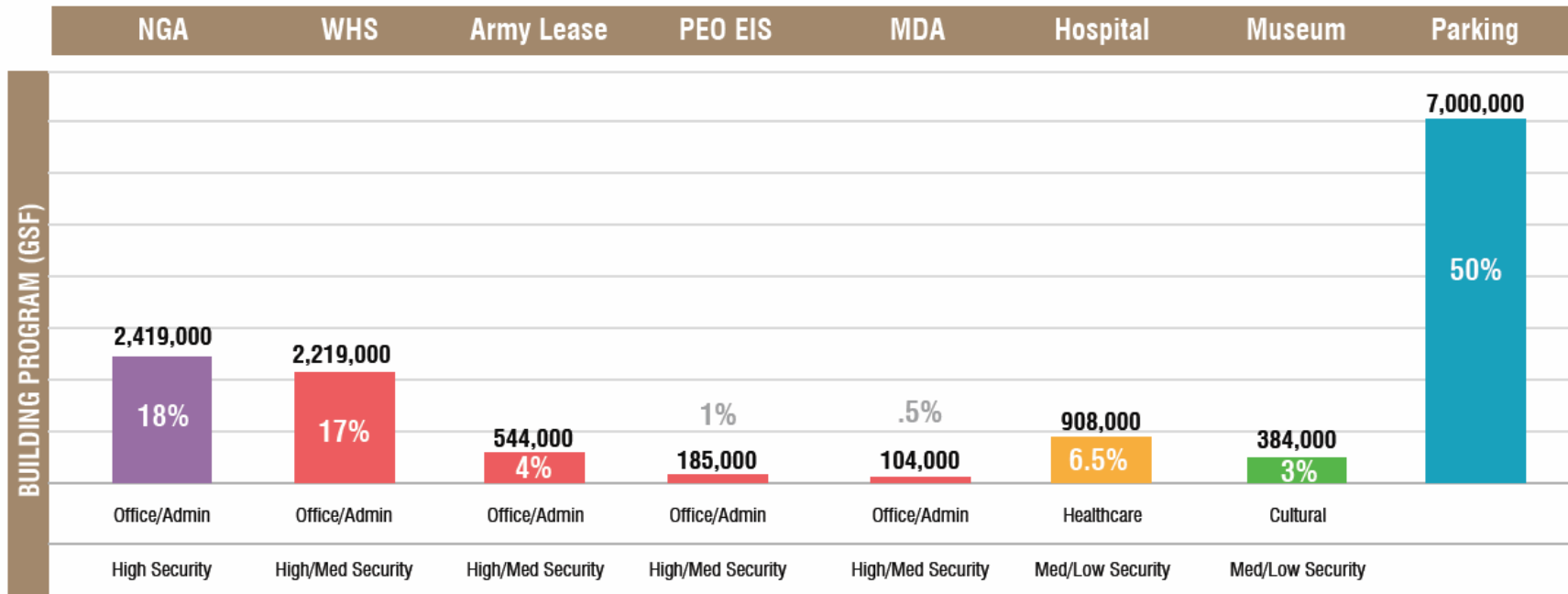
DAVISON AIRFIELD

SOUTH POST

SOUTHWEST AREA



Current Requirements

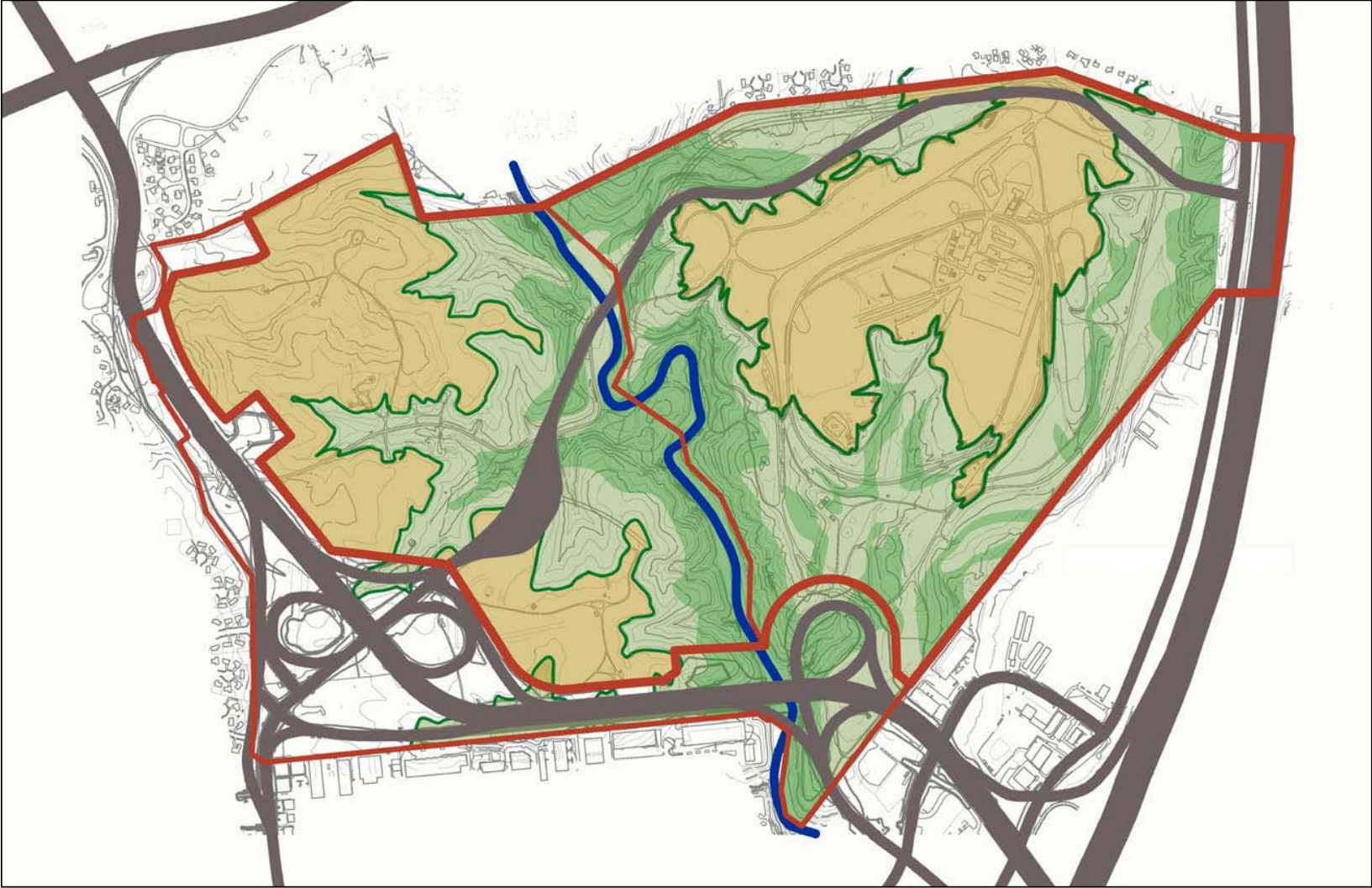




Existing Conditions

Site Analysis

Topography



- PROPERTY LINE
- ACCOTINK CREEK
- 20% GRADIENT
- 10% GRADIENT
- PLATEAU

**Historical Records Review
Fort Belvoir, VA**



**MALCOLM
PIRNIE**

**Map 4-1
EPG Range Areas**

Legend

Installation Boundary

CTT Range Inventor

EPG Area

EPG Areas

EPG East

EPG Park

EPG ROW

EPG Ranges

SWMU



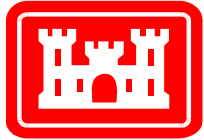
Data Source: Fort Belvoir, VA
Color Infrared DOQ

Coordinate System: UTM Zone 18N
Datum: NAD 1983
Units: Meters

Contract: DACA31-00-D-0043
Edition: Final Historical Records Review
Date: March 2006



Land Use ... Creating Distinct Campuses



National Geospatial Intelligence Agency (NGA) New Campus East (NCE)

- **Scope:**

- 2.4 million gross square feet to accommodate relocation and consolidation of the National Geospatial Intelligence Agency, includes:
 - 2 million gsf office and support spaces
 - 50,000 gsf central utility plant
 - 180,000 gsf data center with standalone central utility plant
 - 10 MW power generation facility
 - 10,000 gsf remote inspection facility
 - 6,000 space structured parking

- **Status:**

- Design contract awarded Mar 2006
- Currently in schematic design phase
- Construction Acquisition strategy is Integrated Design-Bid-Build (IDBB)
 - Construction contractor on board during the detailed design phase
- Construction will be executed in a fast-track mode
- Currently anticipate RFP for IDBB in Mar 2007

- **Milestones:**

- Aug 07 – Start construction (sitework)
- Mar 09 – Data Center operational
- Apr 11 – Construction Complete