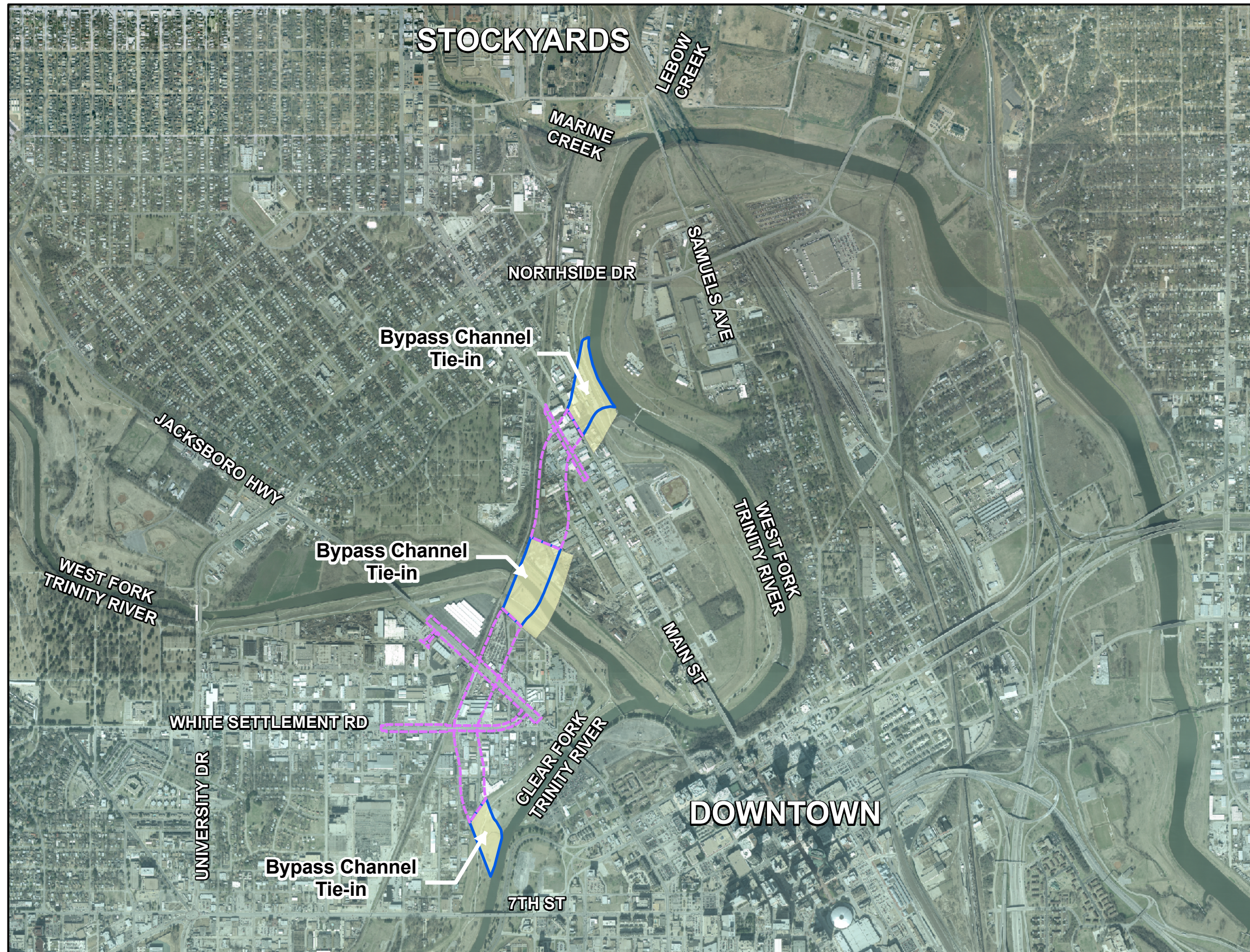





**Central City**  
**Figure 5-4.**  
**Recommended Plan**  
**Implementation**  
**Segment 4 - Bypass Channel**  
**Tie-ins**



**Legend**

-  Approximate Construction Area
-  Bypass Channel Tie-ins
-  Previously Constructed



0 0.15 0.3 0.6 Miles

Aerial Photography Date: January 2003



**ATTENTION**

This product is reproduced from geospatial information prepared by the U.S. Army Corps of Engineers. GIS data and product accuracy may vary. They may be: developed from sources of differing accuracy, accurate only at certain scales, based on modeling or interpretation, incomplete while being created or revised, etc... Using GIS products for purposes other than those for which they were created may yield inaccurate or misleading results. The Corps of Engineers reserves the right to correct, update, modify, or replace GIS products without notification. For more information contact the Fort Worth District Planning office.

2006 2007 2008 2009 2010 2011 2012 2013 2014 2015