

Central City

Figure 3 - 9. Flood Damage Reduction, Ecosystem Improvement, and Recreation Components of the P & G Based Alternative

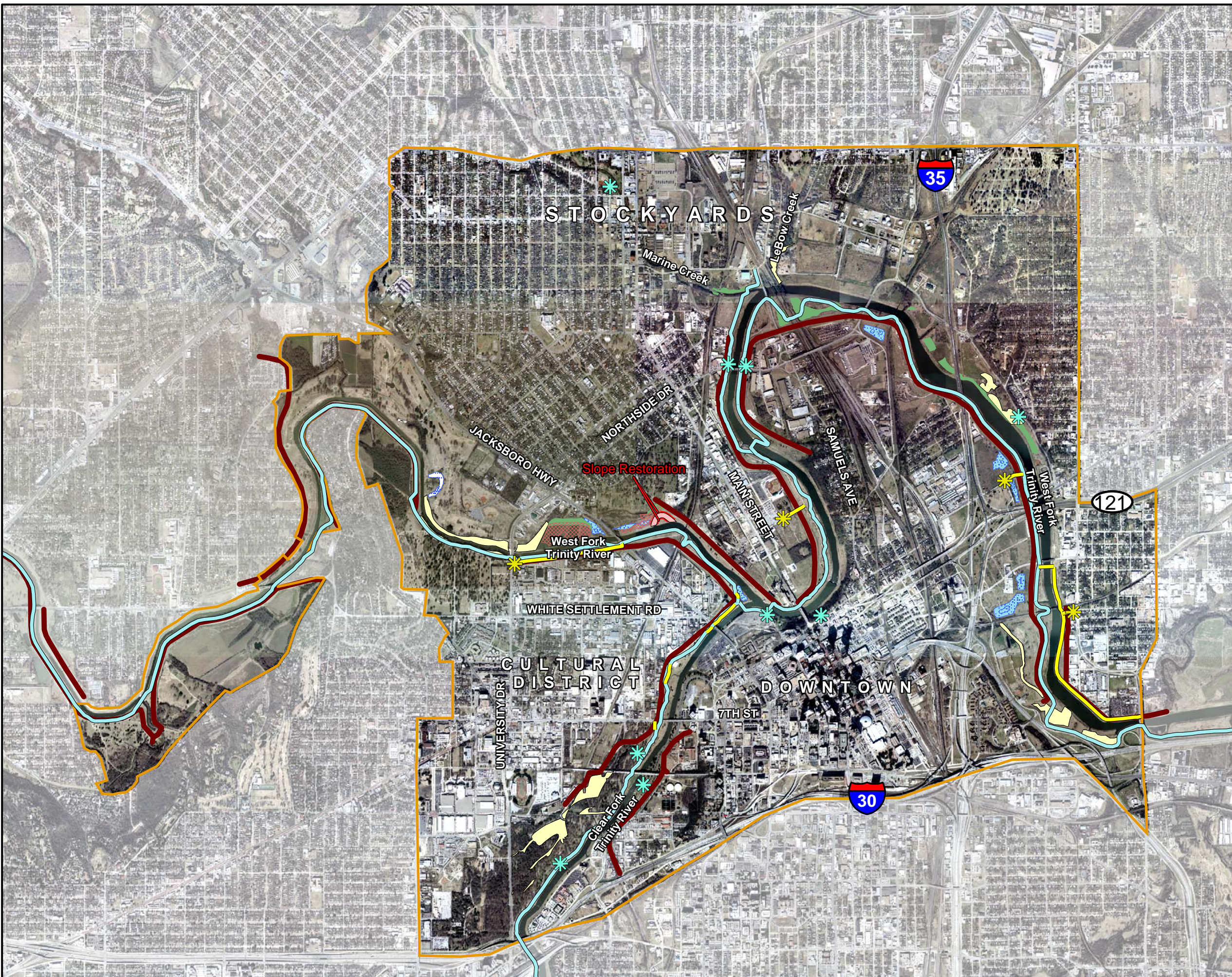
Legend

Proposed Action

- Channel Realignment
- Riparian Corridor Improvement
- Riparian Woodland Development
- Slope Restoration
- Wetlands Development
- Wetlands Improvement
- Mitigation Area
- Existing Trinity Trail
- New Trails
- New Trail Heads
- Existing Trail Head
- Existing Levees
- Study Area

0 0.25 0.5 1 Miles

Aerial Photography Date: January 2003



ATTENTION

This product is reproduced from geospatial information prepared by the U.S. Army Corps of Engineers. GIS data and product accuracy may vary. They may be: developed from sources of differing accuracy, accurate only at certain scales, based on modeling or interpretation, incomplete while being created or revised, etc... Using GIS products for purposes other than those for which they were created may yield inaccurate or misleading results. The Corps of Engineers reserves the right to correct, update, modify, or replace GIS products without notification. For more information contact the Fort Worth District Planning office. 5/2/2005 at 4:27:00 PM